



TRILOBITE TESTING, INC.

DRILL STEM TEST REPORT

Red Oak Energy INC
 7701 E Kellogg Dr STE 710
 Wlchia KS 67207
 ATTN: Sean Deenihan

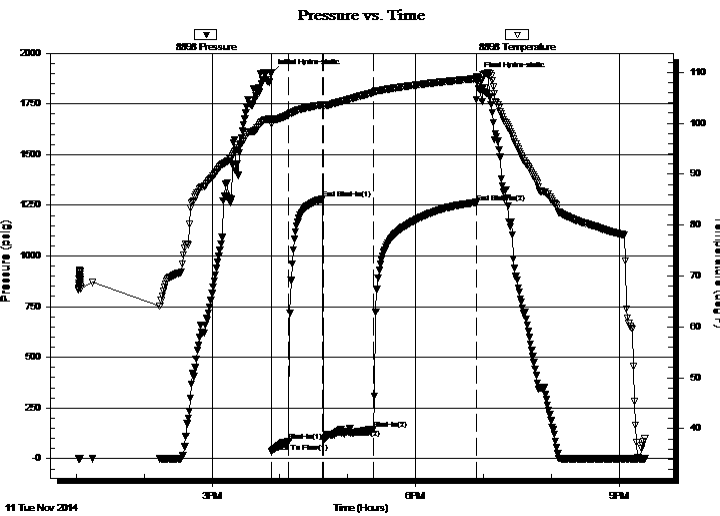
9-7-24 Graham Co.
Brown #9-1
 Job Ticket: 60687 **DST#: 1**
 Test Start: 2014.11.11 @ 13:01:45

GENERAL INFORMATION:

Formation: **LKC F**
 Deviated: No Whipstock: ft (KB)
 Time Tool Opened: 15:52:35
 Time Test Ended: 21:23:05
 Interval: **3830.00 ft (KB) To 3888.00 ft (KB) (TVD)**
 Total Depth: 3888.00 ft (KB) (TVD)
 Hole Diameter: 7.88 inches Hole Condition: Good
 Test Type: Conventional Bottom Hole (Initial)
 Tester: Tate Lang
 Unit No: 77
 Reference Elevations: 2523.00 ft (KB)
 2518.00 ft (CF)
 KB to GR/CF: 5.00 ft

Serial #: 8898 Outside
 Press @ Run Depth: 146.55 psig @ 3832.00 ft (KB) Capacity: 8000.00 psig
 Start Date: 2014.11.11 End Date: 2014.11.11 Last Calib.: 2014.11.11
 Start Time: 13:01:46 End Time: 21:23:05 Time On Btm: 2014.11.11 @ 15:52:25
 Time Off Btm: 2014.11.11 @ 18:54:15

TEST COMMENT: 15-Fair blow built to 6 in
 30-Dead no blow back
 45-Strong blow built to 11 in
 90-Dead no blow back



PRESSURE SUMMARY

Time (Min.)	Pressure (psig)	Temp (deg F)	Annotation
0	1898.47	100.93	Initial Hydro-static
1	34.05	99.85	Open To Flow (1)
16	84.91	101.69	Shut-In(1)
46	1281.35	103.64	End Shut-In(1)
46	99.60	103.42	Open To Flow (2)
91	146.55	106.07	Shut-In(2)
182	1264.04	108.76	End Shut-In(2)
182	1882.88	108.91	Final Hydro-static

Recovery

Length (ft)	Description	Volume (bbl)
120.00	MCW 20%M 80%W	0.59
62.00	WCM 25%W 75%M	0.87
75.00	V/SOCWM 3%O 22%W 75%M	1.05
5.00	100%O	0.07

Gas Rates

Choke (inches)	Pressure (psig)	Gas Rate (Mcf/d)



TRILOBITE TESTING, INC.

DRILL STEM TEST REPORT

Red Oak Energy INC

9-7-24 Graham Co.

7701 E Kellogg Dr STE 710
Wichita KS 67207

Brown #9-1

Job Ticket: 60687

DST#: 1

ATTN: Sean Deenihan

Test Start: 2014.11.11 @ 13:01:45

GENERAL INFORMATION:

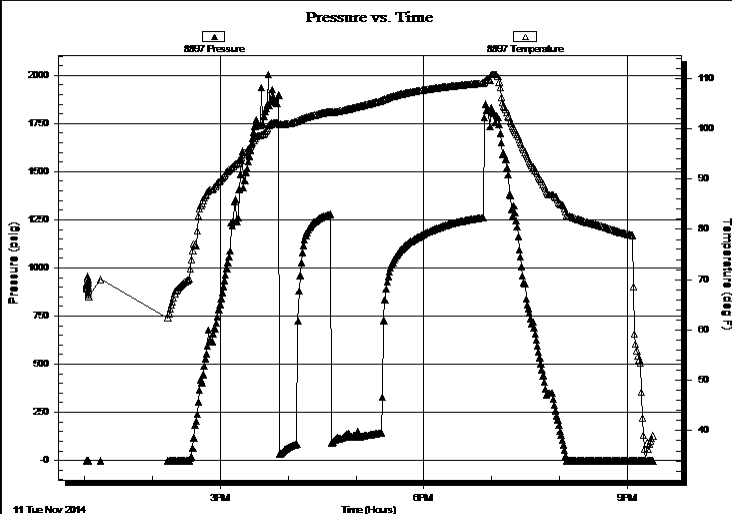
Formation: **LKC F**
 Deviated: No Whipstock: ft (KB)
 Test Type: Conventional Bottom Hole (Initial)
 Time Tool Opened: 15:52:35
 Tester: Tate Lang
 Time Test Ended: 21:23:05
 Unit No: 77
Interval: 3830.00 ft (KB) To 3888.00 ft (KB) (TVD)
 Reference Elevations: 2523.00 ft (KB)
 Total Depth: 3888.00 ft (KB) (TVD)
 2518.00 ft (CF)
 Hole Diameter: 7.88 inches
 Hole Condition: Good
 KB to GR/CF: 5.00 ft

Serial #: 8897

Inside

Press @ Run Depth: psig @ 3832.00 ft (KB) Capacity: 8000.00 psig
 Start Date: 2014.11.11 End Date: 2014.11.11 Last Calib.: 2014.11.11
 Start Time: 13:01:31 End Time: 21:22:50 Time On Btm:
 Time Off Btm:

TEST COMMENT: 15-Fair blow built to 6 in
 30-Dead no blow back
 45-Strong blow built to 11 in
 90-Dead no blow back



PRESSURE SUMMARY

Time (Min.)	Pressure (psig)	Temp (deg F)	Annotation

Recovery

Length (ft)	Description	Volume (bbl)
120.00	MCW 20%M 80%W	0.59
62.00	WCM 25%W 75%M	0.87
75.00	VSOCWM 3%O 22%W 75%M	1.05
5.00	100%O	0.07

Gas Rates

	Choke (inches)	Pressure (psig)	Gas Rate (Mcf/d)



**TRILOBITE
TESTING, INC.**

DRILL STEM TEST REPORT

FLUID SUMMARY

Red Oak Energy INC

9-7-24 Graham Co.

7701 E Kellogg Dr STE 710
Wichita KS 67207

Brown #9-1

Job Ticket: 60687

DST#: 1

ATTN: Sean Deenihan

Test Start: 2014.11.11 @ 13:01:45

Mud and Cushion Information

Mud Type: Gel Chem

Cushion Type:

Oil API:

deg API

Mud Weight: 9.00 lb/gal

Cushion Length:

ft

Water Salinity:

64000 ppm

Viscosity: 51.00 sec/qt

Cushion Volume:

bbbl

Water Loss: 6.00 in³

Gas Cushion Type:

Resistivity: ohm.m

Gas Cushion Pressure:

psig

Salinity: 1400.00 ppm

Filter Cake: 1.00 inches

Recovery Information

Recovery Table

Length ft	Description	Volume bbbl
120.00	MCW 20%M 80%W	0.590
62.00	WCM 25%W 75%M	0.870
75.00	VSOCWM 3%O 22%W 75%M	1.052
5.00	100%O	0.070

Total Length: 262.00 ft Total Volume: 2.582 bbl

Num Fluid Samples: 0

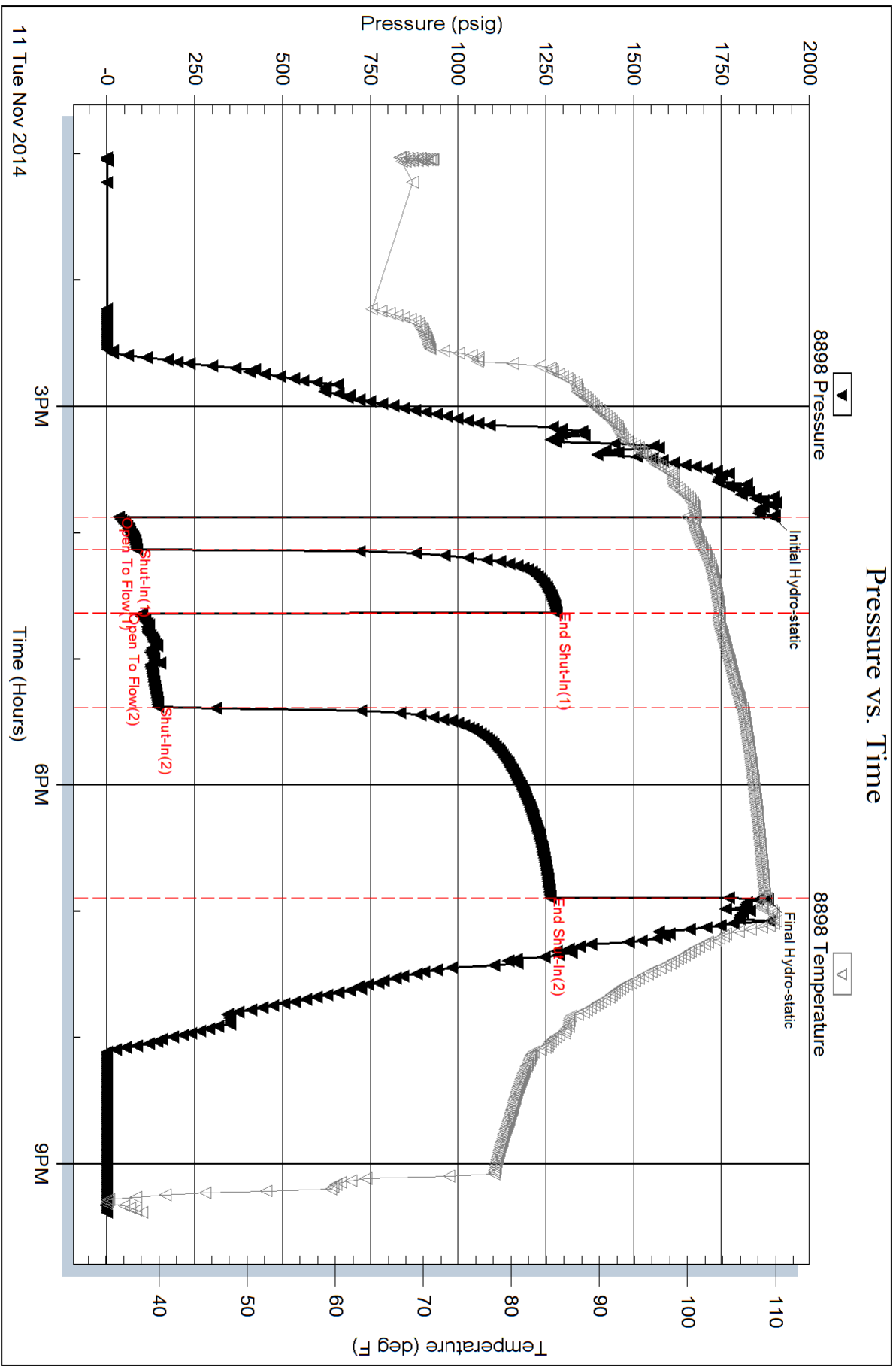
Num Gas Bombs: 0

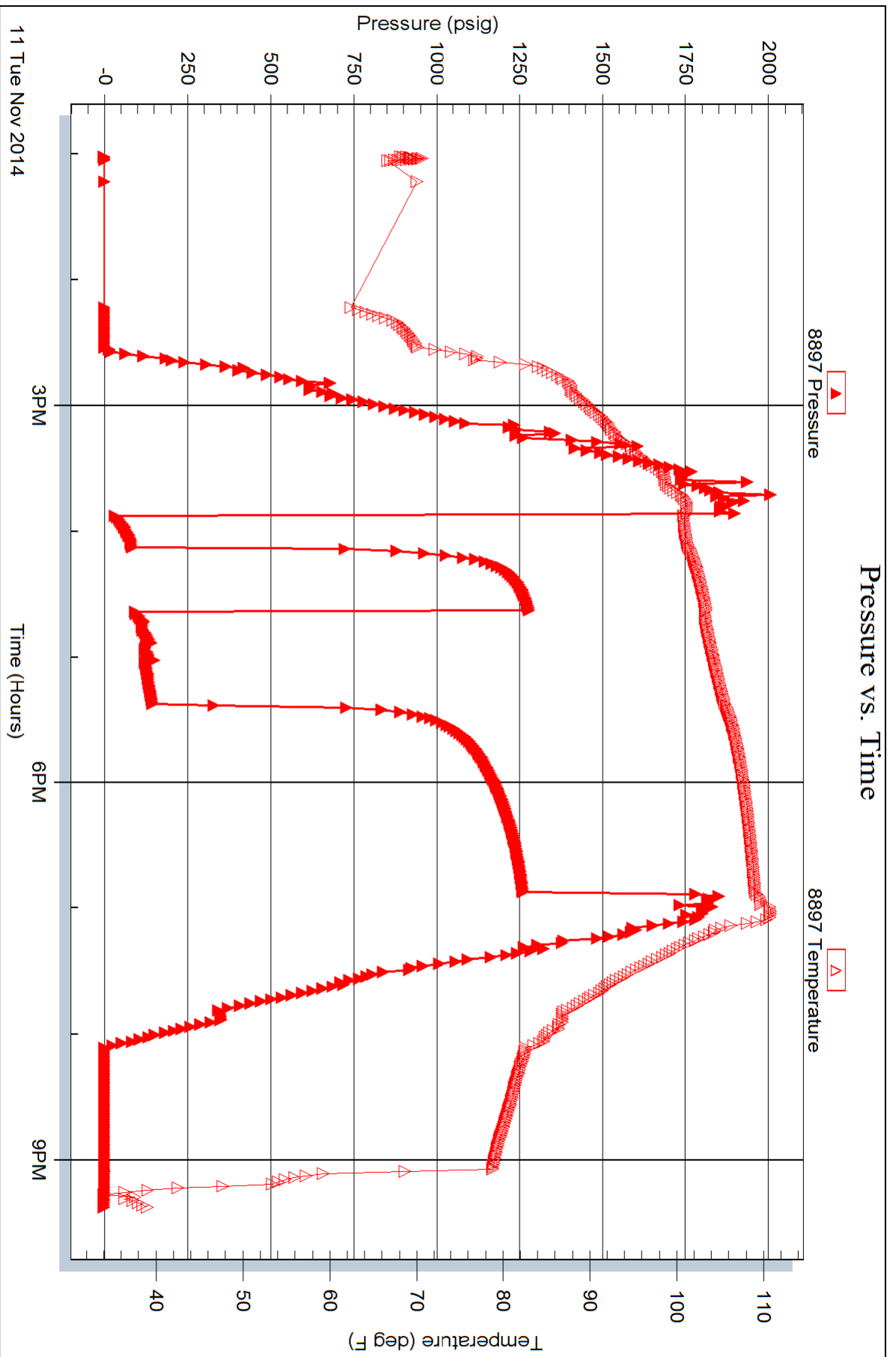
Serial #:

Laboratory Name:

Laboratory Location:

Recovery Comments: .484 @ 15 F = 64000







TRILOBITE TESTING, INC.

DRILL STEM TEST REPORT

Red Oak Energy INC
 7701 E Kellogg Dr STE 710
 Wlchia KS 67207
 ATTN: Sean Deenihan

9-7-24 Graham Co.
Brown #9-1
 Job Ticket: 60688 **DST#: 2**
 Test Start: 2014.11.12 @ 09:27:14

GENERAL INFORMATION:

Formation: **LKC J**
 Deviated: No Whipstock: ft (KB)
 Time Tool Opened: 12:07:34
 Time Test Ended: 18:11:33
 Interval: **3950.00 ft (KB) To 3974.00 ft (KB) (TVD)**
 Total Depth: 3974.00 ft (KB) (TVD)
 Hole Diameter: 7.88 inches Hole Condition: Good
 Test Type: Conventional Bottom Hole (Reset)
 Tester: Tate Lang
 Unit No: 77
 Reference Elevations: 2523.00 ft (KB)
 2518.00 ft (CF)
 KB to GR/CF: 5.00 ft

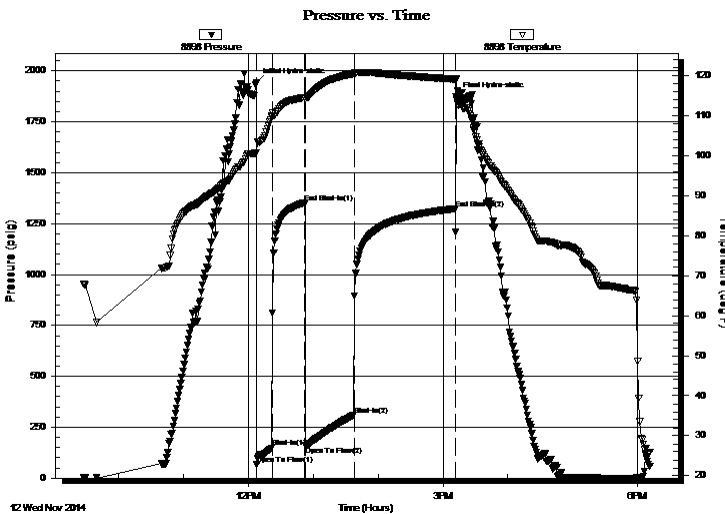
Serial #: 8898

Outside

Press @ Run Depth: 309.81 psig @ 3951.00 ft (KB) Capacity: 8000.00 psig
 Start Date: 2014.11.12 End Date: 2014.11.12 Last Calib.: 2014.11.12
 Start Time: 09:27:15 End Time: 18:11:33 Time On Btm: 2014.11.12 @ 12:07:14
 Time Off Btm: 2014.11.12 @ 15:11:53

TEST COMMENT: 15-B.O.B. in 4 mins
 30-Fair surface blow back built to 4 in
 45-B.O.B. in 5 mins
 90-Fair surface blow back built to 6 in

PRESSURE SUMMARY



Time (Min.)	Pressure (psig)	Temp (deg F)	Annotation
0	1939.62	100.57	Initial Hydro-static
1	68.16	100.49	Open To Flow (1)
15	149.46	109.92	Shut-In(1)
45	1353.16	114.39	End Shut-In(1)
46	158.29	114.16	Open To Flow (2)
91	309.81	120.32	Shut-In(2)
184	1322.54	118.98	End Shut-In(2)
185	1873.92	119.04	Final Hydro-static

Recovery

Length (ft)	Description	Volume (bbl)
120.00	MCGO 30%M 10%G 60%O	0.59
603.00	GO 25%G 75%O	8.46
0.00	240 GIP	0.00

* Recovery from multiple tests

Gas Rates

Choke (inches)	Pressure (psig)	Gas Rate (Mcf/d)



TRILOBITE TESTING, INC.

DRILL STEM TEST REPORT

Red Oak Energy INC
 7701 E Kellogg Dr STE 710
 Wlchia KS 67207
 ATTN: Sean Deenihan

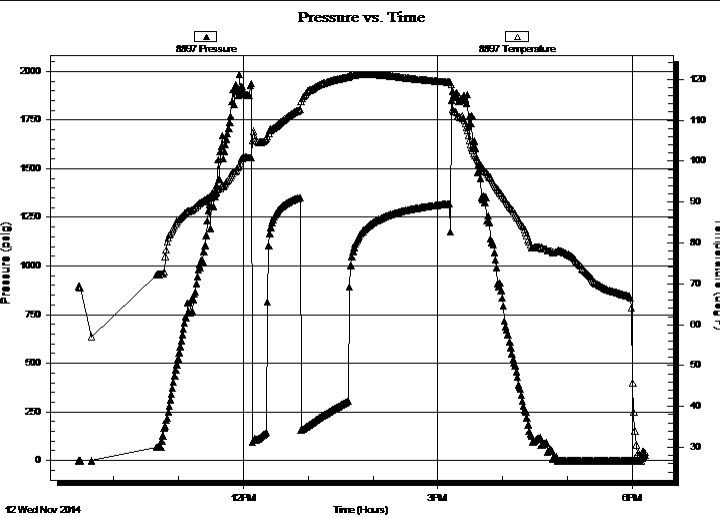
9-7-24 Graham Co.
Brown #9-1
 Job Ticket: 60688 **DST#: 2**
 Test Start: 2014.11.12 @ 09:27:14

GENERAL INFORMATION:

Formation: **LKC J**
 Deviated: No Whipstock: ft (KB)
 Time Tool Opened: 12:07:34
 Time Test Ended: 18:11:33
Interval: 3950.00 ft (KB) To 3974.00 ft (KB) (TVD)
 Total Depth: 3974.00 ft (KB) (TVD)
 Hole Diameter: 7.88 inches Hole Condition: Good
 Test Type: Conventional Bottom Hole (Reset)
 Tester: Tate Lang
 Unit No: 77
 Reference Elevations: 2523.00 ft (KB)
 2518.00 ft (CF)
 KB to GR/CF: 5.00 ft

Serial #: 8897 Inside
 Press @ Run Depth: psig @ 3951.00 ft (KB) Capacity: 8000.00 psig
 Start Date: 2014.11.12 End Date: 2014.11.12 Last Calib.: 2014.11.12
 Start Time: 09:27:26 End Time: 18:11:44 Time On Btm:
 Time Off Btm:

TEST COMMENT: 15-B.O.B. in 4 mins
 30-Fair surface blow back built to 4 in
 45-B.O.B. in 5 mins
 90-Fair surface blow back built to 6 in



PRESSURE SUMMARY			
Time (Min.)	Pressure (psig)	Temp (deg F)	Annotation

Recovery		
Length (ft)	Description	Volume (bbl)
120.00	MCGO 30%M 10%G 60%O	0.59
603.00	GO 25%G 75%O	8.46
0.00	240 GIP	0.00

Gas Rates			
	Choke (inches)	Pressure (psig)	Gas Rate (Mcf/d)

* Recovery from multiple tests



**TRILOBITE
TESTING, INC.**

DRILL STEM TEST REPORT

FLUID SUMMARY

Red Oak Energy INC

9-7-24 Graham Co.

7701 E Kellogg Dr STE 710
Wichita KS 67207

Brown #9-1

Job Ticket: 60688

DST#: 2

ATTN: Sean Deenihan

Test Start: 2014.11.12 @ 09:27:14

Mud and Cushion Information

Mud Type: Gel Chem

Cushion Type:

Oil API:

deg API

Mud Weight: 9.00 lb/gal

Cushion Length:

ft

Water Salinity:

ppm

Viscosity: 51.00 sec/qt

Cushion Volume:

bbbl

Water Loss: 6.40 in³

Gas Cushion Type:

Resistivity: ohm.m

Gas Cushion Pressure:

psig

Salinity: 1400.00 ppm

Filter Cake: 1.00 inches

Recovery Information

Recovery Table

Length ft	Description	Volume bbl
120.00	MCGO 30%M 10%G 60%O	0.590
603.00	GO 25%G 75%O	8.459
0.00	240 GIP	0.000

Total Length: 723.00 ft Total Volume: 9.049 bbl

Num Fluid Samples: 0

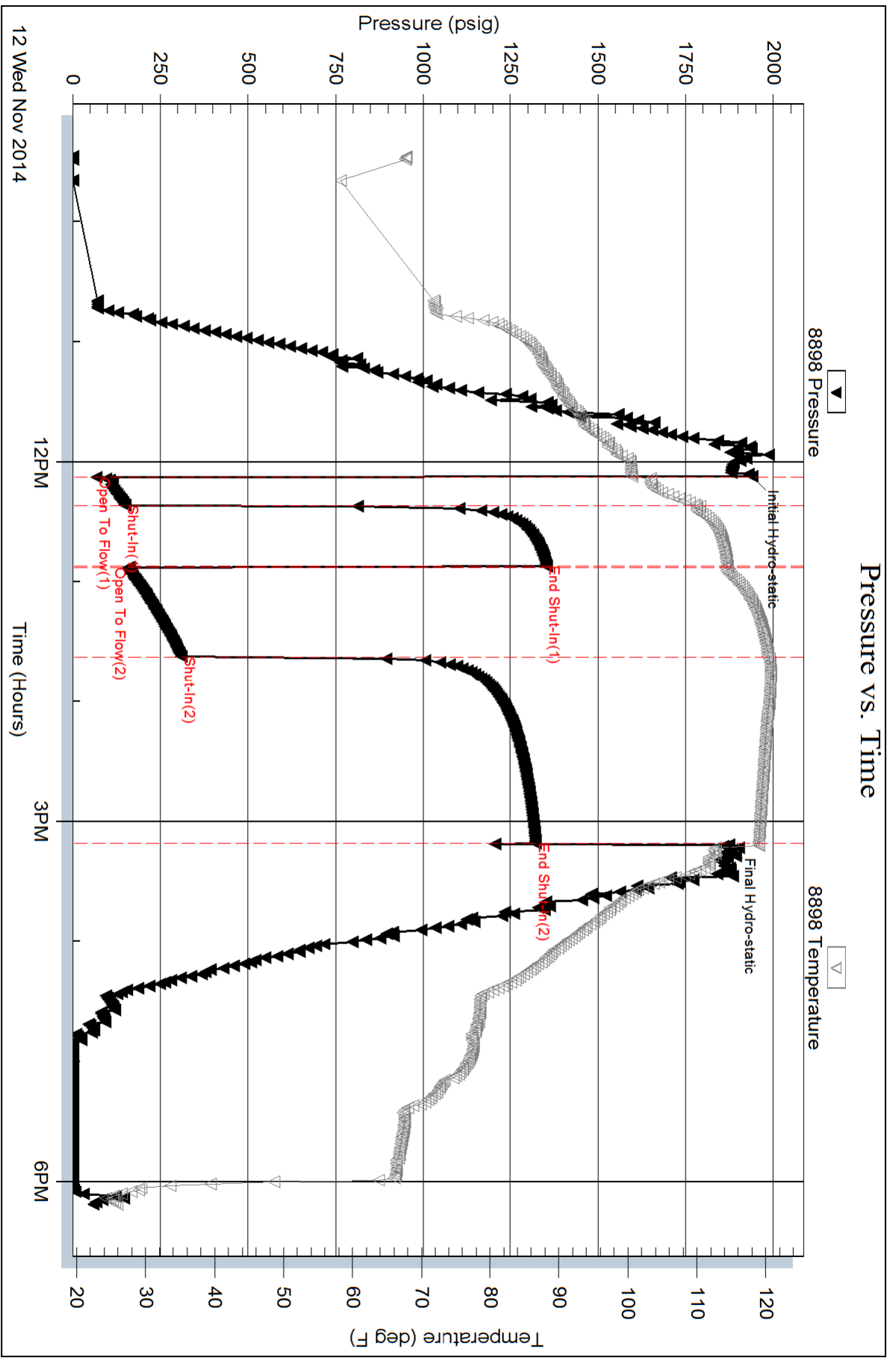
Num Gas Bombs: 0

Serial #:

Laboratory Name:

Laboratory Location:

Recovery Comments:



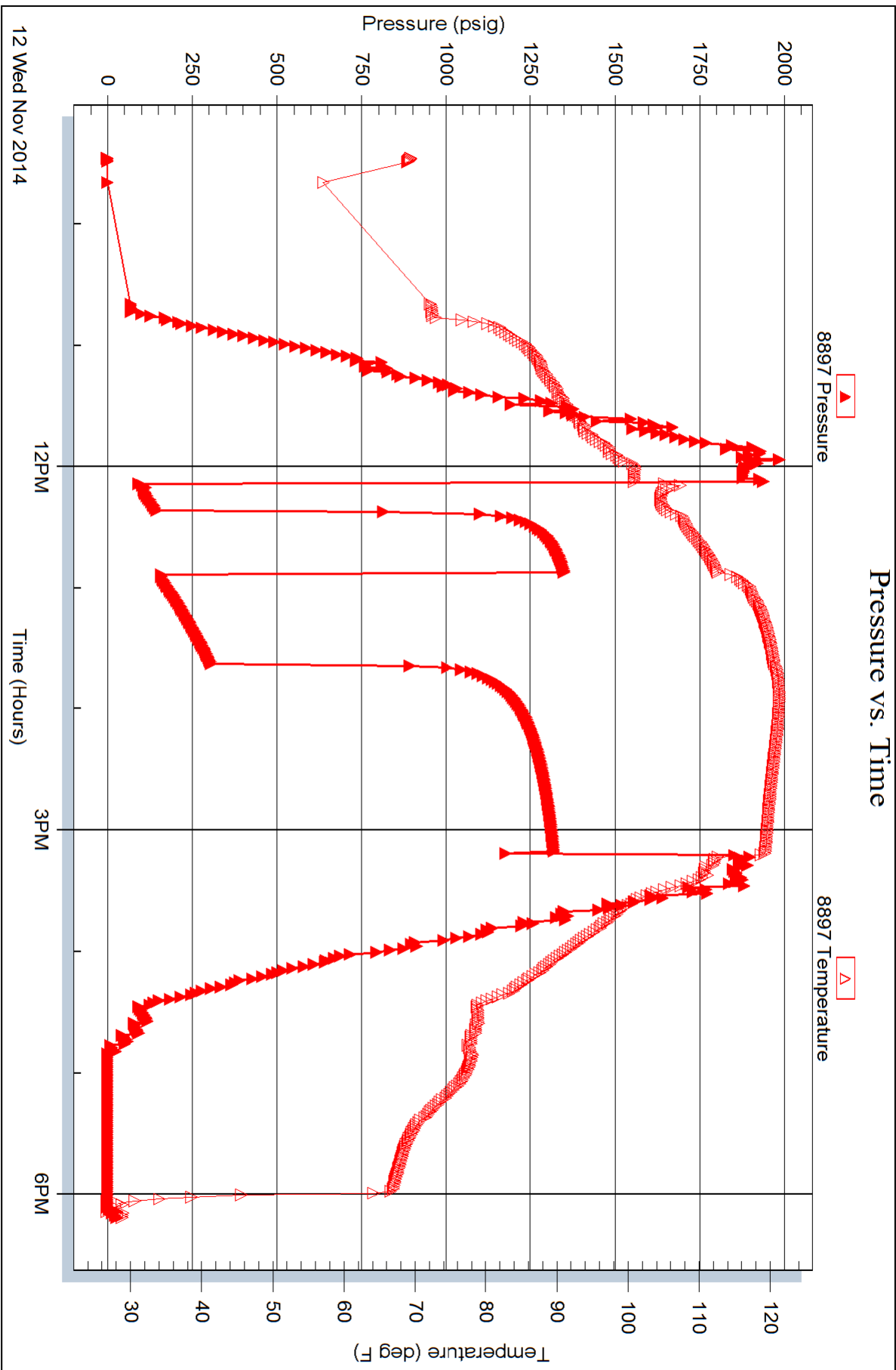
Serial #: 8897

Inside

Red Oak Energy INC

Brown #9-1

DST Test Number: 2



Trilobite Testing, Inc

Ref. No: 60688

Printed: 2014.11.12 @ 19:17:07



**TRILOBITE
TESTING, INC**

DRILL STEM TEST REPORT

Red Oak Energy INC
7701 E Kellogg Dr STE 710
Wichita KS 67207
ATTN: Sean Deenihan

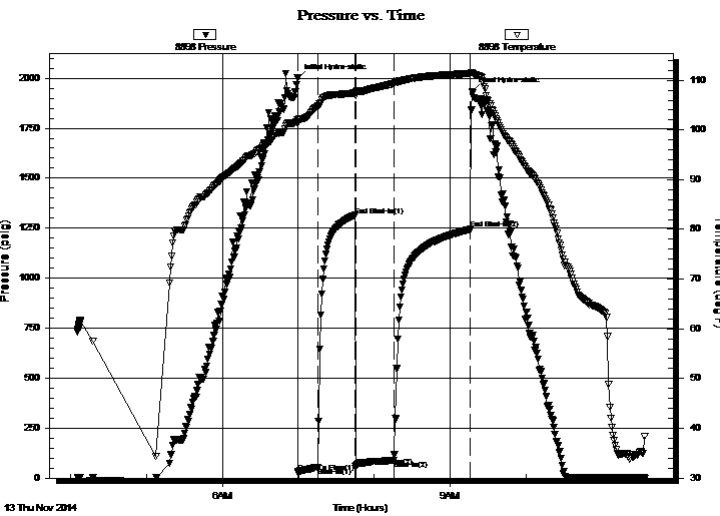
9-7-24 Graham Co.
Brown #9-1
Job Ticket: 60689 **DST#: 3**
Test Start: 2014.11.13 @ 04:05:38

GENERAL INFORMATION:

Formation: **LKC K**
Deviated: No Whipstock: ft (KB)
Time Tool Opened: 06:59:18
Time Test Ended: 11:33:58
Interval: **3978.00 ft (KB) To 4012.00 ft (KB) (TVD)**
Total Depth: 4012.00 ft (KB) (TVD)
Hole Diameter: 7.88 inches Hole Condition: Good
Test Type: Conventional Bottom Hole (Reset)
Tester: Tate Lang
Unit No: 77
Reference Elevations: 2523.00 ft (KB)
2518.00 ft (CF)
KB to GR/CF: 5.00 ft

Serial #: 8898 Outside
Press@RunDepth: 88.76 psig @ 3979.00 ft (KB) Capacity: 8000.00 psig
Start Date: 2014.11.13 End Date: 2014.11.13 Last Calib.: 2014.11.13
Start Time: 04:05:39 End Time: 11:33:58 Time On Btm: 2014.11.13 @ 06:59:08
Time Off Btm: 2014.11.13 @ 09:16:58

TEST COMMENT: 15-Weak surface blow built to 1 1/2 in
30-Dead no blow back
30-Weak surface blow built to 3 1/2 in
60-Dead no blow back



PRESSURE SUMMARY

Time (Min.)	Pressure (psig)	Temp (deg F)	Annotation
0	2000.41	102.09	Initial Hydro-static
1	28.67	101.32	Open To Flow (1)
16	54.87	104.67	Shut-In(1)
46	1314.20	107.42	End Shut-In(1)
46	60.48	106.94	Open To Flow (2)
76	88.76	109.31	Shut-In(2)
137	1244.48	111.34	End Shut-In(2)
138	1931.12	111.50	Final Hydro-static

Recovery

Length (ft)	Description	Volume (bbl)
120.00	SMCW 2%M 98%W	0.59
30.00	100%M w ith oil spots	0.42

* Recovery from multiple tests

Gas Rates

Choke (inches)	Pressure (psig)	Gas Rate (Mcf/d)



**TRILOBITE
TESTING, INC**

DRILL STEM TEST REPORT

FLUID SUMMARY

Red Oak Energy INC

9-7-24 Graham Co.

7701 E Kellogg Dr STE 710
Wichita KS 67207

Brown #9-1

Job Ticket: 60689

DST#: 3

ATTN: Sean Deenihan

Test Start: 2014.11.13 @ 04:05:38

Mud and Cushion Information

Mud Type: Gel Chem

Cushion Type:

Oil API:

deg API

Mud Weight: 9.00 lb/gal

Cushion Length:

ft

Water Salinity:

70000 ppm

Viscosity: 57.00 sec/qt

Cushion Volume:

bbbl

Water Loss: 6.40 in³

Gas Cushion Type:

Resistivity: ohm.m

Gas Cushion Pressure:

psig

Salinity: 1300.00 ppm

Filter Cake: 1.00 inches

Recovery Information

Recovery Table

Length ft	Description	Volume bbbl
120.00	SMCW 2%M 98%W	0.590
30.00	100%M with oil spots	0.421

Total Length: 150.00 ft Total Volume: 1.011 bbl

Num Fluid Samples: 0

Num Gas Bombs: 0

Serial #:

Laboratory Name:

Laboratory Location:

Recovery Comments: .371 @ 20 F = 70000

