

# ADVANTAGE ELEVATIONS

OIL FIELD SURVEYORS

BOX 8604 - PRATT, KS 67124  
(620) 672-6491

1113142

INVOICE NO.

LOTUS OPERATING CO LLC

OPERATOR

5

NO.

ACHENBACH

FARM

BARBER

COUNTY

1

S

35s

T

13w

R

1485' FNL & 660' FWL of Sec

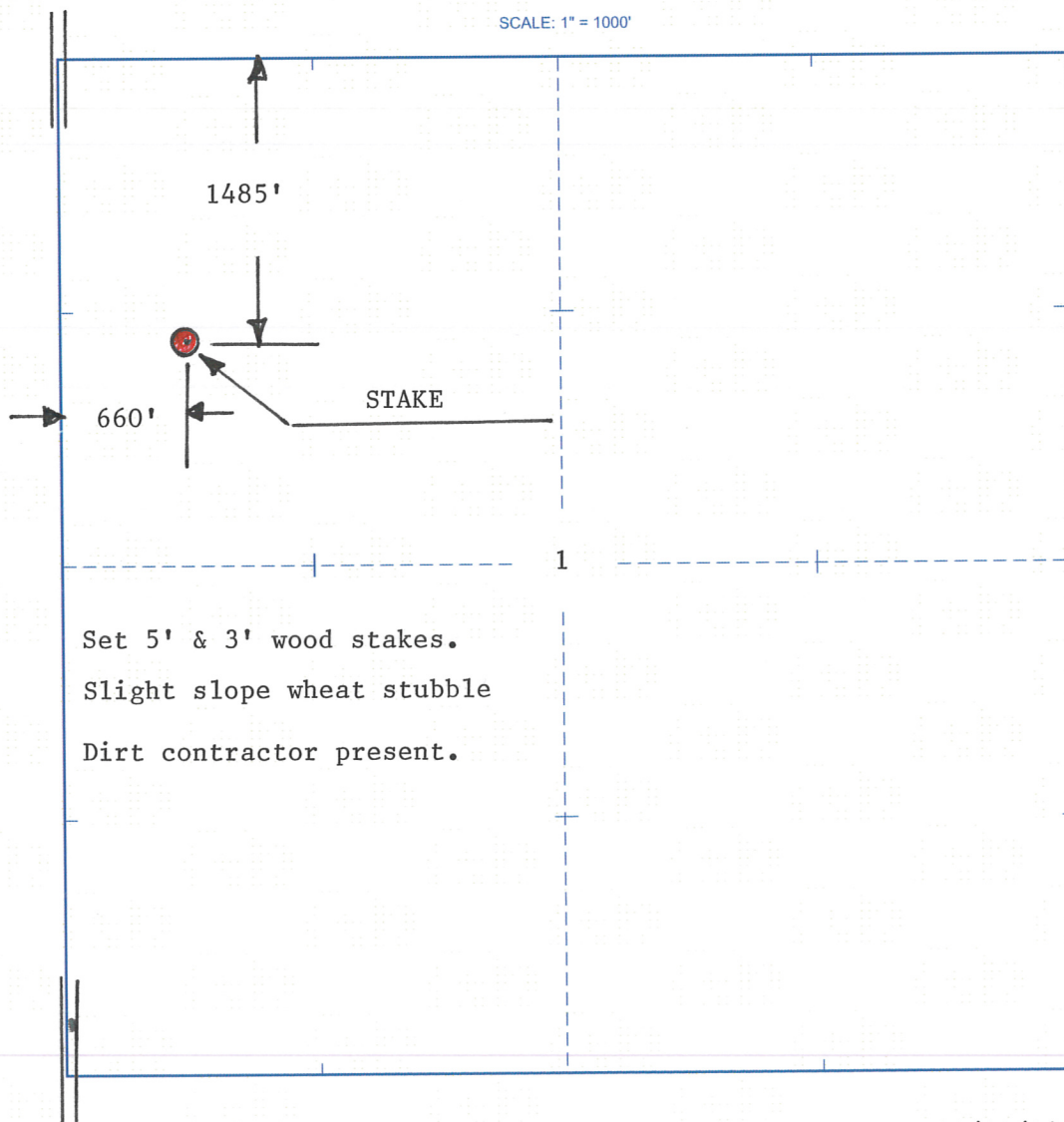
LOCATION

ELEVATION: 1455' GR

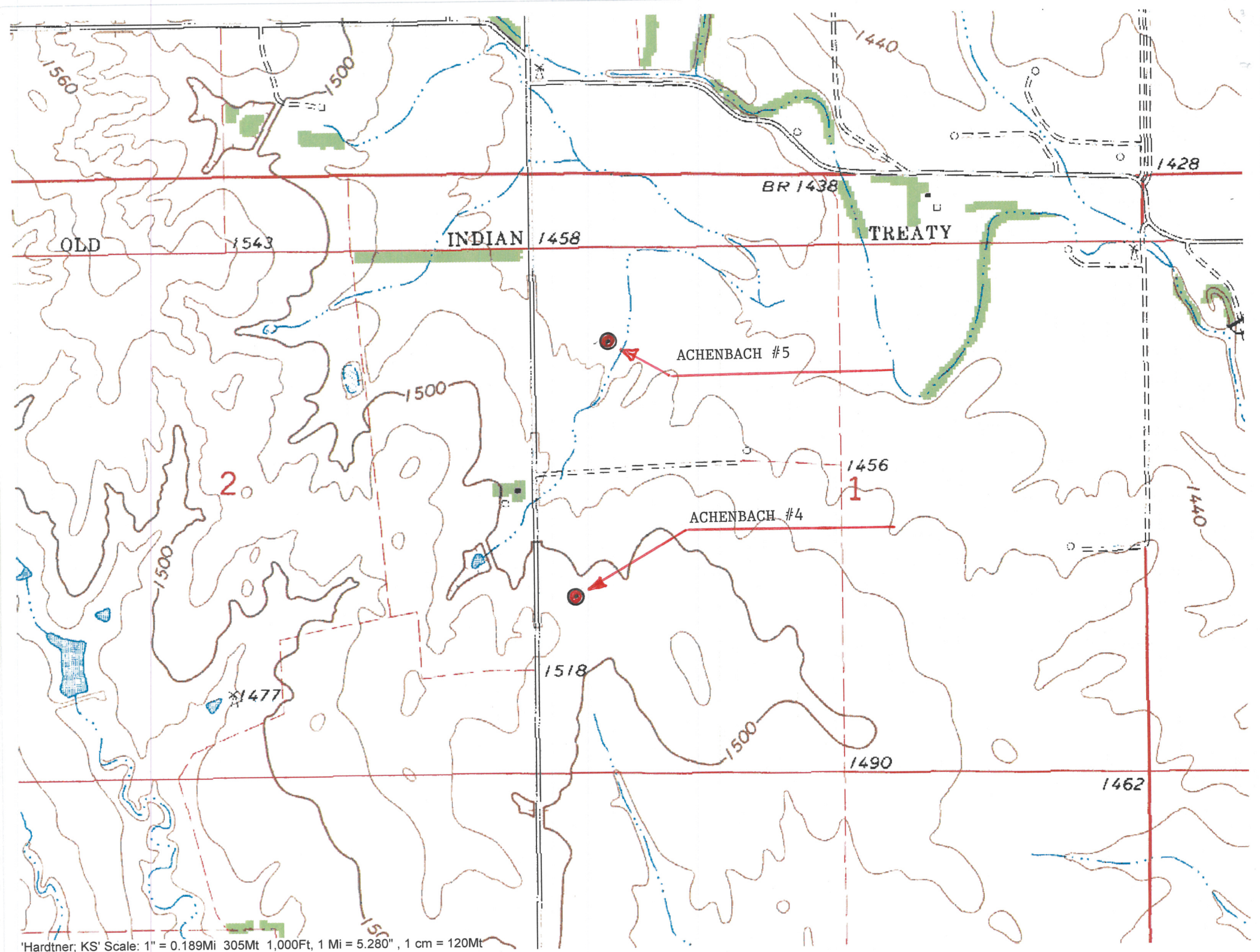


LOTUS OPERATING CO INC.  
100 S Main Ste 420  
Wichita, KS 6720

AUTHORIZED BY: \_\_\_\_\_



DATE STAKED: 11/13/14



'Hardtner, KS' Scale: 1" = 0.189Mi 305Mt 1,000Ft, 1 Mi = 5.280" , 1 cm = 120Mt