

ADVANTAGE ELEVATIONS

OIL FIELD SURVEYORS

BOX 8604 - PRATT, KS 67124
(620) 672-6491

1113143
INVOICE NO.

LOTUS OPERATING CO LLC
OPERATOR

4 ACHENBACH
NO. FARM

BARBER 1 35s 13w
COUNTY S T R

1565' FSL & 330' FWL of Sec.
LOCATION

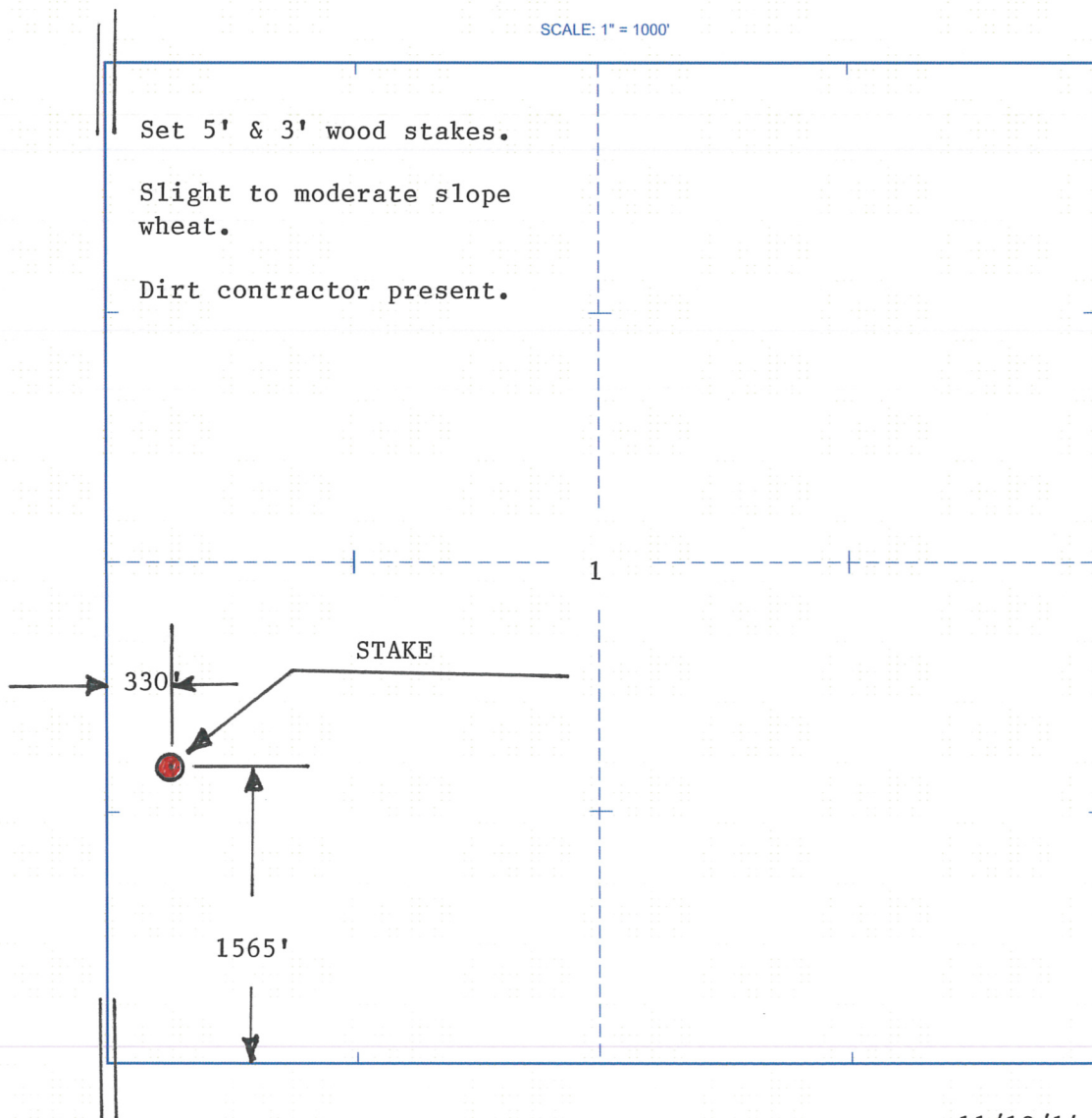
ELEVATION: 1508' GR



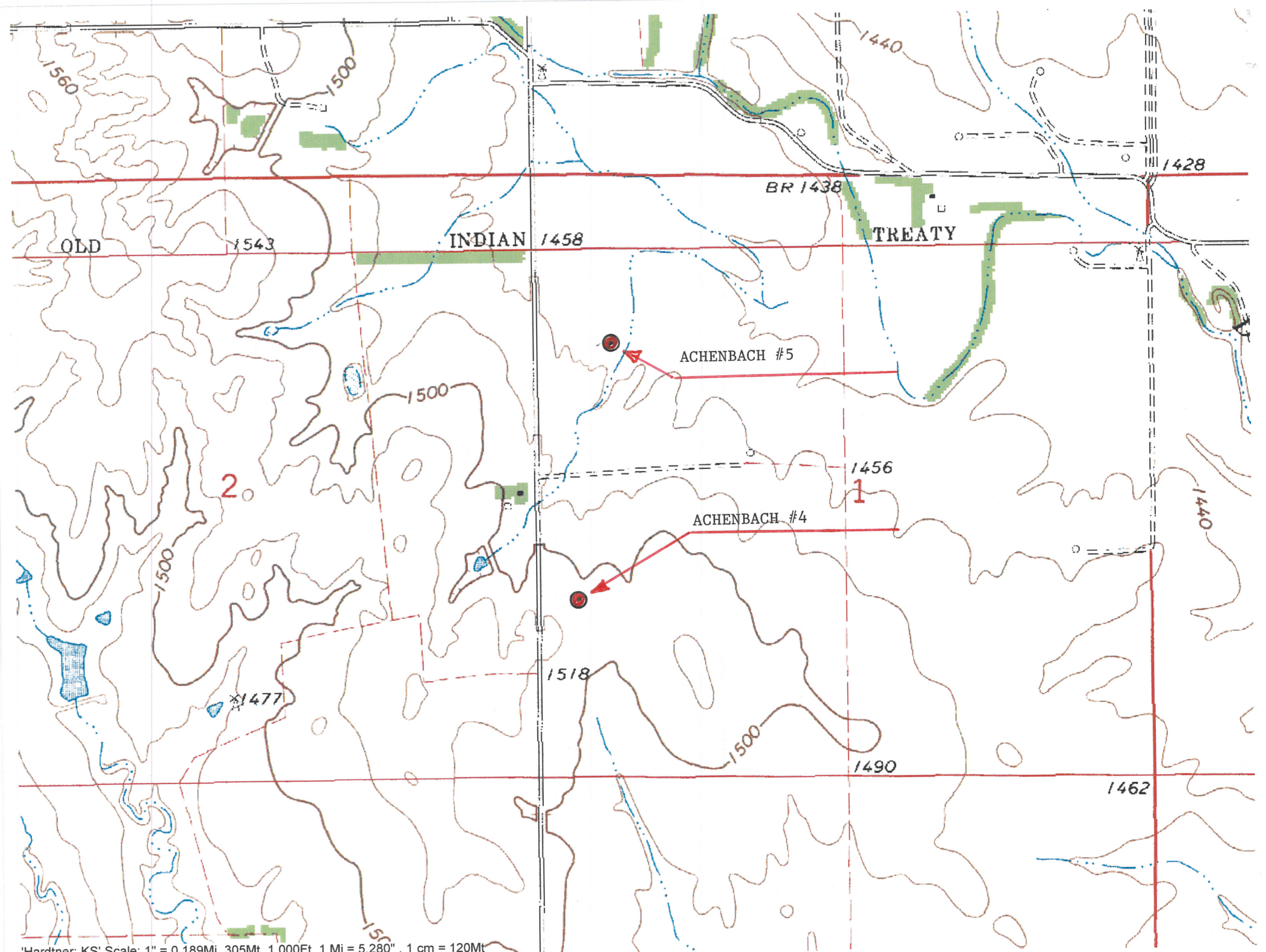
LOTUS OPERATING CO LLC
100 S Main Ste 420
Wichita, KS 67202

AUTHORIZED BY: Tim Hellman

SCALE: 1" = 1000'



DATE STAKED: 11/13/14



'Hardtner, KS' Scale: 1" = 0.189Mi 305Mt 1,000Ft, 1 Mi = 5.280" , 1 cm = 120Mt