



CONSOLIDATED
Oil Well Services, LLC

REMIT TO
Consolidated Oil Well Services, LLC
Dept. 970
P.O. Box 4346
Houston, TX 77210-4346

MAIN OFFICE
P.O. Box 884
Chanute, KS 66720
620/431-9210, 1-800/467-8676
Fax 620/431-0012

INVOICE

Invoice # 802032

Invoice Date: 11/21/2014

Terms: Net 30

Page

1

LARIO OIL & GAS
P.O. BOX 1093
GARDEN CITY KS 637846
USA
3162655611

KNAPP #8-31

Drilling after 14-223
11-24-14 LK

Part Number	Description	Qty	Unit Price	Discount(%)	Total
5401S	Cement Pump Truck - <u>Surface</u>	1.00	1,150.00	15.00	977.50
5406	Mileage Charge	10.00	5.25	15.00	44.63
5407A	Ton Mileage Delivery Charge	1.00	430.00	15.00	365.50
1104S	Class A Cement	165.00	18.55	15.00	2,601.64
1102	Calcium Chloride (50#)	547.00	0.94	15.00	437.05
1118B	Premium Gel / Bentonite	310.00	0.27	15.00	71.15
Sub Total					5,291.13
Discounted Amount					793.67
SubTotal After Discount					4,497.47

xe
[Signature]
NOV 27 2014
xe

Amount Due 5,580.16 if paid after 12/21/2014

Tax: 245.68
Total: 4,743.15



CONSOLIDATED
Oil Well Services, LLC

812

TICKET NUMBER 47783 ⁸¹²⁻⁹¹¹

INVOICE # 802032

LOCATION Oakley KS
FOREMAN Dane Retzlaff

PO Box 884, Chanute, KS 66720
620-431-9210 or 800-467-8676

FIELD TICKET & TREATMENT REPORT
CEMENT

KS

DATE	CUSTOMER #	WELL NAME & NUMBER	SECTION	TOWNSHIP	RANGE	COUNTY
10/8/14	4793	Knapp 8-31	31	13	31	Grove
CUSTOMER 11-8-14 <u>Lario</u>			Navajo RD 2 East 1/4 South East into			
MAILING ADDRESS			TRUCK #	DRIVER	TRUCK #	DRIVER
CITY			399	Mive		
STATE			397	Rob		
ZIP CODE				Colin		

JOB TYPE Surface HOLE SIZE 12 1/4 HOLE DEPTH 237 CASING SIZE & WEIGHT 8 5/8 29 LBS
 CASING DEPTH 235 DRILL PIPE _____ TUBING _____ OTHER _____
 SLURRY WEIGHT 14.8 SLURRY VOL 1.36 WATER gal/sk 6.5 CEMENT LEFT In CASING 20
 DISPLACEMENT 13.8 DISPLACEMENT PSI _____ MIX PSI _____ RATE _____

REMARKS: Safety meeting. Rig up. Break circulation. mix 165 SKS class A Cement 390 cc 290 gal. Displace 13.8 BBLs of water. Shut in. Cement did circulate.

Thanks Dane & crew

ACCOUNT CODE	QUANTITY or UNITS	DESCRIPTION of SERVICES or PRODUCT	UNIT PRICE	TOTAL
5405	1	PUMP CHARGE	1150.00	1150.00
5406	10	MILEAGE	5.25	52.50
5407A	7.75	Ton Mileage Delivery (min)	1.75	430.00
11043	165 SKS	Class A cement	18.55	3060.75
1102	547	Calcium Chloride	.94	514.18
1118A	310	Bentonite	.27	83.70
			Sub	5291.13
			less 15%	793.67
			Total	4497.46
			SALES TAX	245.68
			ESTIMATED TOTAL	4743.14

Rev'n 3737

AUTHORIZATION [Signature] TITLE _____ DATE _____

I acknowledge that the payment terms, unless specifically amended in writing on the front of the form or in the customer's account records, at our office, and conditions of service on the back of this form are in effect for services identified on this form.



CONSOLIDATED
Oil Well Services, LLC

REMIT TO
Consolidated Oil Well Services, LLC
Dept:970
P.O.Box 4346
Houston, TX 77210-4346

MAIN OFFICE

P.O.Box 884
Chanute, KS 66720
620/431-9210, 1-800/467-8676
Fax 620/431-0012

Invoice

Invoice#

802378

Invoice Date: 11/30/14

Terms: Net 30

Page 1

LARIO OIL & GAS

P.O. BOX 1093
GARDEN CITY KS 637846
USA
3162655611

KNAPP 8-31

Drilling afc 14-223
12-8-14 *JK*

Part No	Description	Quantity	Unit Price	Discount(%)	Total
5401C	Single Pump	1.000	3,175.0000	15.000	2,698.75
5406	Mileage Charge	10.000	5.2500	15.000	44.63
5407A	Ton Mileage Delivery Charge	1.000	501.0200	15.000	425.87
1126	Oil Well Cement	170.000	23.7000	15.000	3,424.65
1131	60/40 Poz Mix	480.000	15.8600	15.000	6,470.88
1118B	Premium Gel / Bentonite	3,302.000	0.2700	15.000	757.81
1110A	Kol Seal (50# BAG)	850.000	0.5600	15.000	404.60
1107	Flo-Seal	120.000	2.9700	15.000	302.94
4159	Float Shoe AFU 5 1/2	1.000	433.7500	15.000	368.69
4454	5 1/2 Latch Down Plug	1.000	567.0000	15.000	481.95
4130	Centralizer 5 1/2	9.000	61.0000	15.000	466.65
4104	Cement Basket 5 1/2	1.000	290.0000	15.000	246.50
4277A	DV Tool Weatherford 5 1/2	1.000	4,900.0000	15.000	4,165.00
1144G-0130	Mud Flush - Oakley	500.000	1.0000	15.000	425.00

Subtotal 24,334.01

Discounted Amount 3,650.10

SubTotal After Discount 20,683.91

Amount Due 25,961.84 If paid after 12/30/14

Tax: 1,383.66

Total: 22,067.58

JK
DEC 0 2014
JK



CONSOLIDATED
Oil Well Services, LLC

PO Box 884, Chanute, KS 66720
620-431-9210 or 800-467-8676

1119

1102
1178

TICKET NUMBER 47743
LOCATION Oakley, KS
FOREMAN Kelly Cable
Miles Shaw

INVOICE # 802378
FIELD TICKET & TREATMENT REPORT
CEMENT

DATE	CUSTOMER #	WELL NAME & NUMBER	SECTION	TOWNSHIP	RANGE	COUNTY
11-19-14	4793	Knapp 8-31	31	13	31	Goove
CUSTOMER <u>Lario</u>			Oakley			
MAILING ADDRESS			TRUCK #	DRIVER	TRUCK #	DRIVER
CITY			5 to Navajo	456 FT 129	Jordan	
STATE			2E 1/2 S	397	Lance	
ZIP CODE			E into	528 FT 127	Lance	

JOB TYPE Prod 2 stage HOLE SIZE 7 7/8 HOLE DEPTH 4700' CASING SIZE & WEIGHT 5 1/2" 14#
CASING DEPTH 4689' DRILL PIPE _____ TUBING _____ OTHER DV @ 2464
SLURRY WEIGHT 143, 125 SLURRY VOL _____ WATER gal/sk _____ CEMENT LEFT in CASING 18.25
DISPLACEMENT 114, 62 DISPLACEMENT PSI _____ MIX PSI _____ RATE _____

REMARKS: Safety meeting, rigged up on val #1 ran float equip. on JTS
Cent 1, 2, 5, 8, 11, 14, 17, 50, 53 basket on bottom #52 DV Top #52 @ 2464
ran pipe to bottom & circulated for hrs, pumped 5 bbl water, mud flush, 5 bbl
mixed 170 SKS OWC 5# gilsonite, cleaned pumps, displaced plug with 1.50 bbl water + 64 bbl
mud, lift pressure 700 # Plug landed @ 1200 # dropped DV bomb, opened DV tool & circulated
for 3 hrs mixed 30 SKS RH 20 SKS MH, mixed 430 SKS 60/40 R02 89 gal 1/4 # flo seal
down center, washed pumps, displaced plug with 0.2 bbl water, lift 700 #
Plug landed release d pressure float held APPROX 30 bbl top it
Cement did circulate
Thank you
Kelly, Miles & crew

ACCOUNT CODE	QUANTITY or UNITS	DESCRIPTION of SERVICES or PRODUCT	UNIT PRICE	TOTAL
5401C	1	PUMP CHARGE	3175.00	3175.00
5406	10	MILEAGE	52.50	525.00
5407A	28.63	Ton mileage delivery	17.50	501.02
1126	170 SKS	OWC	23.70	4029.00
1131	480 SKS	60/40 R02	15.86	7623.00
1118B	3302 #	Bentonite	1.27	8925.94
1110A	850 #	Kol-seal	5.60	4760.00
1107	120 #	Flo-seal	2.97	356.40
4159	1	5 1/2 AFU float shoe (w)	433.25	433.25
4454	1	5 1/2 latch down/w Plug (w)	567.00	567.00
4130	9	5 1/2 centralizer (w)	61.00	549.00
4104	1	5 1/2 basket (w)	290.00	290.00
4277	1	DV Tool (w)	4900.00	4900.00
11446	500 gal	mud flush	1.00	500.00
		SUB- 247160.51		24,259.00
		-15% = 3714.08		3575.19
		21046.43		20,683.91
		SALES TAX		1383.66
		ESTIMATED TOTAL		22,067.57

RAVIN 3737
AUTHORIZATION Darin L. Daniel TITLE _____ DATE 11-19-14

I acknowledge that the payment terms, unless specifically amended in writing on the front of the form or in the customer's account records, at our office, and conditions of service on the back of this form are in effect for services identified on this form.

TERMS

In consideration of the prices to be charged for Consolidated Oil Well Services, LLC (COWS) services, equipment and products and for the performance of services and supplying of materials, Customer agrees to the following terms and conditions.

Terms. Cash in advance unless satisfactory credit is established. On credit sales, invoices are payable within 30 days of the invoice date. On all invoices not paid within 30 days, Customer agrees to pay COWS interest at the rate of 18% per annum or the maximum rate allowed by law, whichever is higher. In the event COWS retains an attorney to pursue collection of any account, Customer agrees to pay all collection costs and attorney's fees incurred by COWS.

Any applicable federal, state or local sales, use occupation, consumer's or emergency taxes shall be added to the quoted price. All process license fees required to be paid to others will be added to the scheduled prices.

All COWS' prices are subject to change without notice.

SERVICE CONDITIONS

Customer warrants that the well is in proper condition to receive the services, equipment, products and materials to be supplied by COWS. The Customer shall at all time have complete care, custody, and control of the well, the drilling and production equipment at the well, and the premises about the well. A responsible representative of the Customer shall be present to specify depths, pressures, or materials used for any service which is to be performed.

(a) COWS shall not be responsible for any claim, cause of action or demand (hereinafter referred to as a 'claim') for damage to property, or injury to or death of employees and representatives, of Customer or the well owner (if different from Customer), unless such damage, injury or death is caused by the willful misconduct or gross negligence of COWS, including but not limited to sub-surface damage and surface damage arising from sub-surface damage.

(b) Unless a claim is the result of the sole willful misconduct or gross negligence of COWS, Customer shall be responsible for and indemnify and hold COWS harmless from any claim for: (1) reservoir loss or damage, or property damage resulting from sub-surface pressure, losing control of the well and/or a well blowout; (2) damages as a result of a subsurface trespass, or an action in the nature thereof, arising from a service operation performed by COWS; (3) injury to or death of persons, other than employees of COWS, or damage to property (including, but not limited to, injury to the well); or any damages whatsoever, irrespective of cause, growing out of or in any way connected with the use of radioactive material in the well hole; and (4) well damage or reservoir damage caused by (i) loss of circulation, cement invasion, cement misplacement, pumping cement or cement plugs on wells with loss of circulation, including the failure to displace plug to proper depth, (ii) sub-surface pressure and resulting failure to complete pumping of cement or cement plug, including dehydration of cement slurry or flashing, plugged float shoe, annulus bridging or plugging, or (iii) down hole tools being lost or left in the well; or becoming stuck in the well for any reason and by any cause. COWS may furnish down hole tools and may supply supervision for the running and placement of such tools but will not be liable for any damage, loss or result caused by the use of such tools.

Furthermore; Customer will be responsible for the cost to replace such tools if they are lost or left in the well.

(c) COWS makes no guarantee of the effectiveness of any COWS' products, supplies or materials, or the results of any COWS' treatment or services.

(d) Because of the uncertainty of variable well conditions and the necessity of relying on facts and supporting services furnished by others, COWS is unable to guarantee the accuracy of any chart interpretation, research analysis, job recommendation or other data furnished by COWS. COWS' personnel will use their best efforts in gathering such information and their best judgement in interpreting it, but Customer agrees that COWS shall not be responsible for any damage arising from the use of such information except where due to COWS' gross negligence or willful misconduct in the preparation or furnishing of it.

(e) COWS may buy and re-sell to Customer down hole equipment, including but not limited to float equipment, DV tools, port collars, type A & B packers, and Customer agrees that COWS is not an agent or dealer for the companies who manufacture such items, and further agrees that Customer shall be solely responsible for and indemnify COWS against any claim with regard to the effectiveness, malfunction of, or functionality of such items.

WARRANTIES - LIMITATION OF LIABILITY

COWS warrants title to the products, supplies and materials, and that the same are free from defects in workmanship and materials. THERE ARE NO OTHER WARRANTIES, EXPRESS OR IMPLIED, NOR ANY WARRANTY OF MERCHANTABILITY OR FITNESS FOR PURPOSE WHICH EXTEND BEYOND THOSE STATED IN THE IMMEDIATELY PRECEDING SENTENCE. COWS's liability and Customer's exclusive remedy in any claim (whether in contract, tort, breach of warranty or otherwise,) arising out of the sale or use of any COWS' products, supplies, materials or services is expressly limited to the replacement of such products, supplies, materials or services or their return to COWS or, at COWS' option, an allowance to Customer of credit for the cost of such items.

Customer waives and releases all claims against COWS for any special, incidental, indirect, consequential or punitive damages.

Consolidated oil well services

Thursday, September 25, 2014
9:15 AM

Bottom
170 SX OWC 5# KOLSEAL

cement bid for: LARIO OIL&GAS

Type of job PRODUCTION 5 1/2-4750',1,150' FILL, DV@2350'

Lease- KNAPP #8-31

County-GOVE

State- KS

Legals-SEC 31-13S-31W

7.99

Top 480 SX 60/40 88%#
Pls

BOTTOM STAGE: 180 SKS OWC,5# KOLSEAL,500 GAL MUD FLUSH

YIELD 1.42@13.8

TOP STAGE: 450 SKS 60/40POZ,8%GEL,1/4# FLO SEAL

YIELD 1.89@12.5

Pump truck- 3,175.00

10 miles- 52.50

TOTAL=3,227.50

180 SKS OWC-4,266.00

450 SKS 60/40POZ-7,137.00

3,096# GEL - 835.92

900# KOLSEAL-504.00

113# FLOSEAL-335.61

500 GAL MUD

FLUSH -500.00

27.81 TON MILES-486.70

TOTAL= 14,065.23

FLOAT EQUIPMENT 5 1/2

1-AFU FLOAT SHOE- 433.75

1-LATCH DOWN ASSY-567.00

16-CENTRALIZERS- 976.00

1-BASKET - 290.00

1-DV TOOL - 4,900.00

TOTAL= 7,166.75

PUMPTRUCK- 3,227.50

MATERIAL- 14,065.23

FLOAT EQUIPMENT-7,166.75

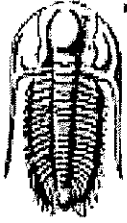
SUB TOTAL=24,459.48

LESS 15% -3,668.92

TOTAL= 20,790.56

TAX INCLUDED AT INVOICING

BID BY: WALT DINKEL



TRILOBITE TESTING, INC

DRILL STEM TEST REPORT

Lario Oil & Gas
 301 S. Market
 Wichita, Ks
 67202
 ATTN: Ian Bosmeijer

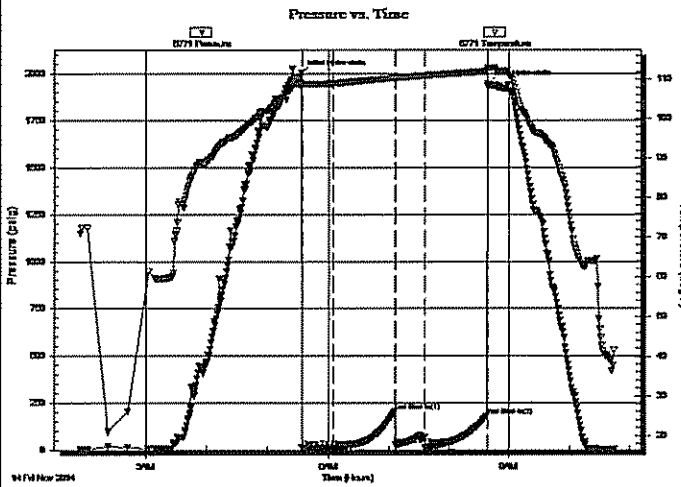
31-13s-31w Gove, Ks
Knapp #8-31
 Job Ticket: 59706 DST#: 1
 Test Start: 2014.11.14 @ 01:55:56

GENERAL INFORMATION:

Formation: D
 Deviated: No Whipstock: 0.00 ft (KB)
 Time Tool Opened: 05:33:56
 Time Test Ended: 10:55:26
 Interval: 4032.00 ft (KB) To 4055.00 ft (KB) (TVD)
 Total Depth: 4055.00 ft (KB) (TVD)
 Hole Diameter: 7.88 inches Hole Condition: Fair
 Test Type: Conventional Bottom Hole (Initial)
 Tester: Shane McBride
 Unit No: 55
 Reference Elevations: 2937.00 ft (KB)
 2927.00 ft (CF)
 KB to GR/CF: 10.00 ft

Serial #: 6771 Inside
 Press@RunDepth: 15.53 psig @ 4033.00 ft (KB) Capacity: 8000.00 psig
 Start Date: 2014.11.14 End Date: 2014.11.14 Last Calib.: 2014.11.14
 Start Time: 01:55:56 End Time: 10:44:26 Time On Btm: 2014.11.14 @ 05:33:41
 Time Off Btm: 2014.11.14 @ 08:38:41

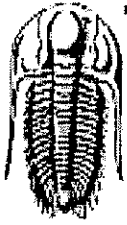
TEST COMMENT: 1/4" in @ open, died in 16 min.
 No return
 No blow
 No return



PRESSURE SUMMARY			
Time (Min.)	Pressure (psig)	Temp (deg F)	Annotation
0	2002.70	109.47	Initial Hydro-static
1	14.61	108.85	Open To Flow (1)
32	14.56	109.05	Shut-In(1)
93	203.97	110.47	End Shut-In(1)
93	22.02	110.42	Open To Flow (2)
123	15.53	110.98	Shut-In(2)
184	180.34	112.08	End Shut-In(2)
185	1945.74	112.97	Final Hydro-static

Recovery		
Length (ft)	Description	Volume (bbl)
1.00	mud 100% m	0.01

Gas Rates			
	Choke (inches)	Pressure (psig)	Gas Rate (Mcf/d)



**TRILOBITE
TESTING, INC**

DRILL STEM TEST REPORT

FLUID SUMMARY

Lario Oil & Gas

31-13s-31w Gove,Ks

301 S. Market
Wichita, Ks
67202

Knapp #8-31

Job Ticket: 59706

DST#: 1

ATTN: Ian Bosmeijer

Test Start: 2014.11.14 @ 01:55:56

Mud and Cushion Information

Mud Type: Gel Chem

Cushion Type:

Oil API:

0 deg API

Mud Weight: 9.00 lb/gal

Cushion Length:

ft

Water Salinity:

0 ppm

Viscosity: 52.00 sec/qt

Cushion Volume:

bbf

Water Loss: 7.96 in³

Gas Cushion Type:

Resistivity: 0.00 ohm.m

Gas Cushion Pressure:

psig

Salinity: 4500.00 ppm

Filter Cake: 1.00 inches

Recovery Information

Recovery Table

Length ft	Description	Volume bbf
1.00	mud 100%m	0.014

Total Length: 1.00 ft

Total Volume: 0.014 bbf

Num Fluid Samples: 0

Num Gas Bombs: 0

Serial #:

Laboratory Name:

Laboratory Location:

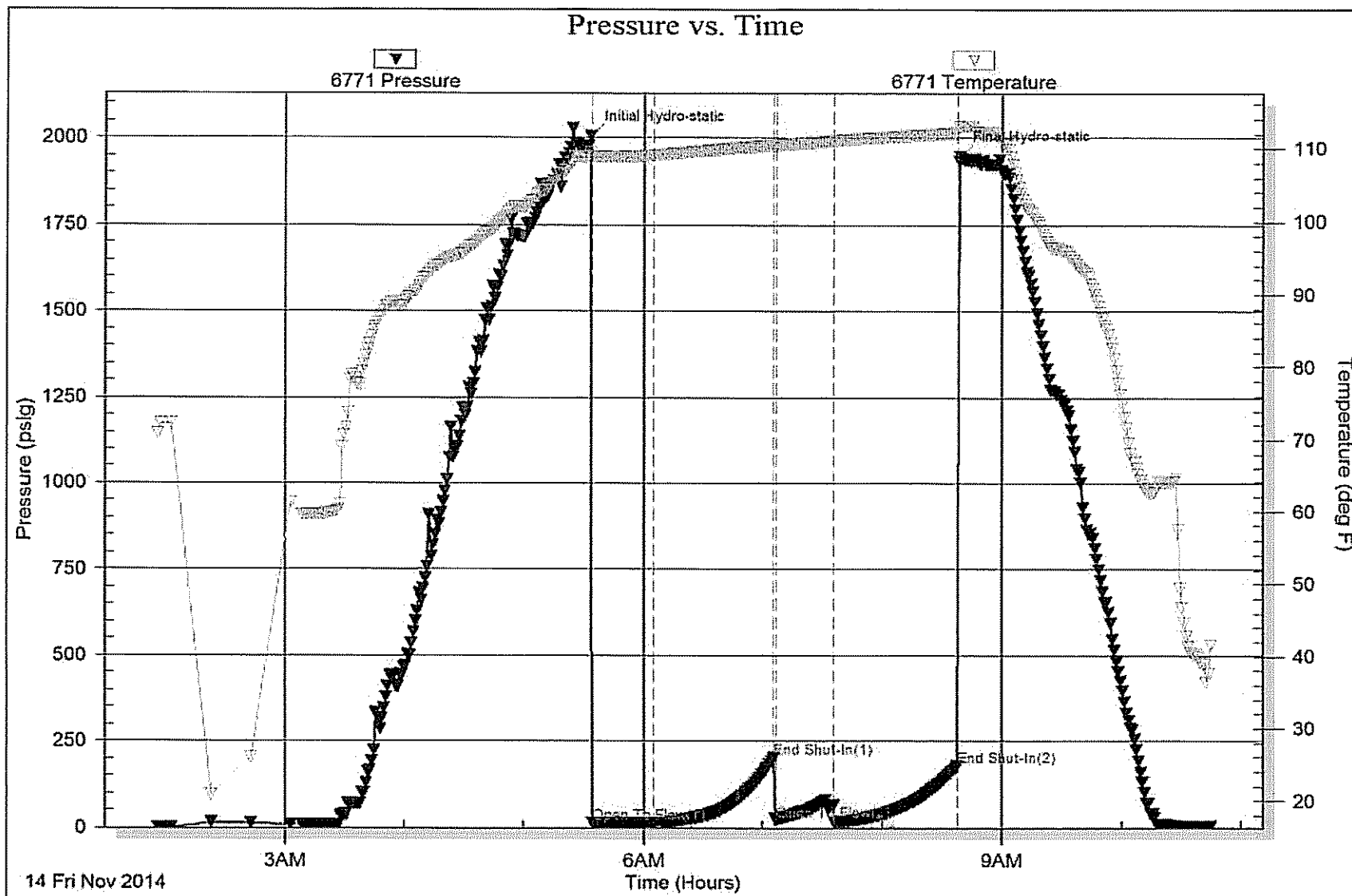
Recovery Comments:

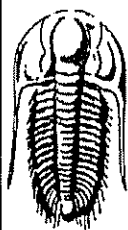
Serial #: 6771

Inside Lario Oil & Gas

Knapp #8-31

DST Test Number: 1





TRILOBITE TESTING, INC.

DRILL STEM TEST REPORT

Lario Oil & Gas
 301 S. Market
 Wichita, Ks
 67202
 ATTN: Ian Bosmaijer

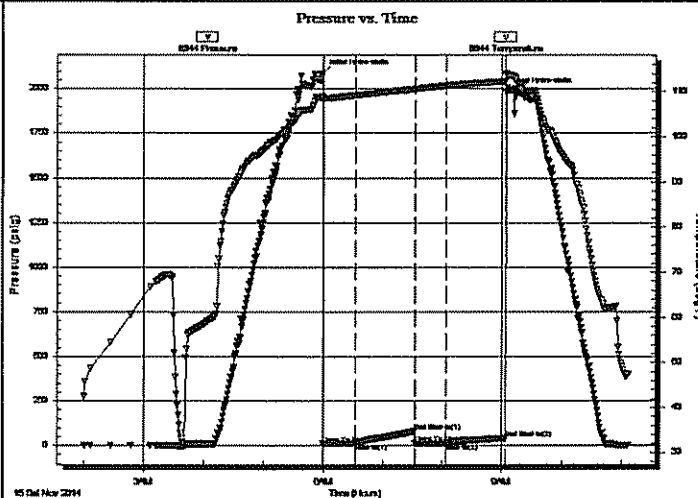
31-13s-31w Gove, Ks
Knapp #8-31
 Job Ticket: 59707 **DST#: 2**
 Test Start: 2014.11.15 @ 02:00:38

GENERAL INFORMATION:

Formation: **H**
 Deviated: **No** Whipstock: **0.00 ft (KB)**
 Time Tool Opened: **05:59:23**
 Time Test Ended: **11:15:38**
 Interval: **4118.00 ft (KB) To 4139.00 ft (KB) (TVD)**
 Total Depth: **4139.00 ft (KB) (TVD)**
 Hole Diameter: **7.88 inches** Hole Condition: **Fair**
 Test Type: **Conventional Bottom Hole (Reset)**
 Tester: **Shane McBride**
 Unit No: **55**
 Reference Elevations: **2937.00 ft (KB)**
2927.00 ft (CF)
 KB to GR/CF: **10.00 ft**

Serial #: 8844 **Outside**
 Press@RunDepth: **12.83 psig @ 4119.00 ft (KB)** Capacity: **8000.00 psig**
 Start Date: **2014.11.15** End Date: **2014.11.15** Last Calib.: **2014.11.15**
 Start Time: **02:00:38** End Time: **11:06:38** Time On Btm: **2014.11.15 @ 05:59:08**
 Time Off Btm: **2014.11.15 @ 09:04:23**

TEST COMMENT: Weak blow died in 7 min
 No return
 No blow
 No return



PRESSURE SUMMARY

Time (Min.)	Pressure (psig)	Temp (deg F)	Annotation
0	2089.18	108.92	Initial Hydro-static
1	9.02	108.27	Open To Flow (1)
33	11.54	109.22	Shut-In(1)
93	79.51	110.58	End Shut-In(1)
94	10.65	110.56	Open To Flow (2)
125	12.83	111.35	Shut-In(2)
185	41.82	112.37	End Shut-In(2)
186	1983.28	114.20	Final Hydro-static

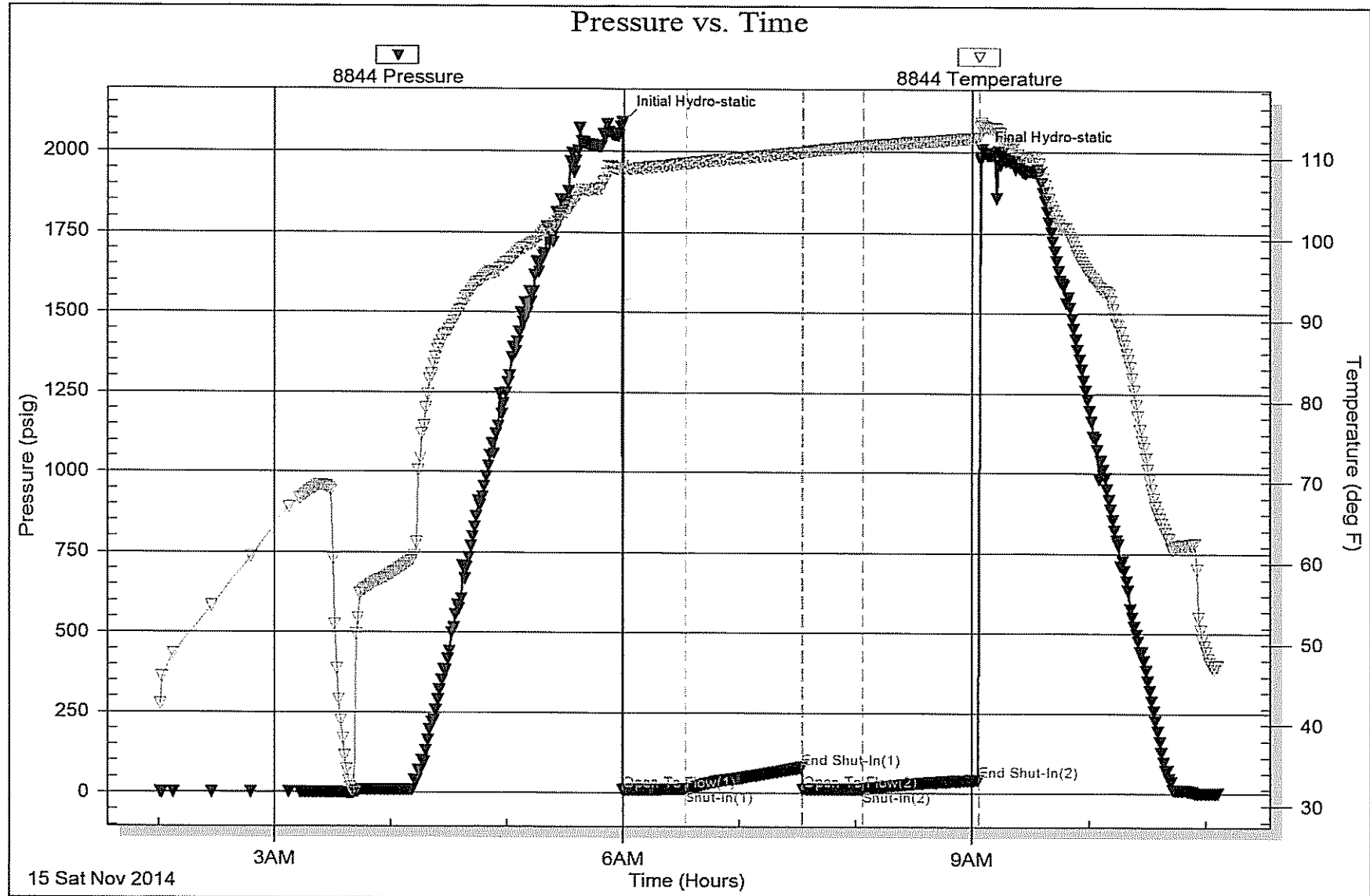
Recovery

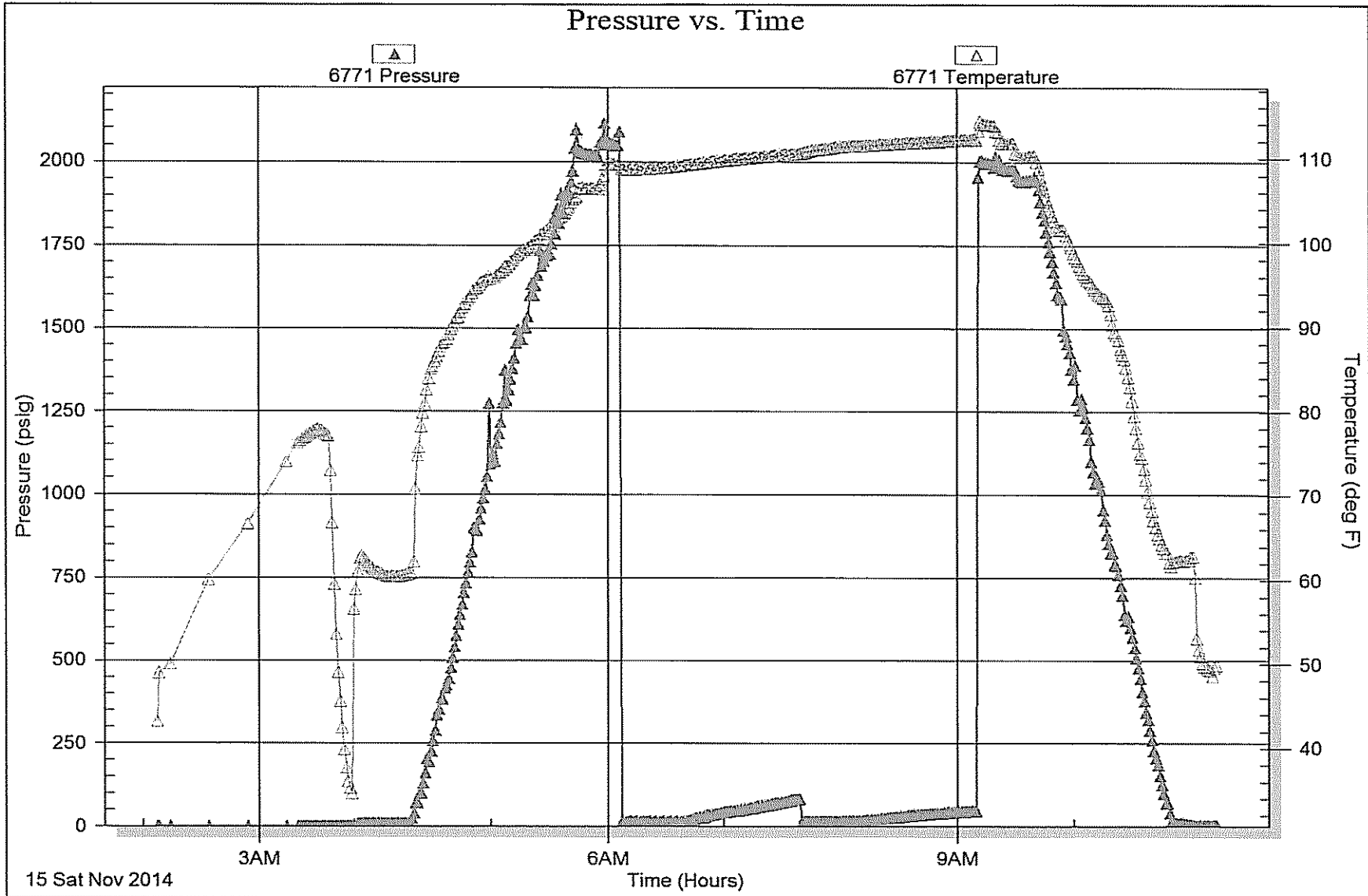
Length (ft)	Description	Volume (bbl)
2.00	mud w/ show of oil on top 2" in	0.03

* Recovery from multiple tests

Gas Rates

	Choke (inches)	Pressure (psig)	Gas Rate (Mcf/d)







TRILOBITE TESTING, INC.

DRILL STEM TEST REPORT

Lario Oil & Gas
 301 S. Market
 Wichita, Ks
 67202
 ATTN: Ian Bosmeijer

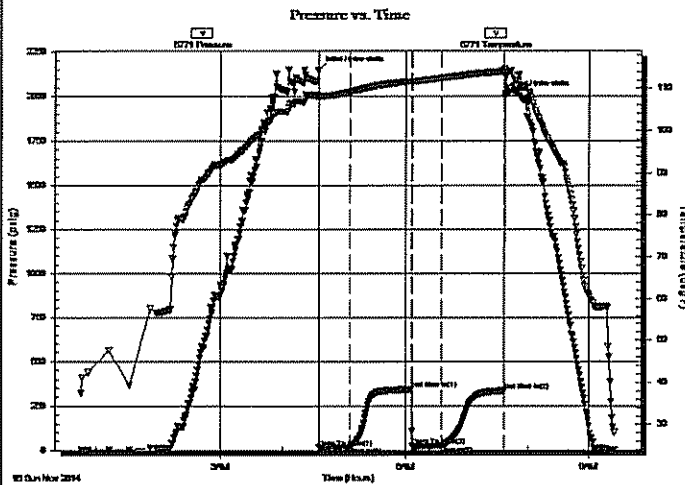
31-13s-31w Gove, Ks
Knapp #8-31
 Job Ticket: 59708 DST#: 3
 Test Start: 2014.11.16 @ 00:45:17

GENERAL INFORMATION:

Formation: J
 Deviated: No Whipstock: 0.00 ft (KB)
 Time Tool Opened: 04:35:17
 Time Test Ended: 09:40:32
 Interval: 4180.00 ft (KB) To 4205.00 ft (KB) (TVD)
 Total Depth: 4205.00 ft (KB) (TVD)
 Hole Diameter: 7.88 inches Hole Condition: Fair
 Test Type: Conventional Bottom Hole (Reset)
 Tester: Shane McBride
 Unit No: 55
 Reference Elevations: 2937.00 ft (KB)
 2927.00 ft (CF)
 KB to GR/CF: 10.00 ft

Serial #: 6771 Inside
 Press@RunDepth: 25.60 psig @ 4181.00 ft (KB) Capacity: 8000.00 psig
 Start Date: 2014.11.16 End Date: 2014.11.16 Last Calib.: 2014.11.16
 Start Time: 00:45:17 End Time: 09:25:32 Time On Btm: 2014.11.16 @ 04:35:02
 Time Off Btm: 2014.11.16 @ 07:37:32

TEST COMMENT: Weak blow died in 19 min.
 No return
 Very weak surface blow died in 5 min.
 No return



PRESSURE SUMMARY

Time (Min.)	Pressure (psig)	Temp (deg F)	Annotation
0	2150.61	108.62	Initial Hydro-static
1	17.48	108.10	Open To Flow (1)
31	21.22	109.19	Shut-In(1)
91	343.15	111.73	End Shut-In(1)
91	24.53	111.65	Open To Flow (2)
120	25.60	112.45	Shut-In(2)
181	336.62	114.04	End Shut-In(2)
183	2013.48	113.90	Final Hydro-static

Recovery

Length (ft)	Description	Volume (bbl)
5.00	mud w/oil spots	0.07
0.00	6" in free oil on top	0.00

* Recovery from multiple tests

Gas Rates

	Choke (inches)	Pressure (psig)	Gas Rate (Mcf/d)



**TRILOBITE
TESTING, INC.**

DRILL STEM TEST REPORT

FLUID SUMMARY

Lario Oil & Gas

31-13s-31w Gove, Ks

301 S. Market
Wichita, Ks
67202

Knapp #8-31

Job Ticket: 59708

DST#: 3

ATTN: Ian Bosmeijer

Test Start: 2014.11.16 @ 00:45:17

Mud and Cushion Information

Mud Type: Gel Chem

Cushion Type:

Oil API:

0 deg API

Mud Weight: 9.00 lb/gal

Cushion Length:

ft

Water Salinity:

0 ppm

Viscosity: 58.00 sec/qt

Cushion Volume:

bbbl

Water Loss: 7.97 in³

Gas Cushion Type:

Resistivity: 0.00 ohm.m

Gas Cushion Pressure:

psig

Salinity: 4800.00 ppm

Filter Cake: 1.00 inches

Recovery Information

Recovery Table

Length ft	Description	Volume bbbl
5.00	mud w/oil spots	0.070
0.00	6" in free oil on top	0.000

Total Length: 5.00 ft Total Volume: 0.070 bbl

Num Fluid Samples: 0

Num Gas Bombs: 0

Serial #:

Laboratory Name:

Laboratory Location:

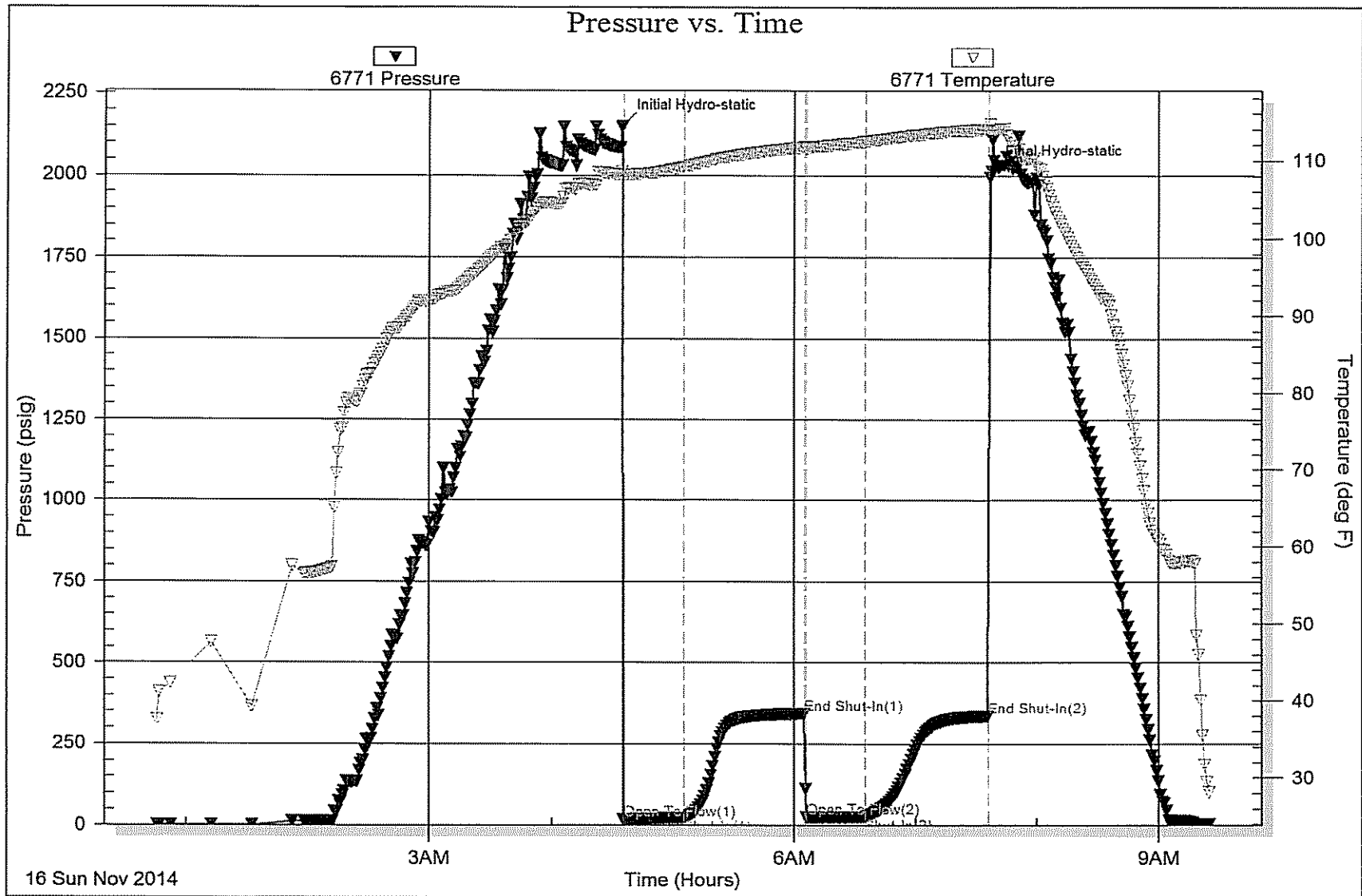
Recovery Comments:

Serial #: 6771

Inside Lario Oil & Gas

Knapp #8-31

DST Test Number: 3

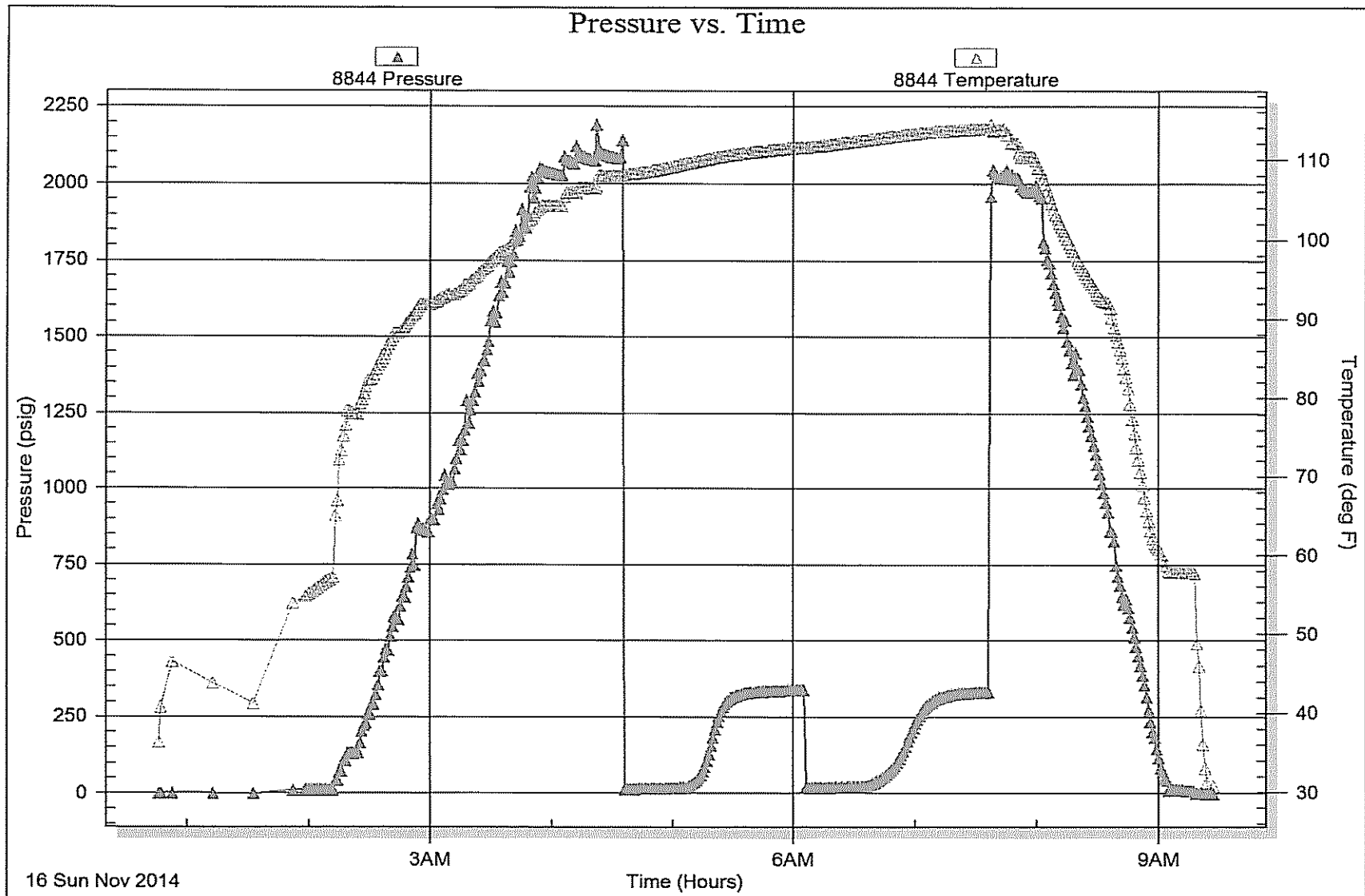


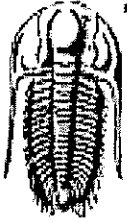
Serial #: 8844

Outside Lario Oil & Gas

Knapp #8-31

DST Test Number: 3





**TRILOBITE
TESTING, INC**

DRILL STEM TEST REPORT

Lario Oil & Gas

31-13s-31w Gove, Ks

301 S. Market
Wichita, Ks
67202
ATTN: Ian Bosmeijer

Knapp #8-31

Job Ticket: 59709

DST#: 4

Test Start: 2014.11.18 @ 07:06:11

GENERAL INFORMATION:

Formation: **Morrow**
Deviated: No Whipstock: 0.00 ft (KB)
Time Tool Opened: 09:19:56
Time Test Ended: 15:40:11

Test Type: Conventional Bottom Hole (Reset)
Tester: Shane McBride
Unit No: 55

Interval: 4548.00 ft (KB) To 4598.00 ft (KB) (TVD)
Total Depth: 4598.00 ft (KB) (TVD)
Hole Diameter: 7.88 inches Hole Condition: Fair

Reference Elevations: 2937.00 ft (KB)
2927.00 ft (CF)
KB to GR/CF: 10.00 ft

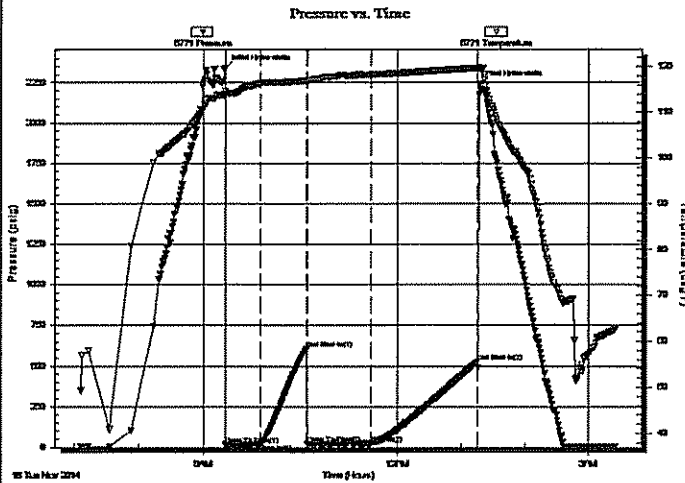
Serial #: 6771

Inside

Press@RunDepth: 23.94 psig @ 4549.00 ft (KB)
Start Date: 2014.11.18 End Date: 2014.11.18
Start Time: 07:06:11 End Time: 15:25:11

Capacity: 8000.00 psig
Last Calib.: 2014.11.18
Time On Bltm: 2014.11.18 @ 09:19:41
Time Off Bltm: 2014.11.18 @ 13:16:56

TEST COMMENT: 1/4" in @ open, died in 23 min.
No return
No blow
No return



PRESSURE SUMMARY

Time (Min.)	Pressure (psig)	Temp (deg F)	Annotation
0	2341.16	114.71	Initial Hydro-static
1	18.24	114.15	Open To Flow (1)
33	20.48	116.29	Shut-In(1)
77	607.08	116.95	End Shut-In(1)
77	21.64	116.62	Open To Flow (2)
136	23.94	118.25	Shut-In(2)
236	523.28	119.71	End Shut-In(2)
238	2240.53	119.78	Final Hydro-static

Recovery

Length (ft)	Description	Volume (bbl)
10.00	mud 100%	0.14

* Recovery from multiple tests

Gas Rates

	Choke (inches)	Pressure (psig)	Gas Rate (Mcf/d)



**TRILOBITE
TESTING, INC**

DRILL STEM TEST REPORT

FLUID SUMMARY

Lario Oil & Gas

31-13s-31w Gove, Ks

301 S. Market
Wichita, Ks
67202

Knapp #B-31

Job Ticket: 59709

DST#: 4

ATTN: Ian Bosmeijer

Test Start: 2014.11.18 @ 07:06:11

Mud and Cushion Information

Mud Type: Gel Chem

Cushion Type:

Oil API:

0 deg API

Mud Weight: 9.00 lb/gal

Cushion Length:

ft

Water Salinity:

0 ppm

Viscosity: 48.00 sec/qt

Cushion Volume:

bbl

Water Loss: 8.78 in³

Gas Cushion Type:

Resistivity: 0.00 ohm.m

Gas Cushion Pressure:

psig

Salinity: 4400.00 ppm

Filter Cake: 1.00 inches

Recovery Information

Recovery Table

Length ft	Description	Volume bbl
10.00	mud 100%	0.140

Total Length: 10.00 ft

Total Volume: 0.140 bbl

Num Fluid Samples: 0

Num Gas Bombs: 0

Serial #:

Laboratory Name:

Laboratory Location:

Recovery Comments:

