



Geologist's Report

Company: *Blueridge Petroleum Corporation*
Lease: *Juenemann #2-5*
Field: *Wildcat*
Location: *SW-SE-NE-SE (1370 FSL & 535 FEL)*
Sec: *5* **Twsp:** *3S* **Rge:** *24W*
County: *Norton* **State:** *Kansas*
GL: *2435'* **KB:** *2440'*

Contractor: *LD Drilling Rig #1*
Spud: *10/22/14* **Comp:** *10/29/14*
RTD: *3780'* **LTD:** *3779'*
Mud Up: *3000'* **Type Mud:** *Chemical/Displaced*

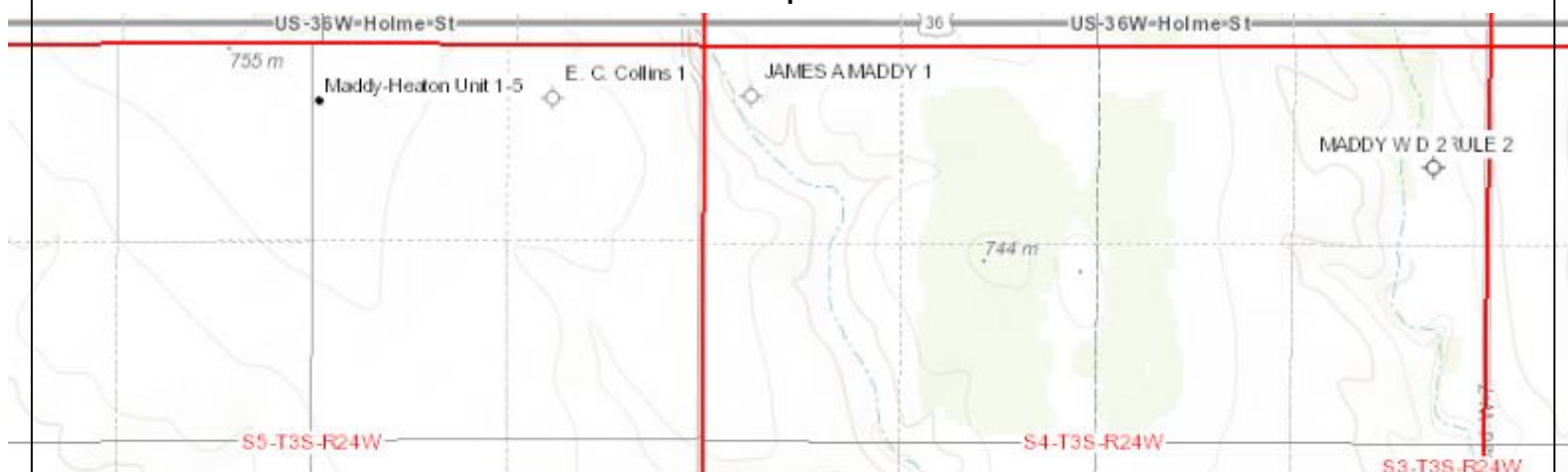
Samples Saved From: *3100' to RTD*
Drilling Time Kept From: *3100' to RTD*
Samples Examined From: *3200' to RTD*
Geological Supervision From: *3200' to RTD*
Geologist on Well: *Clint Musgrove and Jim Musgrove*

Surface Casing: *8 5/8" @*
Production: *5 1/2 @ 3779'*

Logs: *By: Nabors: CNL/CDL, DIL, MEL, SONIC*

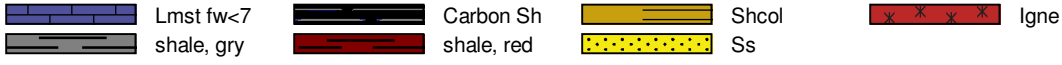
Well Comparison Sheet

Well Comparison 25





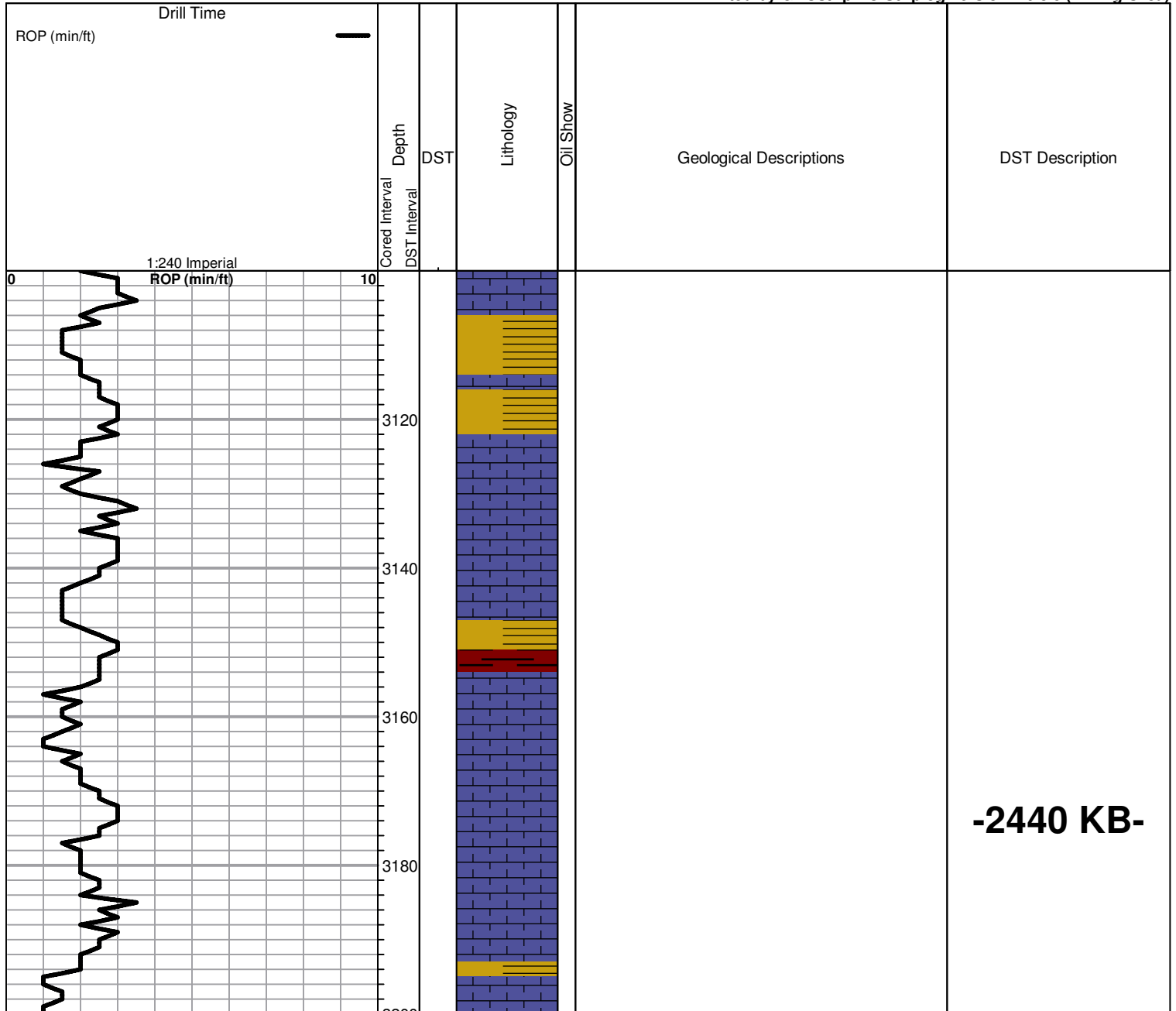
ROCK TYPES



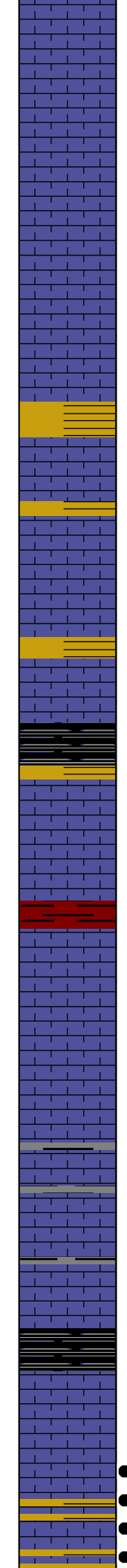
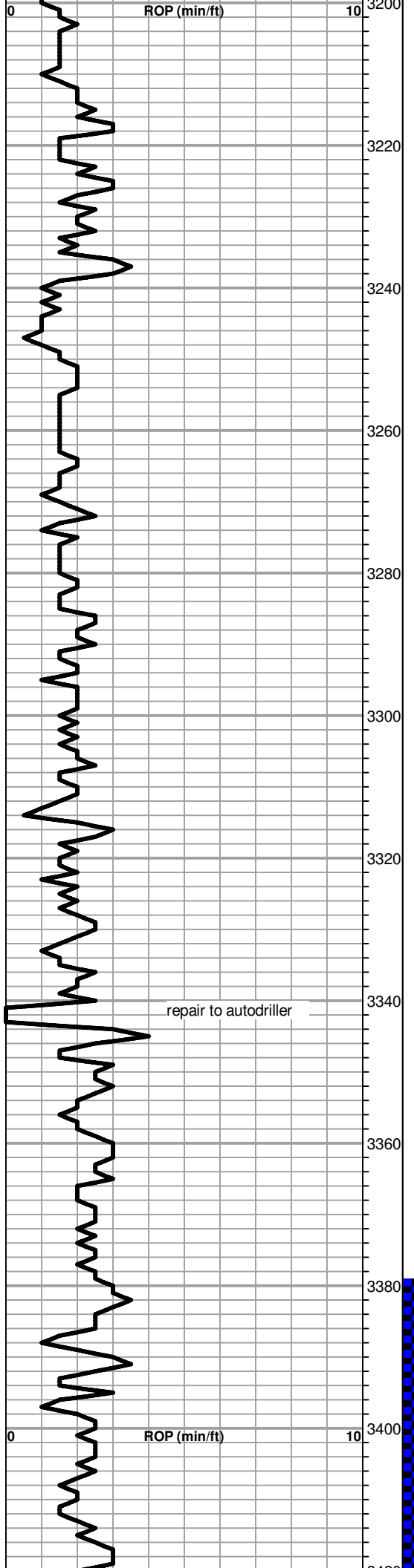
OTHER SYMBOLS



Printed by GEOstrip VC Striplog version 4.0.8.9 (www.grsi.ca)



-2440 KB-



Tr blk carb sh

Mar sh + tr wh/gry, chlky LS

LS: gry/wh, fxl, foss, chlky, nsfo

Mar red/green sh soft

repair to autodriller

LS; crm, fxl, chlky, + mar sh soft

LS: wh/gry,/crm, chlky + gry boney chert

aa

Heebner
 Sample 3384.0 (-944.0)
 Log 3383.0 (-943.0)
 Blk carb sh

Tr LS; wh/gry, chlky dense

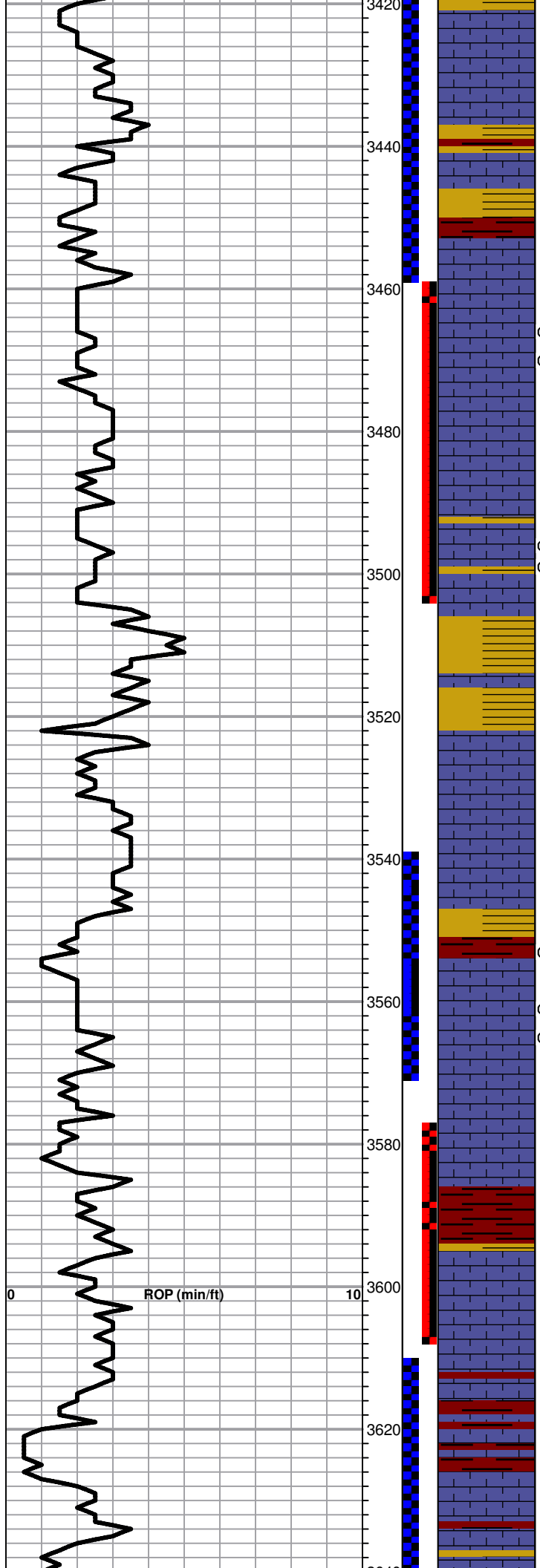
Toronto

- Sample 3412.0 (-972.0)
- Log 3412.0 (-972.0)
- LS; gry, who, highly foss, fr
- porosty, ft stn/ sat sfo ?? odor

DST #1 3380-3459
30-30-45-60

Blow: BOB 9 mins
 2nd: BOB 10 mins

Recovery:
 240' GIP
 120' GO (25%G, 75%O)
 437' GMCO (20%G, 25%O)



LS; gry; wh, fr - goo ixl ppt porosity, good stn, sfo?? odor

Lansing
 Sample 3425.0 (-985.0)
 Log 3426.0 (-986.0)

LS; gry; wh, highly ool, fr prosity, brn stn/sat sf sfo odor

Calcite cement in part, golden brn stn, tr sfo, odor??
 Golden brn stn, sfo

LS; wh/yellow, scatt ppt porosity, chlky, poor brn stn, tr sfo, odor??

Slug bar/brick red sh

aa

LS: wh/gry, highly ool, chlky, brn stn sfo,

Sh; gry, maroon soft

LS: crm, fxl, chlky poor vis porosity, nsfo

LS; crm, fxl, cherty, poor vis porosity, nsfo

LS' crm, fxl, foss, cherty, weak sfo, no odor

LS: crm, fxl, ft brn stn, sft sfo, no odor, scatt vis porosity

LS' crm, fxl, ft brn stn, very ft odor, sfo

LS; cr, fxl, foss, poor vis porosity, nsfo

Brick red/maroon sh

LS; crm, fxl, foss, ft sfo, no odor

LS; crm, fxl, poor vis porosity, ft sfo

Base Kansas City
 Sample 3613.0 (-1173.0)
 Log 3614.0 (-1174.0)

LS: crm, fxl, chlky, poor vis porosity

LS: crm, fxl, cherty in part poor vis porosity

437 GMCO (20%G, 25% M, 55%O)

Pressures:
 ISIP: 1167 psi
 FSIP: 1163 psi
 IFP: 17-118 psi
 FFP: 125-233 psi
 HSH: 1610-1594 psi

DST #2 3459-3504
30-30-30-45

Blow: no return
 2nd: no return

Recovery: 5' Mud

Pressures:
 ISIP: 37 psi
 FSIP: 39 psi
 IFP: 8-9 psi
 FFP: 9-10 psi
 HSH: 1658-1637 psi

DST #3 3540-3570
30-30-30-45

Blow: no return
 2nd: no return

Recovery: 5' Mud

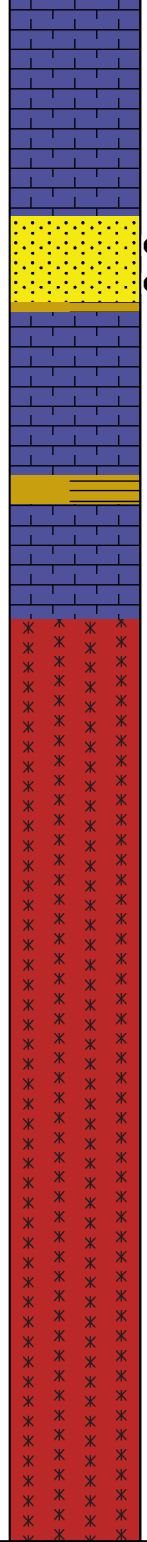
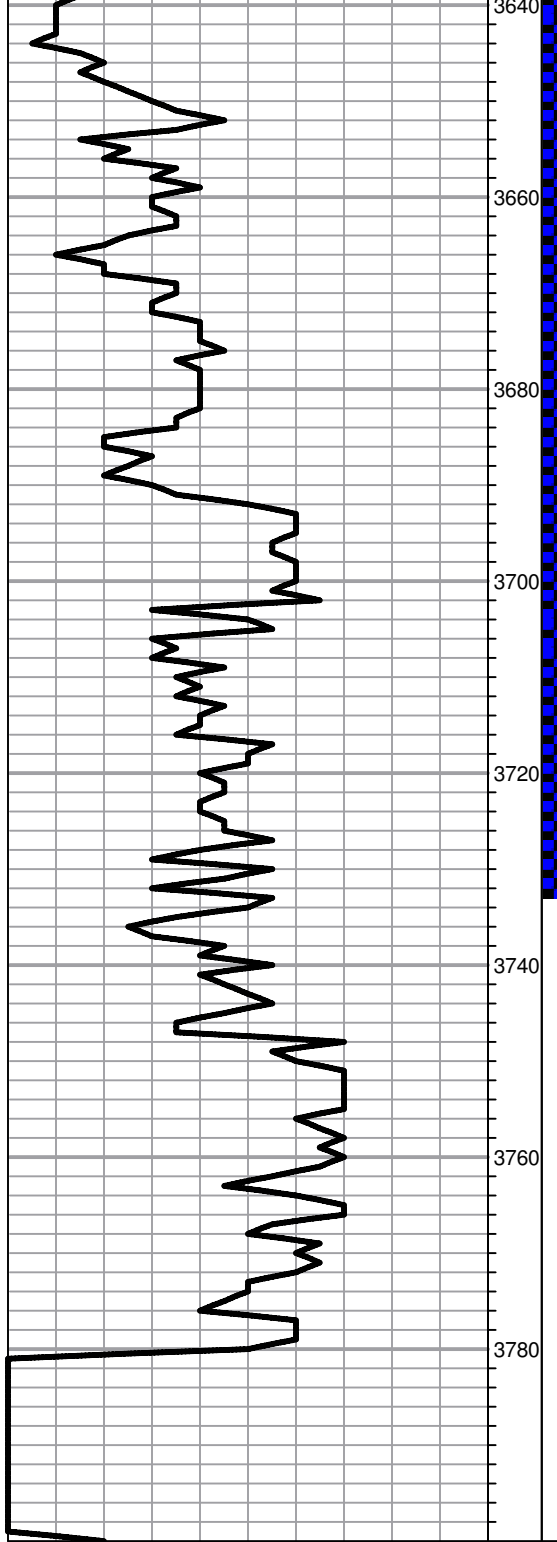
Pressures:
 ISIP: 47 psi
 FSIP: 39 psi
 IFP: 7-9 psi
 FFP: 8-9 psi
 HSH: 1699-1662 psi

DST #4 3578-3610
30-30-30-45

Blow: no return
 2nd: no return

Recovery: 5' Mud

Pressures:
 ISIP: 13 psi
 FSIP: 13 psi
 IFP: 8-8 psi
 FFP: 8-8 psi
 HSH: 1743-1709 psi



LS; crm, fxl, cherty, ft blk stn, poor vis porosity, nsfo

LS; crm, fxl, ool, ft brk stn, weak sfo

Basal Sand
 Sample 3668.0 (-1228.0)
 Log 3669.0 (-1229.0)

Sd, vfg, well sorted, good blk stn, sfo, no odor

LS: crm/tan, fxl, poor vis porosity, chlky, nsfo

LS; crm, fxl, cherty, ft blk stn, sfo, no odor, poor vis porosity

Granite
 Sample 3692.0 (-1252.0)
 Log 3692.0 (-1252.0)

Quartz-sub angular, pink and clear feldspars, mica, well cemented, poor vis porosity, nsfo

Clear qtz + blk/pink feldspars

AA + nsfo

Qtz + mica + feldspars nsfo, poor vis porosity

AA

RTD
 Sample 3780.0 (-1340.0)
 Log 2782.0 (-1342.0)

**DST #5 3610-3730
30-30-45-30**

Blow: BOB 9 mins
2nd: BOB 3 mins

Recovery: 2180' MCW
(10%M 90%W)

Pressures:
 ISIP: 1130 psi
 FSIP: 1180 psi
 IFP: 18-886 psi
 FFP: 925-1118 psi
 HSH: 1777-1748 psi