



**TRILOBITE TESTING, INC.**

# DRILL STEM TEST REPORT

Darrah Oil Company

**29-20s-13w Barton Co. Ks.**

P.O. Box 2786  
Wichita, Ks. 67201

**Gaunt 'A' 1-29**

Job Ticket: 57790

**DST#: 1**

ATTN: Seth Evenson

Test Start: 2014.11.03 @ 21:16:47

## GENERAL INFORMATION:

Formation: **Arbuckle**

Deviated: No Whipstock: ft (KB)

Time Tool Opened: 01:06:32

Time Test Ended: 05:55:02

Test Type: Conventional Bottom Hole (Initial)

Tester: Matt Smith

Unit No: 53

**Interval: 3551.00 ft (KB) To 3560.00 ft (KB) (TVD)**

Reference Elevations: 1895.00 ft (KB)

Total Depth: 3560.00 ft (KB) (TVD)

1890.00 ft (CF)

Hole Diameter: 7.88 inches Hole Condition: Fair

KB to GR/CF: 5.00 ft

## Serial #: 8931

Press @ RunDepth: 159.32 psig @ ft (KB)

Capacity: 8000.00 psig

Start Date: 2014.11.03

End Date: 2014.11.04

Last Calib.: 2014.11.04

Start Time: 21:16:52

End Time: 05:55:02

Time On Btm: 2014.11.04 @ 01:00:17

Time Off Btm: 2014.11.04 @ 03:39:17

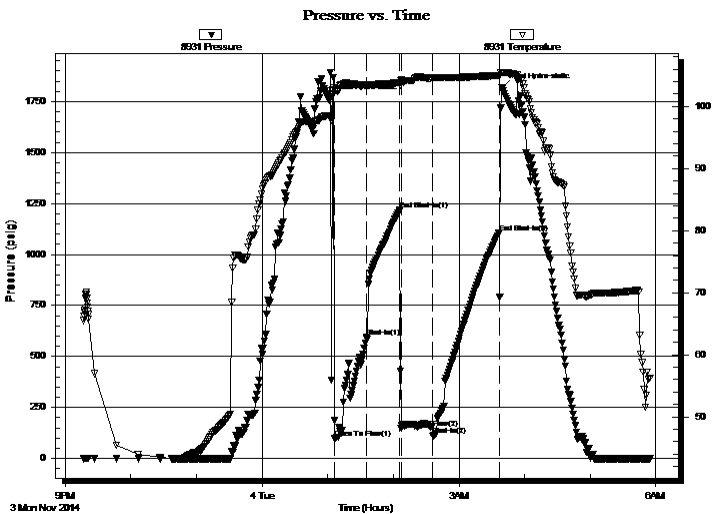
**TEST COMMENT:** IF: Fair blow . Decreasing back from 8 1/2", to 4 1/2".

IS: No blow .

FF: Weak blow . Surf., - 1 1/2". Dying back to 1/2" in 18 mins., to surf. blow .

FS: No blow .

## PRESSURE SUMMARY



Time (Min.)	Pressure (psig)	Temp (deg F)	Annotation
0	1765.45	98.49	Initial Hydro-static
7	100.27	102.69	Open To Flow (1)
36	596.93	103.52	Shut-In(1)
66	1220.14	103.83	End Shut-In(1)
67	146.67	104.11	Open To Flow (2)
96	159.32	104.64	Shut-In(2)
157	1105.70	105.00	End Shut-In(2)
159	1816.60	105.45	Final Hydro-static

## Recovery

Length (ft)	Description	Volume (bbl)
120.00	Drig mud 100%m	0.59
120.00	Drig mud 100%m	0.59
20.00	GWCM 1%g 2%w 97%m	0.21

## Gas Rates

Choke (inches)	Pressure (psig)	Gas Rate (Mcf/d)



**TRILOBITE  
TESTING, INC.**

# DRILL STEM TEST REPORT

**FLUID SUMMARY**

Darrah Oil Company

**29-20s-13w Barton Co. Ks.**

P.O. Box 2786  
Wichita, Ks. 67201

**Gaunt 'A' 1-29**

Job Ticket: 57790

**DST#: 1**

ATTN: Seth Evenson

Test Start: 2014.11.03 @ 21:16:47

## Mud and Cushion Information

Mud Type: Gel Chem

Cushion Type:

Oil API:

deg API

Mud Weight: 9.00 lb/gal

Cushion Length:

ft

Water Salinity:

3000 ppm

Viscosity: 57.00 sec/qt

Cushion Volume:

bbbl

Water Loss: 7.97 in<sup>3</sup>

Gas Cushion Type:

Resistivity: ohm.m

Gas Cushion Pressure:

psig

Salinity: 3000.00 ppm

Filter Cake: 0.20 inches

## Recovery Information

Recovery Table

Length ft	Description	Volume bbbl
120.00	Drig mud 100%m	0.590
120.00	Drig mud 100%m	0.590
20.00	GWCM 1%g 2%w 97%m	0.208

Total Length: 260.00 ft

Total Volume: 1.388 bbl

Num Fluid Samples: 0

Num Gas Bombs: 0

Serial #: none

Laboratory Name:

Laboratory Location:

Recovery Comments:

