



**TRILOBITE TESTING, INC**

# DRILL STEM TEST REPORT

Darrah Oil Company

**29-20s-13w Barton Co. Ks.**

P.O. Box 2786  
Wichita, Ks. 67201

**Gaunt 'A' 1-29**

Job Ticket: 57792

**DST#: 3**

ATTN: Seth Evenson

Test Start: 2014.11.04 @ 19:32:35

## GENERAL INFORMATION:

Formation: **Arbuckle**

Deviated: No Whipstock: ft (KB)

Time Tool Opened: 21:58:35

Time Test Ended: 02:52:50

Test Type: Conventional Straddle (Reset)

Tester: Matt Smith

Unit No: 53

**Interval: 3363.00 ft (KB) To 3455.00 ft (KB) (TVD)**

Reference Elevations: 1895.00 ft (KB)

Total Depth: 3565.00 ft (KB) (TVD)

1890.00 ft (CF)

Hole Diameter: 7.88 inches Hole Condition: Fair

KB to GR/CF: 5.00 ft

**Serial #: 8931 Outside**

Press@RunDepth: 25.07 psig @ 3364.00 ft (KB)

Capacity: 8000.00 psig

Start Date: 2014.11.04 End Date: 2014.11.05

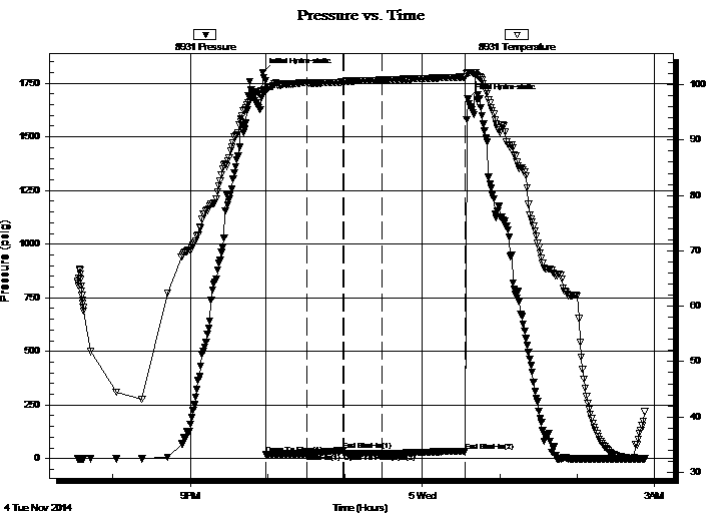
Last Calib.: 2014.11.05

Start Time: 19:32:40 End Time: 02:52:49

Time On Btm: 2014.11.04 @ 21:56:05

Time Off Btm: 2014.11.05 @ 00:35:05

**TEST COMMENT:** IF: Weak blow . Surf., - 1". Died back to 1/2".  
IS: No blow .  
FF: Weak blow . Surf., - 1/2".  
FS: No blow .



## PRESSURE SUMMARY

Time (Min.)	Pressure (psig)	Temp (deg F)	Annotation
0	1800.54	98.97	Initial Hydro-static
3	19.02	98.75	Open To Flow (1)
35	23.74	100.33	Shut-In(1)
62	36.59	100.46	End Shut-In(1)
63	24.22	100.50	Open To Flow (2)
93	25.07	100.82	Shut-In(2)
157	35.37	101.39	End Shut-In(2)
159	1676.41	102.11	Final Hydro-static

## Recovery

Length (ft)	Description	Volume (bbl)
10.00	WCM 2%w 98%m	0.05

\* Recovery from multiple tests

## Gas Rates

Choke (inches)	Pressure (psig)	Gas Rate (Mcf/d)



**TRILOBITE  
TESTING, INC**

# DRILL STEM TEST REPORT

Darrah Oil Company

**29-20s-13w Barton Co. Ks.**

P.O. Box 2786  
Wichita, Ks. 67201

**Gaunt 'A' 1-29**

Job Ticket: 57792

**DST#: 3**

ATTN: Seth Evenson

Test Start: 2014.11.04 @ 19:32:35

## GENERAL INFORMATION:

Formation: **Arbuckle**

Deviated: No Whipstock: ft (KB)

Time Tool Opened: 21:58:35

Time Test Ended: 02:52:50

Test Type: Conventional Straddle (Reset)

Tester: Matt Smith

Unit No: 53

**Interval: 3363.00 ft (KB) To 3455.00 ft (KB) (TVD)**

Reference Elevations: 1895.00 ft (KB)

Total Depth: 3565.00 ft (KB) (TVD)

1890.00 ft (CF)

Hole Diameter: 7.88 inches Hole Condition: Fair

KB to GR/CF: 5.00 ft

**Serial #: 8676 Below (Straddle)**

Press@RunDepth: psig @ 3457.00 ft (KB)

Capacity: 8000.00 psig

Start Date: 2014.11.04

End Date:

2014.11.05

Last Calib.:

2014.11.05

Start Time: 19:33:01

End Time:

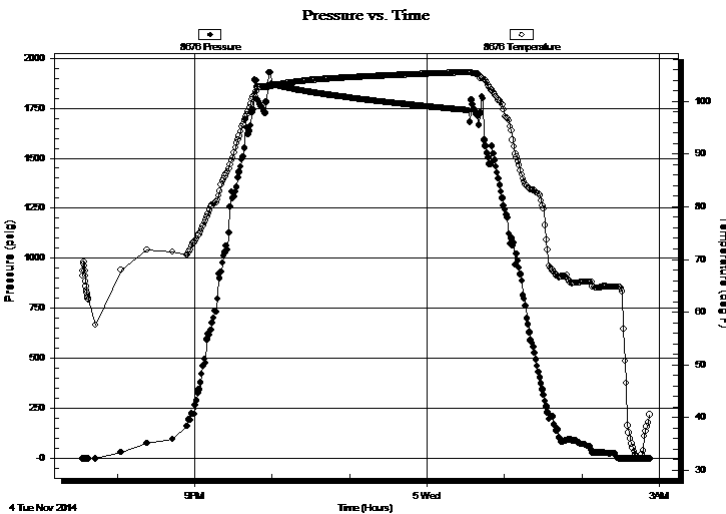
02:52:25

Time On Btm:

Time Off Btm:

**TEST COMMENT:** IF: Weak blow . Surf., - 1". Died back to 1/2".  
IS: No blow .  
FF: Weak blow . Surf., - 1/2".  
FS: No blow .

## PRESSURE SUMMARY



Time (Min.)	Pressure (psig)	Temp (deg F)	Annotation

## Recovery

Length (ft)	Description	Volume (bbl)
10.00	WCM 2%w 98%m	0.05

\* Recovery from multiple tests

## Gas Rates

Choke (inches)	Pressure (psig)	Gas Rate (Mcf/d)



**TRILOBITE  
TESTING, INC**

# DRILL STEM TEST REPORT

## FLUID SUMMARY

Darrah Oil Company

**29-20s-13w Barton Co. Ks.**

P.O. Box 2786  
Wichita, Ks. 67201

**Gaunt 'A' 1-29**

Job Ticket: 57792

**DST#: 3**

ATTN: Seth Evenson

Test Start: 2014.11.04 @ 19:32:35

### Mud and Cushion Information

Mud Type: Gel Chem

Cushion Type:

Oil API:

deg API

Mud Weight: 9.00 lb/gal

Cushion Length:

ft

Water Salinity:

4500 ppm

Viscosity: 55.00 sec/qt

Cushion Volume:

bbbl

Water Loss: 9.39 in<sup>3</sup>

Gas Cushion Type:

Resistivity: ohm.m

Gas Cushion Pressure:

psig

Salinity: 4500.00 ppm

Filter Cake: 0.20 inches

### Recovery Information

Recovery Table

Length ft	Description	Volume bbl
10.00	WCM 2%w 98%m	0.049

Total Length: 10.00 ft      Total Volume: 0.049 bbl

Num Fluid Samples: 0

Num Gas Bombs: 0

Serial #: none

Laboratory Name:

Laboratory Location:

Recovery Comments:

