



**TRILOBITE  
TESTING, INC**

# DRILL STEM TEST REPORT

Darrah Oil Company

**29-20s-13w Barton Co. Ks.**

P.O. Box 2786  
Wichita, Ks. 67201

**Gaunt 'A' 1-29**

Job Ticket: 61883

**DST#: 4**

ATTN: Seth Evenson

Test Start: 2014.11.05 @ 21:25:00

## GENERAL INFORMATION:

Formation: **Arbuckle**

Deviated: No Whipstock: ft (KB)

Time Tool Opened: 23:11:30

Time Test Ended: 04:41:00

Test Type: Conventional Bottom Hole (Initial)

Tester: Jared Scheck

Unit No: S5-Great Bend-15

**Interval: 3555.00 ft (KB) To 3665.00 ft (KB) (TVD)**

Reference Elevations: 1895.00 ft (KB)

Total Depth: 3665.00 ft (KB) (TVD)

1890.00 ft (CF)

Hole Diameter: 7.88 inches Hole Condition: Fair

KB to GR/CF: 5.00 ft

**Serial #: 8525 Inside**

Press@RunDepth: 451.33 psig @ 3661.00 ft (KB)

Capacity: 5000.00 psig

Start Date: 2014.11.05 End Date: 2014.11.06

Last Calib.: 2014.11.06

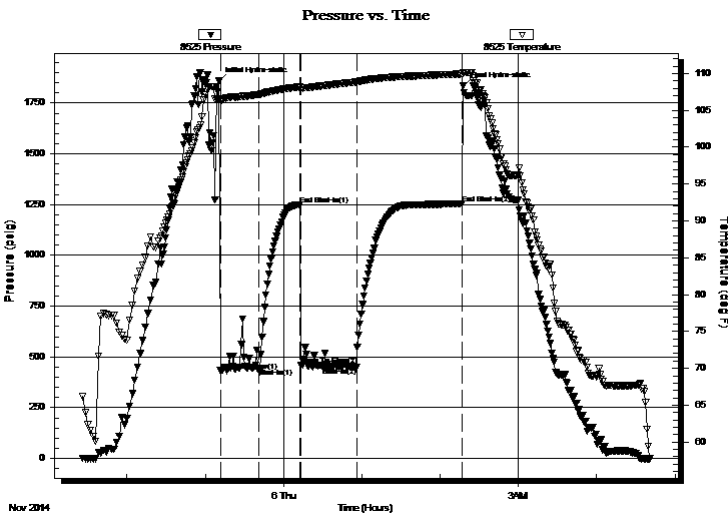
Start Time: 21:26:00 End Time: 04:41:00

Time On Btm: 2014.11.05 @ 23:10:30

Time Off Btm: 2014.11.06 @ 02:17:30

**TEST COMMENT:** IFP-30 Minutes-Weak blow built 7 inches into bucket w ater  
ISIP-30 Minutes-No blow back  
FFP- 45 Minutes-Weak blow built 2 inches into w ater  
FSIP- 75 Minutes-No blow back

## PRESSURE SUMMARY



Time (Min.)	Pressure (psig)	Temp (deg F)	Annotation
0	1858.25	106.60	Initial Hydro-static
1	432.38	106.27	Open To Flow (1)
31	444.35	107.16	Shut-In(1)
63	1250.97	108.18	End Shut-In(1)
63	458.97	108.02	Open To Flow (2)
106	451.33	108.85	Shut-In(2)
186	1252.88	109.93	End Shut-In(2)
187	1833.77	110.07	Final Hydro-static

## Recovery

Length (ft)	Description	Volume (bbl)
720.00	mud	7.91

## Gas Rates

Choke (inches)	Pressure (psig)	Gas Rate (Mcf/d)



**TRILOBITE  
TESTING, INC**

# DRILL STEM TEST REPORT

## FLUID SUMMARY

Darrah Oil Company

**29-20s-13w Barton Co. Ks.**

P.O. Box 2786  
Wichita, Ks. 67201

**Gaunt 'A' 1-29**

Job Ticket: 61883

**DST#: 4**

ATTN: Seth Evenson

Test Start: 2014.11.05 @ 21:25:00

### Mud and Cushion Information

Mud Type: Gel Chem

Cushion Type:

Oil API:

deg API

Mud Weight: 9.00 lb/gal

Cushion Length:

ft

Water Salinity:

ppm

Viscosity: 55.00 sec/qt

Cushion Volume:

bbbl

Water Loss: 9.38 in<sup>3</sup>

Gas Cushion Type:

Resistivity: ohm.m

Gas Cushion Pressure:

psig

Salinity: 4500.00 ppm

Filter Cake: 2.00 inches

### Recovery Information

Recovery Table

Length ft	Description	Volume bbl
720.00	mud	7.913

Total Length: 720.00 ft

Total Volume: 7.913 bbl

Num Fluid Samples: 0

Num Gas Bombs: 0

Serial #:

Laboratory Name:

Laboratory Location:

Recovery Comments:

