



Office (620) 588-4250 212 Main St. • P.O. Box 215 • Clarifin, KS 67525 Home (620) 587-3444
 James C. Musgrove
 Petroleum Geologist

GEOLOGIST'S REPORT

DRILLING TIME AND SAMPLE LOG

COMPANY Blueridge Petroleum Corp. ELEVATIONS
 LEASE Norman #1-1 KB 2955
 FIELD Wildcat DF _____
 LOCATION SE-SE-NW-1/4 (1284' FUL 1279' F.W.L.) GL 2950
 SEC 11 TWP 45 RGE 32 W Measurements Are All From KB
 COUNTY Rawlins STATE Kansas
 CONTRACTOR LD Drilling Co. (rig #1) CASING 267'
 SPUD 11/8/2014 COMP 11/17/2014 SURFACE PRODUCTION 5 1/2" @ 4539'
 RTD 4540 LTD 4520 ELECTRICAL SURVEYS By Nabors, D.D., C.D./M.P.E., M.D.S., S.A.C.
 MUD UP 2400 TYPE MUD chemical displaced

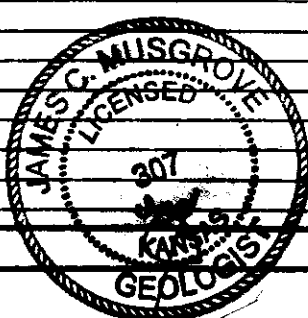
SAMPLES SAVED FROM 3500 TO _____
 DRILLING TIME KEPT FROM 3500 TO _____ RTD
 SAMPLES EXAMINED FROM 3600 TO _____
 GEOLOGICAL SUPERVISION FROM 3600 TO _____
 GEOLOGIST ON WELL Jim Musgrove

FORMATION TOPS	LOG	SAMPLES
Anhydrite	2686 +269	RTD 4540 -1505
Base Anhydrite	2730	LTD 4520 -1566
Hebner	2871 -916	
Tornato	3205 -950	
Manstog	3913 -958	
Base Kansas Clay	4454 -1199	
Powmpe	4264 -1309	
Fort Scott	4291 -836	
Cherokee Sh.	4321 -1366	
Best Sand	4447 -1492	
Mississippi	4491 -1532	


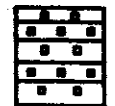




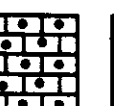


REMARKS

5 1/2" production casing was set & cemented in Blueridge petroleum Corp Norman #1-1

Respectfully submitted,
 James C. Musgrove
 Petroleum Geologist



LEGEND

-  Anhydrite
-  Salt
-  Sandstone
-  Shale
-  Carb sh
-  Limestone
-  Ool. Lime
-  Chert
-  Dolomite

LOG	DRILLING TIME
-----	---------------

LITHOLOG

DEPTH

Logarithmic Scale)

5 1 2 3 4 5 10 15 20 30

SAMPLE DESCRIPTIONS

REMARKS

20

40

60

80

3600

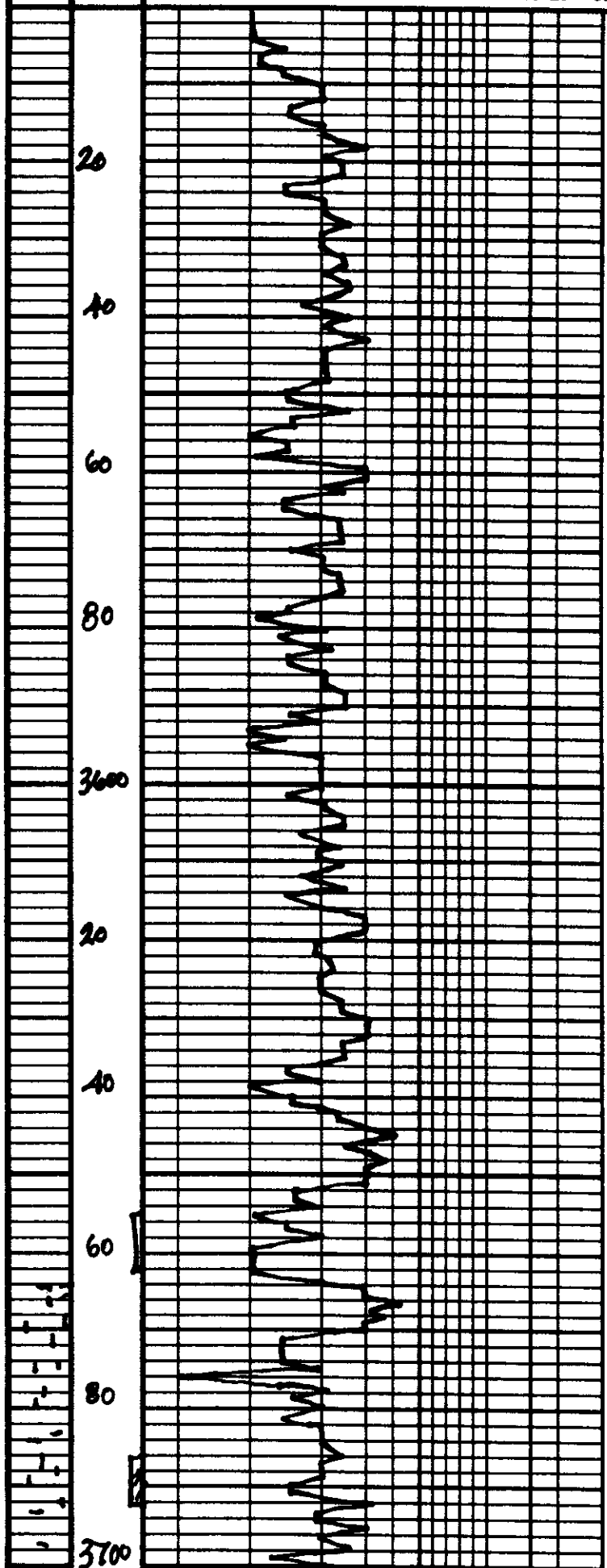
20

40

60

80

3700



3
7

poor samples
(water source)
100% red beds
& rephile samples

3913

ls, wh/gay; soft blk, c. wh; 2' sh, 5' fo; 177' adn

Dst (300 bbls)

40

ms, wh/gay sh.

60

ls, wh/crm, fcs, weak. p. 2' sh, 5' fo, 177' adn brown sta/526, 520, 524, 528.

(lost circ.)

80

ls, wh/gay, slightly foss, 5' sh brown sta, 175' adn, no adn

Dst # 2
3930-3974

30-30-45-45
Blow, weak (1")
2nd : no blow
opening
Rec; 4' oil specked
mud
(2700lb; 2870 mud)

1000

2' blk carb. sh.

gm/wh/gray/brnky brown sh

Pressure 1510 147

20

ls, wh/gay, slightly foss, c. wh, 175' adn, 175' sh

5: D124
Exp 10-11
(invalid) - 12-12/17
1812-1816

40

gm/blk sh.

60

ls, wh/gay; foss, for fossil
c. wh, 175' sh, 175' adn, no adn.

80

v.l. soft gray sh

100

ls, wh/gay; c. wh, c. wh
p. 2' sh, 5' fo, 177' adn

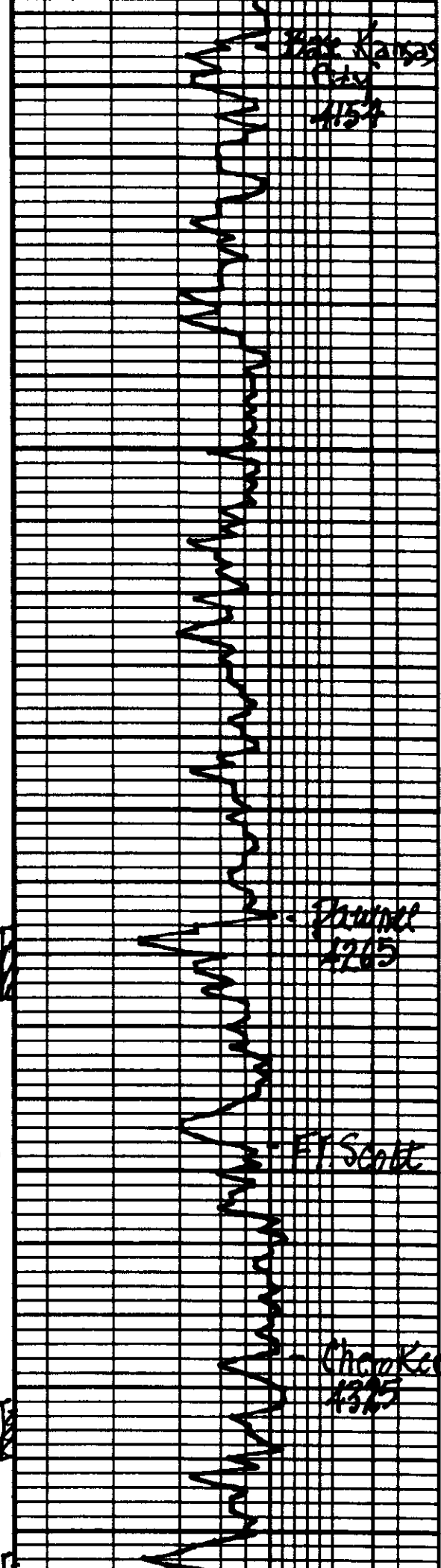
brnky red/red; soft sh

20

ls, wh/gay, fcs, foss
in pale c. wh (d. sh)

10

40
60
80
1200
20
40
60
80
1200
20
40



Base Kansas City 1154

Shaly vs. soft silty sh.

grey cherty ls. / purple sh grey sh.

32

ls. sh. & c.

32

silty purple sh / grey mar. sh.

32

ls. grey / mar. cherty & sh. & c.

32

Shinarump 1265

ls. tan, fine gr. cherty / dense, poor vis. sh.

32

ls. grey / mar. sh.

FT. Scott

ls. grey / mar. sh. / cherty / few shaly, poor vis. sh.

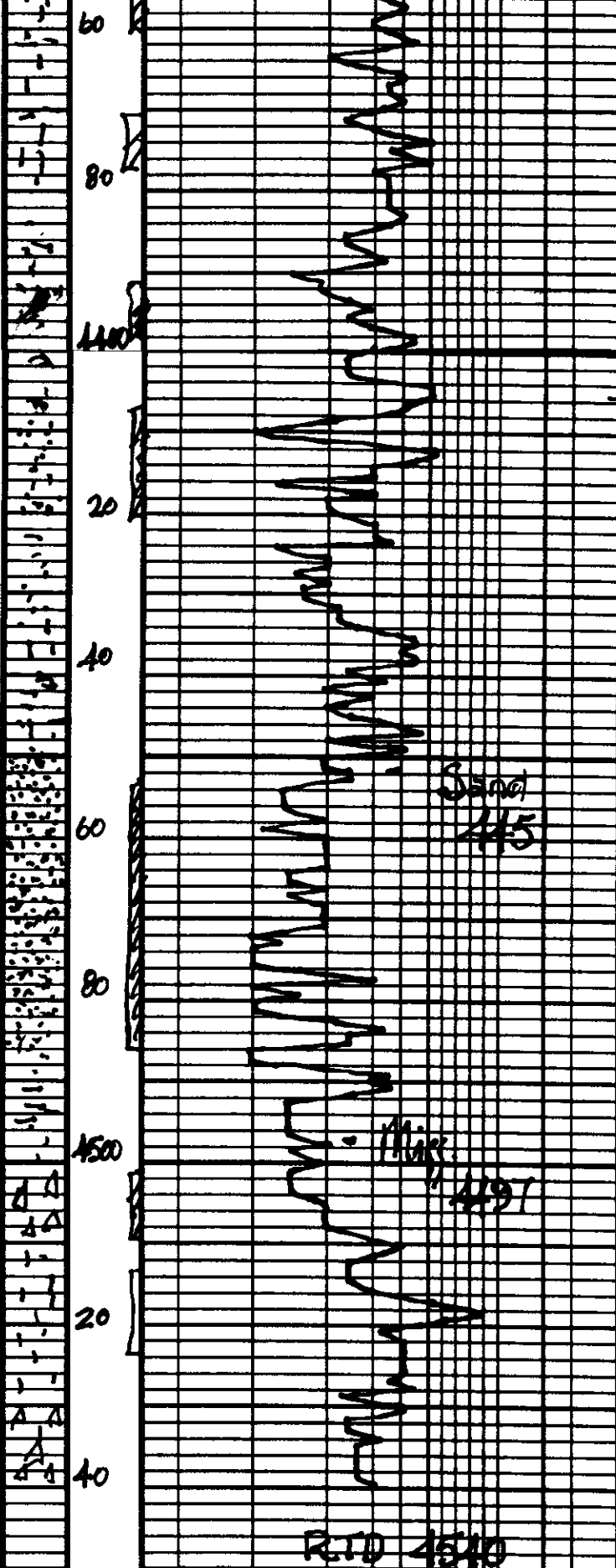
32

Cherokee 1325

gr. blk. calc. sh.

ls. tan / grey, cherty = dense

red / mar. calc. sh.



LC
L3/S sh ss

LC

Sd; gray, red greenish, fine
?1 dry/brown sh, 25% ss below

a. bright mag
purple sh
sub. white sh

Sand; wh coarse
grains; sub rounded;
fine ss

+ orange wh d

LC

Sd; wh/red/yellow;
V.S. sub rounded, fine
Ir. glauc. ss

LC

+ base uncom. qtz grains

abundant base uncom.
sub rounded qtz grains
(fossil)

gr. red/purple sub
white sh

d; wh/yellow orange, brown
(foss) few foss; Ir. glauc.

LS; wh/gray; FRL; few foss;
cherty + wh chert

LC

LS; d. am. ss
+ f. ss