



# TEMPORARY ABANDONMENT WELL APPLICATION

OPERATOR: License# \_\_\_\_\_  
 Name: \_\_\_\_\_  
 Address 1: \_\_\_\_\_  
 Address 2: \_\_\_\_\_  
 City: \_\_\_\_\_ State: \_\_\_\_\_ Zip: \_\_\_\_\_ + \_\_\_\_\_  
 Contact Person: \_\_\_\_\_  
 Phone: (\_\_\_\_) \_\_\_\_\_  
 Contact Person Email: \_\_\_\_\_  
 Field Contact Person: \_\_\_\_\_  
 Field Contact Person Phone: (\_\_\_\_) \_\_\_\_\_

API No. 15- \_\_\_\_\_  
 Spot Description: \_\_\_\_\_  
 \_\_\_\_\_ - \_\_\_\_\_ - \_\_\_\_\_ - \_\_\_\_\_ Sec. \_\_\_\_\_ Twp. \_\_\_\_\_ S. R. \_\_\_\_\_  E  W  
 \_\_\_\_\_ feet from  N /  S Line of Section  
 \_\_\_\_\_ feet from  E /  W Line of Section  
 GPS Location: Lat: \_\_\_\_\_, Long: \_\_\_\_\_  
(e.g. xx.xxxxx) (e.g. -xxx.xxxxx)  
 Datum:  NAD27  NAD83  WGS84  
 County: \_\_\_\_\_ Elevation: \_\_\_\_\_  GL  KB  
 Lease Name: \_\_\_\_\_ Well #: \_\_\_\_\_  
 Well Type: (check one)  Oil  Gas  OG  WSW  Other: \_\_\_\_\_  
 SWD Permit #: \_\_\_\_\_  ENHR Permit #: \_\_\_\_\_  
 Gas Storage Permit #: \_\_\_\_\_  
 Spud Date: \_\_\_\_\_ Date Shut-In: \_\_\_\_\_

	Conductor	Surface	Production	Intermediate	Liner	Tubing
Size						
Setting Depth						
Amount of Cement						
Top of Cement						
Bottom of Cement						

Casing Fluid Level from Surface: \_\_\_\_\_ How Determined? \_\_\_\_\_ Date: \_\_\_\_\_

Casing Squeeze(s): \_\_\_\_\_ to \_\_\_\_\_ w / \_\_\_\_\_ sacks of cement, \_\_\_\_\_ to \_\_\_\_\_ w / \_\_\_\_\_ sacks of cement. Date: \_\_\_\_\_  
(top) (bottom) (top) (bottom)

Do you have a valid Oil & Gas Lease?  Yes  No

Depth and Type:  Junk in Hole at \_\_\_\_\_  Tools in Hole at \_\_\_\_\_ Casing Leaks:  Yes  No Depth of casing leak(s): \_\_\_\_\_  
(depth) (depth)

Type Completion:  ALT. I  ALT. II Depth of:  DV Tool: \_\_\_\_\_ w / \_\_\_\_\_ sacks of cement  Port Collar: \_\_\_\_\_ w / \_\_\_\_\_ sack of cement  
(depth) (depth)

Packer Type: \_\_\_\_\_ Size: \_\_\_\_\_ Inch Set at: \_\_\_\_\_ Feet

Total Depth: \_\_\_\_\_ Plug Back Depth: \_\_\_\_\_ Plug Back Method: \_\_\_\_\_

**Geological Data:**

Formation Name	Formation Top	Formation Base	Completion Information
1. _____	At: _____	to _____ Feet	Perforation Interval _____ to _____ Feet or Open Hole Interval _____ to _____ Feet
2. _____	At: _____	to _____ Feet	Perforation Interval _____ to _____ Feet or Open Hole Interval _____ to _____ Feet

~~UNDER PENALTY OF PERJURY I HEREBY ATTEST THAT THE INFORMATION CONTAINED HEREIN IS TRUE AND CORRECT TO THE BEST OF MY KNOWLEDGE~~

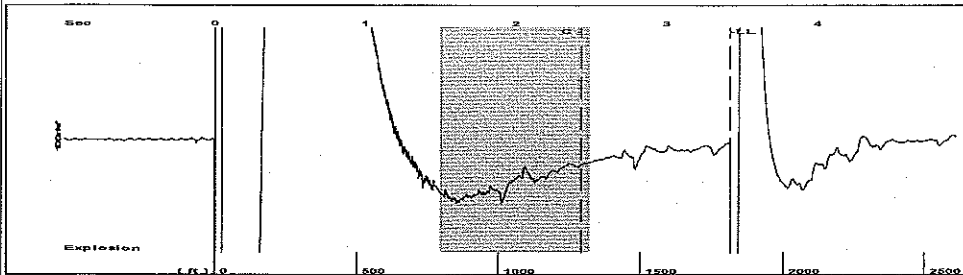
Submitted Electronically

<b>Do NOT Write in This Space - KCC USE ONLY</b>	Date Tested: _____	Results: _____	Date Plugged: _____	Date Repaired: _____	Date Put Back in Service: _____
	Review Completed by: _____ Comments: _____				
TA Approved: <input type="checkbox"/> Yes <input type="checkbox"/> Denied Date: _____					

**Mail to the Appropriate KCC Conservation Office:**

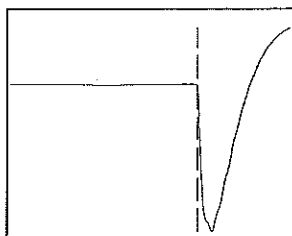
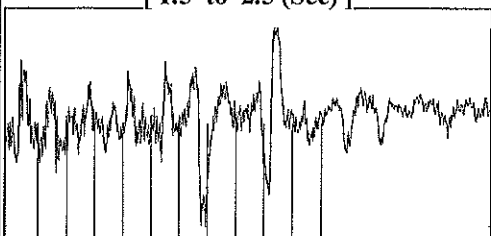
	KCC District Office #1 - 210 E. Frontview, Suite A, Dodge City, KS 67801	Phone 620.225.8888
	KCC District Office #2 / UPGS - 3450 N. Rock Road, Building 600, Suite 601, Wichita, KS 67226	Phone 316.630.4000
	KCC District Office #3 - 1500 SW Seventh Steet, Chanute, KS 66720	Phone 620.432.2300
	KCC District Office #4 - 2301 E. 13th Street, Hays, KS 67601-2651	Phone 785.625.0550

Group: MyWells Well: Heskamp 2-23 (acquired on: 10/16/14 11:57:52 )



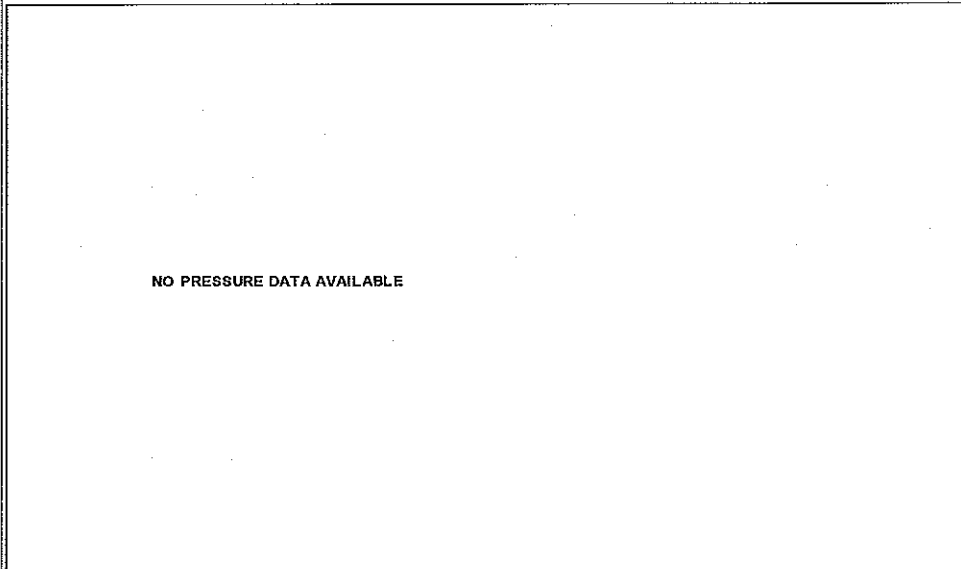
Filter Type High Pass Automatic Collar Count Yes Time 3.419 sec  
 Manual Acoustic Velocity 1087.48 ft/s Manual JTS/sec 17.1527 Joints 57.2077 Jts  
 Depth 1813.48 ft

[ 1.5 to 2.5 (Sec) ]



Analysis Method: Automatic

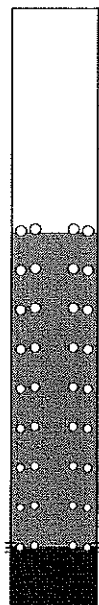
Group: MyWells Well: Heskamp 2-23 (acquired on: 10/16/14 11:57:52 )



Change in Pressure 227.32 psi NONE  
 Range 0 - ? psi  
 Change in Time 0.50 min

Group: MyWells Well: Heskamp 2-23 (acquired on: 10/16/14 11:57:52 )

Production	Potential	Casing Pressure
Current		
Oil - * -	- * - BBL/D	6094.2 psi (g)
Water - * -	- * - BBL/D	Casing Pressure Buildup
Gas - * -	- * - Mscf/D	227.3 psi
		0.50 min
IPR Method	Vogel	Gas/Liquid Interface Pressure
PBHP/SBHP	- * -	6346.8 psi (g)
Production Efficiency	0.0	
Oil 40 deg.API		Liquid Level Depth
Water 1.05 Sp.Gr.H2O		1813.48 ft
Gas 0.70 Sp.Gr.AIR		Pump Intake Depth
		5279.00 ft
Acoustic Velocity	1060.83 ft/s	Formation Depth
		5279.00 ft



Producing

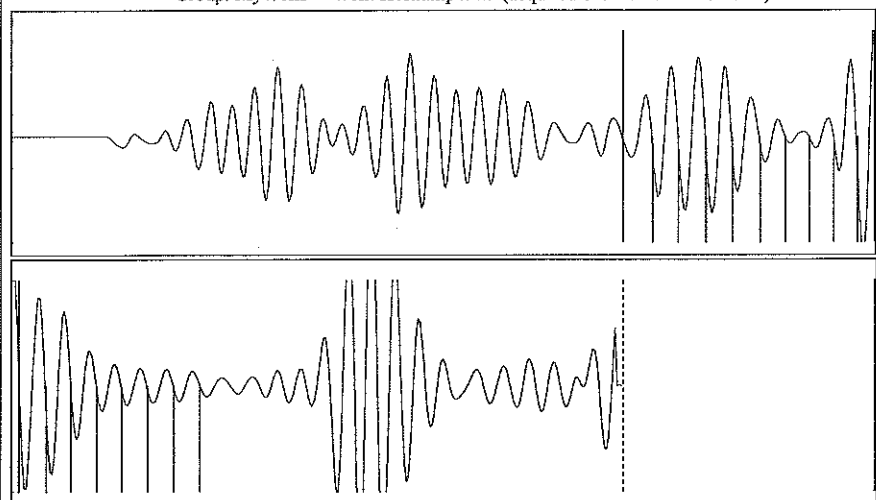
Annular Gas Flow	
24328 Mscf/D	
% Liquid	19 %
Pump Intake	7012.7 psi (g)
Producing BHP	7012.7 psi (g)
Static BHP	- * - psi (g)

Formation Submergence

Total Gaseous Liquid Column HT (TVD)	3466 ft
Equivalent Gas Free Liquid HT (TVD)	648 ft

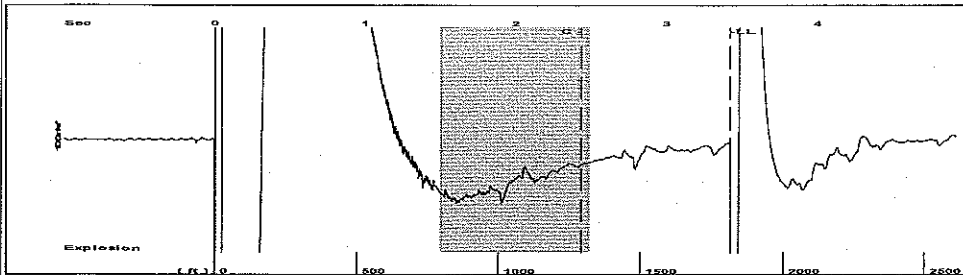
Acoustic Test

Group: MyWells Well: Heskamp 2-23 (acquired on: 10/16/14 11:57:52 )



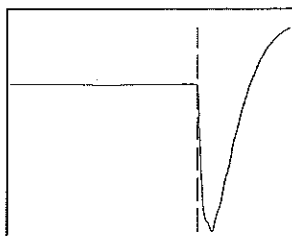
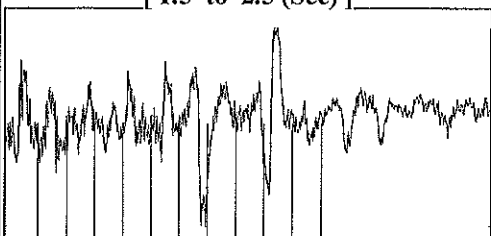
Acoustic Velocity	1060.83 ft/s	Joints counted	17
Joints Per Second	16.7323 jts/sec	Joints to liquid level	57.2077
Depth to liquid level	1813.48 ft	Filter Width	15.1527 19.1527
Automatic Collar Count	Yes	Time to 1st Collar	1.416 2.432

Group: MyWells Well: Heskamp 2-23 (acquired on: 10/16/14 11:57:52 )



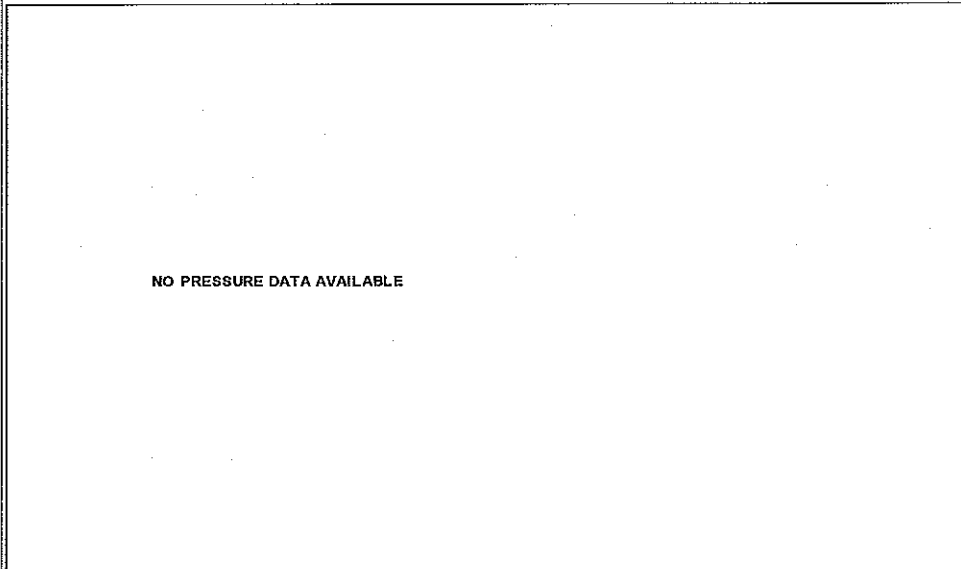
Filter Type High Pass Automatic Collar Count Yes Time 3.419 sec  
 Manual Acoustic Velocity 1087.48 ft/s Manual JTS/sec 17.1527 Joints 57.2077 Jts  
 Depth 1813.48 ft

[ 1.5 to 2.5 (Sec) ]



Analysis Method: Automatic

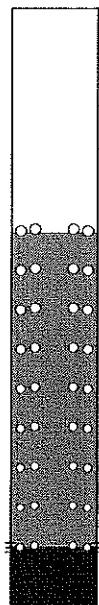
Group: MyWells Well: Heskamp 2-23 (acquired on: 10/16/14 11:57:52 )



Change in Pressure 227.32 psi NONE  
 Range 0 - ? psi  
 Change in Time 0.50 min

Group: MyWells Well: Heskamp 2-23 (acquired on: 10/16/14 11:57:52 )

Production	Potential	Casing Pressure
Current		
Oil - * -	- * - BBL/D	6094.2 psi (g)
Water - * -	- * - BBL/D	Casing Pressure Buildup
Gas - * -	- * - Mscf/D	227.3 psi
		0.50 min
IPR Method	Vogel	Gas/Liquid Interface Pressure
PBHP/SBHP	- * -	6346.8 psi (g)
Production Efficiency	0.0	
Oil 40 deg.API		Liquid Level Depth
Water 1.05 Sp.Gr.H2O		1813.48 ft
Gas 0.70 Sp.Gr.AIR		Pump Intake Depth
		5279.00 ft
Acoustic Velocity	1060.83 ft/s	Formation Depth
		5279.00 ft



Producing

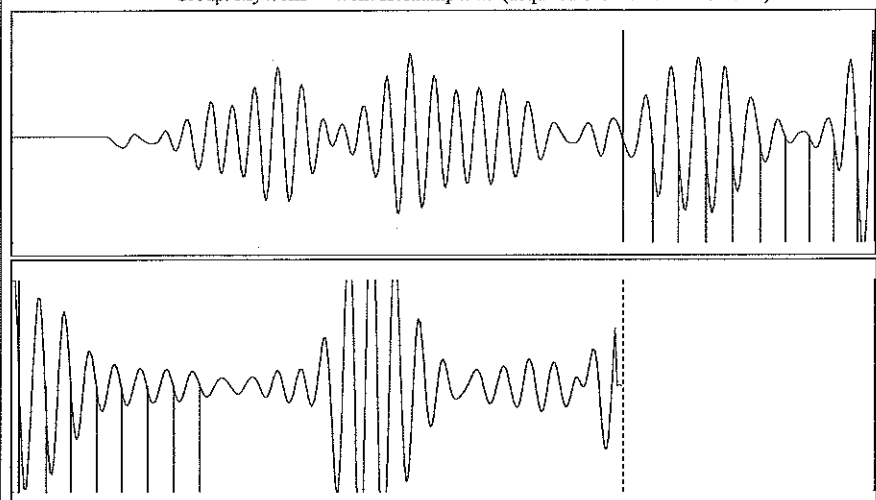
Annular Gas Flow	
24328 Mscf/D	
% Liquid	19 %
Pump Intake	7012.7 psi (g)
Producing BHP	7012.7 psi (g)
Static BHP	- * - psi (g)

Formation Submergence

Total Gaseous Liquid Column HT (TVD)	3466 ft
Equivalent Gas Free Liquid HT (TVD)	648 ft

Acoustic Test

Group: MyWells Well: Heskamp 2-23 (acquired on: 10/16/14 11:57:52 )



Acoustic Velocity	1060.83 ft/s	Joints counted	17
Joints Per Second	16.7323 jts/sec	Joints to liquid level	57.2077
Depth to liquid level	1813.48 ft	Filter Width	15.1527 19.1527
Automatic Collar Count	Yes	Time to 1st Collar	1.416 2.432

Conservation Division  
District Office No. 1  
210 E. Frontview, Suite A  
Dodge City, KS 67801



Phone: 620-225-8888  
Fax: 620-225-8885  
<http://kcc.ks.gov/>

Shari Feist Albrecht, Chair  
Jay Scott Emler, Commissioner  
Pat Apple, Commissioner

Sam Brownback, Governor

December 16, 2014

Katie Wright  
Chesapeake Operating, Inc.  
6100 N WESTERN AVE  
PO BOX 18496  
OKLAHOMA CITY, OK 73154-0496

Re: Temporary Abandonment  
API 15-081-21568-00-00  
HESKAMP 2-23  
SW/4 Sec.23-29S-32W  
Haskell County, Kansas

Dear Katie Wright:

"Your temporary abandonment (TA) application for the well listed above has been approved. In accordance with K.A.R. 82-3-111 the TA status of this well will expire 12/16/2015.

- \* If you return this well to service or plug it, please notify the District Office.
- \* If you sell this well you are required to file a Transfer of Operator form, T-1.
- \* If the well will remain temporarily abandoned, you must submit a new TA application, CP-111, before 12/16/2015.

You may contact me at the number above if you have questions.

Very truly yours,

Michael Maier"