



TEMPORARY ABANDONMENT WELL APPLICATION

OPERATOR: License# _____
 Name: _____
 Address 1: _____
 Address 2: _____
 City: _____ State: _____ Zip: _____ + _____
 Contact Person: _____
 Phone: (_____) _____
 Contact Person Email: _____
 Field Contact Person: _____
 Field Contact Person Phone: (_____) _____

API No. 15- _____
 Spot Description: _____
 _____ - _____ - _____ - _____ Sec. _____ Twp. _____ S. R. _____ E W
 _____ feet from N / S Line of Section
 _____ feet from E / W Line of Section
 GPS Location: Lat: _____, Long: _____
(e.g. xx.xxxxx) (e.g. -xxx.xxxxx)
 Datum: NAD27 NAD83 WGS84
 County: _____ Elevation: _____ GL KB
 Lease Name: _____ Well #: _____
 Well Type: (check one) Oil Gas OG WSW Other: _____
 SWD Permit #: _____ ENHR Permit #: _____
 Gas Storage Permit #: _____
 Spud Date: _____ Date Shut-In: _____

	Conductor	Surface	Production	Intermediate	Liner	Tubing
Size						
Setting Depth						
Amount of Cement						
Top of Cement						
Bottom of Cement						

Casing Fluid Level from Surface: _____ How Determined? _____ Date: _____
 Casing Squeeze(s): _____ to _____ w / _____ sacks of cement, _____ to _____ w / _____ sacks of cement. Date: _____
(top) (bottom) (top) (bottom)
 Do you have a valid Oil & Gas Lease? Yes No
 Depth and Type: Junk in Hole at _____ Tools in Hole at _____ Casing Leaks: Yes No Depth of casing leak(s): _____
(depth) (depth)
 Type Completion: ALT. I ALT. II Depth of: DV Tool: _____ w / _____ sacks of cement Port Collar: _____ w / _____ sack of cement
(depth) (depth)
 Packer Type: _____ Size: _____ Inch Set at: _____ Feet
 Total Depth: _____ Plug Back Depth: _____ Plug Back Method: _____

Geological Data:

Formation Name	Formation Top	Formation Base	Completion Information
1. _____	At: _____	to _____ Feet	Perforation Interval _____ to _____ Feet or Open Hole Interval _____ to _____ Feet
2. _____	At: _____	to _____ Feet	Perforation Interval _____ to _____ Feet or Open Hole Interval _____ to _____ Feet

UNDER PENALTY OF PERJURY I HEREBY ATTEST THAT THE INFORMATION CONTAINED HEREIN IS TRUE AND CORRECT TO THE BEST OF MY KNOWLEDGE

Submitted Electronically

Do NOT Write in This Space - KCC USE ONLY	Date Tested: _____	Results: _____	Date Plugged: _____	Date Repaired: _____	Date Put Back in Service: _____
	Review Completed by: _____ Comments: _____				
TA Approved: <input type="checkbox"/> Yes <input type="checkbox"/> Denied Date: _____					

Mail to the Appropriate KCC Conservation Office:

	KCC District Office #1 - 210 E. Frontview, Suite A, Dodge City, KS 67801	Phone 620.225.8888
	KCC District Office #2 / UPGS - 3450 N. Rock Road, Building 600, Suite 601, Wichita, KS 67226	Phone 316.630.4000
	KCC District Office #3 - 1500 SW Seventh Steet, Chanute, KS 66720	Phone 620.432.2300
	KCC District Office #4 - 2301 E. 13th Street, Hays, KS 67601-2651	Phone 785.625.0550

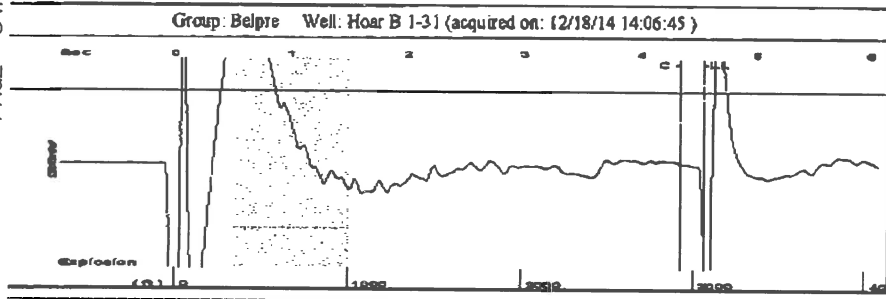
Received Fax: Dec 18 2014 5:22PM Fax Station: EG Holl Co. LLC

PAGE 04/06

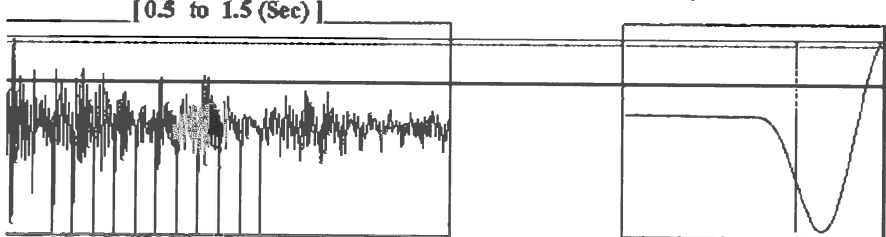
FGHOLL

6209953323

12/18/2014 16:41

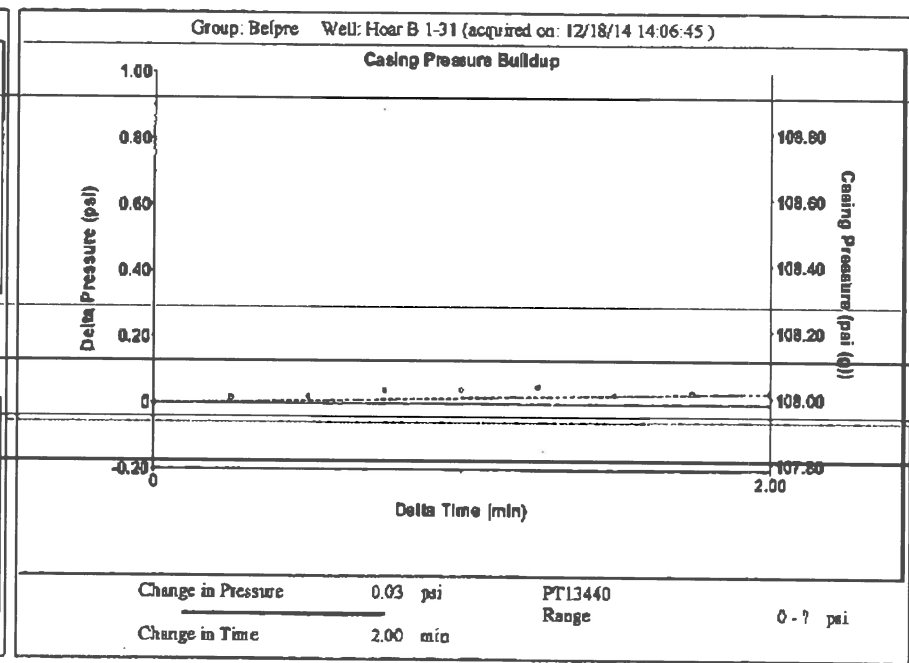


Filter Type High Pass Automatic Collar Count Yes Time 4.55 sec
 Manual Acoustic Velocity 1337.47 ft/s Manual JTS/sec 21.4133 Joints 98.1373
 Depth 3064.83 ft



Analysis Method: Automatic

Production Current Potential Oil -.- BBL/D Water -.- BBL/D Gas -.- Mscf/D		Casing Pressure 108.0 psi (g) Casing Pressure Buildup 0.033 psi 2.00 min Gas/Liquid Interface Pressure 116.6 psi (g)	Producing Annular Gas Flow 0 Mscf/D % Liquid 100 %
IPR Method Vogel PBHP/SBHP -.- Production Efficiency 0.0	Liquid Level Depth 3064.83 ft Pump Intake Depth 4373.00 ft Formation Depth 4373.00 ft		Pump Intake 550.6 psi (g) Producing BHP 550.6 psi (g) Static BHP -.- psi (g)
Oil 40 deg API Water 1.05 Sp.Gr.H2O Gas 0.65 Sp.Gr.AIR	Formation Submergence Total Gaseous Liquid Column HT (TVD) 1308 ft Equivalent Gas Free Liquid HT (TVD) 1308 ft		
Acoustic Velocity 1347.18 ft/s Acoustic Test			



Production Current Potential Oil -.- BBL/D Water -.- BBL/D Gas -.- Mscf/D		Casing Pressure 108.0 psi (g) Casing Pressure Buildup 0.033 psi 2.00 min Gas/Liquid Interface Pressure 116.6 psi (g)	Producing Annular Gas Flow 0 Mscf/D % Liquid 100 %
IPR Method Vogel PBHP/SBHP -.- Production Efficiency 0.0	Liquid Level Depth 3064.83 ft Pump Intake Depth 4373.00 ft Formation Depth 4373.00 ft		Pump Intake 550.6 psi (g) Producing BHP 550.6 psi (g) Static BHP -.- psi (g)
Oil 40 deg API Water 1.05 Sp.Gr.H2O Gas 0.65 Sp.Gr.AIR	Formation Submergence Total Gaseous Liquid Column HT (TVD) 1308 ft Equivalent Gas Free Liquid HT (TVD) 1308 ft		
Acoustic Velocity 1347.18 ft/s Acoustic Test			

Acoustic Velocity	1347.18 ft/s	Joints counted	88
Joints Per Second	21.5686 jts/sec	Joints to liquid level	98.1373
Depth to liquid level	3064.83 ft	Filter Width	19.4133
Automatic Collar Count	Yes	Time to 1st Collar	0.268
			21.4133
			4.348

Conservation Division
District Office No. 1
210 E. Frontview, Suite A
Dodge City, KS 67801



Phone: 620-225-8888
Fax: 620-225-8885
<http://kcc.ks.gov/>

Shari Feist Albrecht, Chair
Jay Scott Emler, Commissioner
Pat Apple, Commissioner

Sam Brownback, Governor

December 23, 2014

Loveness Mpanje
F. G. Holl Company L.L.C.
9431 E CENTRAL STE 100
WICHITA, KS 67206-2563

Re: Temporary Abandonment
API 15-145-20643-00-00
HOAR B 1-31
NW/4 Sec.31-23S-17W
Pawnee County, Kansas

Dear Loveness Mpanje:

"Your temporary abandonment (TA) application for the well listed above has been approved. In accordance with K.A.R. 82-3-111 the TA status of this well will expire 12/23/2015.

- * If you return this well to service or plug it, please notify the District Office.
- * If you sell this well you are required to file a Transfer of Operator form, T-1.
- * If the well will remain temporarily abandoned, you must submit a new TA application, CP-111, before 12/23/2015.

You may contact me at the number above if you have questions.

Very truly yours,

Michael Maier"