



TEMPORARY ABANDONMENT WELL APPLICATION

OPERATOR: License# _____

Name: _____

Address 1: _____

Address 2: _____

City: _____ State: _____ Zip: _____ + _____

Contact Person: _____

Phone: (_____) _____

Contact Person Email: _____

Field Contact Person: _____

Field Contact Person Phone: (_____) _____

API No. 15- _____

Spot Description: _____

____ - ____ - ____ - ____ Sec. _____ Twp. _____ S. R. _____ ☐ E ☐ W_____ feet from ☐ N / ☐ S Line of Section_____ feet from ☐ E / ☐ W Line of Section

GPS Location: Lat: _____, Long: _____

Datum: ☐ NAD27 ☐ NAD83 ☐ WGS84County: _____ Elevation: _____ ☐ GL ☐ KB

Lease Name: _____ Well #: _____

Well Type: (check one) ☐ Oil ☐ Gas ☐ OG ☐ WSW ☐ Other: _____☐ SWD Permit #: _____ ☐ ENHR Permit #: _____☐ Gas Storage Permit #: _____

Spud Date: _____ Date Shut-In: _____

	Conductor	Surface	Production	Intermediate	Liner	Tubing
Size						
Setting Depth						
Amount of Cement						
Top of Cement						
Bottom of Cement						

Casing Fluid Level from Surface: _____ How Determined? _____ Date: _____

Casing Squeeze(s): _____ to _____ w / _____ sacks of cement, _____ to _____ w / _____ sacks of cement. Date: _____

Do you have a valid Oil & Gas Lease? ☐ Yes ☐ NoDepth and Type: ☐ Junk in Hole at _____ ☐ Tools in Hole at _____ Casing Leaks: ☐ Yes ☐ No Depth of casing leak(s): _____Type Completion: ☐ ALT. I ☐ ALT. II Depth of: ☐ DV Tool: _____ w / _____ sacks of cement ☐ Port Collar: _____ w / _____ sack of cement

Packer Type: _____ Size: _____ Inch Set at: _____ Feet

Total Depth: _____ Plug Back Depth: _____ Plug Back Method: _____

Geological Data:

Formation Name

Formation Top Formation Base

Completion Information

1. _____ At: _____ to _____ Feet Perforation Interval _____ to _____ Feet or Open Hole Interval _____ to _____ Feet

2. _____ At: _____ to _____ Feet Perforation Interval _____ to _____ Feet or Open Hole Interval _____ to _____ Feet

UNDER PENALTY OF PERJURY I HEREBY ATTEST THAT THE INFORMATION CONTAINED HEREIN IS TRUE AND CORRECT TO THE BEST OF MY KNOWLEDGE

Submitted Electronically

Do NOT Write in This
Space - KCC USE ONLY

Date Tested: _____ Results: _____ Date Plugged: _____ Date Repaired: _____ Date Put Back in Service: _____

Review Completed by: _____ Comments: _____

TA Approved: ☐ Yes ☐ Denied Date: _____

Mail to the Appropriate KCC Conservation Office:

	KCC District Office #1 - 210 E. Frontview, Suite A, Dodge City, KS 67801	Phone 620.225.8888
	KCC District Office #2 / UPGS - 3450 N. Rock Road, Building 600, Suite 601, Wichita, KS 67226	Phone 316.630.4000
	KCC District Office #3 - 1500 SW Seventh Steet, Chanute, KS 66720	Phone 620.432.2300
	KCC District Office #4 - 2301 E. 13th Street, Hays, KS 67601-2651	Phone 785.625.0550

General

Well ID - * -
Well IRIS 1-1H 12-16-14
Company SANDRIDGE
Operator - * -
Lease Name IRIS 1-1H 12-16-14
Elevation 0.00 ft
Production Method Gas Lift

Comment

Surface Unit

Manufacturer - * -
Unit Class Conventional
Unit API Number - * -
Measured Stroke Length - * - in
Rotation CW
Counter Balance Effect (Weights Level) - * - Klb
Weight Of Counter Weights 2000 lb

Prime Mover

Motor Type Electric
Rated HP - * - HP
Run Time 24 hr/day
MFG/Comment - * -

Electric Motor Parameters

Rated Full Load AMPS - * -
Rated Full Load RPM - * -
Synchronous RPM 1200
Voltage - * -
Hertz 60
Phase 3
Power Consumption 5
Power Demand 8 \$/KW

Tubulars

Tubing OD 2.875 in
Casing OD 7.000 in
Average Joint Length 31.700 ft
Anchor Depth - * - ft
Kelly Bushing 0.00 ft

Pump

Plunger Diameter - * - in
Pump Intake Depth 5055.00 ft
**Total Rod Length < Pump Depth

Polished Rod

Polished Rod Diameter - * - in

Rod String

	Top Taper	Taper 2	Taper 3	Taper 4	Taper 5	Taper 6
Rod Type	- * -	- * -	- * -	- * -	- * -	- * -
Rod Length	- * -	- * -	- * -	- * -	- * -	- * - ft
Rod Diameter	- * -	- * -	- * -	- * -	- * -	- * - in
Rod Weight	0.0	0.0	0.0	0.0	0.0	0.0 lb

Total Rod Length 0
Total Rod Weight 0.00

Damp Up 0.05
Damp Down 0.05

Conditions

Pressure

Static BHP 580.3 psi (g)
Static BHP Method Acoustic
Static BHP Date 12/16/2014

Producing BHP - * - psi (g)
Producing BHP Method Acoustic
Producing BHP Date 12/16/2014
Formation Depth 5055.00 ft

Surface Producing Pressures

Tubing Pressure - * - psi (g)
Casing Pressure 438.2 psi (g)

Casing Pressure Buildup

Change in Pressure 0.025 psi
Over Change in Time 1.00 min

Production

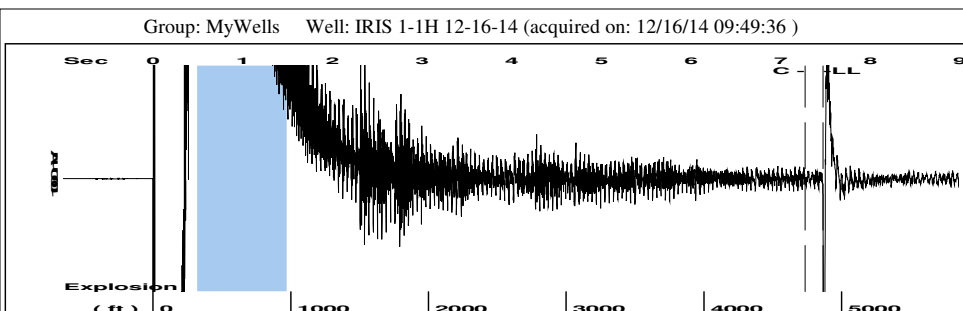
Oil Production - * - BBL/D
Water Production - * - BBL/D
Gas Production - * - Mscf/D
Production Date - * -

Temperatures

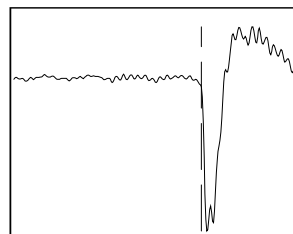
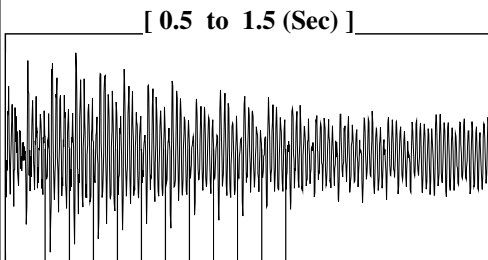
Surface Temperature 70 deg F
Bottomhole Temperature 150 deg F

Fluid Properties

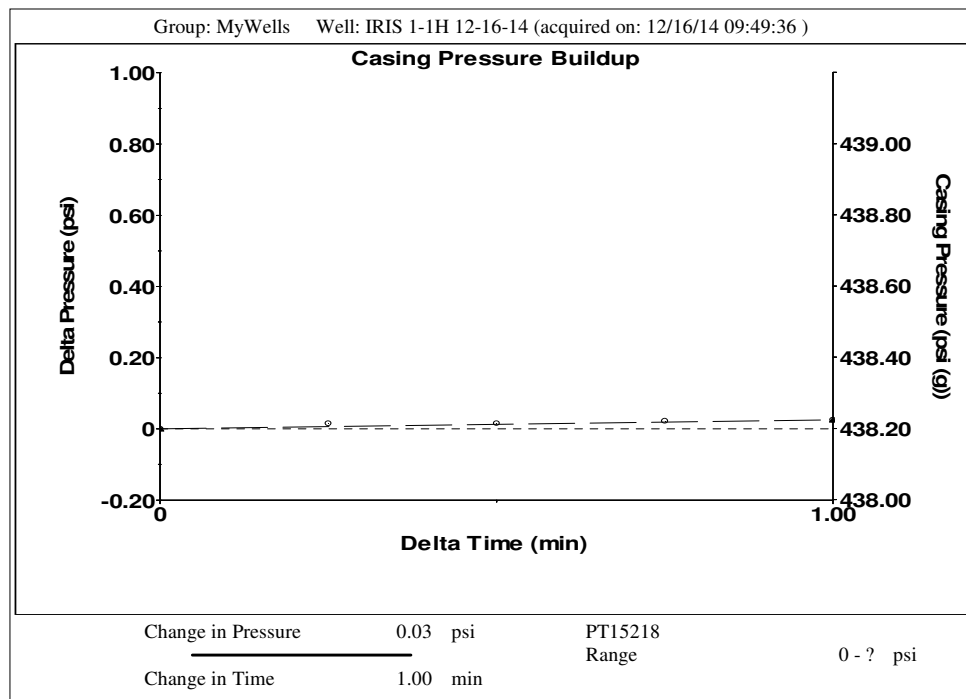
Oil API 40 deg.API
Water Specific Gravity 1.05 Sp.Gr.H2O



Filter Type High Pass Automatic Collar Count Yes Time 7.476 sec
 Manual Acoustic Veloc 1283.4 ft/s Manual JTS/sec 20.2429 Joints 153.441 Jts
 Depth 4864.09 ft



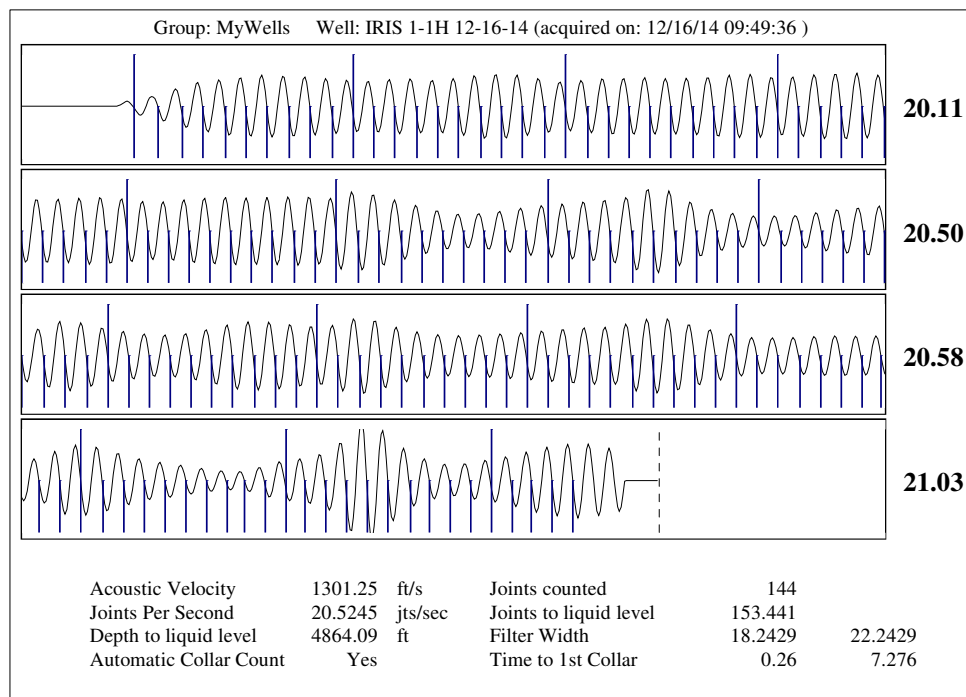
Analysis Method: Automatic



Group: MyWells Well: IRIS 1-1H 12-16-14 (acquired on: 12/16/14 09:49:36)

Production		Potential	Casing Pressure	Static
Oil	- * -	- * - BBL/D	438.2 psi (g)	Oil Column Height
Water	- * -	- * - BBL/D	Casing Pressure Buildup	MD 0 ft
Gas	- * -	- * - Mscf/D	0.025 psi	1.00 min
IPR Method		Vogel	Gas/Liquid Interface Pressure	Water Column Height
PBHP/SBHP		- * -	493.5 psi (g)	MD 191 ft
Production Efficiency		0.0	Liquid Level Depth	Static BHP
Oil	40 deg.API		4864.09 ft	580.3 psi (g)
Water	1.05 Sp.Gr.H2O		Tubing Intake Depth	
Gas	0.67 Sp.Gr.AIR		5055.00 ft	
Acoustic Velocity	1301.25 ft/s		Formation Depth	
			5055.00 ft	

Acoustic Test



Conservation Division
District Office No. 1
210 E. Frontview, Suite A
Dodge City, KS 67801



Phone: 620-225-8888
Fax: 620-225-8885
<http://kcc.ks.gov/>

Shari Feist Albrecht, Chair
Jay Scott Emler, Commissioner
Pat Apple, Commissioner

Sam Brownback, Governor

December 30, 2014

Tiffany Golay
SandRidge Exploration and Production LLC
123 ROBERT S. KERR AVE
OKLAHOMA CITY, OK 73102-6406

Re: Temporary Abandonment
API 15-033-21611-01-00
Iris 1-1H
NW/4 Sec.01-31S-20W
Comanche County, Kansas

Dear Tiffany Golay:

"Your temporary abandonment (TA) application for the well listed above has been approved. In accordance with K.A.R. 82-3-111 the TA status of this well will expire 12/30/2015.

- * If you return this well to service or plug it, please notify the District Office.
- * If you sell this well you are required to file a Transfer of Operator form, T-1.
- * If the well will remain temporarily abandoned, you must submit a new TA application, CP-111, before 12/30/2015.

You may contact me at the number above if you have questions.

Very truly yours,

Michael Maier"