

OPERATOR

Company: Falcon Exploration, Inc.
 Address: 125 N. Market Suite 1252
 Wichita, KS 67202
 Contact Geologist: Brian Fisher
 Contact Phone Nbr: 316-262-1378
 Well Name: Circe N Trust #1-6 (SE)
 Location: Sec. 6 - T28S - R30W
 API: 15-069-20481-0000
 Pool: _____ Field: Colusa South
 State: Kansas Country: USA

Scale 1:240 Imperial

Well Name: Circe N Trust #1-6 (SE)
 Surface Location: Sec. 6 - T28S - R30W
 Bottom Location: _____
 API: 15-069-20481-0000
 License Number: 5316
 Spud Date: 8/25/2014 Time: 9:00 PM
 Region: Gray County
 Drilling Completed: 9/3/2014 Time: 8:05 AM
 Surface Coordinates: 1850' FSL & 2175' FEL
 Bottom Hole Coordinates: _____
 Ground Elevation: 2828.00ft
 K.B. Elevation: 2839.00ft
 Logged Interval: 4600.00ft To: 5450.00ft
 Total Depth: 5450.00ft
 Formation: Mississippian
 Drilling Fluid Type: Chemical/Fresh Water Gel

SURFACE CO-ORDINATES

Well Type: Vertical
 Longitude: _____
 Latitude: _____
 N/S Co-ord: 1850' FSL
 E/W Co-ord: 2175' FEL

LOGGED BY

Keith Reavis
Consulting Geologist

Company: Keith Reavis, Inc.
 Address: 3420 22nd Street
 Great Bend, KS 67530
 Phone Nbr: 620-617-4091
 Logged By: KLG #136 Name: Keith Reavis

CONTRACTOR

Contractor: Sterling Drilling Company
 Rig #: 2
 Rig Type: mud rotary
 Spud Date: 8/25/2014 Time: 9:00 PM
 TD Date: 9/3/2014 Time: 8:05 AM
 Rig Release: _____ Time: _____

ELEVATIONS

K.B. Elevation: 2839.00ft Ground Elevation: 2828.00ft
 K.B. to Ground: 11.00ft

NOTES

Due to results of DST #2, it was decided to run 5 1/2" production casing and further test the Mississippian St. Louis B through perforations and stimulation.

A Tooke Daq gas detection system operated by Sterling Drilling was employed on this well. ROP and gas curves were imported from the Tooke system into this mudlog. Gamma ray and caliper curves were imported from the electrical log suite.

Samples were saved and will be available for review at the Kansas Geological Survey Well Sample Library in Wichita, KS.

Respectfully submitted,
 Keith Reavis

Falcon Exploration, Inc.
daily drilling report

| DATE | 7:00 AM DEPTH | REMARKS |
|------------|---------------|---|
| 08/30/2014 | | Geologist Keith Reavis on location @ 1355 hrs, 4800 ft., drilling ahead Marmaton, Pawnee, Cherokee, bit trip @ 5040' 2020 hrs, out with PDC |
| 08/31/2014 | 5040 | back on bottom with button bit, ctch, resume drilling, Morrow show in upper Morrow sand warrants test, TOH for DST #1, conduct DST #1 |
| 09/01/2014 | 5110 | complete DST #1, successful test, TIH w/bit, resume drilling, Morrow and upper Miss, St. Gen |
| 09/02/2014 | 5330 | drilling ahead, St. Louis, show warrants test, TOH for DST #2, conduct and complete DST #2, successful test, TIH w/bit |
| 09/03/2014 | 5450 | resume drilling, rathole ahead to TD of 5450 at 0805 hrs, ctch, TOH for logs, conduct logging operations, geologist off loc 1915 hrs |

Falcon Exploration, Inc.
well comparison sheet

| DRILLING WELL | | | | | COMPARISON WELL | | | |
|--|--------|---------|------|---------|--|---------|-------------------------|-----|
| Circle N Trust #1-6 (SE) 1850' FSL & 2175' FEL Sec 6-T28S-R30W | | | | | Nightingale #1-6 2050' FNL & 2050' FWL Sec 6-T28S-R30W | | | |
| 2839 KB | | | | | 2844 KB | | Structural Relationship | |
| Formation | Sample | Sub-Sea | Log | Sub-Sea | Log | Sub-Sea | Sample | Log |
| Stark | 4592 | -1753 | 4592 | -1753 | 4591 | -1747 | -6 | -6 |
| Marmaton | 4726 | -1887 | 4724 | -1885 | 4725 | -1881 | -6 | -4 |
| Pawnee | 4821 | -1982 | 4819 | -1980 | 4821 | -1977 | -5 | -3 |
| Cherokee | 4863 | -2024 | 4862 | -2023 | 4862 | -2018 | -6 | -5 |
| Morrow | 5070 | -2231 | 5064 | -2225 | 5066 | -2222 | -9 | -3 |
| Morrow Sand | 5075 | -2236 | 5074 | -2235 | 5069 | -2225 | -11 | -10 |
| St. Gen | 5166 | -2327 | 5182 | -2343 | 5189 | -2345 | 18 | 2 |
| St. Louis | 5270 | -2431 | 5275 | -2436 | 5276 | -2432 | 1 | -4 |
| Total Depth | 5450 | -2611 | 5450 | -2611 | 5458 | -2614 | 3 | 3 |

Drill Stem Test #1



DIAMOND TESTING
 P.O. Box 157
 HOISINGTON, KANSAS 67544
 (800) 542-7313
DRILL-STEM TEST TICKET
 FILE: circle1-6dst1

TIME ON: 8-31 16:09
 TIME OFF: 09-01 00:24

Company **Falcon Exploration** Lease & Well No. **Circle N Trust #1-6**
 Contractor **Sterling Drilling Rig #2** Charge to **Falcon Exploration**
 Elevation **2839 KB** Formation **Morrow** Effective Pay **--** Ft. Ticket No. **S0491**
 Date **8-31-14** Sec. **6** Twp. **28 S** Range **30 W** County **Gray** State **KANSAS**
 Test Approved By **Keith Reavis** Diamond Representative **Jacob McCallie**

Formation Test No. **1** Interval Tested from **5064** ft. to **5085** ft. Total Depth **5085** ft.
 Packer Depth **5059** ft. Size **6 3/4** in. Packer depth **--** ft. Size **6 3/4** in.
 Packer Depth **5064** ft. Size **6 3/4** in. Packer depth **--** ft. Size **6 3/4** in.

Depth of Selective Zone Set _____

Top Recorder Depth (Inside) **5045** ft. Recorder Number **5515** Cap. **5,000** P.S.I.
 Bottom Recorder Depth (Outside) **5067** ft. Recorder Number **5586** Cap. **5,000** P.S.I.
 Below Straddle Recorder Depth _____ ft. Recorder Number _____ Cap. _____ P.S.I.

Mud Type **Chem** Viscosity **49** Drill Collar Length **216** ft. I.D. **2 1/4** in.
 Weight **9.45** Water Loss **11.2** cc. Weight Pipe Length **--** ft. I.D. **2 7/8** in.

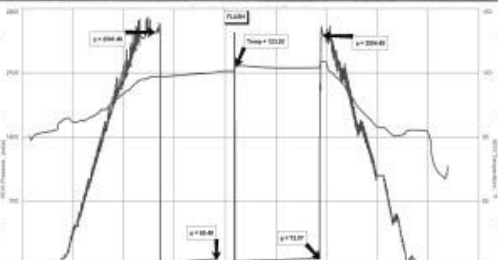
Chlorides **2,100** P.P.M. Drill Pipe Length **4815** ft. I.D. **3 1/2** in.
 Jars: Make **STERLING** Serial Number **4** Test Tool Length **33** ft. Tool Size **3 1/2-IF** in.

Did Well Flow? **NO** Reversed Out **No** Anchor Length **21** ft. Size **4 1/2-FH** in.
 Main Hole Size **7 7/8** Tool Joint Size **4 1/2 XH** in. Surface Choke Size **1** in. Bottom Choke Size **5/8** in.

Blow: 1st Open: **WSB- Died in 5 min** **NOBB**
 2nd Open: **No Blow- Flushed 15 min into-good surge-Died in 30 min** **NOBB**

Recovered **58** ft. of MUD **100% M**

Recovered _____ ft. of _____
 Recovered _____ ft. of _____
 Recovered _____ ft. of _____
 Recovered _____ ft. of _____
 Recovered _____ ft. of _____
 Remarks: _____



TOOL SAMPLE: 100% M

Time Set Packer(s) **6:44 PM** A.M. P.M. Time Started Off Bottom **9:49 PM** A.M. P.M. Maximum Temperature **123**

Initial Hydrostatic Pressure..... (A) **2541** P.S.I.

Initial Flow Period..... Minutes **5** (B) **12** P.S.I. to (C) **14** P.S.I.

Initial Closed In Period..... Minutes **60** (D) **65** P.S.I.

Final Flow Period..... Minutes **30** (E) **17** P.S.I. to (F) **49** P.S.I.

Final Closed In Period..... Minutes **90** (G) **72** P.S.I.

Final Hydrostatic Pressure..... (H) **2504** P.S.I.

Drill Stem Test #2



DIAMOND TESTING
 P.O. Box 157
 HOISINGTON, KANSAS 67544
 (800) 542-7313

TIME ON: 09:00
 TIME OFF: 21:31

DRILL-STEM TEST TICKET
 FILE: circle1-6dst2

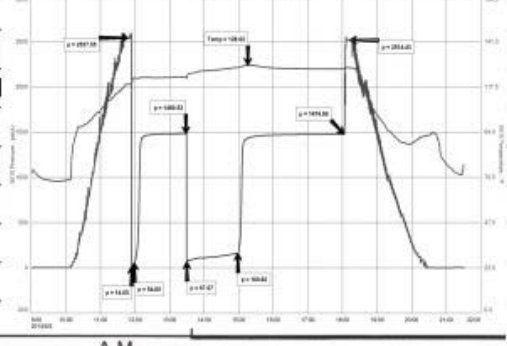
Company **Falcon Exploration** Lease & Well No. Circle N Trust #1-6
 Contractor Sterling Drilling Rig #2 Charge to Falcon Exploration
 Elevation 2839 KB Formation St. Louis Effective Pay -- Ft. Ticket No. S0492
 Date 9-2-14 Sec. 6 Twp. 28 S Range 30 W County Gray State KANSAS
 Test Approved By Keith Reavis Diamond Representative Jacob McCallie

Formation Test No. 2 Interval Tested from 5270 ft. to 5330 ft. Total Depth 5330 ft.
 Packer Depth 5265 ft. Size 6 3/4 in. Packer depth -- ft. Size 6 3/4 in.
 Packer Depth 5270 ft. Size 6 3/4 in. Packer depth -- ft. Size 6 3/4 in.
 Depth of Selective Zone Set

Top Recorder Depth (Inside) 5251 ft. Recorder Number 5515 Cap. 5,000 P.S.I.
 Bottom Recorder Depth (Outside) 5273 ft. Recorder Number 5586 Cap. 5,000 P.S.I.
 Below Straddle Recorder Depth ft. Recorder Number Cap. P.S.I.
 Mud Type Chem Viscosity 55 Drill Collar Length 216 ft. I.D. 2 1/4 in.
 Weight 9.15 Water Loss 8.4 cc. Weight Pipe Length -- ft. I.D. 2 7/8 in.
 Chlorides 1,400 P.P.M. Drill Pipe Length 5021 ft. I.D. 3 1/2 in.
 Jars: Make STERLING Serial Number 4 Test Tool Length 33 ft. Tool Size 3 1/2-IF in.
 Did Well Flow? NO Reversed Out No Anchor Length 60 (28A) ft. Size 4 1/2-FH in.
 Main Hole Size 7 7/8 Tool Joint Size 4 1/2 XH in. Surface Choke Size 1 in. Bottom Choke Size 5/8 in.

Blow: 1st Open: 1/4" Blow- Built to 4 1/2" in 5 min **WSBB**
 2nd Open: 2" Blow- Built to BB in 3 min **BBBB**

Recovered 3116 ft. of GIP
 Recovered 162 ft. of SLGCHMCO 10% G 55% O 35% M
 Recovered 175 ft. of CO 100% O GRAVIT
 Recovered 12 ft. of SLGCM 12% G 88% M
 Recovered 349 ft. of TOTAL FLUID
 Recovered ft. of
 Remarks:



TOOL SAMPLE: 5% G 45% O 50% M
 Time Set Packer(s) 11:55 AM A.M. P.M. Time Started Off Bottom 6:00 PM A.M. P.M. Maximum Temperature 129

Initial Hydrostatic Pressure..... (A) 2538 P.S.I.
 Initial Flow Period..... Minutes 5 (B) 15 P.S.I. to (C) 54 P.S.I.
 Initial Closed In Period..... Minutes 90 (D) 1481 P.S.I.
 Final Flow Period..... Minutes 90 (E) 68 P.S.I. to (F) 161 P.S.I.
 Final Closed In Period..... Minutes 180 (G) 1475 P.S.I.
 Final Hydrostatic Pressure..... (H) 2514 P.S.I.

ROCK TYPES

| | | | | |
|----------|-----------|------------|------------|----|
| Clystgy | Lmst fw<7 | shale, gm | Carbon Sh | Ss |
| sdy lmst | Lmst fw>7 | shale, gry | shale, red | |

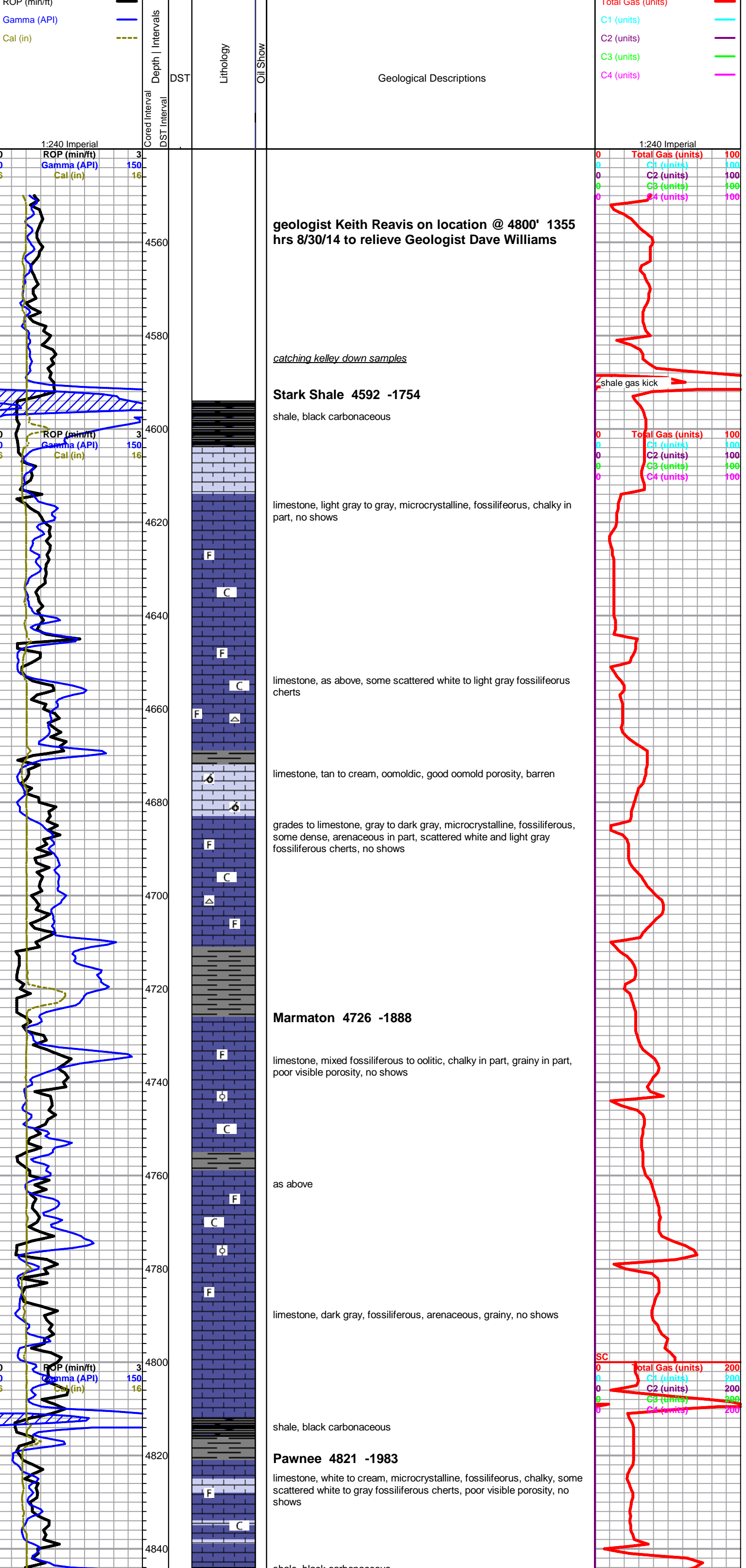
ACCESSORIES

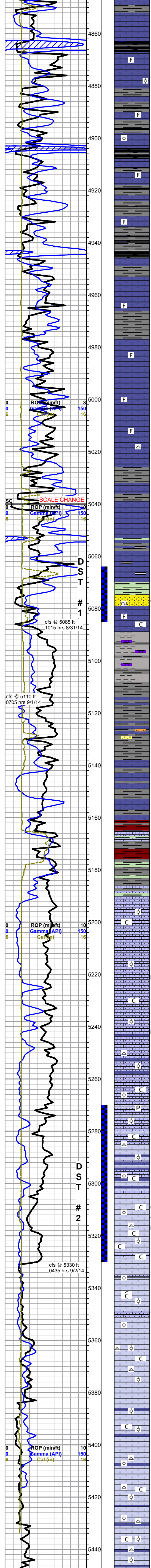
| | | | |
|--|--|---|--|
| MINERAL | FOSSIL | STRINGER | TEXTURE |
| <ul style="list-style-type: none"> Glauconite Pyrite Chert White | <ul style="list-style-type: none"> F Fossils < 20% o Oolite o Oomoldic | <ul style="list-style-type: none"> Limestone Sandstone Siltstone carb shale | <ul style="list-style-type: none"> C Chalky |

OTHER SYMBOLS

| | |
|--|---|
| Oil Show | DST |
| <ul style="list-style-type: none"> Good Show Fair Show Poor Show Spotted or Trace Questionable Strn Dead Oil Strn Fluorescence Gas | <ul style="list-style-type: none"> DST Int DST alt Core tail pipe |

Printed by GEOstrip VC Striplog version 4.0.8.15 (www.grsi.ca)





Cherokee 4863 -2025

shale, black carbonaceous
 limestone, white to cream and gray, grainy fossiliferous to oolitic, some pelletal,

grading to limestone, as above, mixed with variable dense gray fossiliferous, gray arenaceous limestones and gray and black shales

as above

limestone, cream, microcrystalline, chalky fossiliferous and limestone, variable gray and tan, mostly cryptocrystalline, dense, fossiliferous, no shows

limestone, tan to gray, micro-cryptocrystalline, fossiliferous, poor visible porosity, some scattered fossiliferous cherts, no shows

DST #1: 5064-5085' (Morrow), 5-60-30-90. Weak surface blow on first open, died in 5 minutes. No blow on 2nd. Flushed tool, no help. Recovered 58' mud. IHP 2541 -- IFP'S 12-14# -- ISIP 65# -- FFP'S 17-49# -- FSIP 72# -- FHP 2504#.

bit trip @ 4040', out with PDC, in with button

limestone, cream to gray, microcrystalline, fossiliferous, chalky in part, no shows

grades to limestone, dark gray to black, micro-cryptocrystalline, cherty, sandy in part, some fossiliferous, very dense, with black shales, no shows

Morrow 5070 -2231

30 min sample
 sandstone, gray to brown, very fine grained, glauconitic to silty, sub-round to rounded, fair sorted, friable to fair cementing, mostly saturated stain, gilsonitic, good show free oil, strong odor, no fluorescence, fair cut

also influx of limestone with the sand, gray to cream to blue/gray, microcrystalline, fossiliferous, chalky in part, no shows

@ 5090 grades to gray claystone and shale, with light gray silty shale

influx limestone, blue/gray chalky fossiliferous, some weathered, cream to tan, fossiliferous, trace pelletal, chalky to arenaceous, no visible porosity or shows - still mostly claystone and shale

gray fissile shales, with trace green very fine grain glauconitic dirty sandstone and siltstone, no shows

limestone, cream to gray mottled and blue/gray mottled, fossiliferous, grainy, some pelletal, chalky in part, weathered in part, no visible porosity or shows

Miss St. Gen. 5166 -2327

5180 sample, limestone, cream, micro-oolitic, sandy, fairly dense, no shows, influx red shales, red wash in samples

5190 flood gray and green fissile shales with limestone as above

Miss. St. Gen. Log Top 5182 -2343

limestone, light gray to cream, micro-oolitic, very sandy, mostly dense but chalky in part, no shows, shales drop out

as above

as above, trace light black dead staining, no free oil or odor

as above, trace staining, some scattered light gray to cream cryptocrystalline lithographic limestone, trace chert

DST #2: 5270-5330' (St Louis), 5-90-90-180. 1/4 inch blow on first open. Built to 4-1/2 inches in 5 minutes. 2nd open. Built to BOB in 3 minutes. Recovered 3116' GIP, 162' SI.GCMO (10% gas, 55% oil, 35% mud), 175' CO, 12' SI.GCM (12% gas, 88% mud). IHP 2538# -- IFP 15-54# -- ISIP 1481 -- FFP'S 68-161# -- FSIP 1475# -- FHP 2514 #. BHT 129 deg F.

St. Louis 5270 -2431

limestone, cream to light gray, sandy although less than above, micro-oolitic to small sub-mature oolitic, chalky to grainy, slightly glauconitic, some pyritic, poor visible porosity, no shows or fluorescence

limestone, as above, with gray to cream fine to medium oolitic, less slightly sandy, limestone, cream, chalky, flattened oolitic, some scattered cherts, no shows

grading to limestone, gray, cryptocrystalline, dense, flattened oolitic,

limestone, white to light gray to cream, mature chalky oolitic, some free oolites, some scattered inter-oolite porosity, scattered light black stain, sheen in tray, trace gassy free oil on break, fair odor, no fluorescence, poor to good cut, abundant chalk, some light gray fossiliferous cherts

limestone, grades back to cream to light gray, chalky oolitic, sub-mature to flattened, poor porosity, trace glauconitic, no shows

resume drilling at 5330' with PDC bit

poor samples, trip trash

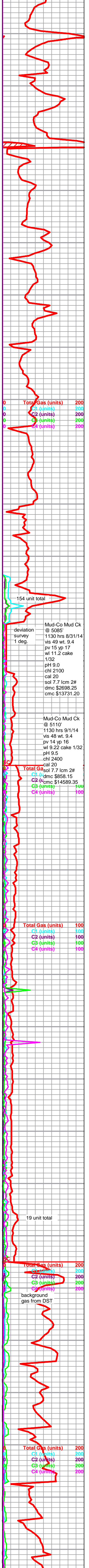
limestone, as above, some mature chalky oolitic, some sandy oolitic with medium rounded quartz sand grain inclusions

sandy oolitic drops out, influx abundant chert, white to tan translucent, slight fossiliferous, fresh, sharp,

limestone, cream to light gray, chalky flattened oolitic, slightly glauconitic, poor porosity, cherts drop out, no shows, some scattered chalky cryptocrystalline sub-lithographic, no shows

as above, with mixed cherts

as above



| | |
|-------------------|-----|
| Total Gas (units) | 200 |
| C1 (units) | 200 |
| C2 (units) | 200 |
| C3 (units) | 200 |
| C4 (units) | 200 |

| | |
|-----------------------|------------------|
| Mud-Co Mud Ck @ 5085' | 1130 hrs 8/31/14 |
| vis | 49 wt. 9.4 |
| pv | 15 yp 17 |
| wl | 11.2 cake |
| 1/32 | |
| pH | 9.0 |
| chl | 2100 |
| cal | 20 |
| sol | 7.7 lcm 2# |
| dmc | \$2698.25 |
| cmc | \$13731.20 |

| | |
|-----------------------|-----------------|
| Mud-Co Mud Ck @ 5110' | 1130 hrs 9/1/14 |
| vis | 48 wt. 9.4 |
| pv | 14 yp 16 |
| wl | 9.22 cake 1/32 |
| pH | 9.5 |
| chl | 2400 |
| cal | 20 |
| sol | 7.7 lcm 2# |
| dmc | \$858.15 |
| cmc | \$14589.35 |
| C1 (units) | 100 |
| C2 (units) | 100 |
| C3 (units) | 100 |
| C4 (units) | 100 |

| | |
|-------------------|-----|
| Total Gas (units) | 100 |
| C1 (units) | 100 |
| C2 (units) | 100 |
| C3 (units) | 100 |
| C4 (units) | 100 |

| | |
|-------------------|-----|
| Total Gas (units) | 100 |
| C1 (units) | 100 |
| C2 (units) | 100 |
| C3 (units) | 100 |
| C4 (units) | 100 |

| | |
|-------------------|-----|
| Total Gas (units) | 200 |
| C1 (units) | 200 |
| C2 (units) | 200 |
| C3 (units) | 200 |
| C4 (units) | 200 |

| | |
|-------------------|-----|
| Total Gas (units) | 200 |
| C1 (units) | 200 |
| C2 (units) | 200 |
| C3 (units) | 200 |
| C4 (units) | 200 |

Rotary TD 5450 ft, 0805 hrs, 9/3/14
Nabors Wireline TD 5450 ft
complete logging operations @ 1850 hrs 9/3/14