



WELL FILE

Scale 1:240 (5"=100') Imperial  
Measured Depth Log

Well Name: LENA MAI # 3-29  
Well Id:  
Location: SW SE NW NE Sec 29 23s 32w, Finney, Kansas  
License Number: 15-055-22334-00-00  
Spud Date: 8/5/2014  
Region: CONGDON NORTH  
Drilling Completed: 8/20/2014  
Surface Coordinates: 1244' SOUTH OF NE CORNER/ 1743' WEST OF NE CORNER

Bottom Hole  
Coordinates:  
Ground Elevation (ft): 2842' K.B. Elevation (ft): 2854'  
Logged Interval (ft): 3750' To: 4930' Total Depth (ft): 4930'  
Formation: LANSING MARMATON MOROW ST LOUIS  
Type of Drilling Fluid: Natural Chemical

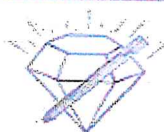
Printed by WellSight Log Viewer from WellSight Systems 1-800-447-1534 www.WellSight.com

OPERATOR

Company: BEREXCO LLC  
Address: 2601 NW EXPRESSWAY, STE 1100E  
OKLAHOMA CITY, OKLA. 73112  
GEO: Pete Wilson

GEOLOGIST

Name: Tim Hedrick/ Ian Bosmeijer  
Company: Earth Tech OGL, Inc.  
Address: PO Box 683  
Hooker, Okla. 73945  
1-888-543-8378 Cell 580-754-0062



DIAMOND TESTING  
P.O. Box 157  
HOISINGTON, KANSAS 67544  
(800) 542-7313  
DRILL-STEM TEST TICKET  
FILE: LENA MAI 3-29 Dst 1

TIME ON: 19:59 Aug 14  
TIME OFF: 09:10 Aug 15

Company: Berexco LLC  
Contractor: Berexco Drilling  
Elevation: 2852 Formation: Marm Fl. Scott effective Pay Ft. Ticks No. RR005  
Date: 08/14/2014 Sec: 29 Twp: 23 S Range: 32 W County: Finney State: KANSAS  
Test Approved By: Tim Hedrick Diamond Representative: RICKY RAY  
Formation Test No. 1 Interval Tested from: 4395 ft. to 4457 ft. Total Depth: 4457 ft.  
Packer Depth: 4391 ft. Size: 6 3/4 in. Packer depth: ft. Slot: 6 3/4 in.  
Packer Depth: 4395 ft. Size: 6 3/4 in. Packer depth: ft. Slot: 6 3/4 in.  
Depth of Selective Zone Set:  
Top Recorder Depth (inside): 4378 ft. Recorder Number: 0062 Cap: 5000 P.S.I.  
Bottom Recorder Depth (Outside): 4424 ft. Recorder Number: 5954 Cap: 5000 P.S.I.

Packer Depth 4391 ft. Size 6 3/4 in. Packer depth \_\_\_\_\_ ft. Size 6 3/4 in.  
Packer Depth 4396 ft. Size 6 3/4 in. Packer depth \_\_\_\_\_ ft. Size 6 3/4 in.

Depth of Selective Zone Set \_\_\_\_\_

Top Recorder Depth (Inside) 4378 ft. Recorder Number 0062 Cap. 5000 P.S.I.  
Bottom Recorder Depth (Outside) 4434 ft. Recorder Number 5954 Cap. 5000 P.S.I.  
Below Straddle Recorder Depth \_\_\_\_\_ ft. Recorder Number \_\_\_\_\_ Cap. \_\_\_\_\_ P.S.I.

Mud Type CHEMICAL Viscosity 50 Drill Collar Length 616 ft. I.D. 2 1/4 in.  
Weight 9.5 Water Loss 10 cc. Weight Pipe Length 0 ft. I.D. 2 7/8 in.  
Chlorides 5100 p.p.m. Drill Pipe Length 5747 ft. I.D. 3 1/2 in.  
Jars: Make STERLING Serial Number B'SP Test Tool Length 33 ft. Tool Size 3 1/2-FH in.  
Did Well Flow? NA Reversed Out NA Anchor Length 61A(200') ft. Size 4 1/2-FH in.  
Main Hole Size 7 7/8 Tool Joint Size 4 1/2 in. Surface Choke Size 1 in. Bottom Choke Size 5/8 in.

Blow 1st Open: 1/2" BOB in 13 1/2 mins NOBB  
2nd Open: 1/4" BOB in 20 1/2 mins NOBB

Recovered 300 ft. of HWM 40% W 50% M  
Recovered 616 ft. of HWM 50% W 20% M  
Recovered 925 ft. of Total Fluid

Recovered \_\_\_\_\_ ft. of RW: 12 @ 78 Deg  
Recovered \_\_\_\_\_ ft. of Chlorides 55,000 PPM Price Job \_\_\_\_\_  
Recovered \_\_\_\_\_ ft. of PH: 7 Other Charges \_\_\_\_\_  
Remarks: Tool Sample: 2% G 1% O 77% W 20% M Insurance \_\_\_\_\_  
Total \_\_\_\_\_

Time Set Packets) 12:48 AM Aug 15 A.M. P.M. Time Started Off Bottom: 5:18 AM Aug 15 A.M. P.M. Maximum Temperature 115

Initial Hydrostatic Pressure \_\_\_\_\_ (A) 2114 P.S.I.  
Initial Flow Period \_\_\_\_\_ Minutes 30 (B) \_\_\_\_\_ P.S.I. to (C) 266 P.S.I.  
Initial Closed In Period \_\_\_\_\_ Minutes 60 (D) 1214 P.S.I.  
Final Flow Period \_\_\_\_\_ Minutes 60 (E) 280 P.S.I. to (F) 436 P.S.I.  
Final Closed In Period \_\_\_\_\_ Minutes 120 (G) 1199 P.S.I.  
Final Hydrostatic Pressure \_\_\_\_\_ (H) 2091 P.S.I.

Caution: Testing shall not be taken for damages of any kind to the property or personnel of the user for which a test is made or for any loss suffered or incurred, directly or indirectly, through the use of its equipment, or its statements or reports concerning the result of any test. Tools lost or damaged in the hole shall be paid for at once by the party for whom the test is made.



**DIAMOND TESTING**  
P.O. Box 157  
HOISINGTON, KANSAS 67544  
(800) 542-7313  
**DRILL-STEM TEST TICKET**  
FILE: Lens Mai 3-29 Oct 2

TIME ON: 21:07 Aug 15  
TIME OFF: 06:53 Aug 16

Company Berexco LLC Lens: & Wel. No. Lens Mai 3-29  
Contractor Beredco Drilling Charge to: Berexco LLC

Elevation 2852 Formation \_\_\_\_\_ Ft. Scott Effective Pay \_\_\_\_\_ Ft. Ticket No. RR066  
Date 08/16/2014 Sec 29 Twp. 23 S Range 32 W County Finney State KANSAS  
Test Approved by Ian Botmaijer Diamond Representative RICKY RAY

Formation Test No. 2 Interval Tested from 4501 ft. to 4524 ft. Total Depth 4524 ft.  
Packer Depth 4496 ft. Size 6 3/4 in. Packer depth \_\_\_\_\_ ft. Size 6 3/4 in.  
Packer Depth 4501 ft. Size 6 3/4 in. Packer depth \_\_\_\_\_ ft. Size 6 3/4 in.

Depth of Selective Zone Set \_\_\_\_\_

Top Recorder Depth (Inside) 4463 ft. Recorder Number 0062 Cap. 5000 P.S.I.  
Bottom Recorder Depth (Outside) 4505 ft. Recorder Number 5954 Cap. 5000 P.S.I.  
Below Straddle Recorder Depth \_\_\_\_\_ ft. Recorder Number \_\_\_\_\_ Cap. \_\_\_\_\_ P.S.I.

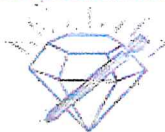
Mud Type CHEMICAL Viscosity 50 Drill Collar Length 616 ft. I.D. 2 1/4 in.  
Weight 9.15 Water Loss 11.6 cc. Weight Pipe Length 0 ft. I.D. 2 7/8 in.  
Chlorides 5200 p.p.m. Drill Pipe Length 5652 ft. I.D. 3 1/2 in.  
Jars: Make STERLING Serial Number B'SP Test Tool Length 33 ft. Tool Size 3 1/2-FH in.  
Did Well Flow? NA Reversed Out NA Anchor Length 23 ft. Size 4 1/2-FH in.  
Main Hole Size 7 7/8 Tool Joint Size 4 1/2 in. Surface Choke Size 1 in. Bottom Choke Size 5/8 in.

Blow 1st Open: WSB Blow Died Out NO BB  
2nd Open: No Blow NO BB

Recovered 3 ft. of M 100% M  
Recovered \_\_\_\_\_ ft. of

Lease Well Flow?	Revised Unit	Maximum Length
Main Hole Size 7 7/8	Tool Joint Size 4 1/2 in	Surface Choke Size 7 in
Bottom Choke Size 5/8 in		
Blow 1st Open: WSB	Slow Died Out	NO BB
2nd Open: No Blow		NO BB
Recovered 3 ft. of M	100% M	
Recovered ft. of		
Recovered ft. of		
Recovered ft. of		
Recovered ft. of		Price Job
Recovered ft. of		Other Charges
Remarks: Tool Sample: 100% M		Insurance
		Total
Time Set Packer(s) 1:07AM Aug 16 A.M.	Time Started Off Bottom 4:07 AM Aug 16 P.M.	Maximum Temperature 111
Initial Hydrostatic Pressure (A)	2166 P.S.I.	
Initial Flow Period (B) Minutes	30	7 P.S.I. to (C) 10 P.S.I.
Initial Closed In Period (D) Minutes	60	1006 P.S.I.
Final Flow Period (E) Minutes	30	12 P.S.I. to (F) 14 P.S.I.
Final Closed In Period (G) Minutes	60	889 P.S.I.
Final Hydrostatic Pressure (H)	2178 P.S.I.	

Caution: Testing shall not be taken for formation of any kind by the industry or personnel of the well where a test is made or for any loss of flow or sustained, or other, or indirectly, through the use of this equipment, or its statement or operation concerning the result of any test. Tool joint or damaged or worn pipe shall be repaired or replaced by the party for whom the test is made.



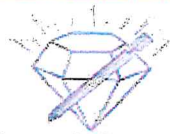
**DIAMOND TESTING**  
P.O. Box 157  
HOISINGTON, KANSAS 67544  
(800) 542-7313  
**DRILL-STEM TEST TICKET**  
FILE: Lens Mai 3-29 Dst 3

TIME ON: 15:50 Aug 17  
TIME OFF: 00:56 Aug 18

Company: <b>Berexco LLC</b>	Lease & Well No: Lens Mai 3-29	
Contact: <b>Beredco Drilling</b>	Charge to: Berexco LLC	
Elevation: 2852	Formation: <b>Morrow Sand</b>	
Effective Pay:	Fl. Ticket No. RR067	
Date: 08/18/2014	Sec: 28	
Top: 23 S Range	32 W County	
Test Approved By: Ian Bosma/jlr	Drillstem Representative: <b>RICKY RAY</b>	
Formation Test No. 3	Interval Tested from: 4777 ft. to 4785 ft.	
Total Depth: 4785 ft.		
Packer Depth: 4772 ft. Size: 6 3/4 in.	Packer depth: ft. Size: 6 3/4 in.	
Packer Depth: 4777 ft. Size: 6 3/4 in.	Packer depth: ft. Size: 6 3/4 in.	
Depth of Collector Zone Set		
Top Recorder Depth (Inside): 4759 ft.	Recorder Number: 0052 Cap: 5000 P.S.I.	
Bottom Recorder Depth (Outside): 4782 ft.	Recorder Number: 11048 Cap: 5100 P.S.I.	
Below Straddle Recorder Depth: ft.	Recorder Number: Cap: P.S.I.	
Mud Type: <b>CHEMICAL</b> Viscosity: 58	Drill Collar Length: 616 ft. I.D.: 2 1/4 in.	
Weight: 9.25 Water Loss: 9.2 cc.	Weight Pipe Length: 0 ft. I.D.: 2 7/8 in.	
Chlorides: 4300 P.P.M.	Drill Pipe Length: 4128 ft. I.D.: 3 1/2 in.	
Jars/Make: <b>STIKLING</b> Serial Number: <b>B/SP</b>	Test Tool Length: 33 ft. Tool Size: 3 1/2-4F in.	
Did Well Flow? <b>NA</b> Revised Out: <b>NA</b>	Anchor Length: 6 ft. Size: 4 1/2-FH in.	
Main Hole Size 7 7/8	Tool Joint Size 4 1/2 in	
Surface Choke Size 7 in	Bottom Choke Size 5/8 in	
Blow 1st Open: <b>NO BLOW</b>	Flush Tool (Didn't Help) Test Terminated	
2nd Open:		
Recovered 1 ft. of M	100% M	
Recovered ft. of		
Recovered ft. of		
Recovered ft. of		
Recovered ft. of	Price Job	
Recovered ft. of	Other Charges	
Remarks: Tool Sample: 100% M	Insurance	
	Total	
Time Set Packer(s) 8:51 PM Aug 17 A.M.	Time Started Off Bottom 9:30 PM Aug 17 P.M.	Maximum Temperature 113
Initial Hydrostatic Pressure (A)	2341 P.S.I.	
Initial Flow Period (B) Minutes	11	P.S.I. to (C) 14 P.S.I.
Initial Closed In Period (D) Minutes	10	P.S.I.

Time Set Packer(s)	8:51 PM Aug 17	A.M. P.M.	Time Started Off Bottom	9:30 PM Aug 17	A.M. P.M.	Maximum Temperature	113
Initial Hydrostatic Pressure	(A)			2341 P.S.I.			
Initial Flow Period	Minutes	(B)		11 P.S.I. to (C)		14 P.S.I.	
Initial Closed In Period	Minutes	(D)		P.S.I.			
Final Flow Period	Minutes	(E)		P.S.I. to (F)		P.S.I.	
Final Closed In Period	Minutes	(G)		P.S.I.			
Final Hydrostatic Pressure	(H)			2341 P.S.I.			

Diamond Testing shall not be liable for damages of any kind to the property or personnel of the owner for which a test is made or for any loss suffered or sustained, directly or indirectly, through the use of its equipment, or its statement or opinion concerning the result of any test. Tools and materials damaged in the hole shall be paid for at cost by the party where the test is made.



**DIAMOND TESTING**  
 P.O. Box 157  
 HOISINGTON, KANSAS 67544  
 (800) 542-7313  
**DRILL-STEM TEST TICKEY**  
 FILE: Lens Mai 3-28 Oct 1

TIME ON: 11:50  
 TIME OFF: 23:27

Company **Berexco LLC** Lease & Well No. **Lens Mai 3-28**  
 Contractor **Baredco Drilling** Charge to **Berexco LLC**  
 Elevation **2852** Formation **Morrow Sand** Effective Pay \_\_\_\_\_ Ft. Ticker No. **RR068**  
 Date **08/18/2014** Sec **28** Twp. **28 S Range** **32 W County** **Finley State** **KANSAS**  
 Test Approved By **Ian Bosmaier** Diamond Representative **RICKY RAY**

Formation Test No. **4** Interval Tested from **4779 ft. to 4795 ft.** Total Depth **4795 ft.**  
 Packer Depth **4774 ft.** Size **6 3/4 in.** Packer depth \_\_\_\_\_ ft. Size **6 3/4 in.**  
 Packer Depth **4779 ft.** Size **6 3/4 in.** Packer depth \_\_\_\_\_ ft. Size **6 3/4 in.**

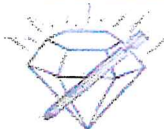
Depth of Selective Zone Set  
 Top Recorder Depth (Inside) **4761 ft.** Recorder Number **0062** Cap. **5000 P.S.I.**  
 Bottom Recorder Depth (Outside) **4782 ft.** Recorder Number **5054** Cap. **5000 P.S.I.**  
 Below Straddle Recorder Depth \_\_\_\_\_ ft. Recorder Number \_\_\_\_\_ Cap. \_\_\_\_\_ P.S.I.  
 Mud Type **CHEMICAL** Viscosity **58** Drill Collar Length **816 ft.** I.D. **2 1/4 in.**  
 Weight **9.25** Water Loss **9.2 cc.** Weight Pipe Length **0 ft.** I.D. **2 7/8 in.**  
 Choke/Size **4300 P.P.M.** Drill Pipe Length **4130 ft.** I.D. **3 1/2 in.**  
 Jars: Make **STERLING** Serial Number **8/SP** Test Tool Length **33 ft.** Tool Size **3 1/2 in.**  
 Did Well Flow? **NA** Revised Out **NA** Anvils Length **16 ft.** Size **4 1/2 in.**  
 Main Hole Size **7 7/8** Tool Joint Size **4 1/2 in.** Surface Choke Size **1 in.** Bottom Choke Size **5/8 in.**

Blow: 1st Open 1" **Blow BOB in 2 1/2 mins 3 1/2 bb**  
 2nd Open **NO Blow built to 1/4 in 60 mins NOBB**

Recovered **121 ft. of GIP**  
 Recovered **30 ft. of D 100% O 27 @ 60 Deg**  
 Recovered **372 ft. of GC w/ HWM 6% G 10% O 34% W 50% M**  
 Recovered **165 ft. of SLGO w/ WCM 4% G 4% O 10% W 82% M**  
 Recovered **589 ft. of Total Fluid** RW: **12 @ 72 Deg** Price Job \_\_\_\_\_  
 Recovered \_\_\_\_\_ ft. of \_\_\_\_\_ Chlorides: **80,000ppm** Other Charges \_\_\_\_\_  
 Remarks: \_\_\_\_\_ Ph: **7** Insurance \_\_\_\_\_  
 Tool Sample: **2% G 8% O 65% W 25% M** Total \_\_\_\_\_

Time Set Packer(s)	2:49 PM	A.M. P.M.	Time Started Off Bottom	7:19 PM	A.M. P.M.	Maximum Temperature	115
Initial Hydrostatic Pressure	(A)			2311 P.S.I.			
Initial Flow Period	Minutes	(B)		153 P.S.I. to (C)		280 P.S.I.	
Initial Closed In Period	Minutes	(D)		261 P.S.I.			
Final Flow Period	Minutes	(E)		261 P.S.I. to (F)		281 P.S.I.	
Final Closed In Period	Minutes	(G)		282 P.S.I.			
Final Hydrostatic Pressure	(H)			2302 P.S.I.			

Diamond Testing shall not be liable for damages of any kind to the property or personnel of the owner for which a test is made or for any loss suffered or sustained, directly or indirectly, through the use of its equipment, or its statement or opinion concerning the result of any test. Tools and materials damaged in the hole shall be paid for at cost by the party for whom the test is made.



**DIAMOND TESTING**  
 P.O. Box 157  
 HOISINGTON, KANSAS 67544  
 (800) 542-7313  
**DRILL-STEM TEST TICKET**  
 FILE: Lens Mai 3-29 Det 5

TIME ON: 10:55  
 TIME OFF: 21:29

Company **Berexco LLC** Lease & Well No. **Lens Mai 3-29**  
 Contractor **Beredco Drilling** Charge to **Berexco LLC**  
 Elevation **2852** Formation **St. Louis** Effective Pay \_\_\_\_\_ Ft. Ticket No. **RR009**  
 Date **08/19/2014** Sec. **28** Twp. **23 S** Range **32 W** County **Finney** State **KANSAS**  
 Test Approved By **Ran Bodmeijer** Division Representative **RICKY RAY**

Formation Test No. **S** Interval Tested from **4803 ft. to 4830 ft.** Total Depth **4830 ft.**  
 Packer Depth **4785 ft.** Size **6 3/4 in.** Packer depth \_\_\_\_\_ ft. Size **6 3/4 in.**  
 Packer Depth **4806 ft.** Size **6 3/4 in.** Packer depth \_\_\_\_\_ ft. Size **6 3/4 in.**

Depth of Selective Zone Set  
 Top Recorder Depth (Inside) **4785 ft.** Recorder Number **9062** Cap **5000 P.S.I.**  
 Bottom Recorder Depth (Outside) **4808 ft.** Recorder Number **5954** Cap **5000 P.S.I.**  
 Below Stretcher Recorder Depth \_\_\_\_\_ ft. Recorder Number \_\_\_\_\_ Cap \_\_\_\_\_ P.S.I.

Mud Type **CHEMICAL** Viscosity **68** Drill Collar Length **616 ft.** I.D. **2 1/4 in.**  
 Weight **9.25** Water Loss **10.4 cc.** Weight Pipe Length **0 ft.** I.D. **2 7/8 in.**  
 Chlorides **5100 P.P.M.** Drill Pipe Length **4154 ft.** I.D. **3 1/2 in.**  
 Jars: Make **STERLINGS** Serial Number **8/SP** Test Tool Length **33 ft.** Tool Size **3 1/2-4 in.**  
 Did Well Flow? **NA** Reversed Out **NA** Archer Length **27 ft.** Size **4 1/2-4 in.**  
 Main Hole Size **7 7/8** Tool Joint Size **4 1/2 in.** Surface Choke Size **7 in.** Bottom Choke Size **5/8 in.**

Flow **1st Oper: WSB** **Blow Died in 2 mins** **NOBB**  
**2nd Oper: NO Blow** **NOBB**

Recovered \_\_\_\_\_ ft. of \_\_\_\_\_ **100% M**  
 Recovered \_\_\_\_\_ ft. of \_\_\_\_\_  
 Recovered \_\_\_\_\_ ft. of \_\_\_\_\_  
 Recovered \_\_\_\_\_ ft. of \_\_\_\_\_  
 Recovered \_\_\_\_\_ ft. of \_\_\_\_\_  
 Recovered \_\_\_\_\_ ft. of \_\_\_\_\_

Remarks: **Tool Sample: 100% M** **Few Oil Specs**  
 Price Job \_\_\_\_\_  
 Other Charges \_\_\_\_\_  
 Insurance \_\_\_\_\_  
 Total \_\_\_\_\_

Time Set Packets) **1:51 PM** **A.M.** Time Started Off Bottom **5:46 PM** **A.M.** Maximum Temperature **112**  
 P.M. P.M.  
 Initial Hydrostatic Pressure \_\_\_\_\_ (A) **2299 P.S.I.**  
 Initial Flow Period \_\_\_\_\_ Minutes **30** (B) **10 P.S.I. to (C)** **14 P.S.I.**  
 Initial Closed In Period \_\_\_\_\_ Minutes **60** (D) **290 P.S.I.**  
 Final Flow Period \_\_\_\_\_ Minutes **45** (E) **14 P.S.I. to (F)** **31 P.S.I.**  
 Final Closed In Period \_\_\_\_\_ Minutes **120** (G) **251 P.S.I.**  
 Final Hydrostatic Pressure \_\_\_\_\_ (H) **2299 P.S.I.**

Diamond Testing shall not be liable for damages of any kind to the property or persons of the user for which a hole is made or for any loss, injury or sustained, direct or indirect, through the use of its equipment, or its installation or operation concerning the result of any test. Tests not designed in the order shall be paid for as cost by the party who ordered the test.

**ROCK TYPES**

- |  |              |  |              |  |                |  |                 |
|--|--------------|--|--------------|--|----------------|--|-----------------|
|  | <b>Anhy</b>  |  | <b>Gyp</b>   |  | <b>Shgy</b>    |  | <b>Sandy</b>    |
|  | <b>Bent</b>  |  | <b>Igne</b>  |  | <b>Sltst</b>   |  | <b>Shale</b>    |
|  | <b>Brec</b>  |  | <b>Lmst</b>  |  | <b>Ss</b>      |  | <b>Sltstn</b>   |
|  | <b>Cht</b>   |  | <b>Meta</b>  |  | <b>Till</b>    |  | <b>Shlyslts</b> |
|  | <b>Clyst</b> |  | <b>Mrlst</b> |  | <b>Carb sh</b> |  | <b>Sltsh</b>    |
|  | <b>Coal</b>  |  | <b>Salt</b>  |  | <b>Dol</b>     |  | <b>Lms</b>      |
|  | <b>Congl</b> |  | <b>Shale</b> |  | <b>Dtd</b>     |  |                 |
|  | <b>Dol</b>   |  | <b>Shcol</b> |  | <b>Gry sh</b>  |  |                 |

**ACCESSORIES**

**FOSSIL**

- Algae
- Amph
- Belm
- Bioclst
- Brach
- Bryozoa
- Cephal
- Coral
- Crin
- Echin
- Fish
- Foram
- Fossil
- Gastro
- Oolite
- Ostra
- Pelec
- Pellet
- Pisolite
- Plant
- Strom
- Fuss
- Oomold

**MINERAL**

- Anhy
- Arggrm
- Arg
- Bent
- Bit
- Breclrag
- Calc
- Carb
- Chtdk
- Chtit
- Dol
- Feldspar
- Ferrpel
- Ferr
- Glau
- Gyp
- Hvymin
- Kaol
- Mari
- Minxl
- Nodule
- Phos
- Pyr

- Salt
- Sandy
- Silt
- Sil
- Sulphur
- Tuff
- Chlorite
- Dol
- Sand
- Sity

- Dol
- Grysh
- Gyslt
- Lms
- Sandylms
- Sh
- Sltstn

**STRINGER**

- Anhy
- Arg
- Bent
- Coal
- Dol
- Gyp
- Ls
- Mrst
- Sltstrg
- Ssstrg
- Carbsh
- Clystn

**TEXTURE**

- Boundst
- Chalky
- Cryxin
- Earthy
- Finexln
- Grainst
- Lithogr
- Microxln
- Mudst
- Packst
- Wackest

**OTHER SYMBOLS**

**INTERVALS**

- Core
- Dst

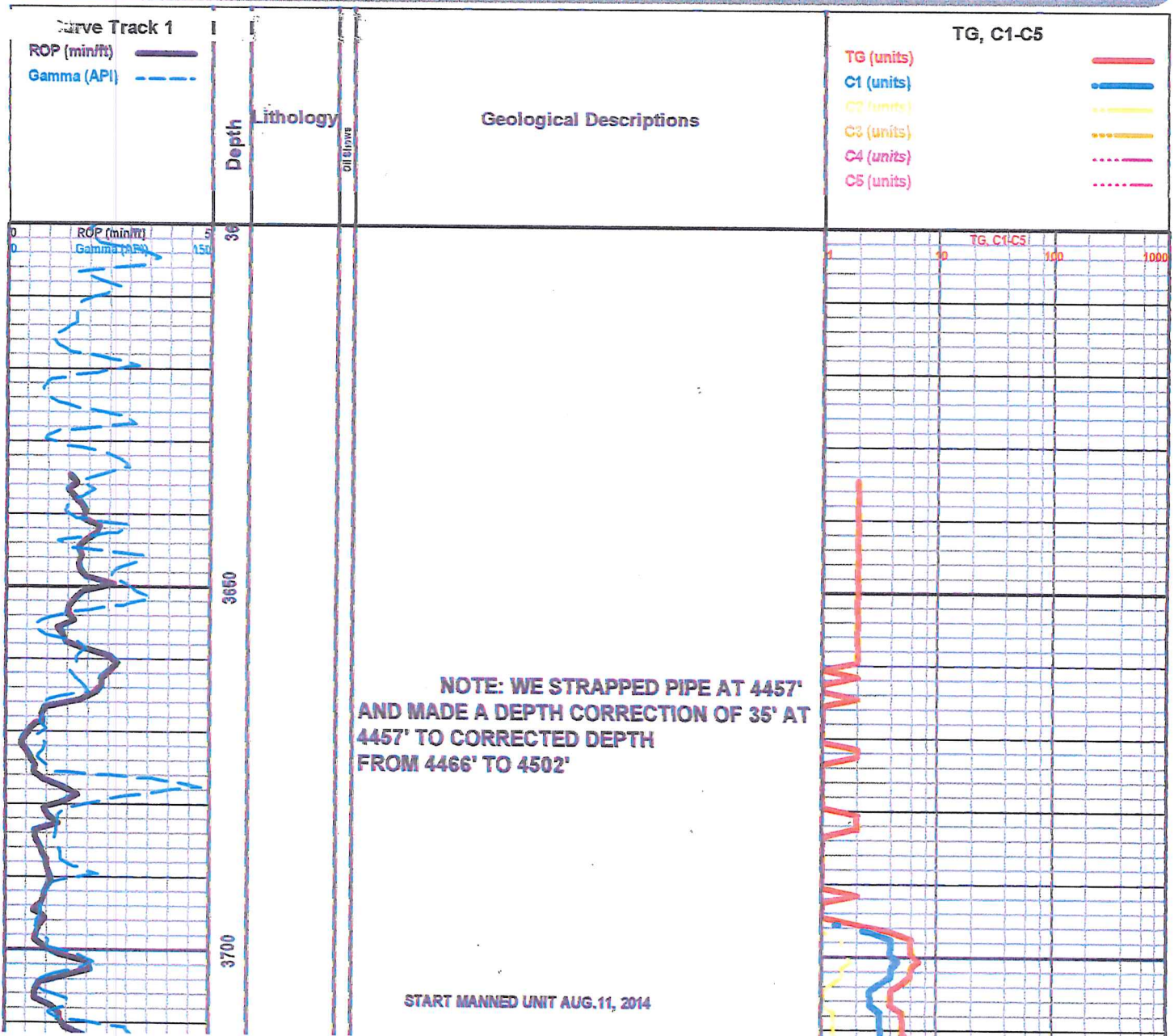
- Dst

**OIL SHOWS**

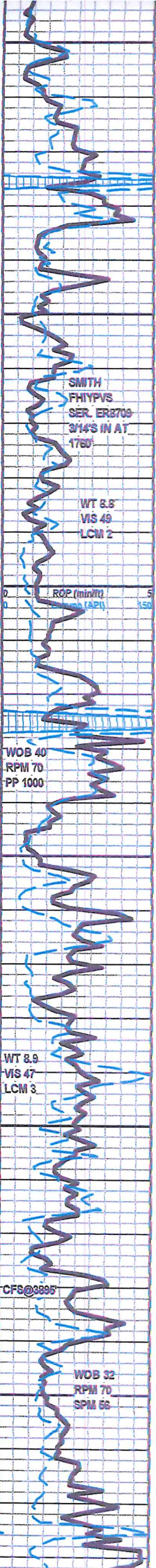
- Even
- Spotted

**Ques**

- Dead
- Gas show



START MANNED UNIT AUG.11, 2014



LS-CRM LT TN TN- HD V BRITT, MD-F-XLN, V RE-XLN MTRX, SMLL IMBD FOSS FRGS THRU, SMLL CALC XLS IMBD IP, TR MD SCAT IMBD OOL IP, LT YEL MIN FLO IP, PR VIS INTER-XLN INTER-FOX POR IP, NO VIS SHOW OR CUT

LS-OFF WHT CRM BFF- HD TO BRITT, MD-F-XLN RE-XLN MTRX, SCAT IMBD FOSS FRGS IP, LT TN TO WHT CHRT, SLI TR FRM WHT CHLK IP, LT YEL MIN FLO, NO VIS POR, NO VIS CUT OR SHOW

LS-OFF WHT WHT CRM - HD IP TO W SFT IP, V FRM TO SFT CHLKY MTRX, SLI TR FOSS FRGS IP, LT YEL MIN FLO IP, NO VIS POR, NOP VIS SHOW

HEEBNER 3825' - 971'

SH-BLK SFT CARB

TORONTO 3839' - 985'

3839-3862 LS-CRM BFF- HD BRITT - V SUCRO MTRX TO SUCRO S-CHLKY, ABDT FRM TO SFT WHT CHLK IP THRU, SLI TR FOSS FRGS IMBD IP, LT YEL MIN FLO, NO VIS POR NO VIS SHOW OR CUT

LANSING "A" 3871' -1017'

3872-3878 LS-OFF WHT CRM BFF- HD DNS TO BRITT, MD-XLN IP TO V SUCRO MTRX, ABDT SCAT FRM WHT CHLK, SMLL TO MD CALC XLS IMBD IP, ABDT IMBD ANG LM GRNS, LT YEL MIN FLO SCAT, PR VIS MICRO PP OR IP, NO VIS SHOW OR CUT

LS-CRM BFF LT TN - HD DNS TO TR BRITT, MD-FXLN RE-XLN IP, TR FOSS FRGS IP, WHT CHRT IP, LT YEL MIN FLO, NO VIS POR, NO VIS SHOW OR CUT

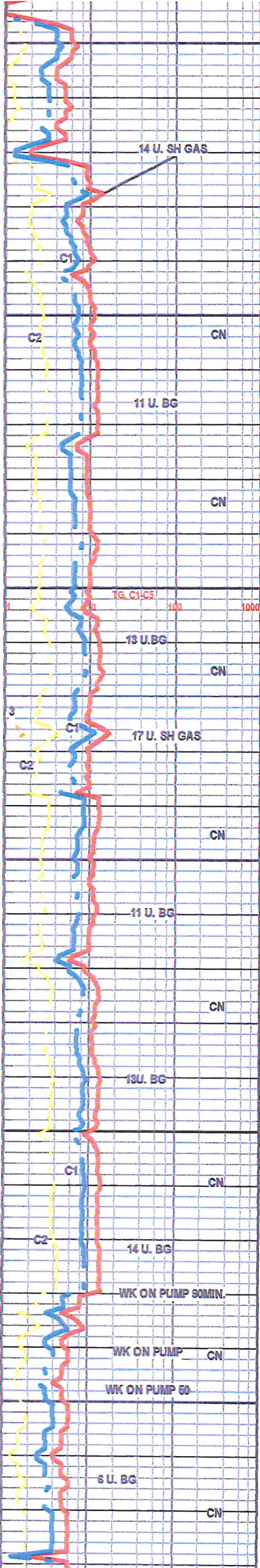
LANSING "B" 3917' -1063'

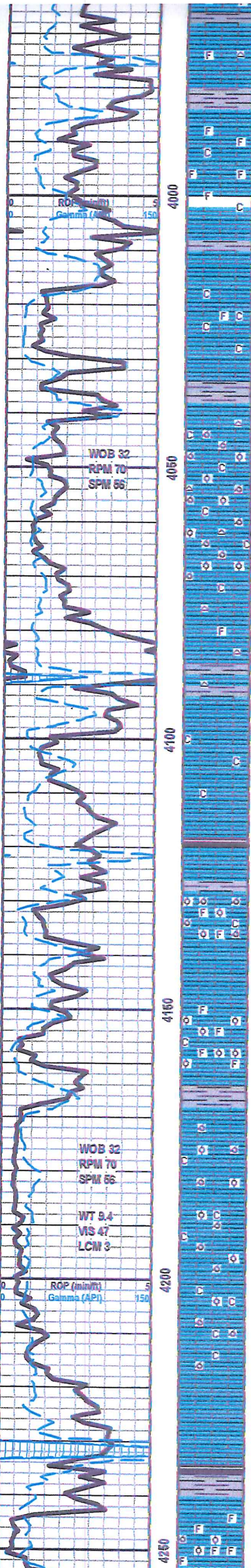
3917-3927 LS-OFF WHT CRM- HD IP TO FRM - MD-XLN IP, SLI TR FOSS FRGS IP TO ABDT FRM TO SFT WHT CHLK THRU, DLL YEL MIN FLO IP, NO VIS POR, NO VIS SHOW OR CUT

LANSING "C" 3939' - 1085'

3939-3962 LS-CRM BFF HD DNS IP TO V BRITT, MD-XLN RE-XLN MTRX TO V TT SUCRO IP, S-CHLKY TO CHLKY IP, DLL YEL MIN FLO SCAT IP TO NO FLO, SCAT PR MICRO PP POR IP, NO VIS SHOW OR CUT

LS-CRM LT TN - HD DNS F-W/F- XLN RE-XLN IP, SLI TR FOSS FRGS SCAT THRU, TR WHT LT TN CHRT, TR IMBD LT GY SH IP, DLL YEL MIN FLO IP, NO VIS POR, NO VIS CUT OR SHOW





LS-CRM LT TN - HD DNS F-WF-XLN RE-XLN IP, SLI TR FOSS FRGS SCAT THRU, TR WHT LT TN CHRT, TR IMBD LT GY SH IP, DLL YEL MIN FLO IP, NO VIS POR, NO VIS CUT OR SHOW

**LANSING "D" 3986' - 1132'**

3986-3993' LS-CRM LT TN TN - HD DNS TO BRITT, MD-XLN, W RE-XLN MTRX, ABTD IMBD FOSS AND FOSS FRGS THRU, SLI TR IMBD WHT CHLK, TR IMBD SMLL CALC XLS IP, DLL YEL MIN FLO IP, NO VIS POR, NO VIS SHOW OR CUT

4017 - 4028' LS-OFF WHT TO CRM-MD HD TO FRM IP, W SUCRO TO SUCRO S-CHLKY MTRX, ABTD IMBD FRM TO SFT WHT CHLK, SLI TR FOSS FRGS IP, WVDLL YEL MIN FLO IP, NO VIS POR, NO VIS SHOW OR CUT

SH-LT TO MD GY FRM BLKY SMTH WXY TXT

4041' - 4067' LS-CRM LT TN TO OFF WHT - HD W BRITT, MD-XLN, W RE-XLN MTRX, W FOSS, W OOLMLD THRU, SCAT IMBD SMLL TO MD OOL THRU, ABTD IMBD FRM TO SFT WHT CHLK SCAT THRU, TR WHT REWRKD CHRT, BRIT YEL GLD FLO SCAT THRU, PR TO FR VIS OOLMLD POR SCAT THRU, PR SCAT INTER-FOSS POR IP, NO VIS CUT OR SHOW

LS-LT TN TN LT GY-HD DNS, WF-CRYPTO-XLN, RE-XLN IP, IMBD FOSS FRGS IP, TN WHT CHRT IP, TR IMBD SH IP, LT BRIT YEL MIN FLO IP, NO VIS POR, NO VIS SHOW

**LANSING "G" 4088' - 1234'**

4088' - 4109' LS-CRM LT TN - HD DNS IP TO BRITT, F-XLN IP TO SUCRO S-CHLKY MTRX, HVY TR ABTD FRM TO SFT WHT CHLK, DLL YEL MIN FLO, SCAT PR VUG POR IP, NO VIS CUT OR SHOW

**"H" 4120' - 1266'**

4129' - 4137' LS-CRM LT TN - HD W BRITT, MD-XLN W RE-XLN MTRX, ABTD IMBD FOSS FRGS THRU, SCAT IMBD SMLL TO MD OOL, W OOLMLD, TR IMBD CHLKY OOL, SMLL TO MD CALC XLS IMBD THRU, LT BRIT YEL MIN FLO SCAT THRU TO DLL YEL MIN FLO IP, PR TO FR TO TR GD OOLMOLD POR SCAT THRU, PR

4162' - 4169' LS- TN DK TN - HD V. BRITT, MD-F-XLN, RE-XLN MTRX, W MICRO OOL THRU, W FOSS THRU, SMLL VRGTD CALC XLS IP, SLI TR WHT CHLK IP, W DLL YEL MIN FLO THRU, PR VIS INT-OOL POR IP, NO VIS CUT OR SHOW

**"I" 4167' - 1313'**

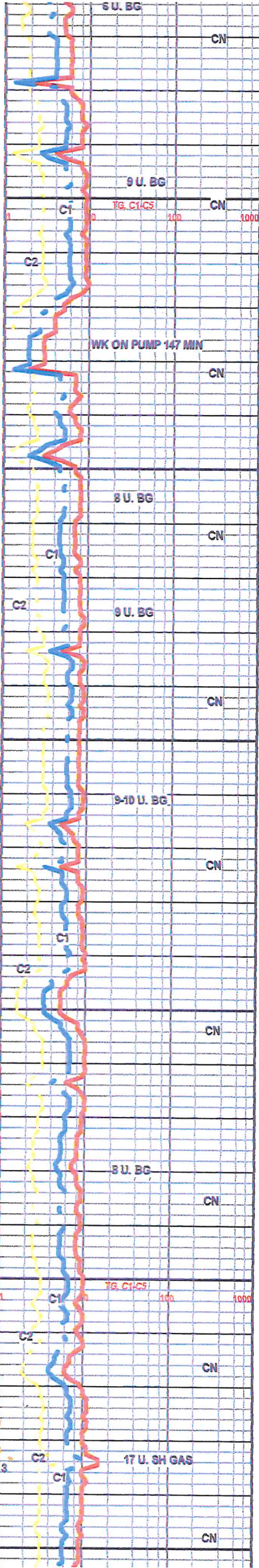
4167-4209' LS-CRM BFF - HD W BRITT, MD-F-XLN, W RE-XLN MTRX, W MICRO OOLMLD TO OOLMLD THRU, SCAT IMBD SMLL TO MD OOL, TR FOSS FRGS SCAT THRU, ABTD IMBD SFT WHT CHLK IP, HVY TR ABTD SFT WHT FREE CHLK IP, DLL YEL MIN FLO THRU, TR SCAT BRIT YEL MIN FLO IP, GD TO W GOOD OOLMLD POR THRU, PR TO FR VIS MICRO VUG POR SCAT IN 40%, NO VIS CUT OR SHOW

LS-CRM LT TN TN - HD DNS W TT SUCRO MTRX TO F-XLN IP, SLI TR IMBD SMLL OOL, TR SMLL CALC XLS IP BRIT YEL MIN FLO IP, NO VIS POR, NO VIS SHOW OR CUT

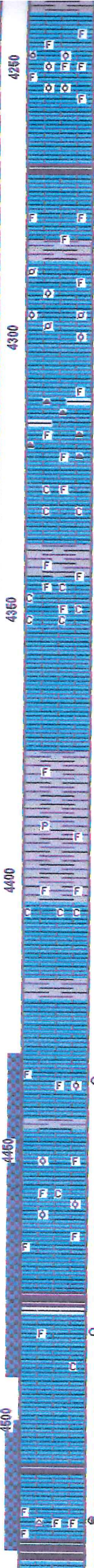
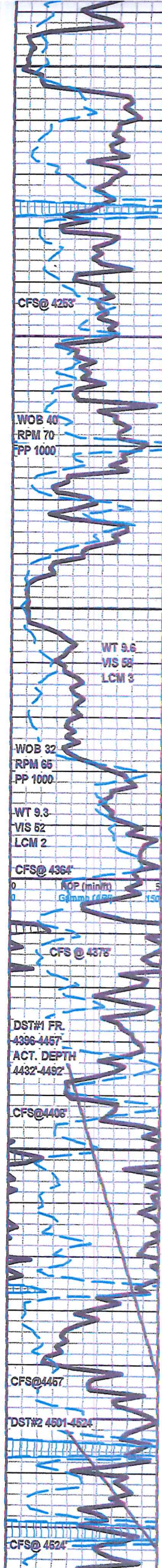
**KANSAS CITY "A" 4236' - 1382'**

SH-BLK SFT CARB

4243' - 4254' LS-OFF WHT CRM BFF, HD W BRITT MD-XLN, W RE-XLN MTRX, ABTD IMBD FOSS THRU, SCAT IMBD SMLL TO MD OOL, TR OOL MLD IP, IMBD MD CALC XLS IP, HVY TR IMBD SFT







4243'-4254' LS-OFF WHT CRM BFF, HD W BRITT MD-XLN, VI RE-XLN MTRX, ABDT IMBD FOSS THRU, SCAT IMBD SMLL TO MD OOL, TR OOL MLD IP, IMBD MD CALC XLS IP, HVY TR IMBD SFT WHT CHLK IP, VI DLL YEL SPTTD MIN FLO IP, TR BRIT YEL MIN FLO IP, PR INTER-FOSS POR SCAT THRU, PR VIS MICRO VUG POR IP, TR PR OOLMLD POR IP, NO VIS SHOW OR CUT

**KANSAS CITY "B" 4269' - 1415'**

4274'-4281' LS-CRM LT TN TN - HD TO BRITT, MD-XLN RE-XLN MTRX, FOSS FRGS SCAT THRU, SMLL CALC XLS IMBD IP, SLI SUCRO IP, SLI TR IMBD SFT CHLK IP, BRIT YEL GLD FLO THRU, TR PR INTER-FOSS POR IP, NO FLN CUT, W PR RING CUT ON DISH

4283'-4300' LS-CRM LT TN TN - HD DNS TR BRITT, MD-F-XLN, ABDT IMBD PELT, SCAT IMBD SMLL TO MD OOL, TR FOSS FRGS IP, DLL YEL GLD SPTTD FLO IP, NO VIS POR, NO VIS SHOW

4300'-4312' LS-OFF WHT CRM-HD TO BRITT, VI TT SUCRO MTRX, SLI S-CHLKY IP, TR PHNTM FOSS FRGS IP, TN BRN CHRT, DLL YEL MIN FLO IP, N VIS POR, NO VIS SHOW OR CUT

4313'-4326' LS-GY DK GY-HD DNS WIF-CRYPTO-XLN, MOTT, IMBD FOSS FRGS IP, ABDT IMBD GY DK GY CHRT, IMBD DISS SH IP, NO FLO, NO VIS POR, NO VIS SHOW

4325'-4334' LS-OFF WHT CRM, FRM TO SFT, VI SUCRO S-CHLKY TO CHLKY MTRX, SLI TR FOSS FRGS IP, TR DLL YEL MIN FLO, NO VIS POR, NO VIS CUT

4343'-4355' -LS- HD DNS IP TO VI FRM, MD-XLN S-CHLKY IP GRDNG TO ABDT FRM TO SFT WHT CHLK, FOSS FRGS IMBD IP, VI DLL YEL MIN FLO IP TO NO FLO, NO VIS POR, NO VIS SHOW OR CUT

**BKC 4366' - 1512'**

LS-CRM LT TN TN - HD DNS TO SLI TR BRITT IP, MD-F-XLN, IMBD FOSS FRGS IMBD IP, SLI S-SUCRO IP, TR DISS PYR IP, TR IMBD LT GY SH IP, LT YEL MIN FLO, NO VIS POR, NO VIS SHOW

SH-LT TO MD GY-W SFT GMMY TX TO FRM BLKY SMTH TXT, GRDNG TO GREEN FRM BLKY SMTH WXT TXT

**MARMATON 4403' - 1549'**

4403'-4405' LS-CRM BFF OFF WHT-F-VF-XLN, RE-XLN IP, IMBD FOSS FRGS IP, SLI TR SMLL CALC XLS IP, ABDT FRM TO VI SFT CHLK IP, LT BRIT YEL MIN FLO IP TO DLL YEL FLO IP, NO VIS POR, NO VIS CUT OR SHOW

SH-LT TO MD GY - FRM BLKT SMTH TXT, SLI CALC

**MARMATON "B" 4422' - 1568'**

4433-4441-LS-LT TN LT BRN ( DUE TO LT BRN OIL STN IN 30%) HD DNS TO BRITT IP, MD-XLN TO SLI SUCRO IP, IMBD FOSS FRGS IP, TR MICRO OOL IP, BRIT YEL GLD FLO IN 30%, BRIT MIN FLO IP, SLI TR PR INTER-XLN POR, WK TO FR FLN CUT IN 10%, FR SLO STRM CUT IN 30%, NO ODOR, NO STAIN ON DISH

LS-CRM LT TN-HD DNS SLI TR BRITT, MD-F-XLN, RE-XLN IP, ABDT IMBD FOSS, FOSS FRGS, TR SMLL OOL IMBD IP, TR SFT CHLK IP, DLL YEL MIN FLO IP, NO VIS POR, NO VIS SHOW OR CUT

**PAWNEE 4477' - 1623'**

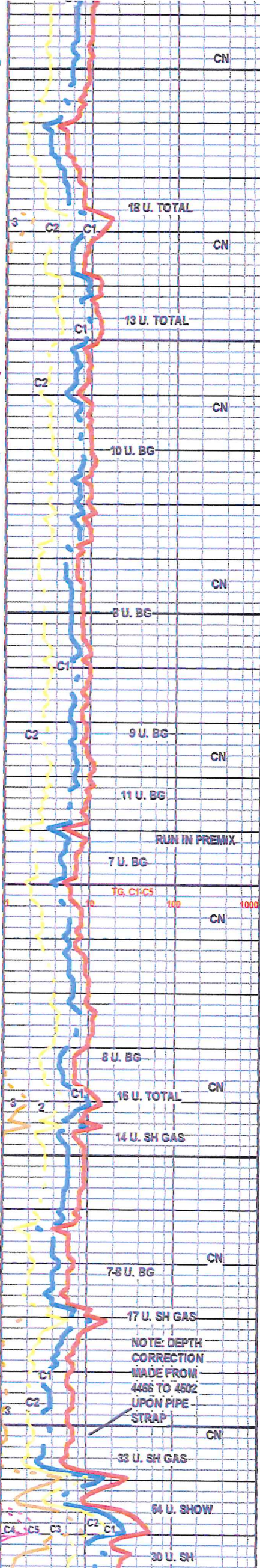
SH-BLK SFT CARB

4582'-4590' LS-CRM TN OFF WHT- HD DNS IP TO BRITT, MD-F-XLN, RE-XLN, IMBD ANG LM GRNS IP, TR IMBD FOSS IP, SMLL TO MD CALC XLS IMBD IP, GRDNG TO SUCRO S-CHLKY IP, LT BRIT YEL MIN FLO THRU, TR DLL YEL GLD FLO IP, TR INTER-XLN POR IP, NO FLN CUT, VI LT RING CUT ON DISH

**FT. SCOTT 4510' - 1656'**

SH- BLK SFT CARB

LS-CRM LT TN ( LT TN STN IP) - HD W BRITT- MD-XLN TO SUCRO IP, ABDT IMBD FOSS FRGS IP, ABDT SCAT FREE FOSS, TR LT TN CHRT IP, FRM WHT CHLK IP, DLL YEL GLD FLO IN 30%, BRIT YEL MIN FLO IP, PR TO TR FR VIS INTER-FOSS POR IP, LT FLN CUT TO FR SLO STRM CUT NO ODOR



18 U. TOTAL

13 U. TOTAL

10 U. BG

8 U. BG

9 U. BG

11 U. BG

RUN IN PREMIX

7 U. BG

16 U. TOTAL

14 U. SH GAS

8 U. BG

16 U. TOTAL

14 U. SH GAS

7-8 U. BG

17 U. SH GAS

NOTE: DEPTH CORRECTION MADE FROM 4466 TO 4502 UPON PIPE STRAP

33 U. SH GAS

64 U. SHOW

30 U. SH

LS-CRM LT TN (LT TN STN IP) - HD V BRITT - MD-XLN TO SUCRO IP, ABDT IMBD FOSS FRGS IP, ABDT SCAT FREE FOSS, TR LT TN CHRT IP, FRM WHT CHLK IP, DLL YEL GLD FLO IN 30%, BRIT YEL MIN FLO IP, PR TO TR FR VIS INTER-FOSS POR IP, LT FLSH CUT TO FR SLO STRM CUT, NO ODOR

**CHEROKEE 4526' -1672'**

LS- WHT CRM GY, HD TO TR SFT, F-XLN TO SLI SUB-CHLKY IP, IMBD FOSS FRAG IP, V SHLY IP, FRM CHLK IP, TR WHT CHRT, DLL YEL MIN FLO IN 20%, NO VIS POR, NO SHOW

LS- WHT GY CRM, HD DNS, TR BRITT, F-XLN, SUB-CHLKY, TR RE-XLN, ARG TO SHLY, IMBD FOSS FRAG IP, TR SFT WHT CHLK, DLL YEL MIN FLO IN 20%, NO VIS POR, NO SHOW

LS- CRM TN, HD DNS, MOTT, F-XLN TO MD XLN IP, V SHLY IP, TR IMBD FOSS FRAG, TR CHRT IN TRAY, DLL YEL MIN FLO IN 10%, NO VIS POR, NO SHOW

LS- CRM TN OFF WHT, HD DNS, F-XLN TO SUB-CHLKY, TR WHT CHRT IN TRAY, TR IMBD OOL, TR IMBD PYR, DLL YEL MIN FLO IN 10%, NO VIS POR, NO SHOW

**ATOKA 4608' -1754'**

LS- OFF WHT TO TN, HD DNS TO TR BRITT, FN-MD XLN, SUB-CHLKY IP, TR FOSS FRAG, DLL YEL MIN FLO IN 20%, NO VIS POR, NO SHOW

LS- CRM TN TO OFF WHT, (SPTD BLK TAR STN 1%), HD TO BRITT, CRYPTO-FN XLN, TR RE-XLN, SCAT CHRT IN TRAY, TR SFT WHT CHLK, IMBD & FREE FOSS, DLL YEL MIN FLO IN 10%, NO VIS CUT

LS- CRM TO TN, OFF WHT IP, HD TO BRITT, CRYPTO- FN XLN, TR RE-XLN, TR IMBD FOSS FRAG, TR CRM TO TN CHRT IN TRAY, FRM TO SFT CHLK IP, DLL YEL MIN FLO IN 10%, NO VIS POR, NO SHOW

LS- CRM TN TO OFF WHT, HD DNS, F-XLN TO SLI SUB-CHLKY, ARG TO SHLY IP, TR TN CHRT IN TRAY, TR FOSS FRAG, FRM TO SFT CHLK IP, DLL YEL MIN FLO IN 20%, NO VIS POR, NO SHOW

**MORROW 4690' -1836'**

SH- GRN TO GY, BLK IP, SFT GMMY FRM IP, SMTH TO SLI SLTY TXT

SS- GY TO FRSTY, HD TT, DNS, WPR FRI IP, FN-MD GRN, S-RND GRNS, ABDT CALC CMNT, GLAUC IP, V SLTY TO SHLY IP, PR INTER-GRN POR IP, NO VIS CUT OR SHOW

SH- GRN TO GY, TR BLK, FRM TO SFT GMMY, TR IMBD F-GRN QRTZ, SLI SLTY IP, TR CHLKY LS, TR CHRT

LS- CRM TO TN, HD TO BRITT SFT IP, CRYPTO- FN XLN, ABDT GMMY SH IN TRAY, TR ABDT IMBD F-GRN QRTZ, TR IMBD FOSS FRAG, CRM TO TN CHRT IN TRAY, DLL YEL MIN FLO IN 10%, NO VIS POR, NO SHOW

SH- LT GY TO LT GRN, GMMY SFT, SMTH TO SLTY TXT

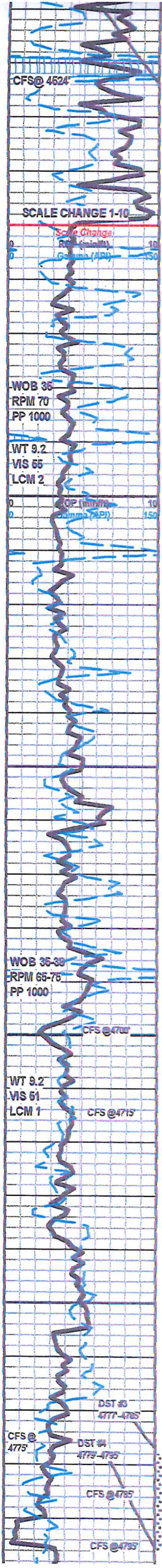
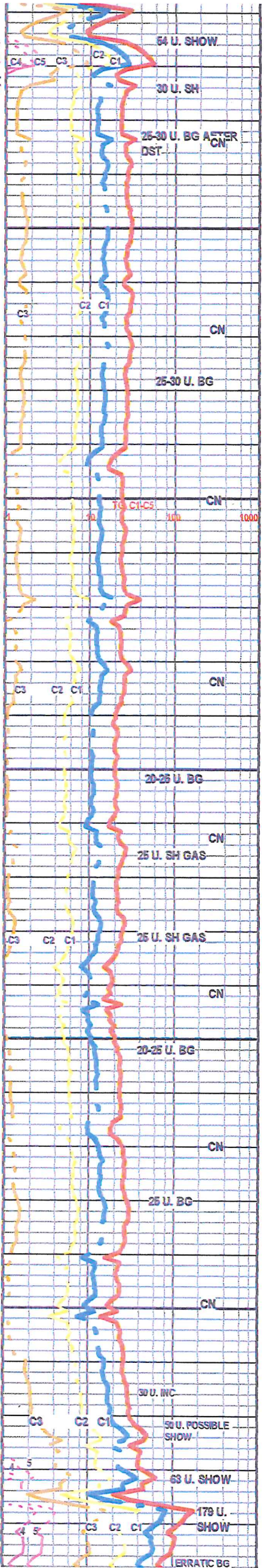
SS- GY TO FRSTY, HD TT, SLI FRI IP, FN-MD GRN, S-RND GRNS, ABDT CALC CMNT, GLAUC IP, TR PYR IP, V SLTY TO SHLY IP, WPR INTER-GRN POR IP, NO FLO, NO VIS CUT OR SHOW

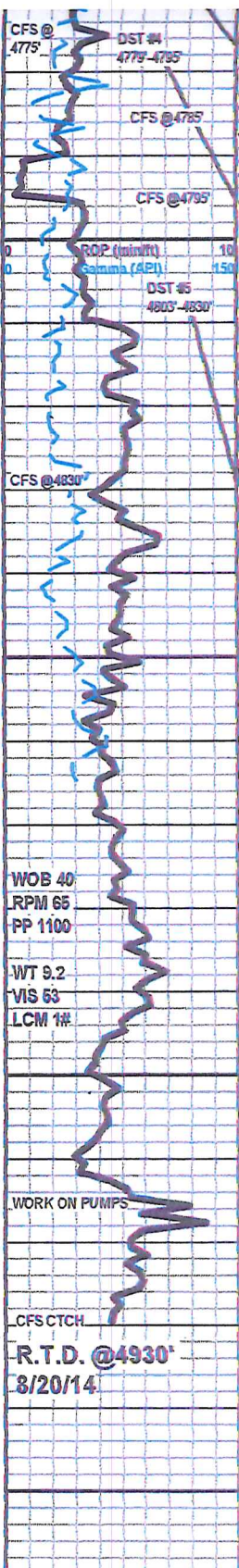
SH- LT GY, GMMY SFT, SMTH TO SLTY TXT

SS- GY TO FRSTY, HD TT, SLI FRI IP, FN-MD GRN, FR-WLL SRT, S-RND GRNS, ABDT CALC CMNT IP, TR PYR IP, V SLTY IP, FR- FR INTER-GRN POR IP, TR BRIT YEL FLD, WLT RING CUT, NO SLW STRM CUT

4730'-4735' SS- FRSTY TO LT TN (OIL STN IN 25%), LT GY IP, W FRI TO TR HD, UNCONSOLIDATED GRNS IP, FN-MD-CRS GRN, FR-FR SRT, S-RND GRNS, TR TO ABDT IMBD SLT, GLD FLO IN 20%, FR-GD INTER-GRN POR, GD FLSH CUT, GD SLW STRM CUT, LT TN LCH ON DISH, W GD ODOR

4730'-4735' SS- FRSTY LT GY TO LT TN, (DUE TO OIL STN IN 10%), W FRI TO FRM, UNCONSOLIDATED GRNS IP, F-MD-CRS GRN, FR SRT, S-RND GRNS, SHLY IP, LMINTD SH IP, SLI CHLKY IP, FR-GD INTER-GRN POR, FR-GD FLSH CUT, GD SLW STRM CUT 1.6D ODOR





ABDT CALC CMNT IP, TR PYR IP, WSLTY IP, PR-FR INTER-GRN POR IP, TR BRIT YEL FLO, WLT RING CUT, NO SLW STRM CUT

4760'-4790'SS- FRSTY TO LT TN (OIL STN IN 25%), LT GY IP, WFRI TO TR HD, UNCONSOLIDATED GRNS IP, FN-MD-CRS GRN, PR-FR SRT, S-RND GRNS, TR TO ABDT IMBD SLT, GLD FLO IN 20%, FR-GD INTER-GRN POR, GD FLSH CUT, GD SLW STRM CUT, LT TN LCH ON DISH, W GD ODOR

4790'-4795'SS- FRSTY LT GY TO LT TN, (DUE TO OIL STN IN 10%), WFRI TO FRM, UNCONSOLIDATED GRNS IP, F-MD-CRS GRN, FR SRT, S-RND GRNS, SHLY IP, LMNTD SH IP, SLI CHLKY IP, FR-GD INTER-GRN POR, FR-GD FLSH CUT, GD SLW STRM CUT, GD ODOR

**ST. LOUIS 4800' -1946'**

4800'-4810'LS- WHT TO DK TN, (DUE TO DRK BRN OIL STN IN 50%) BRITT SFT TO HD IP, SUB-CHLKY TO SLI RE-XLN, ABDT IMBD OOL IP, LRG CALC XLS IP, SPTTD BRIT YEL GLD FLO IN 25%, FR INTER-OOL POR IN 25%, GD FLSH CUT, GD MLKY BLUE SLW STRM CUT IN 25%, FR-GD ODOR

LS-OFF WHT TO CRM, HD DNS TO BRITT IP, FN-MD XLN, SUB-CHLKY IP, ABDT IMBD OOL IP, FRM TO SFT CHLK IP, DLL YEL MIN FLO IN 40%, NO VIS POR, NO SHOW

LS- WHT TO OFF WHT, HD DNS TO BRITT IP, FN-MD XLN, SUB-CHLKY IP, TR IMBD OOL, DLL YEL MIN FLO IN 10%, NO VIS POR, NO SHOW

LS- OFF WHT TO CRM, HD DNS TO BRITT IP, F-XLN TO SUB-CHLKY, TR WHT TO CRM CHRT IN TRAY, TR SFT WHT CHLK, DLL YEL MIN FLO IN 20%, NO VIS POR, NO SHOW

LS- OFF WHT TO CRM, TR LT TN, HD TO BRITT, DNS TO SUB-CHLKY IP, FN-MD XLN, TR RE-XLN, TR IMBD OOL, SFT WHT CHLK IP, TR WHT TO CRM CHRT IN TRAY, DLL YEL MIN FLO IN 10%, NO VIS POR, NO SHOW

LS- OFF WHT TO CRM, LT TN, HD DNS TO BRITT IP, F-XLN TO SLI SUB-CHLKY IP, TR RE-XLN, TR IMBD OOL, TR WHT CHRT IN TRAY, TR SFT WHT CHLK, DLL YEL MIN FLO IN 10%, NO VIS POR, NO SHOW

LS- OFF WHT TO CRM LT TN, HD TO BRITT, TR SFT, FN-MD XLN, SLI SUB- CHLKY IP, IMBD FOSS FRAG IP, TR SFT WHT CHLK, TR WHT TO CRM CHRT, TR IMBD QRTZ, DLL YEL MIN FLO IN 20%, NO VIS POR, NO SHOW

**LOGS: HALLIBURTON -LIBERAL,KS**

