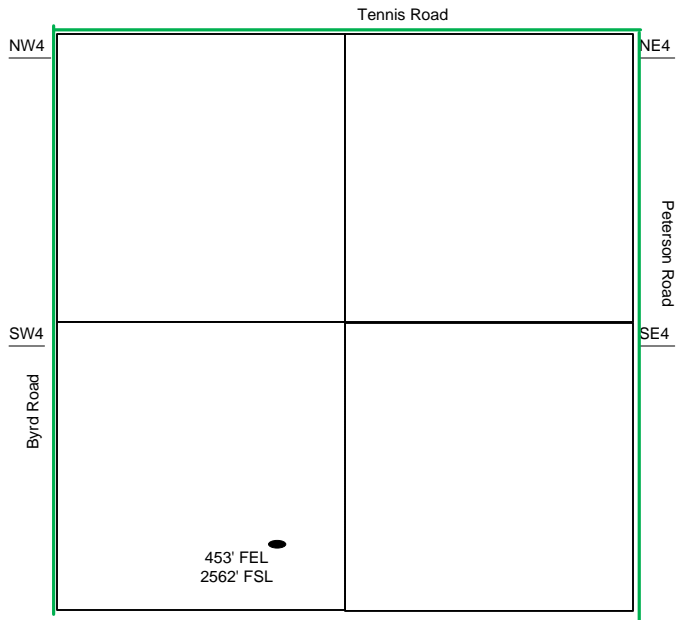
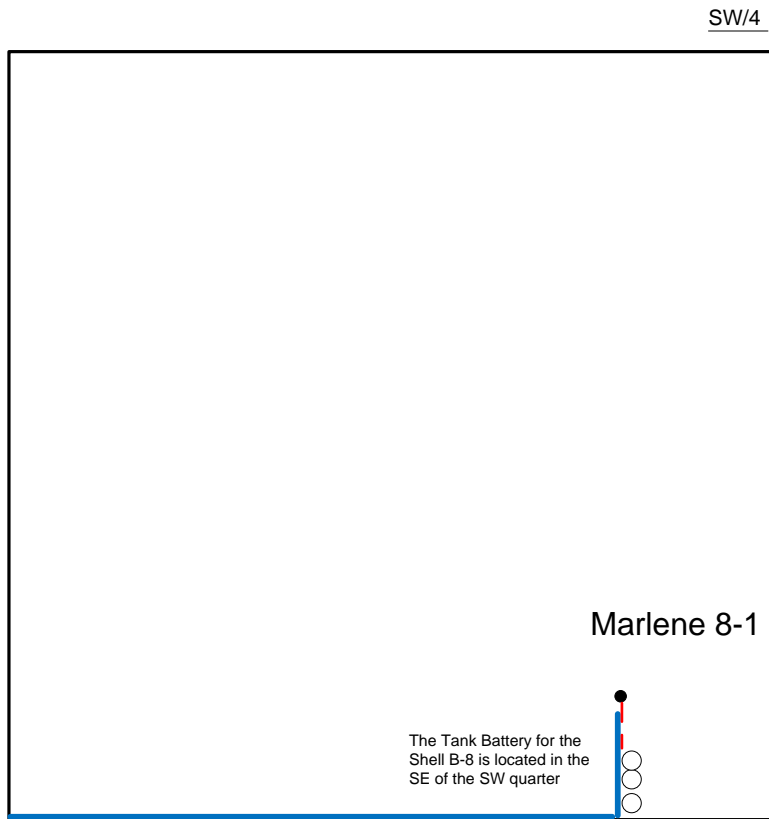


Proposed Plan of Construction

Marlene 8-1
Sec 8 T22S-R34W
Finney County, KS



Sec 8 – T22S – R34W



Proposed Details of
SW/4 Sec 8 – T22S – R34W

Note-Drawing **Not** to Scale

Proposed Site Diagram
Marlene 8-1
December 1,2014