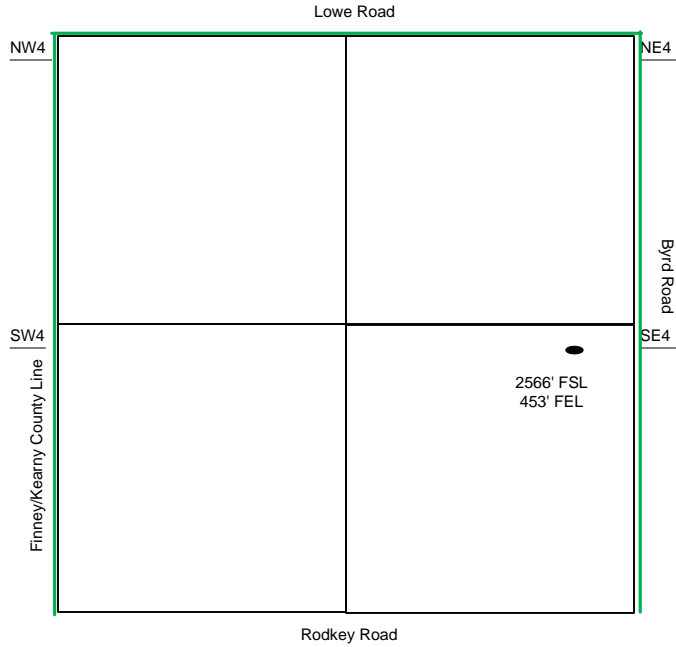
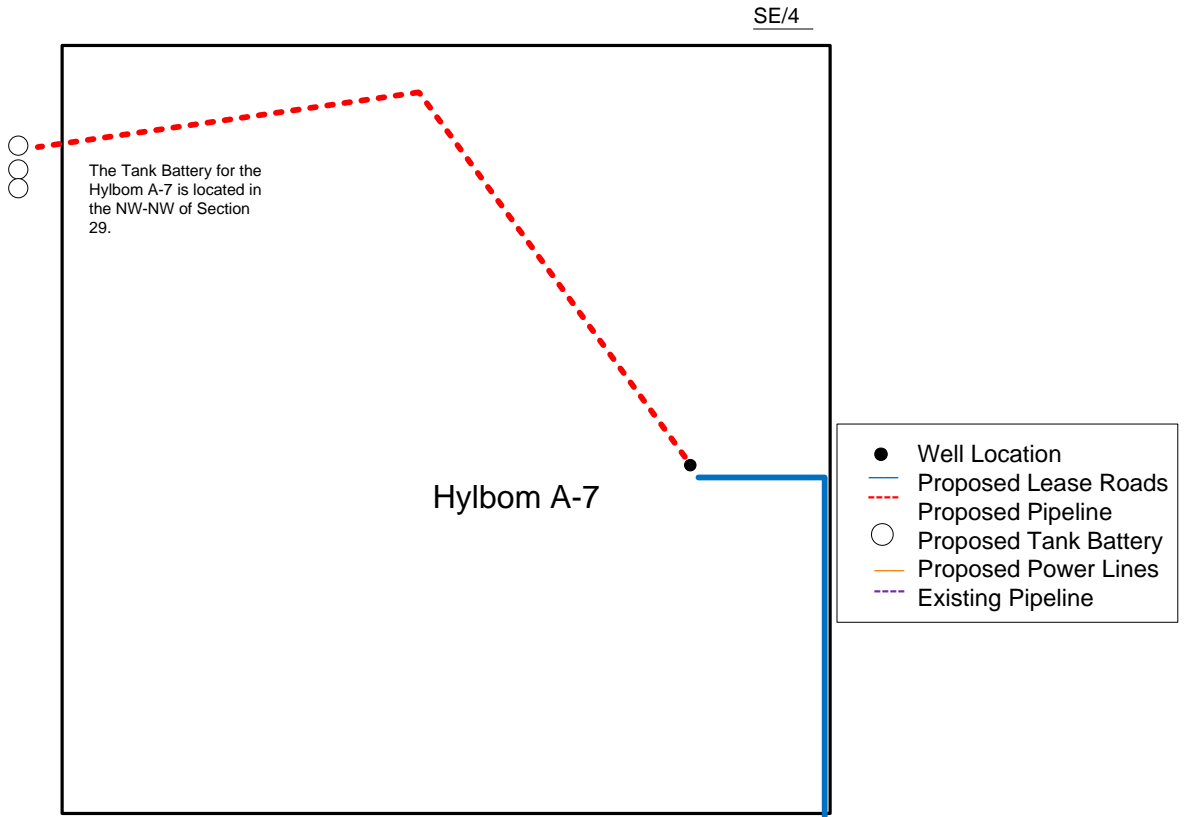


**Proposed Plan of Construction**  
 Hylbom A-8  
 Sec 30 T23S-R34W  
 Finney County, KS



Sec 30 – T23S – R34W



Proposed Details of  
 SE/4 Sec 30 – T23S – R34W

Proposed Site Diagram  
 Hylbom A-8  
 December 2, 2014

Note-Drawing **Not** to Scale