



341231L
CRD NO.

PRO-STAKE

LLC

Construction Site Staking

P.O. Box 2324 Garden City, Kansas 67846
Office/Fax: (620) 276-6159 – Cell: (620) 272-1499
burt@pro-stakellc.kscoxmail.com

12341
INVOICE NO.



Murfin Drilling Company, Inc.
OPERATOR

Abell Ranch B #2-31
LEASE NAME

Gove County, KS
COUNTY

31 **12s** **30w**
Sec. **Twp.** **Rng.**

650' FNL - 1160' FWL
LOCATION SPOT

SCALE: **1" = 1000'**
DATE STAKED: **Dec. 2nd, 2014**
MEASURED BY: **Kent C.**
DRAWN BY: **Norby S.**
AUTHORIZED BY: **Shauna G.**

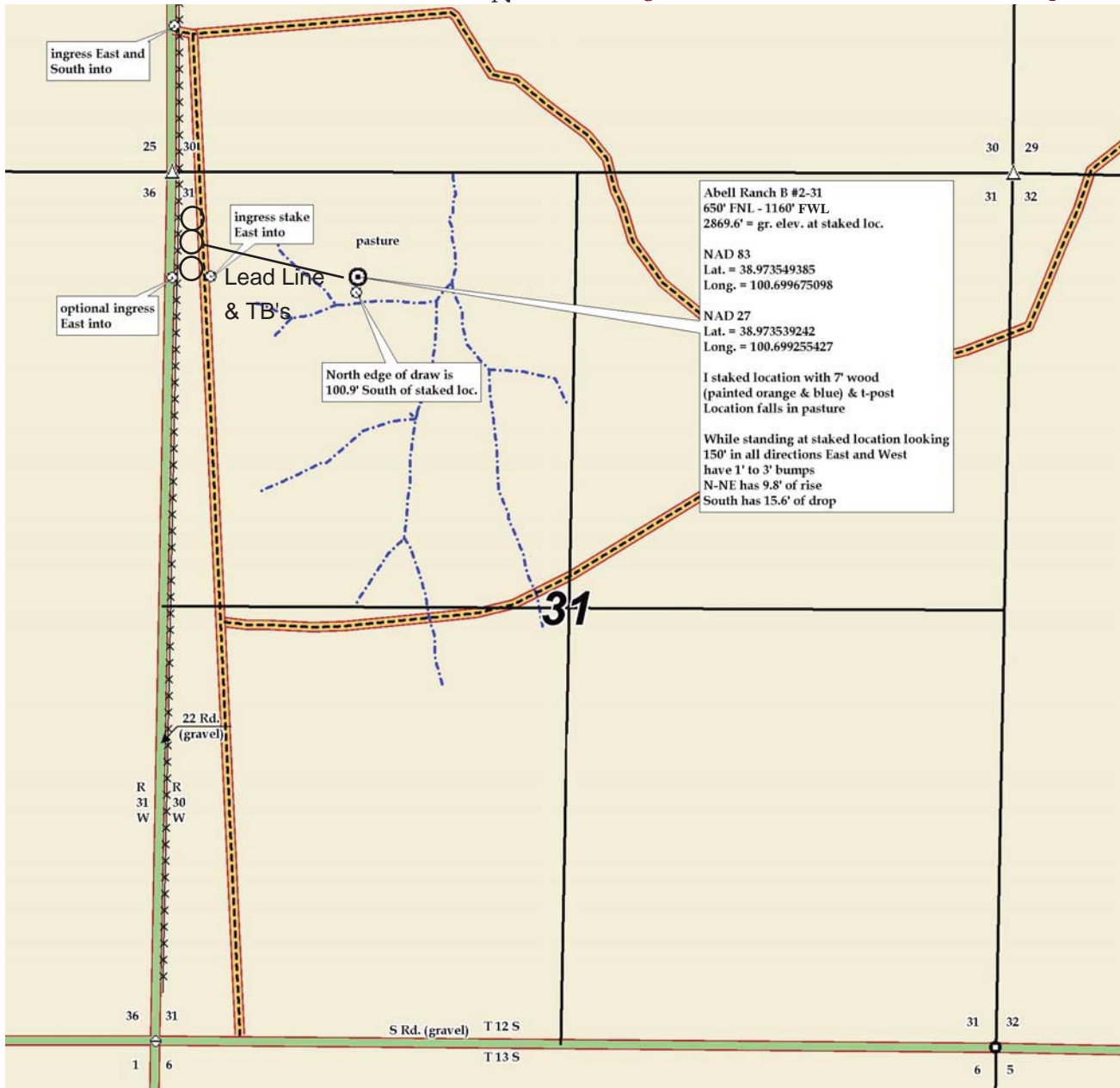
GR. ELEVATION: **2869.6'**

*This drawing does not constitute a monumented survey or a land survey plat.
This drawing is for construction purposes only.*



DIRECTIONS: From the South side of Oakley, KS at the intersection of Hwy 40 and Hwy 83 South - Now go 7 miles South on Hwy 83 - Now go 2 miles East on Wagon Rd. - Now go 6 miles East on Go W - Now go 2.8 miles to ingress East and South into - Now go 0.2 mile East and South on trail / old runway, which is approx. 0.1 mile East on the NW corner of section 31-12s-30w - Now go 0.2 mile South on trail / old runway to ingress stake East into - Now go approx. 950' East through pasture, into staked location.

Final ingress must be verified with landowner or operator.





341231L
CRD NO.

PRO-STAKE

LLC

Construction Site Staking

P.O. Box 2324 Garden City, Kansas 67846
Office/Fax: (620) 276-6159 – Cell: (620) 272-1499
burt@pro-stakellc.kscoxmail.com

12341
INVOICE NO.



Murfin Drilling Company, Inc.
OPERATOR

Abell Ranch B #2-31
LEASE NAME

Gove County, KS
COUNTY

31 **12s** **30w**
Sec. **Twp.** **Rng.**

650' FNL - 1160' FEL
LOCATION SPOT

SCALE: **1" = 1000'**
DATE STAKED: **Dec. 2nd, 2014**
MEASURED BY: **Kent C.**
DRAWN BY: **Norby S.**
AUTHORIZED BY: **Shauna G.**

GR. ELEVATION: **2869.6'**

*This drawing does not constitute a monumented survey or a land survey plat.
This drawing is for construction purposes only.*



DIRECTIONS: From the South side of Oakley, KS at the intersection of Hwy 40 and Hwy 83 South - Now go 7 miles South on Hwy 83 - Now go 2 miles East on Wagon Rd. - Now go 6 miles East on Go W - Now go 2.8 miles to ingress East and South into - Now go 0.2 mile East and South on trail / old runway, which is approx. 0.1 mile East on the NW corner of section 31-12s-30w - Now go 0.2 mile South on trail / old runway to ingress stake East into - Now go approx. 950' East through pasture, into staked location.

Final ingress must be verified with landowner or operator.

