

Timothy G. Pierce

Petroleum Geologist

GEOLOGIST'S REPORT DRILLING TIME AND SAMPLE LOG

COMPANY R & B Oil and Gas, Inc.
 LEASE Ricke 'B' #1
 FIELD Wildcat
 LOCATION SE SW
 SEC 33 TWP 31S RGE 11W
 COUNTY Barber STATE Kansas
 CONTRACTOR Hardt Drilling Rig #1
 SPUD 8-22-2014 COMP 8-30-2014
 RTD 4470 LTD 4472
 MUD UP 2688 TYPE MUD Chemical
 SAMPLES SAVED FROM 2600 TO RTD
 DRILLING TIME KEPT FROM 2600 TO RTD
 SAMPLES EXAMINED FROM 2600 TO RTD
 GEOLOGICAL SUPERVISION FROM 2513 to RTD
 GEOLOGIST ON WELL Tim Pierce

ELEVATIONS

KB 1579'
 DF _____
 GL 1569'
 Measurements Are All
 From Kelly Bushing

CASING

CONDUCTOR _____
 SURFACE 8-5/8" at 252'
 PRODUCTION None

ELECTRICAL SURVEYS

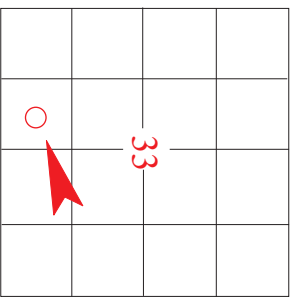
Pioneer Energy Svcs.
DIL / DUCP

FORMATION TOPS

ELECTRIC LOG

SAMPLE

Onaga Sh.	2614 (-1035)	2612 (-1033)
Heebner Sh.	3584 (-2005)	3583 (-2004)
Lansing	3760 (-2181)	3758 (-2179)
Stark Sh.	4158 (-2579)	4157 (-2578)
Cherokee Sh.	4464 (-2785)	4466 (-2787)
Mississippi	4490 (-2811)	4483 (-2804)


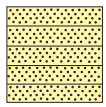
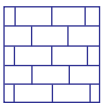
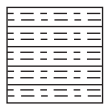

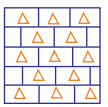

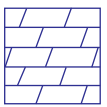


API # 15-007-24,201

REMARKS DST's 2 covered both the Cherokee sand and Mississippi, measureable gas and water were recovered. Logs were run and indicated possible gas production from the Cherokee and water from the Mississippi. DST 3 was then run in an attempt to isolate the Cherokee sand by itself, recovery on the test was similar to DST #2. The decision was made to plug the Ricke 'B' #1 as a dry hole on 8-30-2014.

Timothy G. Pierce

LEGEND

							
Anhydrite	Sandstone	Limestone	Shale	Carb Sh	Cherty LS	Chert	Dolomite

DRILLING TIME IN MINUTES PER FOOT

Rate of Penetration Decreases →

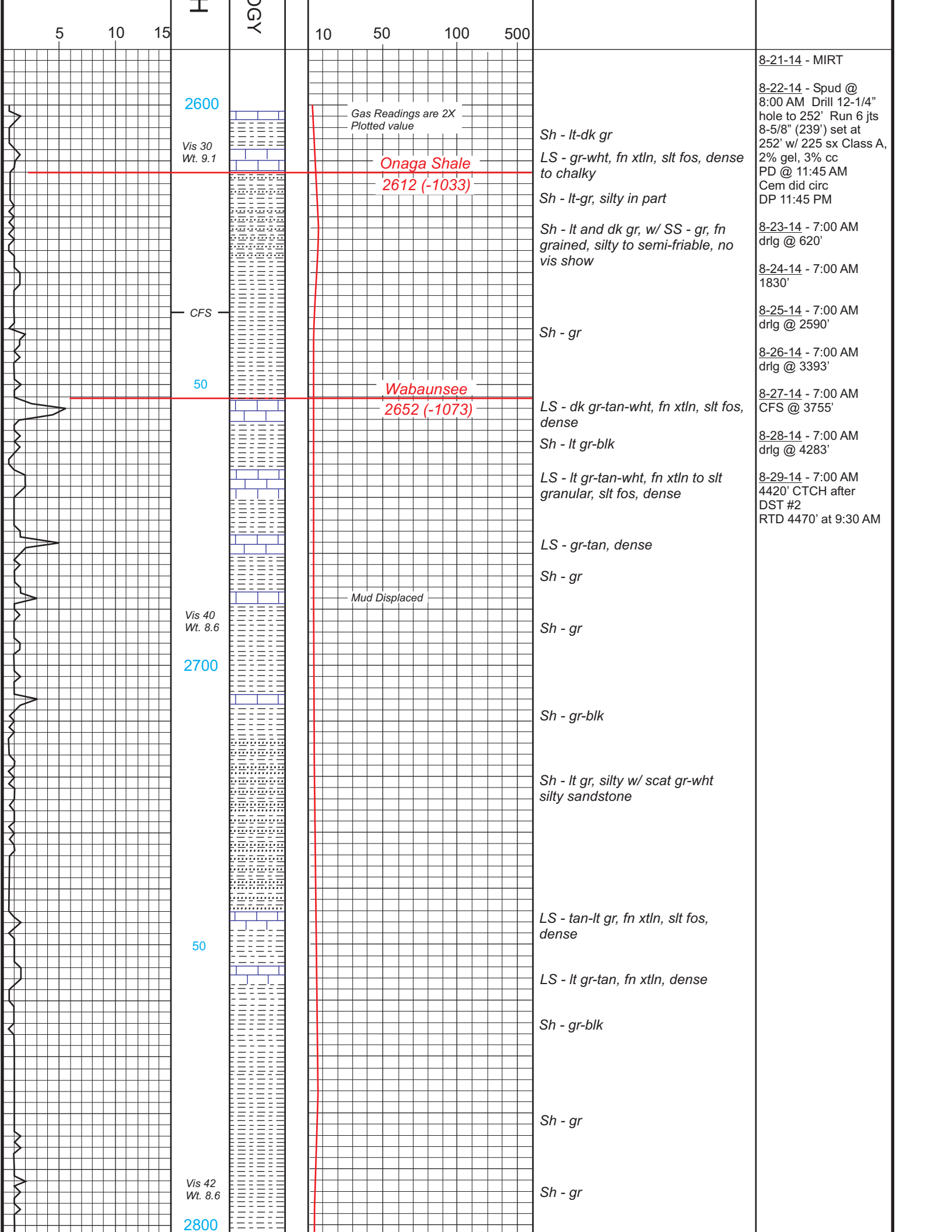
DEPTH

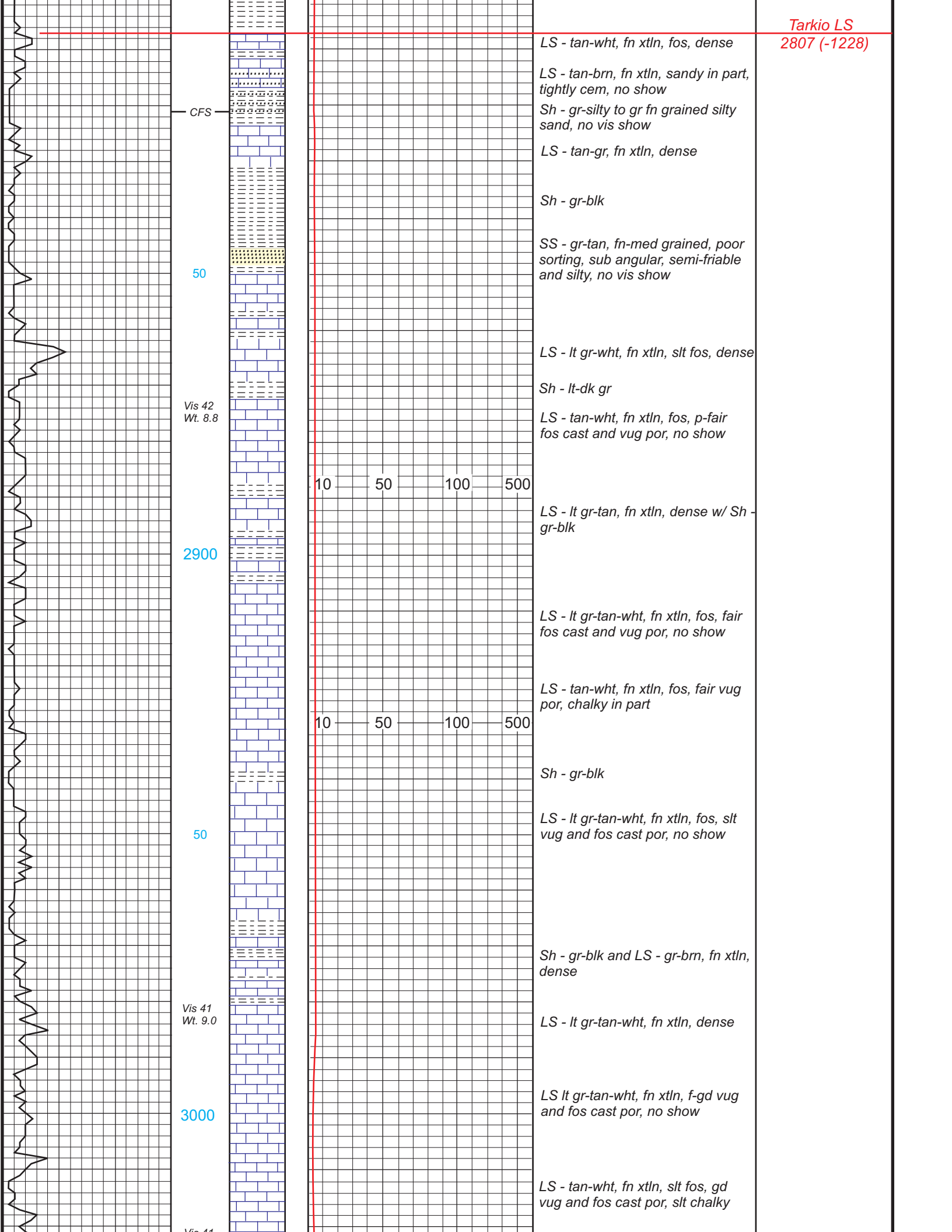
LITHOLOG

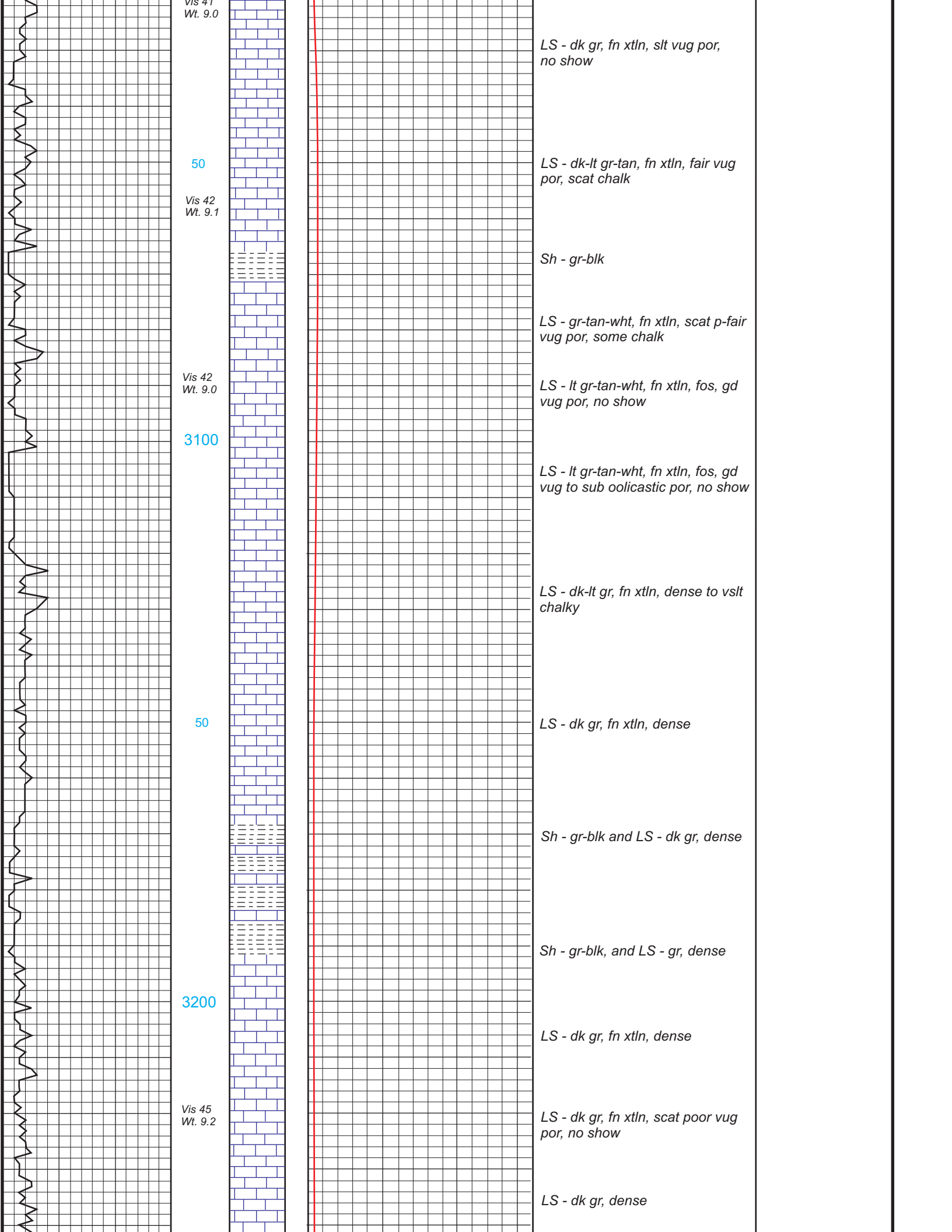
GAS SCALE

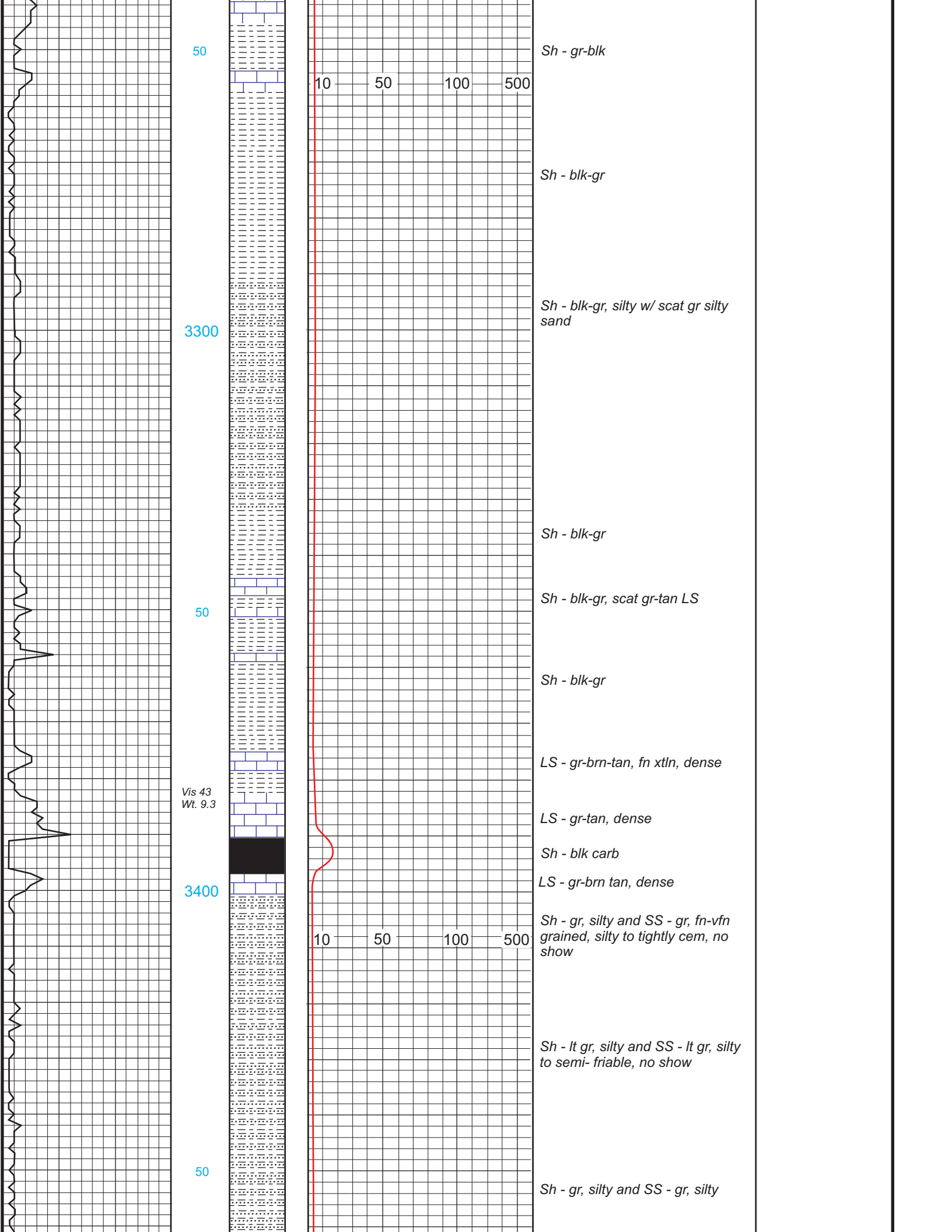
SAMPLE DESCRIPTION

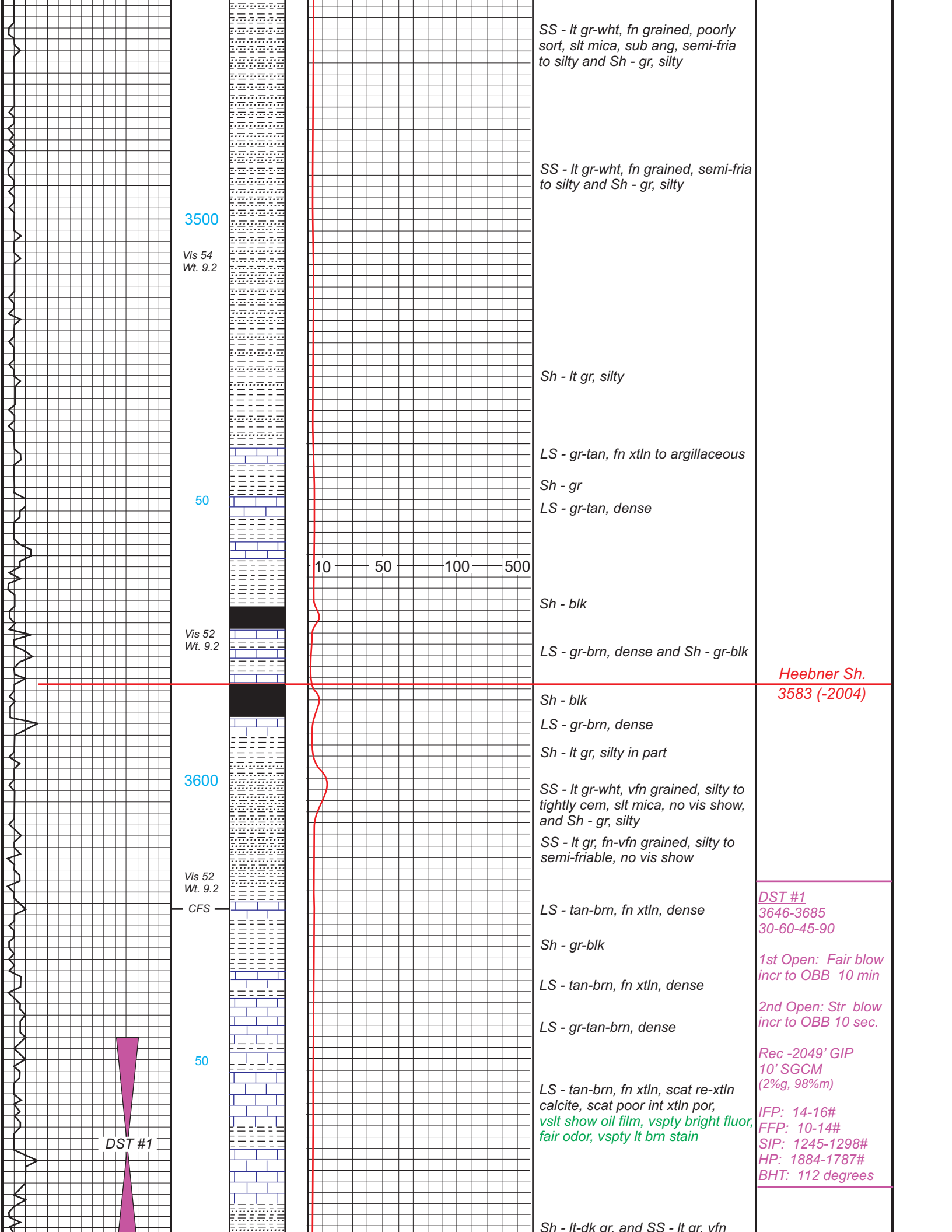
REMARKS

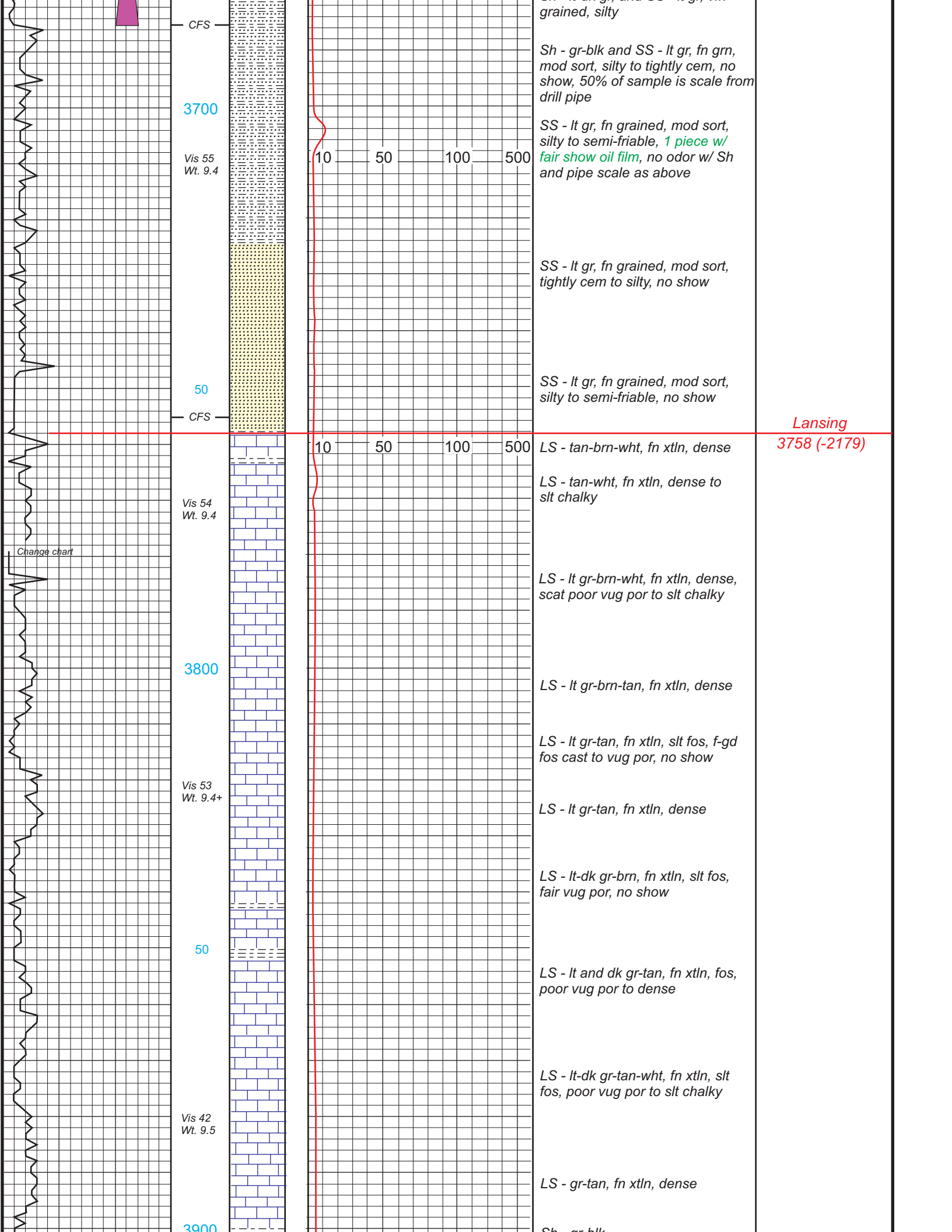


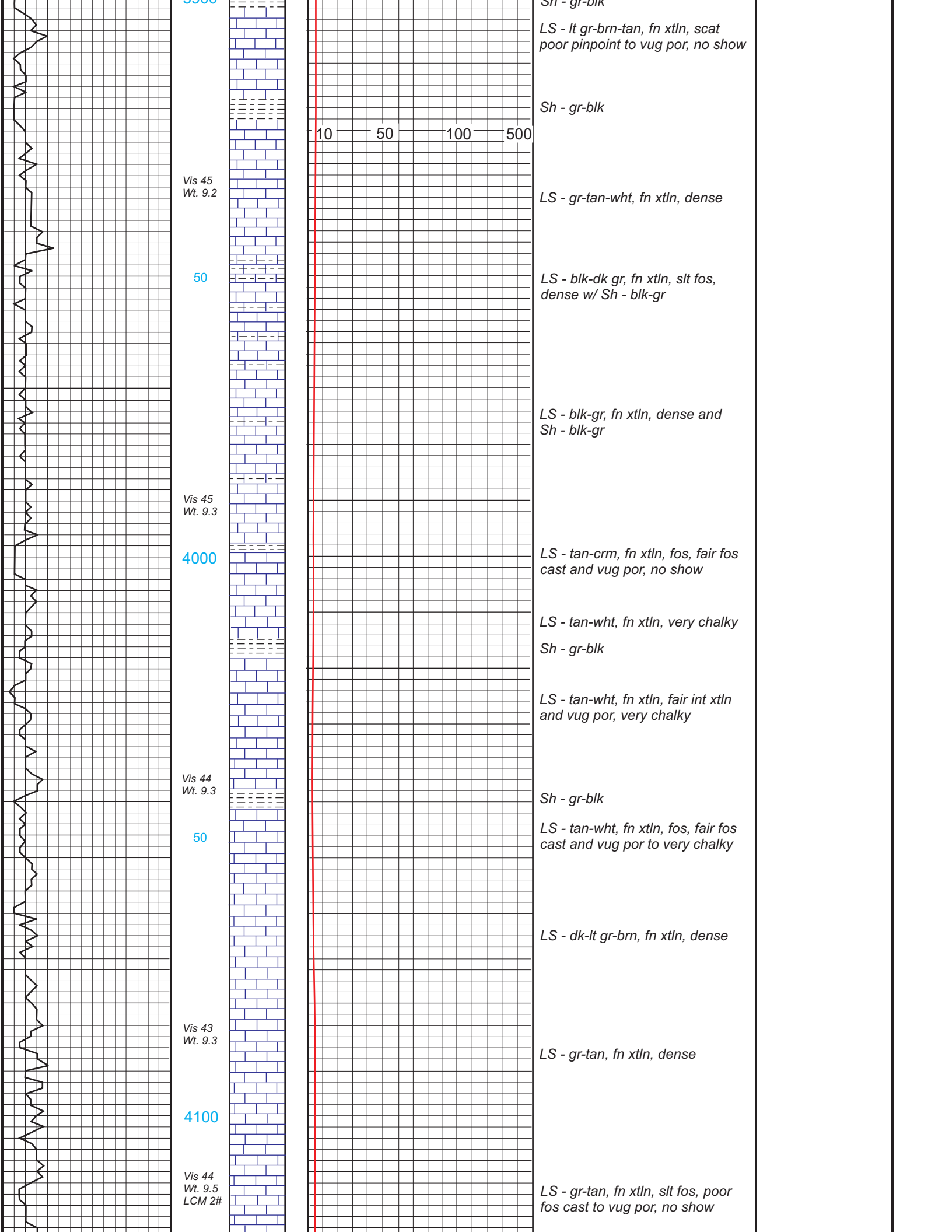


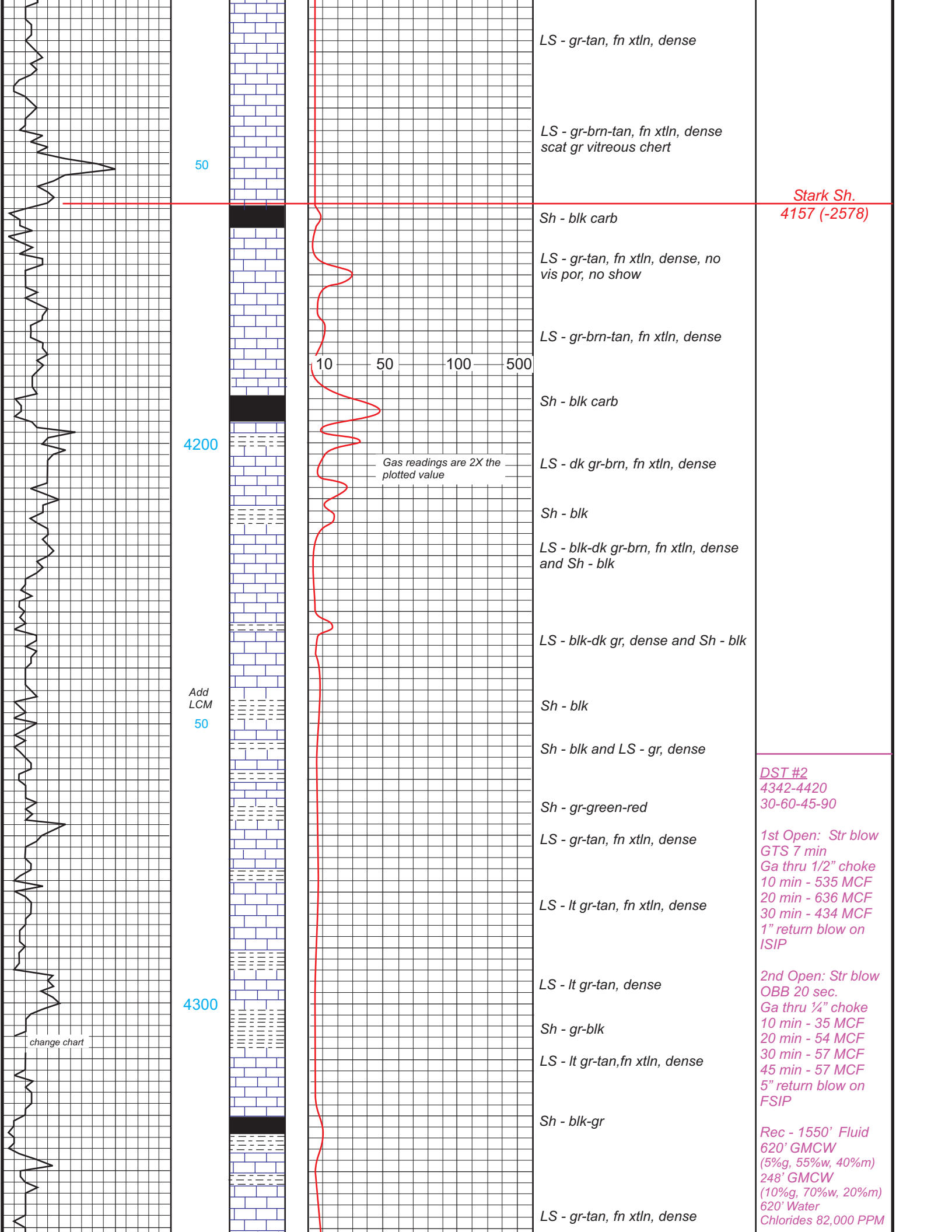












LS - gr-tan, fn xtln, dense

LS - gr-brn-tan, fn xtln, dense
scat gr vitreous chert

Stark Sh.
4157 (-2578)

Sh - blk carb

LS - gr-tan, fn xtln, dense, no
vis por, no show

LS - gr-brn-tan, fn xtln, dense

10 50 100 500

Sh - blk carb

Gas readings are 2X the
plotted value

LS - dk gr-brn, fn xtln, dense

Sh - blk

LS - blk-dk gr-brn, fn xtln, dense
and Sh - blk

LS - blk-dk gr, dense and Sh - blk

Sh - blk

Sh - blk and LS - gr, dense

DST #2
4342-4420
30-60-45-90

Sh - gr-green-red

1st Open: Str blow
GTS 7 min
Ga thru 1/2" choke
10 min - 535 MCF
20 min - 636 MCF
30 min - 434 MCF
1" return blow on
ISIP

LS - gr-tan, fn xtln, dense

LS - lt gr-tan, fn xtln, dense

2nd Open: Str blow
OBB 20 sec.
Ga thru 1/4" choke
10 min - 35 MCF
20 min - 54 MCF
30 min - 57 MCF
45 min - 57 MCF
5" return blow on
FSIP

LS - lt gr-tan, dense

Sh - gr-blk

LS - lt gr-tan, fn xtln, dense

Sh - blk-gr

Rec - 1550' Fluid
620' GMCW
(5%g, 55%w, 40%m)
248' GMCW
(10%g, 70%w, 20%m)
620' Water
Chlorides 82,000 PPM

LS - gr-tan, fn xtln, dense

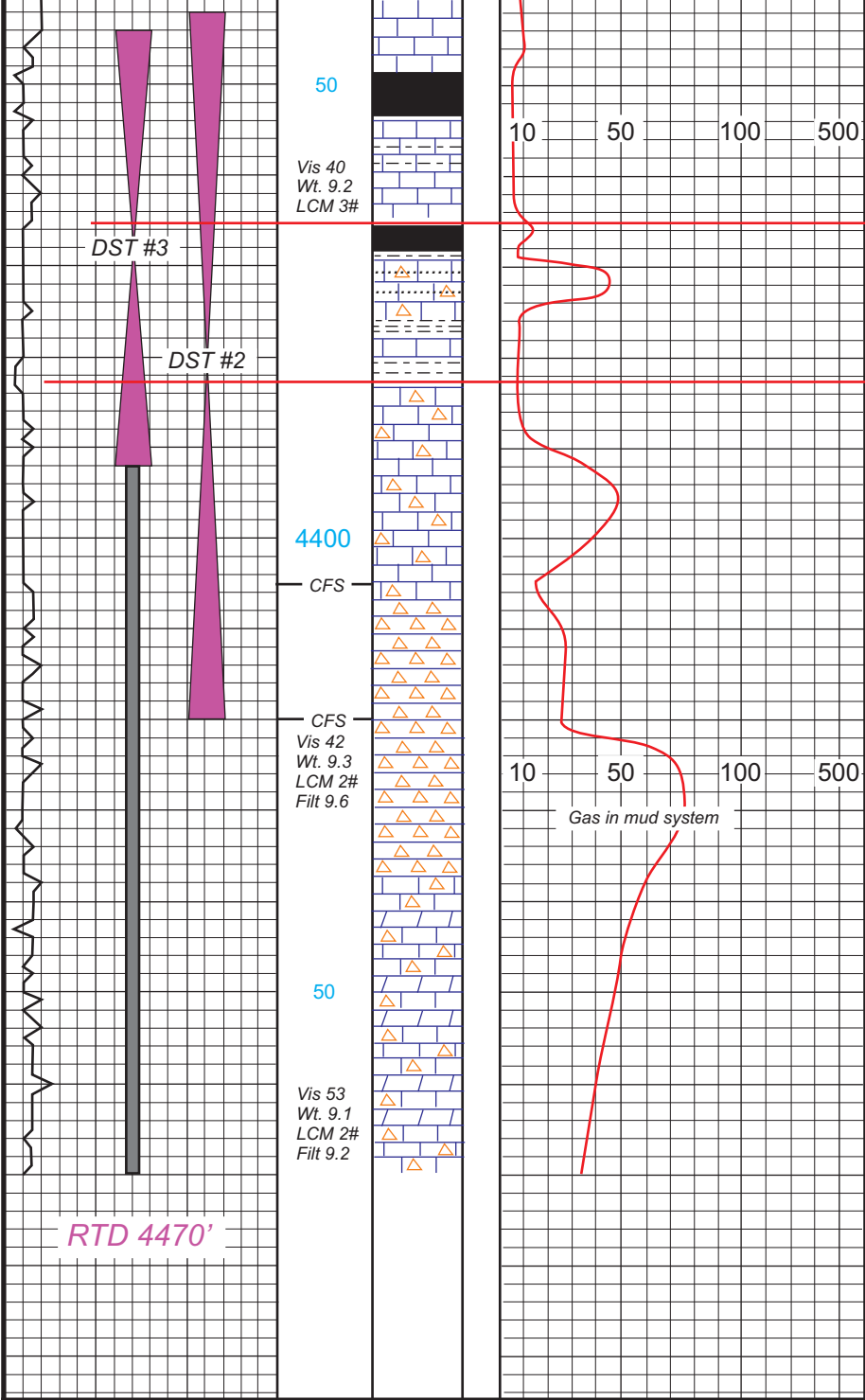
50

4200

Add
LCM
50

4300

change chart



Sh - blk carb

LS - gr-tan, dense

Sh - blk carb
LS - gr-brn, fn xtl'n to sandy, scat gr vitr chert, *scat show gilsonite, silt show free oil and gas, faint odor, brn-blk stain, spty bright fluor*

LS - tan, fn xtl'n, cherty and chert tan-wht, fresh to silt weath, *scat silt show gilsonite, scat silt show gas and oil film, spty blk stain, faint odor, abundant gr shale*

Chert - wht, fresh to silt weath, *scat show gilsonite, scat vsilt show free oil and gas, faint odor, spty brn-blk stain, spty bright fluor*

Sh - red-gr, (cavings?) w/ scat wht vitreous chert, silt weathered edges, scat blk edge stain

Sh - red-gr (cavings?) w/ scat LS - lt gr-wht, fn xtl'n to granular, and fresh wht chert

LS/Dolo - lt gr-wht, fn xtl'n to gran, dense and silt cherty, scat wht fresh chert, occasional edge stain

IFP: 365-540#
FFP: 458-698#
SIP: 714-718#
HP: 2257-2070#
BHT: 124 degrees

Cherokee Sh.
4466 (-2787)

Mississippi
4483 (-2804)

DST #3
Tailpipe Straddle
4346-4394 (log)
4344-4392
30-60-30-60

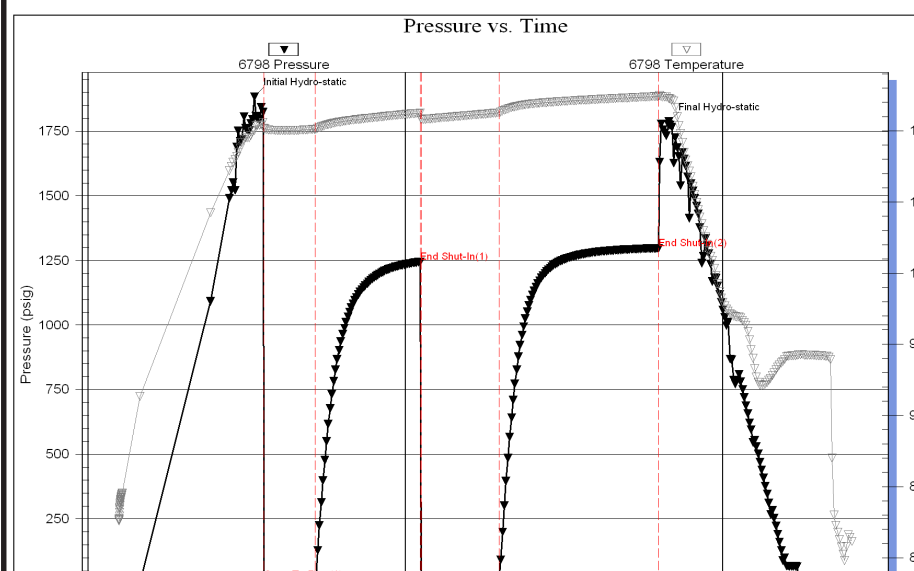
1st Open: Str blow
GTS 12 min
Ga thru 1/4" choke
15 min - 181 MCF
20 min - 244 MCF
30 min - 308 MCF
3.5" return blow on ISIP

2nd Open: Str blow
OBB 10 sec.
Ga thru 1/4" choke
10 min - 98 MCF
20 min - 130 MCF
30 min - 129 MCF

Rec - 1240' Fluid
516' GWCM
(20%g, 20%w, 60%*m*)
186' GMCW
(6%g, 80%w, 14%*m*)
558' Water
Chlorides 72,000 PPM

IFP: 332-582#
FFP: 403-632#
SIP: 717-711#
HP: 2257-2070#
BHT: 123 degrees

Serial #: 6798 Inside R & B Oil & Gas Ricke B-1 DST Test Number: 1



DST #1
3646-3685
30-60-45-90

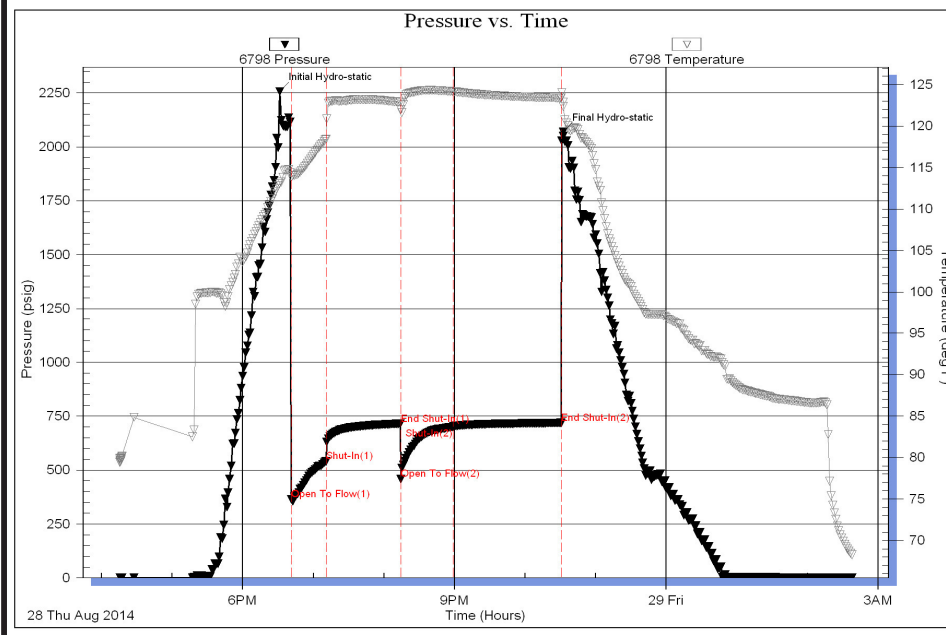
1st Open: Fair blow
incr to OBB 10 min

2nd Open: Str blow
incr to OBB 10 sec.

Rec -2049' GIP
10' SGCM
(2%g, 98%*m*)

IFP: 14-16#
FFP: 10-14#
SIP: 1245-1298#
HP: 1884-1787#
BHT: 118 degrees

Serial #: 6798 Inside R & B Oil & Gas Ricke B-1 DST Test Number: 2



DST #2
4342-4420
30-60-45-90

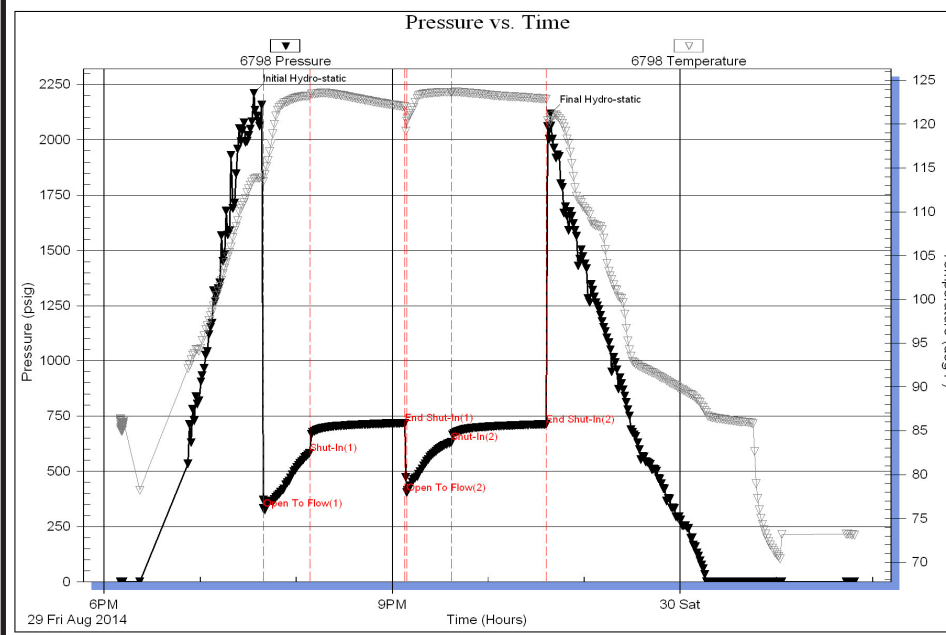
1st Open: Str blow
GTS 7 min
Ga thru 1/2" choke
10 min - 535 MCF
20 min - 636 MCF
30 min - 434 MCF
1" return blow on ISIP

2nd Open: Str blow
OBB 20 sec.
Ga thru 1/4" choke
10 min - 35 MCF
20 min - 54 MCF
30 min - 57 MCF
45 min - 57 MCF
5" return blow on FSIP

Rec - 1550' Fluid
620' GMCW
(5%g, 55%w, 40%m)
248' GMCW
(10%g, 70%w, 20%m)
620' Water
Chlorides 82,000 PPM

IFP: 365-540#
FFP: 458-698#
SIP: 714-718#
HP: 2257-2070#
BHT: 124 degrees

Serial #: 6798 Inside R & B Oil & Gas Ricke B-1 DST Test Number: 3



DST #3
Tailpipe Straddle

4346-4394 (log)
4344-4392
30-60-30-60

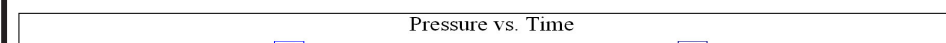
1st Open: Str blow
GTS 12 min
Ga thru 1/4" choke
15 min - 181 MCF
20 min - 244 MCF
30 min - 308 MCF
3.5" return blow on ISIP

2nd Open: Str blow
OBB 10 sec.
Ga thru 1/4" choke
10 min - 98 MCF
20 min - 130 MCF
30 min - 129 MCF

Rec - 1240' Fluid
516' GWCM
(20%g, 20%w, 60%m)
186' GMCW
(6%g, 80%w, 14%m)
558' Water
Chlorides 72,000 PPM

IFP: 332-582#
FFP: 403-632#
SIP: 717-711#
HP: 2257-2070#
BHT: 123 degrees

Serial #: 8358 Below (Str) Oil & Gas Ricke B-1 DST Test Number: 3

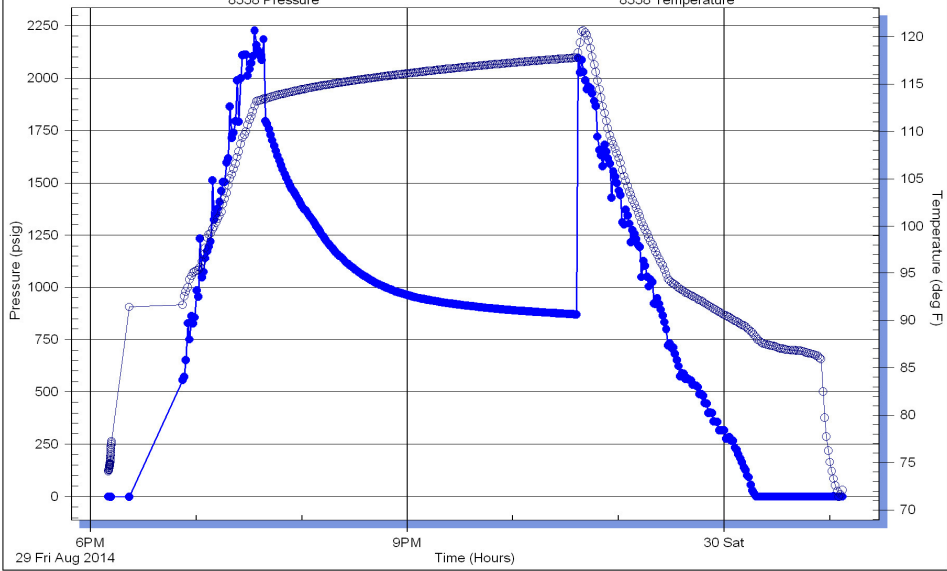


DST #3
Tailpipe Straddle

4346, 4394 (log)

8358 Pressure

8358 Temperature



4340-4394 (10g)
4344-4392
30-60-30-60

1st Open: Str blow
GTS 12 min
Ga thru 1/4" choke
15 min - 181 MCF
20 min - 244 MCF
30 min - 308 MCF
3.5" return blow on
ISIP

2nd Open: Str blow
OBB 10 sec.
Ga thru 1/4" choke
10 min - 98 MCF
20 min - 130 MCF
30 min - 129 MCF

Rec - 1240' Fluid
516' GWCM
(20%g, 20%w, 60%m)
186' GMCW
(6%g, 80%w, 14%m)
558' Water
Chlorides 72,000 PPM

IFP: 332-582#
FFP: 403-632#
SIP: 717-711#
HP: 2257-2070#
BHT: 123 degrees

