



**TRILOBITE  
TESTING, INC.**

# DRILL STEM TEST REPORT

Shakespeare Oil Inc

**21-16s-34w Scott, Ks**

202 W Main St  
Salem, Il  
62881-1519

**Bahm #2-21**

Job Ticket: 59097

**DST#: 1**

ATTN: Tim Priest

Test Start: 2014.10.29 @ 04:20:31

## GENERAL INFORMATION:

Formation: **Marmaton A**

Deviated: No Whipstock: 0.00 ft (KB)

Time Tool Opened: 09:55:16

Time Test Ended: 16:45:46

Test Type: Conventional Bottom Hole (Initial)

Tester: Shane McBride

Unit No: 55

**Interval: 4458.00 ft (KB) To 4490.00 ft (KB) (TVD)**

Reference Elevations: 3144.00 ft (KB)

Total Depth: 4490.00 ft (KB) (TVD)

3135.00 ft (CF)

Hole Diameter: 7.88 inches Hole Condition: Fair

KB to GR/CF: 9.00 ft

**Serial #: 6771 Inside**

Press @ RunDepth: 83.36 psig @ 4459.00 ft (KB)

Capacity: 8000.00 psig

Start Date: 2014.10.29

End Date: 2014.10.29

Last Calib.: 2014.10.29

Start Time: 04:20:31

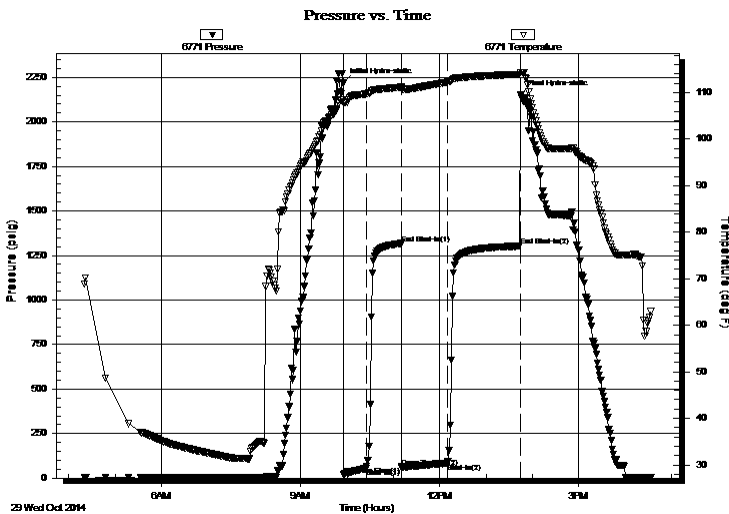
End Time: 16:33:46

Time On Btm: 2014.10.29 @ 09:55:01

Time Off Btm: 2014.10.29 @ 13:45:01

**TEST COMMENT:** 5 1/2" in blow  
No return  
B.O.B. in 57 min.  
Weak surface blow in 14 min. died in 34 min.

## PRESSURE SUMMARY



Time (Min.)	Pressure (psig)	Temp (deg F)	Annotation
0	2218.45	108.49	Initial Hydro-static
1	18.83	107.74	Open To Flow (1)
30	55.65	109.70	Shut-In(1)
75	1317.45	111.16	End Shut-In(1)
76	60.58	110.70	Open To Flow (2)
135	83.36	112.25	Shut-In(2)
229	1302.94	113.90	End Shut-In(2)
230	2151.83	114.23	Final Hydro-static

## Recovery

Length (ft)	Description	Volume (bbl)
150.00	g m c o 15g 30m 55o	0.97
25.00	c g o 10g 90o	0.35
0.00	245' gas in pipe	0.00

## Gas Rates

	Choke (inches)	Pressure (psig)	Gas Rate (Mcf/d)





**TRILOBITE  
TESTING, INC.**

# DRILL STEM TEST REPORT

**FLUID SUMMARY**

Shakespeare Oil Inc

**21-16s-34w Scott, Ks**

202 W Main St  
Salem, Il  
62881-1519

**Bahm #2-21**

Job Ticket: 59097

**DST#: 1**

ATTN: Tim Priest

Test Start: 2014.10.29 @ 04:20:31

## Mud and Cushion Information

Mud Type: Gel Chem

Cushion Type:

Oil API:

31 deg API

Mud Weight: 9.00 lb/gal

Cushion Length:

ft

Water Salinity:

0 ppm

Viscosity: 48.00 sec/qt

Cushion Volume:

bbbl

Water Loss: 8.78 in<sup>3</sup>

Gas Cushion Type:

Resistivity: 0.00 ohm.m

Gas Cushion Pressure:

psig

Salinity: 7600.00 ppm

Filter Cake: 1.00 inches

## Recovery Information

Recovery Table

Length ft	Description	Volume bbl
150.00	g m c o 15g 30m 55o	0.975
25.00	c g o 10g 90o	0.351
0.00	245' gas in pipe	0.000

Total Length: 175.00 ft      Total Volume: 1.326 bbl

Num Fluid Samples: 0

Num Gas Bombs: 0

Serial #:

Laboratory Name:

Laboratory Location:

Recovery Comments:

