



**TRILOBITE TESTING, INC**

# DRILL STEM TEST REPORT

Shakespeare Oil Inc

**21-16s-34w Scott, Ks**

202 W Main St  
Salem, Il  
62881-1519

**Bahm #2-21**

Job Ticket: 59098

**DST#: 2**

ATTN: Tim Priest

Test Start: 2014.10.30 @ 03:50:39

## GENERAL INFORMATION:

Formation: **Marmaton B-C**

Deviated: No Whipstock: 0.00 ft (KB)

Time Tool Opened: 07:59:09

Time Test Ended: 12:40:54

Test Type: Conventional Bottom Hole (Reset)

Tester: Shane McBride

Unit No: 55

Interval: **4490.00 ft (KB) To 4540.00 ft (KB) (TVD)**

Reference Elevations: 3144.00 ft (KB)

Total Depth: 4540.00 ft (KB) (TVD)

3135.00 ft (CF)

Hole Diameter: 7.88 inches Hole Condition: Fair

KB to GR/CF: 9.00 ft

**Serial #: 8844 Outside**

Press@RunDepth: 16.48 psig @ 4491.00 ft (KB)

Capacity: 8000.00 psig

Start Date: 2014.10.30

End Date:

2014.10.30

Last Calib.:

2014.10.30

Start Time:

03:50:39

End Time:

12:30:54

Time On Btm:

2014.10.30 @ 07:58:54

Time Off Btm:

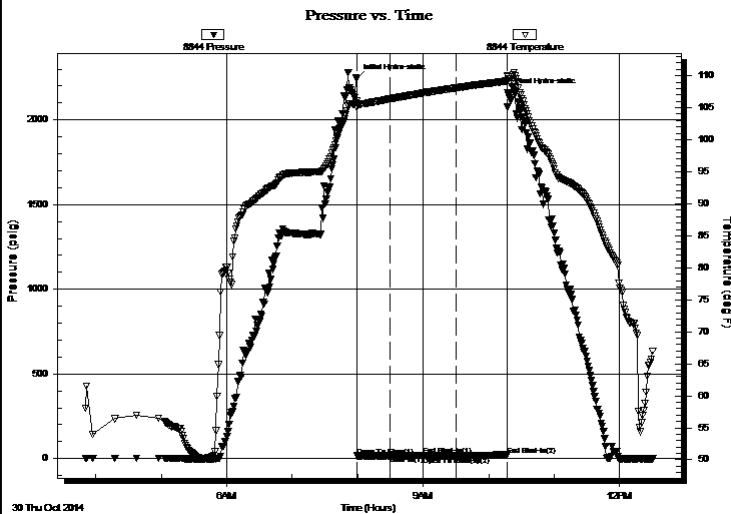
2014.10.30 @ 10:17:24

TEST COMMENT: Surface blow died in 12 min.

No return

No blow

No return



## PRESSURE SUMMARY

Time (Min.)	Pressure (psig)	Temp (deg F)	Annotation
0	2244.17	106.01	Initial Hydro-static
1	16.07	105.01	Open To Flow (1)
31	17.24	106.37	Shut-In(1)
61	21.19	107.30	End Shut-In(1)
62	16.34	107.31	Open To Flow (2)
92	16.48	108.11	Shut-In(2)
138	22.38	109.18	End Shut-In(2)
139	2158.60	109.80	Final Hydro-static

## Recovery

Length (ft)	Description	Volume (bbl)
1.00	mud w / oil spots 100%m	0.00

\* Recovery from multiple tests

## Gas Rates

	Choke (inches)	Pressure (psig)	Gas Rate (Mcf/d)



**TRILOBITE  
TESTING, INC**

# DRILL STEM TEST REPORT

## FLUID SUMMARY

Shakespeare Oil Inc

**21-16s-34w Scott, Ks**

202 W Main St  
Salem, IL  
62881-1519

**Bahm #2-21**

Job Ticket: 59098

**DST#: 2**

ATTN: Tim Priest

Test Start: 2014.10.30 @ 03:50:39

### Mud and Cushion Information

Mud Type: Gel Chem

Cushion Type:

Oil API:

0 deg API

Mud Weight: 9.00 lb/gal

Cushion Length:

ft

Water Salinity:

0 ppm

Viscosity: 56.00 sec/qt

Cushion Volume:

bbbl

Water Loss: 8.76 in<sup>3</sup>

Gas Cushion Type:

Resistivity: 0.00 ohm.m

Gas Cushion Pressure:

psig

Salinity: 7600.00 ppm

Filter Cake: 1.00 inches

### Recovery Information

Recovery Table

Length ft	Description	Volume bbl
1.00	mud w / oil spots 100%m	0.005

Total Length: 1.00 ft      Total Volume: 0.005 bbl

Num Fluid Samples: 0

Num Gas Bombs: 0

Serial #:

Laboratory Name:

Laboratory Location:

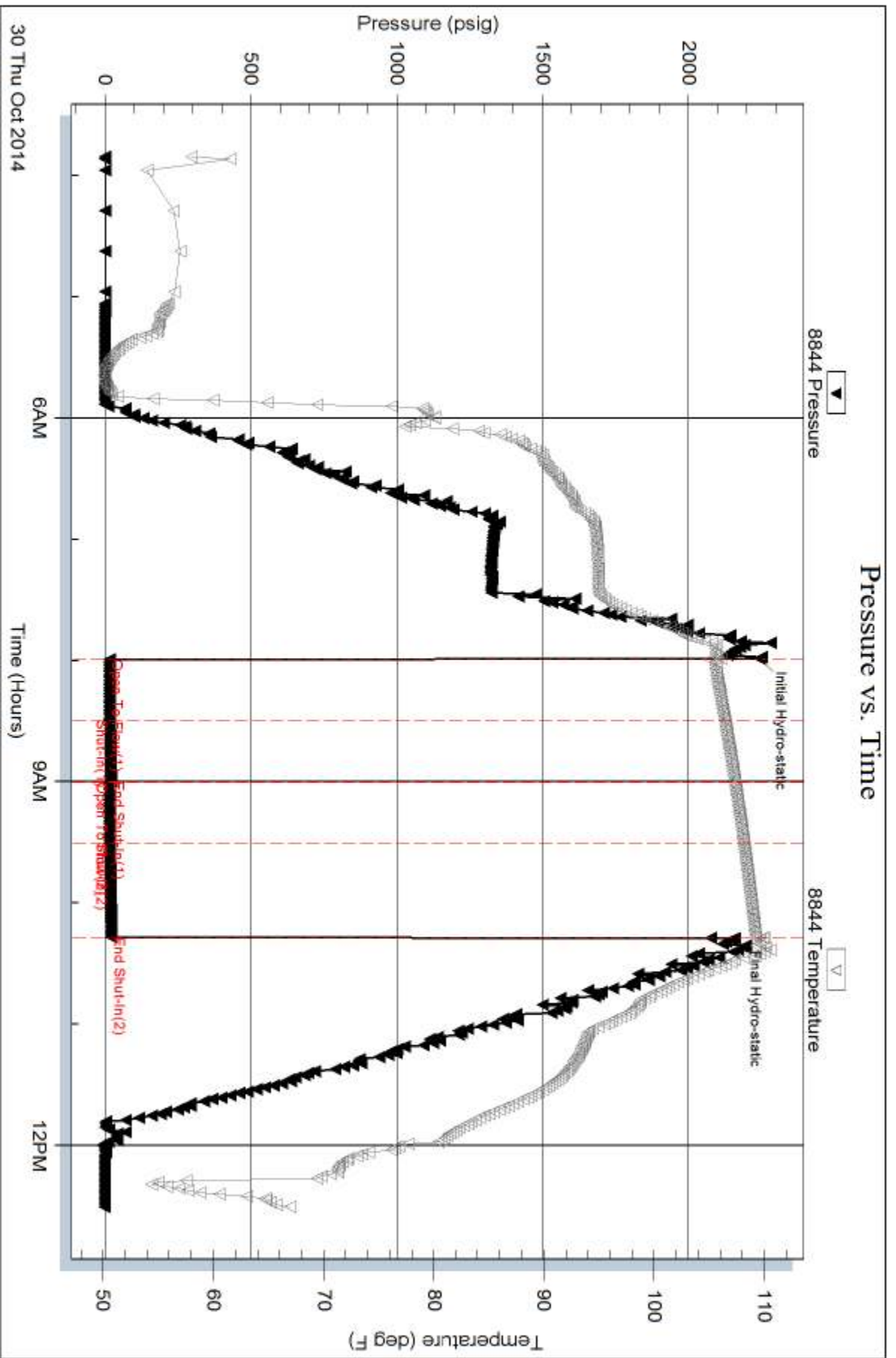
Recovery Comments:

Serial #: 8844

Outside Shakespeare Oil Inc

Bahm#2-21

DST Test Number: 2



Tribble Testing, Inc

Ref. No: 59098

Printed: 2014, 10:30 @ 13:07:27