



**TRILOBITE  
TESTING, INC**

# DRILL STEM TEST REPORT

Shakespeare Oil Inc

**21-16s-34w Scott, Ks**

202 W Main St  
Salem, Il  
62881-1519

**Bahm #2-21**

Job Ticket: 59099

**DST#: 3**

ATTN: Tim Priest

Test Start: 2014.10.31 @ 04:55:16

## GENERAL INFORMATION:

Formation: **Ft Scott**

Deviated: No Whipstock: 0.00 ft (KB)

Time Tool Opened: 07:55:16

Time Test Ended: 12:40:16

Test Type: Conventional Bottom Hole (Reset)

Tester: Shane McBride

Unit No: 55

**Interval: 4584.00 ft (KB) To 4620.00 ft (KB) (TVD)**

Total Depth: 4620.00 ft (KB) (TVD)

Hole Diameter: 7.88 inches Hole Condition: Fair

Reference Elevations: 3144.00 ft (KB)

3135.00 ft (CF)

KB to GR/CF: 9.00 ft

**Serial #: 8844 Outside**

Press@RunDepth: 33.42 psig @ 4585.00 ft (KB)

Start Date: 2014.10.31

End Date:

2014.10.31

Start Time: 04:55:16

End Time:

12:28:16

Capacity: 8000.00 psig

Last Calib.: 2014.10.31

Time On Btm: 2014.10.31 @ 07:54:46

Time Off Btm: 2014.10.31 @ 10:05:31

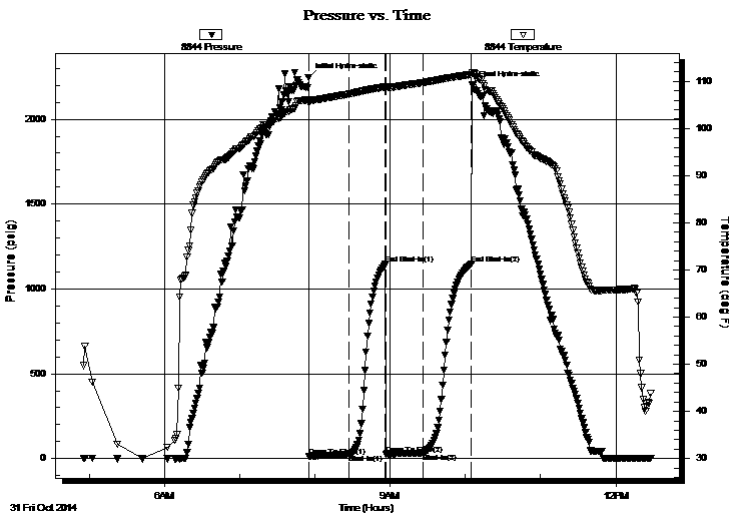
TEST COMMENT: Weak surface blow died in 8 min.

No return

No blow

No return

## PRESSURE SUMMARY



Time (Min.)	Pressure (psig)	Temp (deg F)	Annotation
0	2246.48	106.10	Initial Hydro-static
1	14.60	105.53	Open To Flow (1)
33	23.79	107.31	Shut-In(1)
62	1145.09	108.80	End Shut-In(1)
62	26.65	108.50	Open To Flow (2)
91	33.42	109.71	Shut-In(2)
130	1146.02	111.45	End Shut-In(2)
131	2200.67	111.88	Final Hydro-static

## Recovery

Length (ft)	Description	Volume (bbl)
5.00	mud 100% m	0.02

## Gas Rates

Choke (inches)	Pressure (psig)	Gas Rate (Mcf/d)

\* Recovery from multiple tests



**TRILOBITE  
TESTING, INC**

# DRILL STEM TEST REPORT

**FLUID SUMMARY**

Shakespeare Oil Inc

**21-16s-34w Scott, Ks**

202 W Main St  
Salem, Il  
62881-1519

**Bahm #2-21**

Job Ticket: 59099

**DST#: 3**

ATTN: Tim Priest

Test Start: 2014.10.31 @ 04:55:16

## Mud and Cushion Information

Mud Type: Gel Chem

Cushion Type:

Oil API:

0 deg API

Mud Weight: 9.00 lb/gal

Cushion Length:

ft

Water Salinity:

0 ppm

Viscosity: 46.00 sec/qt

Cushion Volume:

bbl

Water Loss: 8.78 in<sup>3</sup>

Gas Cushion Type:

Resistivity: 0.00 ohm.m

Gas Cushion Pressure:

psig

Salinity: 7500.00 ppm

Filter Cake: 1.00 inches

## Recovery Information

Recovery Table

Length ft	Description	Volume bbl
5.00	mud 100%m	0.025

Total Length: 5.00 ft      Total Volume: 0.025 bbl

Num Fluid Samples: 0

Num Gas Bombs: 0

Serial #:

Laboratory Name:

Laboratory Location:

Recovery Comments:

