



**TRILOBITE
TESTING, INC**

DRILL STEM TEST REPORT

Shakespeare Oil Company, Inc.

22-17s-33w Scott Co, KS

202 West Street
Salem IL, 62881

Herron #1-22

Job Ticket: 57298

DST#: 2

ATTN: Mac Armstrong

Test Start: 2014.11.12 @ 16:25:00

GENERAL INFORMATION:

Formation: **LKC 'J&K'**
 Deviated: No Whipstock: ft (KB)
 Time Tool Opened: 18:50:30
 Time Test Ended: 00:48:30
 Interval: **4178.00 ft (KB) To 4230.00 ft (KB) (TVD)**
 Total Depth: 4230.00 ft (KB) (TVD)
 Hole Diameter: 7.88 inches Hole Condition: Poor
 Test Type: Conventional Bottom Hole (Reset)
 Tester: Jace McKinney
 Unit No: 75
 Reference Elevations: 2957.00 ft (KB)
 2945.00 ft (CF)
 KB to GR/CF: 12.00 ft

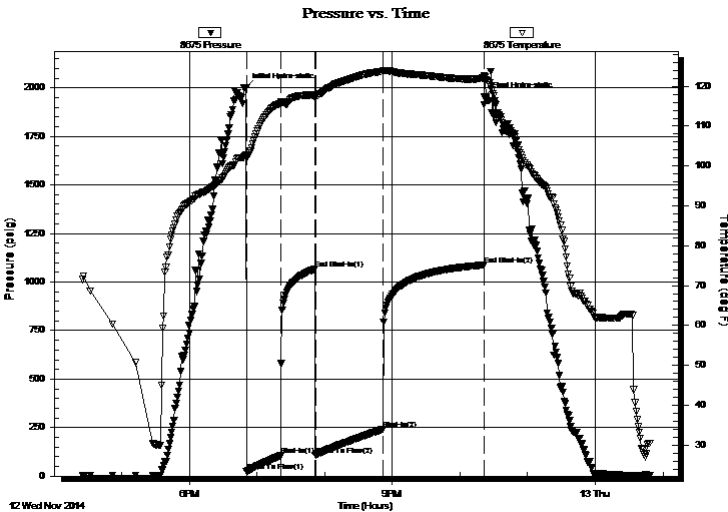
Serial #: 8675

Inside

Press@RunDepth: 240.46 psig @ 4191.00 ft (KB) Capacity: 8000.00 psig
 Start Date: 2014.11.12 End Date: 2014.11.13 Last Calib.: 2014.11.12
 Start Time: 16:25:15 End Time: 00:48:30 Time On Btm: 2014.11.12 @ 18:50:15
 Time Off Btm: 2014.11.12 @ 22:21:45

TEST COMMENT: B.O.B. in 15 min.
 Bled off for 5 min, No return blow
 B.O.B. in 22 min.
 Bled off for 5 min, No return blow

PRESSURE SUMMARY



Time (Min.)	Pressure (psig)	Temp (deg F)	Annotation
0	2000.76	102.82	Initial Hydro-static
1	24.78	101.98	Open To Flow (1)
31	105.76	115.81	Shut-In(1)
62	1066.74	117.84	End Shut-In(1)
62	107.24	117.19	Open To Flow (2)
122	240.46	123.78	Shut-In(2)
211	1087.14	122.07	End Shut-In(2)
212	1953.65	122.48	Final Hydro-static

Recovery

Length (ft)	Description	Volume (bbl)
199.00	mcw 30%M 70%O	2.79
252.00	100% Water	3.53

* Recovery from multiple tests

Gas Rates

	Choke (inches)	Pressure (psig)	Gas Rate (Mcf/d)



**TRILOBITE
TESTING, INC**

DRILL STEM TEST REPORT

FLUID SUMMARY

Shakespeare Oil Company, Inc.

22-17s-33w Scott Co, KS

202 West Street
Salem IL, 62881

Herron #1-22

Job Ticket: 57298

DST#: 2

ATTN: Mac Armstrong

Test Start: 2014.11.12 @ 16:25:00

Mud and Cushion Information

Mud Type: Gel Chem

Cushion Type:

Oil API:

deg API

Mud Weight: 9.00 lb/gal

Cushion Length:

ft

Water Salinity:

38000 ppm

Viscosity: 46.00 sec/qt

Cushion Volume:

bbbl

Water Loss: 7.99 in³

Gas Cushion Type:

Resistivity: ohm.m

Gas Cushion Pressure:

psig

Salinity: 5200.00 ppm

Filter Cake: 1.00 inches

Recovery Information

Recovery Table

Length ft	Description	Volume bbbl
199.00	mcw 30%M 70%O	2.791
252.00	100% Water	3.535

Total Length: 451.00 ft Total Volume: 6.326 bbl

Num Fluid Samples: 0

Num Gas Bombs: 0

Serial #:

Laboratory Name:

Laboratory Location:

Recovery Comments: RW: .60 @ 10 F = 38,000

Pressure vs. Time

