



DRILL STEM TEST REPORT

Prepared For: **McCoy Petroleum Corp.**

9342 E. Central
Wichita, KS 67206

ATTN: Dave Williams

Koehn "C" #1-20

20-30s-30w Gray,KS

Start Date: 2014.09.28 @ 20:28:00

End Date: 2014.09.29 @ 06:31:45

Job Ticket #: 56568 DST #: 1

Trilobite Testing, Inc
1515 Commerce Parkway Hays, KS 67601
ph: 785-625-4778 fax: 785-625-5620

Printed: 2014.10.02 @ 10:27:36



**TRILOBITE
TESTING, INC**

DRILL STEM TEST REPORT

McCoy Petroleum Corp.

20-30s-30w Gray, KS

9342 E. Central
Wichita, KS 67206

Koehn "C" #1-20

Job Ticket: 56568

DST#: 1

ATTN: Dave Williams

Test Start: 2014.09.28 @ 20:28:00

GENERAL INFORMATION:

Formation: **Chester**

Deviated: No Whipstock: ft (KB)

Time Tool Opened: 23:39:45

Time Test Ended: 06:31:45

Test Type: Conventional Bottom Hole (Initial)

Tester: Cornelio Landa III

Unit No: 67

Interval: 5272.00 ft (KB) To 5366.00 ft (KB) (TVD)

Reference Elevations: 2827.00 ft (KB)

Total Depth: 5366.00 ft (KB) (TVD)

2813.00 ft (CF)

Hole Diameter: 7.88 inches Hole Condition: Good

KB to GR/CF: 14.00 ft

Serial #: 8968 Outside

Press@RunDepth: 100.30 psig @ 5274.00 ft (KB)

Capacity: 8000.00 psig

Start Date: 2014.09.28

End Date:

2014.09.29

Last Calib.:

2014.09.29

Start Time: 20:28:05

End Time:

06:31:45

Time On Btm:

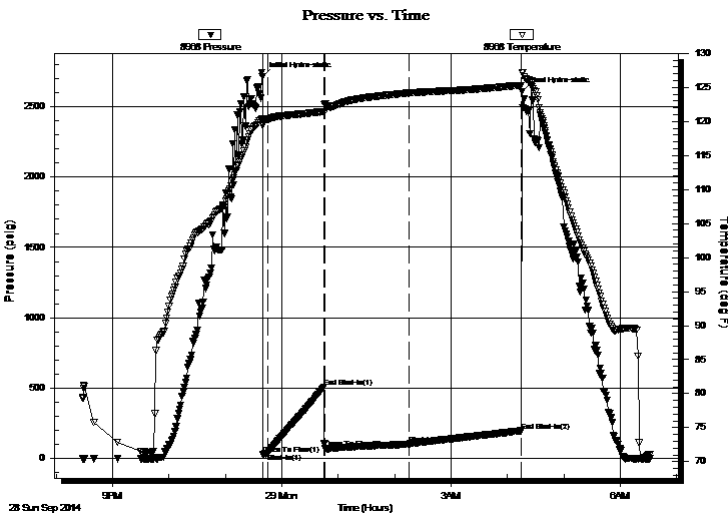
2014.09.28 @ 23:39:15

Time Off Btm:

2014.09.29 @ 04:15:45

TEST COMMENT: IF: 1 3/4". blow
IS: No return
FF: 2" blow in 15 min-Died in 44 min. into open
FS: Weak surface blow back-Died in 2 min.

PRESSURE SUMMARY



Time (Min.)	Pressure (psig)	Temp (deg F)	Annotation
0	2716.82	120.46	Initial Hydro-static
1	29.61	119.37	Open To Flow (1)
6	36.08	120.25	Shut-In(1)
66	508.02	121.46	End Shut-In(1)
67	70.94	122.46	Open To Flow (2)
156	100.30	124.18	Shut-In(2)
276	195.65	125.31	End Shut-In(2)
277	2608.70	127.18	Final Hydro-static

Recovery

Length (ft)	Description	Volume (bbl)
60.00	Ocm 5o 95m	0.30
65.00	Mud w/trace of oil	0.32

Gas Rates

	Choke (inches)	Pressure (psig)	Gas Rate (Mcf/d)



**TRILOBITE
TESTING, INC.**

DRILL STEM TEST REPORT

McCoy Petroleum Corp.

20-30s-30w Gray, KS

9342 E. Central
Wichita, KS 67206

Koehn "C" #1-20

Job Ticket: 56568

DST#: 1

ATTN: Dave Williams

Test Start: 2014.09.28 @ 20:28:00

GENERAL INFORMATION:

Formation: **Chester**

Deviated: No Whipstock: ft (KB)

Time Tool Opened: 23:39:45

Time Test Ended: 06:31:45

Test Type: Conventional Bottom Hole (Initial)

Tester: Cornelio Landa III

Unit No: 67

Interval: 5272.00 ft (KB) To 5366.00 ft (KB) (TVD)

Reference Elevations: 2827.00 ft (KB)

Total Depth: 5366.00 ft (KB) (TVD)

2813.00 ft (CF)

Hole Diameter: 7.88 inches Hole Condition: Good

KB to GR/CF: 14.00 ft

Serial #: 8969 Inside

Press@RunDepth: psig @ 5274.00 ft (KB)

Capacity: 8000.00 psig

Start Date: 2014.09.28

End Date:

2014.09.29

Last Calib.:

2014.09.29

Start Time: 20:28:05

End Time:

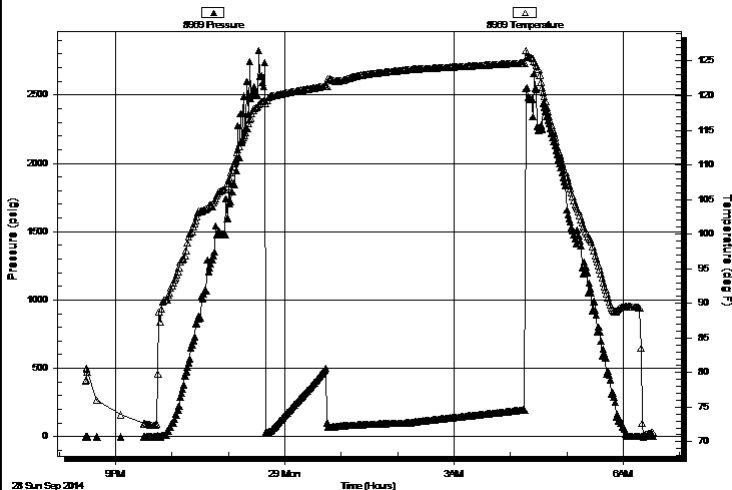
06:31:45

Time On Btm:

Time Off Btm:

TEST COMMENT: IF: 1 3/4". blow
IS: No return
FF: 2" blow in 15 min-Died in 44 min. into open
FS: Weak surface blow back-Died in 2 min.

Pressure vs. Time



PRESSURE SUMMARY

Time (Min.)	Pressure (psig)	Temp (deg F)	Annotation

Recovery

Length (ft)	Description	Volume (bbl)
60.00	Ocm 5o 95m	0.30
65.00	Mud w/trace of oil	0.32

Gas Rates

	Choke (inches)	Pressure (psig)	Gas Rate (Mcf/d)



**TRILOBITE
TESTING, INC**

DRILL STEM TEST REPORT

TOOL DIAGRAM

McCoy Petroleum Corp.

20-30s-30w Gray,KS

9342 E. Central
Wichita, KS 67206

Koehn "C" #1-20

Job Ticket: 56568

DST#: 1

ATTN: Dave Williams

Test Start: 2014.09.28 @ 20:28:00

Tool Information

Drill Pipe:	Length: 4971.00 ft	Diameter: 3.80 inches	Volume: 69.73 bbl	Tool Weight:	2500.00 lb
Heavy Wt. Pipe:	Length: 0.00 ft	Diameter: 0.00 inches	Volume: 0.00 bbl	Weight set on Packer:	28000.00 lb
Drill Collar:	Length: 300.00 ft	Diameter: 2.25 inches	Volume: 1.48 bbl	Weight to Pull Loose:	22000.00 lb
			<u>Total Volume: 71.21 bbl</u>	Tool Chased	0.00 ft
Drill Pipe Above KB:	26.00 ft			String Weight: Initial	86000.00 lb
Depth to Top Packer:	5272.00 ft			Final	86000.00 lb
Depth to Bottom Packer:	ft				
Interval between Packers:	94.00 ft				
Tool Length:	121.00 ft				
Number of Packers:	2	Diameter: 6.75 inches			

Tool Comments:

Tool Description

Length (ft) Serial No. Position Depth (ft) Accum. Lengths

Tool Description	Length (ft)	Serial No.	Position	Depth (ft)	Accum. Lengths
Change Over Sub	1.00			5246.00	
Shut In Tool	5.00			5251.00	
Hydraulic tool	5.00			5256.00	
Jars	5.00			5261.00	
Safety Joint	2.00			5263.00	
Packer	5.00			5268.00	27.00 Bottom Of Top Packer
Packer	4.00			5272.00	
Stubb	1.00			5273.00	
Change Over Sub	1.00			5274.00	
Recorder	0.00	8969	Inside	5274.00	
Recorder	0.00	8968	Outside	5274.00	
Drill Pipe	63.00			5337.00	
Change Over Sub	1.00			5338.00	
Perforations	25.00			5363.00	
Bullnose	3.00			5366.00	94.00 Bottom Packers & Anchor

Total Tool Length: 121.00



**TRILOBITE
TESTING, INC**

DRILL STEM TEST REPORT

FLUID SUMMARY

McCoy Petroleum Corp.

20-30s-30w Gray,KS

9342 E. Central
Wichita, KS 67206

Koehn "C" #1-20

Job Ticket: 56568

DST#: 1

ATTN: Dave Williams

Test Start: 2014.09.28 @ 20:28:00

Mud and Cushion Information

Mud Type: Gel Chem

Cushion Type:

Oil API:

deg API

Mud Weight: 9.00 lb/gal

Cushion Length:

ft

Water Salinity:

ppm

Viscosity: 62.00 sec/qt

Cushion Volume:

bbbl

Water Loss: 9.97 in³

Gas Cushion Type:

Resistivity: 0.00 ohm.m

Gas Cushion Pressure:

psig

Salinity: 1900.00 ppm

Filter Cake: 1.00 inches

Recovery Information

Recovery Table

Length ft	Description	Volume bbl
60.00	Ocm 5o 95m	0.295
65.00	Mud w /trace of oil	0.320

Total Length: 125.00 ft

Total Volume: 0.615 bbl

Num Fluid Samples: 0

Num Gas Bombs: 0

Serial #:

Laboratory Name:

Laboratory Location:

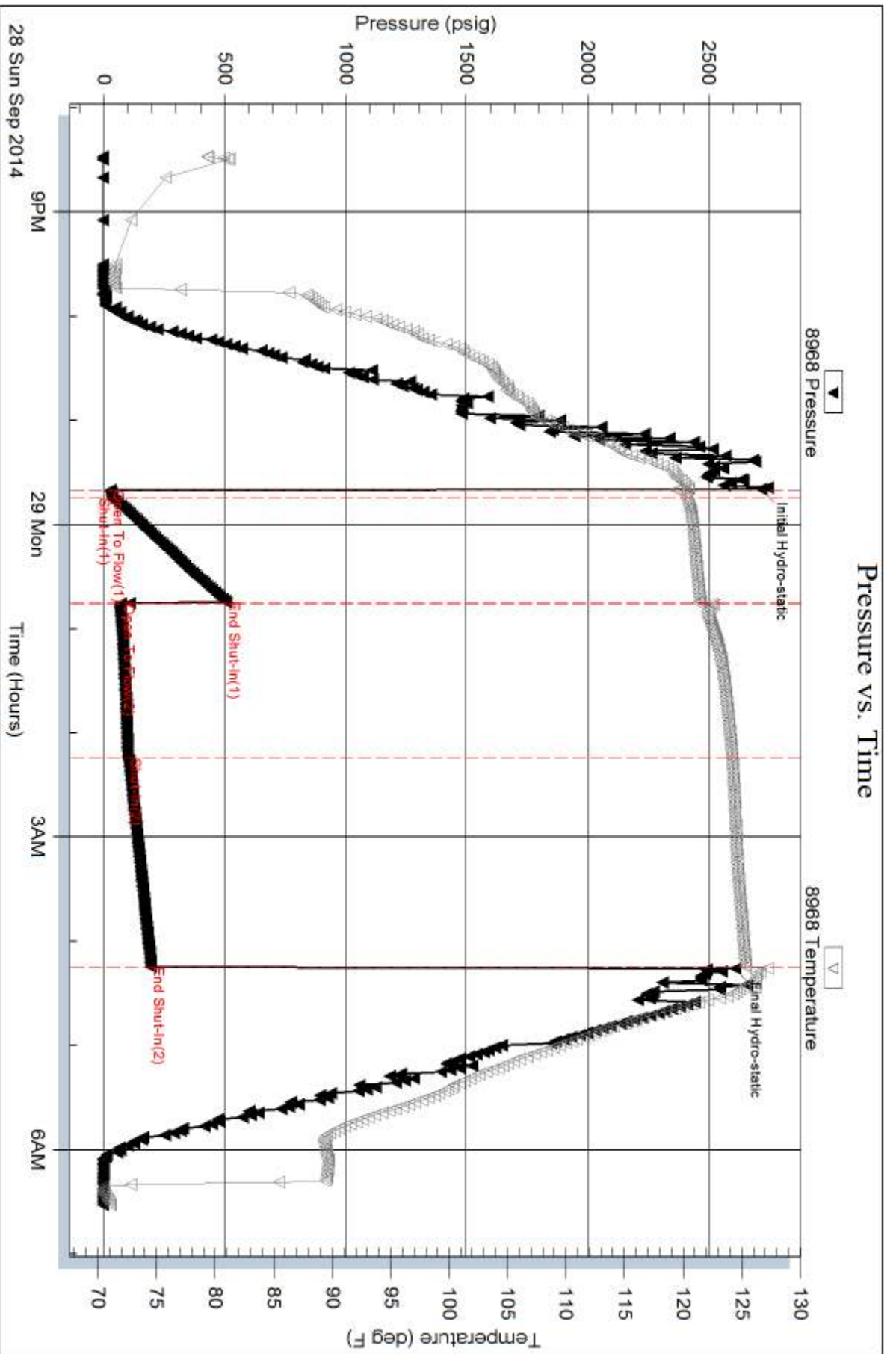
Recovery Comments:

Serial #: 8968

Outside McCoy Petroleum Corp.

Koehn "C" #1-20

DST Test Number: 1



Trilobite Testing, Inc

Ref. No: 56568

Printed: 2014, 10:02 @ 10:27:37

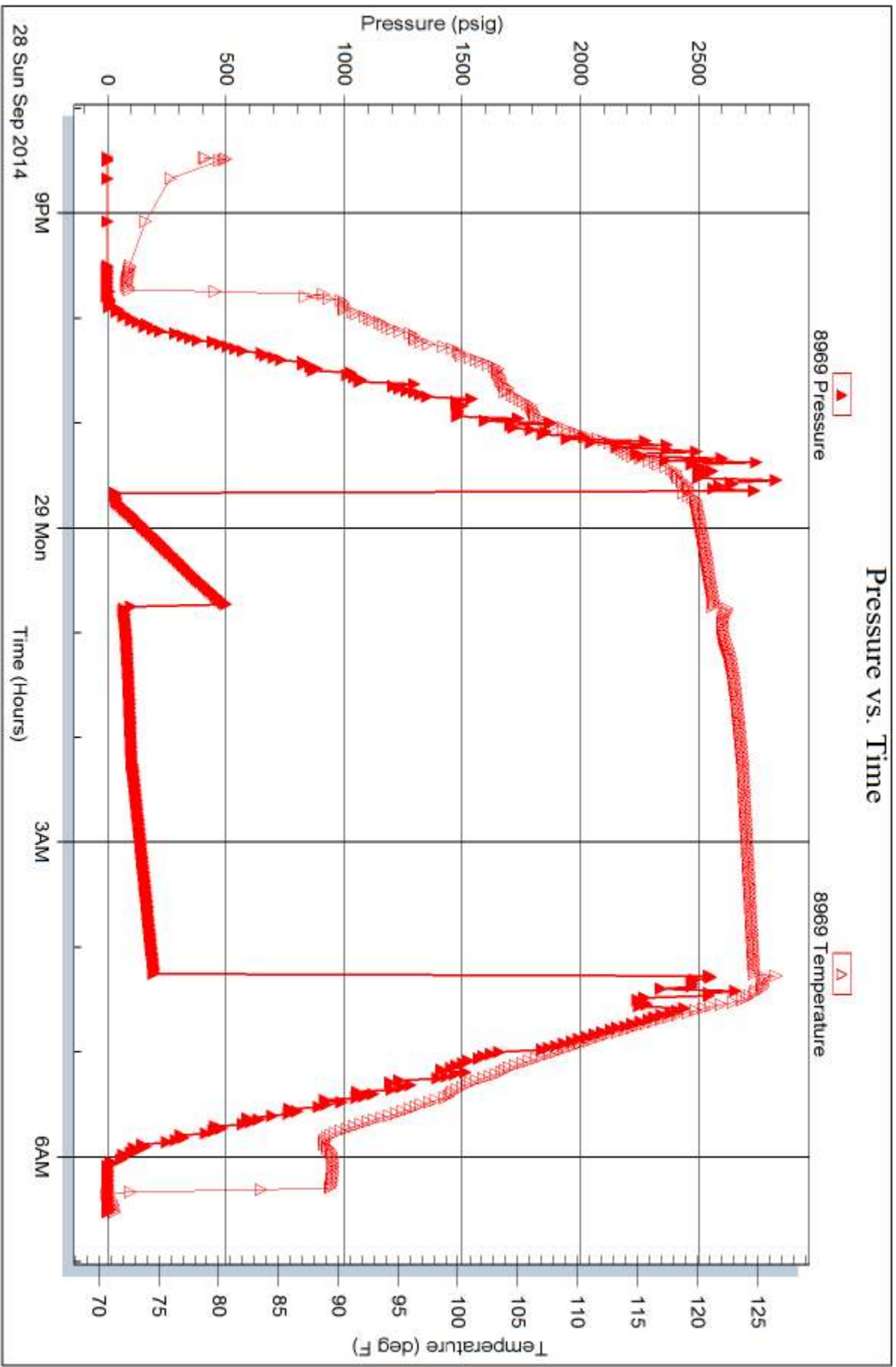
Serial #: 8969

Inside

McCoy Petroleum Corp.

Koehn "C" #1-20

DST Test Number: 1





TRILOBITE TESTING INC.

1515 Commerce Parkway • Hays, Kansas 67601

Test Ticket

NO. 56568

Well Name & No. Koehn "C" #1-20 Test No. 1 Date 9-28-14
 Company McCoy Petroleum Corporation Elevation 2827 KB 2813 GL
 Address 9342 E. Central - Wichita, KS 67206
 Co. Rep / Geo. Dave Williams Rig Sterling #5
 Location: Sec. 20 Twp. 30-S Rge. 30-W Co. Gray State KS

Interval Tested 5272-5364 Zone Tested Chester
 Anchor Length 94' Drill Pipe Run 4971 Mud Wt. 9.2
 Top Packer Depth 5268 Drill Collars Run 300 Vis 62
 Bottom Packer Depth 5272 Wt. Pipe Run 8 WL 10.0
 Total Depth 5364 Chlorides 1900 ppm System LCM #6

Blow Description IF: 1 3/4 Blow

ISE. No Return

FF: 2 in blow in 15 min - Died in 44 min. into open

FSI: Weak Surface Blowback - Died in 2 min.

Rec	Feet of	%gas	%oil	%water	%mud
<u>60</u>	<u>OCM</u>		<u>5</u>		<u>95</u>
<u>65</u>	<u>Mud w/Trace of oil</u>				<u>100</u>

Rec Total 125 BHT 127 Gravity _____ API RW _____ @ _____ ° F Chlorides _____ ppm

(A) Initial Hydrostatic 2717
 (B) First Initial Flow 30
 (C) First Final Flow 36
 (D) Initial Shut-In 508
 (E) Second Initial Flow 71
 (F) Second Final Flow 100
 (G) Final Shut-In 196
 (H) Final Hydrostatic 2409

- Test 1350
- Jars 250
- Safety Joint 75
- Circ Sub N/C
- Hourly Standby 8 1/2 hrs steady
- Mileage 120 ~~186~~
- Sampler _____
- Straddle _____
- Shale Packer _____
- Extra Packer _____
- Extra Recorder _____
- Day Standby 1d 8.5h
- Accessibility _____
- Sub Total 1861

T-On Location 19:50
 T-Started 20:28
 T-Open 23:40
 T-Pulled 04:15
 T-Out 06:32
 Comments on lockup @ 15:02 on 9/30/14

Initial Open 5
 Initial Shut-In 60
 Final Flow 90
 Final Shut-In 120

Ruined Shale Packer _____
 Ruined Packer 320
 Extra Copies _____
 Sub Total 800
 Total 2981
 MP/DST Disc't _____

Approved By

Dave Williams

Our Representative

Dave Williams