

ITC ENERGY SERVICES
 Consulting Geologist
 P.O. Box 5103
 Wichita, Kansas 67201
 316-285-6431

GEOLGISTS REPORT
 DRILLING TIME AND SAMPLE LOG

OPERATOR: **RITCHIE EXPLORATION, INC.**
 LEASE: **Huelsman** WELL NO. **1**
 FIELD: **Antelope Ridge**
 LOCATION: **550 FNL # 2040 FWL**
 SEC: **22** TWP: **13S** RGE: **31E**
 COUNTY: **Gove** STATE: **Kansas**

DATE: **01/21/14**
 DRILLING TIME FROM: **3600'** TO: **4590'**
 SAMPLES EXAMINED FROM: **3600'** TO: **4590'**
 SCALE: **3/8" = 1'**

DRILLING TIME FROM: **3600'** TO: **4590'**
 SAMPLES EXAMINED FROM: **3600'** TO: **4590'**
 SCALE: **3/8" = 1'**

PREPARATION: **1/20** LBS
 ANALYSIS: **1/20** LBS
 DUAL INDUCTION: **2310**

ANALYSIS: **2310**
 DUAL INDUCTION: **2310**

ANALYSIS: **2310**
 DUAL INDUCTION: **2310**

ANALYSIS: **2310**
 DUAL INDUCTION: **2310**

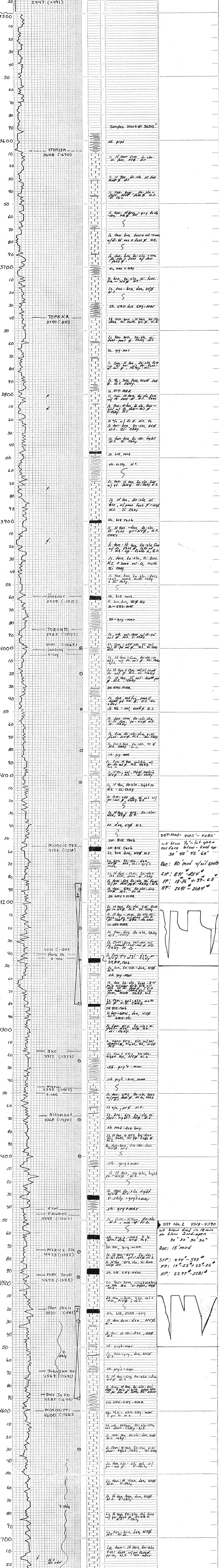
DEPTH	LOG	SIZE	TYPE	DEPTH	LOG	SIZE	TYPE
8-25-14	1/2" x 1/2"	1/2"	SM	218	218	218	N/A
8-26-14	3/8" x 3/8"	3/8"	SM	218	218	218	N/A
8-27-14	3/8" x 3/8"	3/8"	SM	218	218	218	N/A
8-28-14	3/8" x 3/8"	3/8"	SM	218	218	218	N/A
8-29-14	3/8" x 3/8"	3/8"	SM	218	218	218	N/A
8-30-14	3/8" x 3/8"	3/8"	SM	218	218	218	N/A
8-31-14	3/8" x 3/8"	3/8"	SM	218	218	218	N/A
9-01-14	3/8" x 3/8"	3/8"	SM	218	218	218	N/A

DEPTH	LOG	SIZE	TYPE	DEPTH	LOG	SIZE	TYPE
1	4185-4201	1/2"	SM	218	218	218	N/A
2	4201-4217	3/8"	SM	218	218	218	N/A
3	4217-4233	3/8"	SM	218	218	218	N/A
4	4233-4249	3/8"	SM	218	218	218	N/A
5	4249-4265	3/8"	SM	218	218	218	N/A
6	4265-4281	3/8"	SM	218	218	218	N/A
7	4281-4297	3/8"	SM	218	218	218	N/A
8	4297-4313	3/8"	SM	218	218	218	N/A
9	4313-4329	3/8"	SM	218	218	218	N/A
10	4329-4345	3/8"	SM	218	218	218	N/A
11	4345-4361	3/8"	SM	218	218	218	N/A
12	4361-4377	3/8"	SM	218	218	218	N/A
13	4377-4393	3/8"	SM	218	218	218	N/A
14	4393-4409	3/8"	SM	218	218	218	N/A
15	4409-4425	3/8"	SM	218	218	218	N/A
16	4425-4441	3/8"	SM	218	218	218	N/A
17	4441-4457	3/8"	SM	218	218	218	N/A
18	4457-4473	3/8"	SM	218	218	218	N/A
19	4473-4489	3/8"	SM	218	218	218	N/A
20	4489-4505	3/8"	SM	218	218	218	N/A
21	4505-4521	3/8"	SM	218	218	218	N/A
22	4521-4537	3/8"	SM	218	218	218	N/A
23	4537-4553	3/8"	SM	218	218	218	N/A
24	4553-4569	3/8"	SM	218	218	218	N/A
25	4569-4585	3/8"	SM	218	218	218	N/A
26	4585-4601	3/8"	SM	218	218	218	N/A

with all oil shows tested negative and negative log calculations in other potential zones. The Nol. Huelsman was declared dry and abandoned on 9-1-2014.
 Respectfully,
 J. J. J. J.
 Petroleum geologist

LEGEND

SCALE 1" = 100'



COMPANY: **RITCHIE EXPLORATION, INC.**
 LEASE: **NO. 1 HUELSMAN**
 LOCATION: **550 FNL # 2040 FWL SEC. 22, TWP. 13S, R. 31E**
 COUNTY: **Gove** STATE: **Kansas**
 ELEVATION: **2938 K.B.**