



**Natural Gas • Crude Oil
Exploration & Production**

McCOY PETROLEUM CORPORATION

Wichita, Kansas

Scale 1:240 (5"=100') Imperial
Measured Depth Log

Well Name: Sealey 'A' #1-15
API: 15-097-21809-00-00
Location: Sec. 15 - T30S - R19W, Kiowa County, KS
License Number: 5003
Spud Date: Oct 9, 2014
Surface Coordinates: N2 SW SE
990' FSL & 1980' FEL
Region: Alford South
Drilling Completed: 10/18/2014
Bottom Hole Coordinates:
Ground Elevation (ft): 2264' K.B. Elevation (ft): 2273'
Logged Interval (ft): 648' To: 5225' Total Depth (ft): RTD: 5225' LTD: 5225'
Formation: Mississippian
Type of Drilling Fluid: Chemical/Polymer/Gel

Printed by MUD.LOG from WellSight Systems 1-800-447-1534 www.WellSight.com

OPERATOR

Company: McCoy Petroleum Corporation, KCC License #5003
Address: 9342 E Central
Wichita, KS 67206

GEOLOGIST

Name: Zach Wiele
Company: McCoy Petroleum Corporation
Address: 9342 E. Central
Wichita, KS 67206

Casing & Deviation Surveys:

Spud at 9:00 am on 10/09/14

1st Surface Casing String:

Spud at 9:00 am on 10/09/14. Drilled 17-1/2" hole to 255'. Ran 7 joints of 48# ; 13-3/8" surface casing. Tallied 240.94", set at 252' KB). Strapped guide shoe and bottom 3 joints. Welded collars on 4 joints. Cemented with 350 sks 60/40 POZ; 2% Gel; 3% CC; 1/4# CF. Plug down at 5:30 pm on 10/09/14. Cement did circulate. Basic Energy Svcs cementing ticket #11213.

2nd Casing String:

Drilled 12-1/4" hole to 648'. Ran 15 joints of new 23# 8-5/8" surface casing. Tallied 644.39'. Landed at 644' KB. Strapped guide shoe and bottom 3 joints. Tacked collars on all, then welded collar on top 3 joints. Cemented with 170 sks A-Conn; 3% CC, 1/4# CF and tailed with 150 sks 60/40 POZ; 2% Gel, 3% CC, 1/4# CF. Cement did circulate. Basket at 222' KB. Basic Energy Svcs Cementing # 11214. Plug down at 3:00 pm on 10/10/14.

Day 3:10/10/14

"Drilling 12-1/4" hole at 490' at 7 am. Drilled 490' in 24 hours.

Ran 6.25 Hours, Down 17.75 hours

(1.00 Rig up, 1.00 Set RH/MH, .50 repairs, 2.75 Jet & Conn, .75 Survey/CTCH/Wiper trip, .50 Trip out, 3.00 Run/Cement 13-3/8" csg,8.00 WOC, .25 Drill cement plug).

Deviation Surveys Taken: @ 255' = 3/4 Degree; @ 648' = 1 1/2 Degree; @ 5132' = 1/2 Degree; @ 5225' = 3/4 Degree

DRILL STEM TEST

DST #1

Interval: 5081' - 5132' Times: 5" - 60" - 90" - 120"

IF: BOB in 5 sec ISI: No Blow Back

FF: GTS/ 3.5" FSI: Wk-Fair Blow increas to 5 in

Rec: 125' GMCO (46%g, 12%m, 42%o)

190' GMCO (30%g, 34%m, 36%o)

Pressure:

HS: 2676 - 2648

FP: 54 - 61

SIP: 1090 - 962 #

Gauge: mcf/d

10" = 27.6 20" = 27.630" = 28.4

40" = 28.450" = 27.660" = 26

70" = 2680" = 26 90" = 24.4

ROCK TYPES

LITHOLOGY

	Char-grn sh
	Anhy
	Brec
	Cht
	Clyst
	Dol
	Gyp

	Lmst
	Drk gry sh
	Ss
	Congl
	Blk carb sh
	Grn sh
	Brn sh
	Red sh

	Gry sh
TEXTURE	
	Boundst
	Chalky
	Cryxln
	Earthy
	Finexln

Grainst
Lithogr
Microxln
Mudst
Packst
Wackest

OIL SHOW

	Even
	Spotted
	Ques
	Gas
	Dead

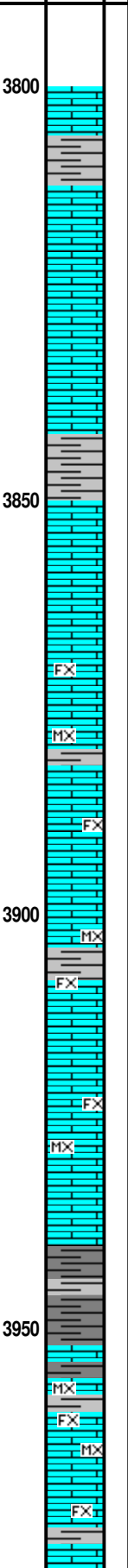
Sealey 'A' #1-15
 ROP (min/ft) ———
 Gamma (API) - - - -

TG
 C1
 C2
 C3
 C4

Depth
 Lithology
 Oil Shows

Geological Descriptions

ROP (min/ft)
 Gamma (API)



McCoy Petroleum Corporation

Well: **Sealey 'A' #1-15**

Location: **Sec. 15 - T. 30 S - R. 19 W
 N2 SW SE
 990' FSL & 1980' FEL
 Alford South Area
 Kiowa County, KS**

API #: **15-097-21809-00-00**

Elevation: **KB: 2273' GL: 2264'**

Contractor: **Sterling Drilling : Rig #4**

Geologist: **Zach Wiele**

GEOLOGIST ON LOCATION @: 4250' 10:30 P.M. on 10/15/2014

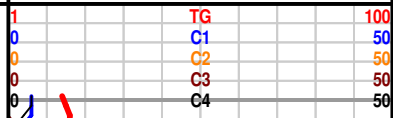
31' Kelly Down Samples @ 3900'

Ls Crm-Wht, FxIn micrite grad poor inxIn Por, Sh Gry-Mrn, soft, trc Pyr
 Inklus, no odr, no flor, no stn, NS

Ls Wht- Crm, FxIn micrite grad poor InxIn por, Sh Gry-Aqua-Mrn, soft no
 odr, no flor, no stn, NS

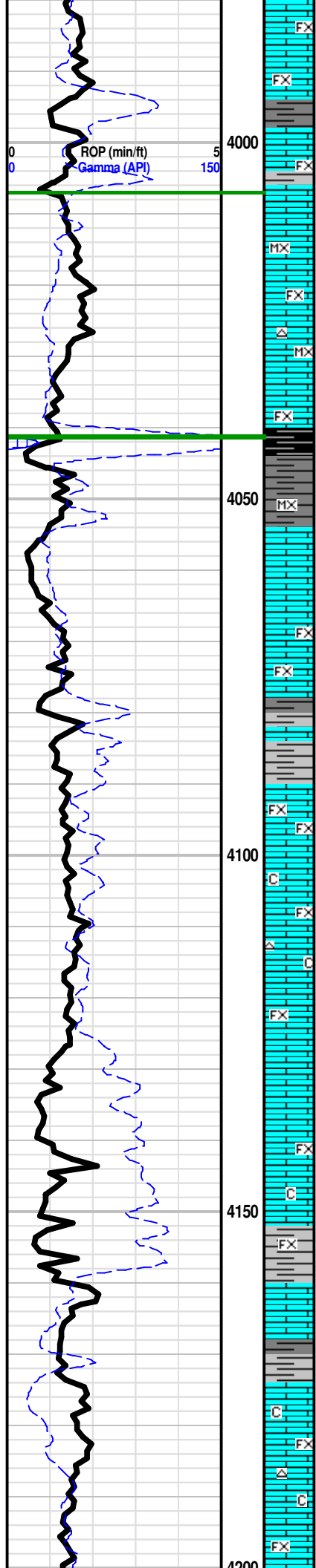
Ls Crm-Wht-Lt Gry, FxIn micrite grad poor PP InxIn por, scat vugs, Trc
 oolitic (2 Pc), Sh Gry-Char-Mrn-Aqua, soft silty, no odr, no flor, no stn, NS

Ls Wht-Crm-Gry, FxIn poor PP InxIn Por, scat vugs, sli foss, Sh
 Gry-Mrn-Grn, soft, trc Chrt Wht-Gry, op, shp, fresh, Mass Pyr, no odr,
 no flor, no stn, NS



**MUD DISPLACEMENT
 @ 3646'**

Mudco Ck @
 3,646' @ 9:00
 AM 10/15/14
 Vis=63;
 WT=8.8#;
 PV=16; YP=
 18; WL=9;
 Cake=1;
 Chl=5000; Cal
 =80 ;
 Sol=3.3%
 LCM= 3#;
 DMC=\$
 1,940.60
 CMC=\$
 10,456.95



Ls Wht-Crm-Gry, FxIn, micrite grad poor InxIn Por, trc vug por, sli chlky, Chrt Wht-Gry, op shp vit, sli foss, Sh Gry-Mrn, soft silty fiss, no odr, no flor, no stn, NS

LECOMPTON 'B' 4007' (-1734)

Ls Wht-Gry, F-VFxn micrite, trc poor PP InxIn Por, w/few Pyr-Inclus, Sh Gry-Char-Mrn, soft, Chrt Gry-Wht op shp vit, no odr, no flor, no stn, NS

QUEEN HILL 4041' (-1768)

Sh Blk Carb-Gry-Mrn-Aqua, soft fiss, Ls Wht-Crm, Micro-FxIn, dns micrite grad poor PP InxIn/vug Por, sli chlky, trc Chrt Wht-Gry op shp, no odr, no flor, no stn, NS

Ls Wht-Crm-Lt Gry, FxIn micrite grad sub-fair InxIn Por w/ sml-med dis vugs, sli chlky w/Pyr-inclus, Sh Gry-Char-Blk Carb, soft, trc Chrt Gry-Wht op shp, scat foss(fuss), no odr, no flor, no stn, NS

Ls Wht-Crm, MicroxIn micrite, trc dis vugs, sli oolitic(3 Pc), chlky, Sh Blk Carb-Gry-Red-Aqua, soft, Chrt Gry-Wht op shp, no odr, no flor, no stn, NS

Ls Wht-Lt Gry, Micro-FxIn, dns micrite, few w/poor InxIn Vug Por, Sh Char-Gry-Mrn-Grn, soft, trc Chrt Gry op shp fresh, trc Pyr-Inclus, no odr, no flor, no stn, NS

Sh Gry-Char, soft, Ls Wht-Crm, FxIn micrite grad poor InxIn Por w/scat vugs, chlky, Mass Pyr, no odr, no flor, no stn, NS

Ls, Wht-Crm-Gry, F-MicroxIn micrite grad vpoor InxIn Por, chlky, Sh Gry-Mrn, soft silty, sli foss, no odr, no flor, no stn, NS

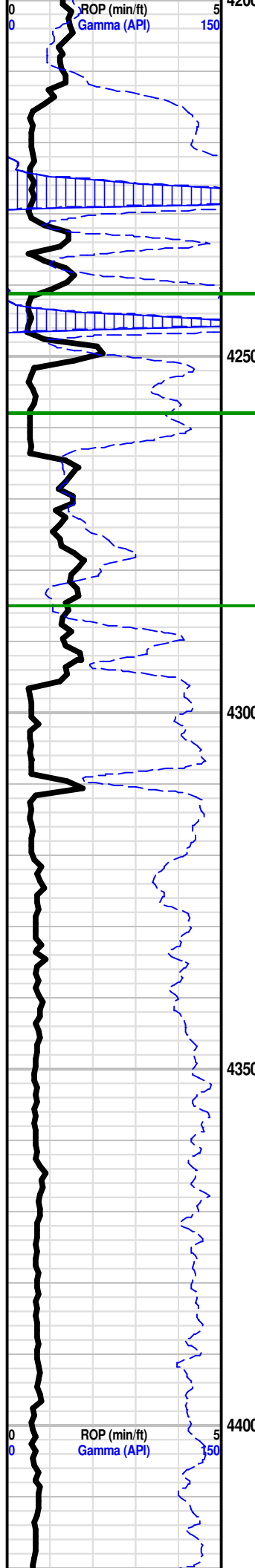
Scale Change

TG	100
C1	900
C2	900
C3	900
C4	50

Scale Change

TG	100
C1	50
C2	50
C3	50
C4	50

Vis: 60
 WT: 9.1
 LCM: 1#
 WOB: 16,000+
 RPM: 80+
 PP: 1000#
 SPM: 70



4260' No Sample Caught

HEEBNER 4241' (1968)

Sh Char-Gray-Mrn-Blk Carb, fiss soft w/pyr-inclus, Ls Wht-Crm-Gry, FxIn dns micrite, poor InxIn Por, chlky, no odr, no flor, no stn, NS

TORONTO 4258' (-1985)

Sh Char-Gry-Red-Mrn, soft fiss, Ls Wht-Crm F-MicroxIn micrite, poor PP InxIn Por, chlky, Mass Pyr, no odr, no flor, no stn, NS

DOUGLAS 4285' (-2012)

Sh Gry-Char-Grn-Red, soft silty, Ls Wht-Cry-Lt Gry, FxIn micrite, poor PP InxIn por, Sli Foss(crin), Chlky, no odr, no flor, no stn, NS

Sh Gry-Drk Gry-Char, silty, sli sndy w/mica, Ls Wht-Crm-Gry, FxIn dns micrite grad poor InxIn por w/scat vugs, chlky, Qtz Ss Wht-Lt Gry, Fgrn well sort, sub ang, no odr, no flor, no stn, NS

Sh Gry-Lt Brn-Char, soft silty AA, Ls Wht-Gry-Lt Tan, FxIn dns micrite grad poor PP InxIn Por w/trc pyr-inclus, chlky, Trc Qtz Ss Wht-Lt Gry AA, no odr, no flor, no stn NS

Sh Gry-Lt Gry-Lt Brn-Grn, soft silty in pt, Trc Qtz Ss AA, Ls Wht-Crm, F-MicroxIn micrite No Vis Por, (trc amt), no odr, no flor, no stn, NS

Gas Test @ 4248' Lag
Depth 114 Units
10/16/14

Vis: 51
WT: 9.2
LCM: 1#

Vis: 54
WT: 9.3 LCM:
1 1/2 #

BROWN LIME 4420' (-2147)

LANSING 4434' (-2161)

Sh Gry-Lt Gry, soft silty w/pyr-inclus, Ls Gry-Tan-Crm-Wht, F-MicroIn micrite grad poor InxIn Por, no odr, no flor, no stn, NS

LANSING 'B' 4460' (-2187)

Ls Wht-Gry-Tan, F-MicroIn micrite, poor PP InxIn Por w/scat vugs, Sh Gry-Grn soft fiss, no odr, no flor, no stn, NS

Gas Line Plugged
Replaced Line and Filter

Ls, Wht-Crm-Gry, F-MicroIn dns micrite grad vpoor InxIn Por, 1 pc w/poor oomold por, Sh Gry-Chr-Grn, soft silty w/pyr-inclus, no odr, no flor, no stn, NS

LANSING 'F' 4558' (-2285)

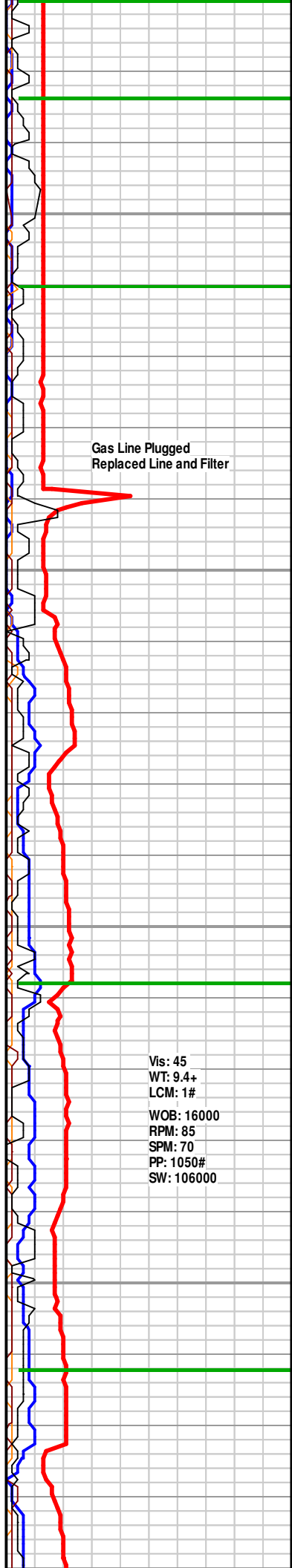
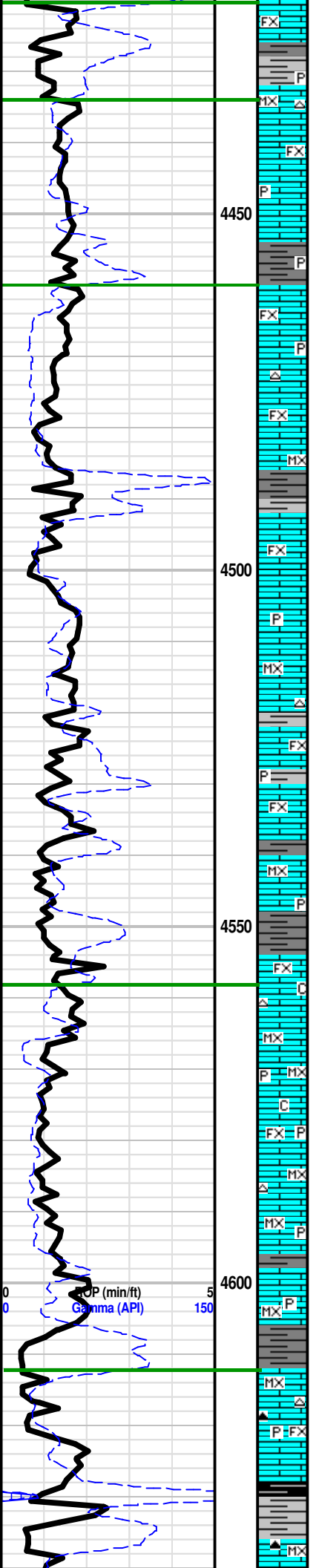
Ls Crm-Tan-Wht, Vf-MicroIn dns micrite, poor PP InxIn/Gran Por, chlky, Sh Gry-Brn-Red, soft silty, sli trc Chrt Tan op shp, mass pyr, foss(crin), no odr, no flor, no stn, NS

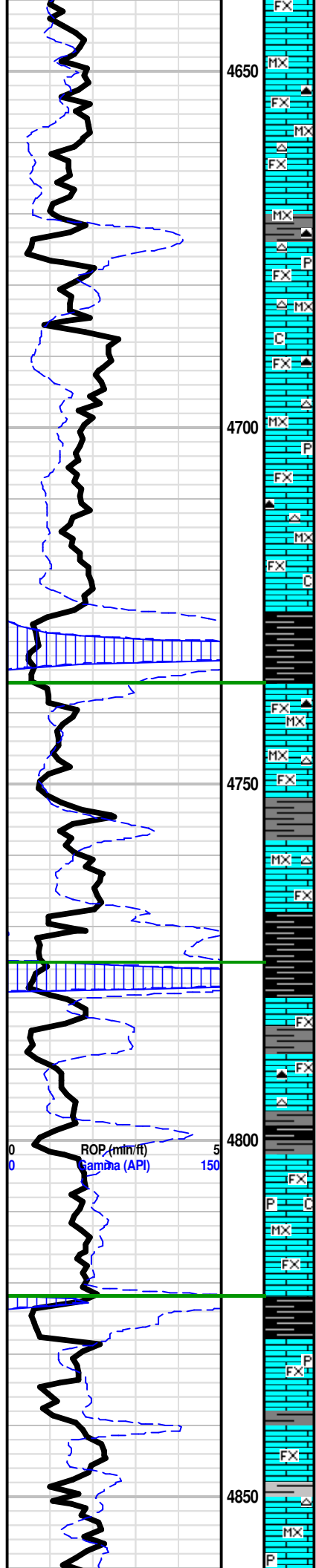
Ls Wht-Crm-Lt Tan, MicroIn dns micrite w/foss-chrt inclus, chlky, Sh Gry-Mrn-Red, soft, Chrt Gry-Tan-Wht op shp vit, mass pyr, no odr, no flor, no stn, NS

Vis: 45
WT: 9.4+
LCM: 1#
WOB: 16000
RPM: 85
SPM: 70
PP: 1050#
SW: 106000

KANSAS CITY 'H' 4612' (-2373)

Ls, Tan-Crm-Wht, F-MicroIn micrite grad poor PP InxIn Por, poor-fair InxIn/oomold por w/ dis vugs(< 3% in tr), chlky, Chrt Gry-Wht op shp vit w/foss inclus(crin), Sh Gry-Mrn, soft fiss, no odr, no flor, no stn, NS





4650 Ls Crm-Lt Tan-Wht, FxIn micrite grad poor InxIn Por, Trc poor oomold/vug por, (2 pc w/good oomold dis vug por) sli pyr inclus, chlky, Sh Gry-Lt Brn, soft silty, mass pyr, no odr, no flor, no stn, NS

Ls Wht-Crm-Tan-Gry, FxIn micrite grad poor PP InxIn Por, Oolitic Ls w/ poor-good PP InxIn oomold Por w/ good dis vugs, Abd GB (w/10%HCl), GB Did Flor, Chrt Tan-Wht-Gry transl-op shp vit w/foss inclus(crin), no odr, sli flor, no stn, SGB, NS

4700 Ls Tan-Crm, Micro-FxIn micrite(mainly), poor-fair PP InxIn/Dis Vug Por, w/ foss & chrt inclus, Chrt Tan-Gry-Wht op shp vit w/wht foss inclus, Sh Gry-Char, soft fiss, no odr, no flor, no stn, NS

Ls Crm-Lt Tan, Micro-FxIn dns micrite, Trc poor PP InxIn Por, Sh Gry-Lt Brn-Mrn, soft fiss, Chrt Gry-Tan-Wht, transl-op shp vit, Mass Pyr, no odr, no flor, no stn, NS

Sh Blk Carb(w SSGb)-Gry, fiss, Ls Crm-Wht, VF-MicroxIn dns micrite, scat pyr inclus, few w/small dis vugs, Chrt AA, no odr, no flor, SGB in Blk Sh

KANSAS CITY 'J' 4735' (-2462)

4750 Sh Blk Carb(w/SGB)-Gry-Char, soft fiss silty, Ls Crm-Gry-Wht, MicroxIn dns micrite grad poor PP por, Chrt Tan-Wht, trans-op shp vit, no odr, no flor, no stn, NS

Ls Crm-Wht-Lt Gry, F-MicroxIn dns micrite, no vis pos, Chlky, Sh Char-Gry-Grn-Red, fiss silty, Chrt Gry-Wht Trns-op shp, no odr, no flor, no stn, NS

Ls Crm-Tan-Lt Gry, MicroxIn dns micrite, sli foss(crin), Chlky, Sh Gry-Aqua-Blk Carb, soft fiss, Chrt AA, no odr, no flor, no stn, NS

STARK 4775' (-2502)

4800 Sh Blk Carb(w/SGB)-Gry, soft fiss, Ls Lt Gry-Wht-Crm, Micro-FxIn Dns Micrite, no odr, no flor, no stn, NS

Ls Wht-Crm-Gry, F-MicroxIn, dns micrite grad poor PP por, sli trc poor oomold por, scat pyr & foss inclus, Chlky, Sh Blk Carb-Gry-Brn-Grn, fiss w/strks pyr, no odr, no flor, no stn, NS

Sh Gry-Blk Carb, soft fiss, Ls Wht-Gry-Crm, Micro-FxIn, dns micrite, no vis por, Chrt Wht-Gry-Tan op shp vit, no odr, no flor, no stn, NS

Ls Gry-Tan-Crm, VF-MicroxIn dns micrite, Sh Gry-Grn-Red, soft, Chrt Tan op shp vit, no odr, no flor, no stn, NS

Ls Gry-Tan-Wht, FxIn Micrite grad poor PP InxIn Por, Trc fair PP InxIn sucro por, v fri, Sh Blk Carb-Gry-Grn-Mrn, soft w/pyr & chrt inclus, no odr, no flor, no stn, NS

HUSHPUCKNEY 4822' (-2549)

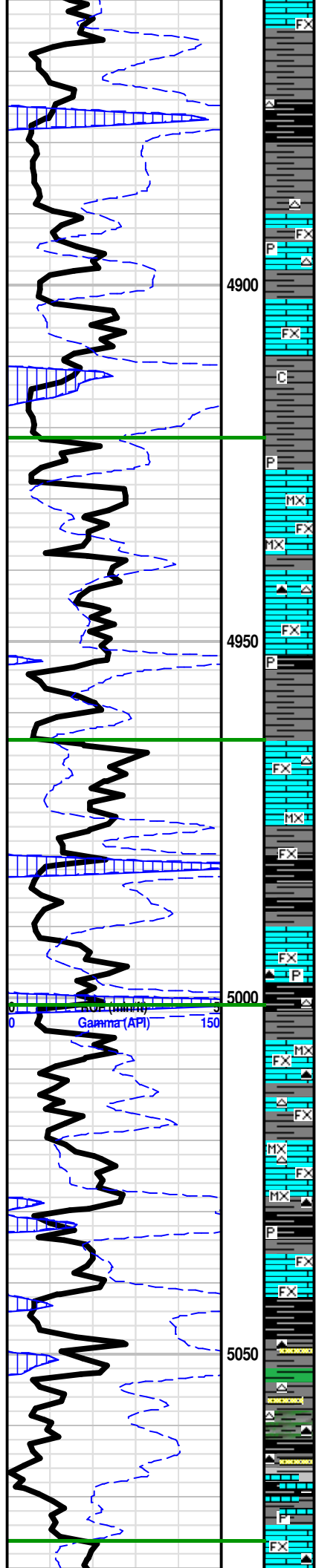
4850 Sh Blk Carb-Gry-Aqua, soft fiss silty, Ls Gry-Crm-Wht, FxIn micrite, Poor InxIn Por w/ silic & pyr inclus, no odr, no flor, no stn, NS

Ls Wht-Tan Gry, FxIn micrite grad poor PP InxIn Por, scat chrt & precipitated grn inclus, Chrt Gry-Wht op shp vit w/foss inclus(crin), Sh Gry-Drk Gry, fiss, no odr, no flor, no stn, NS

Ls Lt Tan-Gry-Wht, FxIn micrite, poor-fair PP InxIn Por w/gd dis vugs devlp, Chrt Gry-Tan op shp vit w/foss inclus, Sh Gry-Grn-Mrn, soft, no

Mudco Ck @ 4653' @ 9:30 AM 10/16/14 Vis=47; WT=9.4#; PV=15; YP= 16; WL=13.2; Cake=2; Chl=9000; Cal =80 ; Sol=7.3% LCM= TRC.#; DMC=\$ 2,020.85 CMC=\$ 12,477.80

SW: 112,000 WOB: 16-18 RPM: 85-90 SPM: 70 PP: 1030# Vis: 43 WT: 9.3 LCM: 3#



odr, no flor, no stn, NS

Sh Blk Carb(w/SSGB)-Char-Gry-Grn, soft fiss silty w/pyr inclus, Ls Gry-Lt Tan-Wht, F-MicroxIn Micrite, poor PP InxIn Por, Chrt Gry op shp vit, no odr, no flor, no stn, NS

Sh Gry-Brn-Grn-Char- soft fiss silty, Ls Crm-Gry, Micro-FxIn dns micrite, Chrt Wht-Gry trans-op shp pitted vit, scat pyr inclus, no odr, no flor, no stn, NS

Sh Gry-Grn-Brn-Aqa, fiss silty, Ls Gry-Lt Tan, FxIn micrite, poor InxIn por w/fair devlp dis vugs, Chrt AA, no odr, no flor, no stn, NS

4900

Ls Crm-Wht-Gry, FxIn, micrite grad poor InxIn Por, Sh Gry-Drk Gry, (abd) fiss, Chrt Wht-Gry Trns-op shp vit, Mass pyr, no odr, no flor, no stn, NS

Ls Gry-Crm-Tan F-MicroxIn dns micrite, no vis por, Sh Gry-Char-Grn, soft w/pyr inclus, no odr, sli mineral flor, no stn, NS

MARMATON 'B' 4921' (-2648)

Ls Wht-Lt Gry-Crm, Micro-FxIn dns micrite, no vis por, Sh Gry-Grn -Blk Carb, soft fiss silty, scat foss(crin,fuss), no odr, no flor, no stn, NS

Ls Wht-Crm-Gry, FxIn micrite grad poor PP InxIn Por, Sh Gry-Char-Aqua, fiss, Mass Pyr, Scat Chrt w/foss inclus, no odr, no flor, no stn, NS

4950

Ls Tan-Crm, M-FxIn, dns micrite, dns grad poor-fair PP InxIn Por, v frible, sli foss inclus, Sh Gry-Aqua -Red, soft, trc Chrt Wht Trnls-op shp vit, no odr, no flor, no stn, NS

PAWNEE 4964' (-2691)

Ls Wht-Crm, FxIn dns micrite, trc poor devlp dis vugs, Sh Blk Carb-Gry, soft fiss, scat foss, no odr, no flor, no stn, NS

Ls Wht-Crm-Gry, FxIn micrite, poor PP por, Sh Gry-Brn-Red, soft, no odr, no flor, no stn, NS

Sh Blk Carb(w/SSGB)-Gry-Aqua-Red, fiss, Ls Crm-Tan-Gry, F-MicroxIn dns micrite, vpoor InxIn por, Scat Chrt w/pyr & foss inclus, no odr, no flor, no stn, NS

CHEROKEE 5001' (-2728)

Sh Blk Carb-Char-Gry-Grn, soft fiss w/pyr inclus, Ls Gry-Crm-Wht, F-MicroxIn, poor InxIn por, no odr, no flor, no stn, NS

30" CFS @ 5034" Ls Crm-Gry-Wht, Micro-FxIn w/foss inclus(crin), dns micrite grad poor PP InxIn por, Sh Blk Carb-Gry, soft fiss, no odr, no flor, no stn, NS

60" CFS @ 5034' Sh Blk Carb-Gry-Lt Brn-Mrn, soft fiss, Ls Crm-Tan-Wht, F-MicroxIn dns micrite, poor InxIn, scat pyr & foss inclus, no odr, no flor, no stn, NS

5050

Sh Blk Carb-Gry-Grn-Brn-Aqua, soft silty, Ls Crm-Tan-Gry, FxIn/Grn w/pyr & foss inclus, poor PP InxIn por, Chrt Gry-Wht op shp vit, no odr, no flor, no stn, NS

Sh Blk Carb-Gry-Grn-Yel-Aqua-Purp, soft silty, Ls Crm-Tan-Gry, FxIn w/Grn pyr & foss inclus, poor PP InxIn por, Chrt Gry-Wht op shp vit, no odr, no flor, no stn, NS

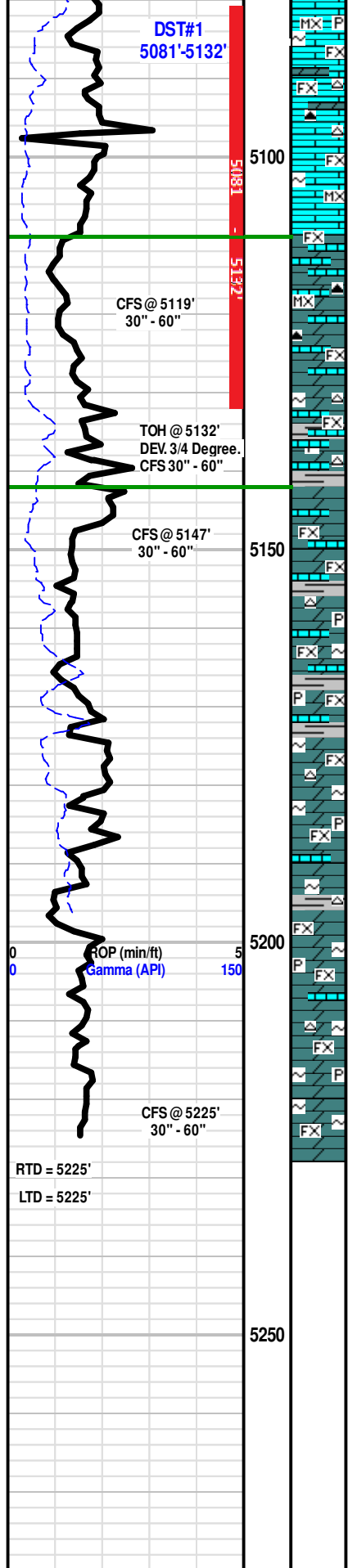
Sh Blk Carb-Gry-Grn-Yel-Aqua-Purp, soft silty w/pyr inclus & banded chrt, Ls Crm-Tan-Gry, FxIn w/Grn pyr & foss inclus, poor PP InxIn por, Chrt Gry-Wht op shp vit, no odr, no flor, no stn, NS

MISSISSIPPIAN 5076' (-2803)

Ls Wht-Crm-Tan, F-MicroxIn, poor fair PP InxIn Por, w/pyr & glue inclus

25 Stand Short Trip @ 5034' CFS30" & 60"

**** DST #1 ****
 5081' - 5132'
 Time: 5 - 60 - 90 - 120
 IF: BOB in 5 sec
 ISI: No Blow Back
 FF: GTS/3.5 min
 FSI: Wk To Fair Blw Increase to 5"
 Rec: 125' GMCO (46g,12m,42o)
 190' GMCO (20g,8m,26o)



LS Wht-Crm-Tan, F-MicroXln, poor-fair PP Inxln Por, w/ pyr & gluc inclus, Sh Gry-Grn-Aqua-Oliv-Char, soft silty pyr inclus, Chrt Wht-Gry-Org trans-op shp vit, no odr, scat mineral flor, no stn, NS

30'CFS @ 5119' Ls Wht-Tan-Crm, F-Microxln, poor-fair-Gd PP Inxln sucro Por, vry brittle/fri, dolomitic w/gluc inclus, med odr, Brght Grn/Yello Flor,(7-10% of tray), SGB & FO (abd aft 10%HCL), strky brn stn, fast streaming flor cut, Good Show FO & GB

SPERGEN Ø 5110' (-2837)

60" CFS @ 5119' Dol/Ls, Tan-Crm-Gry, Fxln, Fair-Good PP Inxln sucro Por, w/sli trc Gluc inclus, fair-gd odr, scat Bright Grn/Yellow flor (5%of tray), SGB & FO (aft 10% HCl), mod-fast streaming flor cut, scat strky brn stn, Good Show FO & GB

30" CFS @ 5132' Dol-Ls, Tan-Crm-Gry, Fxln w/ Good PP Inxln Sucro Por, strng odr, Yel/Grn flor(20% of tray), ExInt SFO in smpl tray(vry abd), Good SGB in tray, strky-sat brn stn, Good Show Free Oil & Gas

60" CFS @ 5132' Dol-Ls, Tan-Crm-Gry, Fxln w/ Good PP Inxln Sucro Por, strng odr, Yel/Grn flor(20% of tray), ExInt SFO in smpl tray(vry abd), Good SGB in tray, strky-sat brn stn, Good Show Free Oil & Gas

WARSAW 5142' (-2869)

60" CFS @ 5147' Dol/Ls Crm-Wht-Lt Gry, F-MicroXln, micrite grad poor-fair PP Inxln Por, Sh Gry-Lt Grn-Brn-Blk Carb, fiss pyr inclus, fnt odr, scat flor(from abv zone), no stn, NS

Dol Gry/Drk Gry, Fxln, fair Inxln/Vug por w/gluc inclus, Dol/Ls Gry-Crm, Fxln, poor-fair PP Inxln sucro Por, chlky, Sh Gry-Grn-Blk Carb, fiss silty, Chrt Ls, no odr, no flor, no stn, NS (2 pc from test zone)

Dol/Ls, Gry-Drk Gry-Crm-Tan, Fxln micrite, fair PP Inxln/foss por w/foss & gluc inclus, few w/ pyr inclus, chlky, Chrt Wht-Tan, trans-op shp weathered, Sh Gry-Char, fiss silty no odr, no flor, no stn, NS

Dol/Ls, Gry-Drk Gry-Crm, Fxln, poor-fair PP Inxln/foss por, w/foss(spng spc, bryz) gluc inclus, few w/ pyr inclus, chlky, Chrt, Wht-Tan, trans-op shp weathered, Sh Gry-Char, fiss silty no odr, no flor, no stn, NS (2 pc from test zone)

Dol/Ls Gry-Lt Gry, Fxln, fair Inxln/Vug Por w/gluc & pyr inclus, Dol Lt Gry, Fxln, fair PP sucro por, Chrt Wht-Pnk, trans-op Shp rnd vit, Sh Gry-Chr-Grn-Mrn, fiss soft pyr/chrt inclus, Mass Pyr, no odr, no stn, no flor, NS (poss cave ins w/brn spv stn, sli flor)

Dol/Ls Gry-Drk Gry-Lt Gry-Crm, Fxln, fair PP Inxln sucro por w/gluc and foss inclus(spng spc), Dol Drk Gry-Gry, Fxln, poor PP Inxln por w/gluc inclus(abd), Sh Gry-Char-Aqua, fiss, fnt odr, scat flor, no stn, NS

30" CFS @ 5225' Dol Gry-Lt Gry, Fxln, poor-fair PP Inxln Por, Dol/Ls Gry-Wht, fxln, fair Inxln por w/ gluc inclus, wht foss inclus(spg spc), chlky, Chrt Wht-Tan-Org, trans-op shp rnd erthy vit, Sh Gry-Grn-Pur-Red-Yel, fiss fri silty, no odr, no flor, no stn, NS

60" CFS @ 5225' Dol Gry-Lt Gry, Fxln, poor-fair PP Inxln Por, Dol/Ls Gry-Lt Gry-Wht, Fxln, fair Inxln/foss Por w/foss(spg spg) & gluc inclus, Sh Gry-Grn-Red fiss fri sli silty, no odr, no flor, no stn, NS

RTD = 5225'
LTD = 5225'

Electric Logs Run By Weatherford Logging: Dual Induction, Compensated Density-Neutron & Microresistivity Logs.

Geologist Left Location @ 3:50 PM on 10/18/2014

