



DRILL STEM TEST REPORT

Prepared For: **McCoy Petroleum Corp.**

9342 E. Central
Wichita KS .67206

ATTN: Zach Wiele

Sealey A #1-15

15-30s-19w Kiowa KS

Start Date: 2014.10.17 @ 10:37:08

End Date: 2014.10.17 @ 20:39:23

Job Ticket #: 57861 DST #: 1

Trilobite Testing, Inc
1515 Commerce Parkway Hays, KS 67601
ph: 785-625-4778 fax: 785-625-5620

Printed: 2014.10.21 @ 08:45:58



TRILOBITE TESTING, INC

DRILL STEM TEST REPORT

McCoy Petroleum Corp.

15-30s-19w Kiowa KS

9342 E. Central
Wichita KS .67206

Sealey A #1-15

Job Ticket: 57861

DST#: 1

ATTN: Zach Wiele

Test Start: 2014.10.17 @ 10:37:08

GENERAL INFORMATION:

Formation: **Miss.**

Deviated: No Whipstock: ft (KB)

Time Tool Opened: 12:57:53

Time Test Ended: 20:39:23

Test Type: Conventional Bottom Hole (Initial)

Tester: Gary Pevoteaux

Unit No: 56

Interval: 5081.00 ft (KB) To 5132.00 ft (KB) (TVD)

Reference Elevations: 2273.00 ft (KB)

Total Depth: 5132.00 ft (KB) (TVD)

2264.00 ft (CF)

Hole Diameter: 7.88 inches Hole Condition: Fair

KB to GR/CF: 9.00 ft

Serial #: 8352 Outside

Press@RunDepth: 154.44 psig @ 5082.00 ft (KB)

Capacity: 8000.00 psig

Start Date: 2014.10.17 End Date: 2014.10.17

Last Calib.: 2014.10.17

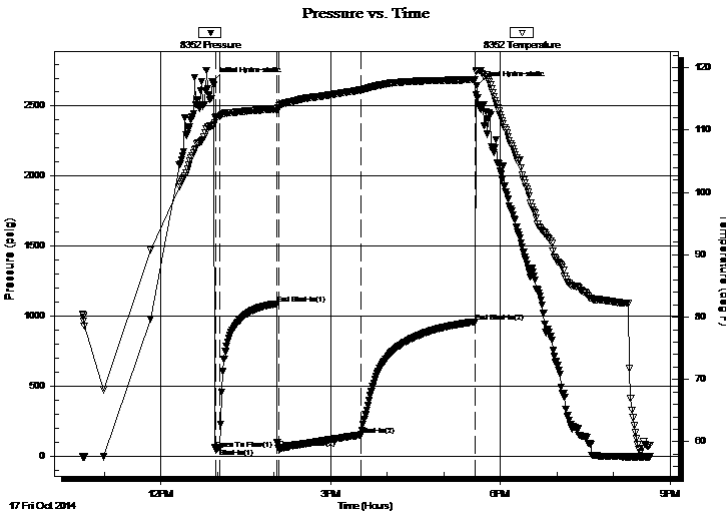
Start Time: 10:37:13 End Time: 20:39:23

Time On Btm: 2014.10.17 @ 12:54:38

Time Off Btm: 2014.10.17 @ 17:34:53

TEST COMMENT: IF: Strong blow . B.O.B. in 3 - 5 secs.
IS: No blow .
FF: Strong blow . GTS in 3 1/2 mins. (see gas flow report)
FS: Weak to fair blow . Increase to 5".

PRESSURE SUMMARY



Time (Min.)	Pressure (psig)	Temp (deg F)	Annotation
0	2676.25	110.74	Initial Hydro-static
4	54.76	111.92	Open To Flow (1)
8	61.95	112.22	Shut-In(1)
69	1090.37	113.42	End Shut-In(1)
70	60.98	113.53	Open To Flow (2)
158	154.44	116.43	Shut-In(2)
279	962.02	118.10	End Shut-In(2)
281	2648.77	119.52	Final Hydro-static

Recovery

Length (ft)	Description	Volume (bbl)
125.00	GMCO 46%g 12%m 42%o	0.61
190.00	GMCO 30%g 34%m 36%o	1.83

Gas Rates

	Choke (inches)	Pressure (psig)	Gas Rate (Mcf/d)
First Gas Rate	0.25	3.00	27.60
Last Gas Rate	0.25	1.00	24.43
Max. Gas Rate	0.25	3.50	28.40



**TRILOBITE
TESTING, INC.**

DRILL STEM TEST REPORT

TOOL DIAGRAM

McCoy Petroleum Corp.

15-30s-19w Kiowa KS

9342 E. Central
Wichita KS .67206

Sealey A #1-15

Job Ticket: 57861

DST#: 1

ATTN: Zach Wiele

Test Start: 2014.10.17 @ 10:37:08

Tool Information

Drill Pipe:	Length: 4869.00 ft	Diameter: 3.80 inches	Volume: 68.30 bbl	Tool Weight: 2400.00 lb
Heavy Wt. Pipe:	Length: 0.00 ft	Diameter: 0.00 inches	Volume: 0.00 bbl	Weight set on Packer: 24000.00 lb
Drill Collar:	Length: 217.00 ft	Diameter: 2.25 inches	Volume: 1.07 bbl	Weight to Pull Loose: 95000.00 lb
			<u>Total Volume: 69.37 bbl</u>	Tool Chased 0.00 ft
Drill Pipe Above KB:	33.00 ft			String Weight: Initial 78000.00 lb
Depth to Top Packer:	5081.00 ft			Final 82000.00 lb
Depth to Bottom Packer:	ft			
Interval between Packers:	51.00 ft			
Tool Length:	79.00 ft			
Number of Packers:	2	Diameter: 6.75 inches		

Tool Comments:

Tool Description

Tool Description	Length (ft)	Serial No.	Position	Depth (ft)	Accum. Lengths
Change Over Sub	1.00			5054.00	
Shut In Tool	5.00			5059.00	
Hydraulic tool	5.00			5064.00	
Jars	5.00			5069.00	
Safety Joint	3.00			5072.00	
Packer	4.00			5076.00	28.00 Bottom Of Top Packer
Packer	5.00			5081.00	
Stubb	1.00			5082.00	
Recorder	0.00	8352	Outside	5082.00	
Recorder	0.00	8370	Inside	5082.00	
Perforations	5.00			5087.00	
Blank Spacing	32.00			5119.00	
Perforations	8.00			5127.00	
Bullnose	5.00			5132.00	51.00 Bottom Packers & Anchor

Total Tool Length: 79.00



**TRILOBITE
TESTING, INC**

DRILL STEM TEST REPORT

FLUID SUMMARY

McCoy Petroleum Corp.

15-30s-19w Kiowa KS

9342 E. Central
Wichita KS .67206

Sealey A #1-15

Job Ticket: 57861

DST#: 1

ATTN: Zach Wiele

Test Start: 2014.10.17 @ 10:37:08

Mud and Cushion Information

Mud Type: Gel Chem

Cushion Type:

Oil API:

deg API

Mud Weight: 10.00 lb/gal

Cushion Length:

ft

Water Salinity:

9000 ppm

Viscosity: 68.00 sec/qt

Cushion Volume:

bbbl

Water Loss: 10.79 in³

Gas Cushion Type:

Resistivity: 0.00 ohm.m

Gas Cushion Pressure:

psig

Salinity: 9000.00 ppm

Filter Cake: 0.20 inches

Recovery Information

Recovery Table

Length ft	Description	Volume bbl
125.00	GMCO 46%g 12%m 42%o	0.615
190.00	GMCO 30%g 34%m 36%o	1.827

Total Length: 315.00 ft

Total Volume: 2.442 bbl

Num Fluid Samples: 0

Num Gas Bombs: 1

Serial #: gp-1

Laboratory Name: Caraway

Laboratory Location: Liberal, KS

Recovery Comments:



**TRILOBITE
TESTING, INC.**

DRILL STEM TEST REPORT

GAS RATES

McCoy Petroleum Corp.

15-30s-19w Kiowa KS

9342 E. Central
Wichita KS .67206

Sealey A #1-15

Job Ticket: 57861

DST#: 1

ATTN: Zach Wiele

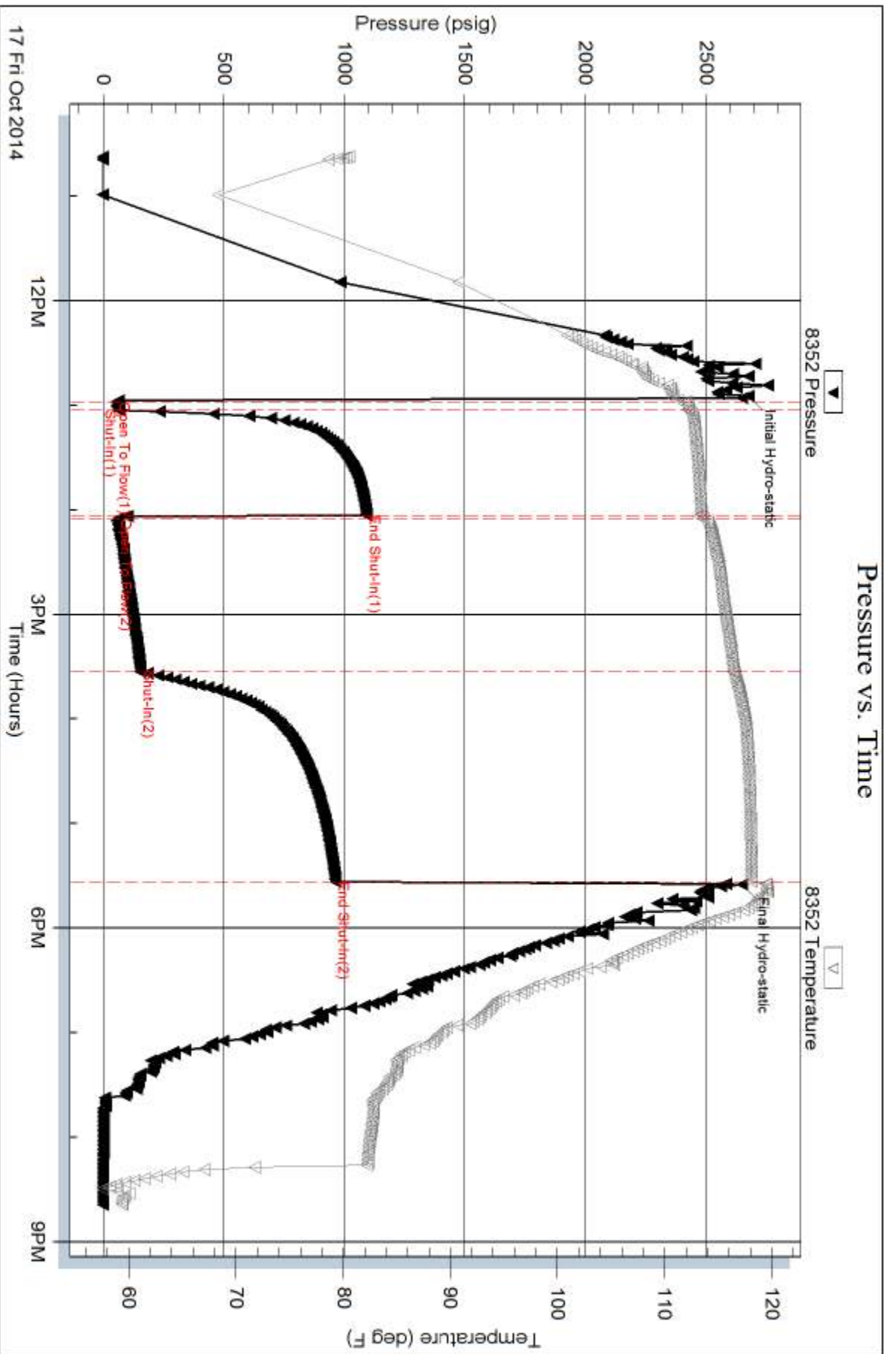
Test Start: 2014.10.17 @ 10:37:08

Gas Rates Information

Temperature: 59 (deg F)
Relative Density: 0.65
Z Factor: 0.8

Gas Rates Table

Flow Period	Elapsed Time	Choke (inches)	Pressure (psig)	Gas Rate (Mcf/d)
2	10	0.25	3.00	27.60
2	20	0.25	3.00	27.60
2	30	0.25	3.50	28.40
2	40	0.25	3.50	28.40
2	50	0.25	3.00	27.60
2	60	0.25	2.00	26.02
2	70	0.25	2.00	26.02
2	80	0.25	2.00	26.02
2	90	0.25	1.00	24.43



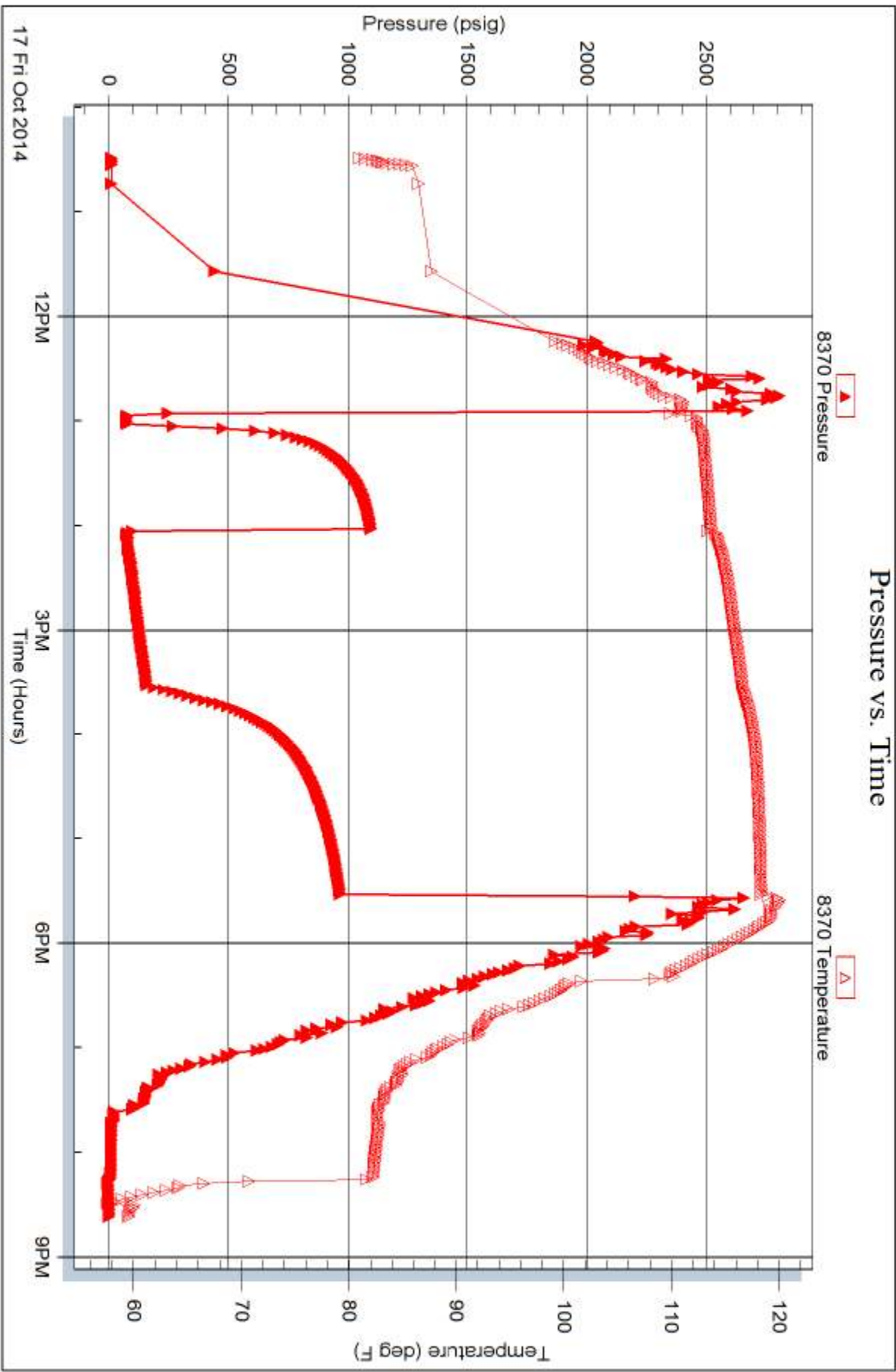
Serial #: 8370

Inside

McCoy Petroleum Corp.

Sealey A #1-15

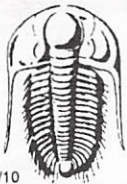
DST Test Number: 1



Trilobite Testing, Inc

Ref. No: 57861

Printed: 2014, 10, 21 @ 08:46:00



TRILOBITE TESTING INC.

1515 Commerce Parkway • Hays, Kansas 67601

Test Ticket

NO. 57861

Well Name & No. SEALEY A #1-15 Test No. 1 Date 10-17-14
 Company McCoy PETL. CORP. Elevation 2273 KB 2264 GL
 Address 9342 E. CENTRAL, WICHITA KS 67206
 Co. Rep / Geo. ZACH WIELE Rig STERLING DRILL #4
 Location: Sec. 15 Twp. 30S Rge. 19W Co. KIOWA State KS

Interval Tested 5081 - 5132' Zone Tested MISS.
 Anchor Length 51' Drill Pipe Run 4869' Mud Wt. 9.5
 Top Packer Depth 5076' Drill Collars Run 217' Vis 68
 Bottom Packer Depth 5081' Wt. Pipe Run 0 WL 10.8cc
 Total Depth 5132' Chlorides 9,000 ppm System LCM 3#
 Blow Description IF: Strong blow B.O.B. in 3-5 sec. ISI, No blow.

FF: Strong blow. CTS in 3 1/2 mins. (see gas flow report)
ESI: Weak to fair blow. Increase to 5".

Rec	Feet of	%gas	%oil	%water	%mud
<u>190</u>	<u>GMCO</u>	<u>30%</u>	<u>36%</u>	<u>34%</u>	<u></u>
<u>125</u>	<u>GMCO</u>	<u>46%</u>	<u>42%</u>	<u>12%</u>	<u></u>
<u>315</u>					

Rec Total 315' FLU10BHT 110° Gravity N/A API RW N.C. @ ° F Chlorides 9,000 ppm

(A) Initial Hydrostatic <u>2676</u>	<input checked="" type="checkbox"/> Test <u>1350</u>	T-On Location <u>0930</u>
(B) First Initial Flow <u>55</u>	<input checked="" type="checkbox"/> Jars <u>250</u>	T-Started <u>1037</u>
(C) First Final Flow <u>62</u>	<input checked="" type="checkbox"/> Safety Joint <u>75</u>	T-Open <u>1257</u>
(D) Initial Shut-In <u>1090</u>	<input type="checkbox"/> Circ Sub	T-Pulled <u>1736</u>
(E) Second Initial Flow <u>61</u>	<input type="checkbox"/> Hourly Standby	T-Out <u>2039</u>
(F) Second Final Flow <u>154</u>	<input checked="" type="checkbox"/> Mileage <u>110</u> x 2 <u>170.50</u>	Comments
(G) Final Shut-In <u>962</u>	<input type="checkbox"/> Sampler <u>170.50</u>	
(H) Final Hydrostatic <u>2049</u>	<input type="checkbox"/> Straddle	<input type="checkbox"/> Ruined Shale Packer
	<input type="checkbox"/> Shale Packer	<input type="checkbox"/> Ruined Packer
	<input type="checkbox"/> Extra Packer	<input type="checkbox"/> Extra Copies
	<input type="checkbox"/> Extra Recorder	Sub Total <u>0</u>
	<input type="checkbox"/> Day Standby	Total <u>2016.00</u>
	<input type="checkbox"/> Accessibility	MP/DST Disc't

Initial Open 5
 Initial Shut-In 60
 Final Flow 90
 Final Shut-In 120

Sub Total 2016

Approved By [Signature] Our Representative [Signature]

Trilobite Testing Inc. shall not be liable for damaged of any kind of the property or personnel of the one for whom a test is made, or for any loss suffered or sustained, directly or indirectly, through the use of its equipment, or its statements or opinion concerning the results of any test, tools lost or damaged in the hole shall be paid for at cost by the party for whom the test is made.

