



Office (620) 588-4250 212 Main St. • P.O. Box 215 • Clarin, KS 67525 Home (620) 587-3444
 James C. Musgrove
 Petroleum Geologist

GEOLOGIST'S REPORT

DRILLING TIME AND SAMPLE LOG

COMPANY LD Drilling Inc.

ELEVATIONS

LEASE Korick Unit #1-22

KB 1925

FIELD MAUD West

DF _____

LOCATION NE-NE-W-7NW (184' FNL 5, 1142' FWL)

GL 1920

SEC 22 TWP 18 S RGE H W

Measurements Are All From KB

COUNTY Barren STATE Kansas

CONTRACTOR Petromark Drilling Co. (right 2)

SPUD 10/16/2014 COMP 10/22/2014

SURFACE CASING 8 5/8" @ 920'
 PRODUCTION 5 1/2" @ 3229'

RTD 3550 LTD 3531

ELECTRICAL SURVEYS
 By Nabors. Dual induction,
 compensated density/normal,
 Micro & Sonic

MUD UP 2800 TYPE MUD Chemical displaced

SAMPLES SAVED FROM 2800

DRILLING TIME KEPT FROM 2800

SAMPLES EXAMINED FROM 2800

GEOLOGICAL SUPERVISION FROM 2900

GEOLOGIST ON WELL Jim Musgrove

FORMATION TOPS

LOG

SAMPLES

FORMATION TOPS	LOG	SAMPLES
Anhydrite	867 +1056	RTD 3530 - 1605
Base anhydrite	899 +1026	LTD 3531 - 1606
Topeka	2869 - 94	
Helderberg	3107 - 1182	
Toronto	3115 - 1190	
Douglas	3128 - 1203	
Shinarump	3180 - 1265	
Hansburg	3190 - 1265	
Base Kansas City	3390 - 1465	
Goodlimestone	3408 - 1483	
Arbuckle	3429 - 1504	

REMARKS

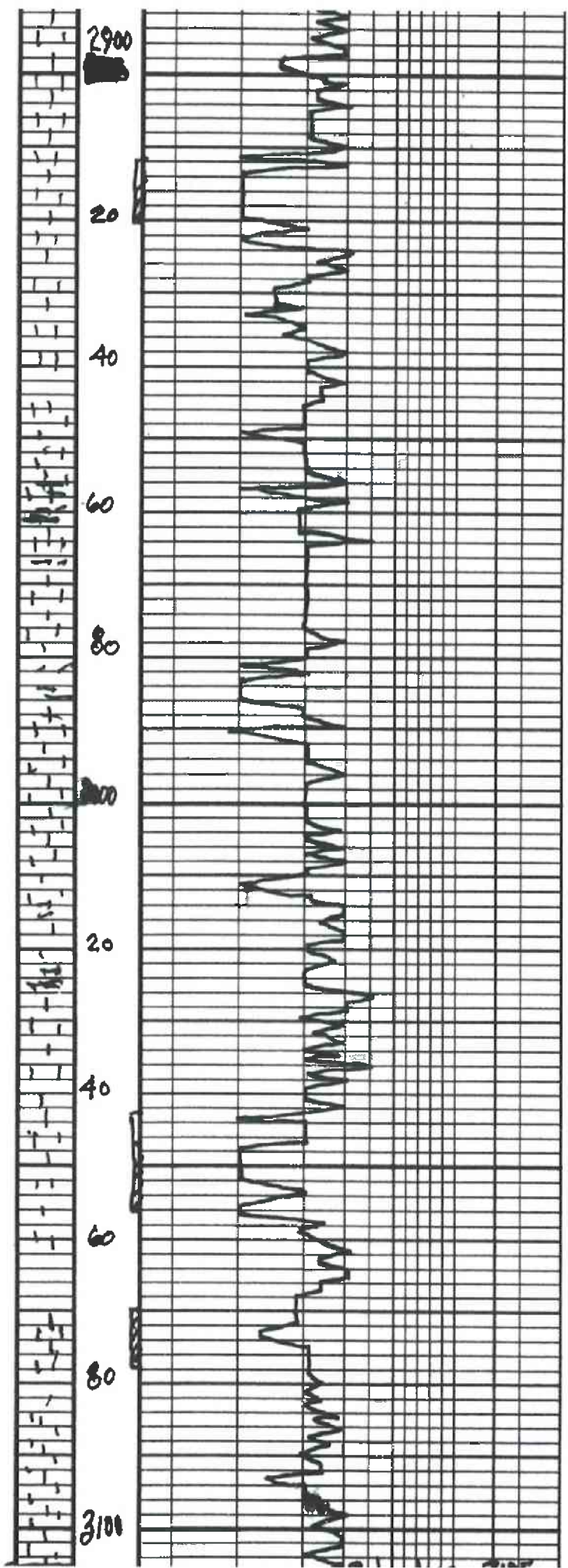
5 1/2" production casing was set & cemented on the Korick Unit #1-22!

Respectfully Submitted,
 James C. Musgrove
 Petroleum Geologist

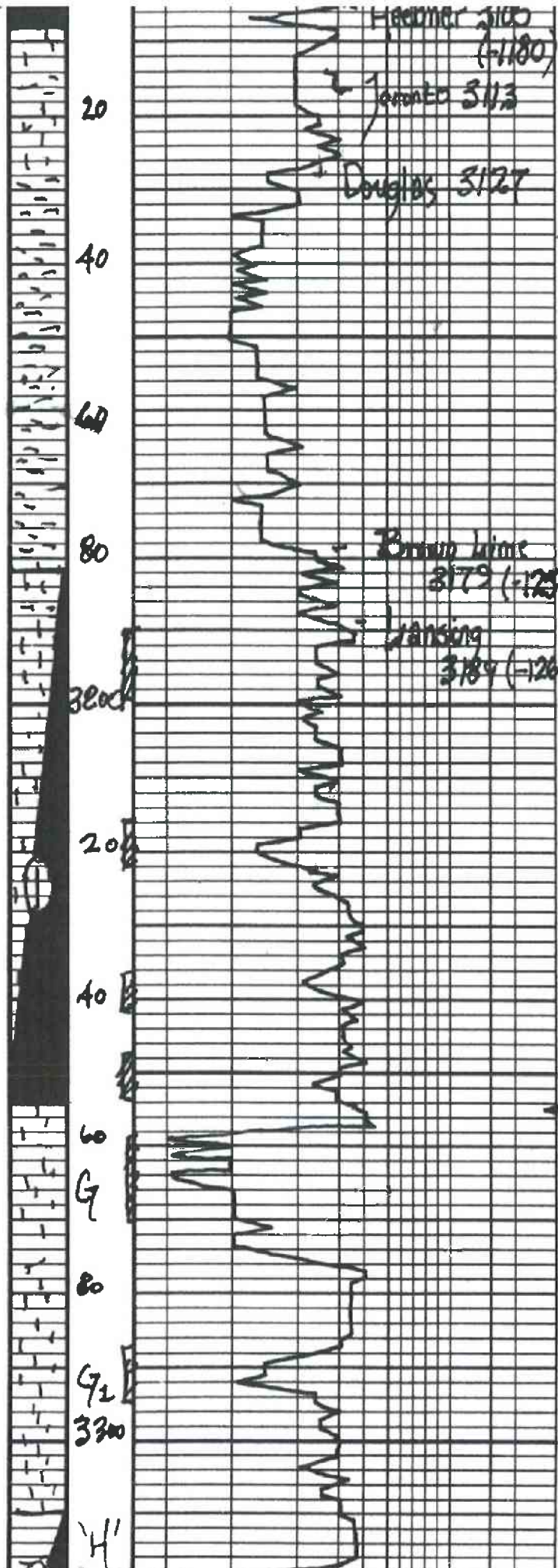


LEGEND

Anhydrite	Salt	Sandstone	Shale	Carbonaceous	Limestone	Oolitic Limestone	Chert	Dolomite



2900
 blk/green sh
 20
 ls/gay/blk foss, cherty
 few sub med
 } 2 + gray A
 40
 ls tan, wh; foss cherty
 Sparty calcite cement
 blk/gay sh
 60
 ls; wh/gay - only few
 foss; cherty, shaly in
 part
 80
 gray/gayish green sh
 }
 100
 ls; tan/gay; cherty
 20
 ls; tan, fr; few med
 x.l; few g mts
 blk carb. sh.
 40
 ls; gray, wh; fr; few foss,
 fr. wh d; fr. fe de
 60
 ls; tan, med; good cement,
 ?? golden brown edge
 sh, rife, no odor
 } 2
 80
 ls; gray/blk; fr; few foss
 cherty mts
 } 2
 blk; fr gray A
 3100



blk carb. sh.

ls. tan/gry, frk, foss, chunky
ex. light brown sh, no ad.
- no odor / f. am

gry/blk - rusty brown
silty sh.

??
ditto as

??

ls. tan/brown, frk, few
foss, blk.

ls. tan/gry, frk, few foss,
slightly blk, to brown
blk brown sh, no ad., no odor.

ls. tan, blk, nm, chunky,
blk sh, no ad., no odor.

tan chik

ls. gry, blk, foss, chunky

ls. gry, blk, chunky, blk/gry
sh, no ad., no odor.

ls. tan, blk, foss, poor
vis; to brown sh, no ad.
no odor (chunky - 1/2)

ls. gry, blk, nm, fr. nm
blk sh, to blk, ??, odor
(black)

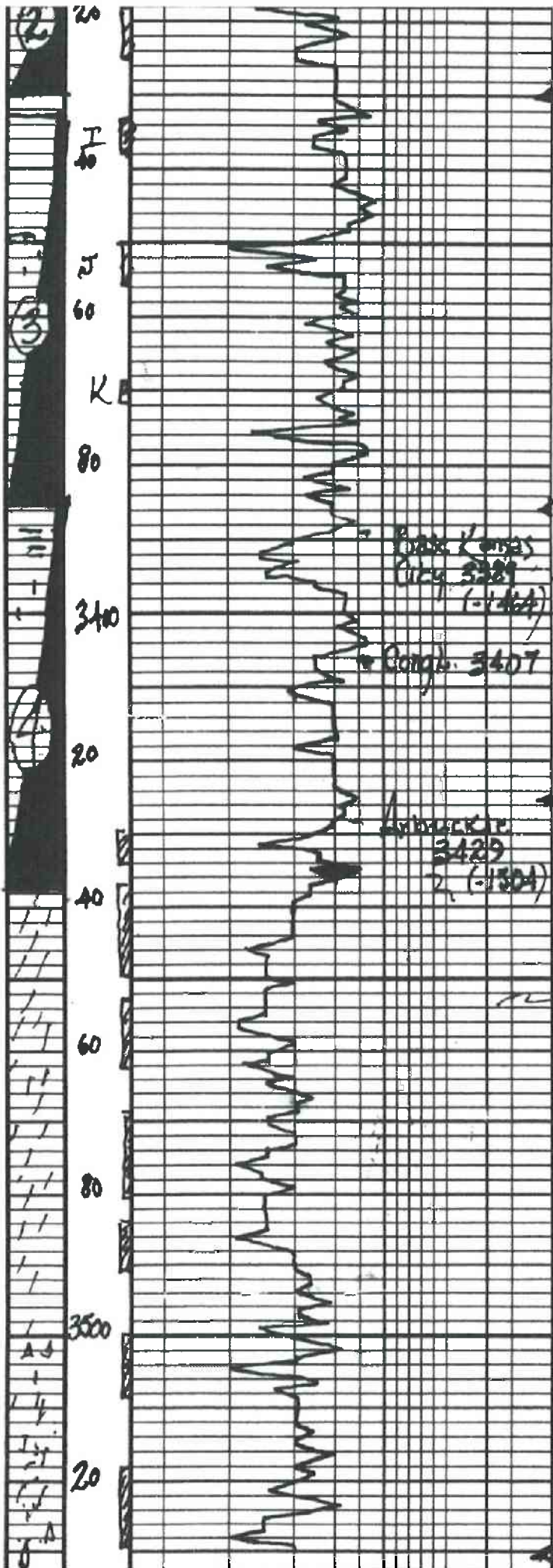
??

ls. wh/ tan silty sh, foss
in part, poor fr. g, 1/2
blk sh, no ad., no odor
fr. wh/gry A

ls. tan, gry, frk, chunky - 1/2
blk

Dst #1
3181-3254
30-30-30-30
Blow, weak
Rec; 15' mud
PRESSURES; Isip 722
fs; 228
I/O 14-18
CF 17-20
104
1526
-1496

3310-3330
Dst #2
30-30-45-60
Blow, strong, fr. ts.
10 min, fouled
60,000 c/g pd
2nd



- ls; tan; gray (foss/ool)
 Sour sub-sol. gas
 50-60/100 (golden brown - brown)
 50/50 odor

100/100 (gray, ool in part,
 brown/blk. 200, 70/50, 70/100) odor

ls; wh/cream, ool, cherty
 50/50. Early days in
 blk. 50/50. 70/50. no odor

} 2

- ls; gray/tan (x2); foss
 sandy calcite infill in some
 golden brown/gray - blk. 50/50
 70/50; no odor.

- ls; wh/blk (x2); few sandy
 green/rusty brown sh.

- orange/wh; brassy
 50/50 (redish) 70/50
 70/50 (sandy) 70/50

} 2

- dol; wh/cream med x2; sandy
 calcite 50/50

- dol; wh/cream med x2; sandy
 brown/blk. 50/50; good odor

- dol; wh/cream med x2; sandy
 50/50. 70/50. 70/50. 70/50
 (fairy blue) 70/50 odor

- dol; cream; med/coarse x2;
 fr/good x2. 9; blk. 50/50
 50/50. 70/50 (blk/dead)
 no odor

} 2

- dol; sandy. Sandy
 to fine 9 70/50

} 2

- dol; wh/cream (x2); sandy
 50/50. 70/50

} 2

- dol; wh/cream

opening, 4.00
 Rec; 2200 Gassy
 oil
 pressures:
 25 p 701 ps
 53 p 709
 100 180-415
 150 149
 151
 1597
 -1905 ps

DST#3 9398-3386
 30-30-45-60
 Blow, strong (Bob 11 min)
 2nd opening, strong
 (Bob 11 min)

Rec; 120' gas in pipe
 200' slightly muddy
 oil
 (10% mud) 200' gas;
 70% mud)

pressures; 25 p 601 ps
 53 p 574
 100 18 63
 150 57-66
 151
 1609
 -1582 ps

DST#4 5385-3137
 30-45-60-60
 Blow Fair (3')
 2nd opening; weak (2")

Rec; 140' mud out
 gassy oil
 (25% mud, 15% gas,
 60% oil)

pressures
 25 p 572 ps
 53 p 519
 100 21-58
 150 67-76
 151 1131
 -1611 ps



to



R.T.D 3530

