



Fall & Associates

Stake and Elevation Service

719 W. 5th Street

P.O. Box 404

Cenecordia, KS. 66901

1-800-536-2821

Date 5-15-14

Invoice Number 0513142

MURFIN DRILLING

2-7

Pancirni

Operator

Number

Farm Name

Rawlins-KS

7

2s

36w

990'FSL 2310'FEL

County-State

S

T

R

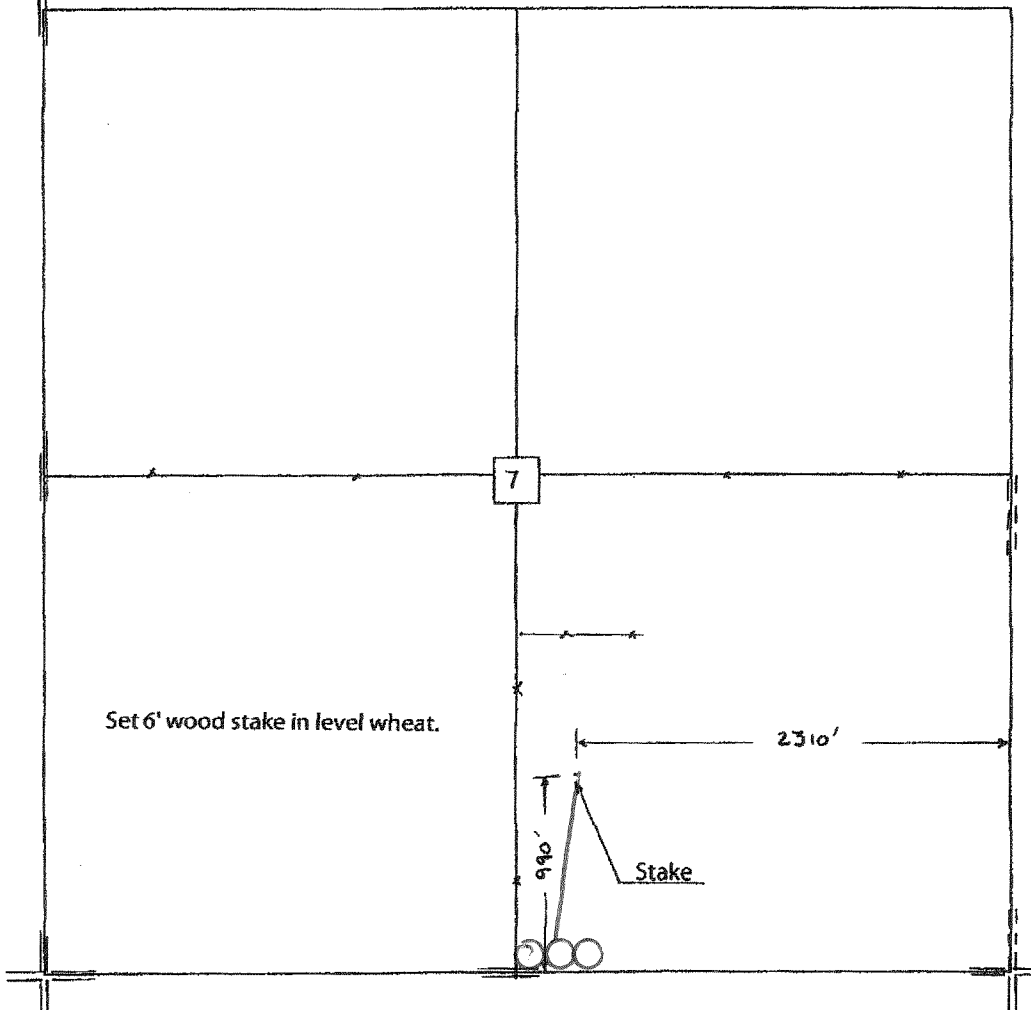
Location

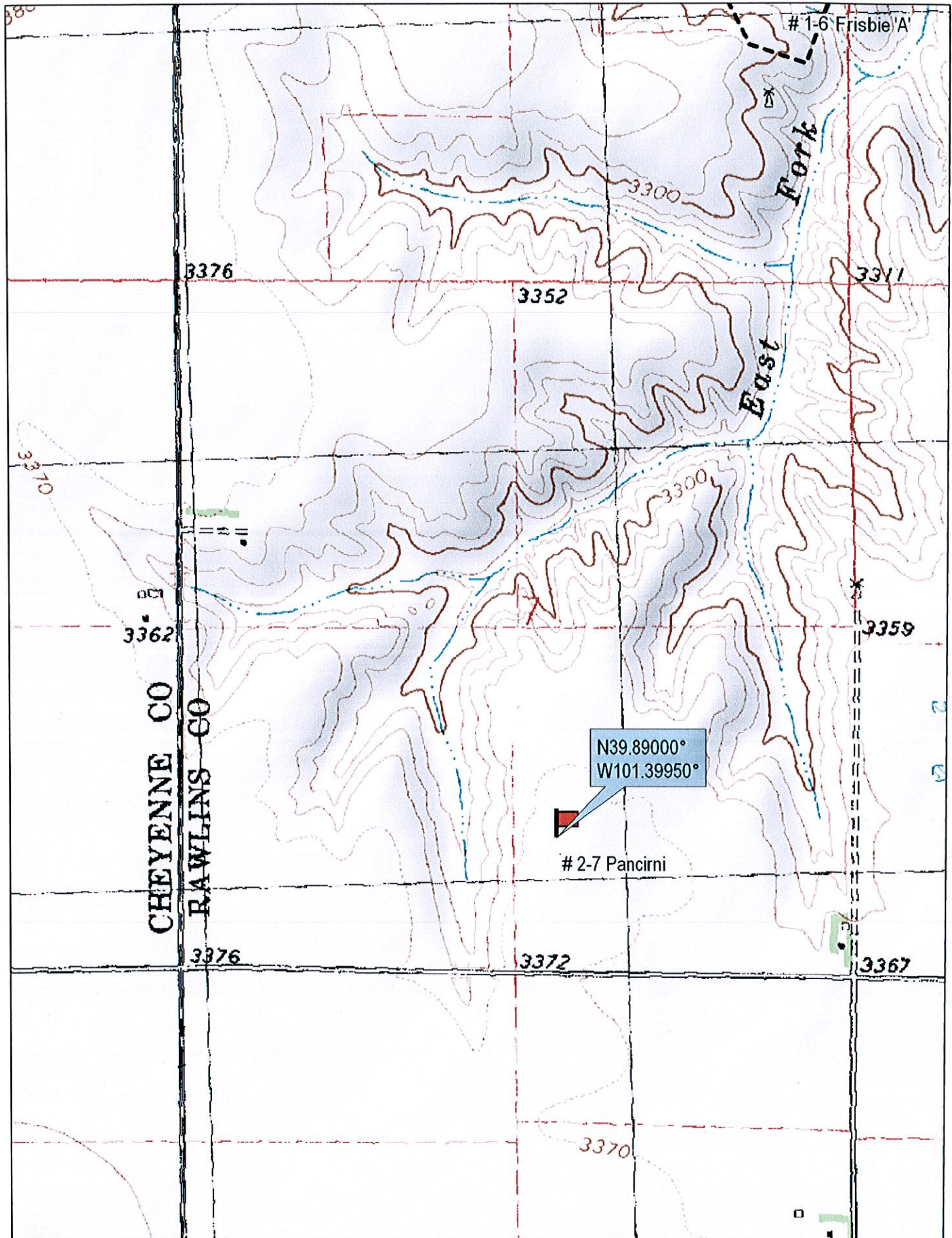
Murfin Drilling
250 N. Water
Suite 300
Wichita, KS. 67202

Elevation 3372 Gr.

Ordered By: Shauna

Scale 1"=1000'





© 2002 DeLorme. 3-D TopoQuads®. Data copyright of content owner.
www.delorme.com

