

**KIM B. SHOEMAKER**  
 CONSULTING GEOLOGIST  
 316-684-9709 \* WICHITA, KS

**GEOLOGIST'S REPORT**  
 DRILLING TIME AND SAMPLE LOG

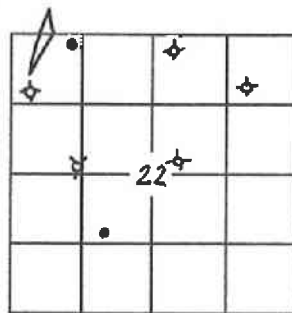
COMPANY L. D. DRILLING, INC.  
 LEASE \* 2-22 KORIEL UNIT  
 FIELD LAUD WEST  
 LOCATION 1220' FNL ± 330' FWL  
 SEC 22 TWP 18s RGE 14w  
 COUNTY BARTON STATE KANSAS  
 CONTRACTOR PETROMARK R16 2  
 SPUD 10-25-14 COMP 10-31-14  
 RTD 3457 LTD \_\_\_\_\_  
 MUD UP 2660 TYPE MUD CHEMICAL

ELEVATIONS  
 KB 1925  
 DF \_\_\_\_\_  
 GL 1920  
 Measurements Are All From 1925 KB

CASING  
 SURFACE 8 5/8" @ 921'  
 PRODUCTION \_\_\_\_\_  
 ELECTRICAL SURVEYS  
 None

SAMPLES SAVED FROM 2800 TO 3457  
 DRILLING TIME KEPT FROM 2700 TO 3457  
 SAMPLES EXAMINED FROM 2800 TO 3457  
 GEOLOGICAL SUPERVISION FROM 3100 TO 3457  
 GEOLOGIST ON WELL KIM B. SHOEMAKER

FORMATION TOPS	LOG	SAMPLES
ANHYDRITE		870 + 1055
B/ANH.		888 + 1037
TOPEKA		2877 - 952
HEEBNER		3115 - 1190
BROWN LIME		3188 - 1263
LANSING		3198 - 1273
B/KC		3402 - 1477
ARBUCKLE		3449 - 1524

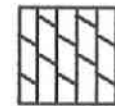
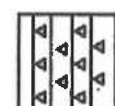



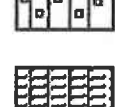


REMARKS

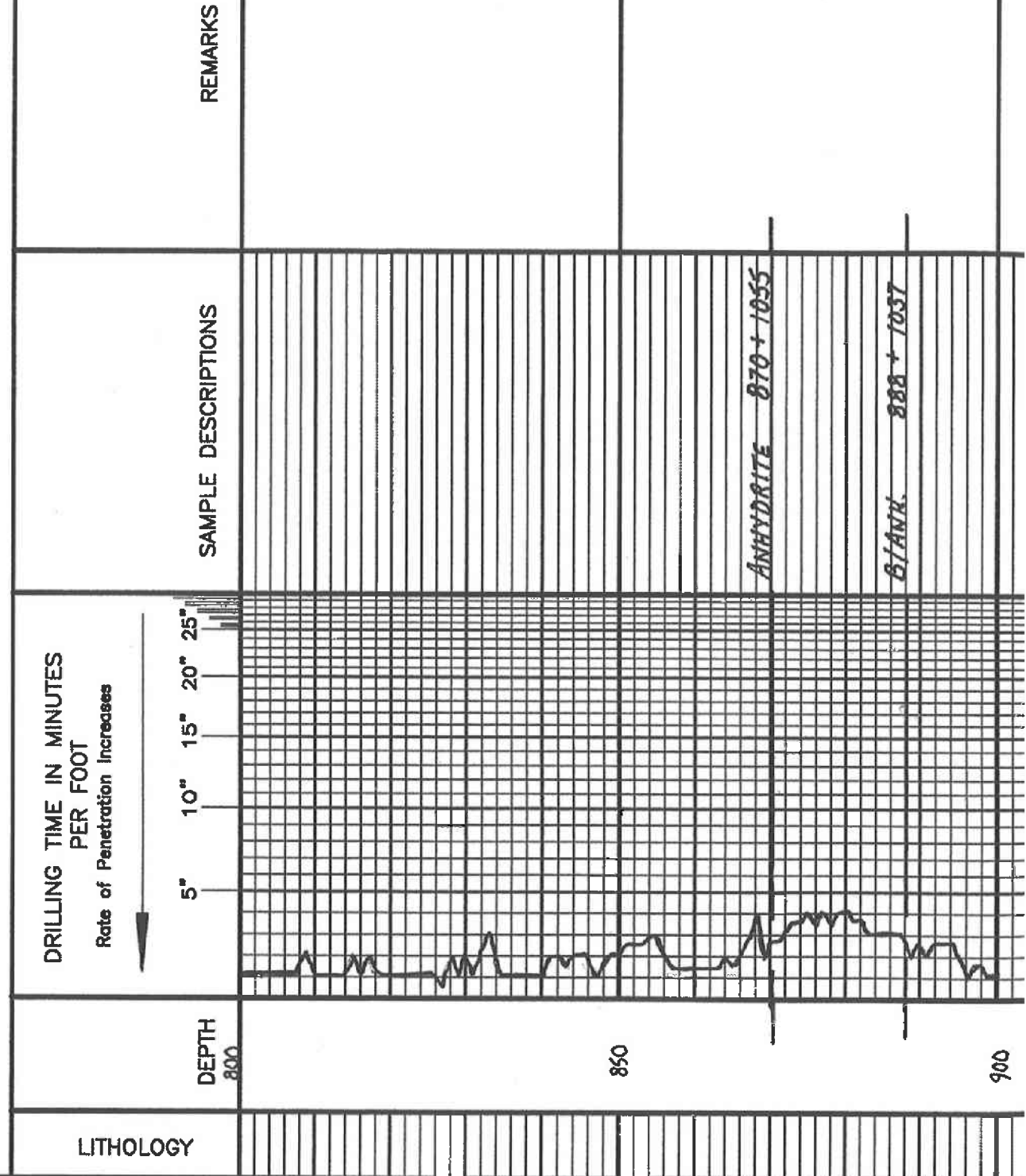
10-25-14 SPUD  
 10-26 @ 872'  
 10-27 @ 1345'  
 10-28 @ 2400'  
 10-29 @ 2953'  
 10-30 @ 3397'  
 10-31 @ 3457'

API: 15-009-26039

LEGEND

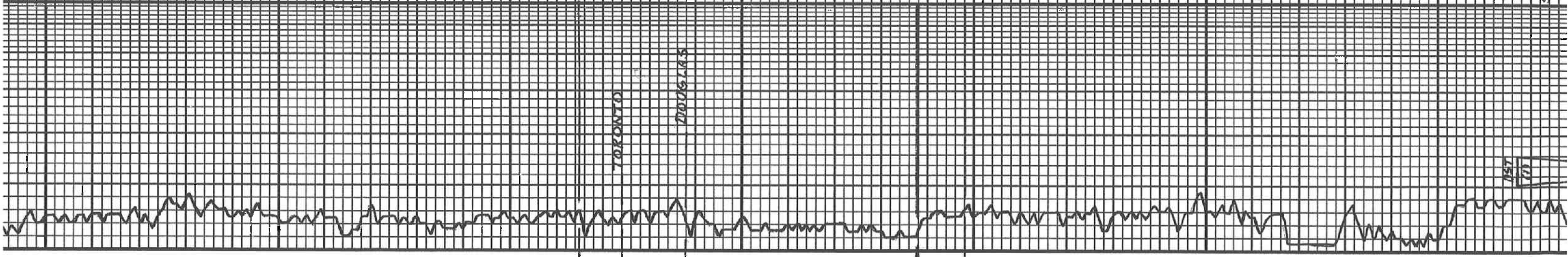
-  Dolomite
-  Chert
-  Col. Lime
-  Limestone
-  Carb sh
-  Shale
-  Sandstone
-  Salt
-  Anhydrite

SHOED1-06



Vis: 52 WT: 8.8  
Wt: 6.8 CML: 8100

Sh. Gy.  
 ls. To Sil. Chlgy.  
 Sh. L. L. L. L.  
 ls. Gy. VSI Foss.  
 Sh. Alk.  
 ls. Top. VSI Foss. Sil. A  
 ls. w/ Chlgy. mol. Sil. Chlgy.  
 ls. To mol. Sil. Foss. Sil. A  
 ls. Sil. Chlgy.  
 HESNER 3115-1190  
 Sh. L. L. L. L.  
 ls. mol. Sil. Foss. Sil. A  
 Sh. Blue Gy.  
 Sh. w/ Blue Gy.  
 Sh. Gy.  
 BROWN LIME 3188-1263  
 ls. Sil. VSI Foss.  
 LANSING 3198-1273  
 ls. mol. VSI Foss. VSI A  
 ls. To mol. Sil. A  
 Sh. Sil. Chlgy.  
 ls. mol. VSI Foss. Sil. Calentit  
 ls. Gy. Foss. VSI Chlgy.  
 Sh. L. L. L. L.  
 ls. To Sil. Foss. Sil. VSI Foss. Sil. A  
 Sec. To Sil. To Sil. VSI Foss. Sil. A  
 Sh. Gy.  
 ls. To mol. Sil. A  
 ls. mol. Chlgy.  
 ls. Chlgy. Dol.  
 Sh. Gy. Sil. A



DST (1) 3317-3397

15' OPEN: Blow built to 14"

2' OPEN: No Blow

30.30.30-30

Rec. 2' Mud

FP: 5957 5858

SIP: 105.122



