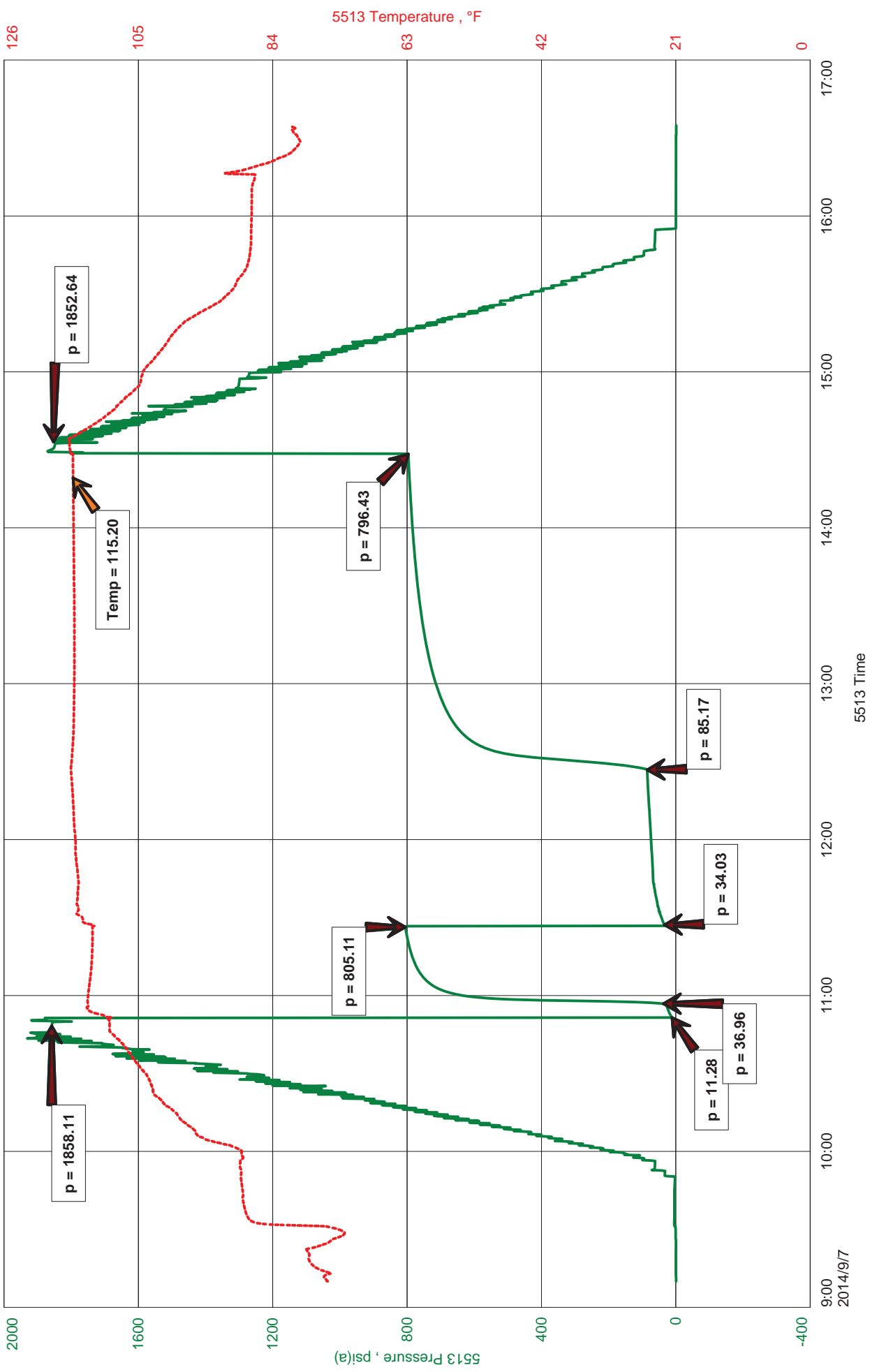


Mull Drilling Company, Inc
DST #2 Lans. E-F 3805-3865
Start Test Date: 2014/09/07
Final Test Date: 2014/09/07

RLL #1-25
Formation: Lansing E-F
Pool: Wildcat
Job Number: K166

RLL #1-25





JASON MCLEMORE

CELL # 620-617-0527

General Information

Company Name	Mull Drilling Company, Inc	Job Number	K166
Contact	Toby Eck	Representative	Jason Mclemore
Well Name	RLL #1-25	Well Operator	Mull Drilling Company, Inc
Unique Well ID	DST #2 Lans. E-F 3805-3865	Prepared By	Jason McLemore
Surface Location	25-7s-26w-Sheridan	Qualified By	Kevin Kessler
Field	Wildcat	Test Unit	6
Well Type	Vertical		

Test Information

Test Type	Drill Stem Test	Representative	Jason Mclemore
Formation	Lansing E-F	Well Operator	Mull Drilling Company, Inc
Well Fluid Type	01 Oil	Report Date	2014/09/07
Test Purpose (AEUB)	Initial Test	Prepared By	Jason McLemore
Start Test Date	2014/09/07	Start Test Time	09:10:00
Final Test Date	2014/09/07	Final Test Time	16:47:00

Test Results

RECOVERED:

15	Free Oil
150	OCM, 10% Oil, 90% Mud
165	TOTAL FLUID

60' Gas In pipe

GRAVITY: 39



DIAMOND TESTING
P.O. Box 157
HOISINGTON, KANSAS 67544
(800) 542-7313
DRILL-STEM TEST TICKET
FILE: rl1dst2

TIME ON: 9:10 AM
TIME OFF: 4:47 PM

Company Mull Drilling Company, Inc. Lease & Well No. RLL #1-25
Contractor WW #4 Charge to Mull Drilling Company, Inc.
Elevation KB 2531 Formation Lansing E-F Effective Pay _____ Ft. Ticket No. K166
Date 9-7-14 Sec. 25 Twp. 7 S Range 26 W County Sheridan State KANSAS
Test Approved By Kevin Kessler Diamond Representative Jason McLemore

Formation Test No. 2 Interval Tested from 3805 ft. to 3865 ft. Total Depth 3865 ft.
Packer Depth 3800 ft. Size 6 3/4 in. Packer depth _____ ft. Size 6 3/4 in.
Packer Depth 3805 ft. Size 6 3/4 in. Packer depth _____ ft. Size 6 3/4 in.

Depth of Selective Zone Set _____

Top Recorder Depth (Inside) 3786 ft. Recorder Number 5513 Cap. 5000 P.S.I.
Bottom Recorder Depth (Outside) 3787 ft. Recorder Number 5588 Cap. 6000 P.S.I.
Below Straddle Recorder Depth _____ ft. Recorder Number _____ Cap. _____ P.S.I.

Mud Type Chemical Viscosity 60 Drill Collar Length 123 ft. I.D. 2 1/4 in.
Weight 9.1 Water Loss 6.0 cc. Weight Pipe Length 0 ft. I.D. 2 7/8 in.
Chlorides 700 P.P.M. Drill Pipe Length 3650 ft. I.D. 3 1/2 in.
Jars: Make STERLING Serial Number 6 Test Tool Length 32 ft. Tool Size 3 1/2-IF in.
Did Well Flow? No Reversed Out No Anchor Length 60 ft. Size 4 1/2-FH in.
Main Hole Size 7 7/8 Tool Joint Size 4 1/2 XH in. ^{31' Drill Pipe in Anchor} Surface Choke Size 1 in. Bottom Choke Size 5/8 in.

Blow: 1st Open: Weak Surface Blow, No Blowback
2nd Open: Dead

Recovered 15 ft. of Free Oil
Recovered 150 ft. of OCM 10% Oil, 90% Mud
Recovered 165 ft. of TOTAL FLUID

Recovered _____ ft. of _____	Price Job
Recovered _____ ft. of <u>60' Gas In Pipe</u>	Other Charges
Recovered _____ ft. of _____	Insurance
Remarks: <u>GRAVITY: 39</u>	
Tool Sample: <u>Oil Cut Mud, 25% Oil, 75% Mud</u>	
	Total

Time Set Packer(s) 10:58 AM A.M. P.M. Time Started Off Bottom 2:33 PM A.M. P.M. Maximum Temperature 115

Initial Hydrostatic Pressure..... (A) 1858 P.S.I.
Initial Flow Period..... Minutes 5 (B) 11 P.S.I. to (C) 37 P.S.I.
Initial Closed In Period..... Minutes 30 (D) 805 P.S.I.
Final Flow Period..... Minutes 60 (E) 34 P.S.I. to (F) 85 P.S.I.
Final Closed In Period..... Minutes 120 (G) 796 P.S.I.
Final Hydrostatic Pressure..... (H) 1853 P.S.I.

Diamond Testing shall not be liable for damages of any kind to the property or personnel of the one for whom a test is made or for any loss suffered or sustained, directly or indirectly, through the use of its equipment, or its statement or opinion concerning the result of any test. Tools lost or damaged in the hole shall be paid for at cost by the party for whom the test is made.