

KEVIN L. KESSLER
CONSULTING PETROLEUM GEOLOGIST
 (316) 522-7338

OPERATOR : MULL DRILLING COMPANY INC.
LEASE : ERB UNIT WELL # : 1 - 24
LOCATION : 105' FNL & 1535' FWL
SEC: 24 TWP : 19 S RGE : 23 W
COUNTY : NESS STATE : KANSAS

ELEVATION
KB : 2234'
GL : 2229'
 MEASUREMENTS FROM
KB

CONTRACTOR : WW DRILLING RIG # 6
COMM : 05 / 07 / 2014 COMP : 05 / 14 / 2014
RTD : 4475 LOG TD : 4476
SAMPLES SAVED FROM : 3600 TO : RTD
GEOLOGICAL SUPERVISION FROM : 3600 TO : RTD
MUD UP : 3500 TYPE MUD : CHEMICAL

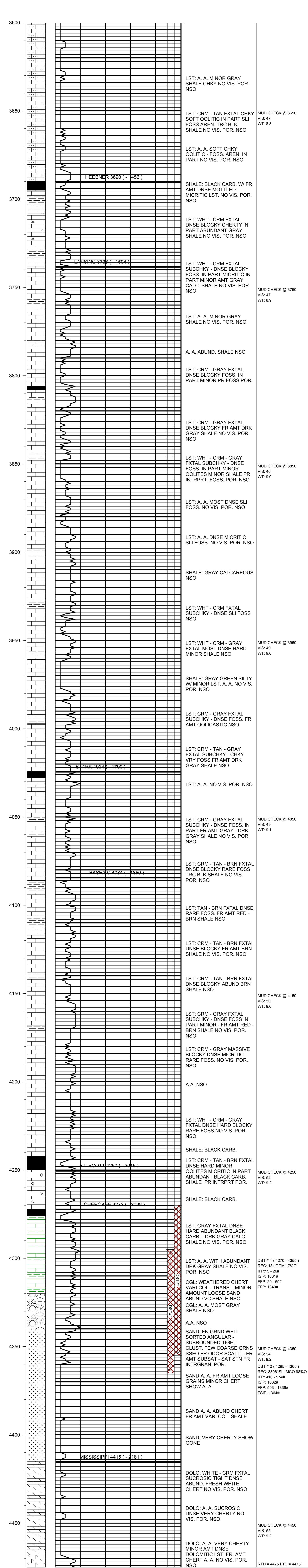
CASING RECORD
SURFACE :
 8 5/8" @ 216'
PRODUCTION :
 5 1/2" @ 4475'

ELECTRICAL SURVEYS:

FORMATION	TOP	SAMPLE	DATUM	TOP	LOG	DATUM	STRUCT. COMP.
HEEBNER	3690	- 1456	3690	- 1456		- 1456	+ 07
LANSING	3738	- 1504	3738	- 1504		- 1504	+ 06
STARK	4024	- 1790	4024	- 1790		- 1790	+ 07
BASE/KC	4084	- 1850	4084	- 1850		- 1850	+ 10
FORT SCOTT	4250	- 2016	4250	- 2016		- 2016	+ 10
CHEROKEE	4272	- 2038	4272	- 2038		- 2038	+ 13
MISSISSIPPI	4415	- 2118	4415	- 2118		- 2118	- 25

REFERENCE WELL FOR STRUCTURAL COMPARISON :
 MULL DRLG CO INC # 1 - 23 BYRD SEC 23 - T 19 S - R 23 W NESS COUNTY KANSAS

CDL/CNL
DIL
MICRO
SONIC



COMMENTS:
 5 1/2" PRODUCTION CASING WAS SET TO FURTHER TEST
 THE PRODUCTIVITY OF THIS WELL
 KEVIN L. KESSLER