



**TRILOBITE
TESTING, INC**

DRILL STEM TEST REPORT

Samuel Gary Jr & Associates, Inc.

6/2s/36w Rawlins KS

1515 Wynkoop STE 700
Denver, CO 80202

Krueger Trust #1-6

Job Ticket: 60059

DST#: 3

ATTN: Clayton Camozzi

Test Start: 2014.08.21 @ 04:10:00

GENERAL INFORMATION:

Formation: **Douglas Sand**

Deviated: No Whipstock: ft (KB)

Time Tool Opened: 08:03:15

Time Test Ended: 14:49:30

Test Type: Conventional Bottom Hole (Reset)

Tester: James Winder

Unit No: 57

Interval: 4190.00 ft (KB) To 4242.00 ft (KB) (TVD)

Reference Elevations: 3321.00 ft (KB)

Total Depth: 4242.00 ft (KB) (TVD)

3316.00 ft (CF)

Hole Diameter: 7.88 inches Hole Condition: Fair

KB to GR/CF: 5.00 ft

Serial #: 8320 Outside

Press@RunDepth: 152.58 psig @ 4191.00 ft (KB)

Capacity: 8000.00 psig

Start Date: 2014.08.21

End Date:

2014.08.21

Last Calib.:

2014.08.21

Start Time: 04:10:05

End Time:

14:49:30

Time On Btm:

2014.08.21 @ 08:02:45

Time Off Btm:

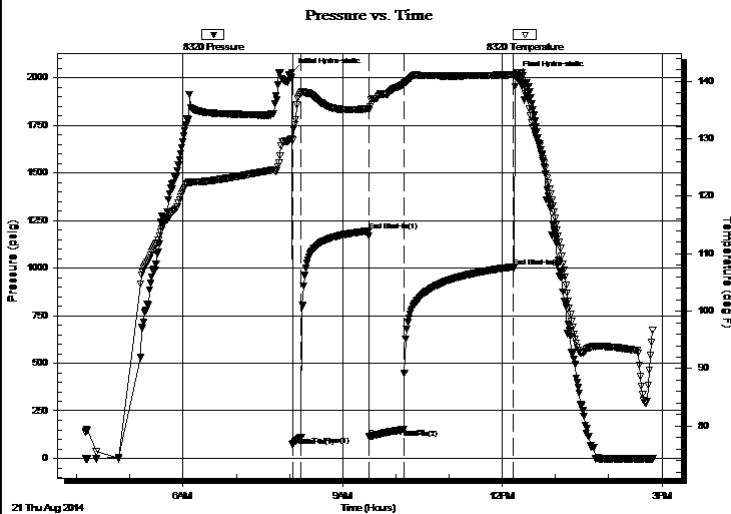
2014.08.21 @ 12:15:15

TEST COMMENT: 10 - IF: 3 1/4" surge blow at open, built to 6 1/2"

75 - IS: No blow back

40 - FF: Blow built to 7 1/2"

120 - FS: No blow back



PRESSURE SUMMARY

Time (Min.)	Pressure (psig)	Temp (deg F)	Annotation
0	2025.33	129.98	Initial Hydro-static
1	70.97	129.75	Open To Flow (1)
11	110.10	137.92	Shut-In(1)
87	1194.33	135.21	End Shut-In(1)
87	112.62	134.94	Open To Flow (2)
127	152.58	139.50	Shut-In(2)
249	1005.69	141.10	End Shut-In(2)
253	2012.93	141.06	Final Hydro-static

Recovery

Length (ft)	Description	Volume (bbl)
124.00	MCW w/trace oil 68%w, 32%m	0.61
62.00	WCM 85%m, 15%w	0.30
114.00	Mud 100%	1.60

Gas Rates

	Choke (inches)	Pressure (psig)	Gas Rate (Mcf/d)

* Recovery from multiple tests



**TRILOBITE
TESTING, INC.**

DRILL STEM TEST REPORT

Samuel Gary Jr & Associates, Inc.

6/2s/36w Rawlins KS

1515 Wynkoop STE 700
Denver, CO 80202

Krueger Trust #1-6

Job Ticket: 60059

DST#: 3

ATTN: Clayton Camozzi

Test Start: 2014.08.21 @ 04:10:00

GENERAL INFORMATION:

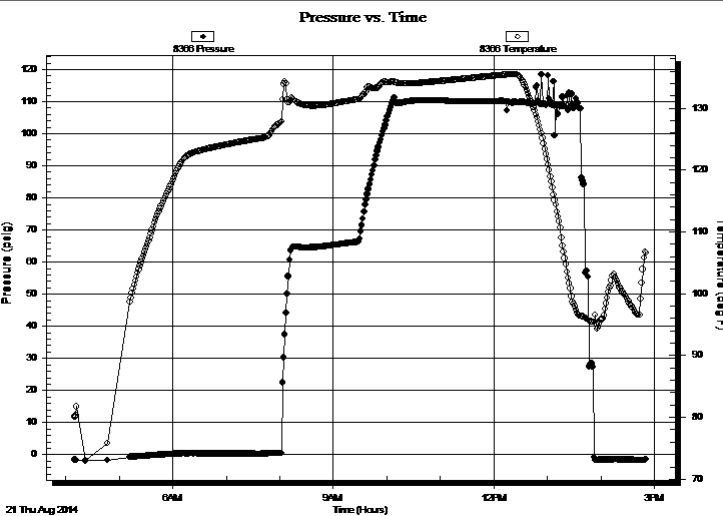
Formation: **Douglas Sand**
 Deviated: No Whipstock: ft (KB)
 Test Type: Conventional Bottom Hole (Reset)
 Time Tool Opened: 08:03:15 Tester: James Winder
 Time Test Ended: 14:49:30 Unit No: 57
 Interval: **4190.00 ft (KB) To 4242.00 ft (KB) (TVD)** Reference Elevations: 3321.00 ft (KB)
 Total Depth: 4242.00 ft (KB) (TVD) 3316.00 ft (CF)
 Hole Diameter: 7.88 inches Hole Condition: Fair KB to GR/CF: 5.00 ft

Serial #: 8366

Fluid

Press@RunDepth: psig @ 4101.00 ft (KB) Capacity: 8000.00 psig
 Start Date: 2014.08.21 End Date: 2014.08.21 Last Calib.: 2014.08.21
 Start Time: 04:10:05 End Time: 14:50:45 Time On Btm:
 Time Off Btm:

TEST COMMENT: 10 - IF: 3 1/4" surge blow at open, built to 6 1/2"
 75 - ISI: No blow back
 40 - FF: Blow built to 7 1/2"
 120 - FSI: No blow back



PRESSURE SUMMARY

Time (Min.)	Pressure (psig)	Temp (deg F)	Annotation

Recovery

Length (ft)	Description	Volume (bbl)
124.00	MCW w/trace oil 68%w , 32%m	0.61
62.00	WCM 85%m, 15%w	0.30
114.00	Mud 100%	1.60

Gas Rates

	Choke (inches)	Pressure (psig)	Gas Rate (Mcf/d)

* Recovery from multiple tests



**TRILOBITE
TESTING, INC**

DRILL STEM TEST REPORT

FLUID SUMMARY

Samuel Gary Jr & Associates, Inc.

6/2s/36w Rawlins KS

1515 Wynkoop STE 700
Denver, CO 80202

Krueger Trust #1-6

Job Ticket: 60059

DST#: 3

ATTN: Clayton Camozzi

Test Start: 2014.08.21 @ 04:10:00

Mud and Cushion Information

Mud Type: Gel Chem

Cushion Type:

Oil API:

deg API

Mud Weight: 9.00 lb/gal

Cushion Length:

ft

Water Salinity:

16000 ppm

Viscosity: 53.00 sec/qt

Cushion Volume:

bbbl

Water Loss: 6.80 in³

Gas Cushion Type:

Resistivity: ohm.m

Gas Cushion Pressure:

psig

Salinity: 600.00 ppm

Filter Cake: 2.00 inches

Recovery Information

Recovery Table

Length ft	Description	Volume bbl
124.00	MCW w /trace oil 68%w , 32%m	0.610
62.00	WCM 85%m, 15%w	0.305
114.00	Mud 100%	1.599

Total Length: 300.00 ft Total Volume: 2.514 bbl

Num Fluid Samples: 0

Num Gas Bombs: 0

Serial #:

Laboratory Name:

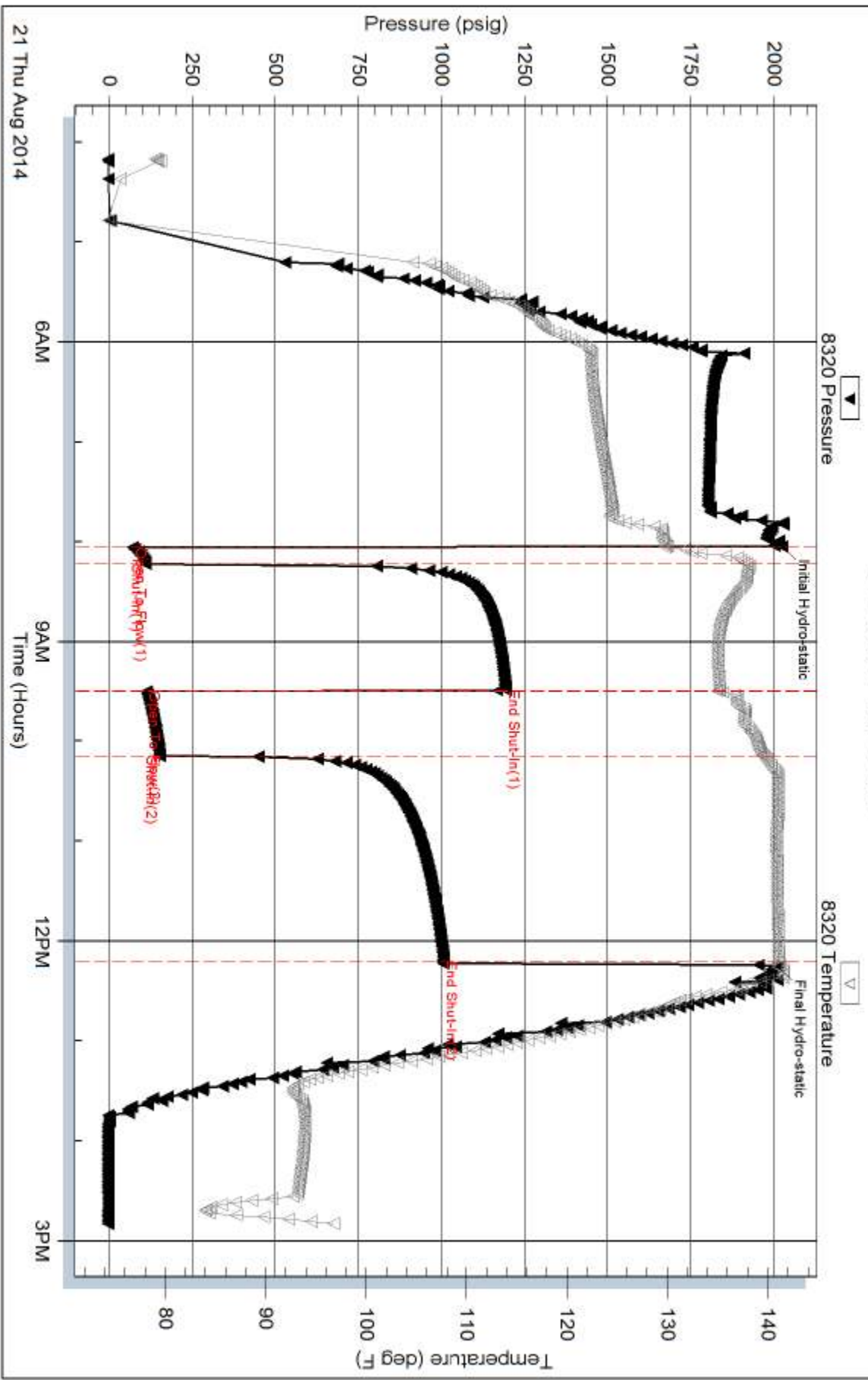
Laboratory Location:

Recovery Comments: RW = .283 ohms @ 105.6 deg F Chlorides = 16,000 ppm

Sampler = 150 PSI, 2400 mL MCW 90%w , 10%w w /trace oil

Sampler RW = .241 ohms @ 110.1 deg F Chlorides = 18,000 ppm

Pressure vs. Time



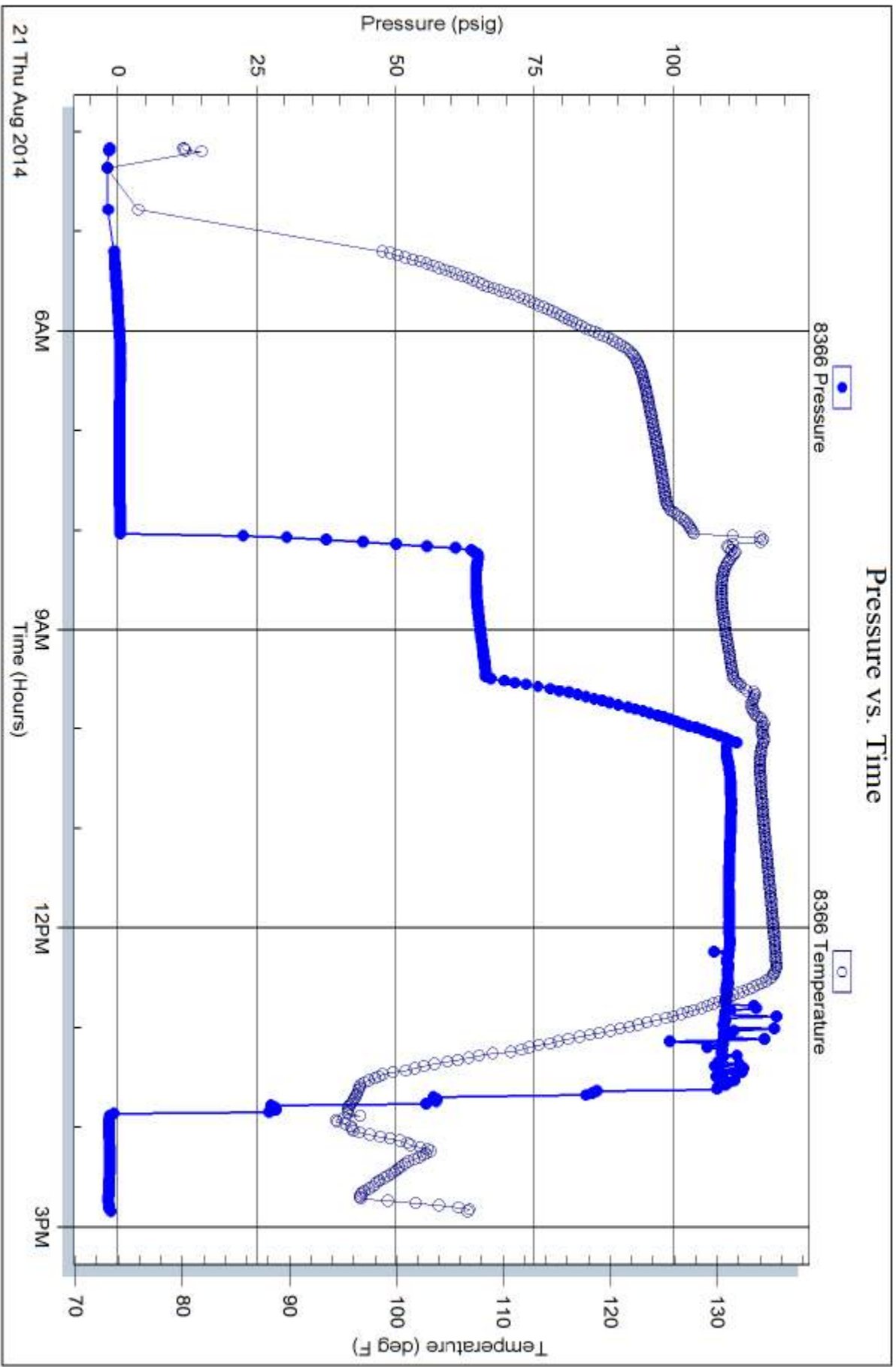
Serial #: 8366

Fluid

Samuel Gary Jr & Associates, Inc.

Krueger Trust #1-6

DST Test Number: 3



Trilobite Testing, Inc

Ref. No: 60059

Printed: 2014.08.21 @ 16:16:15