



**TRILOBITE  
TESTING, INC.**

# DRILL STEM TEST REPORT

Samuel Gary Jr & Associates, Inc.

**6/2s/36w Rawlins KS**

1515 Wynkoop STE 700  
Denver, CO 80202

**Krueger Trust #1-6**

ATTN: Clayton Camozzi

Job Ticket: 60062

**DST#: 6**

Test Start: 2014.08.24 @ 01:30:00

## GENERAL INFORMATION:

Formation: **LKC "H"**

Deviated: No Whipstock: ft (KB)

Time Tool Opened: 04:40:00

Time Test Ended: 10:24:45

Test Type: Conventional Bottom Hole (Reset)

Tester: James Winder

Unit No: 57

**Interval: 4386.00 ft (KB) To 4438.00 ft (KB) (TVD)**

Reference Elevations: 3321.00 ft (KB)

Total Depth: 4438.00 ft (KB) (TVD)

3316.00 ft (CF)

Hole Diameter: 7.88 inches Hole Condition: Fair

KB to GR/CF: 5.00 ft

**Serial #: 8791**

**Inside**

Press @ Run Depth: 19.39 psig @ 4387.00 ft (KB)

Capacity: 8000.00 psig

Start Date: 2014.08.24

End Date:

2014.08.24

Last Calib.:

2014.08.24

Start Time: 01:30:05

End Time:

10:24:45

Time On Btm:

2014.08.24 @ 04:39:45

Time Off Btm:

2014.08.24 @ 07:31:00

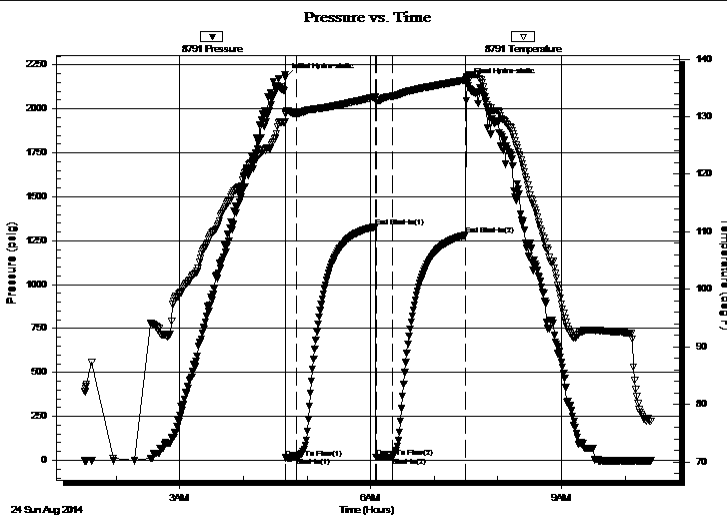
**TEST COMMENT:** 10 - IF: Blow built to about 1/2"

75 - IS: No blow back

15 - FF: No blow

70 - FS: No blow back

## PRESSURE SUMMARY



Time (Min.)	Pressure (psig)	Temp (deg F)	Annotation
0	2179.16	130.71	Initial Hydro-static
1	14.25	130.56	Open To Flow (1)
11	15.42	130.51	Shut-In(1)
85	1329.27	133.43	End Shut-In(1)
86	17.24	132.88	Open To Flow (2)
101	19.39	133.51	Shut-In(2)
170	1282.11	136.35	End Shut-In(2)
172	2148.00	136.62	Final Hydro-static

## Recovery

Length (ft)	Description	Volume (bbl)
5.00	Mud w /oil spots 98%m, 2%o	0.02

## Gas Rates

Choke (inches)	Pressure (psig)	Gas Rate (Mcf/d)

\* Recovery from multiple tests







**TRILOBITE  
TESTING, INC.**

# DRILL STEM TEST REPORT

**FLUID SUMMARY**

Samuel Gary Jr & Associates, Inc.

**6/2s/36w Rawlins KS**

1515 Wynkoop STE 700  
Denver, CO 80202

**Krueger Trust #1-6**

Job Ticket: 60062

**DST#: 6**

ATTN: Clayton Camozzi

Test Start: 2014.08.24 @ 01:30:00

## Mud and Cushion Information

Mud Type: Gel Chem

Cushion Type:

Oil API:

deg API

Mud Weight: 9.00 lb/gal

Cushion Length:

ft

Water Salinity:

ppm

Viscosity: 64.00 sec/qt

Cushion Volume:

bbbl

Water Loss: 4.79 in<sup>3</sup>

Gas Cushion Type:

Resistivity: ohm.m

Gas Cushion Pressure:

psig

Salinity: 1000.00 ppm

Filter Cake: 2.00 inches

## Recovery Information

Recovery Table

Length ft	Description	Volume bbl
5.00	Mud w /oil spots 98% <sub>m</sub> , 2% <sub>o</sub>	0.025

Total Length: 5.00 ft      Total Volume: 0.025 bbl

Num Fluid Samples: 0

Num Gas Bombs: 0

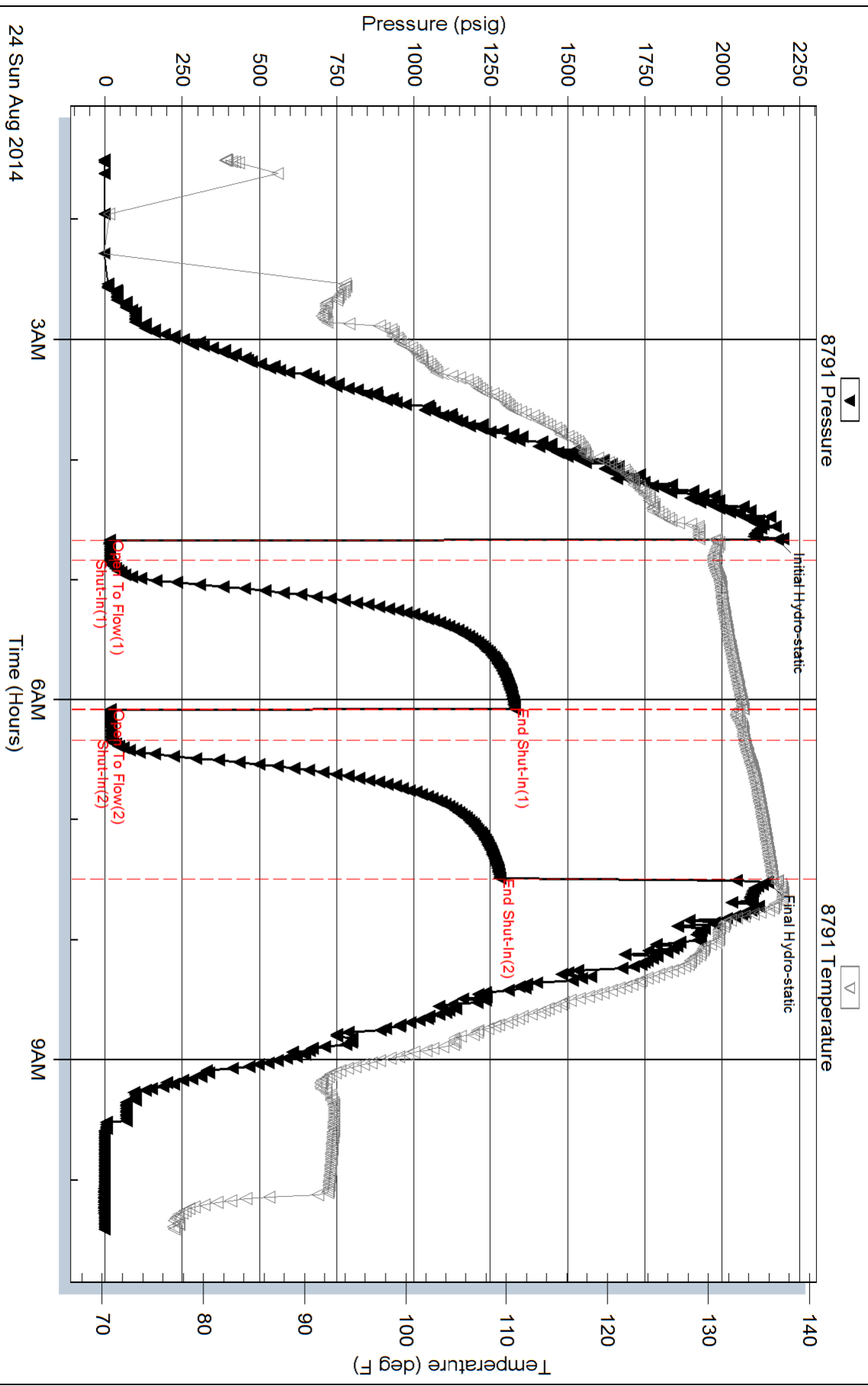
Serial #:

Laboratory Name:

Laboratory Location:

Recovery Comments: Sampler = 140 psi, 2000 mL Mud100% w ith trace of oil

# Pressure vs. Time

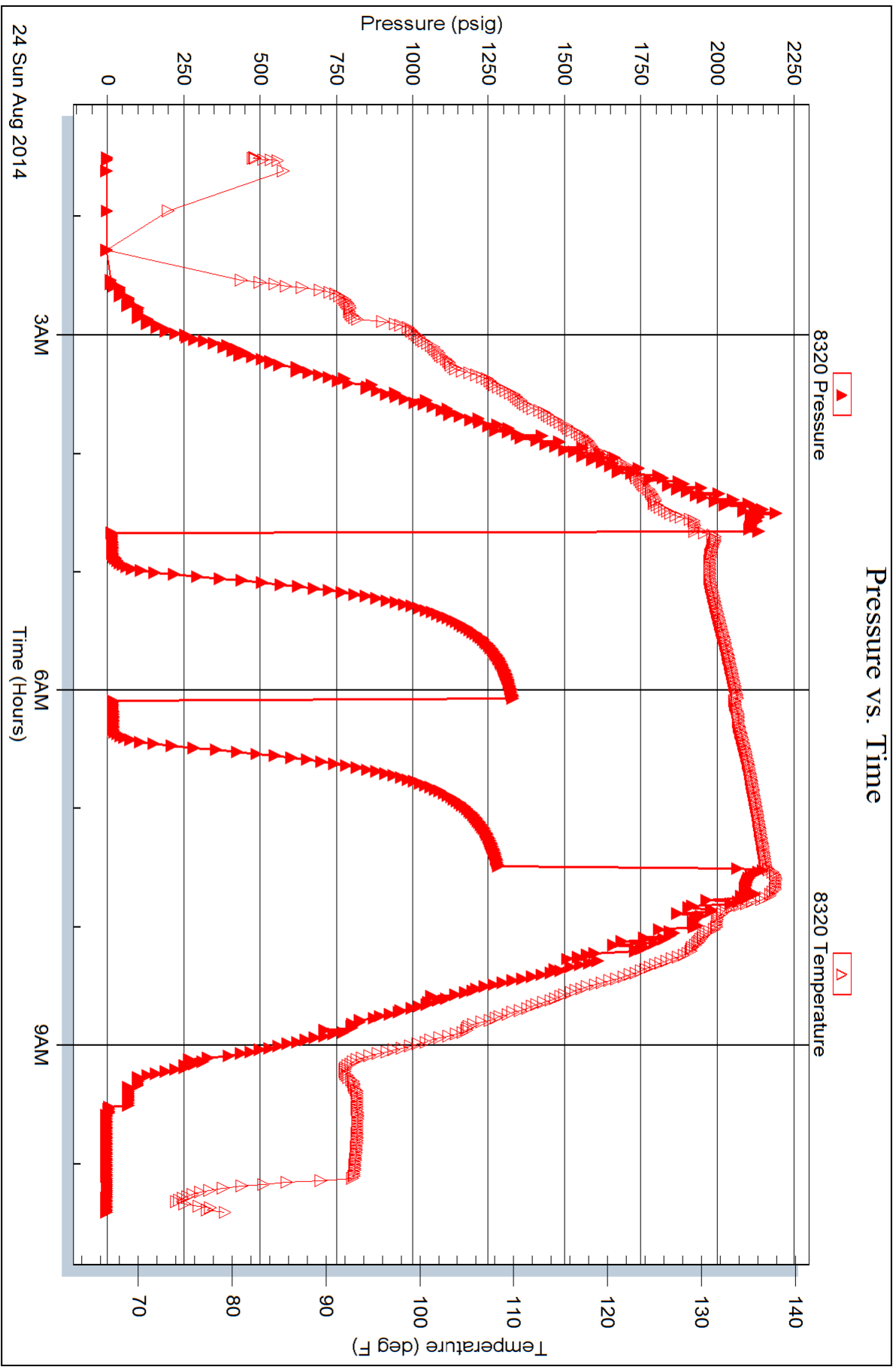


Serial #: 8320

Outside Samuel Gary Jr & Associates, Inc.

Krueger Trust #1-6

DST Test Number: 6



Serial #: 8366

Fluid

Samuel Gary Jr & Associates, Inc.

Krueger Trust #1-6

DST Test Number: 6

