

APT # 15-1163-24220-00-00

GEOLOGICAL REPORT
DRILLING TIME AND SAMPLE LOG

COMPANY Briker Enterprises, LLC
LEASE Knipp NE # 36-3
FIELD Wildcat
LOCATION 1400 F.W.L. # 990 KEL
SEC 36 TWP 7S RGE 20W
COUNTY Boaks STATE Kansas
CONTRACTOR WLD Drilling Rig #12
SPUD 11-4-14 COMP 11-9-14
SAMPLES SAVED FROM 2920 TO RTD.

ELEVATION
KB 1973
DF 1971
GL 1965
Depths Measured From Log KB Drilling KB
CASING
Surface 8 5/8" @ 220'
Production None
ELECTRIC LOGS
Pioneer

FORMATION TOPS AND STRUCTURAL POSITION

FORMATION	SAMPLE	E. LOG	DATUM	A	B	C	D
Anhydrite	1491	1490 +	478	+ 488			
Base Anhydrite	1524	1524 +	449	+ 453			
Tapoka	2953	2951 -	978	- 966			
Heebner	3156	3153 -	1180	- 1168			
Taranto	3180	3177 -	1204	- 1194			
Lansing	3198	3194 -	1221	- 1208			
Base Kansas City	3405	3403 -	1430	- 1418			
Arbuckle	3448	3445 -	1472	- 1457			
Total Depth	3500	3498 -	1525	- 1501			

REFERENCE WELLS

A Briker Enterprises, LLC, Miller # 31-1, 1223 F.W.L. # 837 F.W.L. Sec 31- 7S-20W
B
C

REMARKS

This well ran 13 feet lower on the Lansing top and 15 feet lower on the Arbuckle top than the reference well. After reviewing the open hole logs and considering the low structural position it was decided this well should be plugged and abandoned.

*Richard B. Bell
11-10-14*

LEGEND



DRILLING TIME IN MINUTES PER FOOT Rate of Penetration Decreases	DEPTH	LITHOLOGY	SAMPLE DESCRIPTIONS	OIL SHOWS	REMARKS
5" 10" 15" 20" 25"	1480				

Base Anhydrite

1520

2800

20

40

60

80

2900

20

40

-conn

-conn

-conn

-conn

-conn

-conn

LS: gry fslf dns

sh: gry

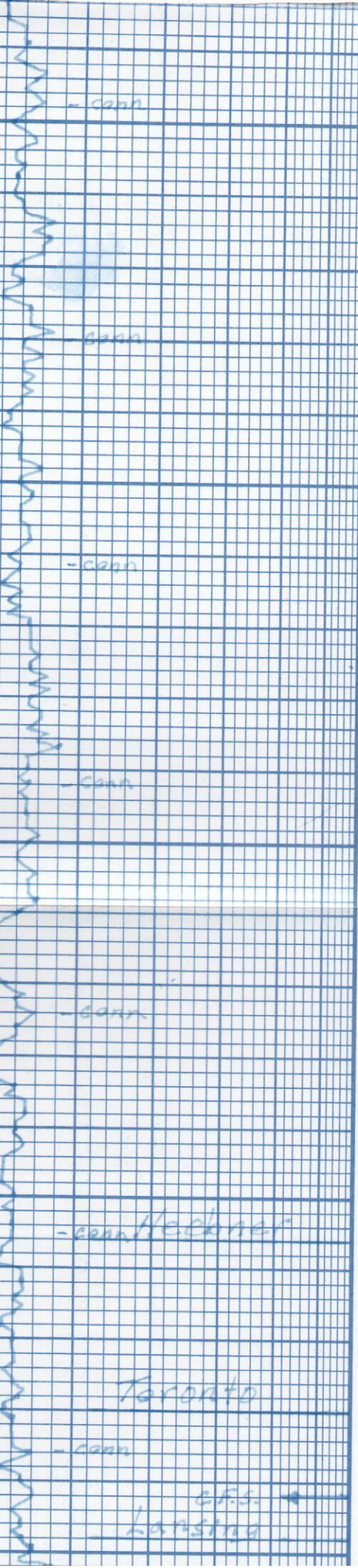
LS: tn-gry mtld fslf dns

LS: tn-gry mtld fslf dns

sh: brn slty + gry

Samples are lagged
good samples

Topeka

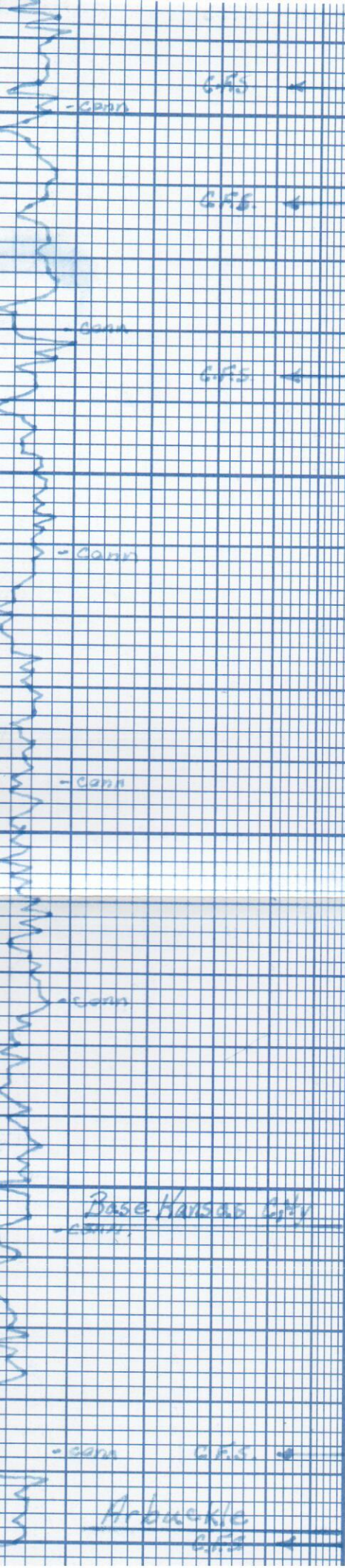


3000	LS: wh-tn - gry cky - fs/f dns N.S.G.
	Tr. blk carb sh.
	LS: tn - gry fs/f dns Δ drk gry fs/f sh: gry stly
20	LS: wh-tn - gry cky - fs/f Tr. fxln dns N.S.G.
	LS: wh-tn cky - fs/f ppφ friable N.S.G. Δtn
40	LS: wh-tn - lt. gry cky - fs/f ppφ N.S.G.
	sh: blk carb
	LS: tn - gry fs/f dns
60	sh: brn slty + gry
	LS: wh-tn sli. cky - fxln - fs/f dns N.S.G.
80	LS: wh-tn sli. cky - Tr. fxln - fs/f dns N.S.G.
	sh: brn slty + gry
3100	LS: tn - gry fs/f dns
	sh: blk carb
	LS: gry fs/f dns
20	Dol: wh-tn fxln inclnd N.S.G.
	LS: wh-tn sli. cky - fs/f pr. ppφ - Tr. vgy φ brn sptd 0 Str N.F.G. No odor Δtn
40	Dol: a.a.
	LS: tn - gry fxln - sli. fs/f dns N.S.G.
60	sh: blk carb
	LS: tn - gry fs/f dns
	sh: gry + brn
80	LS: wh-tn fs/f dns N.S.G.
	Δ wh-tn
	LS: tn - gry fxln dns
	sh: gry stly + brn
3200	Dol: wh-crm fxln inclnd

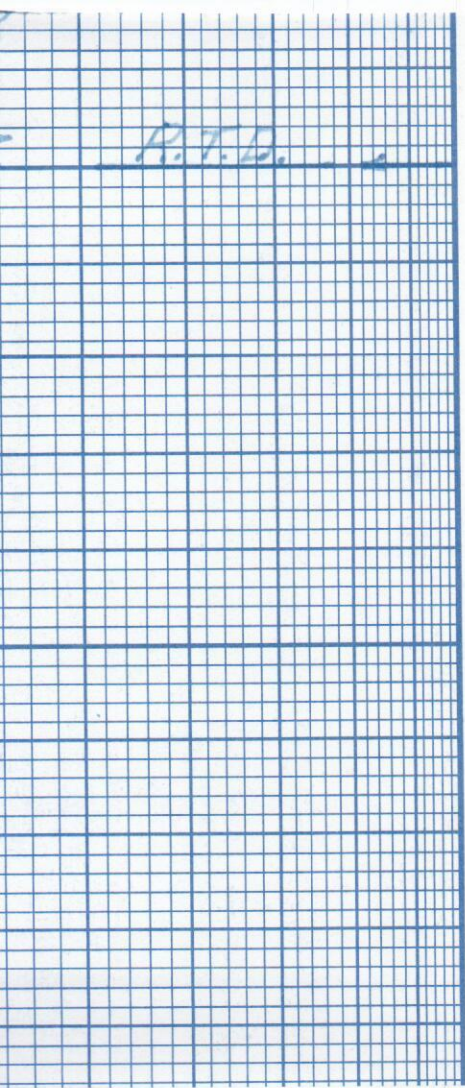
✓

Toronto

C.F.S.
Lansing



40	C	LS: wh-tn fxl'n sli. ool pp Tr. v. pr. ht. sptd Ostrn VRT pp F.O. ft. odor	✓
		sh: brn + gry	
60	D	LS: wh-tn - lt. gry cky. fxl'n N.S.O. No cut NO odor	
		sh: gry + brn	
	E	LS: wh-tn - lt. gry cky. fxl'n dns N.S.O.	
80	F	Dol: tn fxl'n incl'd N.S.O. LS: tn fxl'n dns tr glauc. sptd N.S.O.	
	G	LS: wh-tn cky. fxl'n Tr. ool w/ sli. fslf inclus. pr. pp Tr. Tr. pr. ht. Ostrn N.F.O. No odor	✓
3300		LS: tn fxl'n dns N.S.O. v. d+g wh-ar	
		sh: blk carb.	
20		LS: tn fslf dns	
		sh: gry + brn	
	H	LS: wh-tn sli. cky. fxl'n Tr. ool w/ fass inclus. pr. pp R.T. ht. Ostrn R.T. pp F.O. ft. odor	✓
40		LS: tn - lt. gry fxl'n dns & wh-tn	
	I	LS: tn fslf tr. pr. pp Tr. scat fr. sptd Ostrn R.T. pp F.O. fr odor	✓
60			
	J	LS: wh-tn - lt. gry sli. cky. fxl'n dns N.S.O.	
80		sh: gry + brn	
	K	LS: wh-tn - lt. gry sli. cky. fxl'n sli. fslf pr. pp Tr. Tr. ht. sptd Ostrn N.F.O. No odor	✓
3400	L	LS: tn - gry fslf dns R.T. ht sptd Ostrn N.F.O.	✓?
		sh: gry + brn	
20		LS: wh-tn sli. cky. fxl'n sli. fslf dns N.S.O.	
		Dol: wh-tn fxl'n pr. incl'd N.S.O. & wh-ar sh: brn + gry	
40		LS: wh-tn - brn fxl'n - sli. fslf dns N.S.O. Tr Dol: tn fxl'n dns N.S.O.	
		Dol: tn - vel. fxl'n	



P.T.D.

3500

/ / / / /	No. of ... fcln mostly barren
/ / / / /	Roi: white fcln - mcln incln & mostly barren
/ / / / /	
/ / / / /	
/ / / / /	
/ / / / /	
/ / / / /	
/ / / / /	
/ / / / /	
/ / / / /	
/ / / / /	
/ / / / /	
/ / / / /	
/ / / / /	
/ / / / /	
/ / / / /	
/ / / / /	
/ / / / /	
/ / / / /	
/ / / / /	
/ / / / /	

Board ...
Diff .16
Incline @ 3500' 1°