



DRILL STEM TEST REPORT

Prepared For: **Charter Energy Inc**

PO Box 252
Great Bend KS 67530-0250

ATTN: Steve Baize

Johnston #2

24-13s-20w Ellis,KS

Start Date: 2014.10.02 @ 23:15:38

End Date: 2014.10.03 @ 04:59:02

Job Ticket #: 60884 DST #: 1

Trilobite Testing, Inc
1515 Commerce Parkway Hays, KS 67601
ph: 785-625-4778 fax: 785-625-5620

Printed: 2014.10.07 @ 15:44:54



**TRILOBITE
TESTING, INC**

DRILL STEM TEST REPORT

Charter Energy Inc
 PO Box 252
 Great Bend KS 67530-0250
 ATTN: Steve Baize

24-13s-20w Ellis,KS
Johnston #2
 Job Ticket: 60884 **DST#: 1**
 Test Start: 2014.10.02 @ 23:15:38

GENERAL INFORMATION:

Formation: **LKC A-D**
 Deviated: No Whipstock: ft (KB)
 Time Tool Opened: 00:58:33
 Time Test Ended: 04:59:02
 Interval: **3444.00 ft (KB) To 3500.00 ft (KB) (TVD)**
 Total Depth: 3500.00 ft (KB) (TVD)
 Hole Diameter: 7.85 inches Hole Condition: Fair
 Test Type: Conventional Bottom Hole (Initial)
 Tester: Ray Schwager
 Unit No: 70
 Reference Elevations: 2116.00 ft (KB)
 2111.00 ft (CF)
 KB to GR/CF: 5.00 ft

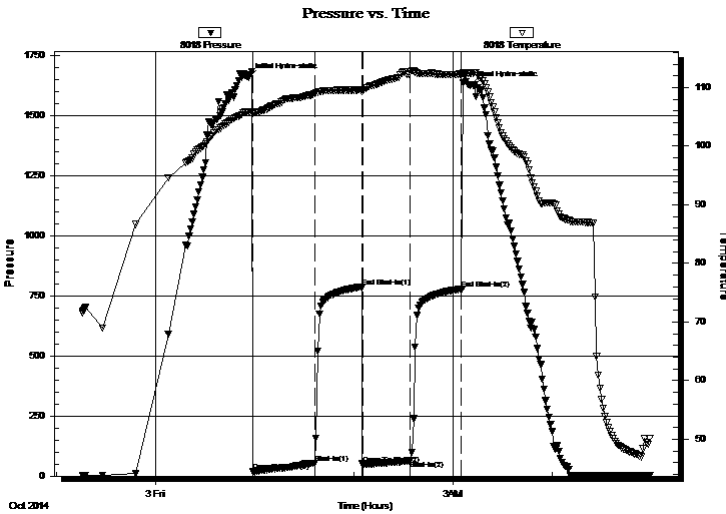
Serial #: 8018

Inside

Press@RunDepth: 64.38 psig @ 3446.00 ft (KB) Capacity: 8000.00 psig
 Start Date: 2014.10.02 End Date: 2014.10.03 Last Calib.: 2014.10.03
 Start Time: 23:15:38 End Time: 04:59:02 Time On Btm: 2014.10.03 @ 00:56:03
 Time Off Btm: 2014.10.03 @ 03:10:03

TEST COMMENT: 30-IFP-w k bl thru-out 1/2" to 2 1/2" bl
 30-ISIP-no bl
 30-FFP-w k bl thru-out 1/4" bl
 30-FSIP-no bl

PRESSURE SUMMARY



Time (Min.)	Pressure (psig)	Temp (deg F)	Annotation
0	1658.27	105.87	Initial Hydro-static
3	18.94	105.59	Open To Flow (1)
40	52.27	108.96	Shut-In(1)
69	785.02	109.64	End Shut-In(1)
70	47.58	109.49	Open To Flow (2)
98	64.38	112.66	Shut-In(2)
129	777.92	112.29	End Shut-In(2)
134	1624.27	112.42	Final Hydro-static

Recovery

Length (ft)	Description	Volume (bbl)
90.00	WM 40%W60%M	1.26

Gas Rates

Choke (inches)	Pressure (psig)	Gas Rate (Mcf/d)



**TRILOBITE
TESTING, INC**

DRILL STEM TEST REPORT

TOOL DIAGRAM

Charter Energy Inc

24-13s-20w Ellis,KS

PO Box 252
Great Bend KS 67530-0250

Johnston #2

Job Ticket: 60884

DST#: 1

ATTN: Steve Baize

Test Start: 2014.10.02 @ 23:15:38

Tool Information

Drill Pipe:	Length: 3453.00 ft	Diameter: 3.80 inches	Volume: 48.44 bbl	Tool Weight: 2200.00 lb
Heavy Wt. Pipe:	Length: 0.00 ft	Diameter: 0.00 inches	Volume: 0.00 bbl	Weight set on Packer: 25000.00 lb
Drill Collar:	Length: 0.00 ft	Diameter: 0.00 inches	Volume: 0.00 bbl	Weight to Pull Loose: 70000.00 lb
			<u>Total Volume: 48.44 bbl</u>	Tool Chased 0.00 ft
Drill Pipe Above KB:	30.00 ft			String Weight: Initial 54000.00 lb
Depth to Top Packer:	3444.00 ft			Final 55000.00 lb
Depth to Bottom Packer:	ft			
Interval between Packers:	56.00 ft			
Tool Length:	77.00 ft			
Number of Packers:	2	Diameter: 6.75 inches		

Tool Comments:

Tool Description

Tool Description	Length (ft)	Serial No.	Position	Depth (ft)	Accum. Lengths
Change Over Sub	1.00			3424.00	
Shut In Tool	5.00			3429.00	
Hydraulic tool	5.00			3434.00	
Packer	5.00			3439.00	21.00 Bottom Of Top Packer
Packer	5.00			3444.00	
Stubb	1.00			3445.00	
Perforations	1.00			3446.00	
Recorder	0.00	8018	Inside	3446.00	
Recorder	0.00	8700	Outside	3446.00	
Blank Spacing	33.00			3479.00	
Perforations	18.00			3497.00	
Bullnose	3.00			3500.00	56.00 Bottom Packers & Anchor

Total Tool Length: 77.00



**TRILOBITE
TESTING, INC**

DRILL STEM TEST REPORT

FLUID SUMMARY

Charter Energy Inc

24-13s-20w Ellis,KS

PO Box 252
Great Bend KS 67530-0250

Johnston #2

Job Ticket: 60884

DST#: 1

ATTN: Steve Baize

Test Start: 2014.10.02 @ 23:15:38

Mud and Cushion Information

Mud Type: Gel Chem

Cushion Type:

Oil API:

deg API

Mud Weight: 9.00 lb/gal

Cushion Length:

ft

Water Salinity:

54000 ppm

Viscosity: 49.00 sec/qt

Cushion Volume:

bbbl

Water Loss: 7.73 in³

Gas Cushion Type:

Resistivity: ohm.m

Gas Cushion Pressure:

psig

Salinity: 1600.00 ppm

Filter Cake: 1.00 inches

Recovery Information

Recovery Table

Length ft	Description	Volume bbl
90.00	WM 40%W60%M	1.262

Total Length: 90.00 ft Total Volume: 1.262 bbl

Num Fluid Samples: 0

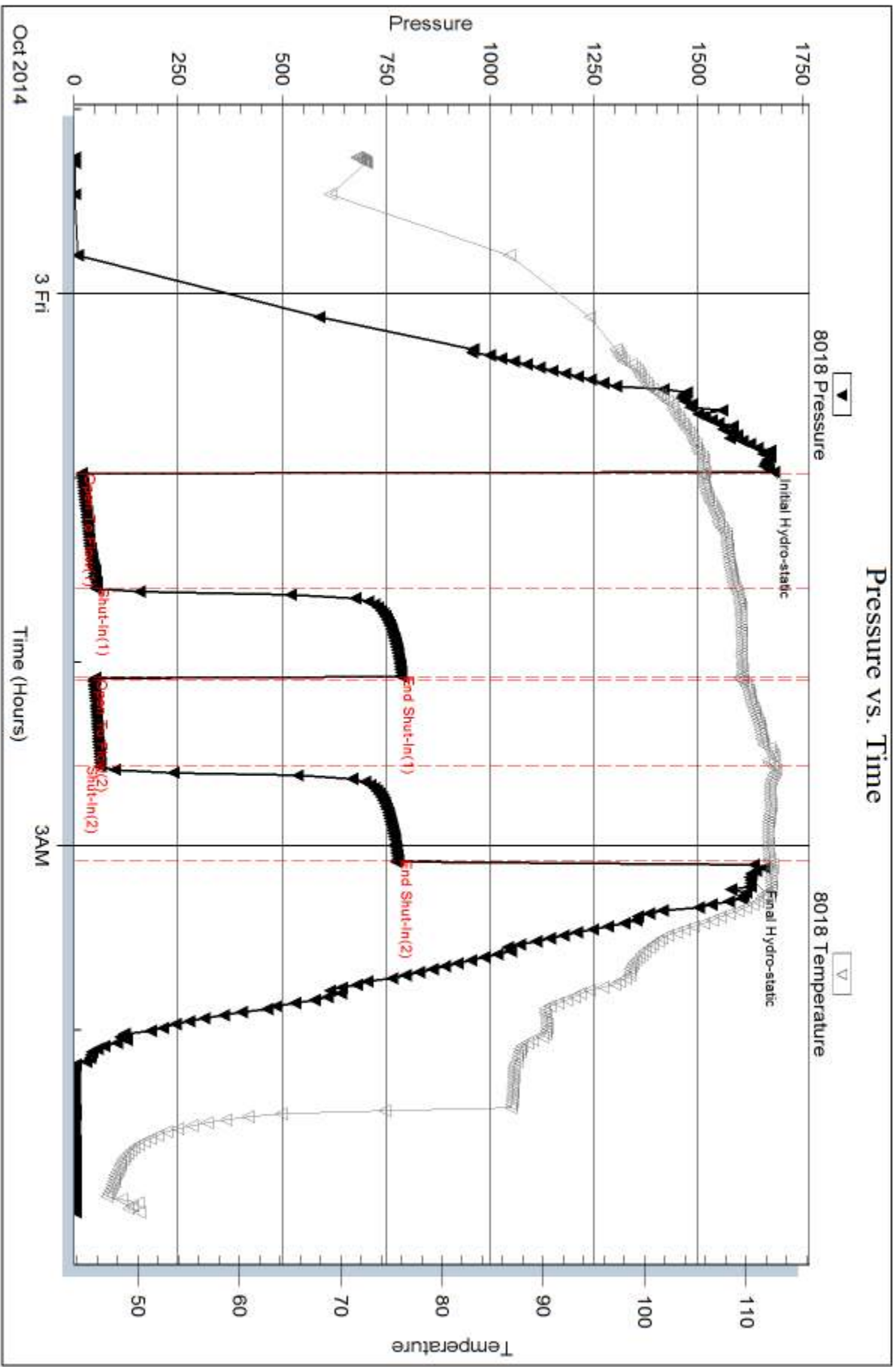
Num Gas Bombs: 0

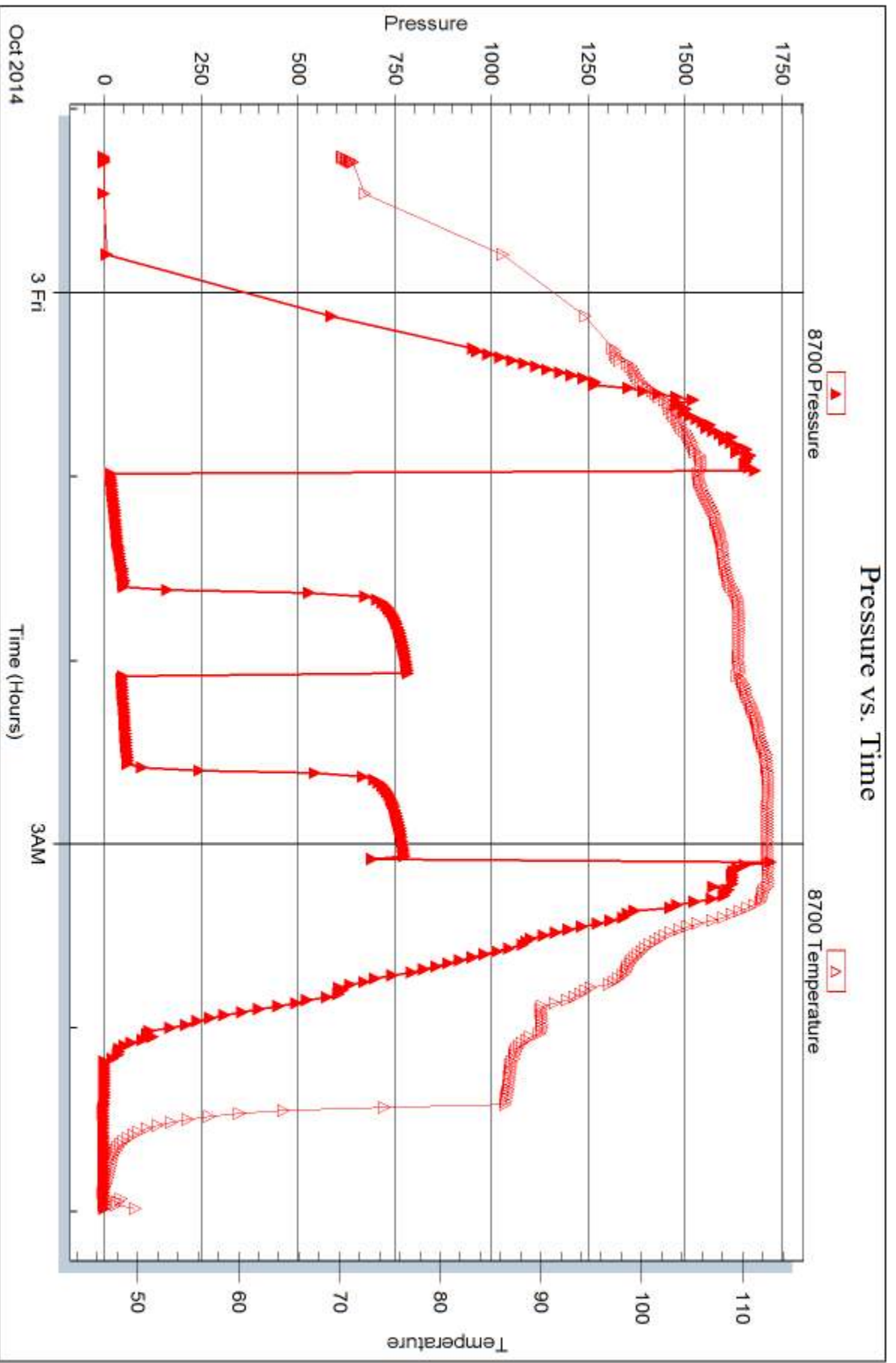
Serial #:

Laboratory Name:

Laboratory Location:

Recovery Comments: RW .15 65F







DRILL STEM TEST REPORT

Prepared For: **Charter Energy Inc**

PO Box 252
Great Bend KS 67530-0250

ATTN: Steve Baize

Johnston #2

24-13s-20w Ellis,KS

Start Date: 2014.10.03 @ 13:15:49

End Date: 2014.10.03 @ 19:15:13

Job Ticket #: 60885 DST #: 2

Trilobite Testing, Inc
1515 Commerce Parkway Hays, KS 67601
ph: 785-625-4778 fax: 785-625-5620

Printed: 2014.10.07 @ 15:44:20



TRILOBITE TESTING, INC

DRILL STEM TEST REPORT

Charter Energy Inc
 PO Box 252
 Great Bend KS 67530-0250
 ATTN: Steve Baize

24-13s-20w Ellis,KS
Johnston #2
 Job Ticket: 60885 **DST#: 2**
 Test Start: 2014.10.03 @ 13:15:49

GENERAL INFORMATION:

Formation: **LKC**
 Deviated: No Whipstock: ft (KB)
 Time Tool Opened: 14:43:14
 Time Test Ended: 19:15:13
 Interval: **3500.00 ft (KB) To 3545.00 ft (KB) (TVD)**
 Total Depth: 3545.00 ft (KB) (TVD)
 Hole Diameter: 7.85 inches Hole Condition: Fair
 Test Type: Conventional Bottom Hole (Reset)
 Tester: Ray Schwager
 Unit No: 70
 Reference Elevations: 2116.00 ft (KB)
 2111.00 ft (CF)
 KB to GR/CF: 5.00 ft

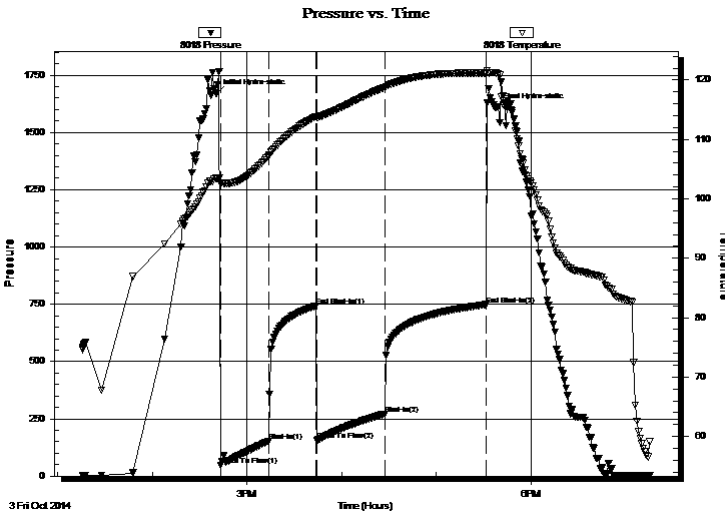
Serial #: 8018

Inside

Press@RunDepth: 271.63 psig @ 3509.00 ft (KB) Capacity: 8000.00 psig
 Start Date: 2014.10.03 End Date: 2014.10.03 Last Calib.: 2014.10.03
 Start Time: 13:15:49 End Time: 19:15:13 Time On Btm: 2014.10.03 @ 14:40:44
 Time Off Btm: 2014.10.03 @ 17:37:43

TEST COMMENT: 30-IFP-strg bl in 9 min
 30-ISIP-surface bl bk
 45-FFP-w k to strg in 17 min
 60-FSIP-no bl

PRESSURE SUMMARY



Time (Min.)	Pressure (psig)	Temp (deg F)	Annotation
0	1669.38	103.48	Initial Hydro-static
3	48.26	102.60	Open To Flow (1)
33	152.67	107.22	Shut-In(1)
63	742.95	113.85	End Shut-In(1)
64	156.52	113.63	Open To Flow (2)
107	271.63	118.76	Shut-In(2)
171	749.00	121.18	End Shut-In(2)
177	1607.00	121.17	Final Hydro-static

Recovery

Length (ft)	Description	Volume (bbl)
80.00	MW 40%M60%W	1.12
435.00	Water	6.10

* Recovery from multiple tests

Gas Rates

Choke (inches)	Pressure (psig)	Gas Rate (Mcf/d)



**TRILOBITE
TESTING, INC**

DRILL STEM TEST REPORT

TOOL DIAGRAM

Charter Energy Inc
 PO Box 252
 Great Bend KS 67530-0250
 ATTN: Steve Baize

24-13s-20w Ellis,KS
Johnston #2
 Job Ticket: 60885 **DST#: 2**
 Test Start: 2014.10.03 @ 13:15:49

Tool Information

Drill Pipe:	Length: 3485.00 ft	Diameter: 3.80 inches	Volume: 48.89 bbl	Tool Weight: 2200.00 lb
Heavy Wt. Pipe:	Length: 0.00 ft	Diameter: 0.00 inches	Volume: 0.00 bbl	Weight set on Packer: 25000.00 lb
Drill Collar:	Length: 0.00 ft	Diameter: 0.00 inches	Volume: 0.00 bbl	Weight to Pull Loose: 65000.00 lb
			<u>Total Volume: 48.89 bbl</u>	Tool Chased 0.00 ft
Drill Pipe Above KB:	6.00 ft			String Weight: Initial 53000.00 lb
Depth to Top Packer:	3500.00 ft			Final 55000.00 lb
Depth to Bottom Packer:	ft			
Interval between Packers:	45.00 ft			
Tool Length:	66.00 ft			
Number of Packers:	2	Diameter: 6.75 inches		

Tool Comments:

Tool Description	Length (ft)	Serial No.	Position	Depth (ft)	Accum. Lengths
-------------------------	--------------------	-------------------	-----------------	-------------------	-----------------------

Change Over Sub	1.00			3480.00	
Shut In Tool	5.00			3485.00	
Hydraulic tool	5.00			3490.00	
Packer	5.00			3495.00	21.00 Bottom Of Top Packer
Packer	5.00			3500.00	
Stubb	1.00			3501.00	
Perforations	8.00			3509.00	
Recorder	0.00	8018	Inside	3509.00	
Recorder	0.00	8700	Outside	3509.00	
Blank Spacing	33.00			3542.00	
Bullnose	3.00			3545.00	45.00 Bottom Packers & Anchor

Total Tool Length: 66.00



**TRILOBITE
TESTING, INC**

DRILL STEM TEST REPORT

FLUID SUMMARY

Charter Energy Inc

24-13s-20w Ellis,KS

PO Box 252
Great Bend KS 67530-0250

Johnston #2

Job Ticket: 60885

DST#: 2

ATTN: Steve Baize

Test Start: 2014.10.03 @ 13:15:49

Mud and Cushion Information

Mud Type: Gel Chem

Cushion Type:

Oil API:

deg API

Mud Weight: 9.00 lb/gal

Cushion Length:

ft

Water Salinity:

75000 ppm

Viscosity: 57.00 sec/qt

Cushion Volume:

bbbl

Water Loss: 7.92 in³

Gas Cushion Type:

Resistivity: ohm.m

Gas Cushion Pressure:

psig

Salinity: 4000.00 ppm

Filter Cake: 1.00 inches

Recovery Information

Recovery Table

Length ft	Description	Volume bbl
80.00	MW 40%M60%W	1.122
435.00	Water	6.102

Total Length: 515.00 ft Total Volume: 7.224 bbl

Num Fluid Samples: 0

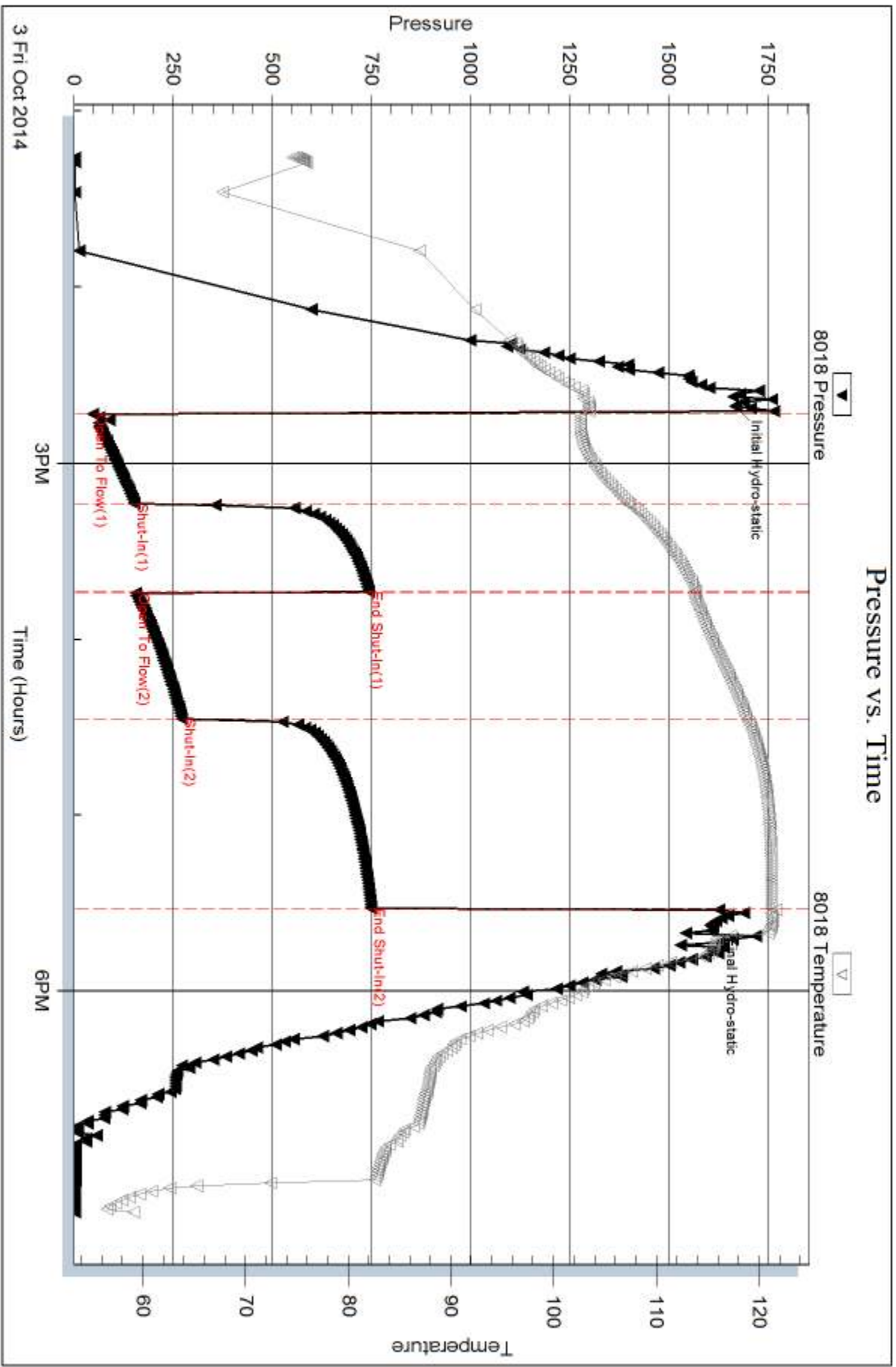
Num Gas Bombs: 0

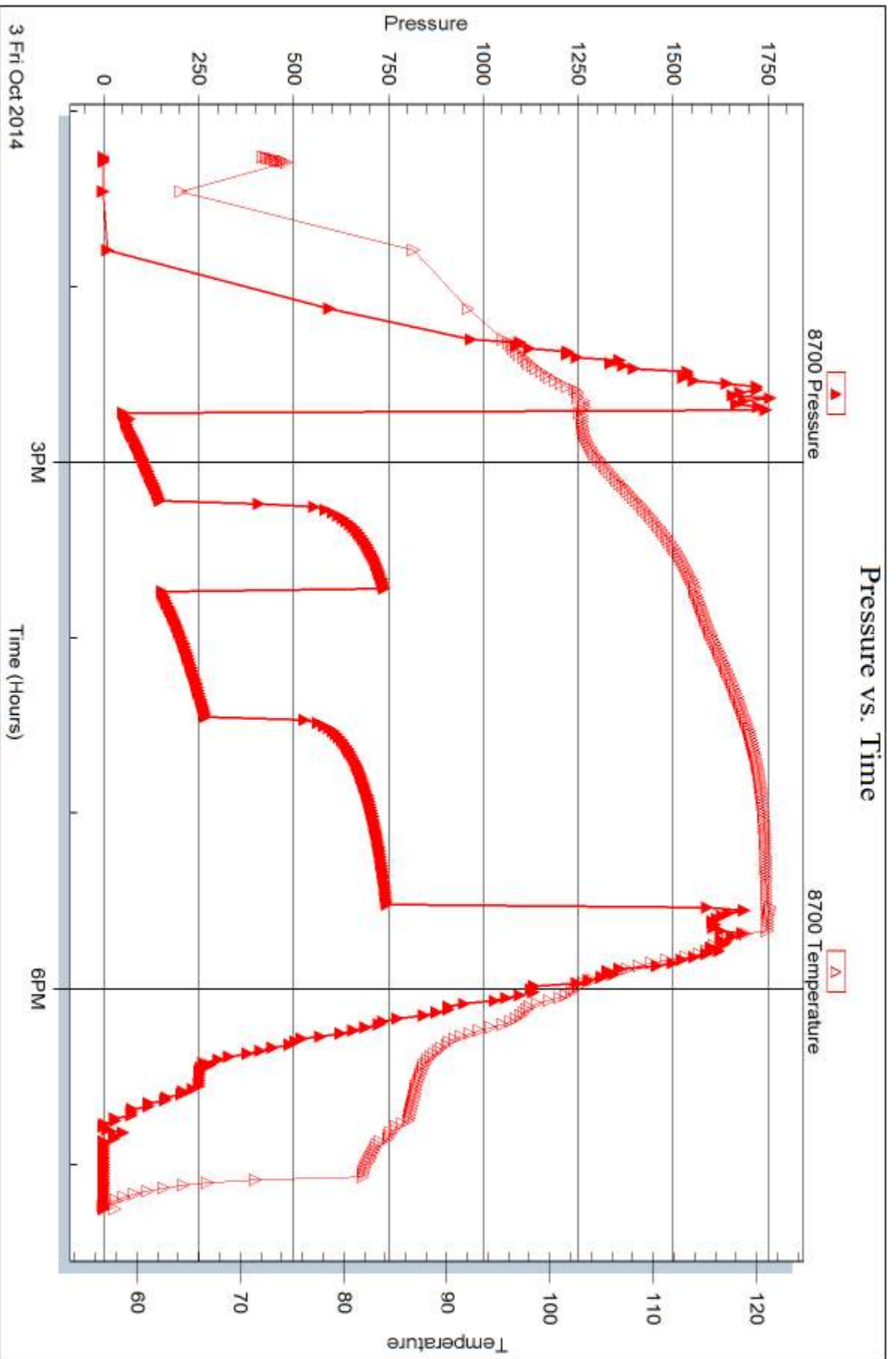
Serial #:

Laboratory Name:

Laboratory Location:

Recovery Comments: RW .12 @ 65F







DRILL STEM TEST REPORT

Prepared For: **Charter Energy Inc**

PO Box 252
Great Bend KS 67530-0250

ATTN: Steve Baize

Johnston #2

24-13s-20w Ellis,KS

Start Date: 2014.10.04 @ 08:25:44

End Date: 2014.10.04 @ 14:48:38

Job Ticket #: 60886 DST #: 3

Trilobite Testing, Inc
1515 Commerce Parkway Hays, KS 67601
ph: 785-625-4778 fax: 785-625-5620

Printed: 2014.10.07 @ 15:43:48



TRILOBITE TESTING, INC

DRILL STEM TEST REPORT

Charter Energy Inc
 PO Box 252
 Great Bend KS 67530-0250
 ATTN: Steve Baize

24-13s-20w Ellis,KS
Johnston #2
 Job Ticket: 60886 **DST#: 3**
 Test Start: 2014.10.04 @ 08:25:44

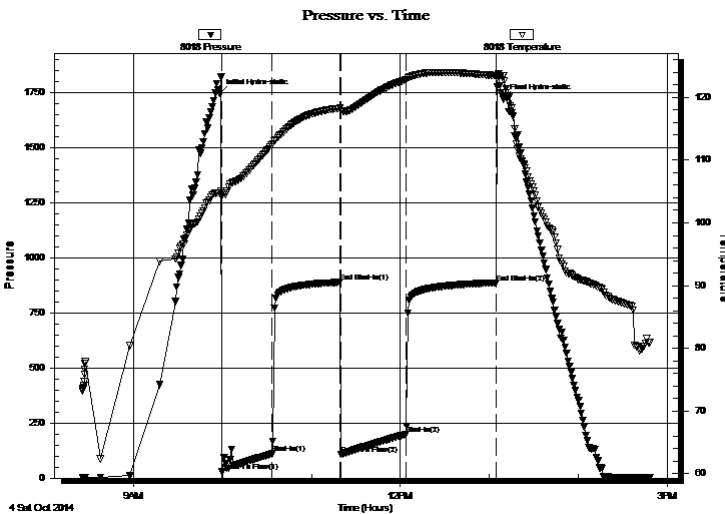
GENERAL INFORMATION:

Formation: **LKC H-K**
 Deviated: No Whipstock: ft (KB)
 Time Tool Opened: 09:59:39
 Time Test Ended: 14:48:38
 Interval: **3600.00 ft (KB) To 3660.00 ft (KB) (TVD)**
 Total Depth: 3660.00 ft (KB) (TVD)
 Hole Diameter: 7.85 inches Hole Condition: Fair
 Test Type: Conventional Bottom Hole (Reset)
 Tester: Ray Schwager
 Unit No: 70
 Reference Elevations: 2116.00 ft (KB)
 2111.00 ft (CF)
 KB to GR/CF: 5.00 ft

Serial #: 8018 Inside
 Press@RunDepth: 198.57 psig @ 3604.00 ft (KB) Capacity: 8000.00 psig
 Start Date: 2014.10.04 End Date: 2014.10.04 Last Calib.: 2014.10.04
 Start Time: 08:25:44 End Time: 14:48:38 Time On Btm: 2014.10.04 @ 09:58:09
 Time Off Btm: 2014.10.04 @ 13:09:38

TEST COMMENT: 30-IFP-w k to strg in 25 min
 45-ISIP-no bl bk
 45-FFP-w k to strg in 40 min
 60-FSIP-no bl bk

PRESSURE SUMMARY



Time (Min.)	Pressure (psig)	Temp (deg F)	Annotation
0	1743.19	104.83	Initial Hydro-static
2	28.89	104.21	Open To Flow (1)
36	110.36	112.48	Shut-In(1)
81	888.64	118.29	End Shut-In(1)
82	109.28	117.93	Open To Flow (2)
126	198.57	122.84	Shut-In(2)
187	886.61	123.46	End Shut-In(2)
192	1719.79	123.41	Final Hydro-static

Recovery

Length (ft)	Description	Volume (bbl)
60.00	MW 30%M70%W w /show of oil	0.84
310.00	Water	4.35

* Recovery from multiple tests

Gas Rates

Choke (inches)	Pressure (psig)	Gas Rate (Mcf/d)



**TRILOBITE
TESTING, INC**

DRILL STEM TEST REPORT

TOOL DIAGRAM

Charter Energy Inc
 PO Box 252
 Great Bend KS 67530-0250
 ATTN: Steve Baize

24-13s-20w Ellis,KS
Johnston #2
 Job Ticket: 60886 **DST#: 3**
 Test Start: 2014.10.04 @ 08:25:44

Tool Information

Drill Pipe:	Length: 3595.00 ft	Diameter: 3.80 inches	Volume: 50.43 bbl	Tool Weight: 2200.00 lb
Heavy Wt. Pipe:	Length: 0.00 ft	Diameter: 0.00 inches	Volume: 0.00 bbl	Weight set on Packer: 25000.00 lb
Drill Collar:	Length: 0.00 ft	Diameter: 0.00 inches	Volume: 0.00 bbl	Weight to Pull Loose: 65000.00 lb
			<u>Total Volume: 50.43 bbl</u>	Tool Chased 0.00 ft
Drill Pipe Above KB:	16.00 ft			String Weight: Initial 52000.00 lb
Depth to Top Packer:	3600.00 ft			Final 56000.00 lb
Depth to Bottom Packer:	ft			
Interval between Packers:	60.00 ft			
Tool Length:	81.00 ft			
Number of Packers:	2	Diameter: 6.75 inches		

Tool Comments:

Tool Description	Length (ft)	Serial No.	Position	Depth (ft)	Accum. Lengths
Change Over Sub	1.00			3580.00	
Shut In Tool	5.00			3585.00	
Hydraulic tool	5.00			3590.00	
Packer	5.00			3595.00	21.00 Bottom Of Top Packer
Packer	5.00			3600.00	
Stubb	1.00			3601.00	
Perforations	3.00			3604.00	
Recorder	0.00	8018	Inside	3604.00	
Recorder	0.00	8700	Outside	3604.00	
Blank Spacing	33.00			3637.00	
Perforations	20.00			3657.00	
Bullnose	3.00			3660.00	60.00 Bottom Packers & Anchor

Total Tool Length: 81.00



**TRILOBITE
TESTING, INC**

DRILL STEM TEST REPORT

FLUID SUMMARY

Charter Energy Inc

24-13s-20w Ellis,KS

PO Box 252
Great Bend KS 67530-0250

Johnston #2

Job Ticket: 60886

DST#: 3

ATTN: Steve Baize

Test Start: 2014.10.04 @ 08:25:44

Mud and Cushion Information

Mud Type: Gel Chem

Cushion Type:

Oil API:

deg API

Mud Weight: 9.00 lb/gal

Cushion Length:

ft

Water Salinity:

85000 ppm

Viscosity: 55.00 sec/qt

Cushion Volume:

bbbl

Water Loss: 7.76 in³

Gas Cushion Type:

Resistivity: ohm.m

Gas Cushion Pressure:

psig

Salinity: 3800.00 ppm

Filter Cake: 1.00 inches

Recovery Information

Recovery Table

Length ft	Description	Volume bbl
60.00	MW 30%M70%W w/show of oil	0.842
310.00	Water	4.348

Total Length: 370.00 ft Total Volume: 5.190 bbl

Num Fluid Samples: 0

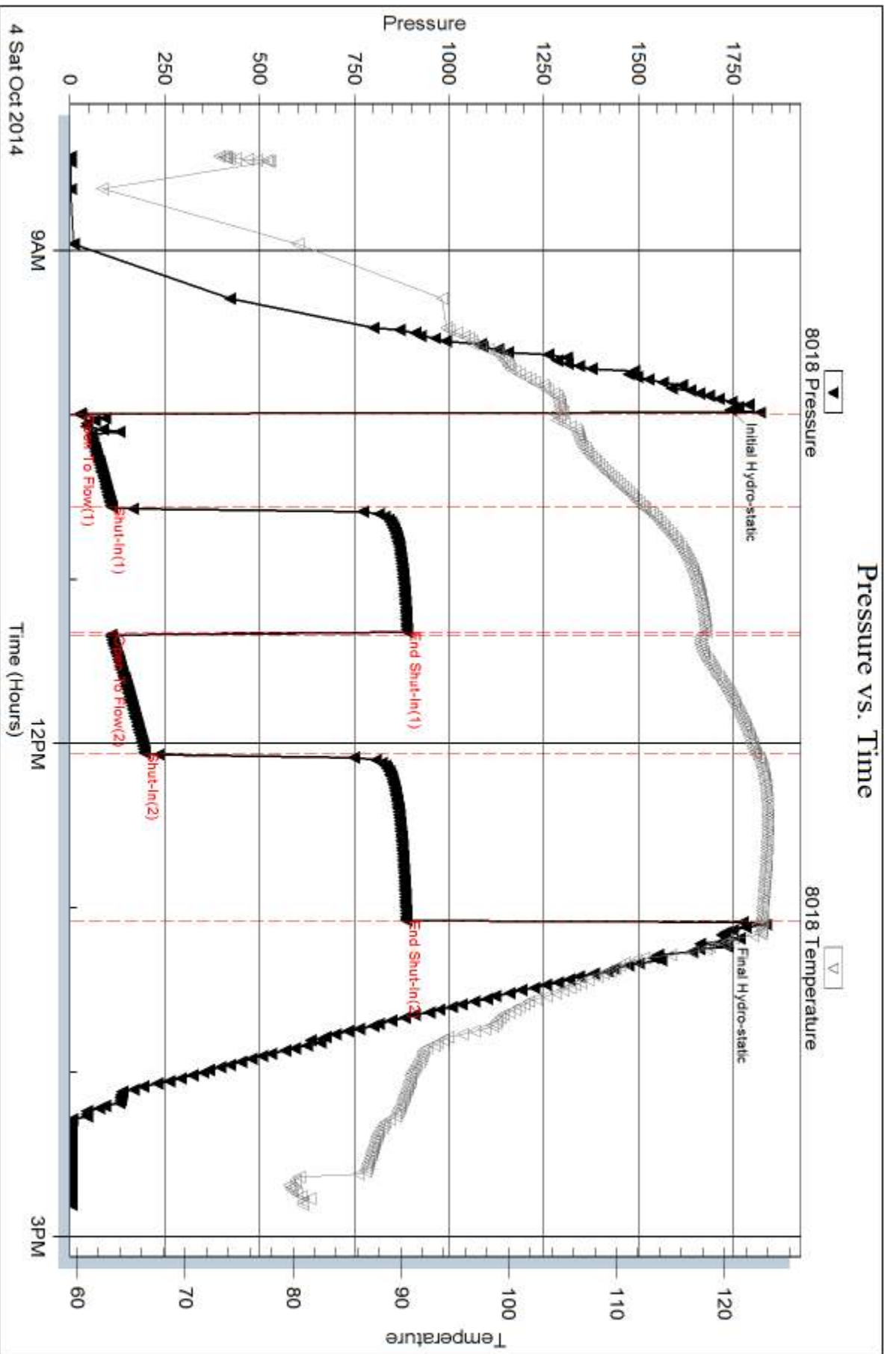
Num Gas Bombs: 0

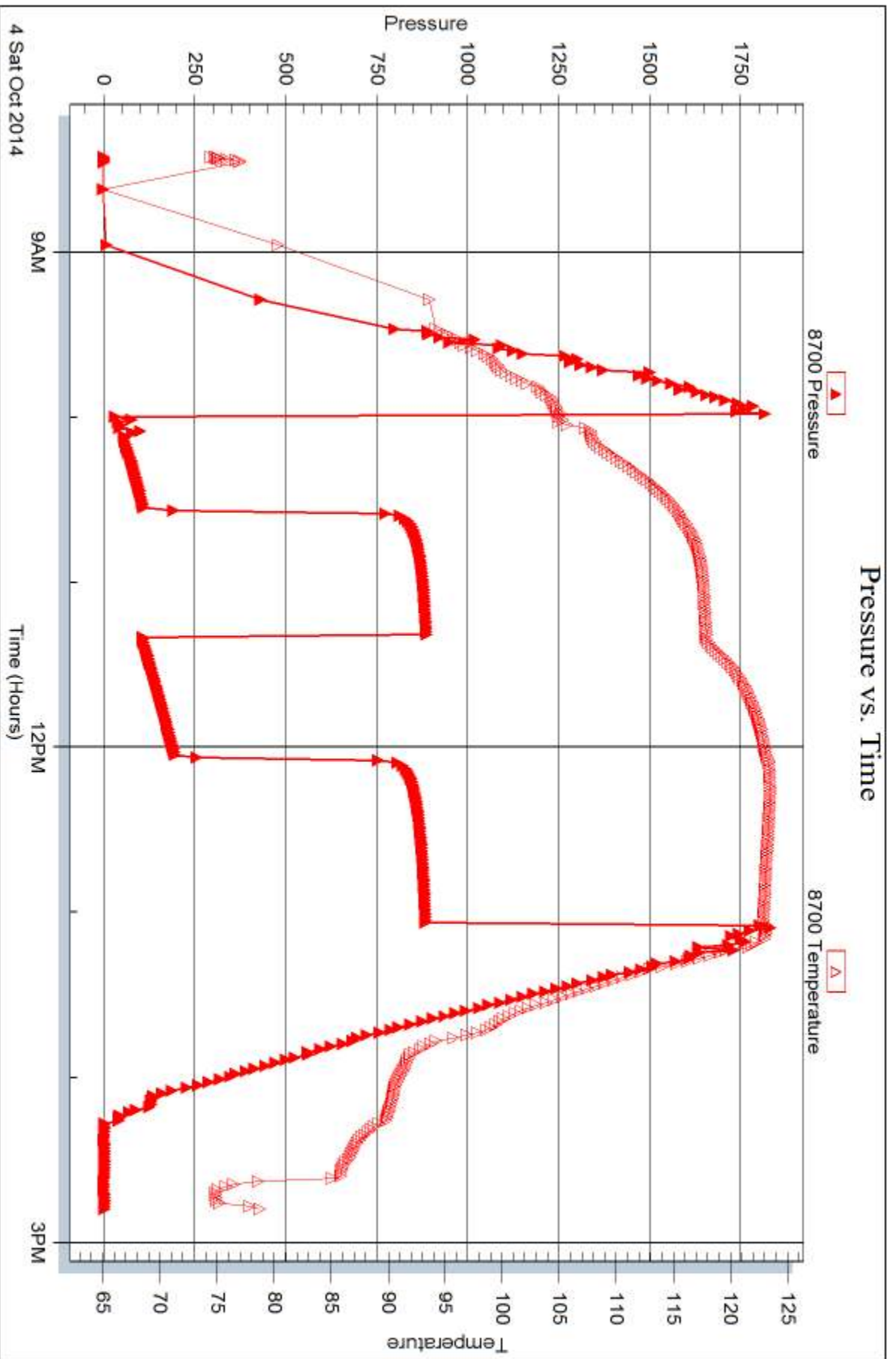
Serial #:

Laboratory Name:

Laboratory Location:

Recovery Comments: RW ..09@70F







DRILL STEM TEST REPORT

Prepared For: **Charter Energy Inc**

PO Box 252
Great Bend KS 67530-0250

ATTN: Steve Baize

Johnston #2

24-13s-20w Ellis,KS

Start Date: 2014.10.05 @ 09:10:32

End Date: 2014.10.05 @ 15:37:26

Job Ticket #: 60887 DST #: 4

Trilobite Testing, Inc
1515 Commerce Parkway Hays, KS 67601
ph: 785-625-4778 fax: 785-625-5620

Printed: 2014.10.07 @ 15:43:14



TRILOBITE TESTING, INC

DRILL STEM TEST REPORT

Charter Energy Inc
 PO Box 252
 Great Bend KS 67530-0250
 ATTN: Steve Baize

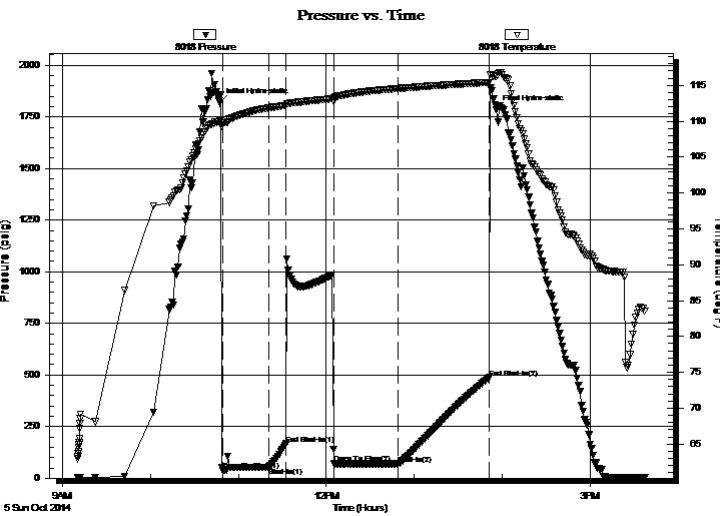
24-13s-20w Ellis,KS
Johnston #2
 Job Ticket: 60887 **DST#: 4**
 Test Start: 2014.10.05 @ 09:10:32

GENERAL INFORMATION:

Formation: **Arbuckle**
 Deviated: No Whipstock: ft (KB)
 Test Type: Conventional Bottom Hole (Reset)
 Time Tool Opened: 10:49:27 Tester: Ray Schwager
 Time Test Ended: 15:37:26 Unit No: 70
 Interval: **3700.00 ft (KB) To 3792.00 ft (KB) (TVD)** Reference Elevations: 2116.00 ft (KB)
 Total Depth: 3792.00 ft (KB) (TVD) 2111.00 ft (CF)
 Hole Diameter: 7.85 inches Hole Condition: Fair KB to GR/CF: 5.00 ft

Serial #: 8018 Inside
 Press@RunDepth: 68.91 psig @ 3704.00 ft (KB) Capacity: 8000.00 psig
 Start Date: 2014.10.05 End Date: 2014.10.05 Last Calib.: 2014.10.05
 Start Time: 09:10:32 End Time: 15:37:26 Time On Btm: 2014.10.05 @ 10:47:27
 Time Off Btm: 2014.10.05 @ 13:55:56

TEST COMMENT: 30-IFP-w k to a fr bl 1/2" to 4" bl
 45-ISIP-no bl
 45-FFP-w k bl thru-out 1/2" to 2 1/2" bl
 60-FSIP-no bl



PRESSURE SUMMARY

Time (Min.)	Pressure (psig)	Temp (deg F)	Annotation
0	1817.37	110.00	Initial Hydro-static
2	37.26	109.78	Open To Flow (1)
33	51.81	111.85	Shut-In(1)
45	166.12	112.22	End Shut-In(1)
78	69.36	113.31	Open To Flow (2)
122	68.91	114.55	Shut-In(2)
184	486.46	115.43	End Shut-In(2)
189	1784.01	116.25	Final Hydro-static

Recovery

Length (ft)	Description	Volume (bbl)
90.00	WM 25%W75%M	1.26

* Recovery from multiple tests

Gas Rates

Choke (inches)	Pressure (psig)	Gas Rate (Mcf/d)



**TRILOBITE
TESTING, INC**

DRILL STEM TEST REPORT

TOOL DIAGRAM

Charter Energy Inc
 PO Box 252
 Great Bend KS 67530-0250
 ATTN: Steve Baize

24-13s-20w Ellis,KS
Johnston #2
 Job Ticket: 60887 **DST#: 4**
 Test Start: 2014.10.05 @ 09:10:32

Tool Information

Drill Pipe:	Length: 3705.00 ft	Diameter: 3.80 inches	Volume: 51.97 bbl	Tool Weight: 2200.00 lb
Heavy Wt. Pipe:	Length: 0.00 ft	Diameter: 0.00 inches	Volume: 0.00 bbl	Weight set on Packer: 25000.00 lb
Drill Collar:	Length: 0.00 ft	Diameter: 0.00 inches	Volume: 0.00 bbl	Weight to Pull Loose: 65000.00 lb
			<u>Total Volume: 51.97 bbl</u>	Tool Chased 0.00 ft
Drill Pipe Above KB:	26.00 ft			String Weight: Initial 55000.00 lb
Depth to Top Packer:	3700.00 ft			Final 56000.00 lb
Depth to Bottom Packer:	ft			
Interval between Packers:	92.00 ft			
Tool Length:	113.00 ft			
Number of Packers:	2	Diameter: 6.75 inches		

Tool Comments:

Tool Description

Length (ft) Serial No. Position Depth (ft) Accum. Lengths

Tool Description	Length (ft)	Serial No.	Position	Depth (ft)	Accum. Lengths
Change Over Sub	1.00			3680.00	
Shut In Tool	5.00			3685.00	
Hydraulic tool	5.00			3690.00	
Packer	5.00			3695.00	21.00 Bottom Of Top Packer
Packer	5.00			3700.00	
Stubb	1.00			3701.00	
Perforations	3.00			3704.00	
Recorder	0.00	8018	Inside	3704.00	
Recorder	0.00	8700	Outside	3704.00	
Blank Spacing	65.00			3769.00	
Perforations	20.00			3789.00	
Bullnose	3.00			3792.00	92.00 Bottom Packers & Anchor

Total Tool Length: 113.00



**TRILOBITE
TESTING, INC**

DRILL STEM TEST REPORT

FLUID SUMMARY

Charter Energy Inc

24-13s-20w Ellis,KS

PO Box 252
Great Bend KS 67530-0250

Johnston #2

Job Ticket: 60887

DST#: 4

ATTN: Steve Baize

Test Start: 2014.10.05 @ 09:10:32

Mud and Cushion Information

Mud Type: Gel Chem

Cushion Type:

Oil API:

deg API

Mud Weight: 9.00 lb/gal

Cushion Length:

ft

Water Salinity:

23000 ppm

Viscosity: 52.00 sec/qt

Cushion Volume:

bbbl

Water Loss: 7.48 in³

Gas Cushion Type:

Resistivity: ohm.m

Gas Cushion Pressure:

psig

Salinity: 3800.00 ppm

Filter Cake: 1.00 inches

Recovery Information

Recovery Table

Length ft	Description	Volume bbl
90.00	WM 25%W75%M	1.262

Total Length: 90.00 ft Total Volume: 1.262 bbl

Num Fluid Samples: 0

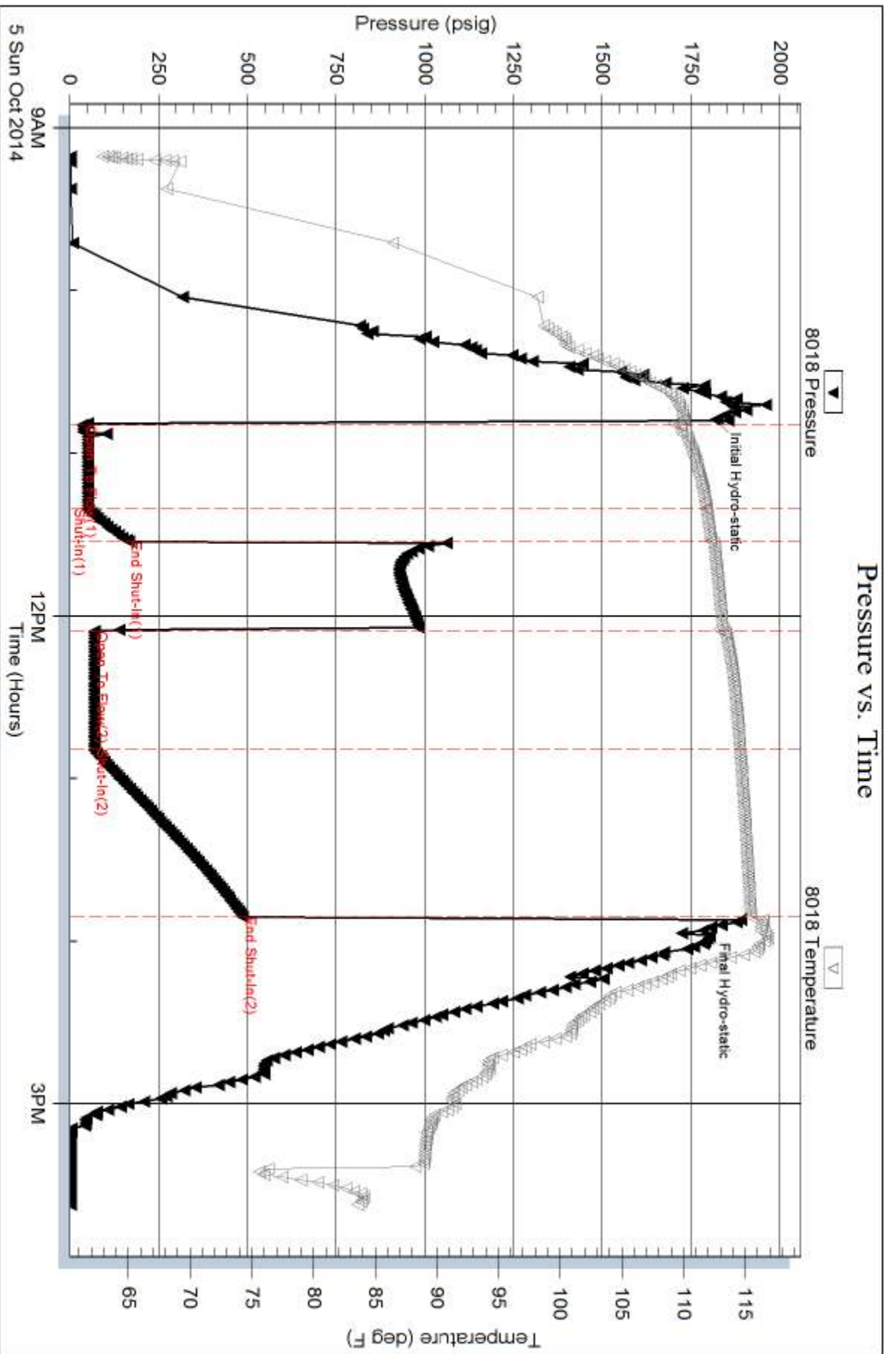
Num Gas Bombs: 0

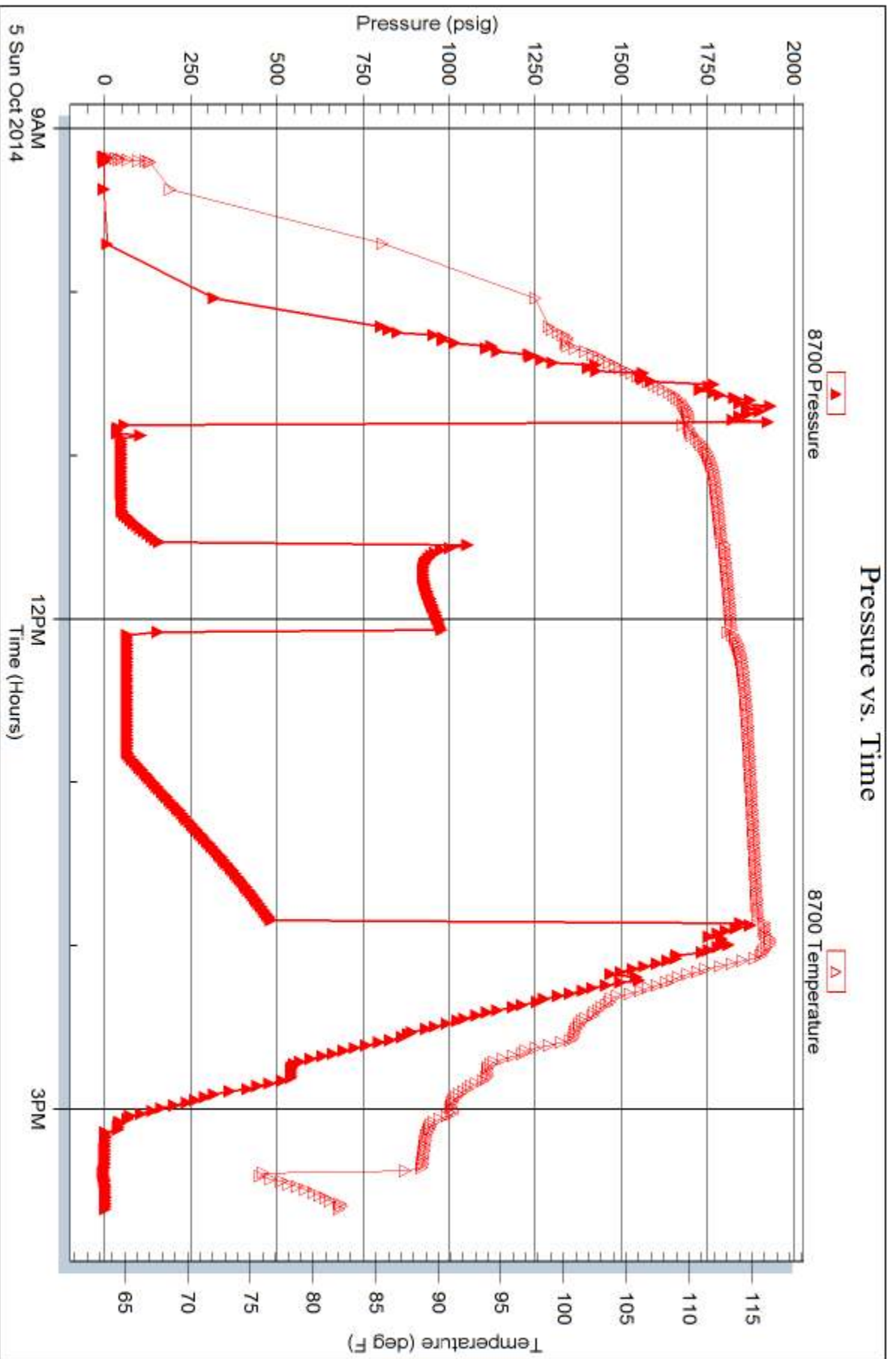
Serial #:

Laboratory Name:

Laboratory Location:

Recovery Comments: RW .4@ 55F







TRILOBITE TESTING INC.

1515 Commerce Parkway • Hays, Kansas 67601

Test Ticket

NO. 60884

Well Name & No. Johnston #2 Test No. 1 Date 10-2-14
 Company CHARTER Energy, Inc Elevation 2116 KB 2111 GL
 Address PO Box 252 GREAT Bend, Ks 67530-0250
 Co. Rep / Geo. Kurt TALHATT Rig Royalrig1
 Location: Sec. 24 Twp. 13^s Rge. 20^w Co. Ellis State Ks

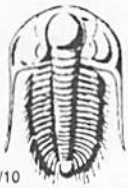
Interval Tested 3444-3500 Zone Tested LKC A-0
 Anchor Length 56 Drill Pipe Run 3453 Mud Wt. 9.1
 Top Packer Depth 3439 Drill Collars Run - Vis 49
 Bottom Packer Depth 3444 Wt. Pipe Run - WL 7.8
 Total Depth 3500 Chlorides 1600 ppm System LCM 1#
 Blow Description IFP-WEAK Blow thru-out 1/2" to 2 1/2" Blow
ISIP-NO Blow
FFA-WEAK Blow thru-out- 1/4" Blow
FSIP-NO Blow

Rec	Feet of	%gas	%oil	%water	%mud
<u>90</u>	<u>WM</u>		<u>40</u>	<u>60</u>	
Rec	Feet of	%gas	%oil	%water	%mud
Rec	Feet of	%gas	%oil	%water	%mud
Rec	Feet of	%gas	%oil	%water	%mud

Rec Total 90 BHT 112 Gravity - API RW .15 @ 65 ° F Chlorides 54000 ppm
 Test 1150 T-On Location 2925
 (A) Initial Hydrostatic 1658 Jars _____ T-Started 2315
 (B) First Initial Flow 18 Safety Joint _____ T-Open 0055
 (C) First Final Flow 52 Circ Sub _____ T-Pulled 0255
 (D) Initial Shut-In 785 Hourly Standby _____ T-Out 0459
 (E) Second Initial Flow 47 Mileage 32 RT 49.60 Comments _____
 (F) Second Final Flow 64 Sampler _____
 (G) Final Shut-In 777 Straddle _____
 (H) Final Hydrostatic 1624 Shale Packer _____
 Shale Packer _____
 Extra Packer _____
 Extra Recorder _____
 Day Standby _____
 Accessibility _____
 Initial Open 30
 Initial Shut-In 30
 Final Flow 30
 Final Shut-In 30
 Sub Total 0
 Total 1199.60
 Sub Total 1199.60 MP/DST Disc't _____

Approved By _____ Our Representative RAY Schwager Thank you

Trilobite Testing Inc. shall not be liable for damaged of any kind of the property or personnel of the one for whom a test is made, or for any loss suffered or sustained, directly or indirectly, through the use of its equipment, or its statements or opinion concerning the results of any test, tools lost or damaged in the hole shall be paid for at cost by the party for whom the test is made.



TRILOBITE TESTING INC.

1515 Commerce Parkway • Hays, Kansas 67601

Test Ticket

NO. 60885

Well Name & No. Johnston #2 Test No. 2 Date 10-3-14
 Company CHARTER Energy, Inc Elevation 2116 KB 2111 GL
 Address PO Box 252 GREAT Bend, Ks 67530-0250
 Co. Rep / Geo. KURT TALBATT Rig Royal rig 1
 Location: Sec. 24 Twp. 13^s Rge. 20^w Co. ELLIS State Ks

Interval Tested 3500-3545 Zone Tested LKC
 Anchor Length 45 Drill Pipe Run 3485 Mud Wt. 9.1
 Top Packer Depth 3495 Drill Collars Run - Vis 57
 Bottom Packer Depth 3500 Wt. Pipe Run - WL 8
 Total Depth 3545 Chlorides 4000 ppm System LCM 1#

Blow Description IFP - STRONG Blow IN 9 min
TSIP - surface Blow BACK
FFP - WEAK TO STRONG IN 17 min
FSIP - NO Blow

Rec	Feet of	%gas	%oil	%water	%mud
<u>80</u>	<u>MLW</u>		<u>60</u>	<u>40</u>	
<u>435</u>	<u>WATER</u>				

Rec Total 515 BHT 121 Gravity - API RW. 12 @ 65 °F Chlorides 75000 ppm

(A) Initial Hydrostatic 1669 Test 1150 T-On Location 1235
 (B) First Initial Flow 48 Jars _____ T-Started 1315
 (C) First Final Flow 152 Safety Joint _____ T-Open 1445
 (D) Initial Shut-In 742 Circ Sub _____ T-Pulled 1730
 (E) Second Initial Flow 156 Hourly Standby _____ T-Out 1915
 (F) Second Final Flow 271 Mileage 32 RT 49.60 Comments _____
 (G) Final Shut-In 749 Sampler _____
 (H) Final Hydrostatic 1607 Straddle _____

Initial Open 30 Shale Packer _____ Ruined Shale Packer _____
 Initial Shut-In 30 Extra Packer _____ Ruined Packer _____
 Final Flow 45 Extra Recorder _____ Sub Total 0
 Final Shut-In 60 Day Standby _____ Total 1199.60
 Accessibility _____ MP/DST Disc't _____
 Sub Total 1199.60

Approved By _____ Our Representative RAY SCHWAGG Thank you

Trilobite Testing Inc. shall not be liable for damaged of any kind of the property or personnel of the one for whom a test is made, or for any loss suffered or sustained, directly or indirectly, through the use of its equipment, or its statements or opinion concerning the results of any test, tools lost or damaged in the hole shall be paid for at cost by the party for whom the test is made.



TRILOBITE TESTING INC.

1515 Commerce Parkway • Hays, Kansas 67601

Test Ticket

NO. **60886**

4/10

Well Name & No. Johnston #2 Test No. 3 Date 10-4-14
 Company CHARTER Energy Inc Elevation 2116 KB 2111 GL
 Address PO Box 252 GREAT Bend, Ks 67530-0250
 Co. Rep / Geo. CLINT Musgrove Rig Royal rig 1
 Location: Sec. 24 Twp. 13^s Rge. 20^w Co. ELLIS State Ks

Interval Tested 3600-3660 Zone Tested LKC H-Ks
 Anchor Length 60 Drill Pipe Run 3595 Mud Wt. 9.2
 Top Packer Depth 3595 Drill Collars Run - Vis 55
 Bottom Packer Depth 3600 Wt. Pipe Run - WL 7.8
 Total Depth 3660 Chlorides 3800 ppm System LCM 2#

Blow Description IFP - WEAK TO STRONG IN 25 MIN
ISIP - NO BLOW
FFP - WEAK TO STRONG IN 40 MIN
FSIP - NO BLOW

Rec	Feet of	%gas	%oil	%water	%mud
<u>60</u>	<u>MW w/show of oil</u>		<u>70</u>	<u>30</u>	
<u>310</u>	<u>WATER</u>				

Rec Total 370 BHT 123 Gravity - API RW .09 @ 70 ° F Chlorides 85000 ppm

(A) Initial Hydrostatic 1743 Test 1150 T-On Location 0725
 (B) First Initial Flow 28 Jars _____ T-Started 0825
 (C) First Final Flow 110 Safety Joint _____ T-Open 1005
 (D) Initial Shut-In 888 Circ Sub _____ T-Pulled 1305
 (E) Second Initial Flow 109 Hourly Standby _____ T-Out 1448
 (F) Second Final Flow 198 Mileage 32 RT 49.60 Comments _____
 (G) Final Shut-In 886 Sampler _____
 (H) Final Hydrostatic 1719 Straddle _____ Ruined Shale Packer _____
 Shale Packer _____ Ruined Packer _____

Initial Open 30 Extra Packer _____ Extra Copies _____
 Initial Shut-In 45 Extra Recorder _____ Sub Total 0
 Final Flow 45 Day Standby _____ Total 1199.60
 Final Shut-In 60 Accessibility _____ MP/DST Disc't _____
 Sub Total 1199.60

Approved By _____ Our Representative Ray Schwager *Thank you*

Trilobite Testing Inc. shall not be liable for damaged of any kind of the property or personnel of the one for whom a test is made, or for any loss suffered or sustained, directly or indirectly, through the use of its equipment, or its statements or opinion concerning the results of any test, tools lost or damaged in the hole shall be paid for at cost by the party for whom the test is made.



TRILOBITE TESTING INC.

1515 Commerce Parkway • Hays, Kansas 67601

Test Ticket

NO. 60887

Well Name & No. Johnston #2 Test No. 4 Date 10-5-14
 Company CHAETER Energy Inc Elevation 2116 KB 2116 GL
 Address PO Box 252 Great Bend, Ks 67530-0250
 Co. Rep / Geo. CLINT Musgeoe Rig Royal rig 1
 Location: Sec. 24 Twp. 13^s Rge. 20^w Co. ELLIS State Ks

Interval Tested 3700-3792 Zone Tested Arbuckle
 Anchor Length 92 Drill Pipe Run 3705 Mud Wt. 9.3
 Top Packer Depth 3695 Drill Collars Run - Vis 52
 Bottom Packer Depth 3700 Wt. Pipe Run - WL 7.5
 Total Depth 3792 Chlorides 3800 ppm System LCM 1#

Blow Description IFP - WEAK TO A FAIR BLOW 1/2" TO 4" BLOW
ISTP - NO BLOW
FFP - WEAK BLOW THRU-OUT 1/2" TO 2 1/2" BLOW
FSTP - NO BLOW

Rec	Feet of	%gas	%oil	%water	%mud
<u>90</u>	<u>WM</u>		<u>25</u>	<u>75</u>	
	<u>w/slight show of oil</u>				

Rec Total 90 BHT 115 Gravity - API RW .4 @ 55 ° F Chlorides 23000 ppm

(A) Initial Hydrostatic Test 1150 T-On Location 0840
 (B) First Initial Flow Jars _____ T-Started 0910
 (C) First Final Flow Safety Joint _____ T-Open 1050
 (D) Initial Shut-In Circ Sub _____ T-Pulled 1350
 (E) Second Initial Flow Hourly Standby _____ T-Out 1537

(F) Second Final Flow Mileage 32RT 49.60
 (G) Final Shut-In Sampler _____ 49.60
 (H) Final Hydrostatic Straddle _____
 Shale Packer _____
 Extra Packer _____
 Extra Recorder _____
 Day Standby _____
 Accessibility _____

Initial Open 30
 Initial Shut-In 45
 Final Flow 45
 Final Shut-In 60

Comments Loaded Tool 10-5-14
2330
 Ruined Shale Packer _____
 Ruined Packer _____
 Extra Copies _____
 Sub Total 0
 Total 1249.20
 MP/DST Disc't _____

Sub Total 1249.20

Approved By _____ Our Representative RAY SCHWAGER Thank you

Trilobite Testing Inc. shall not be liable for damaged of any kind of the property or personnel of the one for whom a test is made, or for any loss suffered or sustained, directly or indirectly, through the use of its equipment, or its statements or opinion concerning the results of any test, tools lost or damaged in the hole shall be paid for at cost by the party for whom the test is made.