



DRILL STEM TEST REPORT

Prepared For: **John O Farmer Inc**

PO Box 352
Russell KS 67665-2635

ATTN: John O Farmer IV, Aust

Weigel Unit #1

36-8s-18w Rooks, KS

Start Date: 2014.11.12 @ 10:10:39

End Date: 2014.11.12 @ 16:47:33

Job Ticket #: 60898 DST #: 1

Trilobite Testing, Inc
1515 Commerce Parkway Hays, KS 67601
ph: 785-625-4778 fax: 785-625-5620

Printed: 2014.11.14 @ 11:57:35



**TRILOBITE
TESTING, INC**

DRILL STEM TEST REPORT

John O Farmer Inc
PO Box 352
Russell KS 67665-2635
ATTN: John O Farmer IV, Aust

36-8s-18w Rooks, KS
Weigel Unit #1
Job Ticket: 60898 **DST#: 1**
Test Start: 2014.11.12 @ 10:10:39

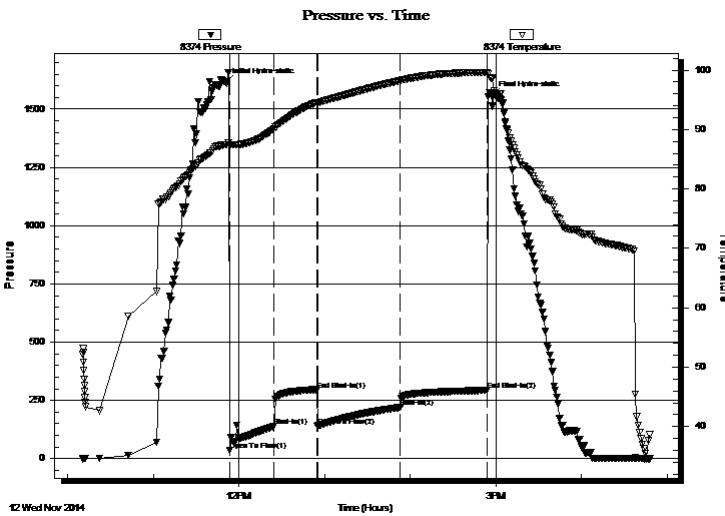
GENERAL INFORMATION:

Formation: **LKC H-K**
Deviated: No Whipstock: ft (KB)
Time Tool Opened: 11:53:34
Time Test Ended: 16:47:33
Interval: **3338.00 ft (KB) To 3416.00 ft (KB) (TVD)**
Total Depth: 3416.00 ft (KB) (TVD)
Hole Diameter: 7.85 inches Hole Condition: Fair
Test Type: Conventional Bottom Hole (Initial)
Tester: Ray Schwager
Unit No: 70
Reference Elevations: 2027.00 ft (KB)
2022.00 ft (CF)
KB to GR/CF: 5.00 ft

Serial #: 8374 **Inside**
Press@RunDepth: 220.64 psig @ 3351.00 ft (KB) Capacity: 8000.00 psig
Start Date: 2014.11.12 End Date: 2014.11.12 Last Calib.: 2014.11.12
Start Time: 10:10:39 End Time: 16:47:33 Time On Btm: 2014.11.12 @ 11:51:04
Time Off Btm: 2014.11.12 @ 14:57:03

TEST COMMENT: 30-IFP-w k to strg in 15 min
30-ISIP-no bl
60-FFP-w k to a gd bl 1/4" to 8 "bl
60-FSIP-no bl

PRESSURE SUMMARY



Time (Min.)	Pressure (psig)	Temp (deg F)	Annotation
0	1613.87	87.40	Initial Hydro-static
3	35.11	87.23	Open To Flow (1)
34	138.08	90.09	Shut-In(1)
64	295.08	94.56	End Shut-In(1)
64	139.97	94.50	Open To Flow (2)
122	220.64	98.25	Shut-In(2)
183	292.89	99.61	End Shut-In(2)
186	1556.61	98.65	Final Hydro-static

Recovery

Length (ft)	Description	Volume (bbl)
60.00	MW 25%M75%W w /show of oil	0.30
375.00	Water	4.71

Gas Rates

	Choke (inches)	Pressure (psig)	Gas Rate (Mcf/d)



**TRILOBITE
TESTING, INC**

DRILL STEM TEST REPORT

John O Farmer Inc
PO Box 352
Russell KS 67665-2635
ATTN: John O Farmer IV, Aust

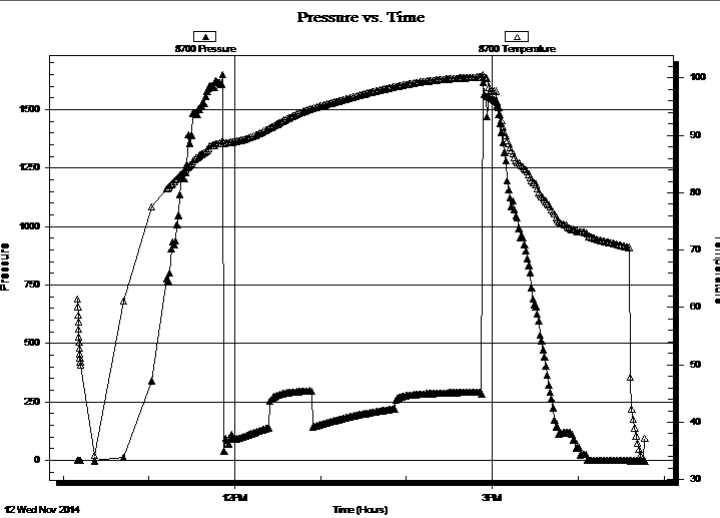
36-8s-18w Rooks, KS
Weigel Unit #1
Job Ticket: 60898 **DST#: 1**
Test Start: 2014.11.12 @ 10:10:39

GENERAL INFORMATION:

Formation: **LKC H-K**
Deviated: No Whipstock: ft (KB)
Time Tool Opened: 11:53:34
Time Test Ended: 16:47:33
Interval: **3338.00 ft (KB) To 3416.00 ft (KB) (TVD)**
Total Depth: 3416.00 ft (KB) (TVD)
Hole Diameter: 7.85 inches Hole Condition: Fair
Test Type: Conventional Bottom Hole (Initial)
Tester: Ray Schwager
Unit No: 70
Reference Elevations: 2027.00 ft (KB)
2022.00 ft (CF)
KB to GR/CF: 5.00 ft

Serial #: 8700 Outside
Press@RunDepth: psig @ 3351.00 ft (KB) Capacity: 8000.00 psig
Start Date: 2014.11.12 End Date: 2014.11.12 Last Calib.: 2014.11.12
Start Time: 10:10:08 End Time: 16:46:32 Time On Btm:
Time Off Btm:

TEST COMMENT: 30-IFP-w k to strg in 15 min
30-ISIP-no bl
60-FFP-w k to a gd bl 1/4" to 8 "bl
60-FSIP-no bl



PRESSURE SUMMARY			
Time (Min.)	Pressure (psig)	Temp (deg F)	Annotation

Recovery		
Length (ft)	Description	Volume (bbl)
60.00	MW 25%M75%W w /show of oil	0.30
375.00	Water	4.71

Gas Rates			
	Choke (inches)	Pressure (psig)	Gas Rate (Mcf/d)



**TRILOBITE
TESTING, INC**

DRILL STEM TEST REPORT

TOOL DIAGRAM

John O Farmer Inc

36-8s-18w Rooks,KS

PO Box 352
Russell KS 67665-2635

Weigel Unit #1

Job Ticket: 60898

DST#: 1

ATTN: John O FarmerIV,Aust

Test Start: 2014.11.12 @ 10:10:39

Tool Information

Drill Pipe:	Length: 3205.00 ft	Diameter: 3.80 inches	Volume: 44.96 bbl	Tool Weight:	2200.00 lb
Heavy Wt. Pipe:	Length: 0.00 ft	Diameter: 0.00 inches	Volume: 0.00 bbl	Weight set on Packer:	25000.00 lb
Drill Collar:	Length: 120.00 ft	Diameter: 2.25 inches	Volume: 0.59 bbl	Weight to Pull Loose:	45000.00 lb
			<u>Total Volume: 45.55 bbl</u>	Tool Chased	0.00 ft
Drill Pipe Above KB:	8.00 ft			String Weight: Initial	36000.00 lb
Depth to Top Packer:	3338.00 ft			Final	38000.00 lb
Depth to Bottom Packer:	ft				
Interval between Packers:	78.00 ft				
Tool Length:	99.00 ft				
Number of Packers:	2	Diameter: 6.75 inches			

Tool Comments:

Tool Description

Tool Description	Length (ft)	Serial No.	Position	Depth (ft)	Accum. Lengths
Change Over Sub	1.00			3318.00	
Shut In Tool	5.00			3323.00	
Hydraulic tool	5.00			3328.00	
Packer	5.00			3333.00	21.00 Bottom Of Top Packer
Packer	5.00			3338.00	
Stubb	1.00			3339.00	
Perforations	12.00			3351.00	
Recorder	0.00	8374	Inside	3351.00	
Recorder	0.00	8700	Outside	3351.00	
Blank Spacing	62.00			3413.00	
Bullnose	3.00			3416.00	78.00 Bottom Packers & Anchor

Total Tool Length: 99.00



**TRILOBITE
TESTING, INC**

DRILL STEM TEST REPORT

FLUID SUMMARY

John O Farmer Inc

36-8s-18w Rooks,KS

PO Box 352
Russell KS 67665-2635

Weigel Unit #1

Job Ticket: 60898

DST#: 1

ATTN: John O FarmerIV,Aust

Test Start: 2014.11.12 @ 10:10:39

Mud and Cushion Information

Mud Type: Gel Chem

Cushion Type:

Oil API:

deg API

Mud Weight: 9.00 lb/gal

Cushion Length:

ft

Water Salinity:

52000 ppm

Viscosity: 63.00 sec/qt

Cushion Volume:

bbbl

Water Loss: 7.91 in³

Gas Cushion Type:

Resistivity: ohm.m

Gas Cushion Pressure:

psig

Salinity: 2500.00 ppm

Filter Cake: 1.00 inches

Recovery Information

Recovery Table

Length ft	Description	Volume bbl
60.00	MW 25%M75%W w/show of oil	0.295
375.00	Water	4.714

Total Length: 435.00 ft Total Volume: 5.009 bbl

Num Fluid Samples: 0

Num Gas Bombs: 0

Serial #:

Laboratory Name:

Laboratory Location:

Recovery Comments: 10# LCM

RW .25@42F

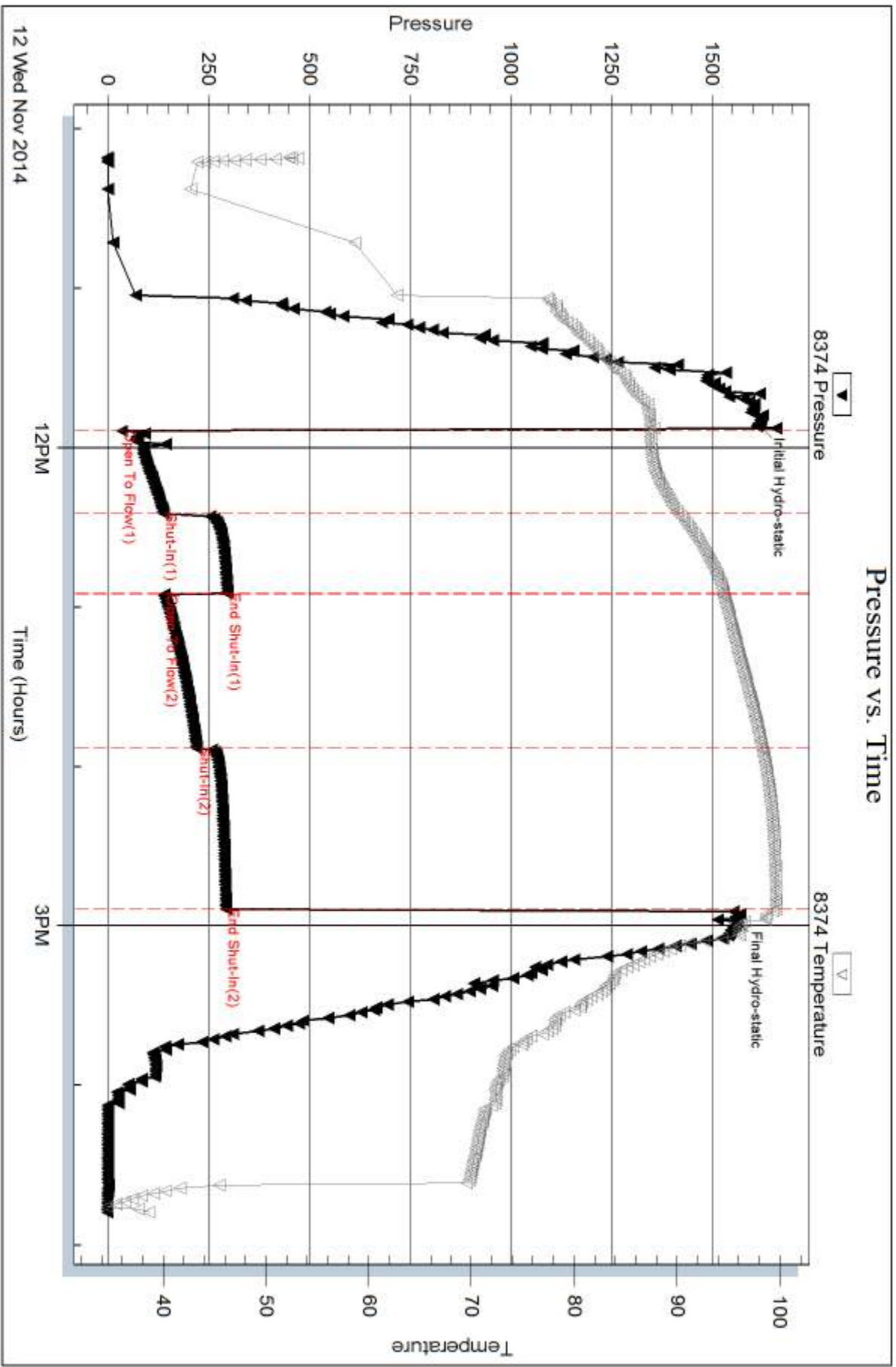
Serial #: 8374

Inside

John O Farmer Inc

Weigel Unit #1

DST Test Number: 1

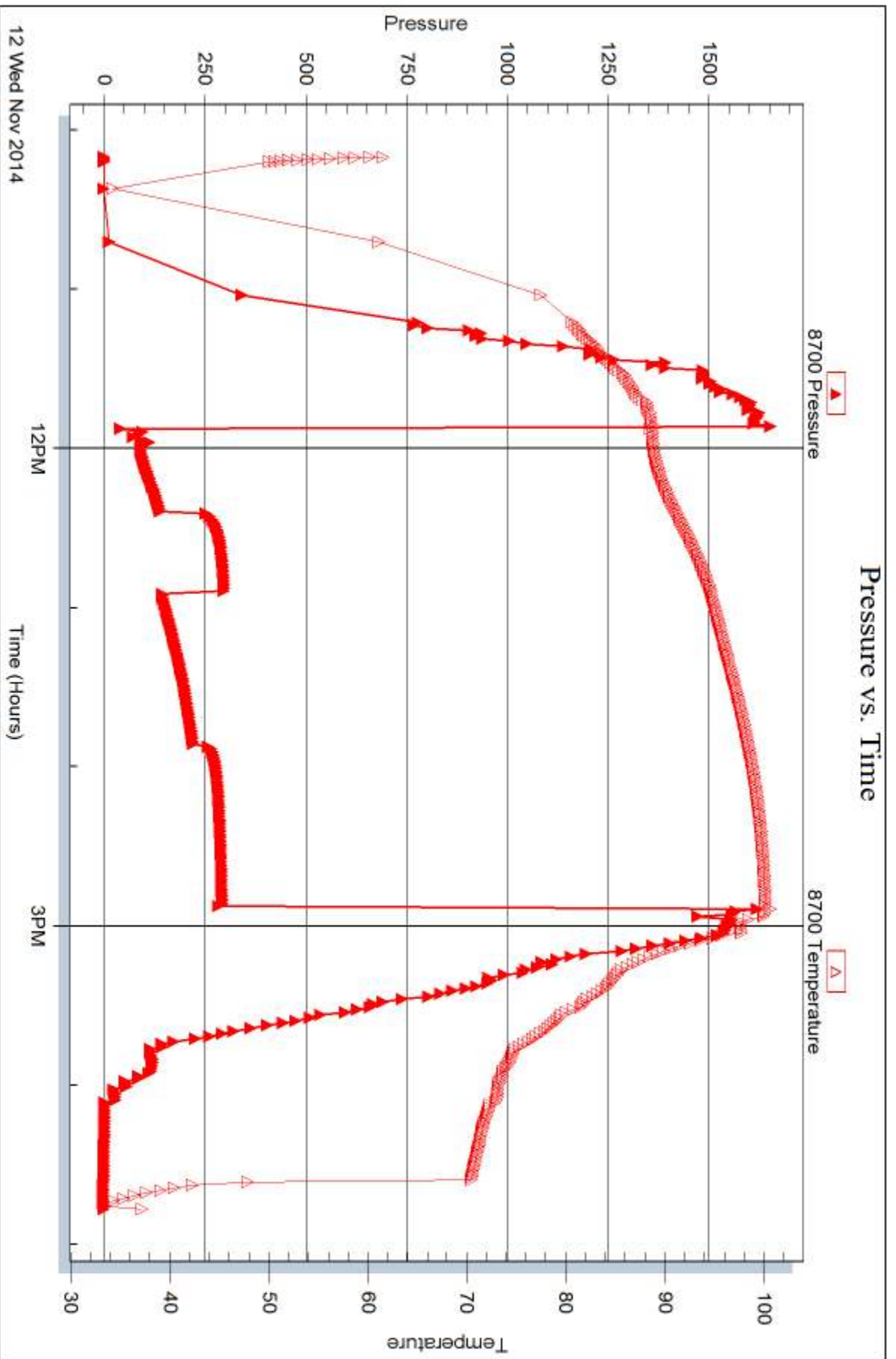


Serial #: 8700

Outside John O Farmer Inc

Weigel Unit #1

DST Test Number: 1



Trilobite Testing, Inc

Ref. No: 60898

Printed: 2014.11.14 @ 11:57:36



DRILL STEM TEST REPORT

Prepared For: **John O Farmer Inc**

PO Box 352
Russell KS 67665-2635

ATTN: John O FarmerIV,Aust

Weigel Unit #1

36-8s-18w Rooks,KS

Start Date: 2014.11.13 @ 07:40:12

End Date: 2014.11.13 @ 13:01:42

Job Ticket #: 60899 DST #: 2

Trilobite Testing, Inc
1515 Commerce Parkway Hays, KS 67601
ph: 785-625-4778 fax: 785-625-5620

Printed: 2014.11.14 @ 11:57:12

John O Farmer Inc
36-8s-18w Rooks,KS
Weigel Unit #1
DST # 2
Arbuckle
2014.11.13



TRILOBITE TESTING, INC

DRILL STEM TEST REPORT

John O Farmer Inc
 PO Box 352
 Russell KS 67665-2635
 ATTN: John O Farmer IV, Aust

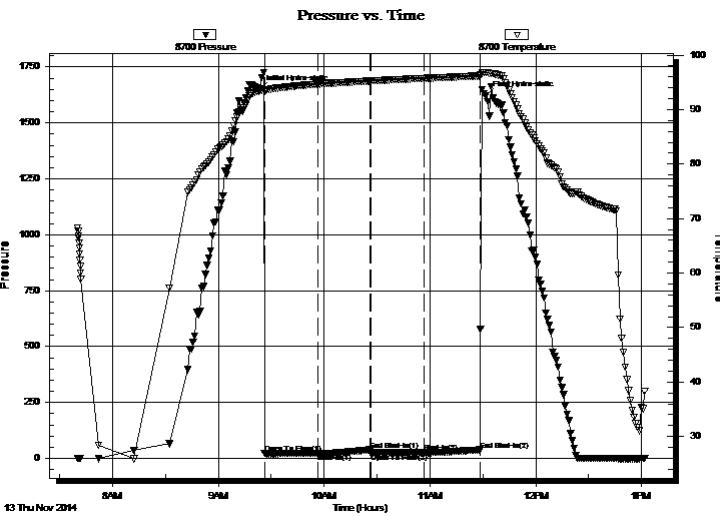
36-8s-18w Rooks, KS
Weigel Unit #1
 Job Ticket: 60899 **DST#: 2**
 Test Start: 2014.11.13 @ 07:40:12

GENERAL INFORMATION:

Formation: **Arbuckle**
 Deviated: No Whipstock: ft (KB)
 Time Tool Opened: 09:26:12
 Time Test Ended: 13:01:42
 Interval: **3417.00 ft (KB) To 3462.00 ft (KB) (TVD)**
 Total Depth: 3540.00 ft (KB) (TVD)
 Hole Diameter: 7.85 inches Hole Condition: Fair
 Test Type: Conventional Straddle (Reset)
 Tester: Ray Schwager
 Unit No: 70
 Reference Elevations: 2027.00 ft (KB)
 2022.00 ft (CF)
 KB to GR/CF: 5.00 ft

Serial #: 8700 Outside
 Press@RunDepth: 25.07 psig @ 3421.00 ft (KB) Capacity: 8000.00 psig
 Start Date: 2014.11.13 End Date: 2014.11.13 Last Calib.: 2014.11.13
 Start Time: 07:40:17 End Time: 13:01:41 Time On Btm: 2014.11.13 @ 09:23:42
 Time Off Btm: 2014.11.13 @ 11:31:42

TEST COMMENT: 30-IFP-w k bl thru-out 1/4" to 1/2" bl
 30-ISIP-no bl
 30-FFP-no bl
 30-FSIP-no bl



PRESSURE SUMMARY

Time (Min.)	Pressure (psig)	Temp (deg F)	Annotation
0	1651.01	93.43	Initial Hydro-static
3	21.60	93.37	Open To Flow (1)
33	22.01	94.66	Shut-In(1)
63	38.17	95.24	End Shut-In(1)
63	23.00	95.24	Open To Flow (2)
93	25.07	95.72	Shut-In(2)
125	37.69	96.17	End Shut-In(2)
128	1623.58	96.81	Final Hydro-static

Recovery

Length (ft)	Description	Volume (bbl)
20.00	Mud	0.10

* Recovery from multiple tests

Gas Rates

Choke (inches)	Pressure (psig)	Gas Rate (Mcf/d)



TRILLOBITE
TESTING, INC

DRILL STEM TEST REPORT

John O Farmer Inc
PO Box 352
Russell KS 67665-2635
ATTN: John O FarmerIV,Aust

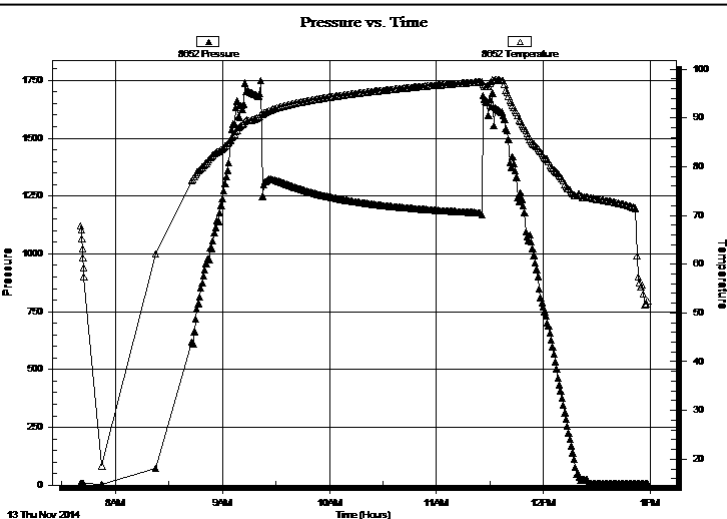
36-8s-18w Rooks,KS
Weigel Unit #1
Job Ticket: 60899 **DST#: 2**
Test Start: 2014.11.13 @ 07:40:12

GENERAL INFORMATION:

Formation:	Arbuckle			Test Type:	Conventional Straddle (Reset)
Deviated:	No Whipstock:	ft (KB)		Tester:	Ray Schwager
Time Tool Opened:	09:26:12			Unit No:	70
Time Test Ended:	13:01:42			Reference Elevations:	2027.00 ft (KB)
Interval:	3417.00 ft (KB) To 3462.00 ft (KB) (TVD)				2022.00 ft (CF)
Total Depth:	3540.00 ft (KB) (TVD)			KB to GR/CF:	5.00 ft
Hole Diameter:	7.85 inches	Hole Condition:	Fair		

Serial #: 8652	Below (Straddle)				
Press@RunDepth:	psig @ 3478.00 ft (KB)	Capacity:	8000.00 psig		
Start Date:	2014.11.13	End Date:	2014.11.13	Last Calib.:	2014.11.13
Start Time:	07:40:29	End Time:	12:58:23	Time On Btm:	
				Time Off Btm:	

TEST COMMENT: 30-IFP-w k bl thru-out 1/4" to 1/2" bl
 30-ISIP-no bl
 30-FFP-no bl
 30-FSIP-no bl



PRESSURE SUMMARY

Time (Min.)	Pressure (psig)	Temp (deg F)	Annotation

Recovery

Length (ft)	Description	Volume (bbl)
20.00	Mud	0.10

Gas Rates

Choke (inches)	Pressure (psig)	Gas Rate (Mcf/d)

* Recovery from multiple tests



TRILOBITE TESTING, INC.

DRILL STEM TEST REPORT

John O Farmer Inc
 PO Box 352
 Russell KS 67665-2635
 ATTN: John O Farmer IV, Aust

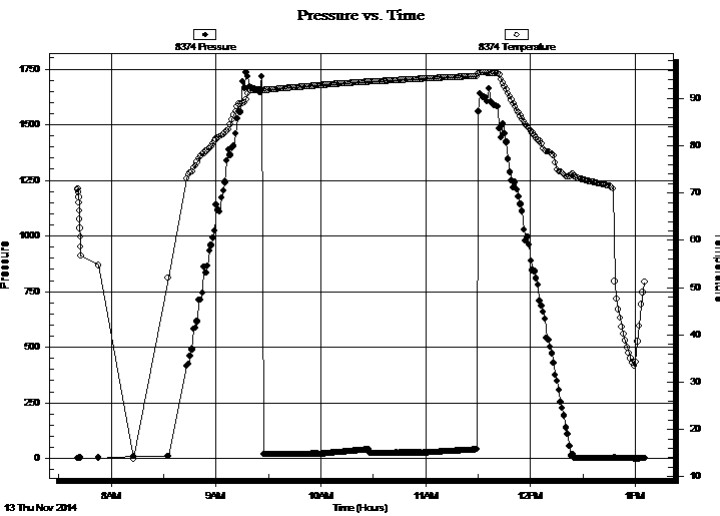
36-8s-18w Rooks, KS
Weigel Unit #1
 Job Ticket: 60899 **DST#: 2**
 Test Start: 2014.11.13 @ 07:40:12

GENERAL INFORMATION:

Formation: **Arbuckle**
 Deviated: No Whipstock: ft (KB)
 Time Tool Opened: 09:26:12
 Time Test Ended: 13:01:42
Interval: 3417.00 ft (KB) To 3462.00 ft (KB) (TVD)
 Total Depth: 3540.00 ft (KB) (TVD)
 Hole Diameter: 7.85 inches Hole Condition: Fair
 Test Type: Conventional Straddle (Reset)
 Tester: Ray Schwager
 Unit No: 70
 Reference Elevations: 2027.00 ft (KB)
 2022.00 ft (CF)
 KB to GR/CF: 5.00 ft

Serial #: 8374 Inside
 Press@RunDepth: psig @ 3421.00 ft (KB) Capacity: 8000.00 psig
 Start Date: 2014.11.13 End Date: 2014.11.13 Last Calib.: 2014.11.13
 Start Time: 07:40:49 End Time: 13:05:13 Time On Btm:
 Time Off Btm:

TEST COMMENT: 30-IFP-w k bl thru-out 1/4" to 1/2" bl
 30-ISIP-no bl
 30-FFP-no bl
 30-FSIP-no bl



PRESSURE SUMMARY

Time (Min.)	Pressure (psig)	Temp (deg F)	Annotation

Recovery

Length (ft)	Description	Volume (bbl)
20.00	Mud	0.10

* Recovery from multiple tests

Gas Rates

Choke (inches)	Pressure (psig)	Gas Rate (Mcf/d)



**TRILOBITE
TESTING, INC**

DRILL STEM TEST REPORT

TOOL DIAGRAM

John O Farmer Inc

36-8s-18w Rooks,KS

PO Box 352
Russell KS 67665-2635

Weigel Unit #1

Job Ticket: 60899

DST#: 2

ATTN: John O FarmerIV,Aust

Test Start: 2014.11.13 @ 07:40:12

Tool Information

Drill Pipe:	Length: 3297.00 ft	Diameter: 3.80 inches	Volume: 46.25 bbl	Tool Weight:	2200.00 lb
Heavy Wt. Pipe:	Length: 0.00 ft	Diameter: 0.00 inches	Volume: 0.00 bbl	Weight set on Packer:	25000.00 lb
Drill Collar:	Length: 120.00 ft	Diameter: 2.25 inches	Volume: 0.59 bbl	Weight to Pull Loose:	45000.00 lb
			<u>Total Volume: 46.84 bbl</u>	Tool Chased	0.00 ft
Drill Pipe Above KB:	21.00 ft			String Weight: Initial	39000.00 lb
Depth to Top Packer:	3417.00 ft			Final	39000.00 lb
Depth to Bottom Packer:	3462.00 ft				
Interval between Packers:	45.00 ft				
Tool Length:	147.00 ft				
Number of Packers:	3	Diameter: 6.75 inches			

Tool Comments:

Tool Description

Tool Description	Length (ft)	Serial No.	Position	Depth (ft)	Accum. Lengths
Change Over Sub	1.00			3397.00	
Shut In Tool	5.00			3402.00	
Hydraulic tool	5.00			3407.00	
Packer	5.00			3412.00	21.00 Bottom Of Top Packer
Packer	5.00			3417.00	
Stubb	1.00			3418.00	
Perforations	3.00			3421.00	
Recorder	0.00	8374	Inside	3421.00	
Recorder	0.00	8700	Outside	3421.00	
Blank Spacing	32.00			3453.00	
Perforations	5.00			3458.00	
Blank Off Sub	1.00			3459.00	
Blank Spacing	3.00			3462.00	45.00 Tool Interval
Packer	5.00			3467.00	
Stubb	1.00			3468.00	
Perforations	10.00			3478.00	
Recorder	0.00	8652	Below	3478.00	
Blank Spacing	62.00			3540.00	
Bullnose	3.00			3543.00	81.00 Bottom Packers & Anchor

Total Tool Length: 147.00



**TRILOBITE
TESTING, INC**

DRILL STEM TEST REPORT

FLUID SUMMARY

John O Farmer Inc

36-8s-18w Rooks,KS

PO Box 352
Russell KS 67665-2635

Weigel Unit #1

Job Ticket: 60899

DST#: 2

ATTN: John O FarmerIV,Aust

Test Start: 2014.11.13 @ 07:40:12

Mud and Cushion Information

Mud Type: Gel Chem

Cushion Type:

Oil API:

deg API

Mud Weight: 9.00 lb/gal

Cushion Length:

ft

Water Salinity:

ppm

Viscosity: 72.00 sec/qt

Cushion Volume:

bbf

Water Loss: 7.55 in³

Gas Cushion Type:

Resistivity: ohm.m

Gas Cushion Pressure:

psig

Salinity: 2500.00 ppm

Filter Cake: 1.00 inches

Recovery Information

Recovery Table

Length ft	Description	Volume bbf
20.00	Mud	0.098

Total Length: 20.00 ft Total Volume: 0.098 bbf

Num Fluid Samples: 0

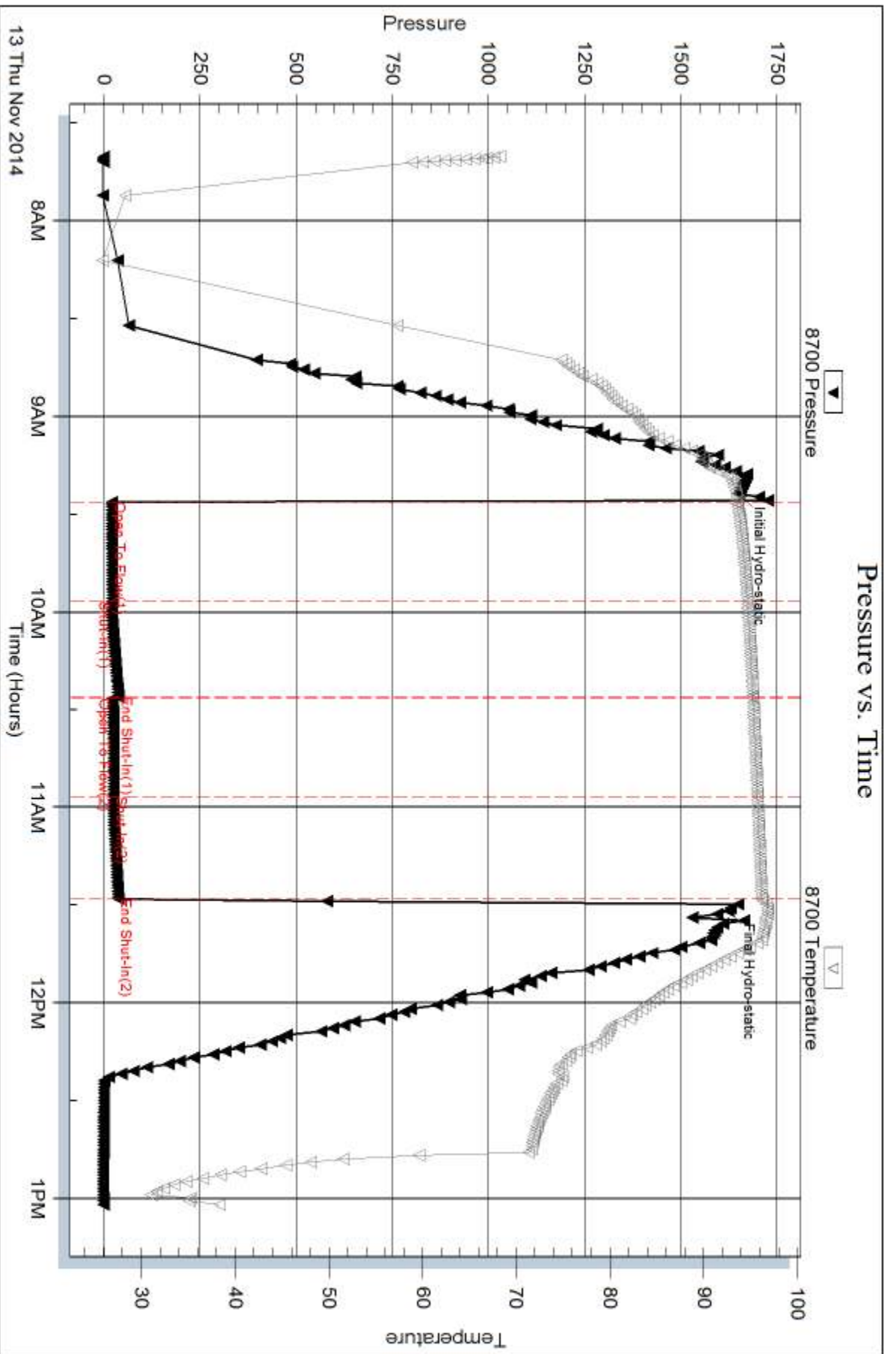
Num Gas Bombs: 0

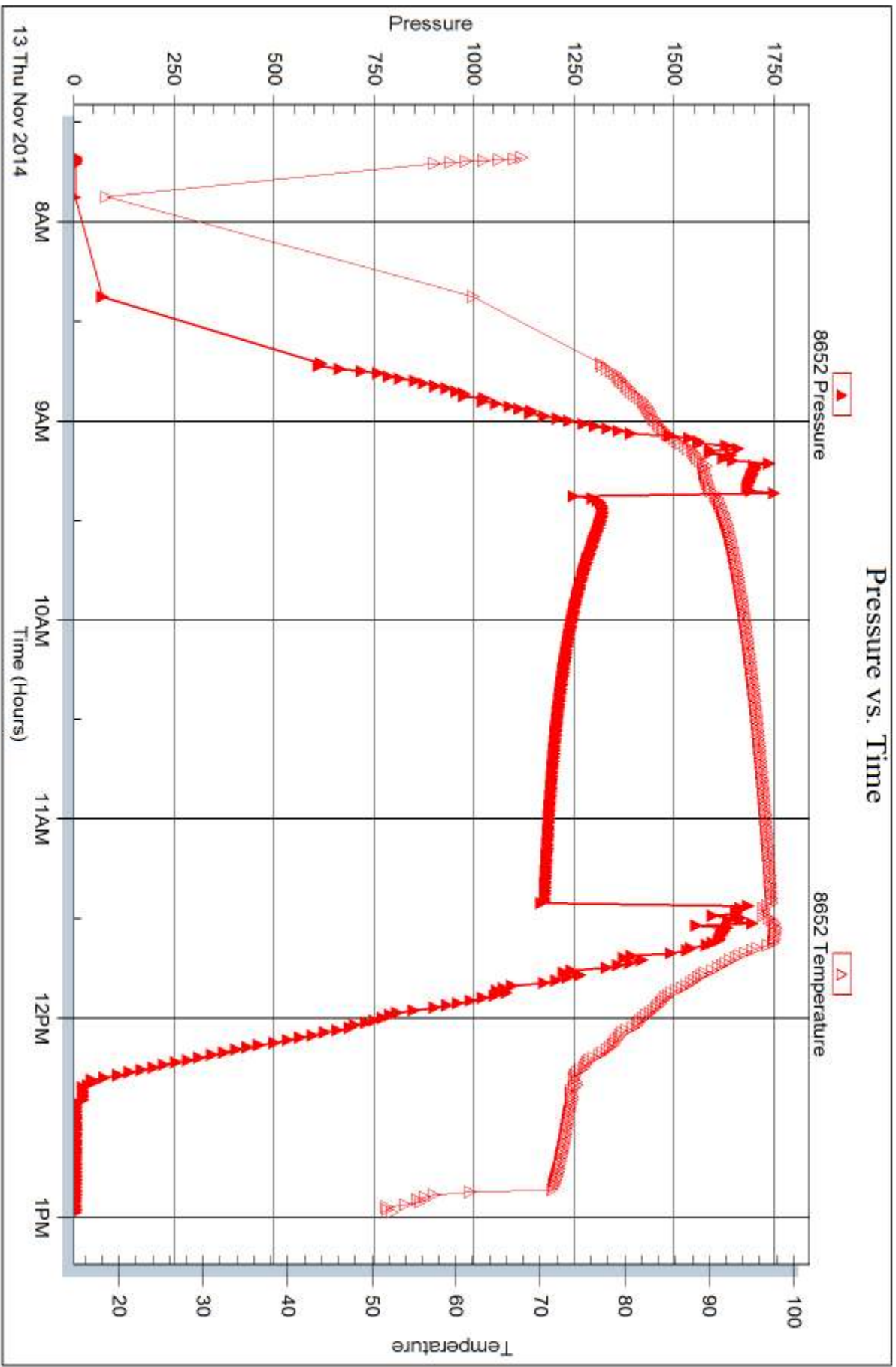
Serial #:

Laboratory Name:

Laboratory Location:

Recovery Comments:





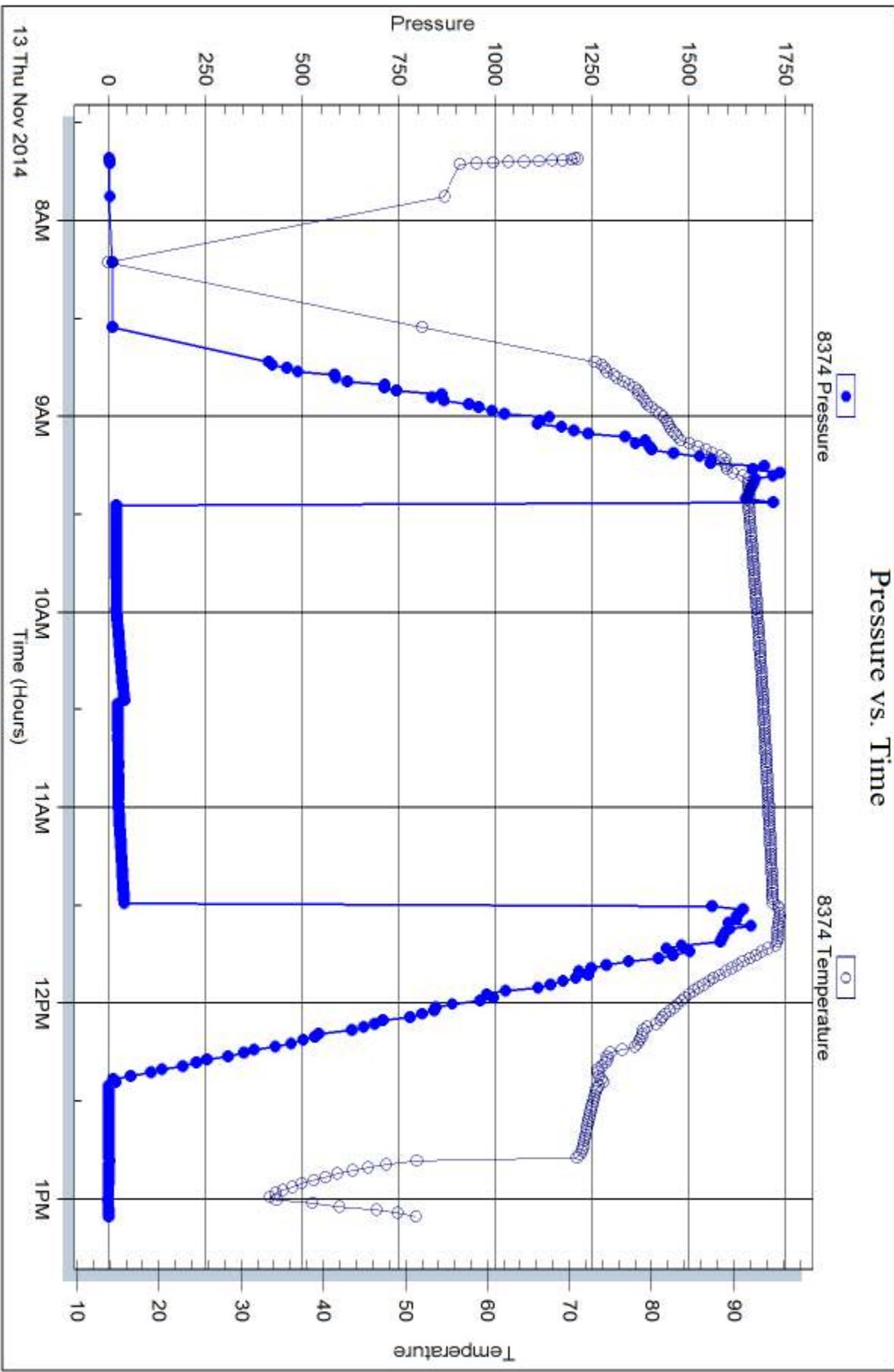
Serial #: 8374

Inside

John O Farmer Inc

Weigel Unit #1

DST Test Number: 2





DRILL STEM TEST REPORT

Prepared For: **John O Farmer Inc**

PO Box 352
Russell KS 67665-2635

ATTN: John O Farmer IV, Aust

Weigel Unit #1

36-8s-18w Rooks,KS

Start Date: 2014.11.13 @ 13:26:01

End Date: 2014.11.13 @ 19:06:55

Job Ticket #: 60900 DST #: 3

Trilobite Testing, Inc
1515 Commerce Parkway Hays, KS 67601
ph: 785-625-4778 fax: 785-625-5620

Printed: 2014.11.14 @ 11:56:10

John O Farmer Inc
36-8s-18w Rooks,KS
Weigel Unit #1
DST # 3
Arbuckle
2014.11.13



TRILOBITE TESTING, INC

DRILL STEM TEST REPORT

John O Farmer Inc
 PO Box 352
 Russell KS 67665-2635
 ATTN: John O Farmer IV, Aust

36-8s-18w Rooks, KS
Weigel Unit #1
 Job Ticket: 60900 **DST#: 3**
 Test Start: 2014.11.13 @ 13:26:01

GENERAL INFORMATION:

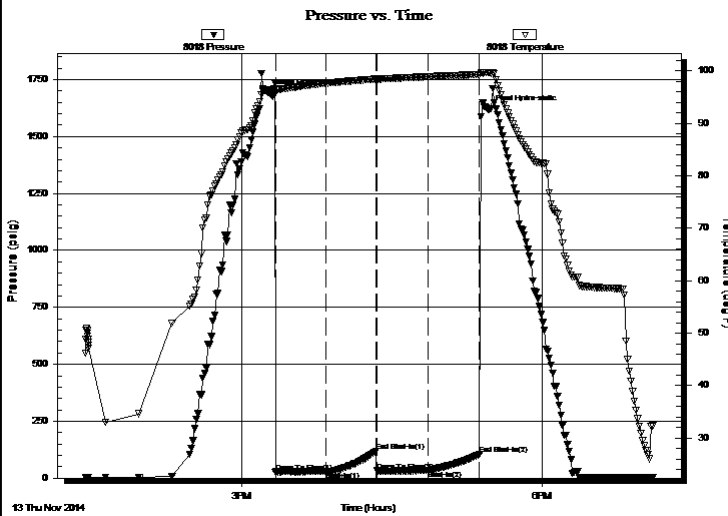
Formation: **Arbuckle**
 Deviated: No Whipstock: ft (KB)
 Test Type: Conventional Straddle (Reset)
 Time Tool Opened: 15:19:56 Tester: Ray Schwager
 Time Test Ended: 19:06:55 Unit No: 70
 Interval: **3417.00 ft (KB) To 3478.00 ft (KB) (TVD)** Reference Elevations: 2027.00 ft (KB)
 Total Depth: 3540.00 ft (KB) (TVD) 2022.00 ft (CF)
 Hole Diameter: 7.85 inches Hole Condition: Fair KB to GR/CF: 5.00 ft

Serial #: 8018

Inside

Press@RunDepth: 33.45 psig @ 3435.00 ft (KB) Capacity: 8000.00 psig
 Start Date: 2014.11.13 End Date: 2014.11.13 Last Calib.: 2014.11.13
 Start Time: 13:26:01 End Time: 19:06:55 Time On Btm: 2014.11.13 @ 15:16:26
 Time Off Btm: 2014.11.13 @ 17:27:56

TEST COMMENT: 30-IFP-w k bl thru-out 1/4" to surface bl
 30-ISIP-no bl
 30-FFP-no bl
 30-FSIP-no bl



PRESSURE SUMMARY

Time (Min.)	Pressure (psig)	Temp (deg F)	Annotation
0	1689.71	96.37	Initial Hydro-static
4	26.64	95.88	Open To Flow (1)
34	29.69	97.66	Shut-In(1)
64	118.40	98.46	End Shut-In(1)
65	31.43	98.44	Open To Flow (2)
95	33.45	98.92	Shut-In(2)
126	105.37	99.32	End Shut-In(2)
132	1618.72	99.73	Final Hydro-static

Recovery

Length (ft)	Description	Volume (bbl)
5.00	Mud w/show of oil	0.02

* Recovery from multiple tests

Gas Rates

Choke (inches)	Pressure (psig)	Gas Rate (Mcf/d)



TRILOBITE TESTING, INC

DRILL STEM TEST REPORT

John O Farmer Inc
 PO Box 352
 Russell KS 67665-2635
 ATTN: John O Farmer IV, Aust

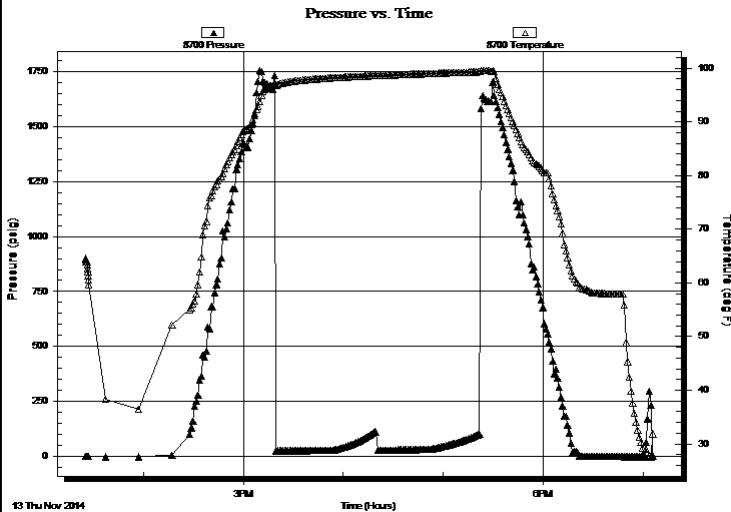
36-8s-18w Rooks, KS
Weigel Unit #1
 Job Ticket: 60900 **DST#: 3**
 Test Start: 2014.11.13 @ 13:26:01

GENERAL INFORMATION:

Formation: **Arbuckle**
 Deviated: No Whipstock: ft (KB)
 Test Type: Conventional Straddle (Reset)
 Time Tool Opened: 15:19:56
 Tester: Ray Schwager
 Time Test Ended: 19:06:55
 Unit No: 70
Interval: 3417.00 ft (KB) To 3478.00 ft (KB) (TVD)
 Reference Elevations: 2027.00 ft (KB)
 Total Depth: 3540.00 ft (KB) (TVD)
 2022.00 ft (CF)
 Hole Diameter: 7.85 inches
 Hole Condition: Fair
 KB to GR/CF: 5.00 ft

Serial #: 8700 Outside
 Press@RunDepth: psig @ 3435.00 ft (KB)
 Capacity: 8000.00 psig
 Start Date: 2014.11.13 End Date: 2014.11.13 Last Calib.: 2014.11.13
 Start Time: 13:25:16 End Time: 19:06:10 Time On Btm:
 Time Off Btm:

TEST COMMENT: 30-IFP-w k bl thru-out 1/4" to surface bl
 30-ISIP-no bl
 30-FFP-no bl
 30-FSIP-no bl



PRESSURE SUMMARY

Time (Min.)	Pressure (psig)	Temp (deg F)	Annotation

Recovery

Length (ft)	Description	Volume (bbl)
5.00	Mud w/show of oil	0.02

Gas Rates

Choke (inches)	Pressure (psig)	Gas Rate (Mcf/d)

* Recovery from multiple tests



**TRILOBITE
TESTING, INC.**

DRILL STEM TEST REPORT

John O Farmer Inc
 PO Box 352
 Russell KS 67665-2635
 ATTN: John O Farmer IV, Aust

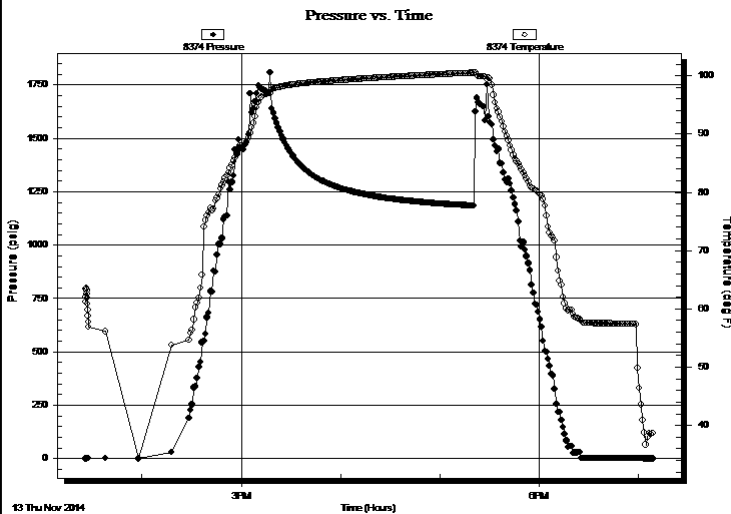
36-8s-18w Rooks, KS
Weigel Unit #1
 Job Ticket: 60900 **DST#: 3**
 Test Start: 2014.11.13 @ 13:26:01

GENERAL INFORMATION:

Formation: **Arbuckle**
 Deviated: No Whipstock: ft (KB)
 Time Tool Opened: 15:19:56
 Time Test Ended: 19:06:55
 Interval: **3417.00 ft (KB) To 3478.00 ft (KB) (TVD)**
 Total Depth: 3540.00 ft (KB) (TVD)
 Hole Diameter: 7.85 inches Hole Condition: Fair
 Test Type: Conventional Straddle (Reset)
 Tester: Ray Schwager
 Unit No: 70
 Reference Elevations: 2027.00 ft (KB)
 2022.00 ft (CF)
 KB to GR/CF: 5.00 ft

Serial #: 8374 Below (Straddle)
 Press@RunDepth: psig @ 3507.00 ft (KB) Capacity: 8000.00 psig
 Start Date: 2014.11.13 End Date: 2014.11.13 Last Calib.: 2014.11.13
 Start Time: 13:25:54 End Time: 19:08:18 Time On Btm:
 Time Off Btm:

TEST COMMENT: 30-IFP-w k bl thru-out 1/4" to surface bl
 30-ISIP-no bl
 30-FFP-no bl
 30-FSIP-no bl



PRESSURE SUMMARY

Time (Min.)	Pressure (psig)	Temp (deg F)	Annotation

Recovery

Length (ft)	Description	Volume (bbl)
5.00	Mud w/show of oil	0.02

* Recovery from multiple tests

Gas Rates

Choke (inches)	Pressure (psig)	Gas Rate (Mcf/d)



**TRILOBITE
TESTING, INC**

DRILL STEM TEST REPORT

TOOL DIAGRAM

John O Farmer Inc

36-8s-18w Rooks,KS

PO Box 352
Russell KS 67665-2635

Weigel Unit #1

Job Ticket: 60900

DST#: 3

ATTN: John O FarmerIV,Aust

Test Start: 2014.11.13 @ 13:26:01

Tool Information

Drill Pipe:	Length: 3294.00 ft	Diameter: 3.80 inches	Volume: 46.21 bbl	Tool Weight: 2200.00 lb
Heavy Wt. Pipe:	Length: 0.00 ft	Diameter: 0.00 inches	Volume: 0.00 bbl	Weight set on Packer: 25000.00 lb
Drill Collar:	Length: 120.00 ft	Diameter: 2.25 inches	Volume: 0.59 bbl	Weight to Pull Loose: 45000.00 lb
			<u>Total Volume: 46.80 bbl</u>	Tool Chased 0.00 ft
Drill Pipe Above KB:	18.00 ft			String Weight: Initial 39000.00 lb
Depth to Top Packer:	3417.00 ft			Final 39000.00 lb
Depth to Bottom Packer:	3478.00 ft			
Interval between Packers:	61.00 ft			
Tool Length:	147.00 ft			
Number of Packers:	3	Diameter: 6.75 inches		

Tool Comments:

Tool Description	Length (ft)	Serial No.	Position	Depth (ft)	Accum. Lengths
------------------	-------------	------------	----------	------------	----------------

Change Over Sub	1.00			3397.00	
Shut In Tool	5.00			3402.00	
Hydraulic tool	5.00			3407.00	
Packer	5.00			3412.00	21.00 Bottom Of Top Packer
Packer	5.00			3417.00	
Stubb	1.00			3418.00	
Perforations	17.00			3435.00	
Recorder	0.00	8018	Inside	3435.00	
Recorder	0.00	8700	Outside	3435.00	
Blank Spacing	34.00			3469.00	
Perforations	5.00			3474.00	
Blank Off Sub	1.00			3475.00	
Blank Spacing	3.00			3478.00	61.00 Tool Interval
Packer	5.00			3483.00	
Perforations	24.00			3507.00	
Recorder	0.00	8374	Below	3507.00	
Blank Spacing	33.00			3540.00	
Bullnose	3.00			3543.00	65.00 Bottom Packers & Anchor

Total Tool Length: 147.00



**TRILOBITE
TESTING, INC**

DRILL STEM TEST REPORT

FLUID SUMMARY

John O Farmer Inc

36-8s-18w Rooks,KS

PO Box 352
Russell KS 67665-2635

Weigel Unit #1

Job Ticket: 60900

DST#: 3

ATTN: John O FarmerIV,Aust

Test Start: 2014.11.13 @ 13:26:01

Mud and Cushion Information

Mud Type: Gel Chem

Cushion Type:

Oil API:

deg API

Mud Weight: 9.00 lb/gal

Cushion Length:

ft

Water Salinity:

ppm

Viscosity: 72.00 sec/qt

Cushion Volume:

bbf

Water Loss: 7.59 in³

Gas Cushion Type:

Resistivity: ohm.m

Gas Cushion Pressure:

psig

Salinity: 2500.00 ppm

Filter Cake: 1.00 inches

Recovery Information

Recovery Table

Length ft	Description	Volume bbf
5.00	Mud w/show of oil	0.025

Total Length: 5.00 ft Total Volume: 0.025 bbf

Num Fluid Samples: 0

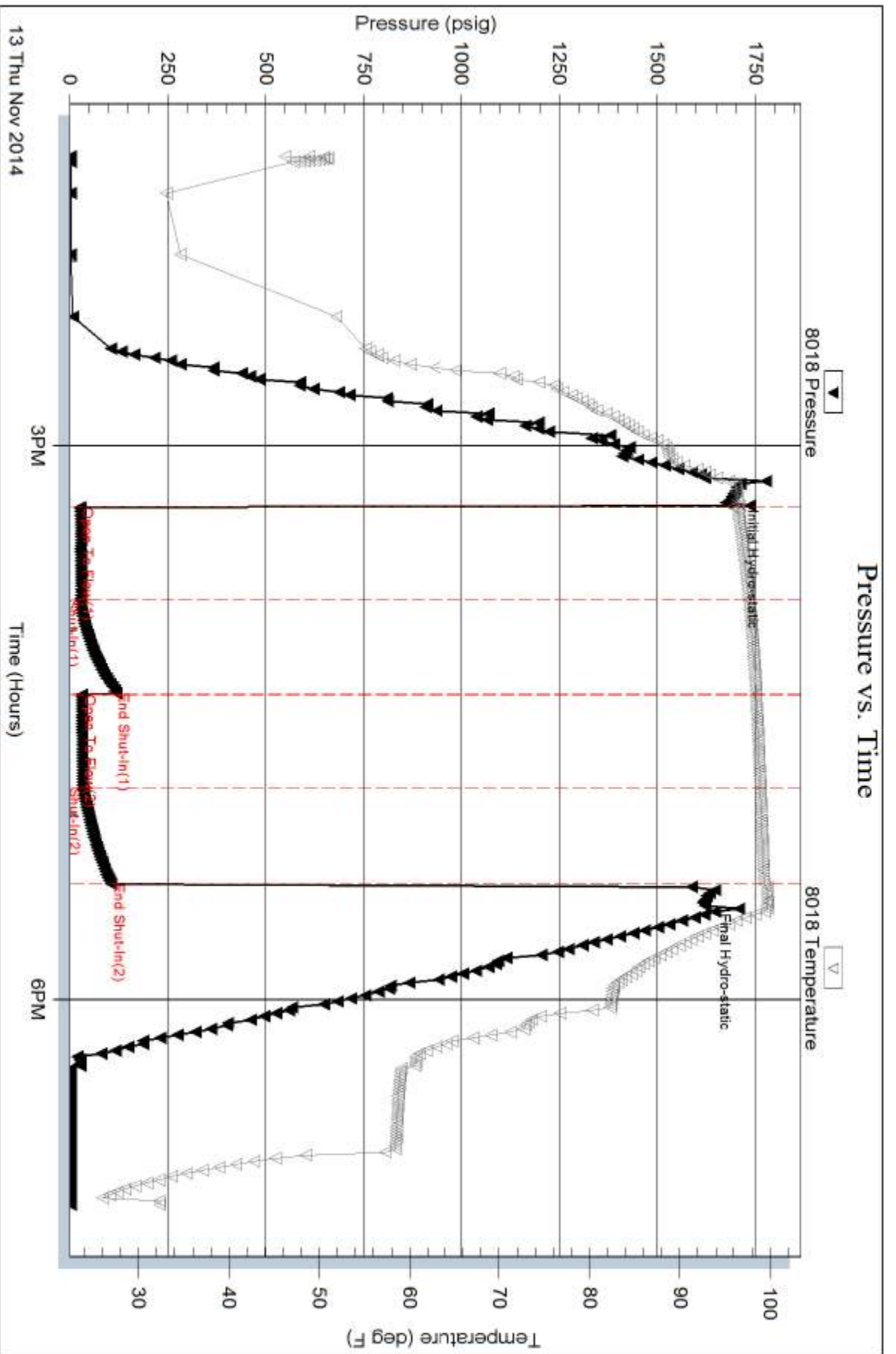
Num Gas Bombs: 0

Serial #:

Laboratory Name:

Laboratory Location:

Recovery Comments:

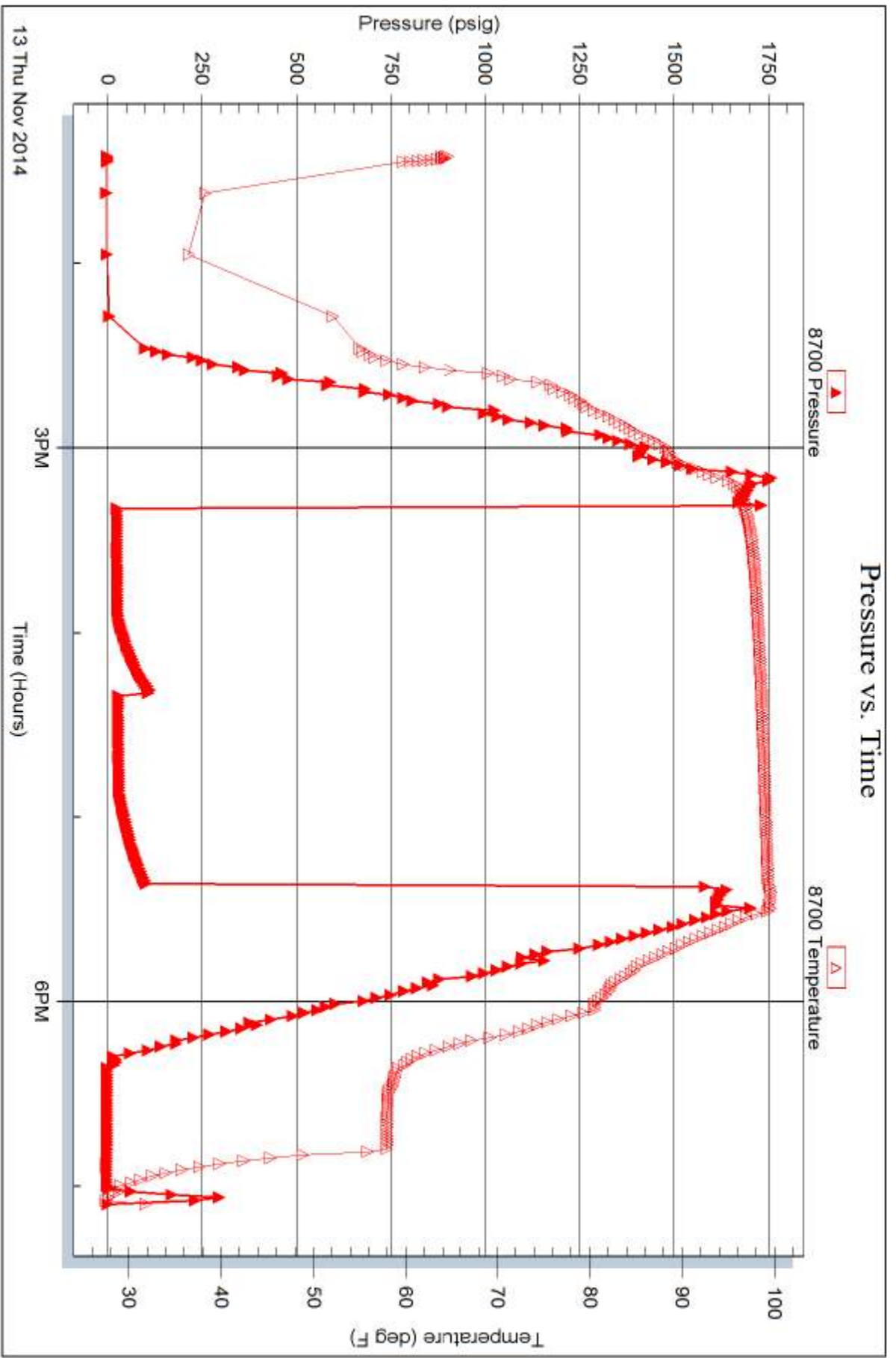


Serial #: 8700

Outside John O Farmer Inc

Weigel Unit #1

DST Test Number: 3



13 Thu Nov 2014

3 PM

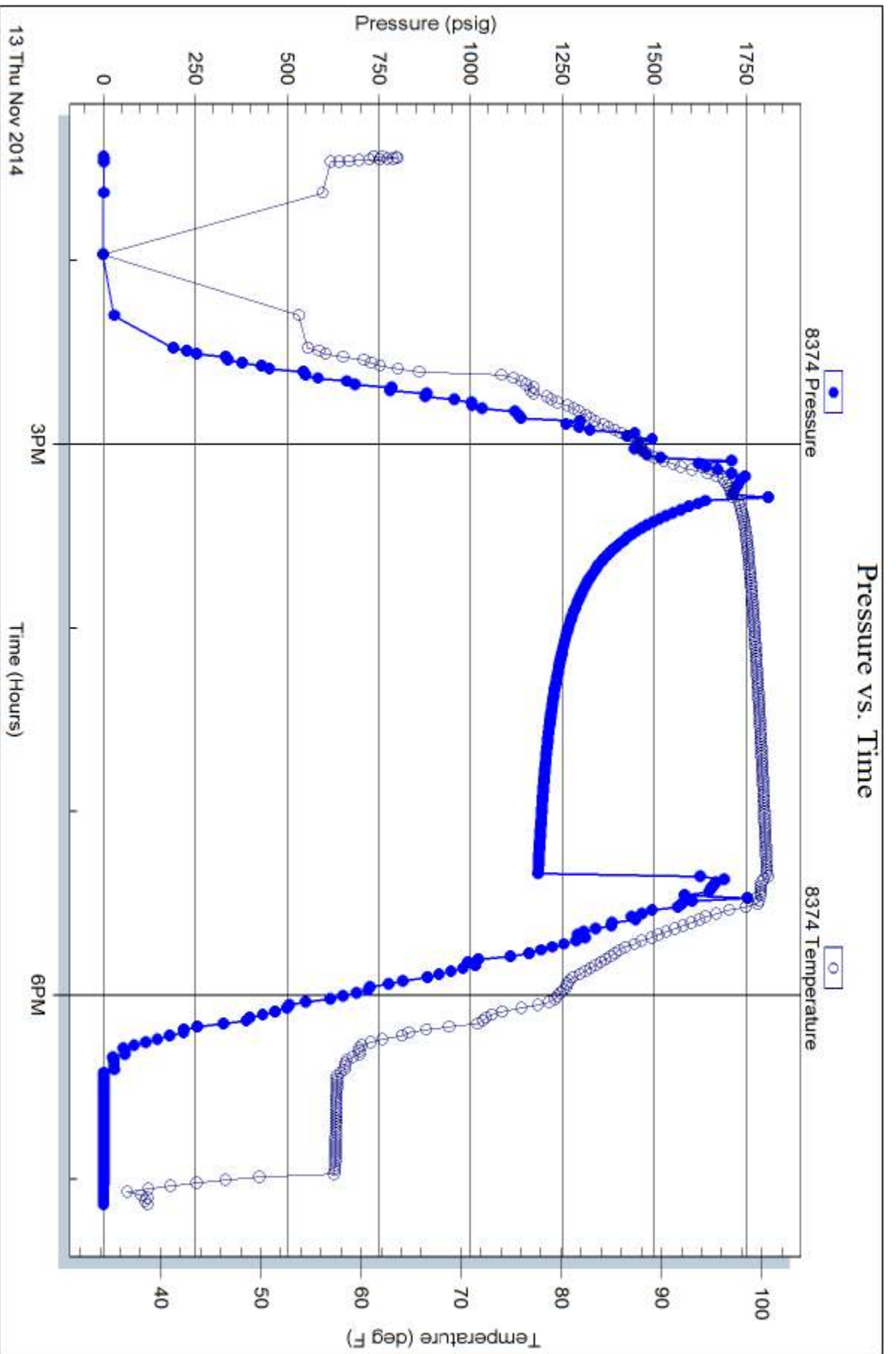
Time (Hours)

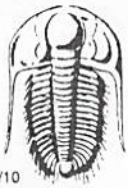
6 PM

Trilobite Testing, Inc

Ref. No: 609900

Printed: 2014.11.14 @ 11:56:11





TRILOBITE TESTING INC.

1515 Commerce Parkway • Hays, Kansas 67601

Test Ticket

NO. 60898

Well Name & No. Weigel Unit #1 Test No. 1 Date 11-12-14
 Company John D. Farmer Inc Elevation 2027 KB 2022 GL
 Address PO Box 352 Russell, Ks 67665-2635
 Co. Rep / Geo. AUSTIN KLAUS Rig WW rig 6
 Location: Sec. 36 Twp. 8^s Rge. 18^w Co. Rooks State Ks

Interval Tested 3338-3416 Zone Tested LKC H-K
 Anchor Length 78 Drill Pipe Run 3205 Mud Wt. 8.9
 Top Packer Depth 3333 Drill Collars Run 120 Vis 63
 Bottom Packer Depth 3338 Wt. Pipe Run - WL 8
 Total Depth 3416 Chlorides 2500 ppm System LCM 10th

Blow Description IFP - WEAK TO STRONG IN 15 MIN
ISIP - NO Blow
FFP - WEAK TO A GOOD BLOW 1/4" TO 8" BLOW
FSTIP - NO BLOW

Rec	Feet of	%gas	%oil	%water	%mud
<u>60</u>	<u>MW w/show good</u>		<u>75</u>	<u>25</u>	
<u>375</u>	<u>WATER</u>				

Rec Total 435 BHT 99 Gravity - API RW 25 @ \$2 °F Chlorides 52000 ppm

(A) Initial Hydrostatic 1613 Test 1150 T-On Location 0915
 (B) First Initial Flow 35 Jars _____ T-Started 1010
 (C) First Final Flow 138 Safety Joint _____ T-Open 1150
 (D) Initial Shut-In 295 Circ Sub _____ T-Pulled 1450
 (E) Second Initial Flow 139 Hourly Standby _____ T-Out 1647
 (F) Second Final Flow 220 Mileage 66 RT 102.30 Comments _____
 (G) Final Shut-In 292 Sampler _____
 (H) Final Hydrostatic 1556 Straddle _____
 Ruined Shale Packer _____
 Shale Packer _____
 Ruined Packer _____
 Extra Packer _____
 Extra Recorder _____
 Day Standby _____
 Accessibility _____
 Sub Total 1252.30 MP/DST Disc't _____

Initial Open 30
 Initial Shut-In 30
 Final Flow 60
 Final Shut-In 60
 Approved By _____ Our Representative RAY SCHWAGER THANK YOU

Trilobite Testing Inc. shall not be liable for damaged of any kind of the property or personnel of the one for whom a test is made, or for any loss suffered or sustained, directly or indirectly, through the use of its equipment, or its statements or opinion concerning the results of any test, tools lost or damaged in the hole shall be paid for at cost by the party for whom the test is made.



TRILOBITE TESTING INC.

1515 Commerce Parkway • Hays, Kansas 67601

Test Ticket

NO. 60899

Well Name & No. Weigel Unit #1 Test No. 2 Date 11-13-14
 Company John O. Farmer, Inc Elevation 2027 KB 2022 GL
 Address PO Box 352 Russell, Ks 67665-2635
 Co. Rep / Geo. Austin Klaus Rig WWrig6
 Location: Sec. 36 Twp. 8^s Rge. 18^w Co. Rooks State Ks

Interval Tested 3417-3462 Zone Tested Arbuckle
 Anchor Length 45 Drill Pipe Run 3297 Mud Wt. 9.1
 Top Packer Depth 3417-3412 Drill Collars Run 120 Vis 72
 Bottom Packer Depth 3462 Wt. Pipe Run - WL 7.6
 Total Depth 3540 Chlorides 2500 ppm System LCM 8#
 Blow Description IFP - Weak Blow thru-out 1/4" to 1/2" Blow
ISIP - NO Blow
FFP - NO Blow
FSIP - NO Blow

Rec	Feet of	%gas	%oil	%water	%mud
<u>20</u>	<u>Mud</u>				
Rec	Feet of	%gas	%oil	%water	%mud
Rec	Feet of	%gas	%oil	%water	%mud
Rec	Feet of	%gas	%oil	%water	%mud
Rec	Feet of	%gas	%oil	%water	%mud

Rec Total 20 BHT 96 Gravity - API RW - @ - °F Chlorides - ppm

(A) Initial Hydrostatic <u>1651</u>	<input checked="" type="checkbox"/> Test <u>1150</u>	T-On Location <u>0710</u>
(B) First Initial Flow <u>21</u>	<input type="checkbox"/> Jars	T-Started <u>0740</u>
(C) First Final Flow <u>22</u>	<input type="checkbox"/> Safety Joint	T-Open <u>0930</u>
(D) Initial Shut-In <u>38</u>	<input type="checkbox"/> Circ Sub	T-Pulled <u>1130</u>
(E) Second Initial Flow <u>23</u>	<input type="checkbox"/> Hourly Standby	T-Out <u>1301</u>
(F) Second Final Flow <u>25</u>	<input checked="" type="checkbox"/> Mileage <u>66RT</u> 102.30	Comments
(G) Final Shut-In <u>37</u>	<input type="checkbox"/> Sampler	
(H) Final Hydrostatic <u>1623</u>	<input checked="" type="checkbox"/> Straddle <u>600</u>	<input type="checkbox"/> Ruined Shale Packer
	<input type="checkbox"/> Shale Packer	<input type="checkbox"/> Ruined Packer
Initial Open <u>30</u>	<input type="checkbox"/> Extra Packer	<input type="checkbox"/> Extra Copies
Initial Shut-In <u>30</u>	<input type="checkbox"/> Extra Recorder	Sub Total <u>0</u>
Final Flow <u>30</u>	<input type="checkbox"/> Day Standby	Total <u>1852.30</u>
Final Shut-In <u>30</u>	<input type="checkbox"/> Accessibility	MP/DST Disc't
	Sub Total <u>1852.30</u>	

Approved By _____ Our Representative Ray Schwager *Thank you*

TriLOBITE Testing Inc. shall not be liable for damaged of any kind of the property or personnel of the one for whom a test is made, or for any loss suffered or sustained, directly or indirectly, through the use of its equipment, or its statements or opinion concerning the results of any test, tools lost or damaged in the hole shall be paid for at cost by the party for whom the test is made.



TRILOBITE TESTING INC.

1515 Commerce Parkway • Hays, Kansas 67601

Test Ticket

NO. 60900

Well Name & No. Weigel Unit #1 Test No. 3 Date 11-13-14
 Company John O. Farmer, Inc Elevation 2027 KB 2022 GL
 Address PO Box 352 Russell, Ka 67665-2635
 Co. Rep / Geo. Austin Klaus Rig WWeigel
 Location: Sec. 36 Twp. 8^s Rge. 18^w Co. Rooks State Ks

Interval Tested 3417-3478 Zone Tested Arbuckle
 Anchor Length 61 Drill Pipe Run 3294 Mud Wt. 9.1
 Top Packer Depth 3417-3412 Drill Collars Run 120 Vis 72
 Bottom Packer Depth 3478 Wt. Pipe Run - WL 7.6
 Total Depth 3540 Chlorides 2500 ppm System LCM 8#

Blow Description IFP - Weak Blow 1/4" To surface Blow
ISIP - NO Blow
FFP - NO Blow
FSIP - NO Blow

Rec	Feet of	%gas	%oil	%water	%mud
<u>5</u>	<u>Mud w/show of oil</u>				
Rec	Feet of	%gas	%oil	%water	%mud
Rec	Feet of	%gas	%oil	%water	%mud
Rec	Feet of	%gas	%oil	%water	%mud
Rec	Feet of	%gas	%oil	%water	%mud

Rec Total 5 BHT 101 Gravity - API RW - @ - ° F Chlorides - ppm

(A) Initial Hydrostatic <u>1689</u>	<input checked="" type="checkbox"/> Test <u>1150</u>	T-On Location <u>1301</u>
(B) First Initial Flow <u>26</u>	<input type="checkbox"/> Jars	T-Started <u>1325</u>
(C) First Final Flow <u>29</u>	<input type="checkbox"/> Safety Joint	T-Open <u>1520</u>
(D) Initial Shut-In <u>118</u>	<input type="checkbox"/> Circ Sub	T-Pulled <u>1720</u>
(E) Second Initial Flow <u>31</u>	<input type="checkbox"/> Hourly Standby	T-Out <u>1906</u>
(F) Second Final Flow <u>33</u>	<input checked="" type="checkbox"/> Mileage	Comments
(G) Final Shut-In <u>105</u>	<input type="checkbox"/> Sampler	
(H) Final Hydrostatic <u>1618</u>	<input checked="" type="checkbox"/> Straddle <u>600</u>	<input type="checkbox"/> Ruined Shale Packer
Initial Open <u>30</u>	<input type="checkbox"/> Shale Packer	<input type="checkbox"/> Ruined Packer
Initial Shut-In <u>30</u>	<input type="checkbox"/> Extra Packer	<input type="checkbox"/> Extra Copies
Final Flow <u>30</u>	<input type="checkbox"/> Extra Recorder	Sub Total <u>0</u>
Final Shut-In <u>30</u>	<input type="checkbox"/> Day Standby	Total <u>1750</u>
	<input type="checkbox"/> Accessibility	MP/DST Disc't
	Sub Total <u>1750</u>	

Approved By _____ Our Representative Ray Schwager Thank you

Trilobite Testing Inc. shall not be liable for damaged of any kind of the property or personnel of the one for whom a test is made, or for any loss suffered or sustained, directly or indirectly, through the use of its equipment, or its statements or opinion concerning the results of any test, tools lost or damaged in the hole shall be paid for at cost by the party for whom the test is made.