

L.D. DRILLING, INC.
MCCRARY LEASE
SE. 1/4, SECTION 19, T21S, R12W
STAFFORD COUNTY, KANSAS

Directions:

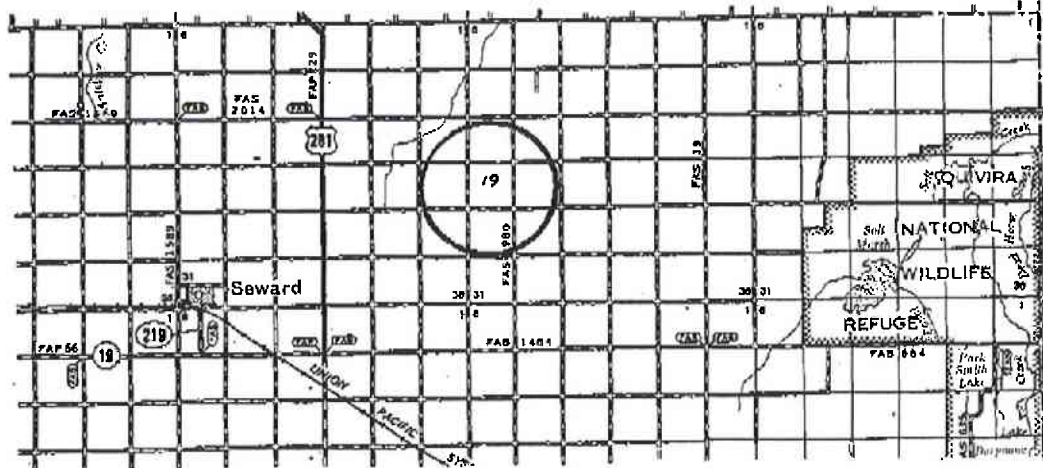
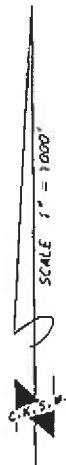
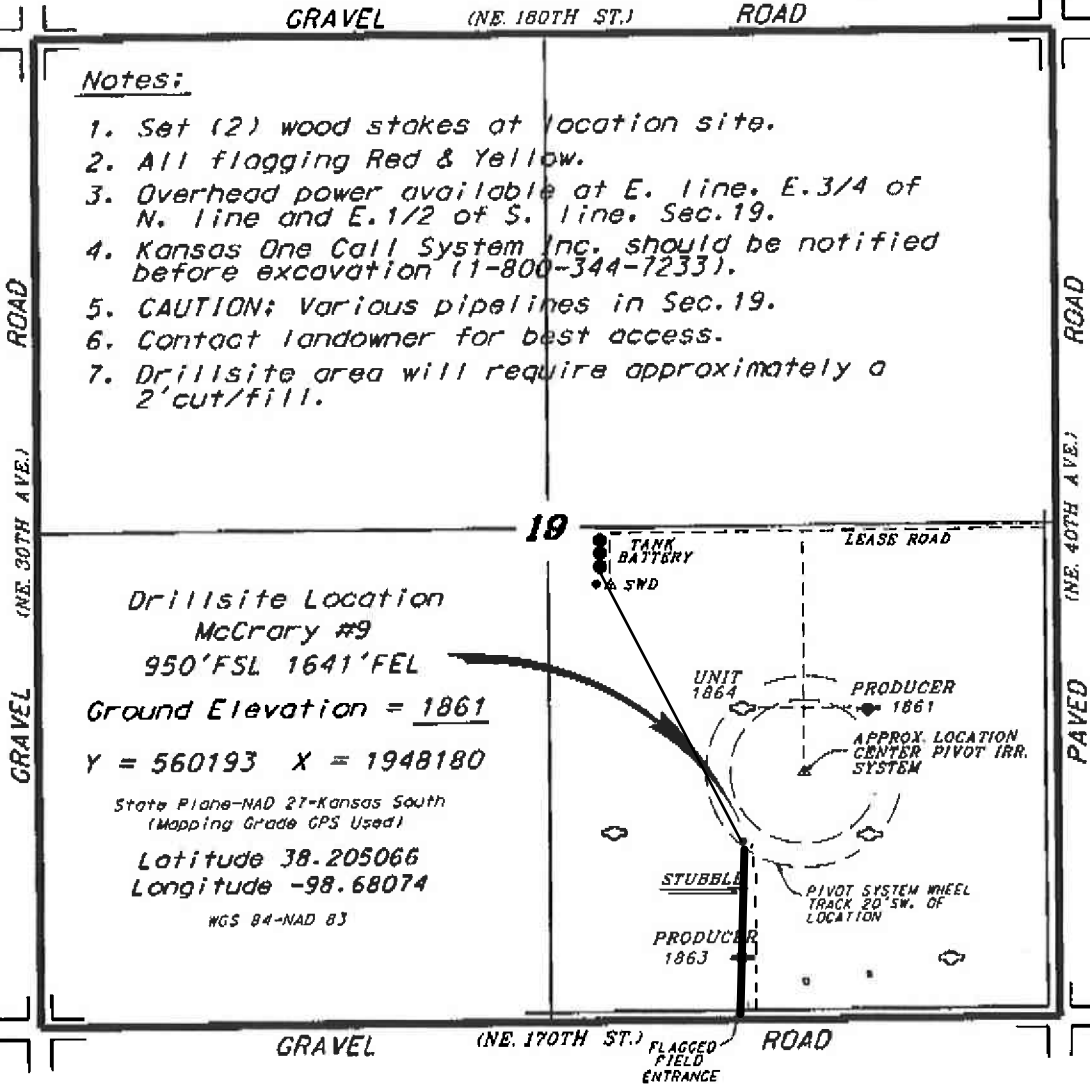
From the intersection of Highway 281 and Highway 19 go 3.0 miles North on Highway 281, then go 3.0 miles East on a county road to the SW corner of Section 19, then go 0.66 miles East to a flagged entrance on the north edge of road, then go 0.18 miles North to location.

GRAVEL (NE. 180TH ST.) ROAD

Notes:

1. Set (2) wood stakes at location site.
2. All flagging Red & Yellow.
3. Overhead power available at E. line. E. 3/4 of N. line and E. 1/2 of S. line. Sec. 19.
4. Kansas One Call System Inc. should be notified before excavation (1-800-344-7233).
5. CAUTION; Various pipelines in Sec. 19.
6. Contact landowner for best access.
7. Drillsite area will require approximately a 2' cut/fill.

*Ingress and egress to location as shown on this plot is per usage only and may not be legally opened for public use. Contact landowner, tenant and county road department for access.



* Controlling data is based upon the best maps and photographs available to us and upon a regular section of land containing 640 acres.
 * Approximate section lines were determined using the normal standard of care of oilfield surveyors practicing in the state of Kansas. The section corners, which establish the precise section lines, were not necessarily located, and the exact location of the drillsite location in the section is not guaranteed. Therefore, the operator securing this service and adopting this plot and all other data's relying thereon agree to hold Central Kansas Oilfield Services, Inc. its officers and employees harmless from all losses, costs and expenses and said entities released from any liability from incidental or consequential damages.
 * Elevations derived from National Geodetic Vertical Datum.

Date December 5, 2014