



**TRILOBITE
TESTING, INC.**

DRILL STEM TEST REPORT

Outlaw Well Service LLC

17-8s-17w Rooks KS

1408 West 42nd
Hays KS, 67601

Schindler 1W

Job Ticket: 60645

DST#: 2

ATTN: Steve Reed

Test Start: 2014.11.27 @ 21:33:00

GENERAL INFORMATION:

Formation: **Lansing "A-C"**

Deviated: No Whipstock: ft (KB)

Time Tool Opened: 00:08:45

Time Test Ended: 04:53:15

Test Type: Conventional Straddle (Reset)

Tester: Cody Bloedorn

Unit No: 73

Interval: 3116.00 ft (KB) To 3134.00 ft (KB) (TVD)

Reference Elevations: 1853.00 ft (KB)

Total Depth: 3371.00 ft (KB) (TVD)

1848.00 ft (CF)

Hole Diameter: 7.88 inches Hole Condition: Fair

KB to GR/CF: 5.00 ft

Serial #: 8648

Inside

Press @ Run Depth: 25.25 psig @ 3117.00 ft (KB)

Capacity: 8000.00 psig

Start Date: 2014.11.27

End Date:

2014.11.28

Last Calib.:

2014.11.28

Start Time: 21:33:05

End Time:

04:53:14

Time On Btm:

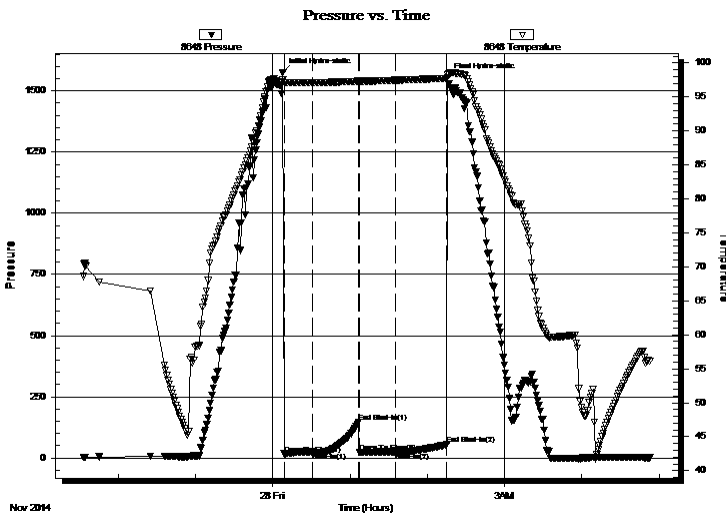
2014.11.28 @ 00:07:45

Time Off Btm:

2014.11.28 @ 02:15:45

TEST COMMENT: 30 - IF- 1/2" blow
30 - IS- No return
30 - FF- Surface return
30 - FS- No blow

PRESSURE SUMMARY



Time (Min.)	Pressure (psig)	Temp (deg F)	Annotation
0	1575.37	97.46	Initial Hydro-static
1	16.81	97.12	Open To Flow (1)
24	25.06	97.11	Shut-In(1)
59	145.84	97.32	End Shut-In(1)
60	24.53	97.28	Open To Flow (2)
88	25.25	97.46	Shut-In(2)
128	55.08	97.73	End Shut-In(2)
128	1552.99	98.31	Final Hydro-static

Recovery

Length (ft)	Description	Volume (bbl)
20.00	HOCM, 30%O, 70%G	0.28
0.00	186' of G.I.P.	0.00

* Recovery from multiple tests

Gas Rates

	Choke (inches)	Pressure (psig)	Gas Rate (Mcf/d)



TRILOBITE TESTING, INC.

DRILL STEM TEST REPORT

Outlaw Well Service LLC

17-8s-17w Rooks KS

1408 West 42nd
Hays KS, 67601

Schindler 1W

Job Ticket: 60645

DST#: 2

ATTN: Steve Reed

Test Start: 2014.11.27 @ 21:33:00

GENERAL INFORMATION:

Formation: **Lansing "A-C"**

Deviated: No Whipstock: ft (KB)

Time Tool Opened: 00:08:45

Time Test Ended: 04:53:15

Test Type: Conventional Straddle (Reset)

Tester: Cody Bloedorn

Unit No: 73

Interval: 3116.00 ft (KB) To 3134.00 ft (KB) (TVD)

Reference Elevations: 1853.00 ft (KB)

Total Depth: 3371.00 ft (KB) (TVD)

1848.00 ft (CF)

Hole Diameter: 7.88 inches Hole Condition: Fair

KB to GR/CF: 5.00 ft

Serial #: 8958 Below (Straddle)

Press@RunDepth: psig @ 3360.00 ft (KB)

Capacity: 8000.00 psig

Start Date: 2014.11.27 End Date: 2014.11.28

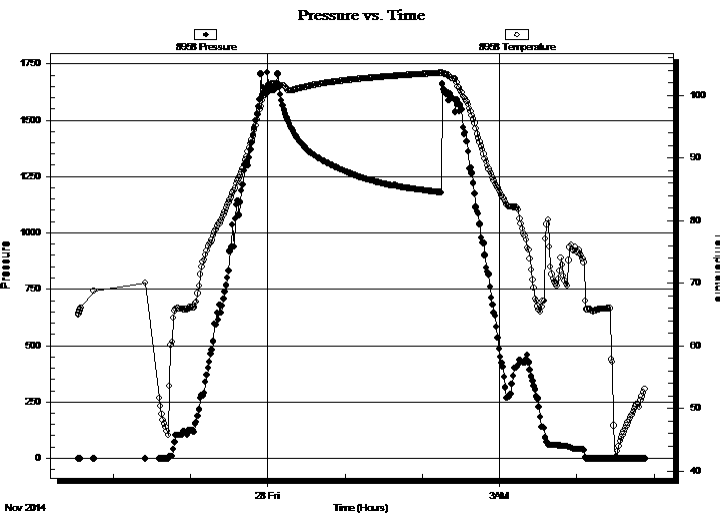
Last Calib.: 2014.11.28

Start Time: 21:33:05 End Time: 04:53:14

Time On Btm:

Time Off Btm:

TEST COMMENT: 30 - IF- 1/2" blow
30 - IS- No return
30 - FF- Surface return
30 - FS- No blow



PRESSURE SUMMARY

Time (Min.)	Pressure (psig)	Temp (deg F)	Annotation

Recovery

Length (ft)	Description	Volume (bbl)
20.00	HOCM, 30%O, 70%G	0.28
0.00	186' of G.I.P.	0.00

Gas Rates

	Choke (inches)	Pressure (psig)	Gas Rate (Mcf/d)

* Recovery from multiple tests



**TRILOBITE
TESTING, INC.**

DRILL STEM TEST REPORT

FLUID SUMMARY

Outlaw Well Service LLC

17-8s-17w Rooks KS

1408 West 42nd
Hays KS, 67601

Schindler 1W

Job Ticket: 60645

DST#: 2

ATTN: Steve Reed

Test Start: 2014.11.27 @ 21:33:00

Mud and Cushion Information

Mud Type: Gel Chem

Cushion Type:

Oil API:

deg API

Mud Weight: 9.00 lb/gal

Cushion Length:

ft

Water Salinity:

ppm

Viscosity: 55.00 sec/qt

Cushion Volume:

bbbl

Water Loss: 7.79 in³

Gas Cushion Type:

Resistivity: ohm.m

Gas Cushion Pressure:

psig

Salinity: 3700.00 ppm

Filter Cake: 2.00 inches

Recovery Information

Recovery Table

Length ft	Description	Volume bbl
20.00	HOCM, 30%O, 70%G	0.281
0.00	186' of G.I.P.	0.000

Total Length: 20.00 ft Total Volume: 0.281 bbl

Num Fluid Samples: 0

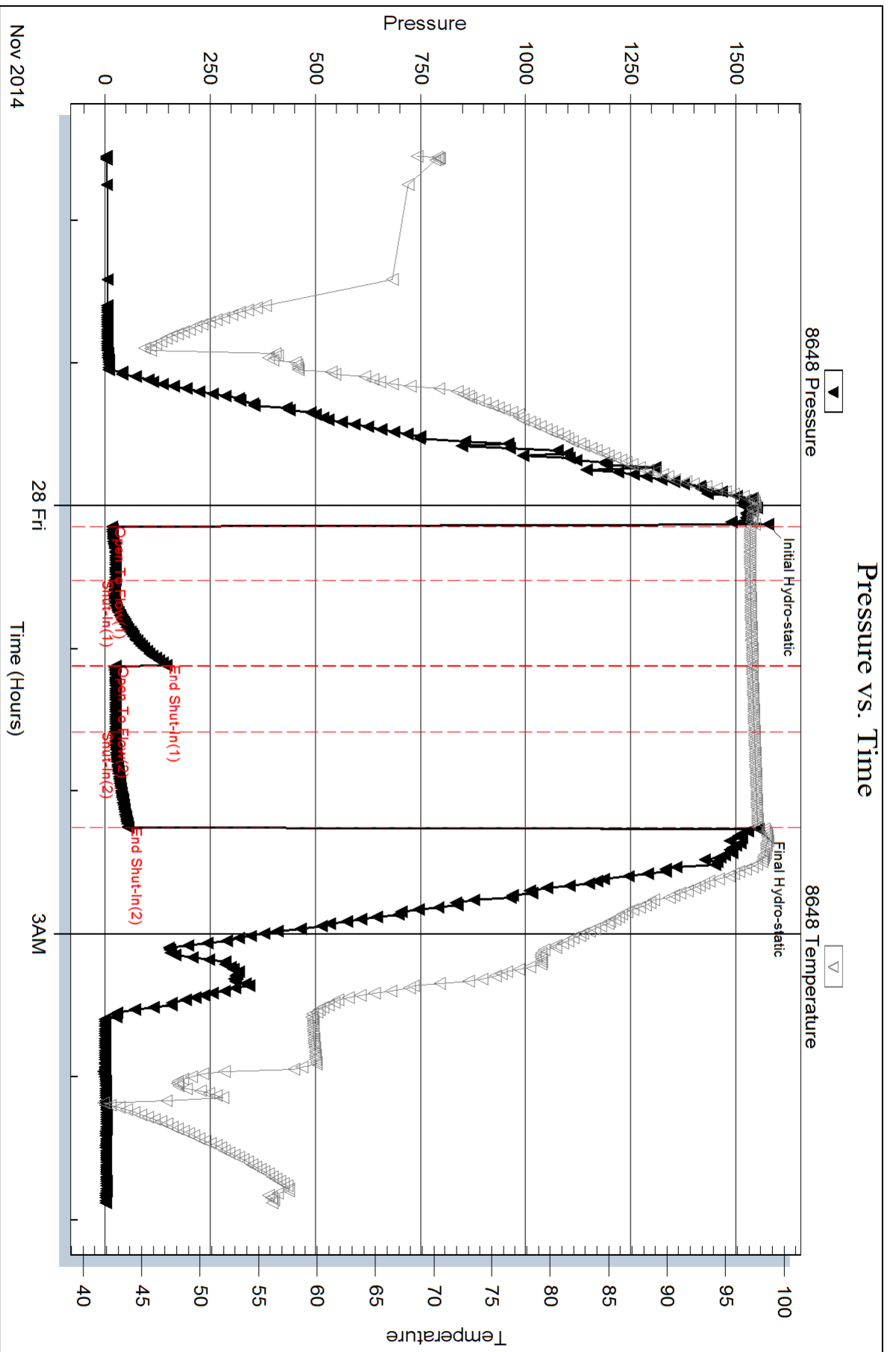
Num Gas Bombs: 0

Serial #:

Laboratory Name:

Laboratory Location:

Recovery Comments:

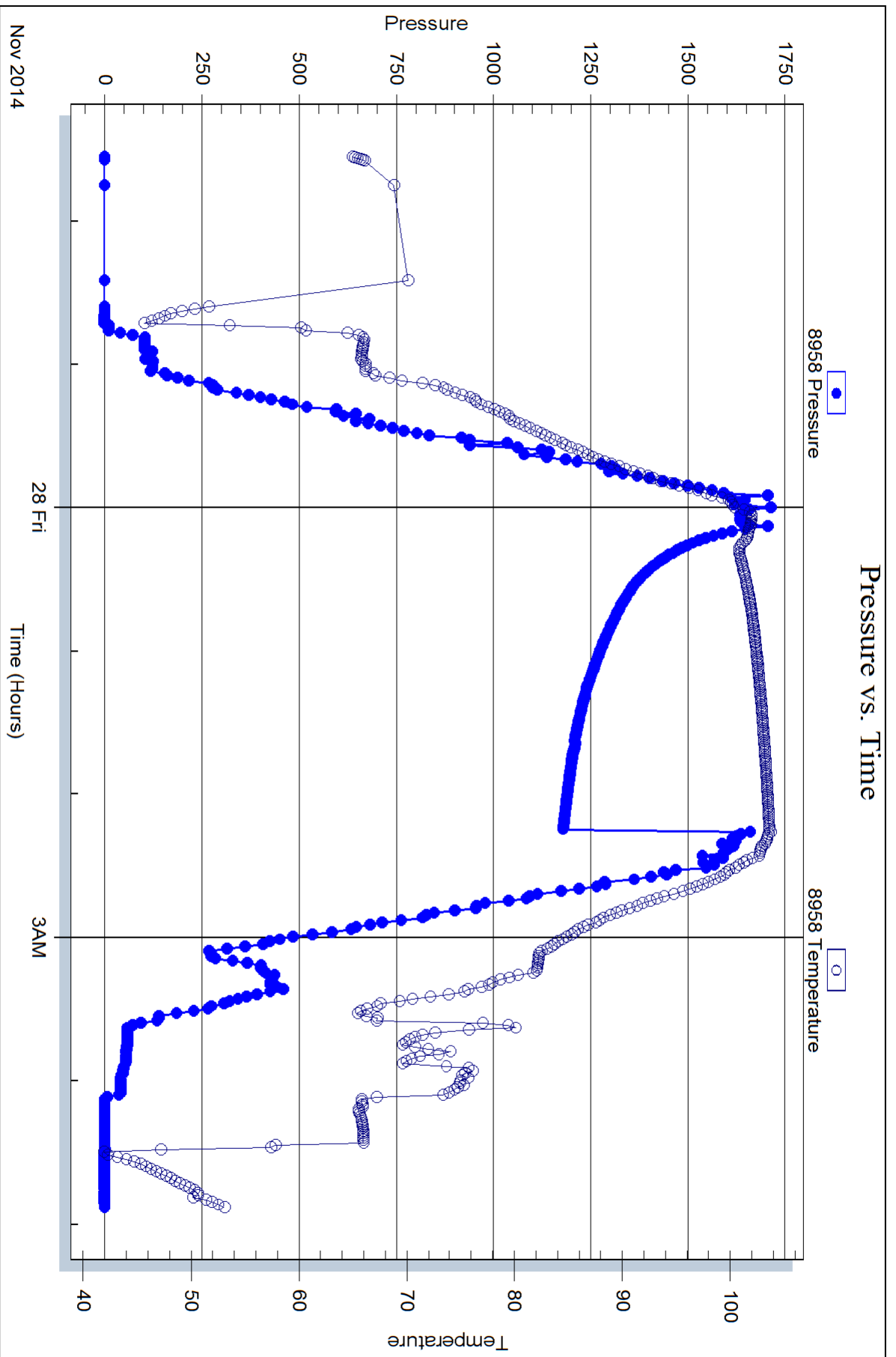


Serial #: 8958

Below (Stratley) Well Service LLC

Schindler 1W

DST Test Number: 2



Triobite Testing, Inc

Ref. No: 60645

Printed: 2014.11.28 @ 06:17:33