



**TRILOBITE TESTING, INC.**

# DRILL STEM TEST REPORT

Deutsch Oil Company

**35-29s-24w Ford Co. Ks.**

8300 E. 22nd St. N.  
Wichita, Ks. 67226

**Waneta # 1-35**

Job Ticket: 54144

**DST#: 1**

ATTN: Logan Walker

Test Start: 2014.09.09 @ 21:30:09

## GENERAL INFORMATION:

Formation: **Pawnee**

Deviated: No Whipstock: ft (KB)

Time Tool Opened: 05:18:39

Time Test Ended: 12:47:39

Test Type: Conventional Bottom Hole (Initial)

Tester: Matt Smith

Unit No: 53

**Interval: 5122.00 ft (KB) To 5182.00 ft (KB) (TVD)**

Reference Elevations: 2582.00 ft (KB)

Total Depth: 5182.00 ft (KB) (TVD)

2572.00 ft (CF)

Hole Diameter: 7.88 inches Hole Condition: Fair

KB to GR/CF: 10.00 ft

**Serial #: 6773**

**Inside**

Press@RunDepth: 200.02 psig @ 5123.00 ft (KB)

Capacity: 8000.00 psig

Start Date: 2014.09.09

End Date:

2014.09.10

Last Calib.:

2014.09.10

Start Time: 21:30:14

End Time:

12:47:39

Time On Btm:

2014.09.10 @ 05:10:09

Time Off Btm:

2014.09.10 @ 09:01:09

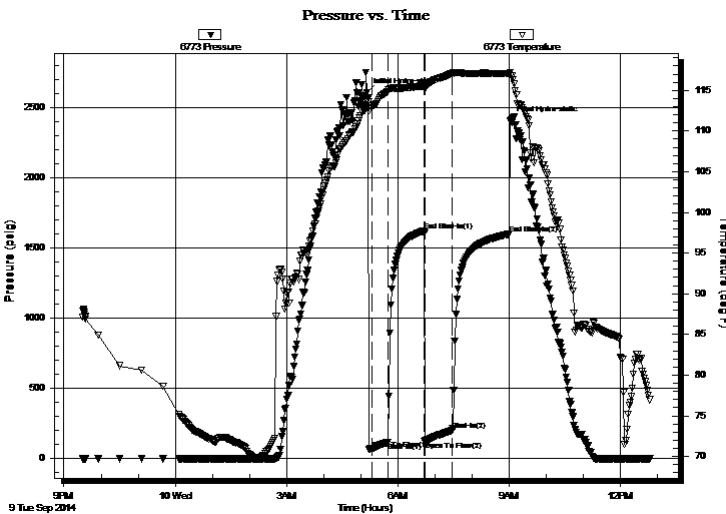
**TEST COMMENT:** IF: Fair - Strong blow . B.O.B. in 27 mins.

IS: No blow .

FF: Fair blow . Surf., - 7 1/2".

FS: No blow .

## PRESSURE SUMMARY



Time (Min.)	Pressure (psig)	Temp (deg F)	Annotation
0	2609.06	113.58	Initial Hydro-static
9	66.79	113.07	Open To Flow (1)
33	114.93	114.85	Shut-In(1)
93	1623.94	115.48	End Shut-In(1)
94	125.16	115.19	Open To Flow (2)
138	200.02	117.08	Shut-In(2)
230	1599.85	117.07	End Shut-In(2)
231	2409.02	117.20	Final Hydro-static

## Recovery

Length (ft)	Description	Volume (bbl)
62.00	SOGMCW 5%g 45%m 50w	0.87
62.00	SOMCW 15%m 85%w	0.87
62.00	SOGWCM 10%g 45%w 45%m	0.87
62.00	SOGMCW 5%g 45%m 50%w	0.87
62.00	SOGWCM 5%g 45%w 50%m	0.87
45.00	SOWCM 50%w 50%m	0.63

## Gas Rates

	Choke (inches)	Pressure (psig)	Gas Rate (Mcf/d)



**TRILOBITE  
TESTING, INC**

# DRILL STEM TEST REPORT

## FLUID SUMMARY

Deutsch Oil Company

**35-29s-24w Ford Co. Ks.**

8300 E. 22nd St. N.  
Wichita, Ks. 67226

**Waneta # 1-35**

Job Ticket: 54144

**DST#: 1**

ATTN: Logan Walker

Test Start: 2014.09.09 @ 21:30:09

### Mud and Cushion Information

Mud Type: Gel Chem  
Mud Weight: 9.00 lb/gal  
Viscosity: 51.00 sec/qt  
Water Loss: 10.79 in<sup>3</sup>  
Resistivity: ohm.m  
Salinity: 8300.00 ppm  
Filter Cake: 0.20 inches

Cushion Type:  
Cushion Length: ft  
Cushion Volume: bbl  
Gas Cushion Type:  
Gas Cushion Pressure: psig

Oil API: deg API  
Water Salinity: 29000 ppm

### Recovery Information

Recovery Table

Length ft	Description	Volume bbl
62.00	SOGMCW 5%g 45%m 50w	0.870
62.00	SOMCW 15%m 85%w	0.870
62.00	SOGWCM 10%g 45%w 45%m	0.870
62.00	SOGMCW 5%g 45%m 50%w	0.870
62.00	SOGWCM 5%g 45%w 50%m	0.870
45.00	SOWCM 50%w 50%m	0.631
0.00	137' G.I.P. 100%g	0.000
0.00	RW .10 @ 74 = 29000	0.000

Total Length: 355.00 ft      Total Volume: 4.981 bbl

Num Fluid Samples: 0

Num Gas Bombs: 0

Serial #: none

Laboratory Name:

Laboratory Location:

Recovery Comments: RW .10 @ 74 degrees = 29000 chlorides

