



**Woolsey Operating Company, LLC**

Scale 1:240 (5"=100') Imperial  
Measured Depth Log

Well Name: TUCKER 'B' GU #7  
Location: Section 11 - Township 34 South - Range 11 West  
License Number: 15-007-24207-0000 Region: Barber County, Kansas  
Spud Date: August 11, 2014 Drilling Completed: August 20, 2014  
Surface Coordinates: 990' FSL and 1320' FWL  
N 1/2 S 1/2 SW 1/4  
Bottom Hole  
Coordinates:  
Ground Elevation (ft): 1383' K.B. Elevation (ft): 1395'  
Logged Interval (ft): 4000' To: 5125' Total Depth (ft): 5125'  
Formation: Kansas City ----> Simpson Group  
Type of Drilling Fluid: Chemical Mud

Printed by MUD.LOG from WellSight Systems 1-800-447-1534 [www.WellSight.com](http://www.WellSight.com)

**OPERATOR**

Company: Woolsey Operating Company, LLC  
Address: 125 N. Market, Suite 1000  
Wichita, KS 67202

**GEOLOGIST**

Name: Bill Klaver  
Company: Woolsey Operating Co. LLC  
Address: 125 N. Market, Wichita Kansas, 67202

## COMMENTS

Surface Casing: Spud at 3:30 pm on August 11, 2014, ran 5 joints of new 13 3/8" X 48#/ft casing to 235' KB (tally 220'). Cemented with 300 sx Class A, 2% gel, 3% cc. Plug down at 11:15 pm on August 11, 2014. Cement did circulate.

Production Casing: 5 1/2" X 15.5#/ft

Deviation Surveys: 1/2 at 235', 3/4 at 1011', 1/2 at 1519', 1/2 at 2024', 1/2 at 2487', 3/4 at 3036', 1/2 at 3988', 1/2 at 4273', 1/2 at 4644', 1/2 at 5125'.

Pipe Strap @ 4644', Board: 4655.14', Strap: 4653.59', Strap 1.55' short. No correction was made to the board.

Fossil Drilling Rig 3 Bit Record:

- 1) 17 1/2" Smith Tool RR in at 0' out at 234', 3.24 hours.
- 2) 7 7/8" Varel HE-21 in at 235' out at 4644', 91 hours
- 3) 7 7/8" Varel HE-29 RR in at 4644' out at 5125', 28 hours

Gas Detector: Woolsey Operating Co. Gas Shack #2

Mud System: Mud Co. Brad Bortz, Terry Ison, Engineers

DSTs: Trilobite Testing Co. Matt Smith, Tester

E-logs: Nabors Completion and Production Services, Dual Induction Laterolog w/SP, CNL/FDC w/PE, Gamma Ray and Caliper. Jason Cappelloci, Engineer.

## DSTs

DST #1 Mississippian, 4598'-4644', 30"-60"-60"-120". SB BOB in 30 seconds. Rec: 1074' GIP, 62' SGCM (2%Gas, 98% Mud), IHP 2269, IFP 38-49, ISIP 869, FFP 36-56, FSIP 932, FHP 2194. BHT 127 degrees.

## CREWS

Jim Wenrich, Toolpusher (surface time and moving)

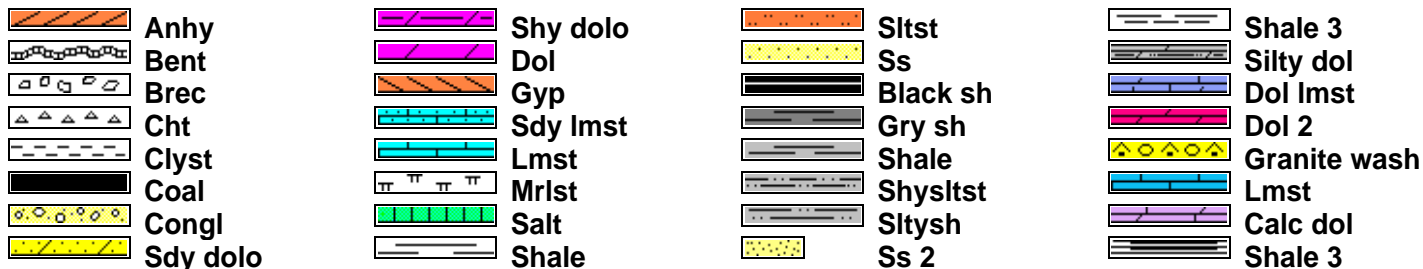
Daniel Orrente, Daylights

Ron Burns, Evening

Jimmie Holt, Morning

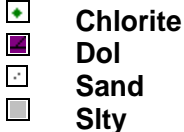
Chris Slatts, Relief

### ROCK TYPES

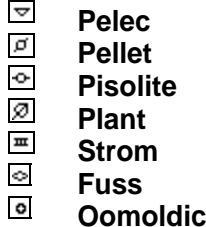
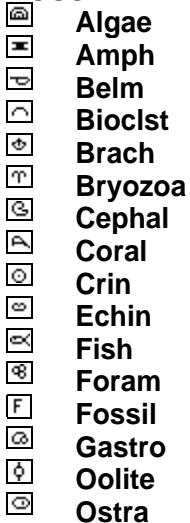


### ACCESSORIES

#### MINERAL



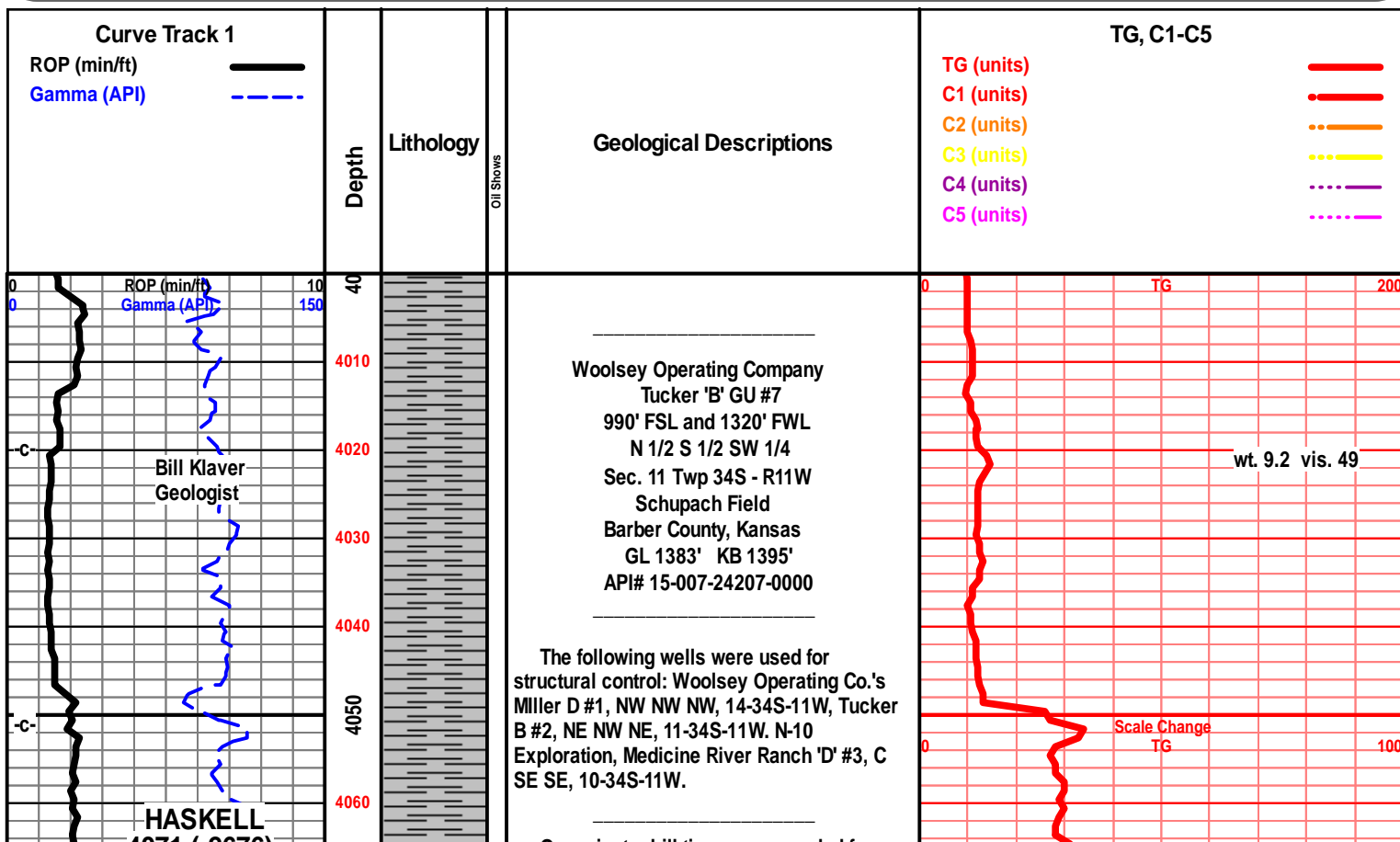
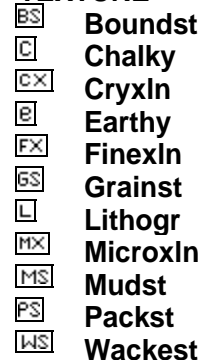
#### FOSSIL



#### STRINGER



#### TEXTURE



One minute drill time was recorded from 4000' to rotary total depth. Ten foot and circulating samples were rough neck gathered from 4300' to rotary total depth and delivered to the Survey at the completion of the test.

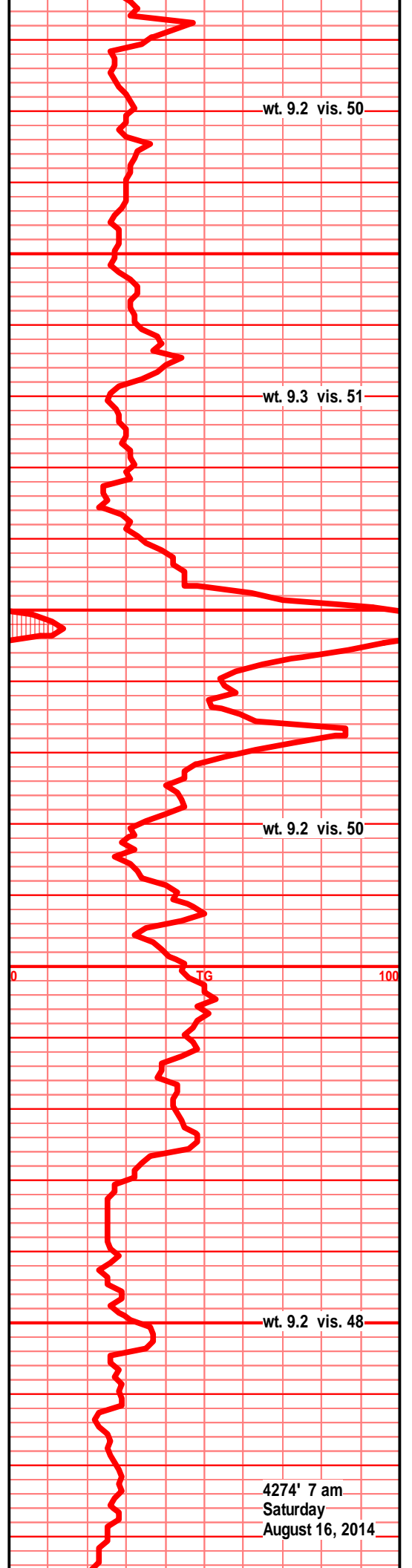
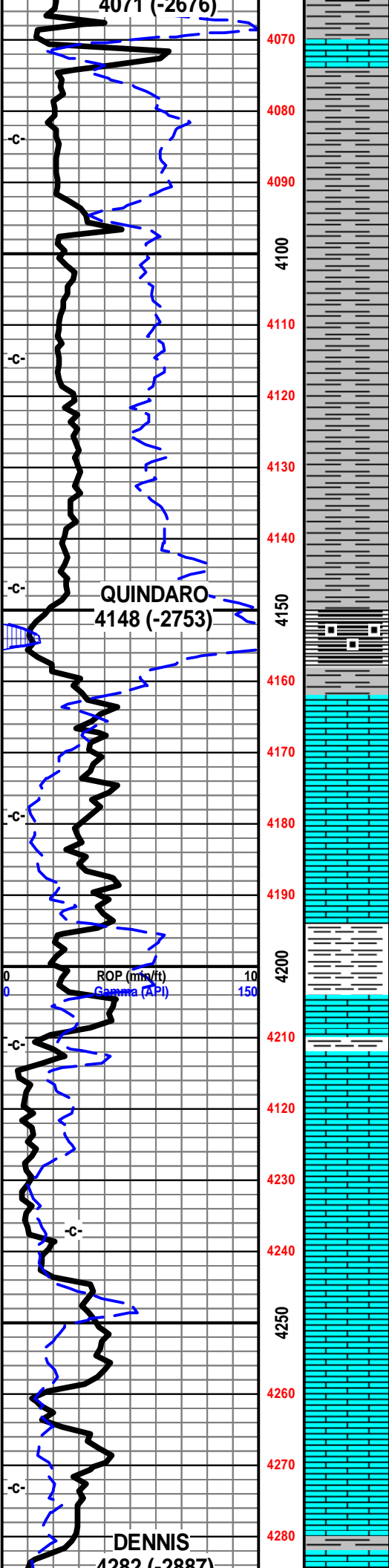
**7am Drilling Progress:**

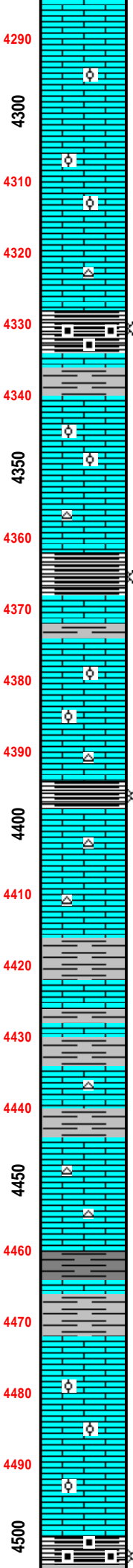
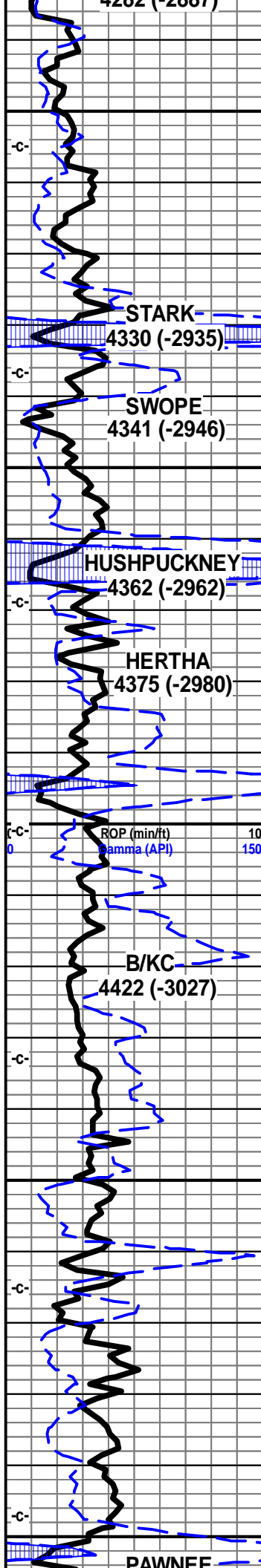
- August 11, 2014 MIRT/SPUD
- August 12, 2014 WOC, drill plug at 8 am
- August 13, 2014 Drilling at 1830'
- August 14, 2014 Drilling at 2880'
- August 15, 2014 Drilling at 3650'
- August 16, 2014 Drilling at 4274'
- August 17, 2014 CFS 4624' (Miss)
- August 18, 2014 Drilling at 4728'
- August 19, 2014 Drilling at 4998'
- August 20, 2014 E-logs out 7 am

**E-Log Tops:**

- Herrington 1785 (-390)
- Onaga 2620 (-1225)
- Wabaunsee 2667 (-1272)
- LeCompton 3365 (-1970)
- Kanwaka 3449 (-2054)
- Elgin Sand 3499 (-2104)
- Heebner 3647 (-2252)
- Toronto 3659 (-2264)
- Douglas Grp 3686 (-2291)
- Haskell (Brown) Lime 4074 (-2679)
- Quiindaro 4151 (-2756)
- Iola 4207 (-2812)
- Dennis 4285 (-2890)
- Stark 4330 (-2935)
- Swope 4342 (-2947)
- Hushpuckney 4362 (-2967)
- Hertha 4376 (-2981)
- B/Kansas City 4414 (-3019)
- Pawnee 4513 (-3118)
- Cherokee Group 4560 (-3165)
- Mississippi 4600 (-3205)
- C3 4600 (-3205)
- C2A 4623 (-3228)
- C2 4662 (-3267)
- Compton 4775 (-3380)
- Kinderhook 4787 (-3392)
- Woodford 4872 (-3477)
- Viola 4907 (-3512)
- Simpson Group 5013 (-3618)
- Simpson 'D' Sand 5025 (-3630)
- Wilcox 5034 (-3639)
- McLish Shale 5089 (-3694)
- LTD 5128 (-3733)

1st crm tan off wht lt gry f xln gran soft sub





chlky, foss frags, inter xln por, foss ool

1st crm tan off wht f xln soft sub chlky, foss frags, ool/pelletal, inter xln por, calc xln fill

1st off wht crm tan, f xln gran soft sub chlky, foss frags, calc xln fill, ool pelletal

1st crm tan off wht lt gry f xln, gran soft, sub chlky, foss frags, foss ool/pelletal, inter xln por, calc xln fill

1st wht off wht crm tan lt gry f xln gran soft sub chlky, foss frags, foss ool pelletal, calc xln fill

shl gry dkr gry blk, blk carb, wxy grsy text, gas bubs, 1st tan off wht crm f xln soft sub chlky foss frags, pp moldic por, inter xln por, calc xln fill

1st crm tan off wht f xln gran soft sub chlky foss frags, foss mold pp por, inter xln por, calc xln fill tr ool/pelletal

1st crm tan off wht f sli med xln gran soft sub chlky foss frags, foss ool, inter xln, pp port, calc xln fill

shl gry blk, blk carb, wxy grsy gassy, 1st tan crm brn f vf xln dns hrd blk ang micro foss frags, calc xln fill

1st crm gry tan brn f tr vf xln blk ang hrd dns micro foss frags, foss ool, calc xln fill, tr sub chlky soft gran

1st crm tan off wht lt gry/brn f xln blk ang dns soft sub chlky micro foss frags, tr foss ool, pelletal

shl drk gry blk, blk carb text, gas bubs, 1st gry tan brn f tr vf xln dns hrd blk ang dns, sub chlky arg silty gran text

1st tan gry lt gry brn f vf xln dns, hrd blk ang, micro foss, tr sub chlky, foss frags, ool/pelletal, tr chrt tan lt gry shrp opa

shl gry, drk gry brn, silty gritty, calc, 1st drk gry, gry brn f mic xln dns hrd blk ang calc,

sh gry, gry brn, silty gritty calc, 1st drk gry, drk gry brn, brn, f vf xln dns hrd arg arg, silty gritty calc fill tr micro foss

1st tan brn f vf xln dns hrd blk ang, micro foss frags, calc fill, tr sub chlky, tr silty gritty,

1st crm gry tan off wht f xln dns hrd blk ang micr foss frags, calc xln fill, tr sub chlky, tr arg silty

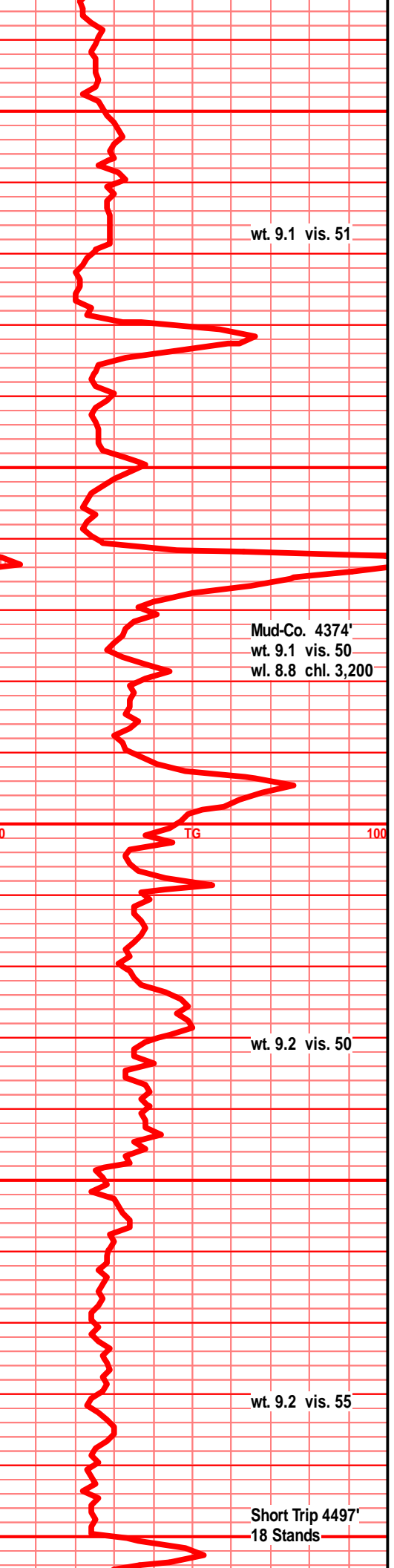
shl gry, drk gry gry gry green, silty gritty, 1st tan off wht gry f vf xln dns hrd blk ang arg

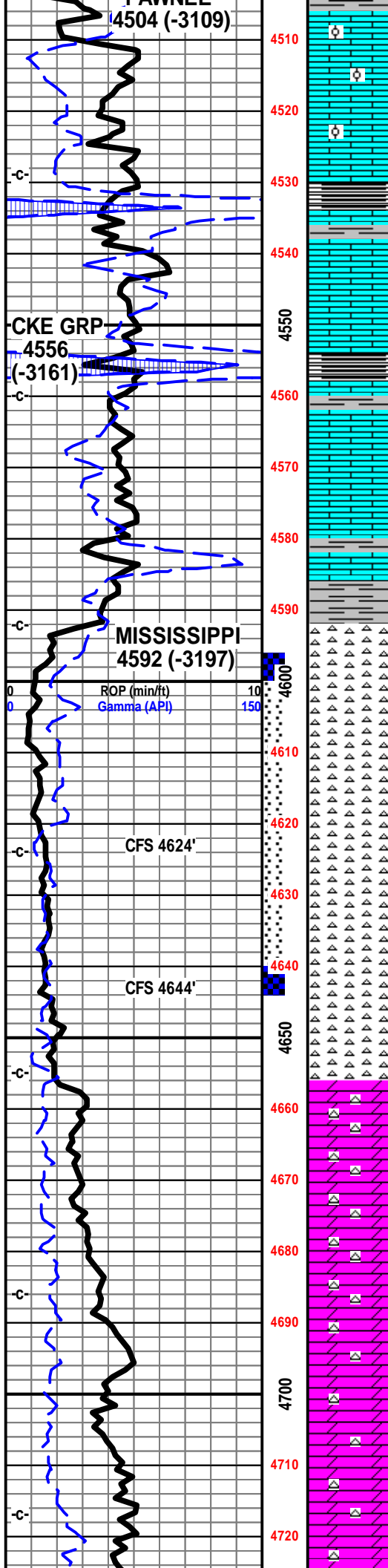
1st crm buff f vf xln, tr sli sub chlky, micro foss frags, micro ool, calc xstl inclu, tr calc xln fill

1st crm buff tan f vf xln blk ang dns hrd, tr sli sub chlky, foss frags, micro foss frags, micro ool, calc xstl inclu, tr calc xln fill

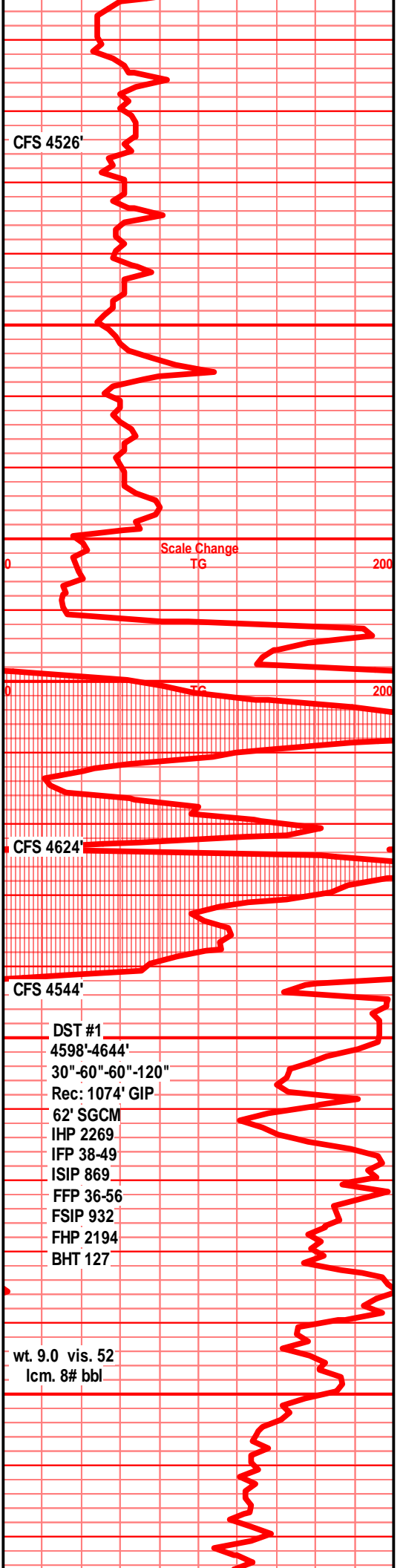
1st crm buff tan f xln dns hrd sli sub chlky micro foss/ool, calc fill

shl drk gry blk, blk w/carb text, blk carb wxy



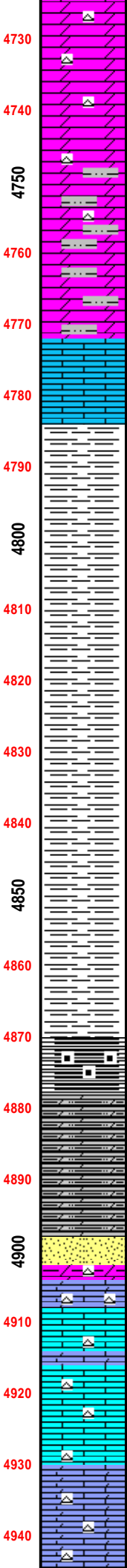
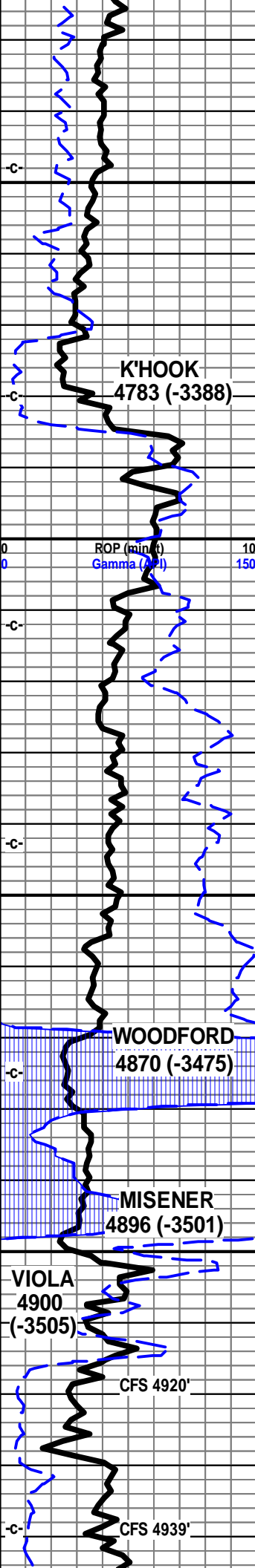


grsy blk ang pcs gas bubs  
 1st buff crm tan f vf xln mstly dns, hrd, sli sub chlky in prt, foss frags, foss ool, packed ool/calc fill in most, NVP, NS  
 1st buff crm tan f sli vf xln dns blk ang hrd dns, foss frags, micro ool, packed ool/dns calc fill in most, sli chlky in prt NS  
 shl gry blk, blk carb, 1st buff tan crm vf xln dn shrd blk, ang sli chlky, micro foss, ool, calc xln fill  
 1st crm tan lt gry f vf xln dns hrd blk, micro foss frags, mstly dns  
 1st crm tan lt gry f vf xln dns hrd blk ang pcs, tr sub chlky, foss frags, micro foss frags, tr chrt dull tan shrp frsh  
 shl gry blk, blk carb, wxy grsy, 1st crm dull tan f vf xln dns hrd ang pcs, sli sub chlky, micro foss frags,  
 1st crm tan dull tan, f vf xln dns hrd blk ang, arg shly text, silty gritty, sub chlky soft in prt, micro foss frags,  
 1st tan mstly gry f vf xln gran soft silty sub chlky, tr foss frags, clay fill, shl gry green silty gritty gran text,  
 chrt crm wht shrp frsh sub opa, blk ang dull pcs, w/tan brn stained sli weath edges, pp sli moldic por, chrt tan brn mott, weath gran sli trip text, sli spongy text, pp moldic, vug por, tan brn stain, gas bubs, SFO, fair/gd odor, dull UV  
 chrt wht off wht shrp frsh sub opa w/tan brn stained sli weath edge, chrt wht tan brn mott, weath gran trip text, sli spongy text, pp, moldic, vug por, tan brn stain, tr hvy blk stain, SFO, gas bubs fair/gd odor  
 chrt aa bec sli frsher, chrt wht wht/tan shrp frsh sub opa with tan brn, tr blk stained sli weath edges, pp sli mold por, tan brn stain, gas SSFO, chrt wht tan brn mott, tr blk, weath gran sli spongy trip text, pp moldic vug por, fair/dg odor, bleeding oil, gas bubs, some blk hvy grsy stain, dull UV  
 chrt wht off wht shrp frsh sub opa, blk ang pcs, w/tan brn weath text stained edges, pp moldic por SFO, gas bubs, odor  
 chrty dolo lt gry crm f vf xln tr sub chlky, tr glau, with wht lt blue gry chrt inclu, weath gran sli trip text edge, brn stain, pp moldic por along weath chrt edge, tan brn stain along chrt/dolo contact, SFO, stain, tr gas bubs, odor  
 dolo crm tan lt gry/green tint, f vf xln blk ang hrd, sndy text, tr glau, chrt inclu, wht off wht lt blue/gry, shrp frsh with weath gran sli trip edges, stain SSFO/gas bubs along weath text edge, stain SSFO along chrt/dolo contact  
 dolo crm tan lt gry, f vf xln blk ang dns, gran sndy text, tr glau, tr sub chlky text, tr inter xln por, mstly dns/tite, brn stain, SFO/gas bubs on brk, chrt aa  
 dolo aa, dolo bec drkr, drk tan drk gry tan, tr lt brn, f vf xln dns hrd, sli sub chlky, gran sli sndy text, snd grn inclu, tr glau, tr stain, chrt inclu, lt gry off wht shrp frsh opa, tr weath edge, tr stain





4728' 7 am  
Monday  
August 18, 2014



hrd blk ang arg, incr drk gry silty text, tr  
sndy text, tr glau, chrt dull gry tan shrp frsh  
sub opa tr stain

dolo, silty calc dolo, drk tan, drk tan gry, f vf  
xln dns hrd blk ang arg, silty gritty tr sndy,  
chrt dull tan gry shrp frsh opa

dolo, silty calc dolo, drk tan gry gry brn, f vf  
xln gran silty, tr sndy gritty text, tr chrty, chrt  
dull tan gry shrp frsh, shls, drk gry gritty calc  
silty

dolo calc dolo, med/drk gry f vf xln dns hrd  
silty blk pcs, tr sndy gritty, chrt dull tan shrp  
frsh, drk gry gritty sndy calc shl

dolo calc dolo, med/ddrk gry f vf xln gran silty  
gritty, sndy text, hrd, drk gry silty calc shls,  
silty gritty sndy

aa, lst dull tan buff f mic xln dns hrd blk,  
micro foss frags, sli sub chlky, chrt wht tan  
shrp frsh opa

shl drk gry, drk gry blk, platy tr silty, tr  
banded/bedded

shl drk gry, drk gry/brn, silty gritty, fnly silty,  
bedded, tr gas bubs

shl drk gry, med/drk gry tr blk, silty, gritty,  
bedded, vry fn snd grn inclu, tr gas bubs

shl med/drk gry, fnly silty, gritty, bedded, gas  
bubs

shl drk gry, gry/blk, silty gritty in prt, ratty  
slivers, fnly silty, bedded gas bubs

shl drk gry, drk gry/blk, blk, fnly silty, gritty,  
bedded, tr vfn snd grn iinclu, gas bubs

shl gry drk gry blk, blk, silty gritty ratty,  
bedded shards, gas bubs

shl, dolo calc shl in prt, blk, blk reddish brn in  
prt, blk ang shrp carb text, wxy grsy pcs,  
abun gas bubs, pyrititic in prt

silty dolo, drk gry blk, reddish brn, fnly  
silty/calc, gritty, vf snd grn inclu, tr gas bubs,  
tr filmy cond,

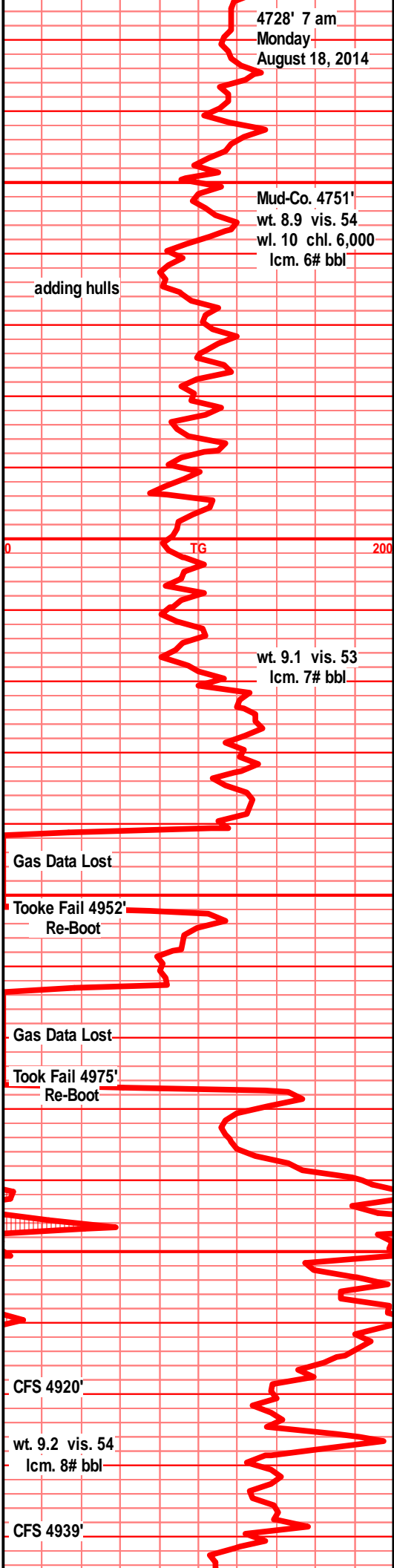
silty sli calc dolo shl, drk gry blk, reddish brn  
tint, fnly silty/gritty, vf snd grn inclu, gas bubs,  
tr filmy cond

sst off wht/lt gry, lt gry clstrs, f grnd, sub  
ang/sub rded grns, fair to slli fnly poorly srtd,  
poor to well cem, 50-50 tite blk hrd clstrs to  
lt gry sub fria prly cem. all with fair SFO, gas  
bubs on brk, most bleeding oil/gas, lt transl  
SFO, fair/gd odor

chrt tan brn shrp frsh frac, crmbly, foss,  
stain/SSO, lst wht lt gry mott f med xln, tr foss  
frags, inter xln por, tr calc fill, sli odor, lt  
transl SFO, gas bubs

lst crm wht, wht lt gry mott, f med xln, blk  
ang, crsly calc in prt, inter xln por, mstly  
crumbly soft chlky, tr pyritic, tr gas bubs, lt  
transl SFO, odor

lst, dolo in prt, tan lt brn f vf xln dns hrd blk  
ang dns, gran sndy text, chrty, chrt dull tan  
brn shrp frsh sub opa



Mud-Co. 4751'  
wt. 8.9 vis. 54  
wl. 10 chl. 6,000  
lcm. 6# bbl

wt. 9.1 vis. 53  
lcm. 7# bbl

Gas Data Lost

Tooke Fail 4952'  
Re-Boot

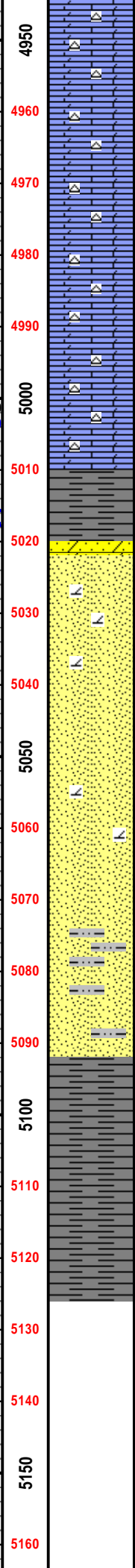
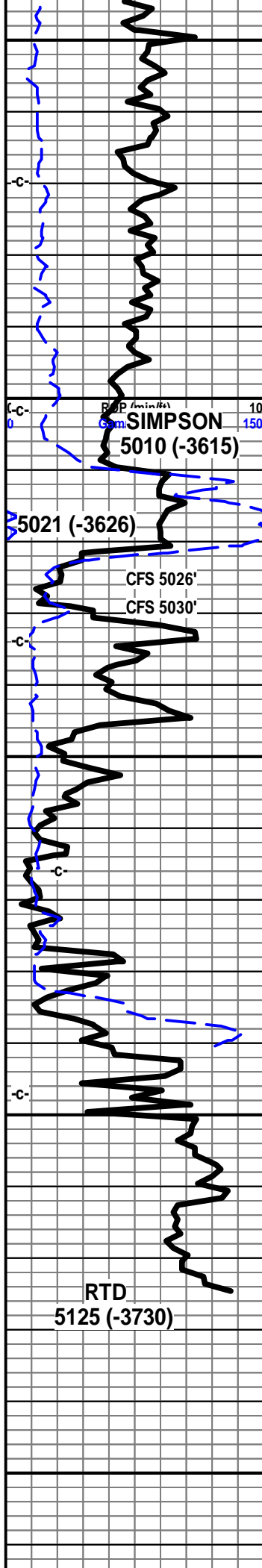
Gas Data Lost

Took Fail 4975'  
Re-Boot

CFS 4920'

wt. 9.2 vis. 54  
lcm. 8# bbl

CFS 4939'



4950 Ist, dolo in prt, crm tan brn, f mic xln dns hrd blk ang, tr sub chlky, gran sndy text, chrt dull tan brn shrp frsh sub opa  
 4960 dolo, lst, tan gry brn brn, f mic xln dns hrd blk ang sub chlky pcs, gran sub sndy text, sli crs sucr text in prt, chrty, chrt dull tan brn shrp frsh sub opa  
 4970 Ist/dolo tan, drk tan tr brn f mic xln gran gritty, sli sndy sub sucr text in prt, tr sub chlky, chrty, chrt dull tan brn shrp frsh sub opa  
 4980  
 4990 dolo, lst, tan drk tan brn f mic xln, gran gritty, sli sndy text, sub sucr, sli chlky in prt, micro foss frags, chrty, chrt dull tan brn shrp frsh sub opa  
 5000 dolo/lst in prt, tan drk brn f mic xln dns hrd blk pcs, gran sli sndy sucr text, tr sub chlky, much chrt tan dull brn shrp frsh sub opa  
 5010  
 5020 shl drk gry/green, blue gry teal green, wxy grsy text, tr w/snd grn inclu, pyritic sst off wht vry lt gry tint clstrs, f grnd, sub rded, w/srtd, well cem to sub fria, tr pyritic fill, tr inter gran por, silic cem, brn stain, lt transl SFO/gd gas bubs on brk, tr green clay fill, tr pyritic ppt  
 5030 sst lt gry mstly off wht clr clstrs, f grnd, sub ang, tr rded, fair to w/srtd, poorly cem, silic cem, mstly fria, inter gran por, tr gilson stain, tr gas bubs, nsfo, nodor  
 5040 sst sli wht mstly clr clstrs, f grnd, sub rded to rded grns, fair to well srtd, poorly cem, silic cem, inter gran por, gilsonitic stain, dead SO, tr gas bubs, nsfo, nodor, abun loose rded, frsted, w/rded snd grns in spl tray  
 5050  
 5060  
 5070 sst tan, off wht, lt brn clstrs, f grnd, sub ang, tr sub rded, w/srtd, poorly cem, tr calc cem, sub fria to fria/soft, fair inter gran por, blk flky gilson stain, tr clay fill, abun loose rded clr tr frosted snd grns in bottom of spl tray  
 5080  
 5090 sst crm tan clstrs f grnd, rded grns, tr sub rded, vry well srtd, poorly cem, silic tr calc cem, sott sub fria clstrs, inter gran por, tr gilson stain, abun loose snd grns in spl tray  
 5100 shl gry drk gry green, slick, wxy grsy text, snd grn inclu, pyritic  
 5110 shl gry dkr gry green teal green, fnly silty, grsy wxy text, pyritic  
 5120 shl gry drk gry green, teal green, fnly silty, snd grn inclu, pyritic  
 5130  
 5140  
 5150  
 5160 shl aa

