



**TRILOBITE TESTING, INC.**

# DRILL STEM TEST REPORT

Shelby Resources, LLC.  
 2717 Canal BLVD Suite C  
 Hays Ks, 67601  
 ATTN: Jeremy Schwartz

**15/18s/14w/Barton**  
**Wondra-Stoss #1-15**  
 Job Ticket: 60409 **DST#: 3**  
 Test Start: 2014.11.18 @ 12:00:00

## GENERAL INFORMATION:

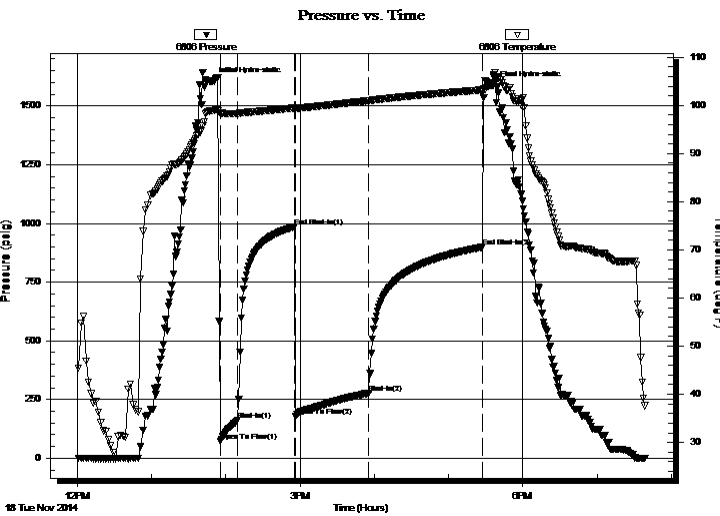
Formation: **Lansing "I-K"**  
 Deviated: No Whipstock: ft (KB)  
 Time Tool Opened: 13:55:30  
 Time Test Ended: 19:39:00  
 Interval: **3335.00 ft (KB) To 3405.00 ft (KB) (TVD)**  
 Total Depth: 3405.00 ft (KB) (TVD)  
 Hole Diameter: 7.88 inches Hole Condition: Good  
 Test Type: Conventional Bottom Hole (Initial)  
 Tester: Shane Konzem  
 Unit No: S3/30/Great Bend  
 Reference Elevations: 3222.00 ft (KB)  
 3179.00 ft (CF)  
 KB to GR/CF: 43.00 ft

## Serial #: 6806

Inside

Press @ Run Depth: 278.06 psig @ 3401.36 ft (KB) Capacity: 8000.00 psig  
 Start Date: 2014.11.18 End Date: 2014.11.18 Last Calib.: 2014.11.18  
 Start Time: 12:01:00 End Time: 19:39:00 Time On Btm: 2014.11.18 @ 13:49:30  
 Time Off Btm: 2014.11.18 @ 17:36:00

**TEST COMMENT:** 1st Open/ 15 Minutes. Good blow built to bottom of 5 gallon bucket in 6 minutes and 20 seconds.  
 1st Shut In/ 45 Minutes. No blow back.  
 2nd Open/ 60 Minutes. Good blow built to bottom of 5 gallon bucket in 10 minutes.  
 2nd Shut In/ 90 Minutes. No blow back.



## PRESSURE SUMMARY

Time (Min.)	Pressure (psig)	Temp (deg F)	Annotation
0	1603.03	98.94	Initial Hydro-static
6	71.22	98.46	Open To Flow (1)
20	161.59	98.29	Shut-In(1)
66	985.66	99.48	End Shut-In(1)
67	180.48	99.36	Open To Flow (2)
126	278.06	100.95	Shut-In(2)
218	899.45	103.19	End Shut-In(2)
227	1586.47	104.13	Final Hydro-static

## Recovery

Length (ft)	Description	Volume (bbl)
156.00	Gassy oil cut mud	0.77
0.00	15% gas, 25% oil, 60% mud	0.00
126.00	Oil cut muddy w ater	0.62
0.00	5% oil, 40% mud, 55% w ater	0.00
63.00	muddy w ater	0.73
0.00	40% mud, 60% w ater	0.00

## Gas Rates

	Choke (inches)	Pressure (psig)	Gas Rate (Mcf/d)



**TRILOBITE  
TESTING, INC.**

# DRILL STEM TEST REPORT

**FLUID SUMMARY**

Shelby Resources, LLC.  
2717 Canal BLVD Suite C  
Hays Ks, 67601  
ATTN: Jeremy Schwartz

**15/18s/14w/Barton**  
**Wondra-Stoss #1-15**  
Job Ticket: 60409      **DST#: 3**  
Test Start: 2014.11.18 @ 12:00:00

## Mud and Cushion Information

Mud Type: Gel Chem	Cushion Type:	Oil API:	deg API
Mud Weight: 9.00 lb/gal	Cushion Length: ft	Water Salinity:	27000 ppm
Viscosity: 50.00 sec/qt	Cushion Volume: bbl		
Water Loss: 7.98 in <sup>3</sup>	Gas Cushion Type:		
Resistivity: ohm.m	Gas Cushion Pressure: psig		
Salinity: 5300.00 ppm			
Filter Cake: 2.00 inches			

## Recovery Information

Recovery Table

Length ft	Description	Volume bbl
156.00	Gassy oil cut mud	0.767
0.00	15% gas, 25% oil, 60% mud	0.000
126.00	Oil cut muddy w ater	0.620
0.00	5% oil, 40% mud, 55% w ater	0.000
63.00	muddy w ater	0.733
0.00	40% mud, 60% w ater	0.000
126.00	Muddy w ater	1.767
0.00	20% mud, 80% w ater	0.000
63.00	100% w ater	0.884

Total Length: 534.00 ft      Total Volume: 4.771 bbl  
 Num Fluid Samples: 0      Num Gas Bombs: 0      Serial #:  
 Laboratory Name:      Laboratory Location:  
 Recovery Comments: resost recov, .22 at 40 degrees

