



DRILL STEM TEST REPORT

Prepared For: **Shelby Resources, LLC.**

2717 Canal BLVD
Suite C
Hays Ks, 67601

ATTN: Jeremy Schwartz

Wondra-Stoss #1-15

15/18s/14w/Barton

Start Date: 2014.11.18 @ 15:52:00

End Date: 2014.11.18 @ 23:20:30

Job Ticket #: 60410 DST #: 4

Trilobite Testing, Inc
PO Box 362 Hays, KS 67601
ph: 785-625-4778 fax: 785-625-5620

Printed: 2014.11.19 @ 12:17:20



**TRILOBITE
TESTING, INC**

DRILL STEM TEST REPORT

Shelby Resources, LLC.
2717 Canal BLVD
Suite C
Hays Ks, 67601
ATTN: Jeremy Schwartz

15/18s/14w/Barton

Wondra-Stoss #1-15

Job Ticket: 60410

DST#: 4

Test Start: 2014.11.18 @ 15:52:00

GENERAL INFORMATION:

Formation: **Arbuckle**

Deviated: No Whipstock: ft (KB)

Time Tool Opened: 17:43:30

Time Test Ended: 23:20:30

Test Type: Conventional Bottom Hole (Initial)

Tester: Shane Konzem

Unit No: S3/30/Great Bend

Interval: 3392.00 ft (KB) To 3428.00 ft (KB) (TVD)

Reference Elevations: 3222.00 ft (KB)

Total Depth: 3428.00 ft (KB) (TVD)

3179.00 ft (CF)

Hole Diameter: 7.88 inches Hole Condition: Fair

KB to GR/CF: 43.00 ft

Serial #: 6806 Inside

Press @ Run Depth: 119.88 psig @ 3424.00 ft (KB)

Capacity: 8000.00 psig

Start Date: 2014.11.18

End Date: 2014.11.18

Last Calib.: 2014.11.19

Start Time: 15:53:00

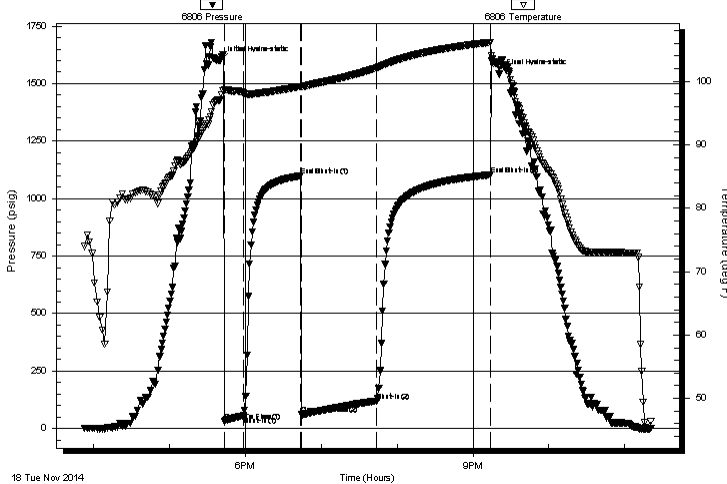
End Time: 23:20:30

Time On Btm: 2014.11.18 @ 17:40:30

Time Off Btm: 2014.11.18 @ 21:20:30

TEST COMMENT: 1st Open/ 15 Minutes. Weak blow built to 3 1/2 inches into bucket of deisel.
1st Shut In/ 45 Minutes. No blow back.
2nd Open/ 60 Minutes. Fair blow built to bottom of 5 gallon bucket in 45 minutes.
2nd Shut In/ 60 Minutes. No blow back.

Pressure vs. Time



PRESSURE SUMMARY

Time (Min.)	Pressure (psig)	Temp (deg F)	Annotation
0	1598.74	97.08	Initial Hydro-static
3	32.62	98.63	Open To Flow (1)
18	55.17	98.16	Shut-In(1)
63	1098.30	99.22	End Shut-In(1)
64	60.47	99.16	Open To Flow (2)
124	119.88	102.16	Shut-In(2)
213	1103.00	106.15	End Shut-In(2)
220	1541.64	102.72	Final Hydro-static

Recovery

Length (ft)	Description	Volume (bbl)
0.00	63 feet gas in pipe	0.00
315.00	100% clean gassy oil	1.70

Gas Rates

Choke (inches)	Pressure (psig)	Gas Rate (Mcf/d)



TRILOBITE TESTING, INC

DRILL STEM TEST REPORT

Shelby Resources, LLC.
 2717 Canal BLVD
 Suite C
 Hays Ks, 67601
 ATTN: Jeremy Schwartz

15/18s/14w/Barton
Wondra-Stoss #1-15
 Job Ticket: 60410 **DST#: 4**
 Test Start: 2014.11.18 @ 15:52:00

GENERAL INFORMATION:

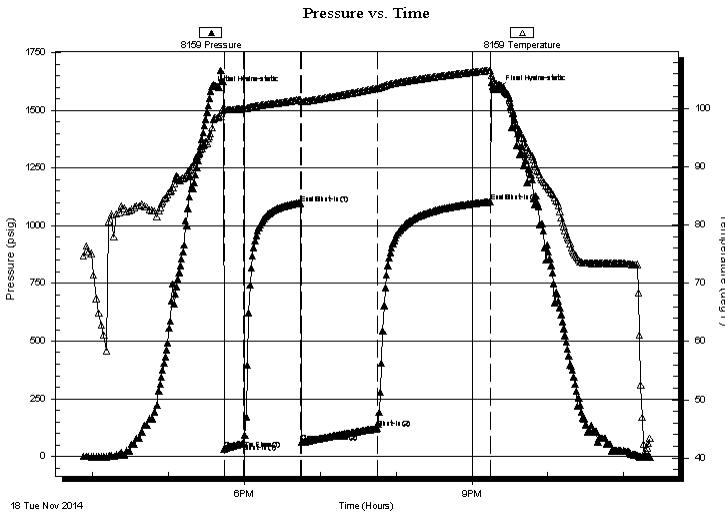
Formation: **Arbuckle**
 Deviated: No Whipstock: ft (KB)
 Time Tool Opened: 17:43:30
 Time Test Ended: 23:20:30
 Interval: **3392.00 ft (KB) To 3428.00 ft (KB) (TVD)**
 Total Depth: 3428.00 ft (KB) (TVD)
 Hole Diameter: 7.88 inches Hole Condition: Fair
 Test Type: Conventional Bottom Hole (Initial)
 Tester: Shane Konzem
 Unit No: S3/30/Great Bend
 Reference Elevations: 3222.00 ft (KB)
 3179.00 ft (CF)
 KB to GR/CF: 43.00 ft

Serial #: 8159 Outside

Press @ Run Depth: 1103.98 psig @ 3425.00 ft (KB) Capacity: 8000.00 psig
 Start Date: 2014.11.18 End Date: 2014.11.18 Last Calib.: 2014.11.19
 Start Time: 15:53:00 End Time: 23:21:00 Time On Btm: 2014.11.18 @ 17:33:30
 Time Off Btm: 2014.11.18 @ 21:21:00

TEST COMMENT: 1st Open/ 15 Minutes. Weak blow built to 3 1/2 inches into bucket of deisel.
 1st Shut In/ 45 Minutes. No blow back.
 2nd Open/ 60 Minutes. Fair blow built to bottom of 5 gallon bucket in 45 minutes.
 2nd Shut In/ 60 Minutes. No blow back.

PRESSURE SUMMARY



Time (Min.)	Pressure (psig)	Temp (deg F)	Annotation
0	1583.58	95.68	Initial Hydro-static
11	32.37	99.83	Open To Flow (1)
26	55.76	99.95	Shut-In(1)
71	1097.05	101.53	End Shut-In(1)
72	61.49	101.25	Open To Flow (2)
132	121.64	103.48	Shut-In(2)
221	1103.98	106.57	End Shut-In(2)
228	1589.55	104.08	Final Hydro-static

Recovery

Length (ft)	Description	Volume (bbl)
0.00	63 feet gas in pipe	0.00
315.00	100% clean gassy oil	1.70

Gas Rates

Choke (inches)	Pressure (psig)	Gas Rate (Mcf/d)



**TRILOBITE
TESTING, INC**

DRILL STEM TEST REPORT

FLUID SUMMARY

Shelby Resources, LLC.

15/18s/14w/Barton

2717 Canal BLVD
Suite C
Hays Ks, 67601
ATTN: Jeremy Schwartz

Wondra-Stoss #1-15

Job Ticket: 60410

DST#: 4

Test Start: 2014.11.18 @ 15:52:00

Mud and Cushion Information

Mud Type: Gel Chem
Mud Weight: 9.00 lb/gal
Viscosity: 49.00 sec/qt
Water Loss: 7.20 cm³
Resistivity: ohm.m
Salinity: 4400.00 ppm
Filter Cake: 2.00 inches

Cushion Type:
Cushion Length: ft
Cushion Volume: bbl
Gas Cushion Type:
Gas Cushion Pressure: psig

Oil API: 40 deg API
Water Salinity: ppm

Recovery Information

Recovery Table

Length ft	Description	Volume bbl
0.00	63 feet gas in pipe	0.000
315.00	100% clean gassy oil	1.699

Total Length: 315.00 ft Total Volume: 1.699 bbl

Num Fluid Samples: 0

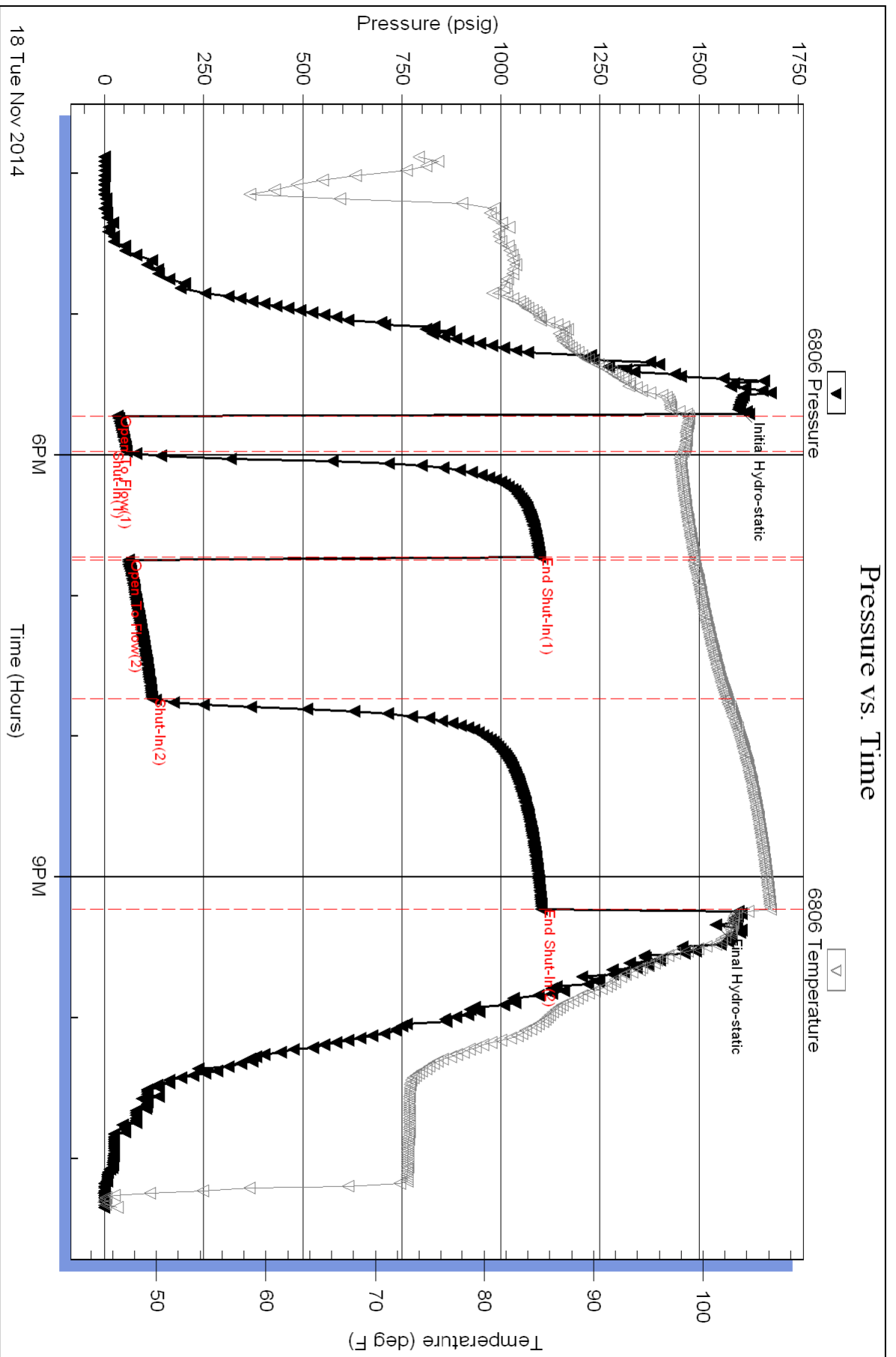
Num Gas Bombs: 0

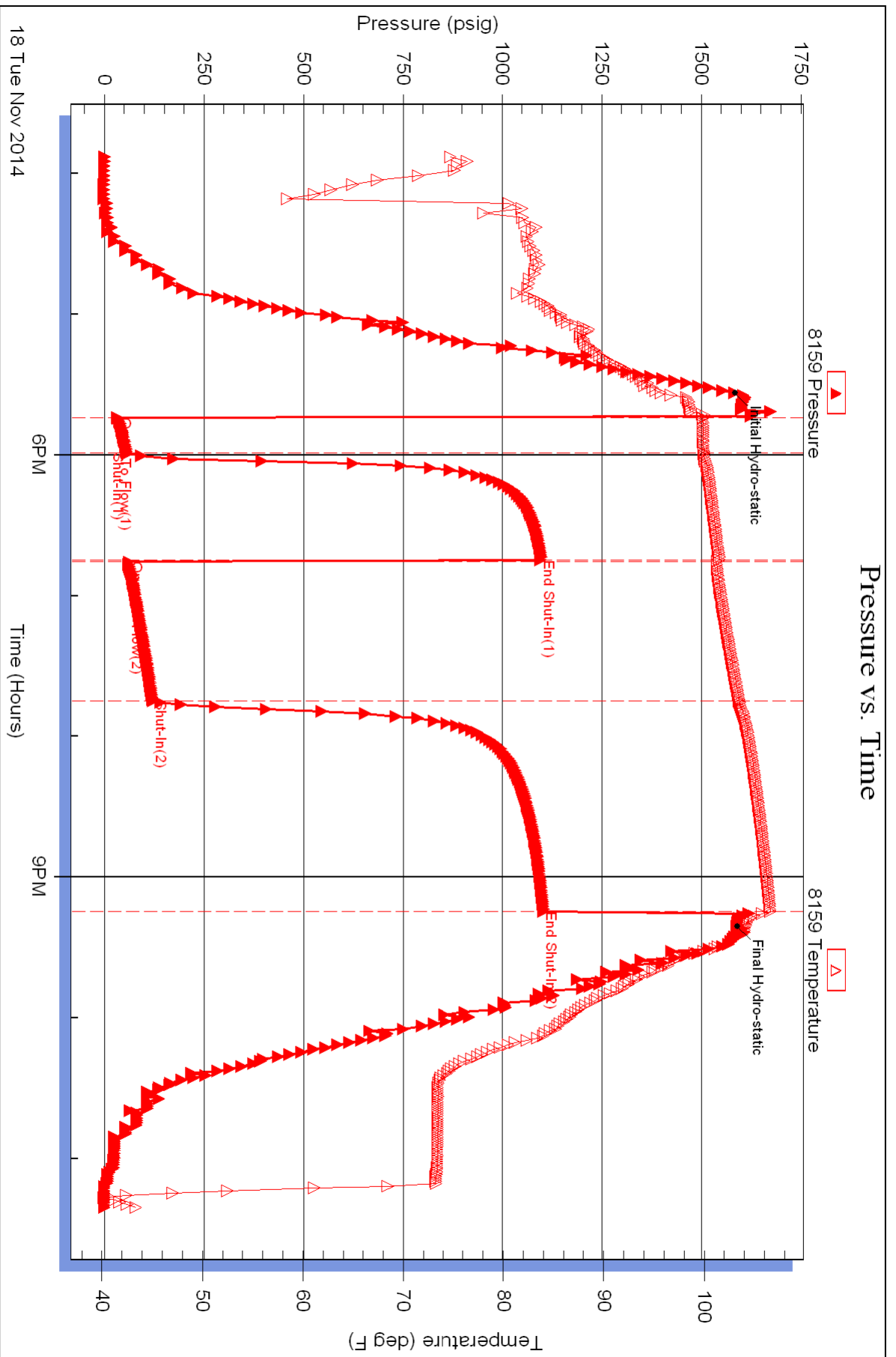
Serial #:

Laboratory Name:

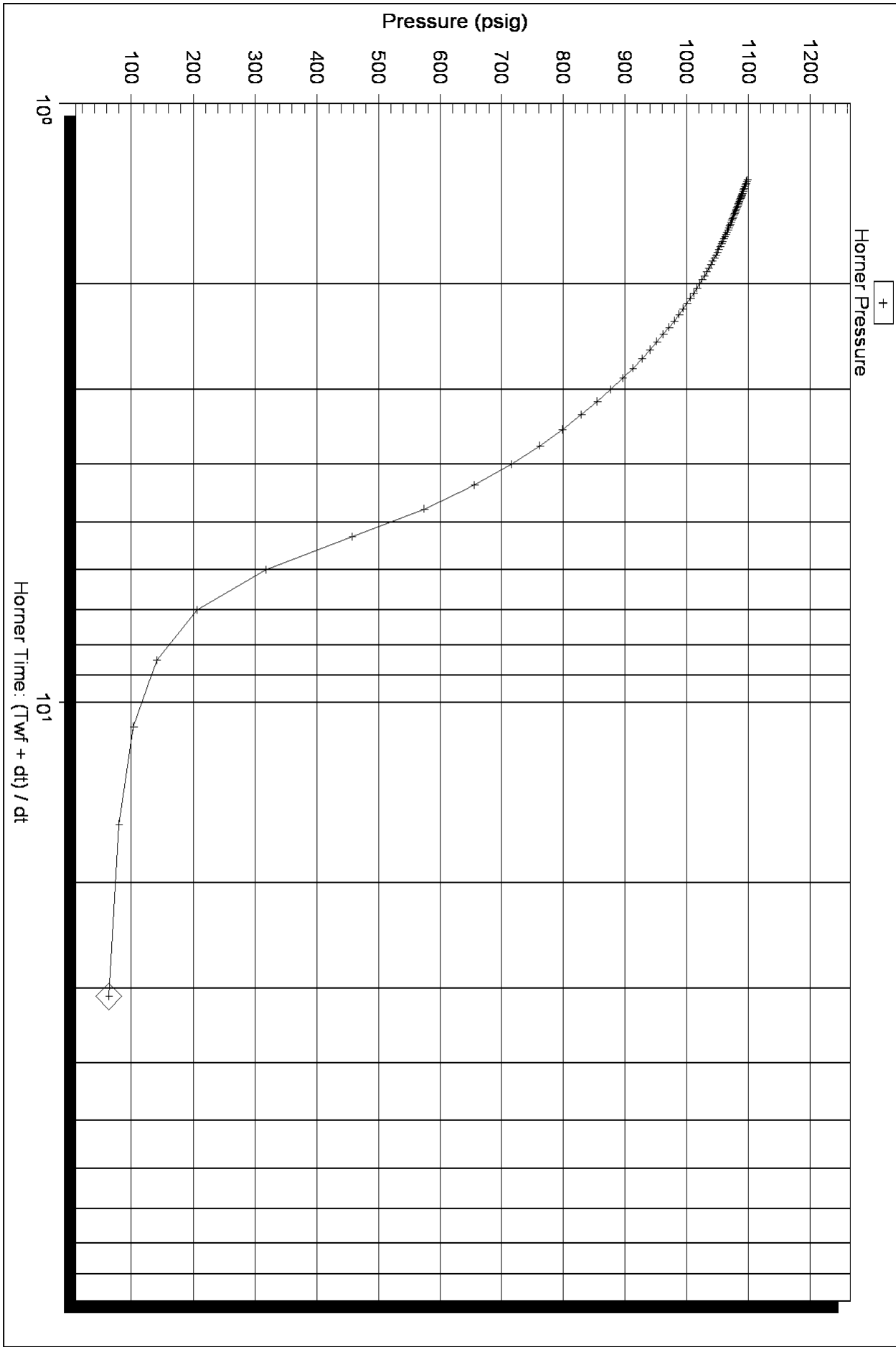
Laboratory Location:

Recovery Comments:





Horner Plot



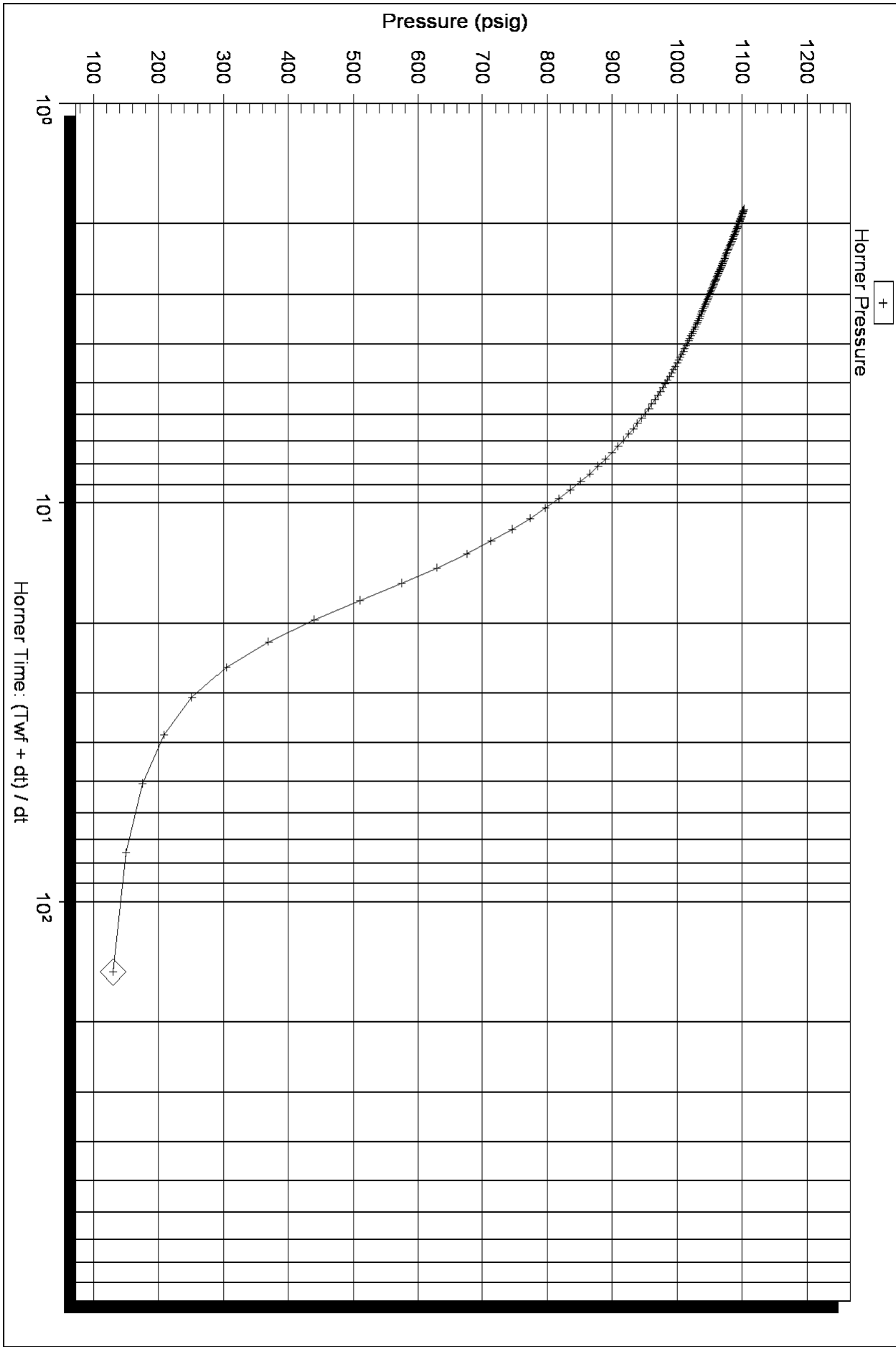
Serial Number: 6806 (Inside)

P* :

Slope (m) : kpa/log cycle

Flow Cycle: 1

Horner Plot



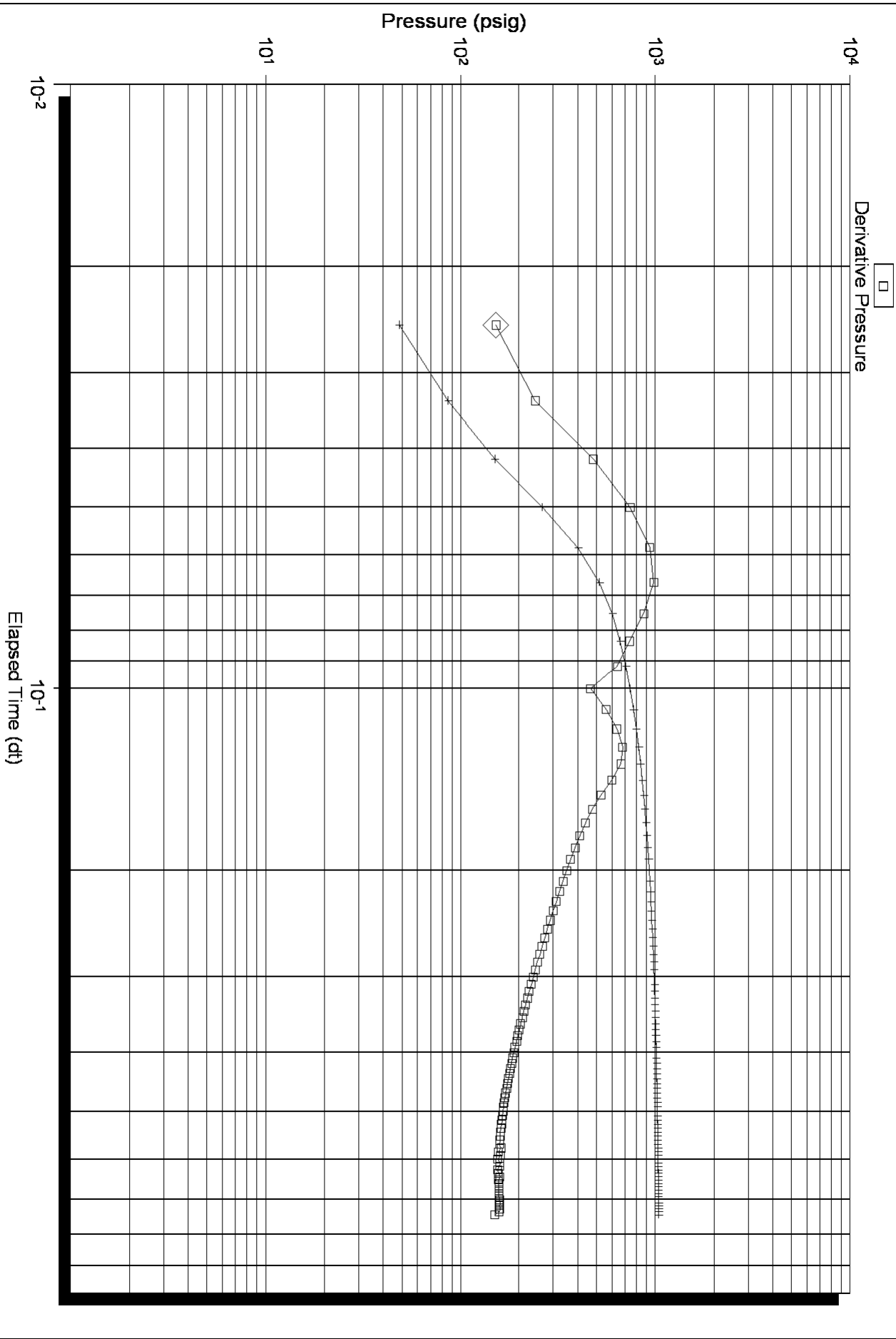
Serial Number: 6806 (Inside)

P* :

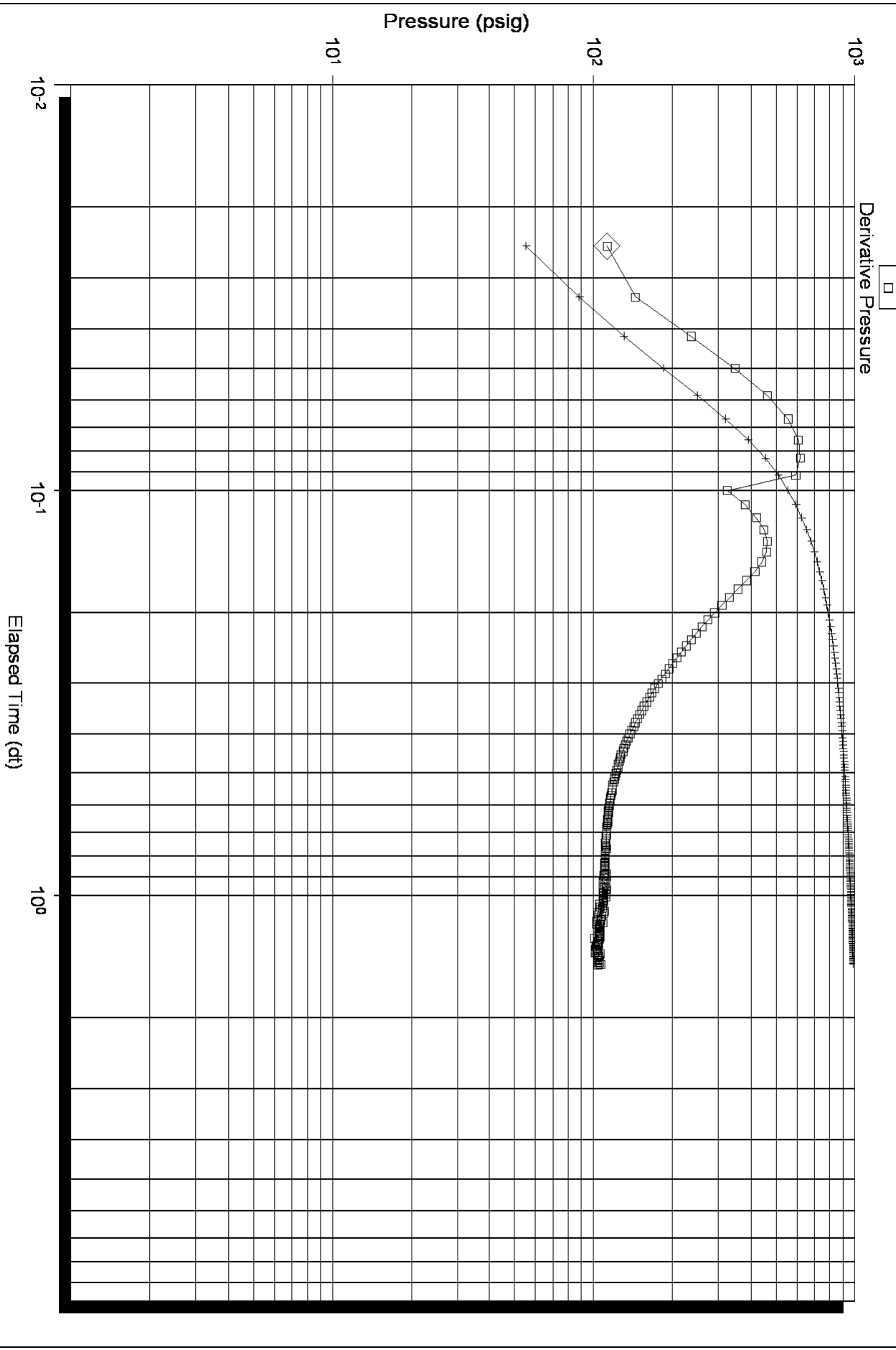
Slope (m) : kpa/log cycle

Flow Cycle: 2

Log-Log and Pseudo-Derivative



Log-Log and Pseudo-Derivative



Serial Number: 6806 (Inside)

Flow Cycle: 2