



Scale 1:240 Imperial

Well Name: Wondra Stoss Unit #1-15
 Surface Location: 2444'FSL, 1811'FWL, Sec. 15-18S-14W
 Bottom Location:
 API: 15-009-26041-0000
 License Number:
 Spud Date: 11/13/2014 Time: 8:15 AM
 Region: Barton County
 Drilling Completed: 11/20/2014 Time: 12:05 PM
 Surface Coordinates:
 Bottom Hole Coordinates:
 Ground Elevation: 1924.00ft
 K.B. Elevation: 1937.00ft
 Logged Interval: 3000.00ft To: 3500.00ft
 Total Depth: 3530.00ft
 Formation: Arbuckle
 Drilling Fluid Type: Chemical/Fresh Water Gel

OPERATOR

Company: Shelby Resources, LLC
 Address: 445 Union Blvd, Suite 208
 Lakewood, CO 80228
 Contact Geologist: Janine Sturdavant
 Contact Phone Nbr: 303-907-2209 / 720-274-4682
 Well Name: Wondra Stoss Unit #1-15
 Location: 2444'FSL, 1811'FWL, Sec. 15-18S-14W API: 15-009-26041-0000
 Pool: Field: Laud West
 State: Kansas Country: USA

LOGGED BY



Company: Shelby Resources, LLC
 Address: 445 UNION BLVD. Suite 208
 LAKEWOOD, CO. 80228
 Phone Nbr: 203-671-6034
 Logged By: Geologist Name: Jeremy Schwartz

NOTES

The Shelby Resources, LLC Wondra Stoss Unit #1-15 was drilled to a total depth of 3530', bottoming in the Arbuckle. A TookeDaq gas detector was employed in the drilling of said well.

Six DST's were conducted throughout the Lansing-Kansas City and Arbuckle Zones. The DST Reports can be found at the bottom of this log.

Due to DST Results, sample shows, gas kicks, and log analysis it was determined by all parties involved to further test the well through production casing. The dry samples were saved and will be available for further review at the Kansas Geological Society Well Sample Library, located in Wichita, KS.

Respectfully Submitted,
Jeremy Schwartz
Geologist

CONTRACTOR

Contractor: Sterling Drilling Co
 Rig #: 5
 Rig Type: mud rotary
 Spud Date: 11/13/2014 Time: 8:15 AM

Spud Date: 11/13/2014
 TD Date: 11/20/2014
 Rig Release:

Time: 8:15 AM
 Time: 12:05 PM
 Time:

ELEVATIONS

K.B. Elevation: 1937.00ft Ground Elevation: 1924.00ft
 K.B. to Ground: 13.00ft

DATE	DEPTH	ACTIVITY
Saturday, November 15, 2014	3100'	Geologist Jeremy Schwartz on location @ 2330hrs, ~3100', DRLG ahead through Heebner
Sunday, November 16, 2014	3115'	DRLG ahead through Douglas Shale, Brown Lime, CFS @ 3180, Conduct Bit Trip,
	3180'	DRLG ahead through Lansing, CFS @ 3222', Conduct DST #1 in the Lansing "A-B",
	3222'	Successful Test, Resume DRLG ahead through Lansing "G",
Monday, November 17, 2014	3250'	DRLG ahead through Muncie Creek, Lansing "H", CFS @ 3330', Conduct DST #2 in the
	3330'	Lansing "H", Successful Test, Resume DRLG ahead through Lansing, CFS @ 3405',
	3405'	Conduct DST #3 in the Lansing "I-K",
Tuesday, November 18, 2014	3405'	Successful Test, Resume DRLG, CFS @ 3420', Resume DRLG, CFS @ 3428',
	3428'	Conduct DST #4 in the Arbuckle,
Wednesday, November 19, 2014	3428'	Successful Test, DRLG ahead, CFS @ 3435', Conduct DST #5 in the Arbuckle,
	3435'	Successful Test, DRLG ahead, CFS @ 3444', Conduct DST #6 in the Arbuckle,
Thursday, November 20, 2014	3444'	Successful Test, DRLG ahead to TD, TD of 3530' reached @ 1205hrs, Conduct Logging
	3530'	Operations, Logging Operations complete @ 2030hrs,
	3530'	Geologist Jeremy Schwartz off location @ 2200hrs

CLIENT:	SHELBY RESOURCES, LLC
WELL NAME:	WONDRA STOSS UNIT #1 -15
LEGAL:	NE NW NE SW 15-185-14W
COUNTY:	BARTON
API:	15-009-26041-0000
DRLG CONTRACTOR:	STERLING DRILLING CO.
RIG #:	5
DOGHOUSE #:	620-388-5433
TOOLPUSHER:	ALAN LOFTIS
CELL #:	620-388-2736




WONDRA STOSS UNIT #1 -15				SW SE NW SW 15-185-14W				SW NE NE NE 21-185-14W				E/2 NE NW 15-185-14W				
KB		1937		KB		1942		KB		1931		KB		1931		
LOG TOPS		SAMPLE TOPS		COMP. CARD		LOG		SMPL.		COMP. CARD		LOG		SMPL.		
FORMATION	DEPTH	DATUM	DEPTH	DATUM	DEPTH	DATUM	CORR.	CORR.	DEPTH	DATUM	CORR.	CORR.	DEPTH	DATUM	CORR.	CORR.
ANHYDRITE TOP	874	1063	877	1060	886	1056	+ 7	+ 4	884	1047	+ 16	+ 13				
BASE	898	1039	904	1033	912	1030	+ 9	+ 3	908	1023	+ 16	+ 10				
TOPEKA	2888	-951	2893	-956	2900	-958	+ 7	+ 2	2902	-971	+ 20	+ 15	2876	-945	- 6	- 11
HEEBNER SHALE	3104	-1167	3104	-1167	3115	-1173	+ 6	+ 6	3116	-1185	+ 18	+ 18	3097	-1166	- 1	- 1
TORONTO	3112	-1175	3113	-1176	3123	-1181	+ 6	+ 5	3126	-1195	+ 20	+ 19	3108	-1177	+ 2	+ 1
DOUGLAS SHALE	3124	-1187	3125	-1188	3135	-1193	+ 6	+ 5	3139	-1208	+ 21	+ 20	3122	-1191	+ 4	+ 3
BROWN LIME	3177	-1240	3177	-1240	3188	-1246	+ 6	+ 6	3191	-1260	+ 20	+ 20	3175	-1244	+ 4	+ 4
LKC	3186	-1249	3185	-1248	3196	-1254	+ 5	+ 6	3202	-1271	+ 22	+ 23	3184	-1253	+ 4	+ 5
LKC G	3254	-1317	3256	-1319	3267	-1325	+ 8	+ 6	3271	-1340	+ 23	+ 21	3252	-1321	+ 4	+ 2
MUNCIE CREEK	3318	-1381	3316	-1379	3328	-1386	+ 5	+ 7	3328	-1397	+ 16	+ 18	3313	-1382	+ 1	+ 3
LKC H	3322	-1385	3320	-1383	3331	-1389	+ 4	+ 6	3331	-1400	+ 15	+ 17	3318	-1387	+ 2	+ 4
LKC J	3354	-1417	3358	-1421	3363	-1421	+ 4	+ 0	3363	-1432	+ 15	+ 11	3348	-1417	+ 0	- 4
STARK SHALE	3371	-1434	3374	-1437	3382	-1440	+ 6	+ 3	3378	-1447	+ 13	+ 10	3365	-1434	+ 0	- 3
BKC	3394	-1457	3396	-1459	3404	-1462	+ 5	+ 3	3405	-1474	+ 17	+ 15	3389	-1458	+ 1	- 1
CONGLOMERATE	3410	-1473	3406	-1469	3420	-1478	+ 5	+ 9	3409	-1478	+ 5	+ 9	3402	-1471	- 2	+ 2
ARBUCKLE	3420	-1483	3421	-1484	3439	-1497	+ 14	+ 13	3444	-1513	+ 30	+ 29	3417	-1486	+ 3	+ 2
RTD			3530	-1593	3507	-1565		- 28	3552	-1621		+ 28	3424	-1493		- 100
LTD	3531	-1594			3507	-1565	- 29						3430	-1499	- 95	

PROGNOSIS		
ANHYDRITE TOP	885	1052
HEEBNER SHALE	3100	-1163
LANSING	3180	-1243
LANSING H	3316	-1379
ARBUCKLE	3425	-1488
RTD	3500	-1563

TESTED	TESTED	TESTED
DST #1 (3315-3340) Lansing "H" 15-45-45-90 Strong Blow BOB 1MIN BB BOB, GTS throughout Strong Blow BOB 1MIN, GTS 1MIN 2844' CO, 120' OCM (50%/50%M) SIP: 1066-1064	DST #1 (3210 - 3258) LKC A-D TIMES: 30-30-30-30 BLOW: 1ST OPEN WEAK - DEAD 12MIN 2ND OPEN NO BLOW 15' OIL SPECKLED DRILLING MUD ISIP: 887, FSIP: 648	DST #1 (3175-3242) 70' SP GSY M BHP 183-174#/30" FP 64-82#
DST #2 (3347-3420) Lansing "I-K" 10-45-10 Very Weak Surface No BB Blow Died, flush tool, pull test 1' OCM (95%M/5%O)	DST #2 (3252 - 3275) LKC D-G TIMES: 30-30-30-30 BLOW: 1ST OPEN WEAK 2ND OPEN VERY WEAK 200' SLMCW (5%M, 95%W) ISIP: 953, FSIP: 947	DST #2 (3300-3341) 15'M BHP 59-59#/30" FP 55-55#
DST #3 (3404-3451) Arbuckle 15-45-45-60 Weak Blow Built to 4IN	DST #3 (3322 - 3404) LKC H-L TIMES: 30-45-45-60 BLOW: 1ST OPEN STRONG, BOB 1MIN, GTS 25MIN	DST #3 (3396-3420) 190' O & GCM, 300'MO BHP 631-512#/30" FP 55-238

No BB Weak Blow Built to 10IN No BB 330' MW	2ND OPEN STRONG, BOB 1MIN, GTS THROUGHOUT 1300' GO (25%G, 75%O) ISIP: 673, FSIP: 651 DST #4 (3400 - 3450) ARBUCKLE TIMES: 30-45-45-60 BLOW: 1ST OPEN STRONG, BOB 1MIN 2ND OPEN STRONG, BOB 2MIN 2400' GO, 10%G, 90%O ISIP: 1077, FSIP: 1068
--	--

ROCK TYPES

 Congl	 Lmst fw<7	 Carbon Sh
 Dolprim	 shale, gry	 shale, red

ACCESSORIES


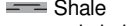

MINERAL

P Pyrite

FOSSIL

∩ Bioclastic or Fragmental
 F Fossils < 20%

STRINGER

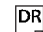








~~~~ Chert  
 Limestone  
 Shale  
 red shale

#### TEXTURE

C Chalky

### OTHER SYMBOLS

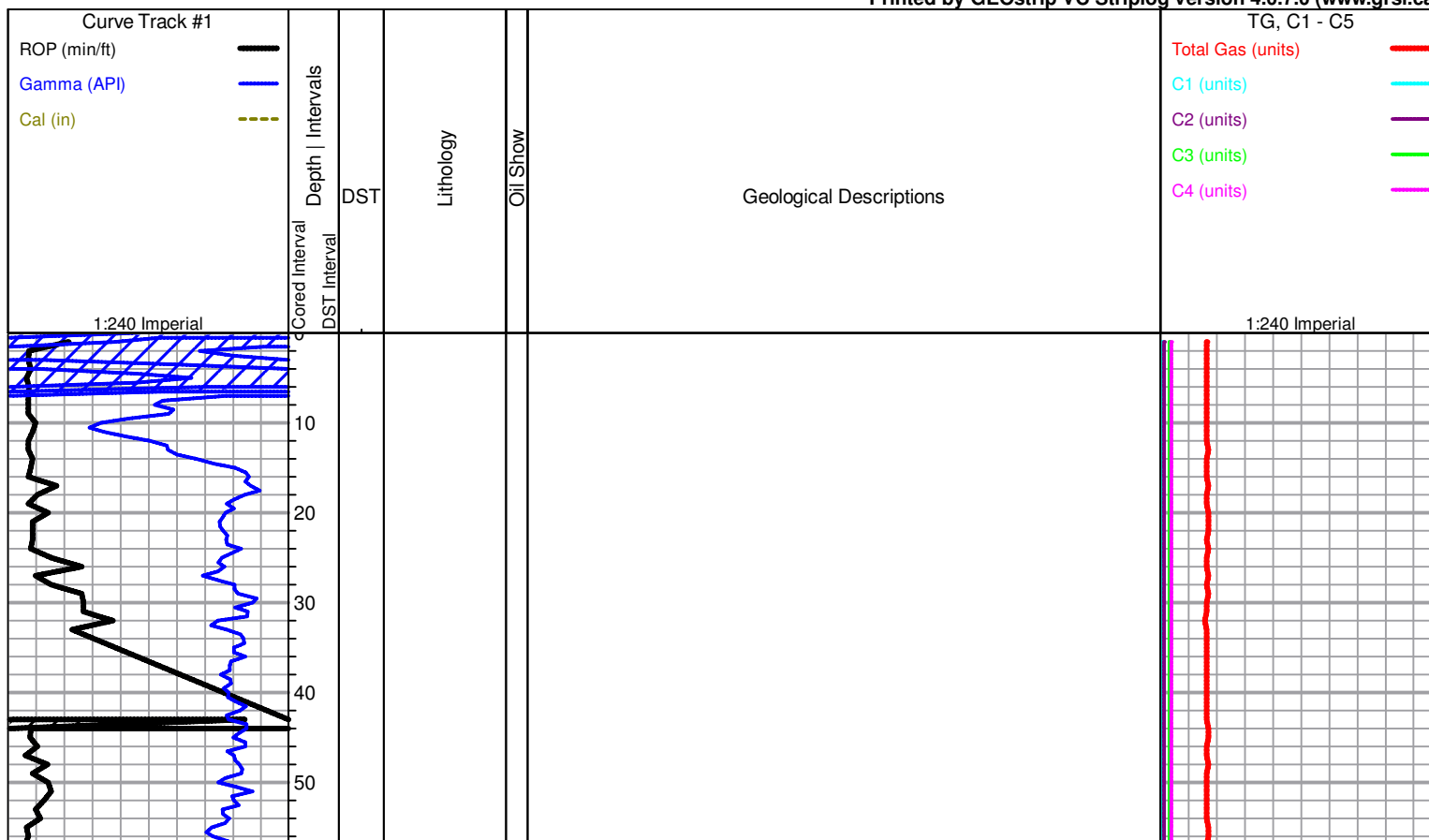
#### MISC

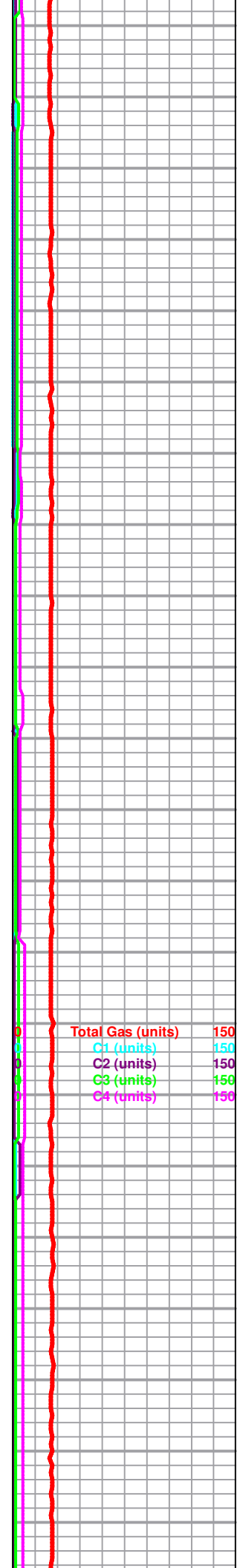
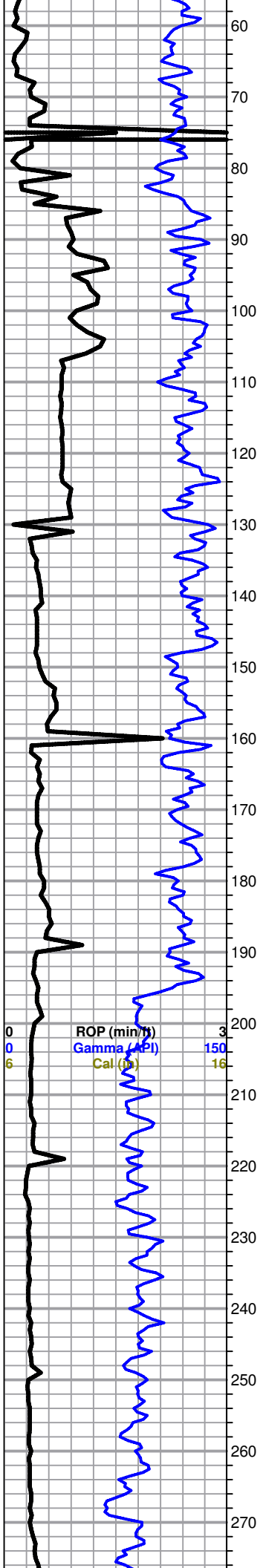
-  Daily Report
-  Digital Photo
-  Document
-  Folder
-  Link
-  Vertical Log File
-  Horizontal Log File
-  Core Log File
-  Drill Cuttings Rpt

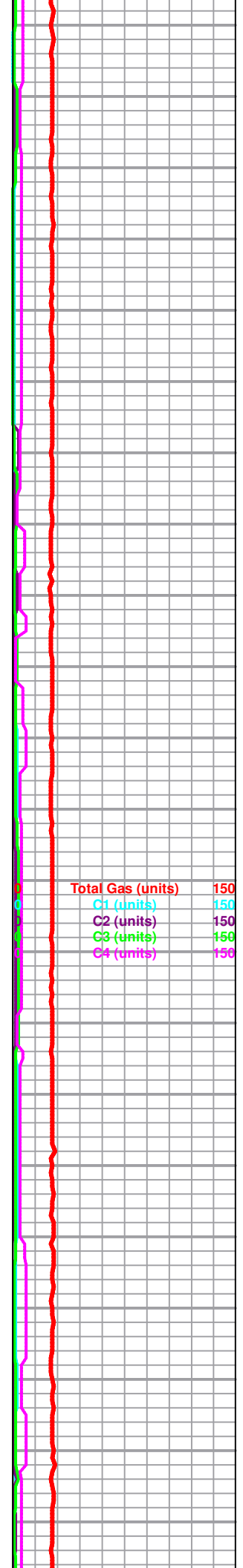
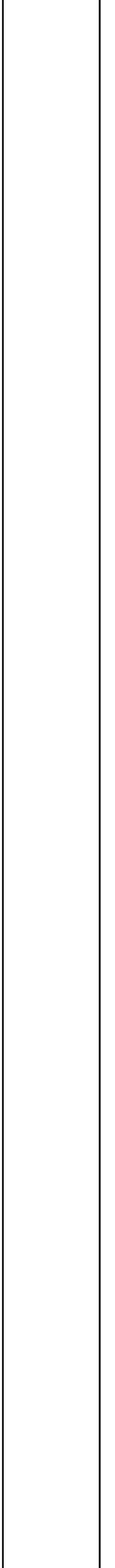
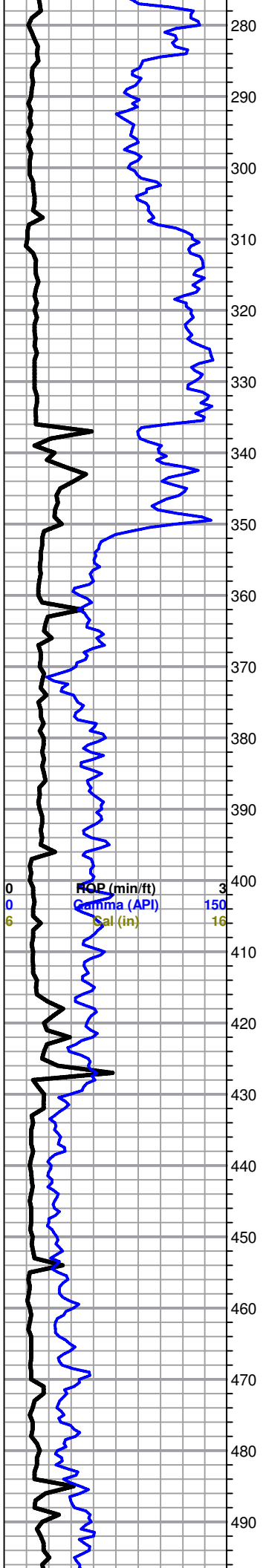
#### DST

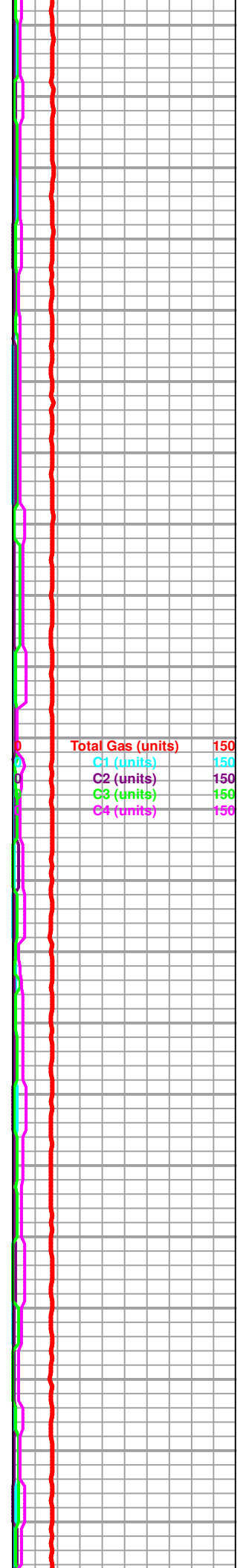
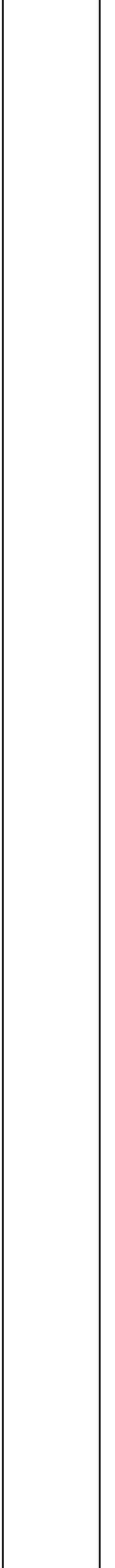
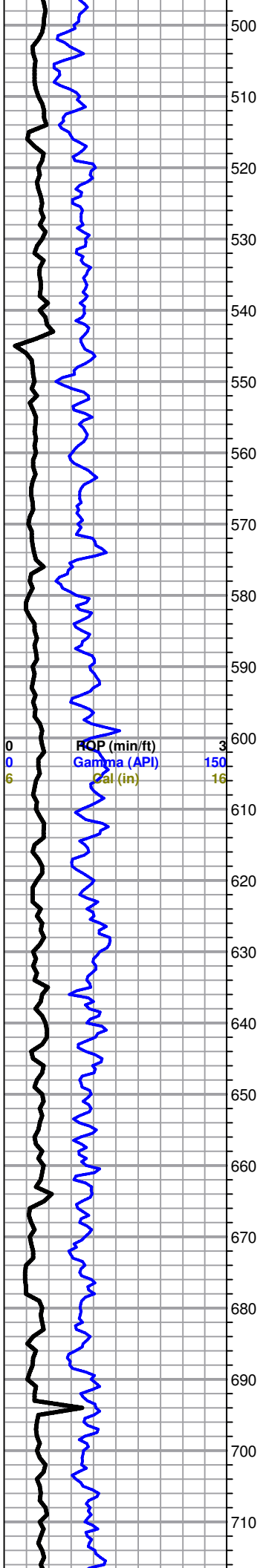
 DST Int  
 DST alt

Printed by GEOstrip VC Striplog version 4.0.7.0 (www.grsi.ca)

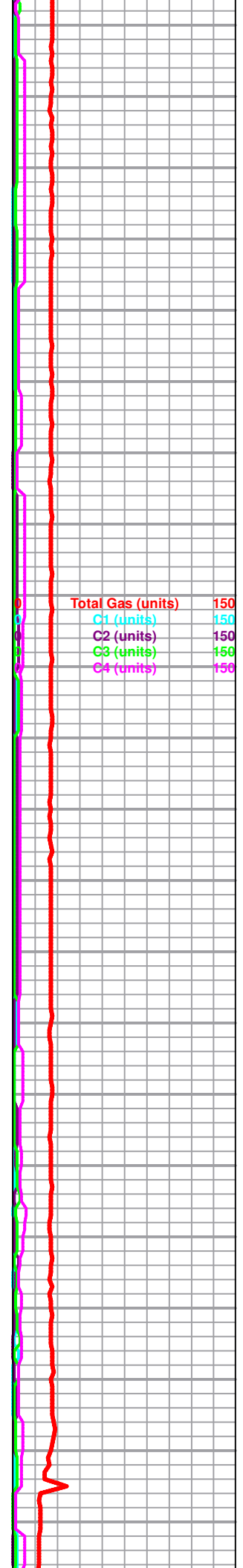
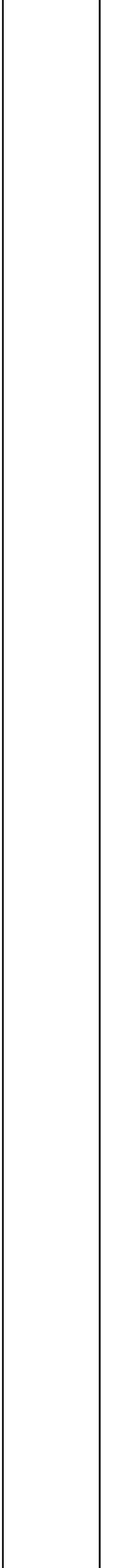
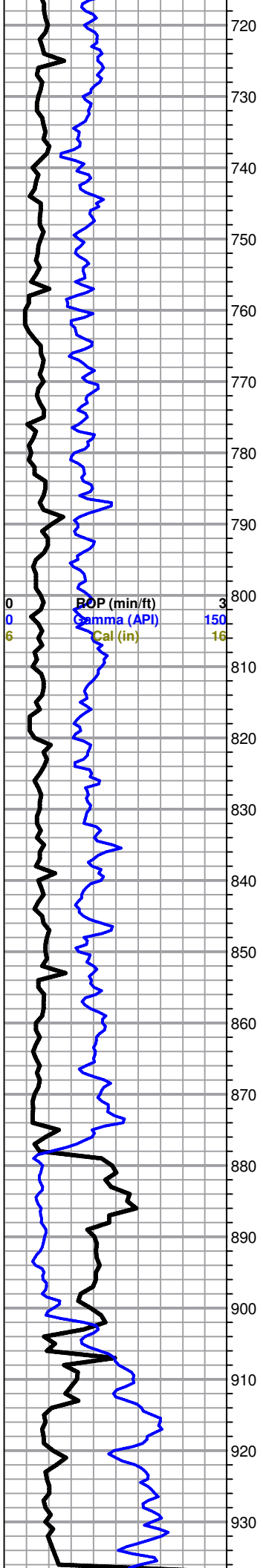


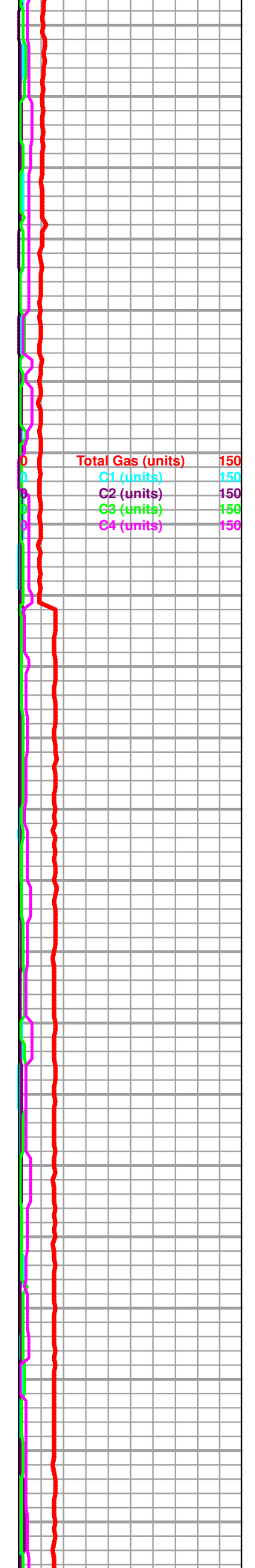
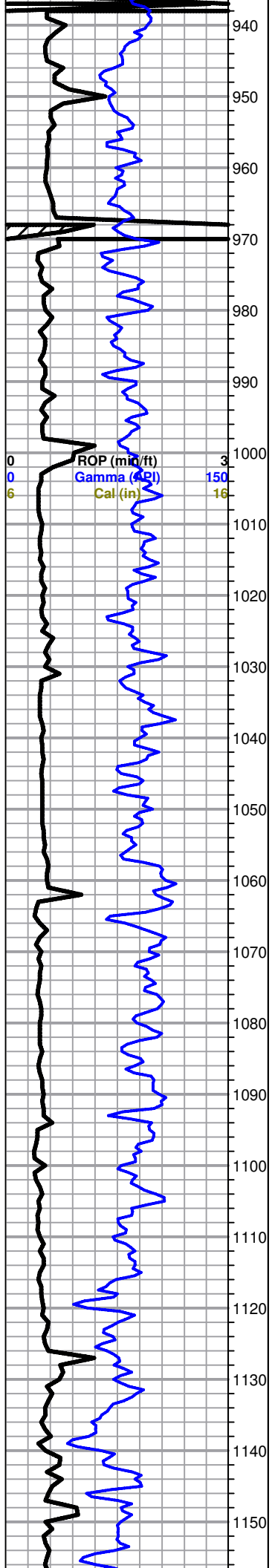




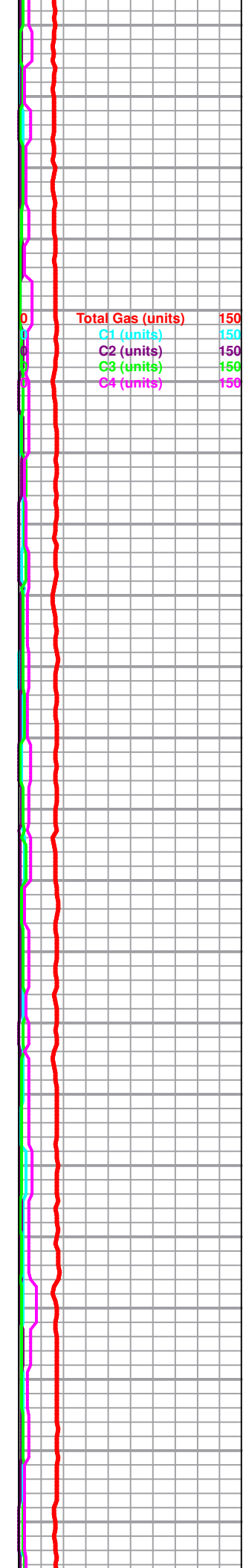
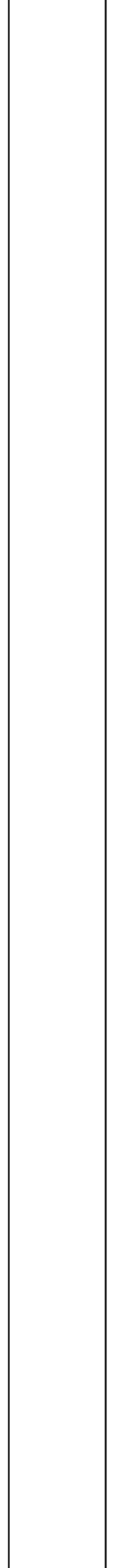
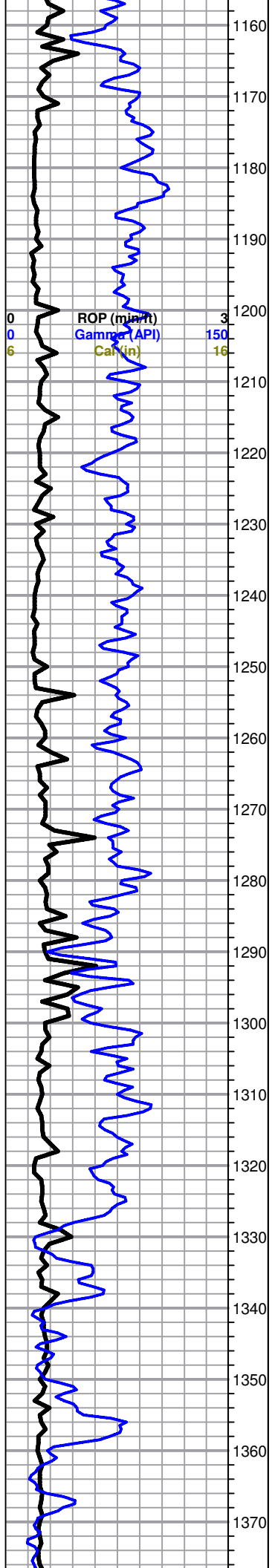


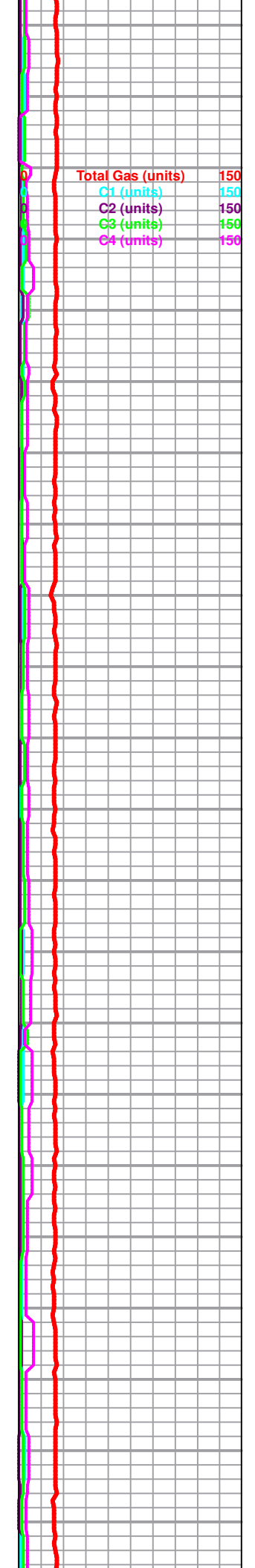
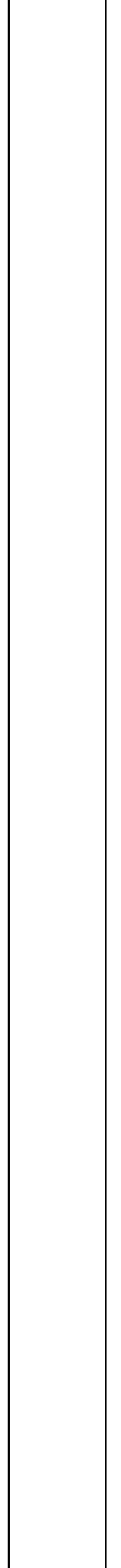
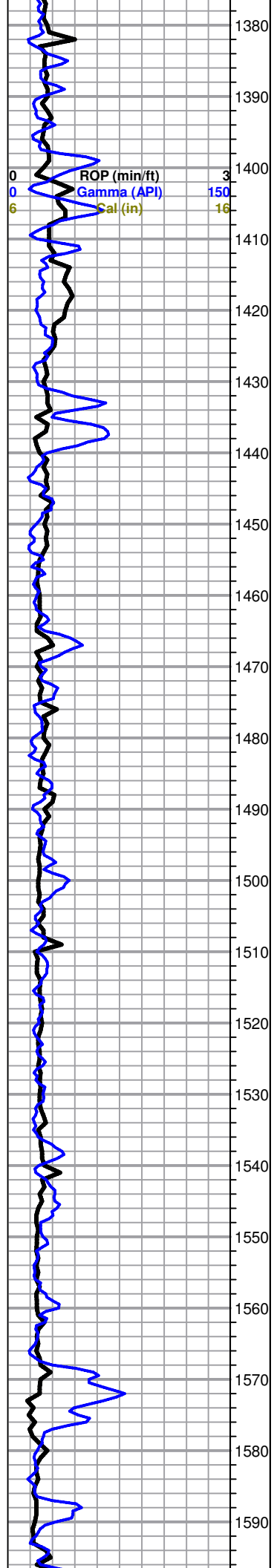


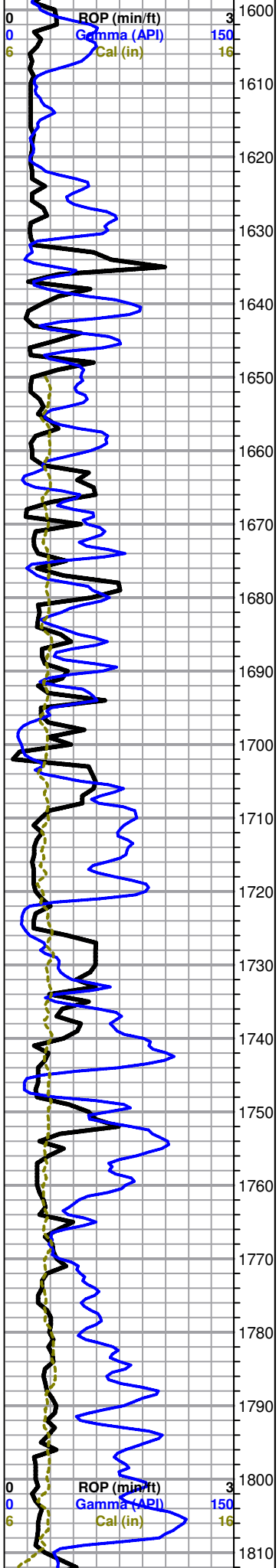






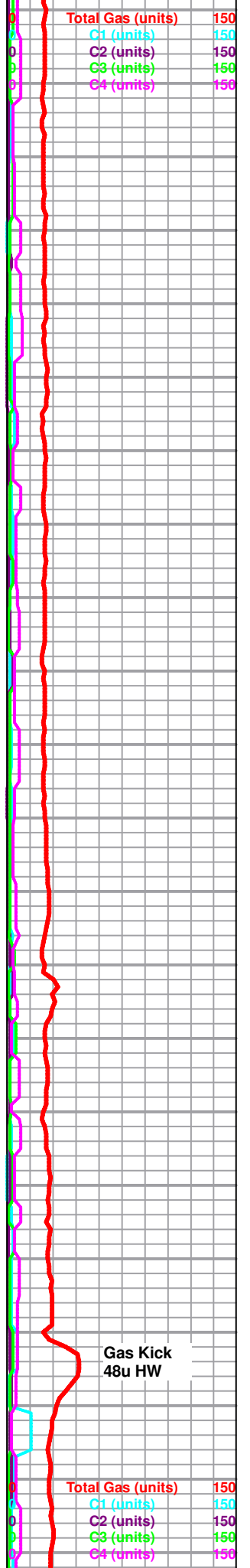




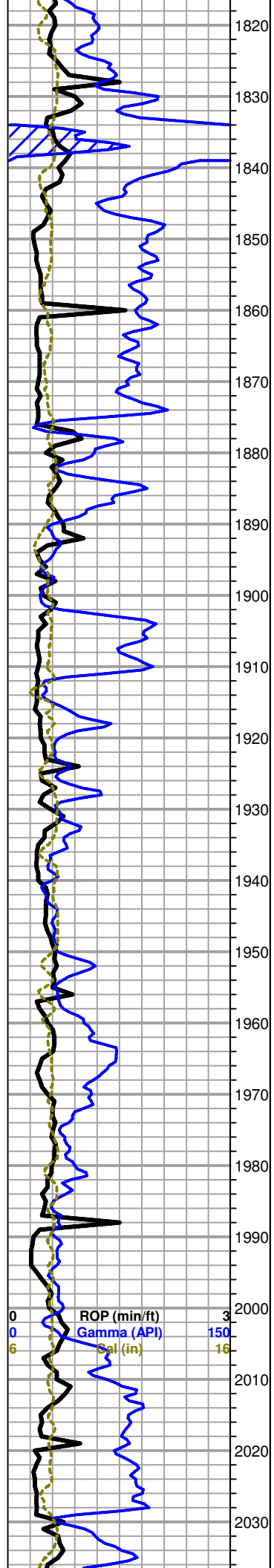


Chase 1764 (173)

Winfield 1810 (127)



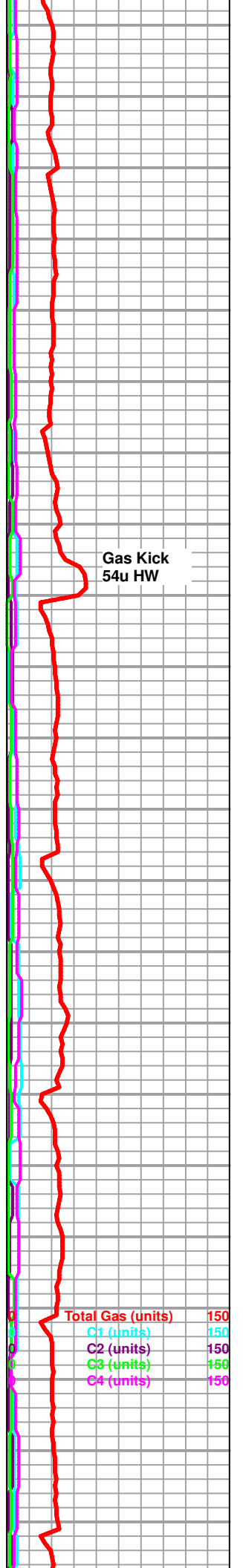
Gas Kick  
48u HW



Towanda 1876 (61)

FT. Riley 1910 (27)

Base Florence 2013 (-76)



Gas Kick  
54u HW

Total Gas (units) 150  
 C1 (units) 150  
 C2 (units) 150  
 C3 (units) 150  
 C4 (units) 150

2040  
2050  
2060  
2070  
2080  
2090  
2100  
2110  
2120  
2130  
2140  
2150  
2160  
2170  
2180  
2190  
2200  
2210  
2220  
2230  
2240  
2250

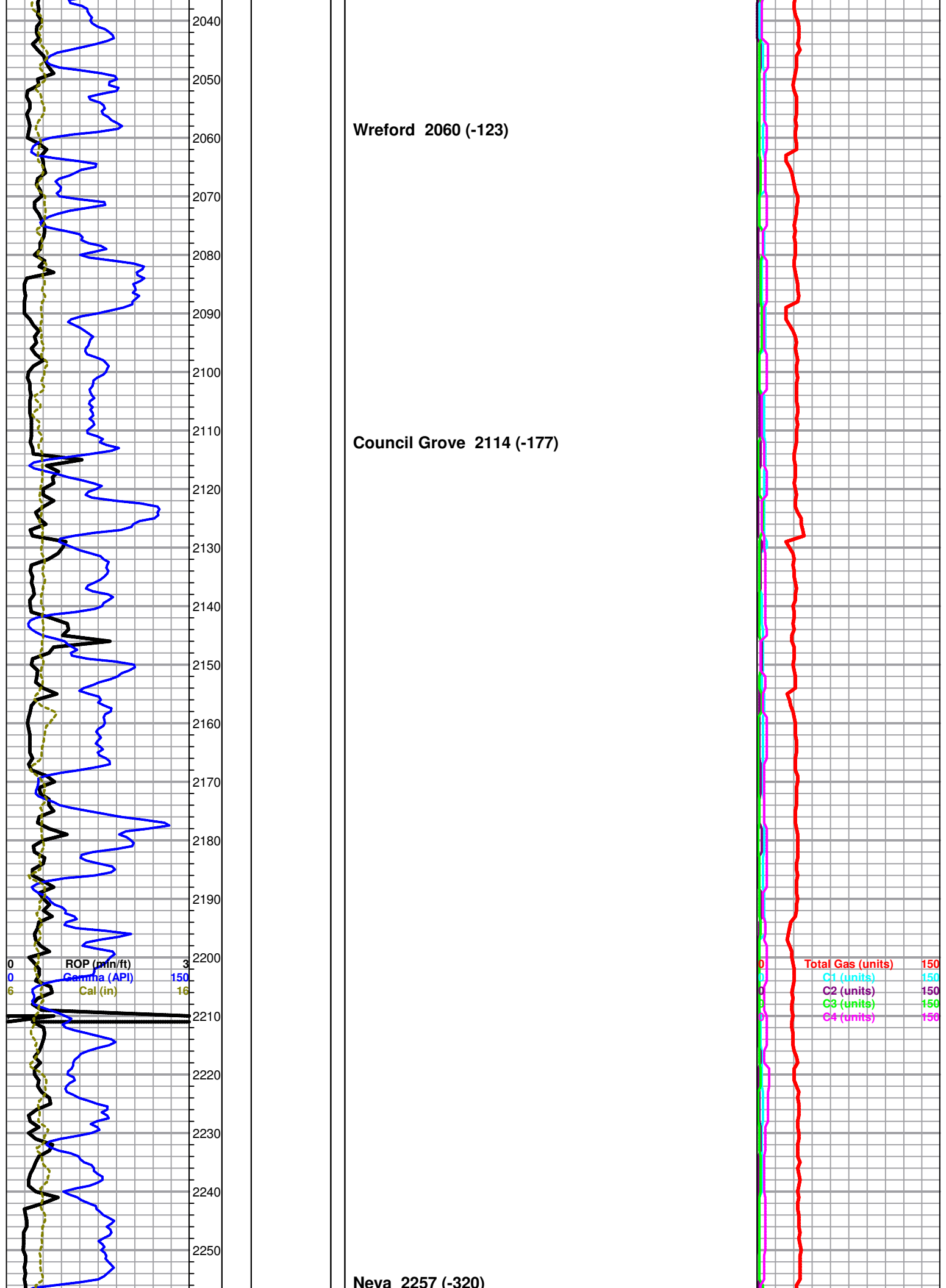
Wreford 2060 (-123)

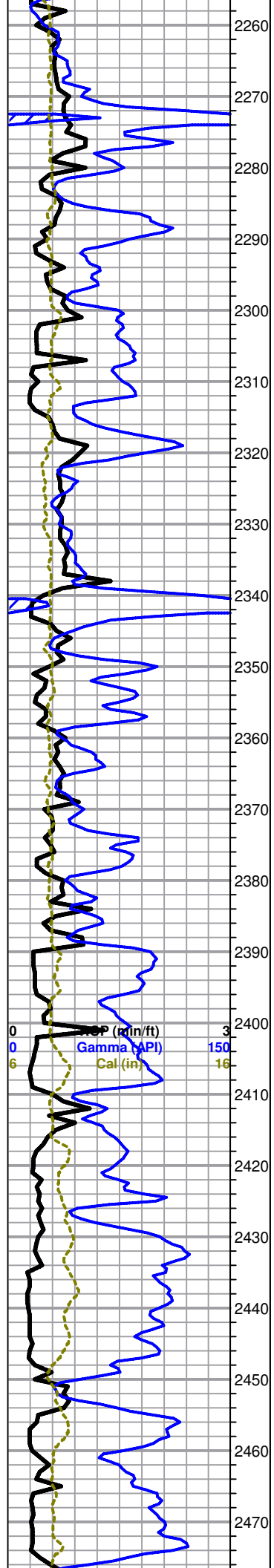
Council Grove 2114 (-177)

Neva 2257 (-320)

ROP (min/ft) 3  
Gamma (API) 150  
Cal (in) 16

Total Gas (units) 150  
C1 (units) 150  
C2 (units) 150  
C3 (units) 150  
C4 (units) 150





Red Eagle 2318 (-381)

Janesville Shale 2390 (-453)

Wabaunsee 2476 (-539)

Gas Kick  
63u HW

|                   |     |
|-------------------|-----|
| Total Gas (units) | 150 |
| C1 (units)        | 150 |
| C2 (units)        | 150 |
| C3 (units)        | 150 |
| C4 (units)        | 150 |

2480  
2490  
2500  
2510  
2520  
2530  
2540  
2550  
2560  
2570  
2580  
2590  
2600  
2610  
2620  
2630  
2640  
2650  
2660  
2670  
2680  
2690

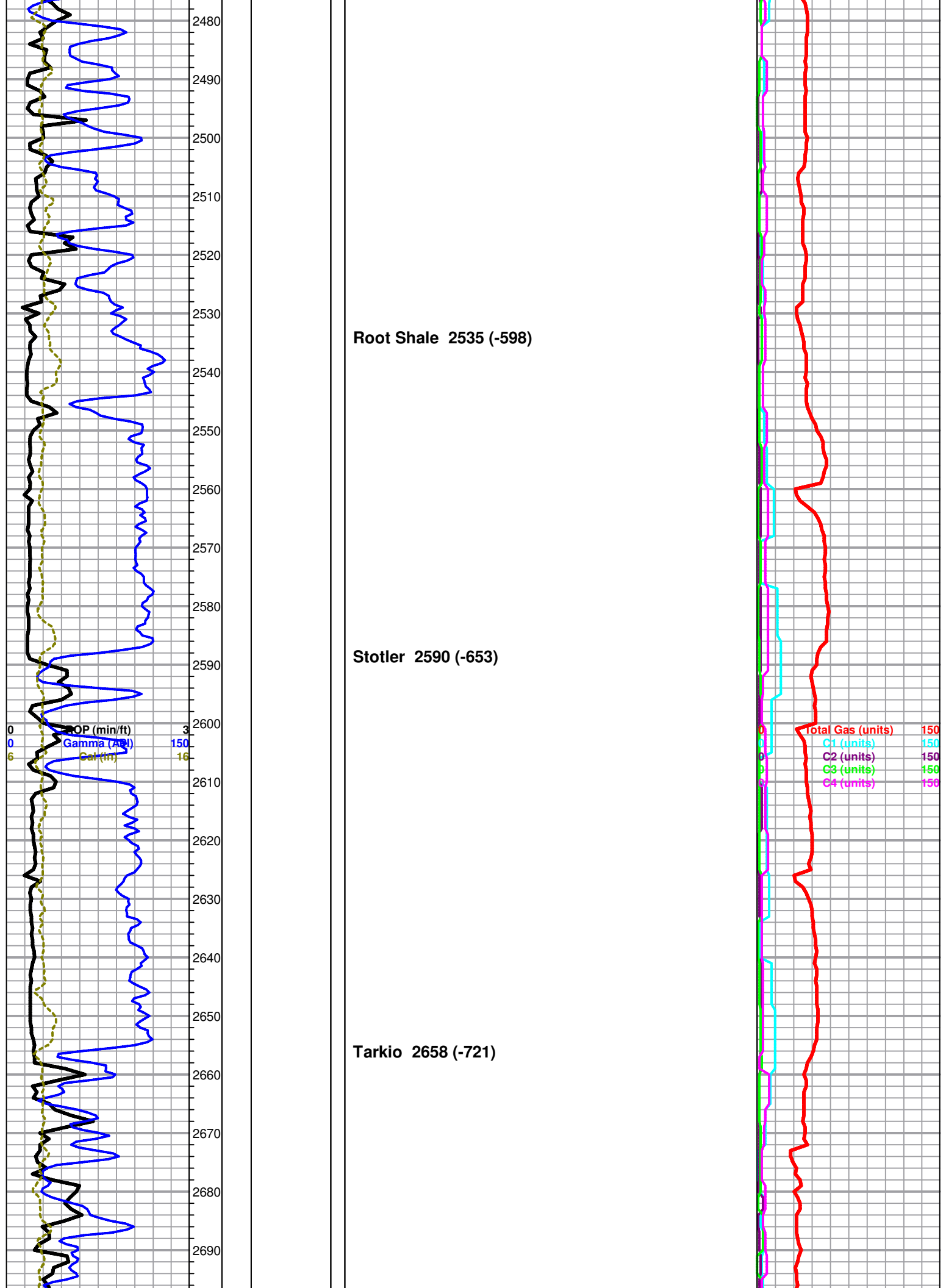
Root Shale 2535 (-598)

Stotler 2590 (-653)

Tarkio 2658 (-721)

OP (min/ft) 3  
Gamma (API) 150  
Cal (in) 16

Total Gas (units) 150  
C1 (units) 150  
C2 (units) 150  
C3 (units) 150  
C4 (units) 150





2700  
2710  
2720  
2730  
2740  
2750  
2760  
2770  
2780  
2790  
2800  
2810  
2820  
2830  
2840  
2850  
2860  
2870  
2880  
2890  
2900  
2910

**Bern 2730 (-793)**

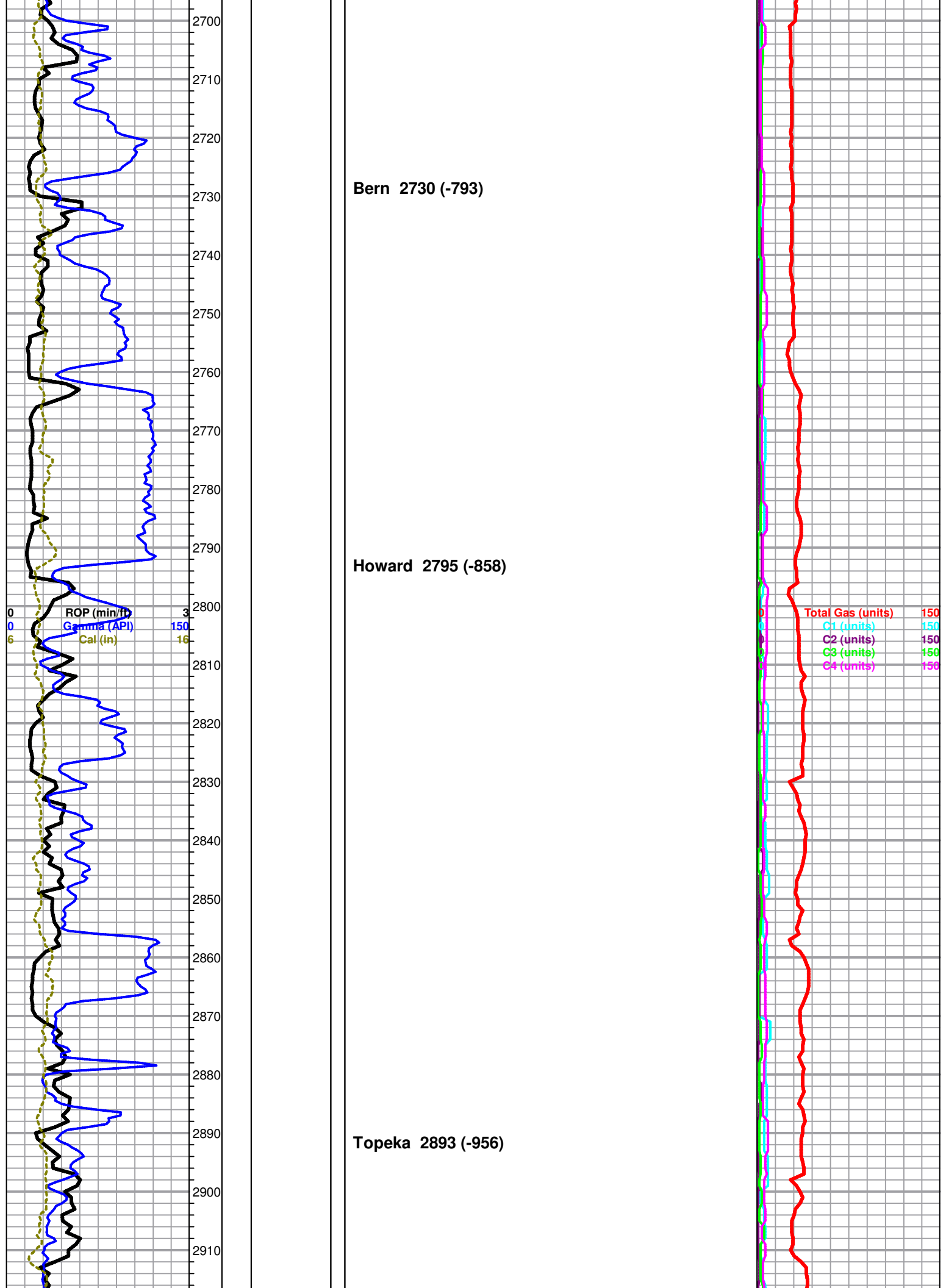
**Howard 2795 (-858)**

**Topeka 2893 (-956)**

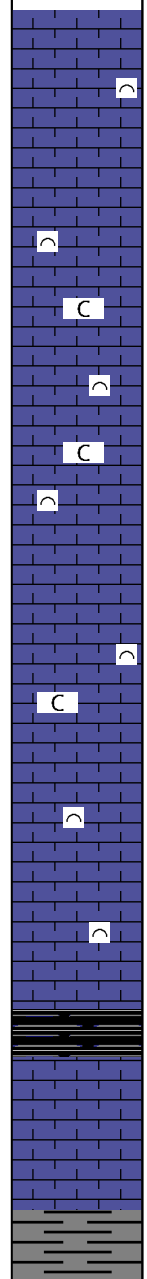
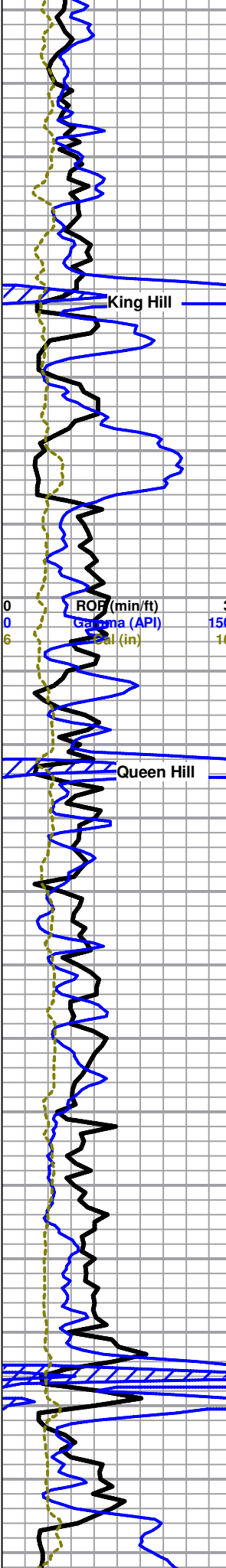
ROP (min/ft) 3  
Gamma (API) 150  
Cal (in) 16

0  
6

Total Gas (units) 150  
C1 (units) 150  
C2 (units) 150  
C3 (units) 150  
C4 (units) 150



2920  
2930  
2940  
2950  
2960  
2970  
2980  
2990  
3000  
3010  
3020  
3030  
3040  
3050  
3060  
3070  
3080  
3090  
3100  
3110  
3120  
3130



**Logged By Jeremy Schwartz**

LS, gray to cream, micro-xln, fossiliferous and dense with poor visible porosity, no show or odor

As above, chalky, no show or odor

LS, cream to gray, micro-xln, mostly fossiliferous, some lithographic, dense with poor visible porosity, no show or odor

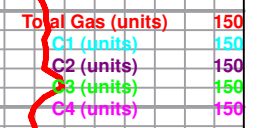
As above, no show or odor

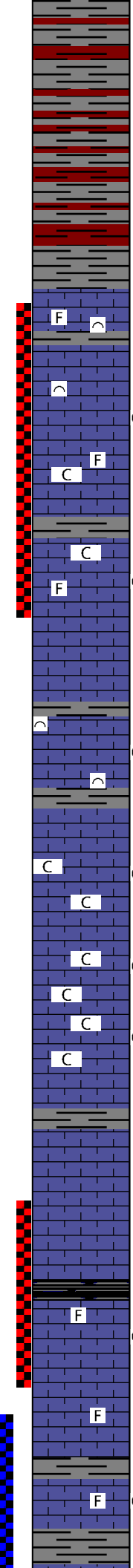
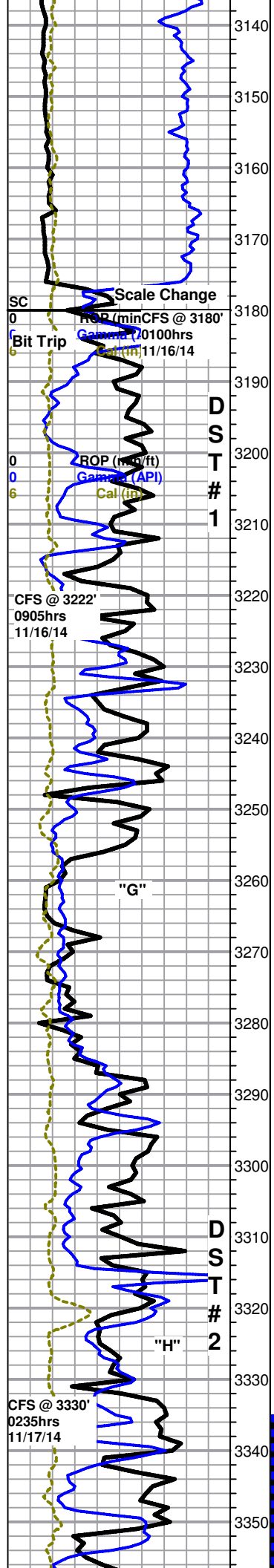
LS, cream to gray, micro-xln, mostly fossiliferous, some lithographic, dense with poor visible porosity, no show or odor

**Heebner 3104 (-1167)**  
Shale, black carbonaceous

LS, cream to white, micro-crypto xln, dense with poor visible porosity, no show or odor

**Douglas 3125 (-1188)**  
Shale, mostly gray with some red, some silty, soft and waxy





Shale as above

**Brown Lime 3177 (-1240)**

LS, brown, micro-xln, fossiliferous and dense with poor visible porosity, no show or odor

**Lansing 3185 (-1248)**

LS, mostly cream with some gray, micro-crypto xln, some fossiliferous, some lithographic, mostly barren and dense with poor visible porosity, some very scattered chips (~10-15%) with several small edge vugs and black stain in porosity, few chips (<5%) with fair vuggy edges to slightly vuggy porosity with black stain in porosity, VSSFO in tray, poor odor

LS, mostly cream with some gray, micro-crypto xln, mostly lithographic, some scattered slightly fossiliferous, dense with poor visible porosity, slightly chalky, no show or odor

As above, slightly chalky, no show or odor

Wondra Stoss Unit 1-15 dst1.jpg

3222' 20" LS, Cream with some gray, micro-crypto xln, lithographic with some slightly fossiliferous, mostly barren and dense with poor visible porosity, some scattered chips (~10-15%) oolitic to sub-oomoldic with some scattered poor to fair oomold porosity and brown to light golden brown stain in porosity, upon break chips have slight to fair show free oil and show some scattered fair visible porosity with slight show gas bubbles, VSSFO in tray, slightly chalky, poor odor

3222' 45" Mostly same as above with slightly less shows, NSFO, poor odor  
 LS, cream to gray, micro-crypto xln, some lithographic, some fossiliferous, dense with poor visible porosity, few chips (<5%) with several small very scattered edge vugs and black stain in porosity, overall poor visible porosity, NSFO, poor odor

LS, cream, micro-xln, some lithographic, some oomoldic with poor to fair oomold porosity with brown to black stain mostly confined to oomolds but partly in matrix around oomolds in few chips, fair show free oil in tray, very chalky, good odor

LS as above, with shows appearing to be dropping out, mostly barren, very chalky, SSFO, fair odor

LS, cream, micro-xln, some lithographic mixed with some oolitic to sub-oomoldic with some scattered oomoldic, dense with poor visible porosity, mostly barren, few chips with very scattered brown to black stain in few oomolds, SSFO in tray, very chalky with heavy chalky wash, fair odor

LS, gray to cream with some brown, micro-crypto xln, mostly lithographic and dense with poor visible porosity, some very scattered sub-oomoldic with poor visible porosity, NSFO, no odor

As above, no show or odor

**Muncie Creek 3316 (-1379)**

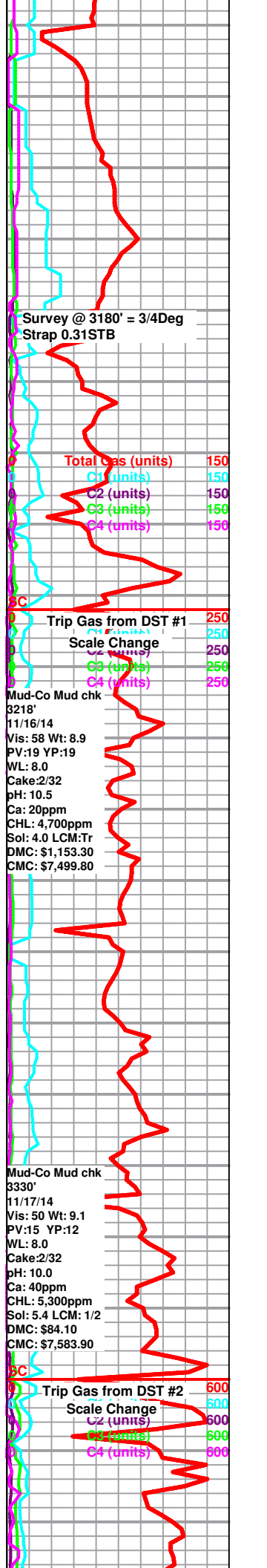
3330' 30" LS, cream to gray with some brown, micro-xln, some lithographic, some slightly fossiliferous, mostly dense with poor visible porosity, barren, some scattered sub-oomoldic to oomoldic, few chips with scattered poor to fair oomold porosity to slightly vuggy edges with scattered light golden brown to brown stain mostly in porosity and partly in matrix around oomolds, when agitated or broken chips have slight show free oil, SSFO in tray, slightly chalky, fair odor

3330' 60" Mostly same as above with slightly less shows, VSSFO in tray, slightly chalky, fair odor

Wondra Stoss Unit 1-15 dst2.jpg

Wondra Stoss Unit 1-15 dst3.jpg

~ 3340' LS, cream, micro-xln, some lithographic, some slightly fossiliferous, mostly dense and barren with poor visible porosity, some scattered (~10%) with very scattered vf pinpoint porosity to very slightly vuggy edges with scattered brown to black stain that increases when left under lamp, upon break chips show scattered fair inter-xln porosity with brown to black stain and fair show gas bubbles with SSFO, found few small chips with fair vuggy porosity and saturated brown stain, SSFO in tray, fair odor



Survey @ 3180' = 3/4Deg Strap 0.31STB

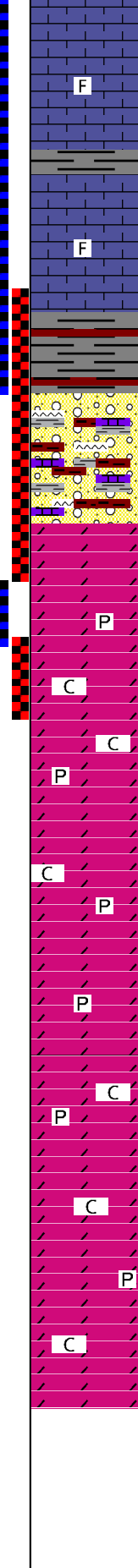
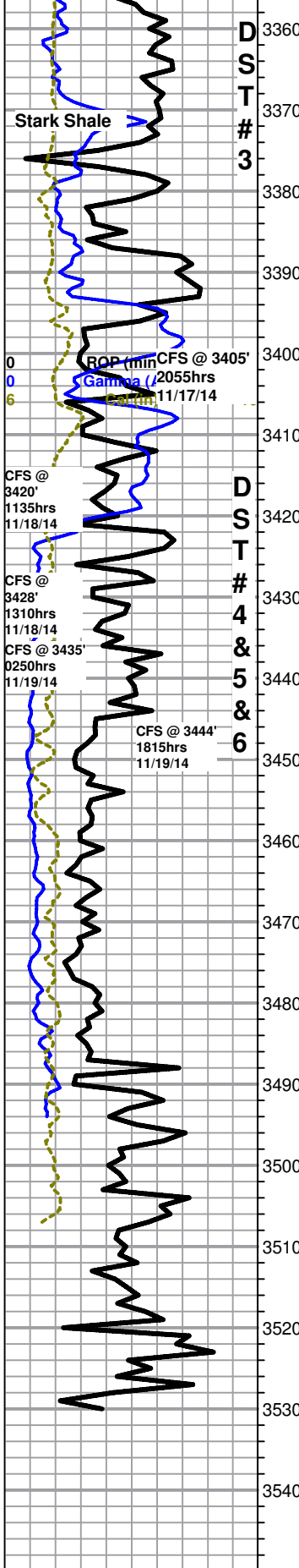
Total Gas (units) 150  
 C1 (units) 150  
 C2 (units) 150  
 C3 (units) 150  
 C4 (units) 150

Trip Gas from DST #1 250  
 Scale Change 250  
 C1 (units) 250  
 C2 (units) 250  
 C3 (units) 250  
 C4 (units) 250

Mud-Co Mud chk  
 3218'  
 11/16/14  
 Vis: 58 Wt: 8.9  
 PV:19 YP:19  
 WL: 8.0  
 Cake:2/32  
 pH: 10.5  
 Ca: 20ppm  
 CHL: 4,700ppm  
 Sol: 4.0 LCM:Tr  
 DMC: \$1,153.30  
 CMC: \$7,499.80

Mud-Co Mud chk  
 3330'  
 11/17/14  
 Vis: 50 Wt: 9.1  
 PV:15 YP:12  
 WL: 8.0  
 Cake:2/32  
 pH: 10.0  
 Ca: 40ppm  
 CHL: 5,300ppm  
 Sol: 5.4 LCM: 1/2  
 DMC: \$84.10  
 CMC: \$7,583.90

Trip Gas from DST #2 600  
 Scale Change 600  
 C1 (units) 600  
 C2 (units) 600  
 C3 (units) 600  
 C4 (units) 600



~3350-70' LS, cream to gray, micro-crypto xln, mostly lithographic, few chips (<10%) with several small edge vugs and black stain in porosity, dense with overall poor visible porosity, also with few chips (<10%) sub-oolitic with few scattered small vugs and scattered black stain with slight show gas bubbles in porosity, dense, fair show free oil, poor odor

~3380' LS, cream to gray, micro-crypto xln, mostly dense and barren with poor visible porosity, some scattered (~15-20%) with scattered pinpoint to very slightly vuggy porosity with poor black stain in porosity, upon break VSSFO

**B/KC 3396 (-1459)**

3405' 30" LS, cream to gray, micro-crypto xln, mostly dense and barren with poor visible porosity, with influx of gray shale, also with some very scattered (<10%) with few scattered small vugs and scattered black stain with slight show gas bubbles in porosity, dense, fair show free oil, poor odor

3405' 60" Mostly gray and red shale with some scattered cream LS, micro-crypto xln, some fossiliferous with several very small edge vugs and very scattered black stain, NSFO, no odor

3420' 30" Red and gray shale with some scattered cream to gray LS and orange to red and tan to opaque chert, some scattered oolitic, NSFO, no odor, heavy red wash

3420' 60" Conglomerate as above, with trace dolomite, white, micro-xln, sub-sucrosic and dense with poor visible porosity, with very scattered black stain, NSFO, no odor, red wash

**Arbuckle 3421 (-1484)**

3428' 20" Dolomite, white, micro-med xln, sub-sucrosic to sucrosic with poor to fair sub-rhombic to rhombic development, some very scattered good rhombic, some dense, some fairly friable, overall mostly poor with some scattered fair visible inter-xln porosity and scattered brown to black inter-xln stain on most chips, some scattered chips very slowly bleed oil droplets to surface and stain increases to mostly saturated when left under lamp, upon break chips have slight to fair show free oil, SSFO in tray, fair odor

3428' 45" Mostly same as above, with slight influx of white, micro-xln, sub-sucrosic and dense with poor visible porosity, barren, VSSFO in tray, fair odor

**Wondra Stoss Unit 1-15 dst4.jpg**

3435' 30" Dolomite, white, micro-med xln, sub-sucrosic with poor to fair sub-rhombic development, mostly dense with poor visible porosity and very scattered to scattered brown to dark brown stain, few chips show scattered fair inter-xln porosity, upon break most chips have slight to fair show free oil, some very scattered pyrite inclusions in some chips, slightly chalky, good odor

3435' 60" Mostly same as above, few small chips (<5%) with one to two very small vugs and mostly saturated brown stain, slightly chalky, NSFO in tray, slight show gas bubbles, good odor

**Wondra Stoss Unit 1-15 dst5.jpg**

3444' 30" Dolomite, white, micro-xln, mostly sub-sucrosic and dense with poor visible porosity, some scattered sucrosic, some very scattered poor to fair visible inter-xln porosity on few chips, some barren, some with very scattered brown stain, SSFO upon break, some scattered pyrite and some dolomite with pyrite inclusions, with abundant shale, VSSFO in tray, fair fleeting odor

3444' 60" Dolomite, mostly same as above, some very scattered fair rhombic, with scattered to very scattered brown stain, slight to fair show free oil upon break, also with abundant shale and some scattered pyrite as above, slightly chalky, fair fleeting odor

**Wondra Stoss Unit 1-15 dst6.jpg**

~3450-3480' Dolomite, white, micro-xln, sub-sucrosic to sucrosic, some dense with poor visible porosity, some poor to fair sub-rhombic, some fair rhombic with fair visible porosity, some very scattered chips with several small vugs, scattered black gilsonitic stain, scattered pyrite, slightly chalky, fair odor

~3490' Dolomite as above, with influx of cream, slightly less rhombic, mostly sub-sucrosic and dense with poor visible porosity, gilsonitic stain dropping out, slightly chalky, fair odor

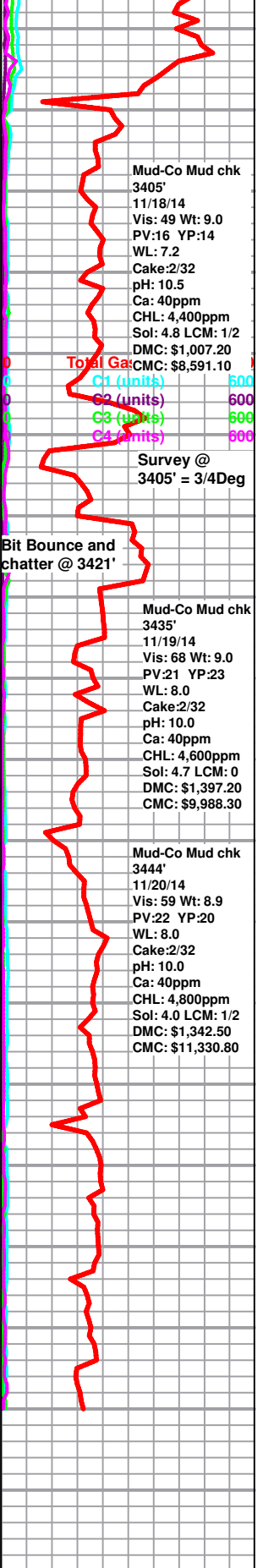
~3500' Dolomite, white to cream, micro-xln, sub-sucrosic to sucrosic with poor visible porosity, some very scattered fair rhombic, barren, slightly chalky, poor odor

~3510' Dolomite, white to cream, micro-xln, sub-sucrosic to sucrosic with scattered poor sub-rhombic development and poor visible porosity, dense and barren, slightly chalky, poor odor

~3520' Dolomite as above, poor fleeting odor

~3530' Dolomite, white to cream, micro-xln, sub-sucrosic to sucrosic and dense with poor visible porosity, some scattered poor to fair sub-rhombic development, slightly chalky, poor fleeting odor

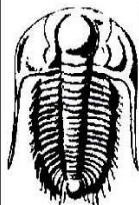
**Rotary TD 3530' @ 1205hrs 11/20/14**  
**Nabors Well Services Logging TD @ 3531'**  
**Complete Logging Operations @ 2030hrs 11/20/14**  
**Geologist Jeremy Schwartz off location @ 2200hrs 11/20/14**



**DRILL STEM TEST REPORT**

Shelby Resources, LLC.  
 2717 Canal BLVD  
 Suite C  
 Hays Ks, 67601  
 ATTN: Jeremy Schwartz

**15/18s/14w/Barton**  
**Wondra-Stoss #1-15**  
 Job Ticket: 60407 **DST#: 1**  
 Test Start: 2014.11.16 @ 11:40:00



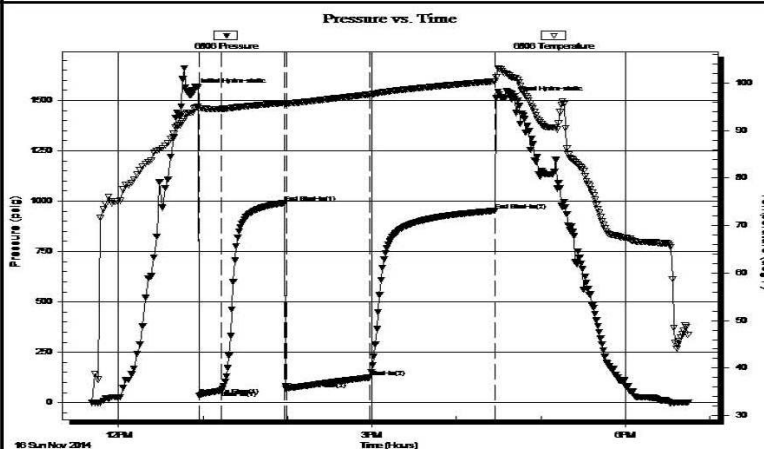
**TRILOBITE TESTING, INC.**

**GENERAL INFORMATION:**

Formation: **Lansing "A-B"**  
 Deviated: No Whipstock: ft (KB)  
 Time Tool Opened: 12:57:30  
 Time Test Ended: 18:45:00  
 Test Type: Conventional Bottom Hole (Initial)  
 Tester: Shane Konzem  
 Unit No: S#/30/Great Bend  
 Interval: **3179.00 ft (KB) To 3222.00 ft (KB) (TVD)**  
 Total Depth: 3222.00 ft (KB) (TVD)  
 Reference Elevations: 3222.00 ft (KB)  
 3179.00 ft (CF)  
 Hole Diameter: 7.88 inches Hole Condition: Fair  
 KB to GR/CF: 43.00 ft

**Serial #: 6806 Inside**  
 Press@RunDepth: 125.26 psig @ 3218.00 ft (KB) Capacity: 8000.00 psig  
 Start Date: 2014.11.16 End Date: 2014.11.16 Last Calib.: 2014.11.16  
 Start Time: 11:41:00 End Time: 18:45:00 Time On Btm: 2014.11.16 @ 12:53:30  
 Time Off Btm: 2014.11.16 @ 16:39:00

**TEST COMMENT:** 1st Open/ 15 Minutes. Fair blow built to 10 inches into bucket of water.  
 1st shut In/ 45 Minutes. Weak surface blow back.  
 2nd Open/ 60 Minutes. Good blow built to bottom of 5 gallon bucket in 17 minutes and 20 seconds.  
 2nd Shut In/ 90 Minutes. Weak surface blow back.



**PRESSURE SUMMARY**

| Time (Min.) | Pressure (psig) | Temp (deg F) | Annotation           |
|-------------|-----------------|--------------|----------------------|
| 0           | 1548.00         | 94.64        | Initial Hydro-static |
| 4           | 37.27           | 94.74        | Open To Flow (1)     |
| 19          | 60.26           | 94.60        | Shut-In(1)           |
| 64          | 991.28          | 95.86        | End Shut-In(1)       |
| 66          | 67.50           | 95.71        | Open To Flow (2)     |
| 125         | 125.26          | 97.64        | Shut-In(2)           |
| 214         | 952.81          | 100.41       | End Shut-In(2)       |
| 226         | 1506.48         | 101.24       | Final Hydro-static   |

**Recovery**

| Length (ft) | Description                          | Volume (bbl) |
|-------------|--------------------------------------|--------------|
| 0.00        | 63 feet Gas in pipe.                 | 0.00         |
| 189.00      | Gas, oil, mud cut w ater             | 0.93         |
| 0.00        | 2.5% gas 2.5% Oil 25% Mud 70% w ater | 0.00         |
| 63.00       | Muddy w ater                         | 0.31         |
| 0.00        | 15% mud, 85% w ater                  | 0.00         |
| 0.00        | Resist recov. .21 at 40 degrees      | 0.00         |

**Gas Rates**

| Choke (inches) | Pressure (psig) | Gas Rate (Mcf/d) |
|----------------|-----------------|------------------|
|                |                 |                  |



# DRILL STEM TEST REPORT

Shelby Resources, LLC.

15/18s/14w/Barton

2717 Canal BLVD  
Suite C  
Hays Ks, 67601  
ATTN: Jeremy Schw artz

Wondra-Stoss #1-15

Job Ticket: 60408      DST#: 2  
Test Start: 2014.11.17 @ 04:55:00



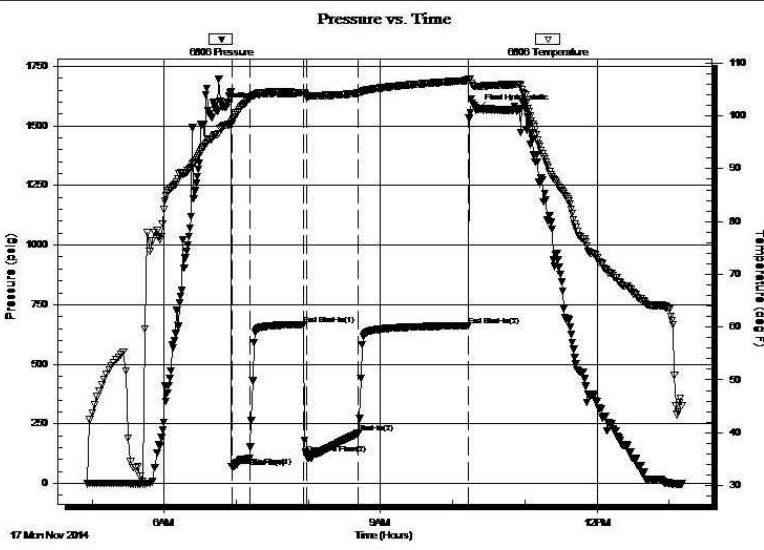
**TRILOBITE**  
**TESTING, INC.**

**GENERAL INFORMATION:**

Formation: **Lansing "H"**  
Deviated: No Whipstock:                      ft (KB)  
Time Tool Opened: 06:56:00  
Time Test Ended: 13:11:00  
Interval: **3305.00 ft (KB) To 3330.00 ft (KB) (TVD)**  
Total Depth: 3330.00 ft (KB) (TVD)  
Hole Diameter: 7.88 inches Hole Condition: Fair  
Test Type: Conventional Bottom Hole (Initial)  
Tester: Shane Konzern  
Unit No: S3/30/Great Bend  
Reference Elevations: 3222.00 ft (KB)  
3179.00 ft (CF)  
KB to GR/CF: 43.00 ft

**Serial #: 6806**      **Inside**  
Press@RunDepth: 212.31 psig @ 3326.00 ft (KB)      Capacity: 8000.00 psig  
Start Date: 2014.11.17      End Date: 2014.11.17      Last Calib.: 2014.11.17  
Start Time: 04:56:00      End Time: 13:11:00      Time On Btm: 2014.11.17 @ 06:50:30  
Time Off Btm: 2014.11.17 @ 10:20:30

**TEST COMMENT:** 1st Open/ 15 Minutes. Strong blow built to bottom of 5 gallon bucket in 1 minutes.  
1st Shut In/ 45 Minutes. Blow back built to 6 inches into deisel.  
2nd Open/ 45 Minutes. Strong blow built to bottom of 5 gallon bucket in 1 minutes. Gas to surface in 15 minutes. Gas w as unmeasurable.



**PRESSURE SUMMARY**

| Time (Min.) | Pressure (psig) | Temp (deg F) | Annotation           |
|-------------|-----------------|--------------|----------------------|
| 0           | 1578.89         | 98.19        | Initial Hydro-static |
| 6           | 70.16           | 98.41        | Open To Flow (1)     |
| 21          | 107.34          | 103.25       | Shut-In(1)           |
| 66          | 667.56          | 104.43       | End Shut-In(1)       |
| 68          | 124.14          | 103.82       | Open To Flow (2)     |
| 111         | 212.31          | 104.30       | Shut-In(2)           |
| 203         | 662.19          | 106.71       | End Shut-In(2)       |
| 210         | 1567.71         | 105.56       | Final Hydro-static   |

**Recovery**

| Length (ft) | Description          | Volume (bbl) |
|-------------|----------------------|--------------|
| 640.00      | 100% Clean gassy oil | 4.79         |
|             |                      |              |
|             |                      |              |
|             |                      |              |
|             |                      |              |

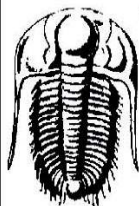
**Gas Rates**

| Choke (inches) | Pressure (psig) | Gas Rate (Mcf/d) |
|----------------|-----------------|------------------|
|                |                 |                  |

# DRILL STEM TEST REPORT

Shelby Resources, LLC.  
 2717 Canal BLVD Suite C  
 Hays Ks. 67601  
 ATTN: Jeremy Schw artz

**15/18s/14w/Barton**  
**Wondra-Stoss #1-15**  
 Job Ticket: 60409 **DST#: 3**  
 Test Start: 2014.11.18 @ 12:00:00



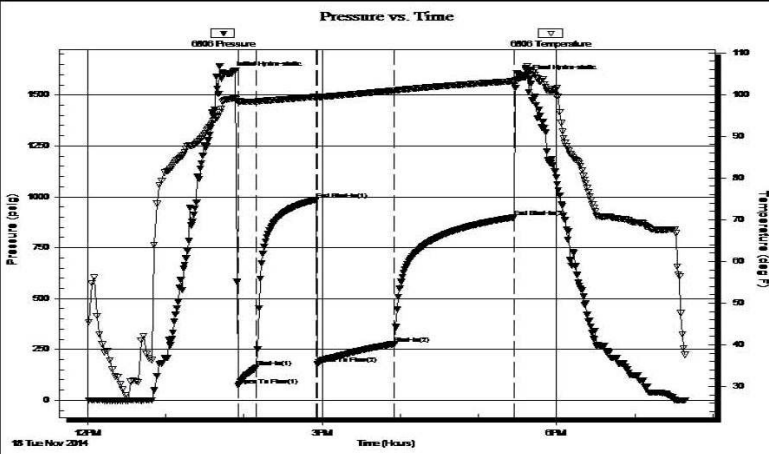
**TRILOBITE TESTING, INC.**

**GENERAL INFORMATION:**

Formation: **Lansing "I-K"**  
 Deviated: No Whipstock: ft (KB)  
 Time Tool Opened: 13:55:30  
 Time Test Ended: 19:39:00  
 Test Type: Conventional Bottom Hole (Initial)  
 Tester: Shane Konzem  
 Unit No: S3/30/Great Bend  
**Interval: 3335.00 ft (KB) To 3405.00 ft (KB) (TVD)**  
 Total Depth: 3405.00 ft (KB) (TVD)  
 Hole Diameter: 7.88 inches  
 Hole Condition: Good  
 Reference Elevations: 3222.00 ft (KB)  
 3179.00 ft (CF)  
 KB to GR/CF: 43.00 ft

**Serial #: 6806 Inside**  
 Press@RunDepth: 278.06 psig @ 3401.36 ft (KB) Capacity: 8000.00 psig  
 Start Date: 2014.11.18 End Date: 2014.11.18 Last Calib.: 2014.11.18  
 Start Time: 12:01:00 End Time: 19:39:00 Time On Btm: 2014.11.18 @ 13:49:30  
 Time Off Btm: 2014.11.18 @ 17:36:00

**TEST COMMENT:** 1st Open/ 15 Minutes. Good blow built to bottom of 5 gallon bucket in 6 minutes and 20 seconds.  
 1st Shut In/ 45 Minutes. No blow back.  
 2nd Open/ 60 Minutes. Good blow built to bottom of 5 gallon bucket in 10 minutes.  
 2nd Shut In/ 90 Minutes. No blow back.



**PRESSURE SUMMARY**

| Time (Min.) | Pressure (psig) | Temp (deg F) | Annotation           |
|-------------|-----------------|--------------|----------------------|
| 0           | 1603.03         | 98.94        | Initial Hydro-static |
| 6           | 71.22           | 98.46        | Open To Flow (1)     |
| 20          | 161.59          | 98.29        | Shut-In(1)           |
| 66          | 985.66          | 99.48        | End Shut-In(1)       |
| 67          | 180.48          | 99.36        | Open To Flow (2)     |
| 126         | 278.06          | 100.95       | Shut-In(2)           |
| 218         | 899.45          | 103.19       | End Shut-In(2)       |
| 227         | 1586.47         | 104.13       | Final Hydro-static   |

**Recovery**

| Length (ft) | Description                 | Volume (bbl) |
|-------------|-----------------------------|--------------|
| 156.00      | Gassy oil cut mud           | 0.77         |
| 0.00        | 15% gas, 25% oil, 60% mud   | 0.00         |
| 126.00      | Oil cut muddy w ater        | 0.62         |
| 0.00        | 5% oil, 40% mud, 55% w ater | 0.00         |
| 63.00       | muddy w ater                | 0.73         |
| 0.00        | 40% mud, 60% w ater         | 0.00         |

**Gas Rates**

| Choke (inches) | Pressure (psig) | Gas Rate (Mcf/d) |
|----------------|-----------------|------------------|
|                |                 |                  |





**TRILOBITE TESTING, INC**

**DRILL STEM TEST REPORT**

Shelby Resources, LLC.  
2717 Canal BLVD  
Suite C  
Hays Ks, 67601  
ATTN: Jeremy Schwartz

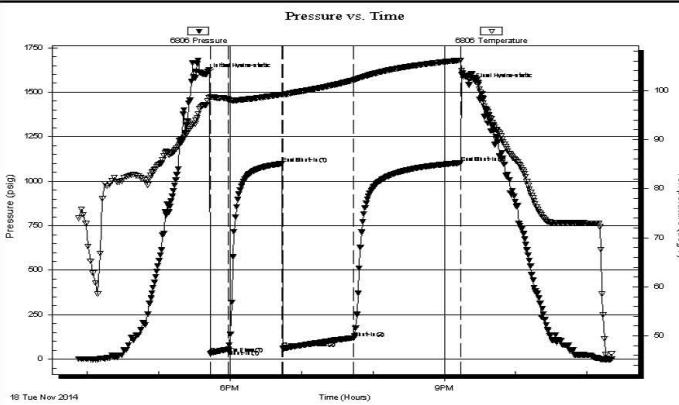
**15/18s/14w/Barton**  
**Wondra-Stoss #1-15**  
Job Ticket: 60410 **DST#: 4**  
Test Start: 2014.11.18 @ 15:52:00

**GENERAL INFORMATION:**

Formation: **Arbuckle**  
Deviated: No Whipstock: ft (KB)  
Time Tool Opened: 17:43:30  
Time Test Ended: 23:20:30  
Test Type: Conventional Bottom Hole (Initial)  
Tester: Shane Konzem  
Unit No: S3/30/Great Bend  
Interval: **3392.00 ft (KB) To 3428.00 ft (KB) (TVD)**  
Reference Elevations: 3222.00 ft (KB)  
Total Depth: 3428.00 ft (KB) (TVD) 3179.00 ft (CF)  
Hole Diameter: 7.88 inches Hole Condition: Fair KB to GR/CF: 43.00 ft

**Serial #: 6806 Inside**  
Press@RunDepth: 119.88 psig @ 3424.00 ft (KB) Capacity: 8000.00 psig  
Start Date: 2014.11.18 End Date: 2014.11.18 Last Calib.: 2014.11.19  
Start Time: 15:53:00 End Time: 23:20:30 Time On Btm: 2014.11.18 @ 17:40:30  
Time Off Btm: 2014.11.18 @ 21:20:30

**TEST COMMENT:** 1st Open/ 15 Minutes. Weak blow built to 3 1/2 inches into bucket of deisel.  
1st Shut In/ 45 Minutes. No blow back.  
2nd Open/ 60 Minutes. Fair blow built to bottom of 5 gallon bucket in 45 minutes.  
2nd Shut In/ 60 Minutes. No blow back.



**PRESSURE SUMMARY**

| Time (Min.) | Pressure (psig) | Temp (deg F) | Annotation           |
|-------------|-----------------|--------------|----------------------|
| 0           | 1598.74         | 97.08        | Initial Hydro-static |
| 3           | 32.62           | 98.63        | Open To Flow (1)     |
| 18          | 55.17           | 98.16        | Shut-In(1)           |
| 63          | 1098.30         | 99.22        | End Shut-In(1)       |
| 64          | 60.47           | 99.16        | Open To Flow (2)     |
| 124         | 119.88          | 102.16       | Shut-In(2)           |
| 213         | 1103.00         | 106.15       | End Shut-In(2)       |
| 220         | 1541.64         | 102.72       | Final Hydro-static   |

**Recovery**

| Length (ft) | Description          | Volume (bbl) |
|-------------|----------------------|--------------|
| 0.00        | 63 feet gas in pipe  | 0.00         |
| 315.00      | 100% clean gassy oil | 1.70         |
|             |                      |              |
|             |                      |              |
|             |                      |              |

**Gas Rates**

| Choke (inches) | Pressure (psig) | Gas Rate (Mcf/d) |
|----------------|-----------------|------------------|
|                |                 |                  |

# DRILL STEM TEST REPORT



**TRILOBITE  
TESTING, INC.**

Shelby Resources, LLC.  
2717 Canal BLVD  
Suite C  
Hays Ks, 67601  
ATTN: Jeremy Schwartz

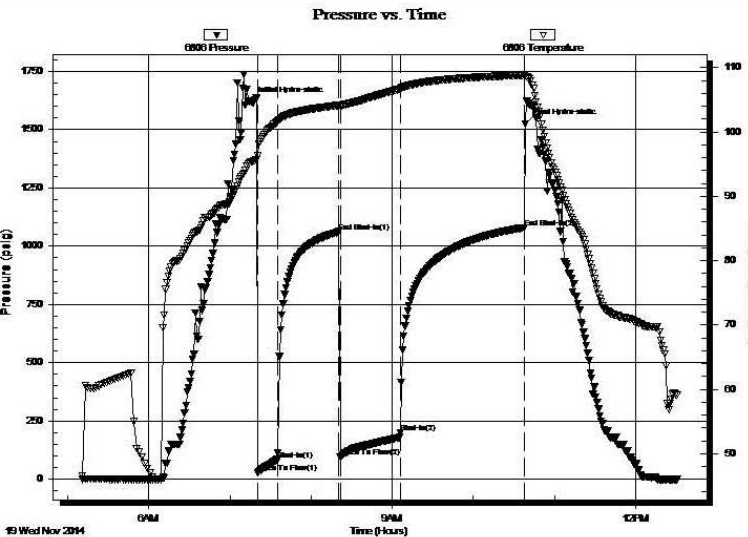
**15/18s/14w/Barton**  
**Wondra-Stoss #1-15**  
Job Ticket: 60411      **DST#: 5**  
Test Start: 2014.11.19 @ 05:10:00

**GENERAL INFORMATION:**

Formation: **Arbuckle**  
Deviated: No Whipstock:                      ft (KB)  
Time Tool Opened: 07:20:30  
Time Test Ended: 12:30:30  
Interval: **3428.00 ft (KB) To 3435.00 ft (KB) (TVD)**  
Total Depth: 3435.00 ft (KB) (TVD)  
Hole Diameter: 7.88 inches Hole Condition: Good  
Test Type: Conventional Bottom Hole (Initial)  
Tester: Shane Konzern  
Unit No: S3/30/Great Bend  
Reference Elevations: 3222.00 ft (KB)  
3179.00 ft (CF)  
KB to GR/CF: 43.00 ft

**Serial #: 6806      Inside**  
Press@RunDepth: 200.03 psig @ 3431.00 ft (KB)      Capacity: 8000.00 psig  
Start Date: 2014.11.19      End Date: 2014.11.19      Last Calib.: 2014.11.19  
Start Time: 05:11:00      End Time: 12:30:30      Time On Btm: 2014.11.19 @ 07:15:30  
Time Off Btm: 2014.11.19 @ 10:38:30

**TEST COMMENT:** 1st Open/ 15 Minutes. Good blow built to bottom of 5 gallon bucket in 10 minutes.  
1st Shut In/ 45 Minutes. Weak surface blow back.  
2nd Open/ 45 Minutes. Good blow built to bottom of 5 gallon bucket in 13 minutes.  
2nd Shut In/ 90 Minutes. Weak surface blow back.



**PRESSURE SUMMARY**

| Time (Min.) | Pressure (psig) | Temp (deg F) | Annotation           |
|-------------|-----------------|--------------|----------------------|
| 0           | 1618.87         | 95.32        | Initial Hydro-static |
| 5           | 27.53           | 96.27        | Open To Flow (1)     |
| 20          | 84.61           | 101.58       | Shut-In(1)           |
| 65          | 1061.89         | 104.14       | End Shut-In(1)       |
| 66          | 94.96           | 104.02       | Open To Flow (2)     |
| 111         | 200.03          | 106.71       | Shut-In(2)           |
| 202         | 1079.65         | 108.83       | End Shut-In(2)       |
| 203         | 1524.43         | 108.95       | Final Hydro-static   |

**Recovery**

| Length (ft) | Description      | Volume (bbl) |
|-------------|------------------|--------------|
| 472.00      | 100% Clean Oil   | 3.90         |
| 63.00       | Muddy cut oil    | 0.88         |
| 0.00        | 20% mud, 80% oil | 0.00         |
|             |                  |              |
|             |                  |              |

**Gas Rates**

|  | Choke (inches) | Pressure (psig) | Gas Rate (Mcf/d) |
|--|----------------|-----------------|------------------|
|  |                |                 |                  |

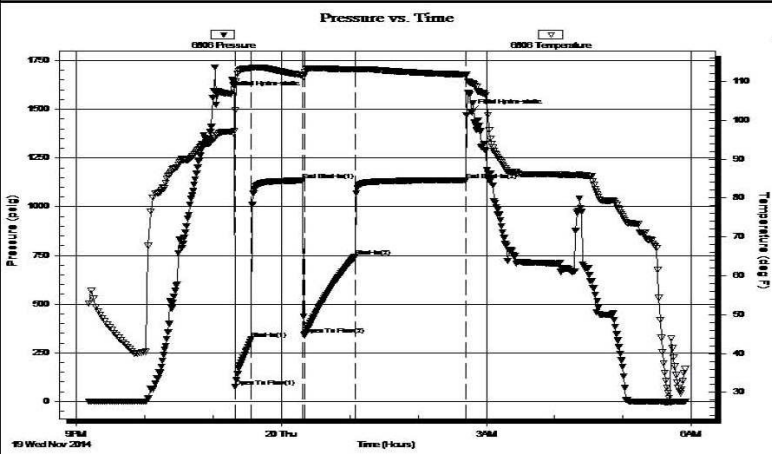
|                                                                                                                                                                                                            |                                                                                                 |                                                                                                                                    |
|------------------------------------------------------------------------------------------------------------------------------------------------------------------------------------------------------------|-------------------------------------------------------------------------------------------------|------------------------------------------------------------------------------------------------------------------------------------|
|  <p style="font-size: 2em; margin: 0;"><b>TRILOBITE</b></p> <p style="font-size: 2em; margin: 0;"><b>TESTING, INC.</b></p> | <h2>DRILL STEM TEST REPORT</h2>                                                                 |                                                                                                                                    |
|                                                                                                                                                                                                            | Shelby Resources, LLC.<br>2717 Canal BLVD<br>Suite C<br>Hays Ks, 67601<br>ATTN: Jeremy Schwartz | <b>15/18s/14w/Barton</b><br><br><b>Wondra-Stoss #1-15</b><br>Job Ticket: 60412 <b>DST#: 6</b><br>Test Start: 2014.11.19 @ 21:10:00 |

**GENERAL INFORMATION:**

|                                                           |                                               |
|-----------------------------------------------------------|-----------------------------------------------|
| Formation: <b>Arbuckle</b>                                | Test Type: Conventional Bottom Hole (Initial) |
| Deviated: No Whipstock: ft (KB)                           | Tester: Shane Konzern                         |
| Time Tool Opened: 23:19:30                                | Unit No: S3/30/Great Bend                     |
| Time Test Ended: 05:54:30                                 | Reference Elevations: 1937.00 ft (KB)         |
| Interval: <b>3435.00 ft (KB) To 3444.00 ft (KB) (TVD)</b> | 1924.00 ft (CF)                               |
| Total Depth: 3444.00 ft (KB) (TVD)                        | KB to GR/CF: 13.00 ft                         |
| Hole Diameter: 7.88 inches Hole Condition: Fair           |                                               |

|                                                  |                                     |
|--------------------------------------------------|-------------------------------------|
| <b>Serial #: 6806</b> <b>Inside</b>              | Capacity: 8000.00 psig              |
| Press@RunDepth: 743.09 psig @ 3440.00 ft (KB)    | Last Calib.: 2014.11.20             |
| Start Date: 2014.11.19      End Date: 2014.11.20 | Time On Btm: 2014.11.19 @ 23:12:30  |
| Start Time: 21:10:00      End Time: 05:54:30     | Time Off Btm: 2014.11.20 @ 02:46:30 |

**TEST COMMENT:** 1st Open/ 15 Minutes. Good blow built to bottom of 5 gallon bucket in 2 minutes and 15 seconds.  
 1st Shut In/ 45 Minutes. Weak surface blow back.  
 2nd Open/ 45 Minutes. Good blow built to bottom of 5 gallon bucket in 2 minutes and 20 seconds.  
 2nd Shut In/ 90 Minutes. 2 inch blow back.



**PRESSURE SUMMARY**

| Time (Min.) | Pressure (psig) | Temp (deg F) | Annotation           |
|-------------|-----------------|--------------|----------------------|
| 0           | 1580.77         | 97.07        | Initial Hydro-static |
| 7           | 76.02           | 102.50       | Open To Flow (1)     |
| 21          | 319.38          | 113.36       | Shut-In(1)           |
| 67          | 1134.53         | 111.57       | End Shut-In(1)       |
| 68          | 340.59          | 111.83       | Open To Flow (2)     |
| 112         | 743.09          | 113.04       | Shut-In(2)           |
| 209         | 1136.26         | 111.76       | End Shut-In(2)       |
| 214         | 1487.01         | 109.48       | Final Hydro-static   |

**Recovery**

| Length (ft) | Description                     | Volume (bbl) |
|-------------|---------------------------------|--------------|
| 0.00        | 189 feet gas in pipe.           | 0.00         |
| 30.00       | 100% Clean Oil                  | 0.00         |
| 63.00       | Mud, Oil, cut Water             | 0.00         |
| 0.00        | 20% mud, 30% Oil, 50% water     | 0.00         |
| 1607.00     | Reversed out of pipe            | 19.66        |
| 0.00        | resist recov, .22 at 40 degrees | 0.00         |

**Gas Rates**

|  | Choke (inches) | Pressure (psig) | Gas Rate (Mcf/d) |
|--|----------------|-----------------|------------------|
|  |                |                 |                  |