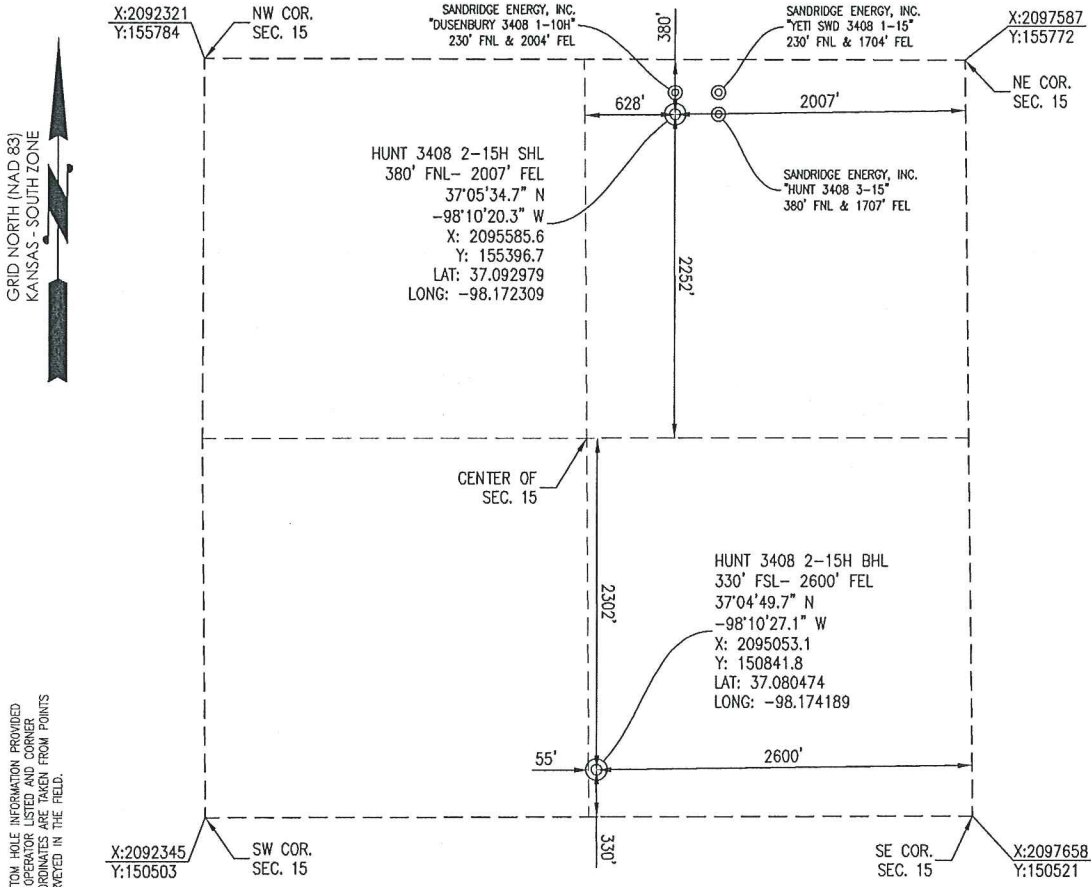


HARPER COUNTY, KANSAS
 380' FNL- 2007' FEL SECTION 15 TOWNSHIP 34S RANGE 08W 6TH P.M.



OPERATOR: SANDRIDGE ENERGY, INC. **WELL NO:** 2-15H

ELEVATION:
 1384' GR. AT STAKE

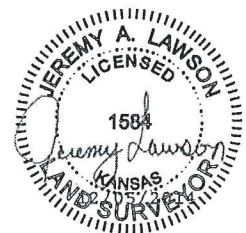
LEASE NAME: HUNT 3408

TOPOGRAPHIC & VEGETATION: LOCATION FELL IN A FIELD

GOOD DRILL SITE: YES **REFERENCE STAKES OR ALTERNATE LOCATION STAKES SET:** NONE

BEST ACCESSIBILITY TO LOCATION: NORTH LINE

DISTANCE & DIRECTION FROM HWY JCT OR TOWN: FROM THE JCT. OF OK-2 & SW 70 AVE (±7.5 MILES WEST OF ANTHONY, KS) TRAVEL SOUTH ON SW 70 AVE FOR ±4.0 MILES TO THE NORTHEAST CORNER OF SECTION 15, T34S-R08W.



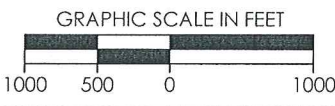
(THE FOLLOWING INFORMATION WAS GATHERED USING A GPS RECEIVER ACCURACY ±2-3 METERS)

GPS DATUM: NAD-27
LAT: 37.092979
LONG: -98.172309

STATE PLANE COORDINATES:
ZONE: KS-SOUTH NAD-27
X: 2095585.6
Y: 155396.7

GENERAL NOTES:
DATE STAKED: 11-04-2014

THE TIES AND FOOTAGES SHOWN ON THIS PLAT ARE FROM LINES OF OCCUPATION FROM A SURVEY MADE ON THE GROUND AND / OR BEARING AND DISTANCES FROM THE GENERAL LAND OFFICE PLAT OF THE AREA SHOWN AND MAY NOT BE THE ACTUAL PROPERTY CORNERS. THIS PLAT DOES NOT REPRESENT A TRUE BOUNDARY SURVEY. DRILL SITE CONDITION DETERMINATIONS WERE MADE BY SANDRIDGE ENERGY INC. REPRESENTATIVES.



REVISION		SandRidge	
△	MOVED SHL (11-4-2014)	"HUNT 3408 2-15H" PART OF THE NE1/4 OF SECTION 15, T-34-S, R-08-W PROPOSED DRILL SITE HARPER COUNTY, KANSAS	
△	MOVED BHL (12-3-2014)		
△	MOVED BHL (12-5-2014)		
		SCALE: 1" = 1000'	
		PLOT DATE: 12-05-2014	DRAWN BY: MF SHEET NO.: 1 OF 4