



DRILL STEM TEST REPORT

Prepared For: **Special Energy**

PO Drawer 369
Stillwater OK 74076

ATTN: George Utley

HXP 1 #3

19-22s-19w-Pawnee,KS

Start Date: 2014.09.23 @ 21:21:00

End Date: 2014.09.24 @ 07:00:30

Job Ticket #: 60322 DST #: 1

Trilobite Testing, Inc
1515 Commerce Parkway Hays, KS 67601
ph: 785-625-4778 fax: 785-625-5620

Printed: 2014.09.26 @ 09:13:31



**TRILOBITE
TESTING, INC**

DRILL STEM TEST REPORT

TOOL DIAGRAM

Special Energy

19-22s-19w-Pawnee,KS

PO Draw er 369
Stillw ater OK 74076

HXP 1 #3

Job Ticket: 60322

DST#: 1

ATTN: George Utley

Test Start: 2014.09.23 @ 21:21:00

Tool Information

Drill Pipe:	Length: 4068.00 ft	Diameter: 3.80 inches	Volume: 57.06 bbl	Tool Weight:	2000.00 lb
Heavy Wt. Pipe:	Length: 0.00 ft	Diameter: 0.00 inches	Volume: 0.00 bbl	Weight set on Packer:	20000.00 lb
Drill Collar:	Length: 246.13 ft	Diameter: 2.25 inches	Volume: 1.21 bbl	Weight to Pull Loose:	69000.00 lb
			<u>Total Volume: 58.27 bbl</u>	Tool Chased	0.00 ft
Drill Pipe Above KB:	29.13 ft			String Weight: Initial	62000.00 lb
Depth to Top Packer:	4313.00 ft			Final	62000.00 lb
Depth to Bottom Packer:	ft				
Interval betw een Packers:	65.83 ft				
Tool Length:	93.83 ft				
Number of Packers:	2	Diameter: 6.75 inches			
Tool Comments:					

Tool Description	Length (ft)	Serial No.	Position	Depth (ft)	Accum. Lengths
------------------	-------------	------------	----------	------------	----------------

Shut In Tool	5.00			4290.00	
Hydraulic tool	5.00			4295.00	
Jars	6.00			4301.00	
Safety Joint	2.00			4303.00	
Top Packer	5.00			4308.00	
Packer	5.00			4313.00	28.00 Bottom Of Top Packer
Anchor	5.00			4318.00	
Change Over Sub	0.75			4318.75	
Drill Pipe	31.33			4350.08	
Change Over Sub	0.75			4350.83	
Anchor	23.00			4373.83	
Recorder	0.00	6839	Inside	4373.83	
Recorder	0.00	6999	Outside	4373.83	
Bull Plug	5.00			4378.83	65.83 Anchor Tool

Total Tool Length: 93.83



**TRILOBITE
TESTING, INC**

DRILL STEM TEST REPORT

FLUID SUMMARY

Special Energy

19-22s-19w-Pawnee,KS

PO Draw er 369
Stillw ater OK 74076

HXP 1 #3

Job Ticket: 60322

DST#: 1

ATTN: George Utley

Test Start: 2014.09.23 @ 21:21:00

Mud and Cushion Information

Mud Type: Gel Chem

Cushion Type:

Oil API:

deg API

Mud Weight: 9.00 lb/gal

Cushion Length:

ft

Water Salinity:

ppm

Viscosity: 29.00 sec/qt

Cushion Volume:

bbf

Water Loss: in³

Gas Cushion Type:

Resistivity: ohm.m

Gas Cushion Pressure:

psig

Salinity: 70000.00 ppm

Filter Cake: 0.00 inches

Recovery Information

Recovery Table

Length ft	Description	Volume bbf
200.00	Mud 100%	0.984
0.00	GTS	0.000

Total Length: 200.00 ft Total Volume: 0.984 bbf

Num Fluid Samples: 0

Num Gas Bombs: 0

Serial #:

Laboratory Name:

Laboratory Location:

Recovery Comments:



**TRILOBITE
TESTING, INC.**

DRILL STEM TEST REPORT

GAS RATES

Special Energy

19-22s-19w-Pawnee,KS

PO Drawer 369
Stillwater OK 74076

HXP 1 #3

Job Ticket: 60322

DST#: 1

ATTN: George Utley

Test Start: 2014.09.23 @ 21:21:00

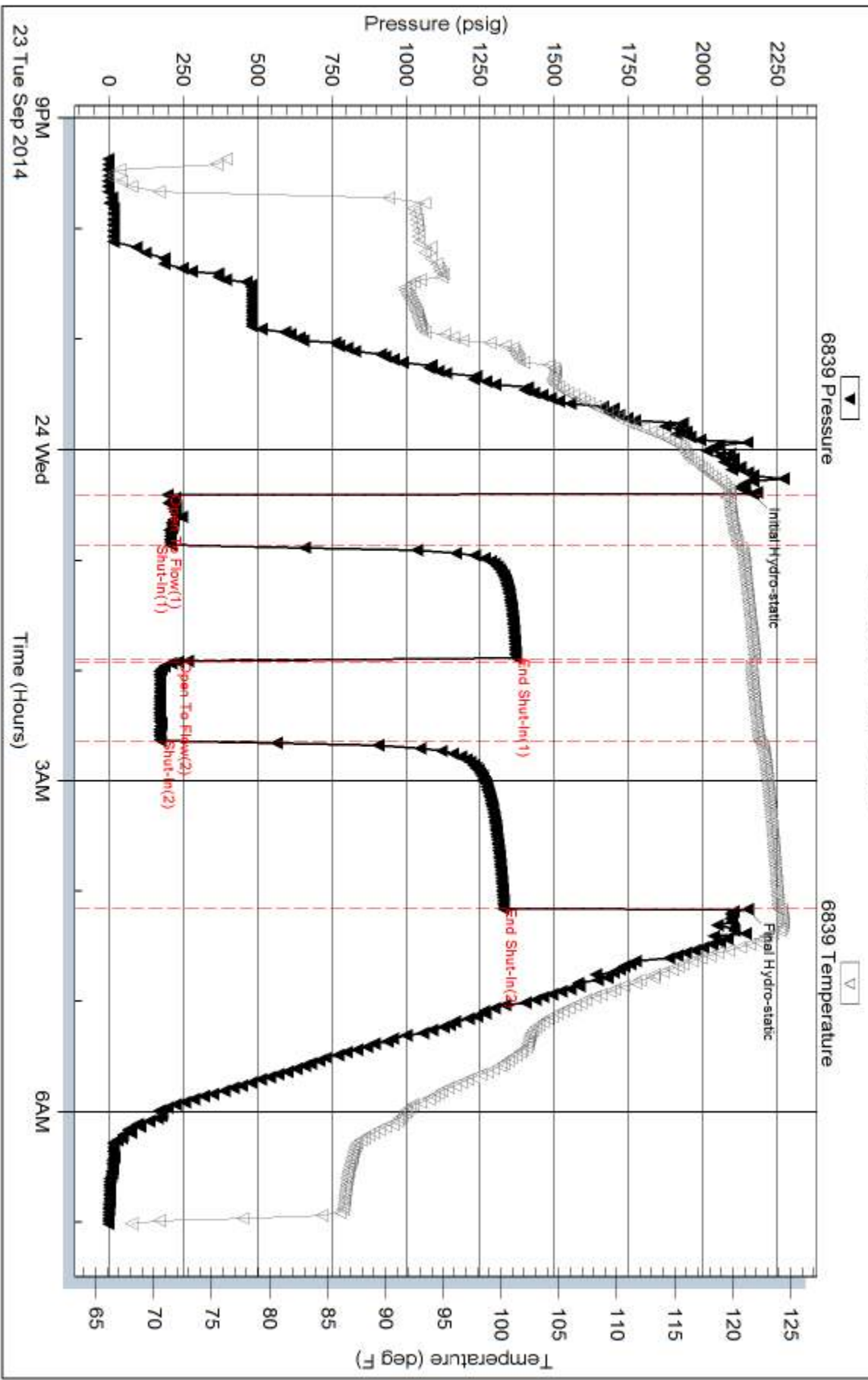
Gas Rates Information

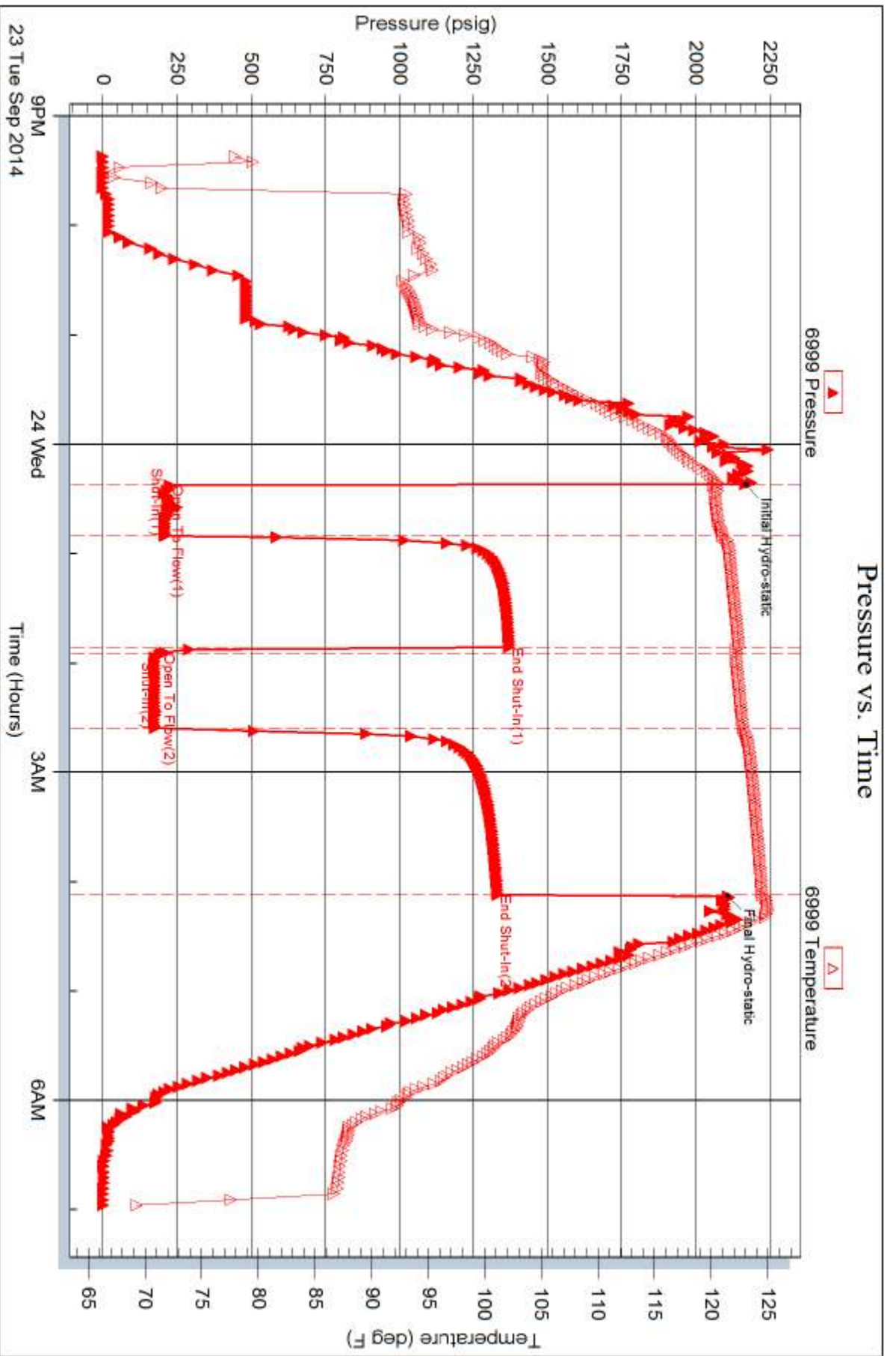
Temperature: 59 (deg F)
Relative Density: 0.65
Z Factor: 0.8

Gas Rates Table

Flow Period	Elapsed Time	Choke (inches)	Pressure (psig)	Gas Rate (Mcf/d)
1	5	0.50	2.80	116.03
1	5	0.50	2.80	116.03
1	10	0.50	2.80	116.03
1	15	0.50	2.80	116.03
1	20	0.50	11.90	177.41
1	25	0.50	21.70	243.52
1	30	0.50	26.50	275.90
2	10	0.50	26.50	275.90
2	20	0.50	31.00	306.25
2	30	0.50	32.30	315.02

Pressure vs. Time







TRILOBITE TESTING INC.

1515 Commerce Parkway • Hays, Kansas 67601

Test Ticket

NO. 60322

Well Name & No. HXP1 #3 Test No. 1 Date 9-23-14
 Company Special Energy Elevation 2144 KB 2155 GL
 Address PO Drawer 369 Stillwater Oklahoma 74076
 Co. Rep / Geo. Rob George Utley Rig H2 Drilling Rig 4
 Location: Sec. 19 Twp. 22s Rge. 19w Co. Pawnee State KS

Interval Tested 4313 - 4378 Zone Tested Mississippi
 Anchor Length 65 Drill Pipe Run 4068 Mud Wt. 9.3
 Top Packer Depth 4308 Drill Collars Run 240.13 Vis 29
 Bottom Packer Depth 4313 Wt. Pipe Run 3000 WL —
 Total Depth 4378 Chlorides 70,000 ppm System LCM 0

Blow Description 1st open - Strong blow blew off bottom bucket less than 1 min
1st shut-in - Yes blow back
2nd open - Strong blow blew off bottom bucket instantly.
2nd shut-in - Yes blow back.

Rec	Feet of	%gas	%oil	%water	%mud
<u>200</u>	<u>mud</u>			<u>100</u>	

Rec Total 200 BHT _____ Gravity _____ API RW _____ @ _____ °F Chlorides _____ ppm

(A) Initial Hydrostatic 2169 Test bottom hole 1250 T-On Location 8:45pm
 (B) First Initial Flow 198 Jars Yes 250 T-Started 9:21pm
 (C) First Final Flow 267 Safety Joint Yes 75 T-Open 12:23am
 (D) Initial Shut-In 1371 Circ Sub none T-Pulled 4:08am
 (E) Second Initial Flow 232 Hourly Standby _____ T-Out 7:10am
 (F) Second Final Flow 175 Mileage 100 155 Comments no steps end cutwalk
 (G) Final Shut-In 1328 Sampler none Giss sample taken.
 (H) Final Hydrostatic 2150 Straddle none Ruined Shale Packer _____
 Shale Packer none Ruined Packer _____
 Extra Packer none Extra Copies _____
 Extra Recorder none Sub Total 0
 Day Standby none Total 1880.00
 Accessibility Yes/no steps 150 MP/DST Disc't _____
 Sub Total 1880.00

Approved By _____ Our Representative Dustin Ellis
 Trilobite Testing Inc. shall not be liable for damaged of any kind of the property or personnel of the one for whom a test is made, or for any loss suffered or sustained, directly or indirectly, through the use of its equipment, or its statements or opinion concerning the results of any test, tools lost or damaged in the hole shall be paid for at cost by the party for whom the test is made.