



## DRILL STEM TEST REPORT

Prepared For: **Special Energy**

PO Drawer 369  
Stillwater OK 74076

ATTN: Rod Andersen

**HXP 1 #4**

**20-23s-19w Edward,KS**

Start Date: 2014.10.05 @ 17:54:00

End Date: 2014.10.06 @ 01:33:23

Job Ticket #: 60324                      DST #: 1

Trilobite Testing, Inc  
1515 Commerce Parkway Hays, KS 67601  
ph: 785-625-4778 fax: 785-625-5620

Printed: 2014.10.08 @ 13:43:46



**TRILOBITE  
TESTING, INC**

# DRILL STEM TEST REPORT

Special Energy

**20-23s-19w Edward,KS**

PO Draw er 369  
Stillw ater OK 74076

**HXP 1 #4**

Job Ticket: 60324

**DST#: 1**

ATTN: Rod Andersen

Test Start: 2014.10.05 @ 17:54:00

## GENERAL INFORMATION:

Formation: **Mississippi**

Deviated: No Whipstock: ft (KB)

Time Tool Opened: 20:03:30

Time Test Ended: 01:33:23

Test Type: Conventional Bottom Hole (Initial)

Tester: Dustin Ellis

Unit No: S2

**Interval: 4498.00 ft (KB) To 4578.00 ft (KB) (TVD)**

Reference Elevations: 2251.00 ft (KB)

Total Depth: 4578.00 ft (KB) (TVD)

2240.00 ft (CF)

Hole Diameter: 7.88 inches Hole Condition: Fair

KB to GR/CF: 11.00 ft

**Serial #: 6839**

**Inside**

Press@RunDepth: 76.51 psig @ 4573.95 ft (KB)

Capacity: 5000.00 psig

Start Date: 2014.10.05

End Date:

2014.10.06

Last Calib.:

2014.10.06

Start Time: 17:55:00

End Time:

01:33:23

Time On Btm:

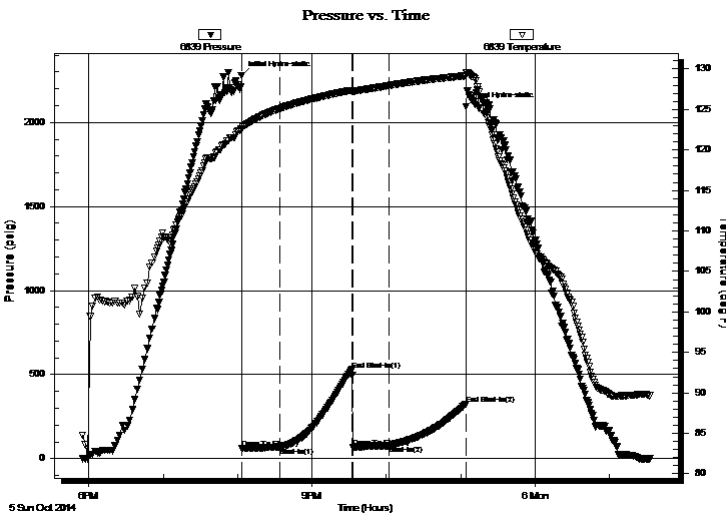
2014.10.05 @ 20:03:00

Time Off Btm:

2014.10.05 @ 23:04:30

**TEST COMMENT:** 1st Open 30 minutes Weak surface blow through out.  
1st Shut in 60 minutes No blow back.  
2nd Open 30 minutes Dead Flushed tool no help.  
2nd Shut in 60 minutes No blow back.

## PRESSURE SUMMARY



Time (Min.)	Pressure (psig)	Temp (deg F)	Annotation
0	2280.74	122.60	Initial Hydro-static
1	59.14	122.56	Open To Flow (1)
32	67.48	125.12	Shut-In(1)
89	528.70	127.37	End Shut-In(1)
90	68.88	127.27	Open To Flow (2)
120	76.51	127.97	Shut-In(2)
181	324.86	129.16	End Shut-In(2)
182	2094.28	129.58	Final Hydro-static

## Recovery

Length (ft)	Description	Volume (bbl)
10.00	Mud 100%	0.05

## Gas Rates

	Choke (inches)	Pressure (psig)	Gas Rate (Mcf/d)



**TRILOBITE TESTING, INC**

# DRILL STEM TEST REPORT

Special Energy

**20-23s-19w Edward,KS**

PO Drawer 369  
Stillwater OK 74076

**HXP 1 #4**

Job Ticket: 60324

**DST#: 1**

ATTN: Rod Andersen

Test Start: 2014.10.05 @ 17:54:00

## GENERAL INFORMATION:

Formation: **Mississippi**

Deviated: No Whipstock: ft (KB)

Time Tool Opened: 20:03:30

Time Test Ended: 01:33:23

Test Type: Conventional Bottom Hole (Initial)

Tester: Dustin Ellis

Unit No: S2

**Interval: 4498.00 ft (KB) To 4578.00 ft (KB) (TVD)**

Reference Elevations: 2251.00 ft (KB)

Total Depth: 4578.00 ft (KB) (TVD)

2240.00 ft (CF)

Hole Diameter: 7.88 inches Hole Condition: Fair

KB to GR/CF: 11.00 ft

**Serial #: 6999 Outside**

Press@RunDepth: 321.22 psig @ 4573.95 ft (KB)

Capacity: 5000.00 psig

Start Date: 2014.10.05

End Date: 2014.10.06

Last Calib.: 2014.10.06

Start Time: 17:55:00

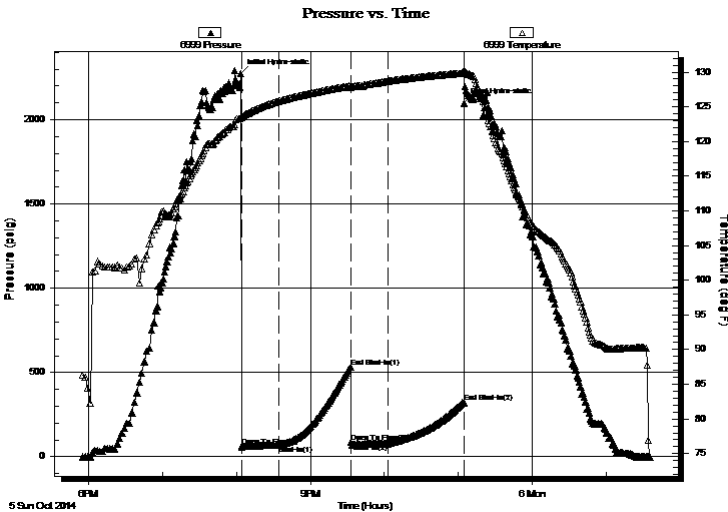
End Time: 01:35:30

Time On Btm: 2014.10.05 @ 20:03:30

Time Off Btm: 2014.10.05 @ 23:05:00

**TEST COMMENT:** 1st Open 30 minutes Weak surface blow through out.  
1st Shut in 60 minutes No blow back.  
2nd Open 30 minutes Dead Flushed tool no help.  
2nd Shut in 60 minutes No blow back.

## PRESSURE SUMMARY



Time (Min.)	Pressure (psig)	Temp (deg F)	Annotation
0	2272.93	123.49	Initial Hydro-static
1	59.75	123.42	Open To Flow (1)
31	68.77	125.80	Shut-In(1)
89	530.54	128.01	End Shut-In(1)
90	85.05	127.79	Open To Flow (2)
120	78.02	128.70	Shut-In(2)
181	321.22	129.85	End Shut-In(2)
182	2098.73	130.25	Final Hydro-static

## Recovery

Length (ft)	Description	Volume (bbl)
10.00	Mud 100%	0.05

## Gas Rates

	Choke (inches)	Pressure (psig)	Gas Rate (Mcf/d)



**TRILOBITE  
TESTING, INC**

# DRILL STEM TEST REPORT

**TOOL DIAGRAM**

Special Energy

**20-23s-19w Edward,KS**

PO Draw er 369  
Stillw ater OK 74076

**HXP 1 #4**

Job Ticket: 60324

**DST#: 1**

ATTN: Rod Andersen

Test Start: 2014.10.05 @ 17:54:00

## Tool Information

Drill Pipe:	Length: 4244.00 ft	Diameter: 3.80 inches	Volume: 59.53 bbl	Tool Weight: 2000.00 lb
Heavy Wt. Pipe:	Length: 0.00 ft	Diameter: 0.00 inches	Volume: 0.00 bbl	Weight set on Packer: 20000.00 lb
Drill Collar:	Length: 247.29 ft	Diameter: 2.25 inches	Volume: 1.22 bbl	Weight to Pull Loose: 63000.00 lb
			<u>Total Volume: 60.75 bbl</u>	Tool Chased 0.00 ft
Drill Pipe Above KB:	21.29 ft			String Weight: Initial 60000.00 lb
Depth to Top Packer:	4498.00 ft			Final 60000.00 lb
Depth to Bottom Packer:	ft			
Interval betw een Packers:	80.95 ft			
Tool Length:	108.95 ft			
Number of Packers:	2	Diameter: 6.75 inches		

Tool Comments:

## Tool Description

Tool Description	Length (ft)	Serial No.	Position	Depth (ft)	Accum. Lengths
Shut In Tool	5.00			4475.00	
Hydraulic tool	5.00			4480.00	
Jars	6.00			4486.00	
Safety Joint	2.00			4488.00	
Top Packer	5.00			4493.00	
Packer	5.00			4498.00	28.00 Bottom Of Top Packer
Anchor	6.00			4504.00	
Change Over Sub	0.75			4504.75	
Drill Pipe	62.45			4567.20	
Change Over Sub	0.75			4567.95	
Anchor	6.00			4573.95	
Recorder	0.00	6839	Inside	4573.95	
Recorder	0.00	6999	Outside	4573.95	
Bull Plug	5.00			4578.95	80.95 Anchor Tool

**Total Tool Length: 108.95**



**TRILOBITE  
TESTING, INC**

# DRILL STEM TEST REPORT

**FLUID SUMMARY**

Special Energy **20-23s-19w Edward,KS**  
 PO Drawer 369 **HXP 1 #4**  
 Stillwater OK 74076 Job Ticket: 60324 **DST#: 1**  
 ATTN: Rod Andersen Test Start: 2014.10.05 @ 17:54:00

## Mud and Cushion Information

Mud Type: Gel Chem	Cushion Type:	Oil API:	deg API
Mud Weight: 9.00 lb/gal	Cushion Length: ft	Water Salinity:	ppm
Viscosity: 46.00 sec/qt	Cushion Volume: bbl		
Water Loss: 9.18 in <sup>3</sup>	Gas Cushion Type:		
Resistivity: ohm.m	Gas Cushion Pressure: psig		
Salinity: 4600.00 ppm			
Filter Cake: 0.50 inches			

## Recovery Information

Recovery Table

Length ft	Description	Volume bbl
10.00	Mud 100%	0.049

Total Length: 10.00 ft Total Volume: 0.049 bbl  
 Num Fluid Samples: 0 Num Gas Bombs: 0 Serial #:  
 Laboratory Name: Laboratory Location:  
 Recovery Comments:

Serial #: 6839

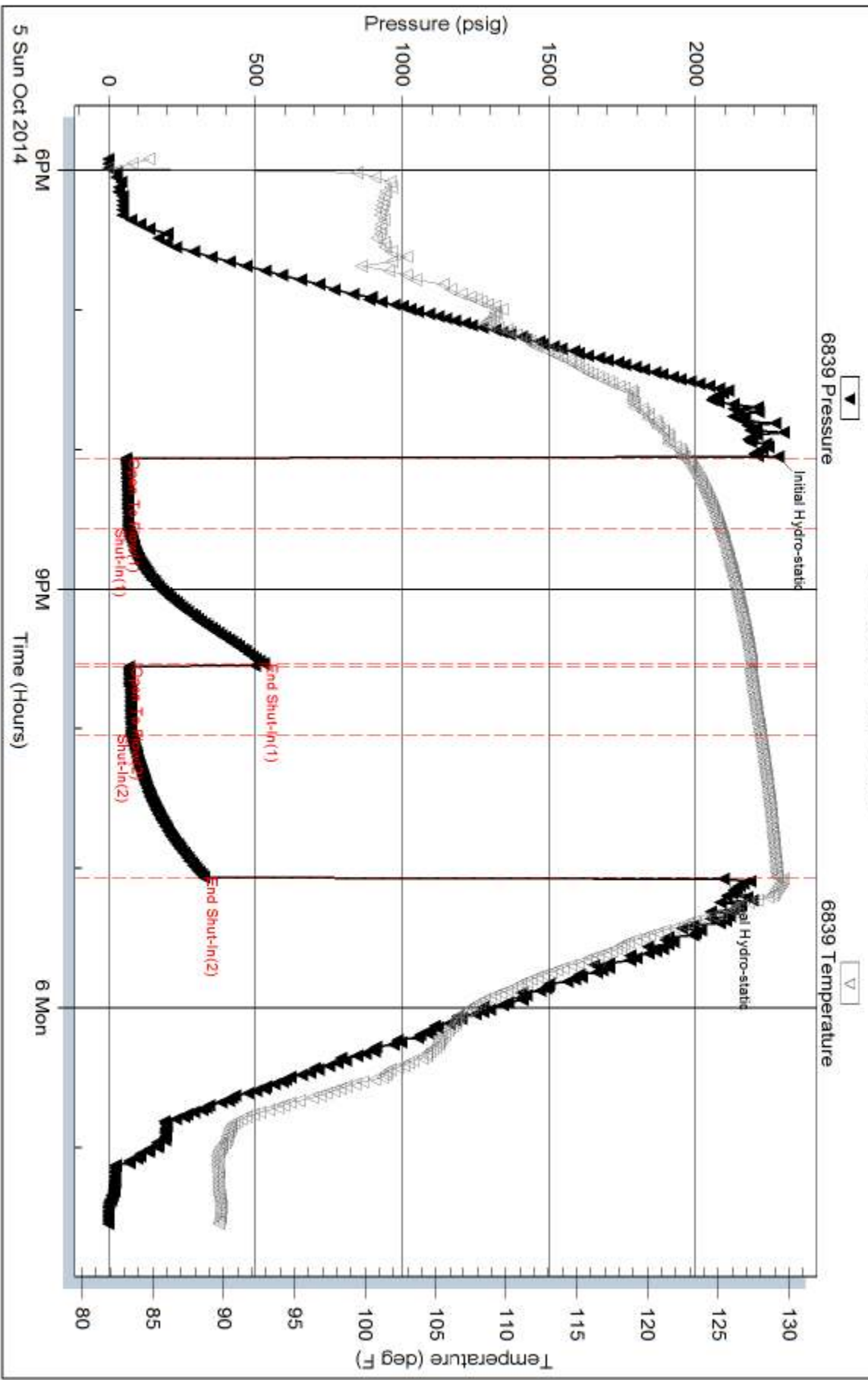
Inside

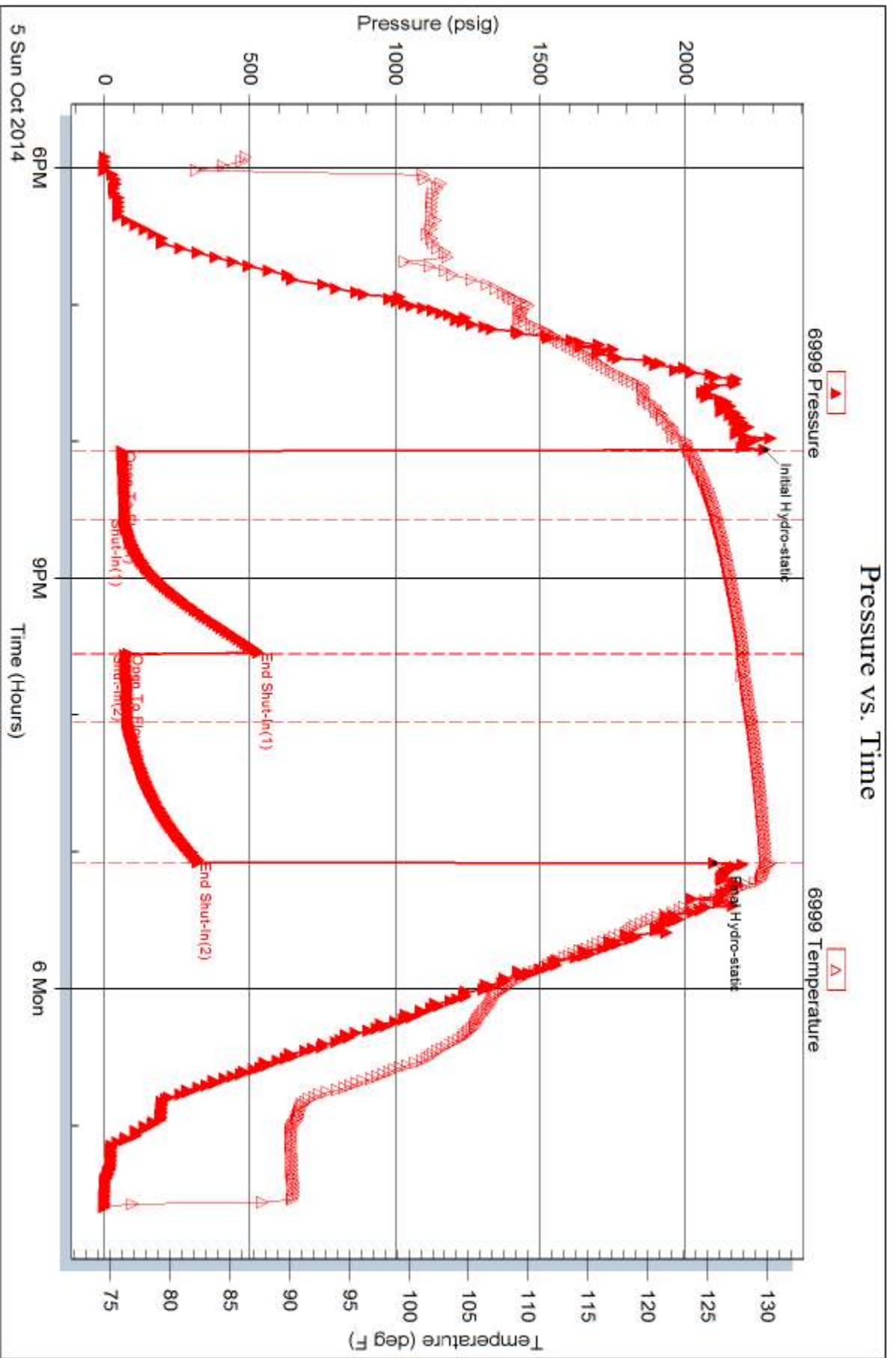
Special Energy

HXP 1 #4

DST Test Number: 1

### Pressure vs. Time









# TRILOBITE TESTING INC.

1515 Commerce Parkway • Hays, Kansas 67601

## Test Ticket

NO. 60324

4/10

Well Name & No. HXP1 #4 Test No. 1 Date 10-5-14  
 Company Special Energy Corp. Elevation 2240 KB 2258 GL  
 Address PO Drawer 369 Stilwater Oklahoma 74076  
 Co. Rep / Geo. Rod Anderson Rig H2 Drilling Rig #41  
 Location: Sec. 20 Twp. 23S Rge. 19S Co. Edwards State KS

Interval Tested 4498 - 4578 Zone Tested Mississippi  
 Anchor Length 80 Drill Pipe Run 4244 Mud Wt. 9.2  
 Top Packer Depth 4493 Drill Collars Run 247.29 Vis 416  
 Bottom Packer Depth 4498 Wt. Pipe Run 20000 WL 9.2  
 Total Depth 4578 Chlorides 4600 ppm System LCM .5

Blow Description 1st open weak surface blow throughout.  
1st shut in - no blow back.  
2nd open - Dead flushed fool no help.  
2nd shut in - No blow back.

Rec	Feet of	%gas	%oil	%water	%mud
<u>10</u>	<u>mudd</u>			<u>100</u>	
Rec	Feet of	%gas	%oil	%water	%mud
Rec	Feet of	%gas	%oil	%water	%mud
Rec	Feet of	%gas	%oil	%water	%mud
Rec	Feet of	%gas	%oil	%water	%mud

Rec Total 10 BHT \_\_\_\_\_ Gravity \_\_\_\_\_ API RW \_\_\_\_\_ @ \_\_\_\_\_ °F Chlorides \_\_\_\_\_ ppm

(A) Initial Hydrostatic 2280  Test 1250 T-On Location 5:00pm  
 (B) First Initial Flow 59  Jars 250 T-Started 5:54pm  
 (C) First Final Flow 67  Safety Joint 75 T-Open 8:02pm  
 (D) Initial Shut-In 528  Circ Sub \_\_\_\_\_ T-Pulled 11:02pm  
 (E) Second Initial Flow 68  Hourly Standby \_\_\_\_\_ T-Out \_\_\_\_\_  
 (F) Second Final Flow 76  Mileage 107 84rt 130.20 Comments loaded tools 10/7 9:00  
 (G) Final Shut-In 324  Sampler \_\_\_\_\_ 130.20  
 (H) Final Hydrostatic 2094  Straddle \_\_\_\_\_  Ruined Shale Packer \_\_\_\_\_  
 Shale Packer \_\_\_\_\_  Ruined Packer \_\_\_\_\_  
 Extra Packer \_\_\_\_\_  Extra Copies \_\_\_\_\_  
 Extra Recorder \_\_\_\_\_ Sub Total 800  
 Day Standby 1d 7.5h Total 2635.40  
 Accessibility \_\_\_\_\_ MP/DST Disc't \_\_\_\_\_  
 Sub Total 1835.40

Approved By \_\_\_\_\_ Our Representative Dustin Ellis

Trilobite Testing Inc. shall not be liable for damaged of any kind of the property or personnel of the one for whom a test is made, or for any loss suffered or sustained, directly or indirectly, through the use of its equipment, or its statements or opinion concerning the results of any test, tools lost or damaged in the hole shall be paid for at cost by the party for whom the test is made.