



**341231L**  
CRD NO.

# PRO-STAKE

LLC

Construction Site Staking

P.O. Box 2324 Garden City, Kansas 67846  
Office/Fax: (620) 276-6159 – Cell: (620) 272-1499  
burt@pro-stakellc.kscoxmail.com

**12343**  
INVOICE NO.



**Murfin Drilling Company, Inc.**  
OPERATOR

**Abell Ranch B #3-31**  
LEASE NAME

**Gove County, KS**  
COUNTY

**31**      **12s**      **30w**  
**Sec.**      **Twp.**      **Rng.**

**1650' FNL - 1160' FWL**  
LOCATION SPOT

**SCALE:** 1' = 1000'  
**DATE STAKED:** Dec. 2<sup>nd</sup>, 2014  
**MEASURED BY:** Kent C.  
**DRAWN BY:** Norby S.  
**AUTHORIZED BY:** Shauna G.

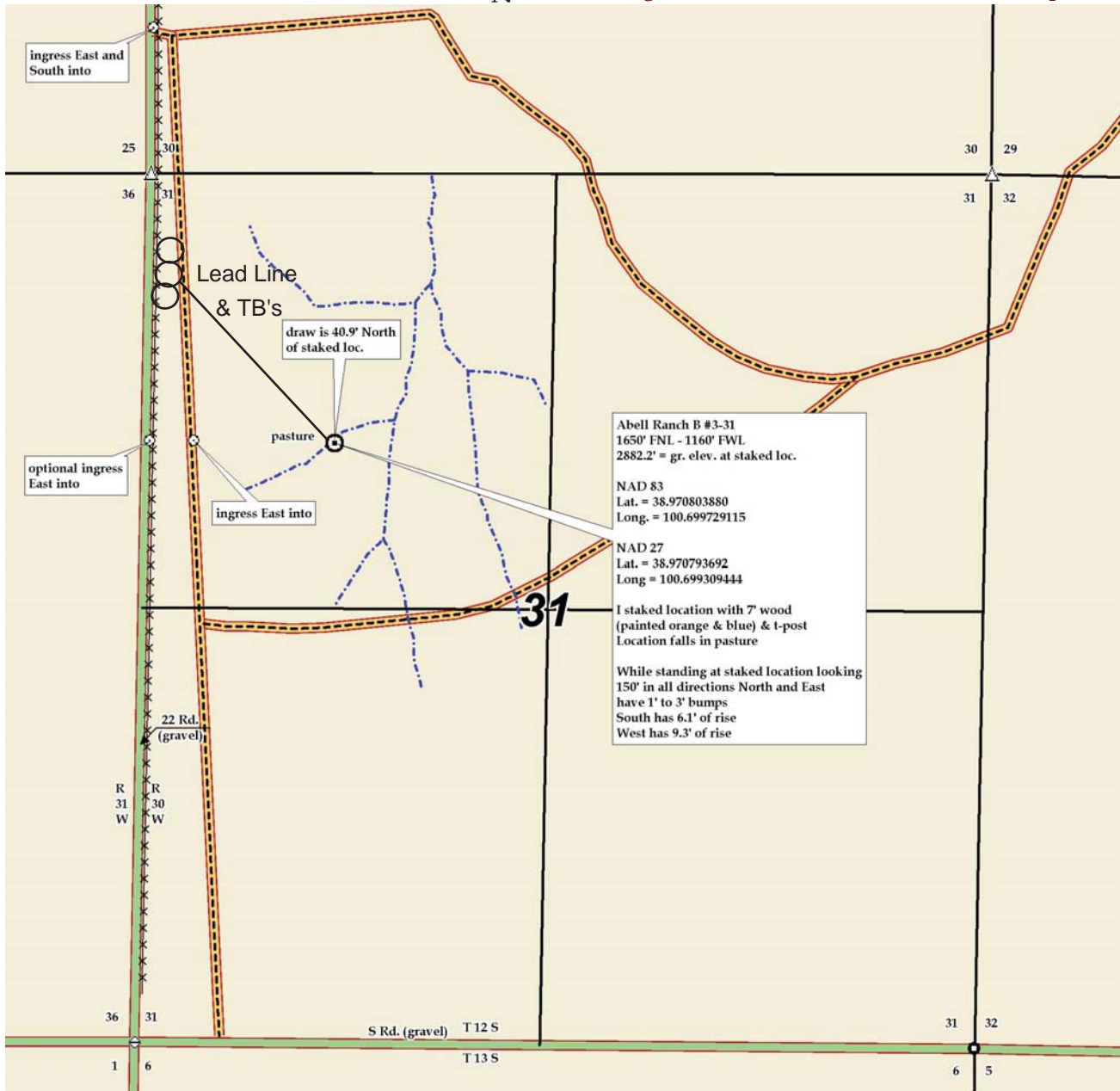
**GR. ELEVATION: 2882.2'**

*This drawing does not constitute a monumented survey or a land survey plat. This drawing is for construction purposes only.*



**DIRECTIONS:** From the South side of Oakley, KS at the intersection of Hwy 40 and Hwy 83 South - Now go 7 miles South on Hwy 83 - Now go 2 miles East on Wagon Rd. - Now go 6 miles East on Go W - Now go 2.8 miles to ingress East and South into - Now go 0.2 mile East and South on trail / old runway, which is approx. 0.1 mile East on the NW corner of section 31-12s-30w - Now go 0.3 mile South on trail / old runway to ingress East into - Now go approx. 870' East through pasture, into staked location.

**Final ingress must be verified with landowner or operator.**





**341231L**  
CRD NO.

# PRO-STAKE

LLC

Construction Site Staking

P.O. Box 2324 Garden City, Kansas 67846  
Office/Fax: (620) 276-6159 – Cell: (620) 272-1499  
burt@pro-stakellc.kscoxmail.com

**12343**  
INVOICE NO.



**Murfin Drilling Company, Inc.**  
OPERATOR

**Abell Ranch B #3-31**  
LEASE NAME

**Gove County, KS**  
COUNTY

**31 12s 30w**  
Sec. Twp. Rng.

**1650' FNL - 1160' FWL**  
LOCATION SPOT

SCALE: **1' = 1000'**  
DATE STAKED: **Dec. 2<sup>nd</sup>, 2014**  
MEASURED BY: **Kent C.**  
DRAWN BY: **Norby S.**  
AUTHORIZED BY: **Shauna G.**

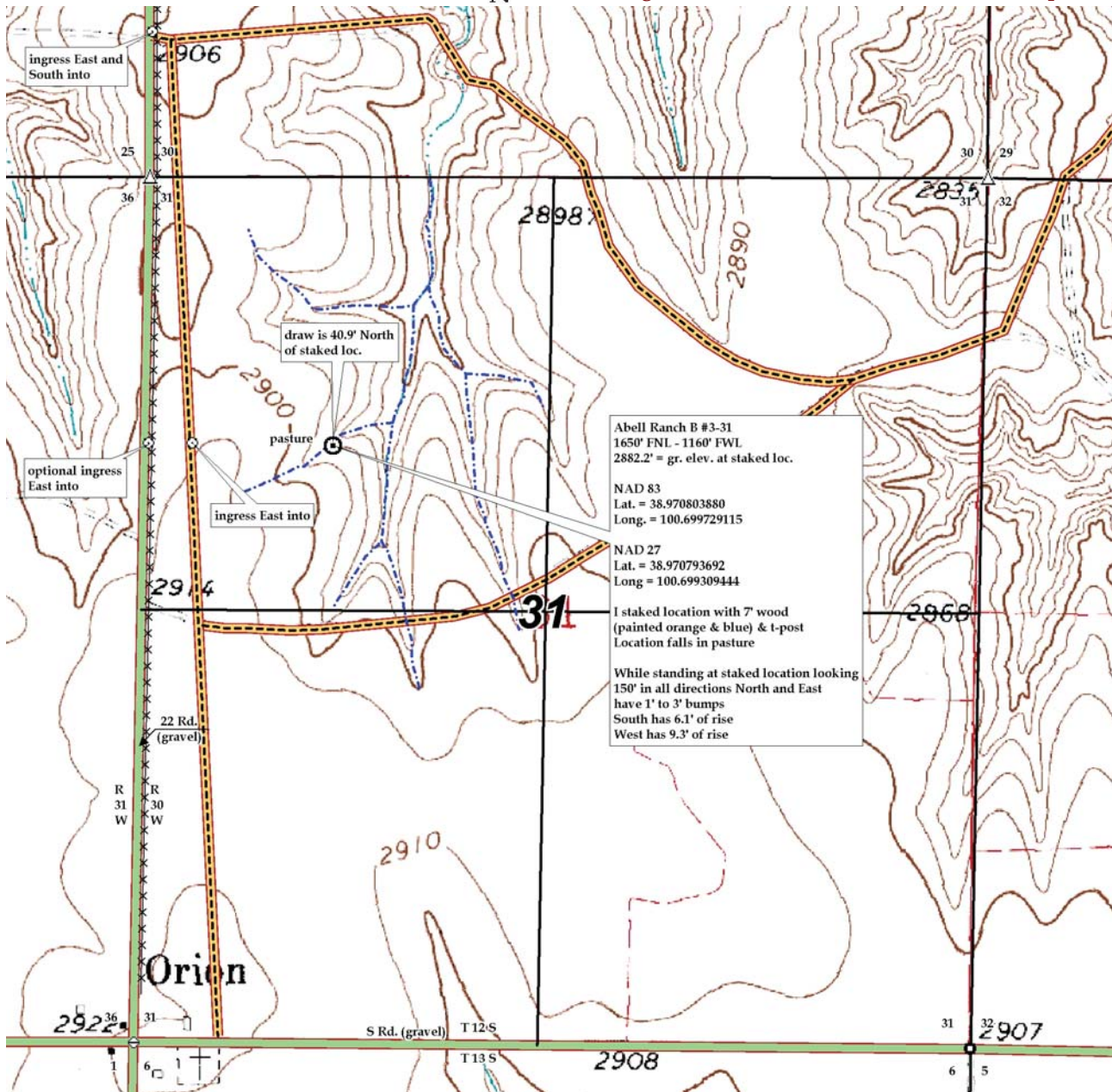
GR. ELEVATION: **2882.2'**

*This drawing does not constitute a monumented survey or a land survey plat. This drawing is for construction purposes only.*



**DIRECTIONS:** From the South side of Oakley, KS at the intersection of Hwy 40 and Hwy 83 South - Now go 7 miles South on Hwy 83 - Now go 2 miles East on Wagon Rd. - Now go 6 miles East on Go W - Now go 2.8 miles to ingress East and South into - Now go 0.2 mile East and South on trail / old runway, which is approx. 0.1 mile East on the NW corner of section 31-12s-30w - Now go 0.3 mile South on trail / old runway to ingress East into - Now go approx. 870' East through pasture, into staked location.

**Final ingress must be verified with landowner or operator.**



Abell Ranch B #3-31  
1650' FNL - 1160' FWL  
2882.2' = gr. elev. at staked loc.  
NAD 83  
Lat. = 38.970803880  
Long. = 100.699729115  
NAD 27  
Lat. = 38.970793692  
Long. = 100.699309444  
1 staked location with 7' wood  
(painted orange & blue) & t-post  
Location falls in pasture  
While standing at staked location looking  
150' in all directions North and East  
have 1' to 3' bumps  
South has 6.1' of rise  
West has 9.3' of rise