

API: 15-183-21000-00-00
 COMPANY: The Bill Bowman Oil Co
 Well: Simmer SW #3
 FIELD: Little
 LOCATION: 990' FSL & 3960' FEL
 SEC: 17 TWP: 15 RANG: 32W
 COUNTY: Rawlins STATE: Kansas

PRODUCTION: SWD
 ELEVATION: 2936
 DEPTH: 4513
 OPERATOR: White Knight Drilling Co
 CONTRACTOR: White Knight Drilling Co
 DATE: 10-2-14
 TIME: 10:31 AM
 WELL DEPTH: 4513
 TOTAL DEPTH: 4513

FORMATION TOPS AND STRUCTURAL POSITION
 FORMATION SAMPLE ELEVATION DEPTH
 Anhydrite 2215 (290)
 Base/Anhydrite 2751
 NEVA 3279 (-372)
 Foraker 3410 (-477)
 Tankia 3493 (-557)
 Tappan 3695 (-652)
 Oread 3791 (-659)
 Heebner 3808 (-672)
 Lansing 3845 (-709)
 Cherokee Shale 4249 (-1175)
 Cherokee 4322 (-1299)
 Arbuckle 4446 (-1510)

| FORMATION TOPS AND STRUCTURAL POSITION | FORMATION | SAMPLE ELEVATION | DEPTH | STRUCTURAL POSITION |
|--|-----------|------------------|---------|---------------------|
| Base/Anhydrite | 2751 | 2751 | (290) | -3 |
| NEVA | 3279 | 3279 | (-372) | -3 |
| Foraker | 3410 | 3410 | (-477) | -3 |
| Tankia | 3493 | 3493 | (-557) | -1 |
| Tappan | 3695 | 3695 | (-652) | -1 |
| Oread | 3791 | 3791 | (-659) | -1 |
| Heebner | 3808 | 3808 | (-672) | -1 |
| Lansing | 3845 | 3845 | (-709) | -1 |
| Cherokee Shale | 4249 | 4249 | (-1175) | -2 |
| Cherokee | 4322 | 4322 | (-1299) | -2 |
| Arbuckle | 4446 | 4446 | (-1510) | -2 |

DRILL RECORD

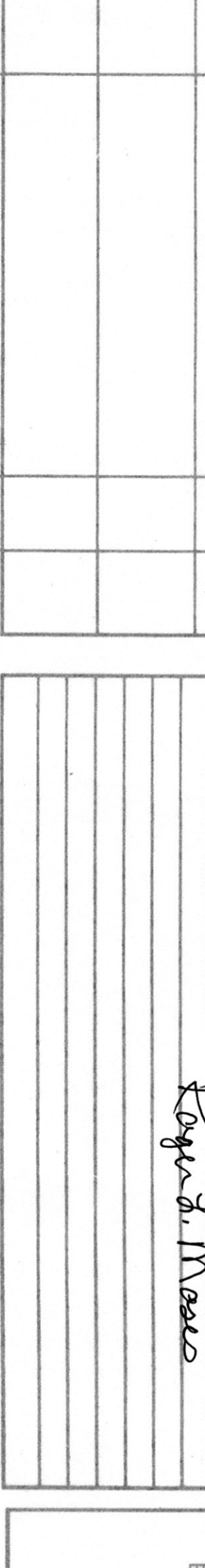
| DATE | DEPTH | NO | SEC | WGT | TIME | LOG | REMARKS |
|---------|---------|----|-------|-----|-------|------|---------|
| 9-30-14 | Spudded | 1 | 13.47 | BR | 10.41 | 2.97 | 3 |
| 10-1-14 | 2.64 | 2 | 13.58 | SMH | 6.50 | 2.56 | 20.28 |
| 10-2-14 | 6.90 | 3 | 7.78 | SMH | 6.50 | 2.56 | 20.28 |
| 10-3-14 | 8.40 | 4 | | | | | |
| 10-3-14 | 13.15 | 5 | | | | | |
| 10-3-14 | Legging | | | | | | |

DRILL STEM TESTS

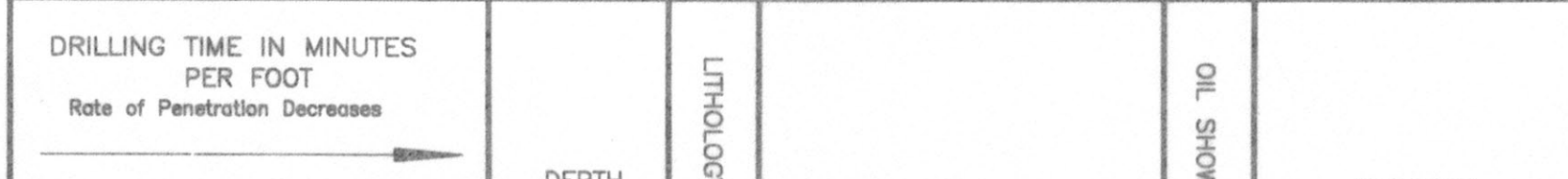
| NO | DEPTH | WGT | TIME | LOG | REMARKS |
|----|-------|-----|------|-----|----------|
| | | | | | None Ran |

Based on structural position and favorable shows, 5' casing was set and cemented in well might be completed as SWD

Thank you
 Roger J. Masco



LEGEND



| DEPTH | LITHOLOGY | SAMPLE DESCRIPTIONS | REMARKS |
|-------|-----------|---|---------------------------|
| 10 | | Anhydrite 2215 (290) | |
| 20 | | | |
| 30 | | | |
| 40 | | | |
| 50 | | Base/Anhydrite 2751 | |
| 3200 | | SH: red, rust | Displace Mud System 3150' |
| 10 | | LS: wht, f-med barren | |
| 20 | | | |
| 30 | | LS: wht, f-med xln barren | VIS 58 WT 8.8 LCM 2 |
| 40 | | SH: red, rust-gry | |
| 50 | | LS: wht, f-med xln | |
| 60 | | SH: red, silty | |
| 70 | | LS: wht-1 tan, f-med ind xln, part Pelletoid, bossy NS. | |
| 80 | | LS: s ala, pesty NS | |
| 90 | | | |
| 3300 | | LS: wht-gry, f-med xln ind xln, part NS. | VIS 59 WT 8.8 LCM 2 |
| 10 | | SH: red-brown gry, med silty. | |
| 20 | | | |
| 30 | | SH: red, gry | |
| 40 | | LS: wht-gry, f-med xln ind xln barren | |
| 50 | | SH: red, gry | |
| 60 | | LS: wht-gry, f-med xln ind xln barren | |
| 70 | | SH: red, gry | |
| 80 | | LS: wht-gry, f-med xln ind xln barren | |
| 90 | | SH: red, gry | |
| 3400 | | SH: red, gry | |
| 10 | | SH: red, gry | |
| 20 | | LS: off-wht-gry, f-med xln weakly, NS | VIS 59 WT 8.8 LCM 2 |
| 30 | | LS: s ala | |
| 40 | | LS: gry, f-xln, poor ind xln, part NS | |
| 50 | | SH: red, gry | |
| 60 | | LS: tan-gry, f-med xln ind xln barren | |
| 70 | | LS: wht-gry, f-med xln ind xln barren | |
| 80 | | SH: gry, med, pty | VIS 55 WT 8.9 LCM 3 |
| 90 | | LS: wht-tan-gry, f-med xln ind xln barren | |
| 3500 | | LS: wht-tan-gry, f-med xln ind xln barren | |
| 10 | | LS: s ala | |
| 20 | | LS: wht-gry-brown, f-med xln, ind xln barren | |
| 30 | | LS: s ala | |
| 40 | | LS: wht-gry-brown, f-med xln, ind xln barren | |
| 50 | | SH: vari-clrd, med pty | VIS 68 WT 8.9 LCM 3 |
| 60 | | LS: wht-tan, f-med xln ind xln barren | |
| 70 | | LS: s ala | |
| 80 | | LS: off-wht-tan, f-med xln ind xln barren | |
| 90 | | SH: vari-clrd, med pty | |
| 3600 | | LS: off-wht-tan, f-med xln ind xln barren | |
| 10 | | SH: vari-clrd, med pty | |
| 20 | | LS: off-wht-tan, f-med xln ind xln barren | |
| 30 | | SH: red, rust, few long pty | |
| 40 | | LS: off-wht-tan, f-med xln ind xln barren | |
| 50 | | SH: gry, med, pty | VIS 55 WT 9.0 LCM 2 |
| 60 | | LS: wht-1 tan, part pink very dms. Fe & NO NS | |
| 70 | | SH: vari-clrd, med pty | |
| 80 | | LS: wht-1 tan, part pink very dms. Fe & NO NS | |
| 90 | | SH: vari-clrd, med pty | |
| 3700 | | LS: wht-1 tan, part pink very dms. Fe & NO NS | |
| 10 | | LS: s ala, NO NS | |
| 20 | | LS: wht-tan, part pink very dms. Fe & NO NS | |
| 30 | | SH: vari-clrd, med pty | VIS 54 WT 9.0 LCM 2 |
| 40 | | LS: wht-tan, part pink very dms. Fe & NO NS | |
| 50 | | SH: vari-clrd, med pty | |
| 60 | | LS: wht-tan, part pink very dms. Fe & NO NS | |
| 70 | | SH: vari-clrd, med pty | |
| 80 | | LS: wht-tan, part pink very dms. Fe & NO NS | |
| 90 | | SH: vari-clrd, med pty | |
| 3800 | | LS: wht-tan, part pink very dms. Fe & NO NS | |
| 10 | | SH: vari-clrd, med pty | VIS 58 WT 9.1 LCM 2 |
| 20 | | LS: wht-tan, part pink very dms. Fe & NO NS | |
| 30 | | SH: vari-clrd, med pty | |
| 40 | | LS: wht-tan, part pink very dms. Fe & NO NS | |
| 50 | | SH: vari-clrd, med pty | |
| 60 | | LS: wht-tan, part pink very dms. Fe & NO NS | |
| 70 | | SH: vari-clrd, med pty | |
| 80 | | LS: wht-tan, part pink very dms. Fe & NO NS | |
| 90 | | SH: vari-clrd, med pty | |
| 3880 | | LS: wht-tan, part pink very dms. Fe & NO NS | |
| 10 | | SH: vari-clrd, med pty | VIS 58 WT 9.1 LCM 2 |
| 20 | | LS: wht-tan, part pink very dms. Fe & NO NS | |
| 30 | | SH: vari-clrd, med pty | |
| 40 | | LS: wht-tan, part pink very dms. Fe & NO NS | |
| 50 | | SH: vari-clrd, med pty | |
| 60 | | LS: wht-tan, part pink very dms. Fe & NO NS | |
| 70 | | SH: vari-clrd, med pty | |
| 80 | | LS: wht-tan, part pink very dms. Fe & NO NS | |
| 90 | | SH: vari-clrd, med pty | |
| 3900 | | LS: wht-tan, part pink very dms. Fe & NO NS | |
| 10 | | SH: vari-clrd, med pty | VIS 51 WT 9.2 LCM 3 1/2 |
| 20 | | LS: wht-tan, part pink very dms. Fe & NO NS | |
| 30 | | SH: vari-clrd, med pty | |
| 40 | | LS: wht-tan, part pink very dms. Fe & NO NS | |
| 50 | | SH: vari-clrd, med pty | |
| 60 | | LS: wht-tan, part pink very dms. Fe & NO NS | |
| 70 | | SH: vari-clrd, med pty | |
| 80 | | LS: wht-tan, part pink very dms. Fe & NO NS | |
| 90 | | SH: vari-clrd, med pty | |
| 4000 | | LS: wht-tan, part pink very dms. Fe & NO NS | |
| 10 | | SH: vari-clrd, med pty | VIS 58 WT 9.2 LCM 3 1/2 |
| 20 | | LS: wht-tan, part pink very dms. Fe & NO NS | |
| 30 | | SH: vari-clrd, med pty | |
| 40 | | LS: wht-tan, part pink very dms. Fe & NO NS | |
| 50 | | SH: vari-clrd, med pty | |
| 60 | | LS: wht-tan, part pink very dms. Fe & NO NS | |
| 70 | | SH: vari-clrd, med pty | |
| 80 | | LS: wht-tan, part pink very dms. Fe & NO NS | |
| 90 | | SH: vari-clrd, med pty | |
| 4100 | | LS: wht-tan, part pink very dms. Fe & NO NS | |
| 10 | | SH: vari-clrd, med pty | VIS 57 WT 9.3 LCM 4 |
| 20 | | LS: wht-tan, part pink very dms. Fe & NO NS | |
| 30 | | SH: vari-clrd, med pty | |
| 40 | | LS: wht-tan, part pink very dms. Fe & NO NS | |
| 50 | | SH: vari-clrd, med pty | |
| 60 | | LS: wht-tan, part pink very dms. Fe & NO NS | |
| 70 | | SH: vari-clrd, med pty | |
| 80 | | LS: wht-tan, part pink very dms. Fe & NO NS | |
| 90 | | SH: vari-clrd, med pty | |
| 4200 | | LS: wht-tan, part pink very dms. Fe & NO NS | |
| 10 | | SH: vari-clrd, med pty | VIS 51 WT 9.2 LCM 3 1/2 |
| 20 | | LS: wht-tan, part pink very dms. Fe & NO NS | |
| 30 | | SH: vari-clrd, med pty | |
| 40 | | LS: wht-tan, part pink very dms. Fe & NO NS | |
| 50 | | SH: vari-clrd, med pty | |
| 60 | | LS: wht-tan, part pink very dms. Fe & NO NS | |
| 70 | | SH: vari-clrd, med pty | |
| 80 | | LS: wht-tan, part pink very dms. Fe & NO NS | |
| 90 | | SH: vari-clrd, med pty | |
| 4300 | | LS: wht-tan, part pink very dms. Fe & NO NS | |
| 10 | | SH: vari-clrd, med pty | VIS 60+ WT 9.3 LCM 4 |
| 20 | | LS: wht-tan, part pink very dms. Fe & NO NS | |
| 30 | | SH: vari-clrd, med pty | |
| 40 | | LS: wht-tan, part pink very dms. Fe & NO NS | |
| 50 | | SH: vari-clrd, med pty | |
| 60 | | LS: wht-tan, part pink very dms. Fe & NO NS | |
| 70 | | SH: vari-clrd, med pty | |
| 80 | | LS: wht-tan, part pink very dms. Fe & NO NS | |
| 90 | | SH: vari-clrd, med pty | |
| 4400 | | LS: wht-tan, part pink very dms. Fe & NO NS | |
| 10 | | SH: vari-clrd, med pty | VIS 58 WT 9.2 LCM 5 |
| 20 | | LS: wht-tan, part pink very dms. Fe & NO NS | |
| 30 | | SH: vari-clrd, med pty | |
| 40 | | LS: wht-tan, part pink very dms. Fe & NO NS | |
| 50 | | SH: vari-clrd, med pty | |
| 60 | | LS: wht-tan, part pink very dms. Fe & NO NS | |
| 70 | | SH: vari-clrd, med pty | |
| 80 | | LS: wht-tan, part pink very dms. Fe & NO NS | |
| 90 | | SH: vari-clrd, med pty | |
| 4500 | | LS: wht-tan, part pink very dms. Fe & NO NS | |
| 10 | | SH: vari-clrd, med pty | VIS 58 WT 9.2 LCM 6 |
| 20 | | LS: wht-tan, part pink very dms. Fe & NO NS | |
| 30 | | SH: vari-clrd, med pty | |
| 40 | | LS: wht-tan, part pink very dms. Fe & NO NS | |
| 50 | | SH: vari-clrd, med pty | |
| 60 | | LS: wht-tan, part pink very dms. Fe & NO NS | |
| 70 | | SH: vari-clrd, med pty | |
| 80 | | LS: wht-tan, part pink very dms. Fe & NO NS | |
| 90 | | SH: vari-clrd, med pty | |
| 4513 | | LS: wht-tan, part pink very dms. Fe & NO NS | |

CONTRACTOR: White Knight Drilling Co
 LEASE: Simmer SW #3
 ELEVATION: 2936
 LOCATION: 990' FSL & 3960' FEL
 SEC: 17 TWP: 15 RANG: 32W
 COUNTY: Rawlins STATE: Kansas