



Geologist's Report

Company: American Warrior Inc.
Lease: Hoelscher #3-10
Field: Unknown
Location: SE-NW-NW-SE (1991 FSL & 2284 FEL)
Sec: 10 **Twsp:** 18S **Rge:** 10W
County: Rice **State:** Kansas
GL: 1785' **KB:** 1793'

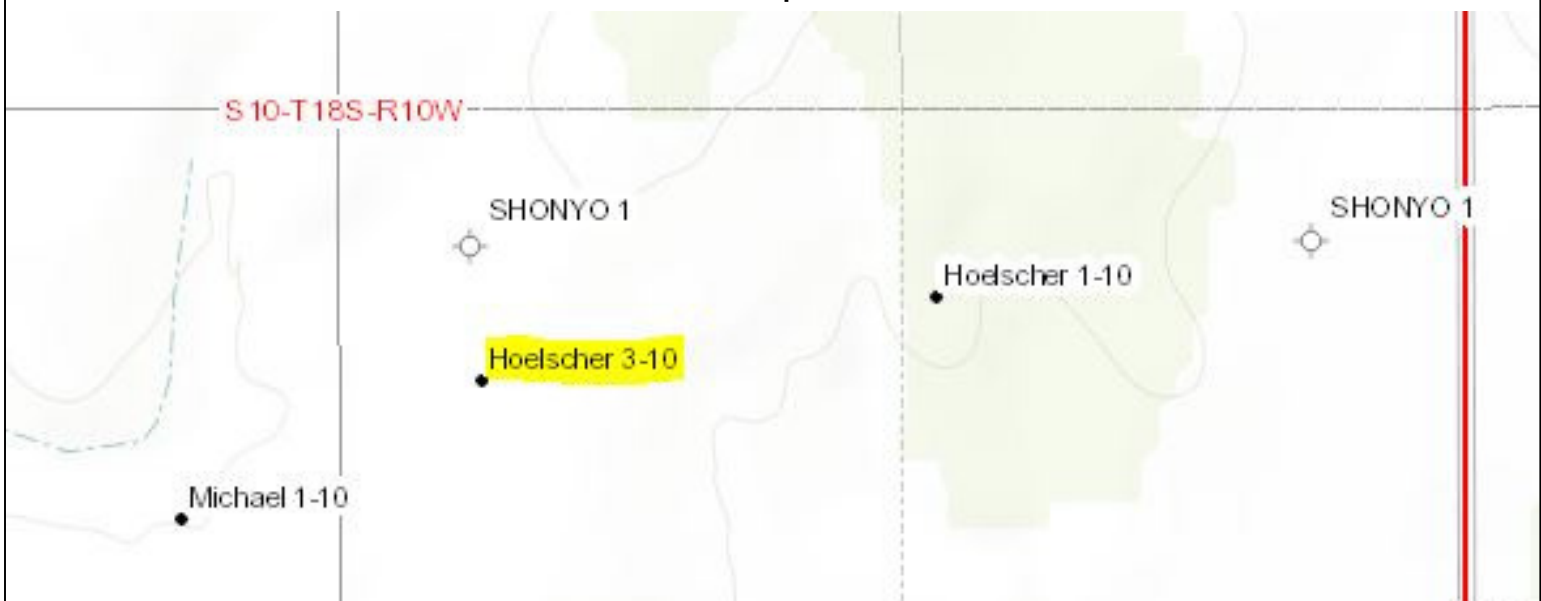
Contractor: Duke Drilling Rig #8
Spud: 10/16/14 **Comp:** 10/22/14
RTD: 3400' **LTD:** 3397'
Mud Up: 2600' **Type Mud:** Chemical/Displaced

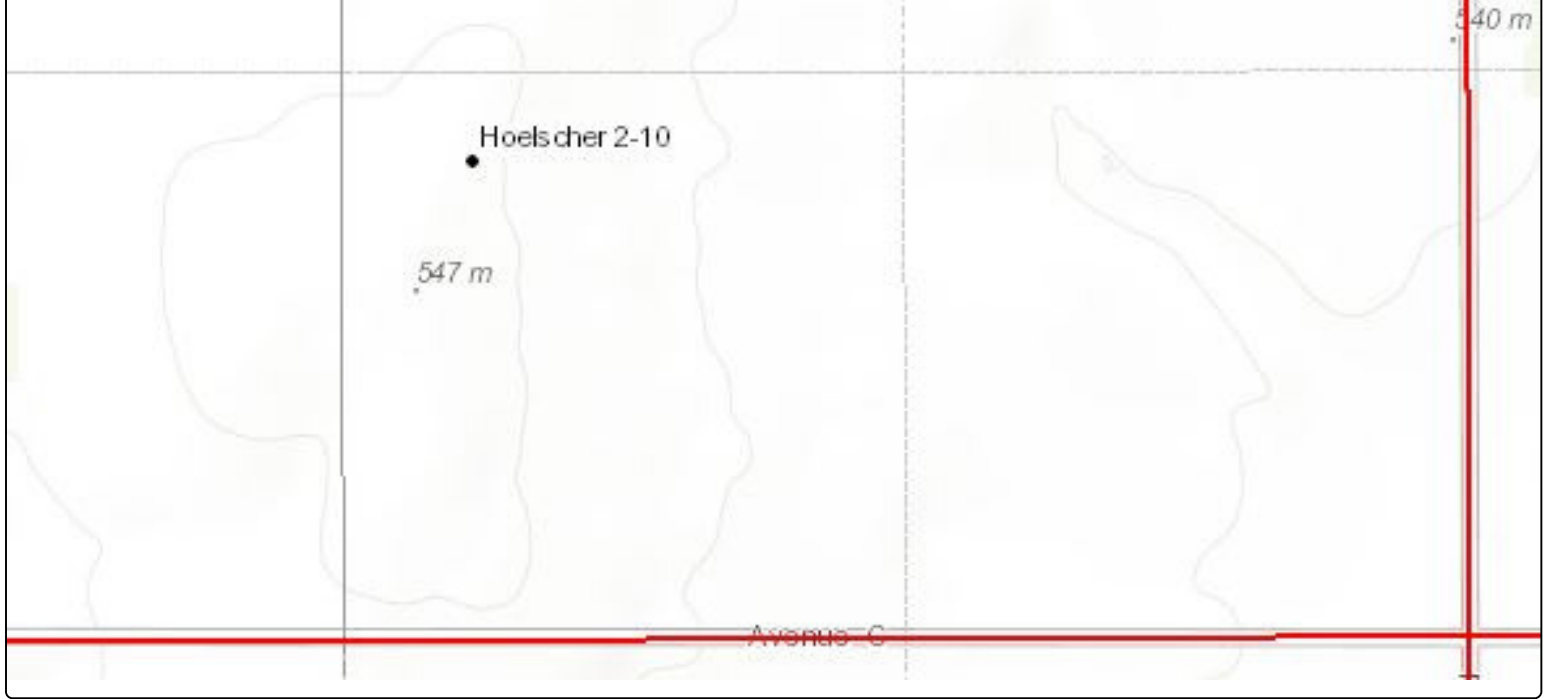
Samples Saved From: 2700' to RTD
Drilling Time Kept From: 2800' to RTD
Samples Examined From: 2800' to RTD
Geological Supervision From: 2800' to RTD
Geologist on Well: Clint Musgrove

Surface Casing: 8 5/8" @ 413'
Production: 5 1/2 @ 3395'







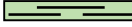


Logs: By Pioneer: CNL/CDL, DIL, & MEL

Map







ROCK TYPES

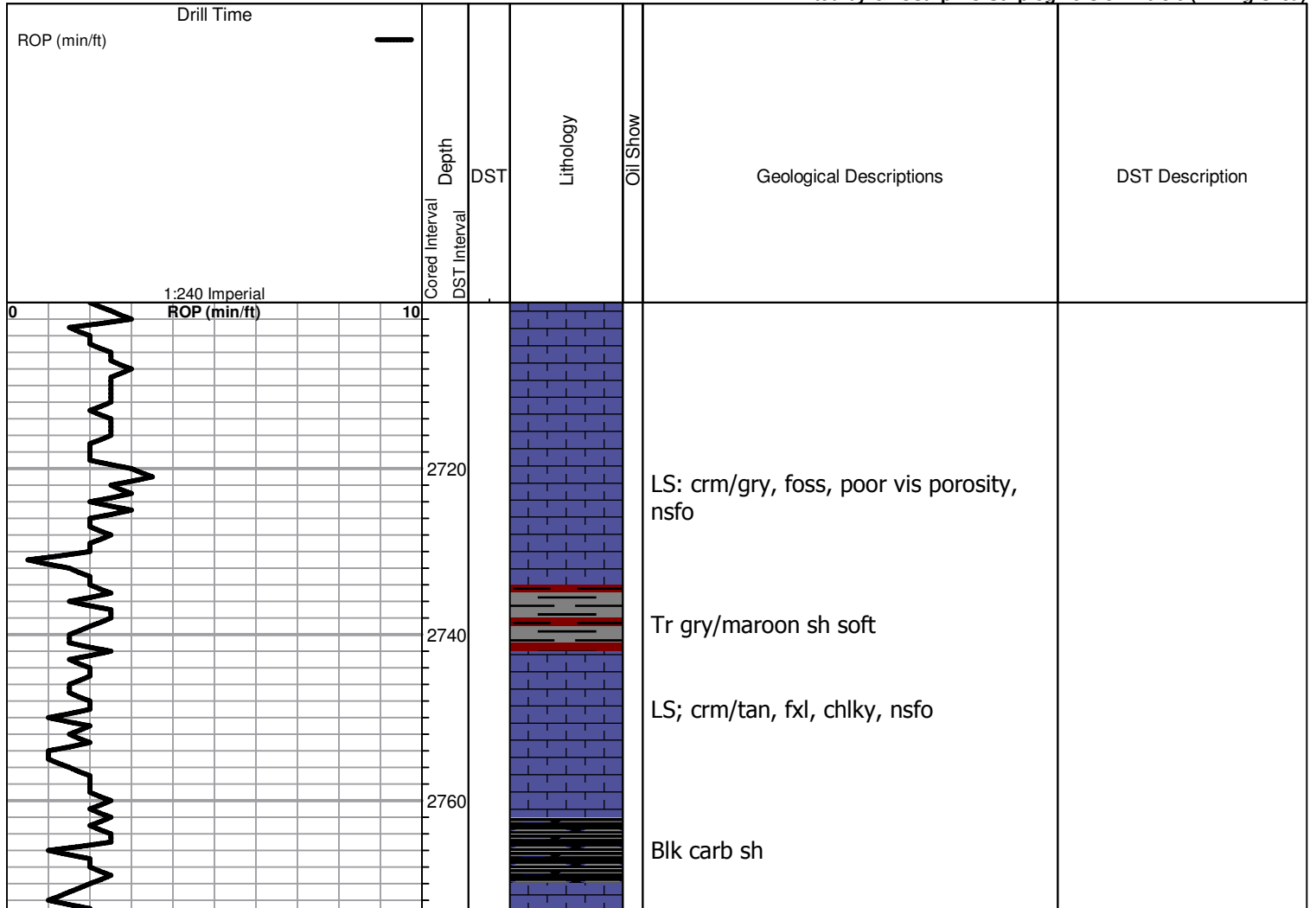
 Chtcongl	 Lmst fw<7	 shale, gry	 shale, red	 Ss
 Dolprim	 shale, grn	 Carbon Sh	 Shcol	

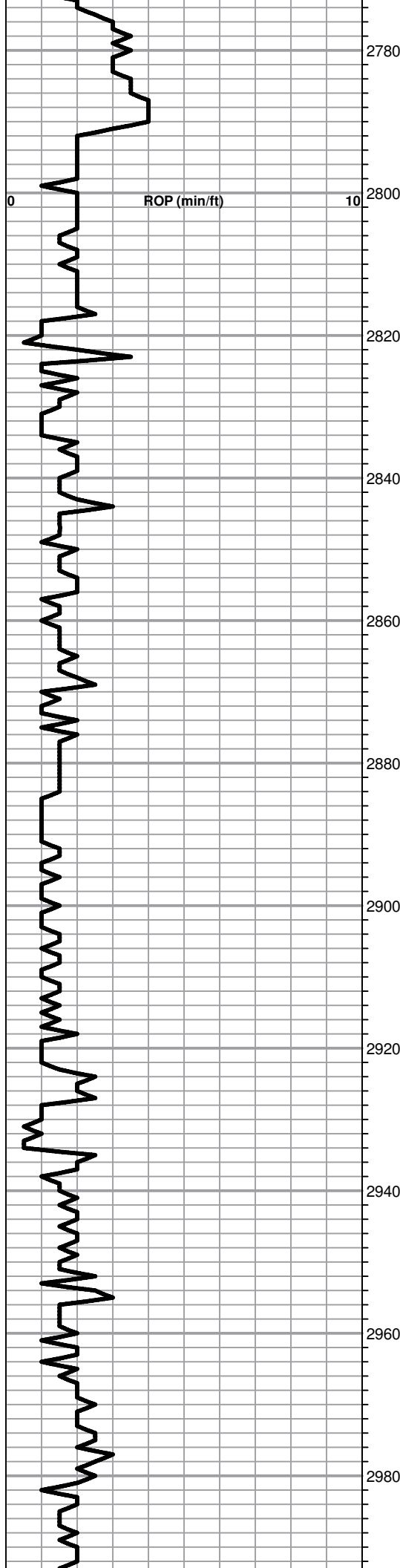
OTHER SYMBOLS

DST

 DST Int
 DST alt

Printed by GEOstrip VC Striplog version 4.0.8.9 (www.grsi.ca)





LS; crm/tan, fxl, foss in part, poor vis porosity nsfo

LS; crm/tan, fxl, ool, foss, poor vis porosity, nsfo

Gry sh soft

Heebner
 Sample 2817.0 (-1024.0)
 Log 2817.0 (-1024.0)

Blk carb sh

Toronto
 Sample 2831.0 (-1038.0)
 Log 2838.0 (-1045.0)

LS; crm/tan, fxl, foss, poor vis porosity

Douglas
 Sample 2844.0 (-1051.0)
 Log 2848.0 (-1055.0)

Sh, gry, silty + mica

AA + tr sd

Sh gry, greenish + mica
 well sorted, nsfo, no odor

Sh- gry/grn, silty + mica

AA + gry/ maroon sh

AA

Brown Lime
 Sample 2935.0 (-1142.0)
 Log 2936.0 (-1143.0)

LS; tan/brn, fxl, chlky, poor vis porosity, nsfo + tr gr/red sh

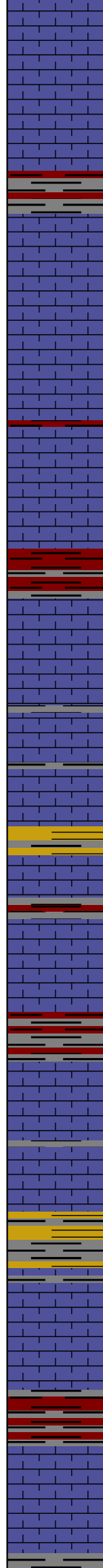
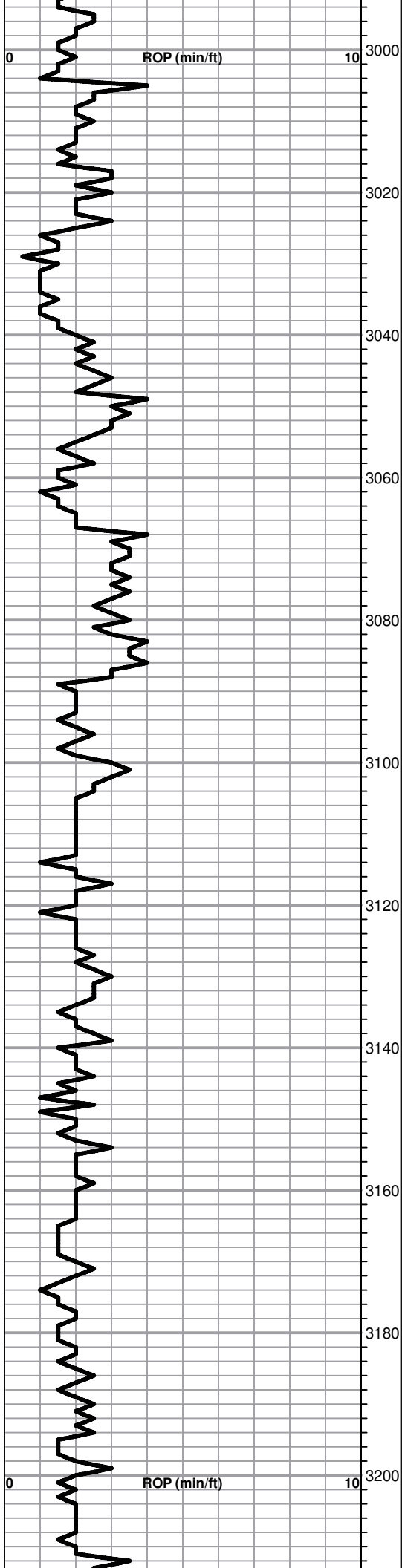
Lansing
 Sample 2952.0 (-1159.0)
 Log 2853.0 (-1160.0)

LS; crm, fxl, foss, nsfo, no odor

Gr sh soft

LS: crm, fxl, cherty in part,
 Tr gry/red sh soft

- 1793 KB -



LS; crm, fxl, chlky, poor vis porosity, nsfo

LS: crm, fxl, foss, poor vis porosity, nsfo

Tr gry sh

LS; crm/gry, fxl, foss, scatt vis porosity, gas bubbles when broken, nsfo, odor??

LS; crm/gry, foss, scatt vis porosity, nsfo

LS; crm/gry, foss, scatt vis porosity, oom, nsfo, no odor

Tr gry sh soft

LS; crm, fxl, cherty, poor vis porosity

LS: crm/tan, fxl, foss, oom, scatt ppt oom porosity

VC sh, blk carb/ sility greenish/gry/red

LS; crm, fxl, chlky, oom in part, nsfo, no odor

LS: crm, fxl, foss, ppt oom porosity, nsfo, no odor

Sh gry/red soft

LS' crm, fxl, chlky, scatt vis porosity, nsfo

LS; crm, fxl, ool, foss in part, nsfo

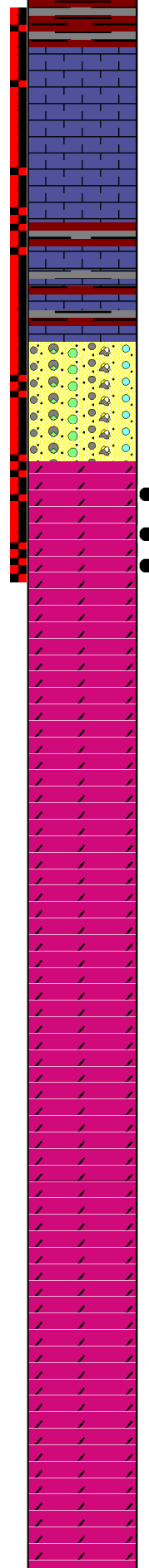
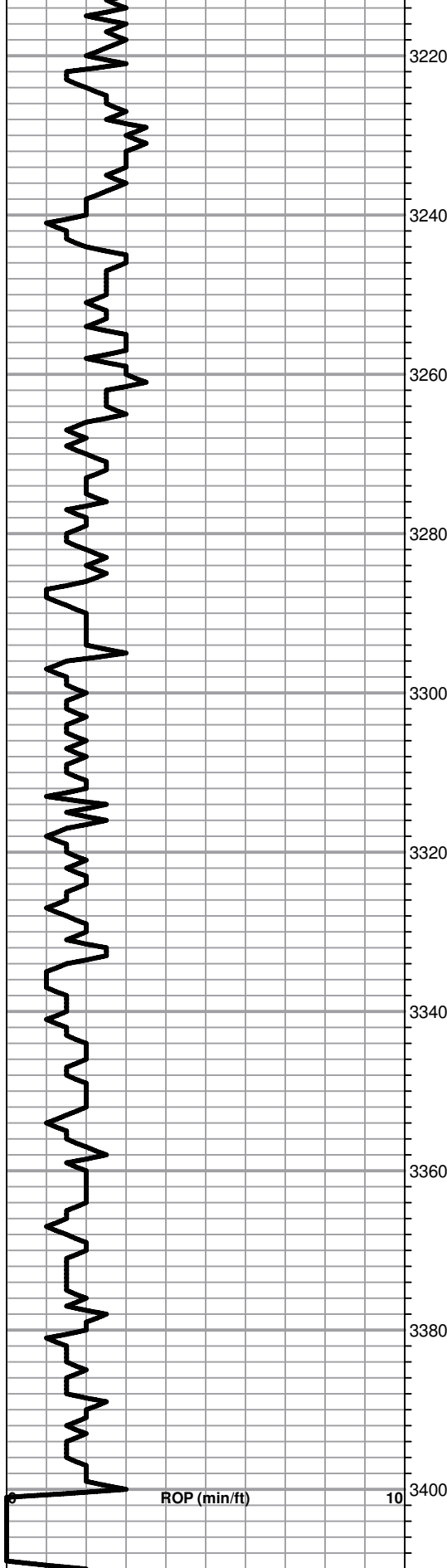
VC sh soft

LS: crm, fxl, foss, chlky in part, ft brn stn nsfo

Tr gr/maroon sh

LS; crm/gry, fxl, foss, poor vis porosity, nsfo

LS; crm, cherty, chlky, scatt vis porosity



porosity

Tr gry/ maroon sh sfot

LS; crm, fxl, cherty, poor vis porosity, nsfo

BKC
Sample 3236.0 (-1443.0)
Log 3237.0 (-1444.0)

LS; wh/crm, fxl, dense, poor vis porosity

Cong
Sample 3261.0 (-1468.0)
Log 3258.0 (-1465.0)

VC chert + LS crm, fxl dense

● **Arbuckle**
 ● **Sample 3276.0 (-1483.0)**
 ● **Log 3270.0 (-1477.0)**

Dol: tan/crm succ in part, poor iner xln porosity, ft brn stn, sfo, very ft odor

Dol: tan, fxl, poor iner xln porosity, ft brn stn, sfo, no odor

AA + ft odor

Dol; wh/tan, fxl, poor vis porosity, nsfo no odor

aa no odor nsfo

Dol: wh/tan, f-med xln, no odor, nsfo

aa

Dol; wh/gry, fxl, dense, med-xln, no odor, nsfo

RTD
Sample 3400.0 (-1607.0)
Log 3397.0 (-1604.0)

DST #1 3216-3286
30-30-45-60

Initial Opening:
 Strong BOB 9 mins
 2nd Opening:
 Strong BOB 7 min

Recovery:
 750' Clean Oil
 90' HOCM (3%G, 43%O, 54%M)
 90' OCM (2%G, 24%O, 74%M)

Pressures:
 ISIP: 1125 psi
 FSIP: 1114 psi
 IFP: 78-217 psi
 FFP: 230-413 psi
 HSH: 1599-1563 psi