



## DRILL STEM TEST REPORT

Prepared For: **American Warrior, Inc.**

PO Box 399  
Garden City, KS 67846

ATTN: Kevin Timson

### **Kleystueber #1-3**

### **3-27s-31w Haskell,KS**

Start Date: 2014.11.18 @ 03:31:41

End Date: 2014.11.18 @ 10:31:11

Job Ticket #: 59951                      DST #: 1

Trilobite Testing, Inc  
1515 Commerce Parkway Hays, KS 67601  
ph: 785-625-4778 fax: 785-625-5620

Printed: 2014.11.20 @ 16:50:51

American Warrior, Inc. 3-27s-31w Haskell,KS Kleystueber #1-3 DST # 1 Morrow 2014.11.18



**TRILOBITE  
TESTING, INC**

# DRILL STEM TEST REPORT

American Warrior, Inc.

**3-27s-31w Haskell, KS**

PO Box 399  
Garden City, KS 67846

**Kleystueber #1-3**

Job Ticket: 59951

**DST#: 1**

ATTN: Kevin Timson

Test Start: 2014.11.18 @ 03:31:41

## GENERAL INFORMATION:

Formation: **Morrow**

Deviated: No Whipstock: ft (KB)

Time Tool Opened: 06:15:26

Time Test Ended: 10:31:11

Test Type: Conventional Bottom Hole (Initial)

Tester: Ryan Reynolds

Unit No: 68

**Interval: 4938.00 ft (KB) To 5038.00 ft (KB) (TVD)**

Reference Elevations: 2812.00 ft (KB)

Total Depth: 5038.00 ft (KB) (TVD)

2799.00 ft (CF)

Hole Diameter: 7.88 inches Hole Condition: Fair

KB to GR/CF: 13.00 ft

**Serial #: 8790**

**Inside**

Press@RunDepth: 29.40 psig @ 4975.00 ft (KB)

Capacity: 8000.00 psig

Start Date: 2014.11.18

End Date:

2014.11.18

Last Calib.: 2014.11.18

Start Time: 03:31:46

End Time:

10:31:10

Time On Btm: 2014.11.18 @ 06:15:11

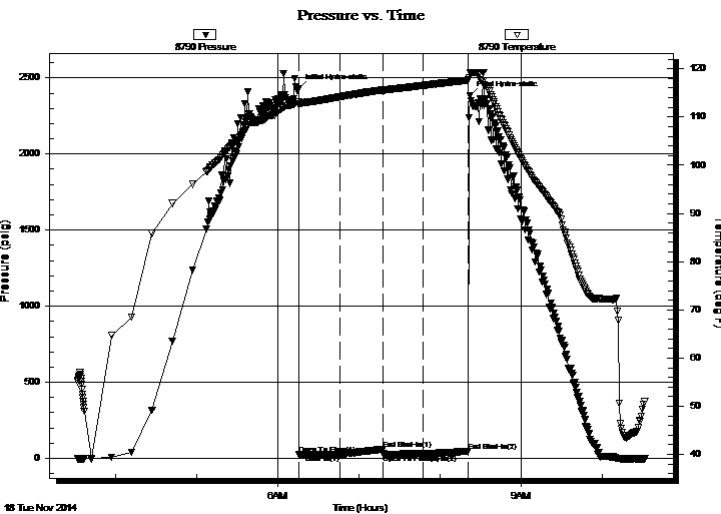
Time Off Btm: 2014.11.18 @ 08:21:56

TEST COMMENT: IF: Weak blow . surf. - 1"

IS: No blow .

FF: Weak surf. blow .

FS: No blow .



## PRESSURE SUMMARY

Time (Min.)	Pressure (psig)	Temp (deg F)	Annotation
0	2428.43	113.26	Initial Hydro-static
1	25.17	112.59	Open To Flow (1)
31	25.61	114.16	Shut-In(1)
62	60.85	115.64	End Shut-In(1)
63	29.64	115.62	Open To Flow (2)
93	29.40	116.54	Shut-In(2)
126	46.66	117.64	End Shut-In(2)
127	2385.06	119.19	Final Hydro-static

## Recovery

Length (ft)	Description	Volume (bbl)
10.00	Drig mud 100%m	0.05

## Gas Rates

Choke (inches)	Pressure (psig)	Gas Rate (m <sup>3</sup> /d)



**TRILOBITE  
TESTING, INC.**

# DRILL STEM TEST REPORT

American Warrior, Inc.

**3-27s-31w Haskell, KS**

PO Box 399  
Garden City, KS 67846

**Kleystueber #1-3**

Job Ticket: 59951 **DST#: 1**

ATTN: Kevin Timson

Test Start: 2014.11.18 @ 03:31:41

## GENERAL INFORMATION:

Formation: **Morrow**

Deviated: No Whipstock: ft (KB)

Time Tool Opened: 06:15:26

Time Test Ended: 10:31:11

Test Type: Conventional Bottom Hole (Initial)

Tester: Ryan Reynolds

Unit No: 68

**Interval: 4938.00 ft (KB) To 5038.00 ft (KB) (TVD)**

Reference Elevations: 2812.00 ft (KB)

Total Depth: 5038.00 ft (KB) (TVD)

2799.00 ft (CF)

Hole Diameter: 7.88 inches Hole Condition: Fair

KB to GR/CF: 13.00 ft

**Serial #: 8792 Outside**

Press@RunDepth: psig @ 4975.00 ft (KB)

Capacity: 8000.00 psig

Start Date: 2014.11.18

End Date: 2014.11.18

Last Calib.: 2014.11.18

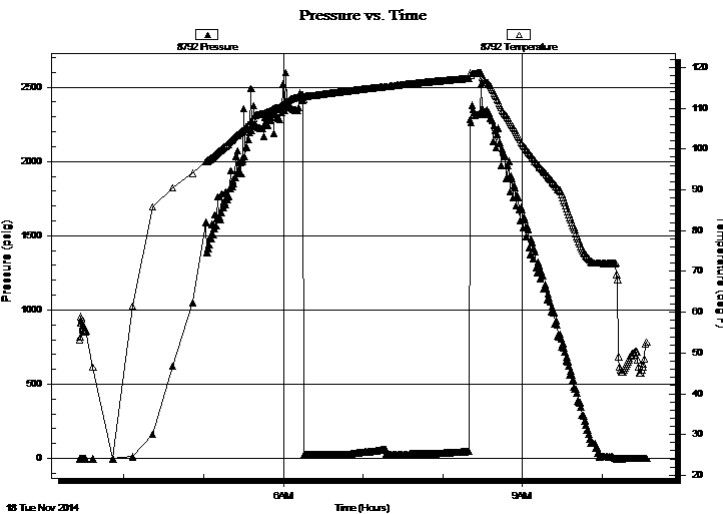
Start Time: 03:26:41

End Time: 10:33:20

Time On Btm:

Time Off Btm:

TEST COMMENT: IF: Weak blow . surf. - 1"  
IS: No blow .  
FF: Weak surf. blow .  
FS: No blow .



## PRESSURE SUMMARY

Time (Min.)	Pressure (psig)	Temp (deg F)	Annotation

## Recovery

Length (ft)	Description	Volume (bbl)
10.00	Drig mud 100% m	0.05

## Gas Rates

Choke (inches)	Pressure (psig)	Gas Rate (m <sup>3</sup> /d)



**TRILOBITE  
TESTING, INC.**

# DRILL STEM TEST REPORT

**TOOL DIAGRAM**

American Warrior, Inc.

**3-27s-31w Haskell, KS**

PO Box 399  
Garden City, KS 67846

**Kleystueber #1-3**

Job Ticket: 59951

**DST#: 1**

ATTN: Kevin Timson

Test Start: 2014.11.18 @ 03:31:41

## Tool Information

Drill Pipe:	Length: 4769.00 ft	Diameter: 3.80 inches	Volume: 66.90 bbl	Tool Weight: 2400.00 lb
Heavy Wt. Pipe:	Length: 0.00 ft	Diameter: inches	Volume: 0.00 bbl	Weight set on Packer: 25000.00 lb
Drill Collar:	Length: 180.00 ft	Diameter: 2.25 inches	Volume: 0.89 bbl	Weight to Pull Loose: 90000.00 lb
			<u>Total Volume: 67.79 bbl</u>	Tool Chased 0.00 ft
Drill Pipe Above KB:	8.00 ft			String Weight: Initial 70000.00 lb
Depth to Top Packer:	4968.00 ft			Final 71000.00 lb
Depth to Bottom Packer:	ft			
Interval between Packers:	70.00 ft			
Tool Length:	97.00 ft			
Number of Packers:	2	Diameter: 6.75 inches		

Tool Comments:

## Tool Description

Tool Description	Length (ft)	Serial No.	Position	Depth (ft)	Accum. Lengths
Change Over Sub	1.00			4942.00	
Shut In Tool	5.00			4947.00	
Hydraulic tool	5.00			4952.00	
Jars	5.00			4957.00	
Safety Joint	2.00			4959.00	
Packer	5.00			4964.00	27.00 Bottom Of Top Packer
Packer	4.00			4968.00	
Stubb	1.00			4969.00	
Perforations	5.00			4974.00	
Change Over Sub	1.00			4975.00	
Recorder	0.00	8790	Inside	4975.00	
Recorder	0.00	8792	Outside	4975.00	
Drill Pipe	32.00			5007.00	
Change Over Sub	1.00			5008.00	
Perforations	27.00			5035.00	
Bullnose	3.00			5038.00	70.00 Bottom Packers & Anchor
<b>Total Tool Length:</b>	<b>97.00</b>				



**TRILOBITE  
TESTING, INC**

# DRILL STEM TEST REPORT

## FLUID SUMMARY

American Warrior, Inc.

**3-27s-31w Haskell, KS**

PO Box 399  
Garden City, KS 67846

**Kleystueber #1-3**

Job Ticket: 59951

**DST#: 1**

ATTN: Kevin Timson

Test Start: 2014.11.18 @ 03:31:41

### Mud and Cushion Information

Mud Type: Gel Chem

Cushion Type:

Oil API:

deg API

Mud Weight: 9.00 lb/gal

Cushion Length:

ft

Water Salinity:

3000 ppm

Viscosity: 54.00 sec/qt

Cushion Volume:

bbbl

Water Loss: 7.99 in<sup>3</sup>

Gas Cushion Type:

Resistivity: ohm.m

Gas Cushion Pressure:

psig

Salinity: 3000.00 ppm

Filter Cake: 0.08 inches

### Recovery Information

Recovery Table

Length ft	Description	Volume bbl
10.00	Drig mud 100%m	0.049

Total Length: 10.00 ft      Total Volume: 0.049 bbl

Num Fluid Samples: 0

Num Gas Bombs: 0

Serial #: none

Laboratory Name:

Laboratory Location:

Recovery Comments:

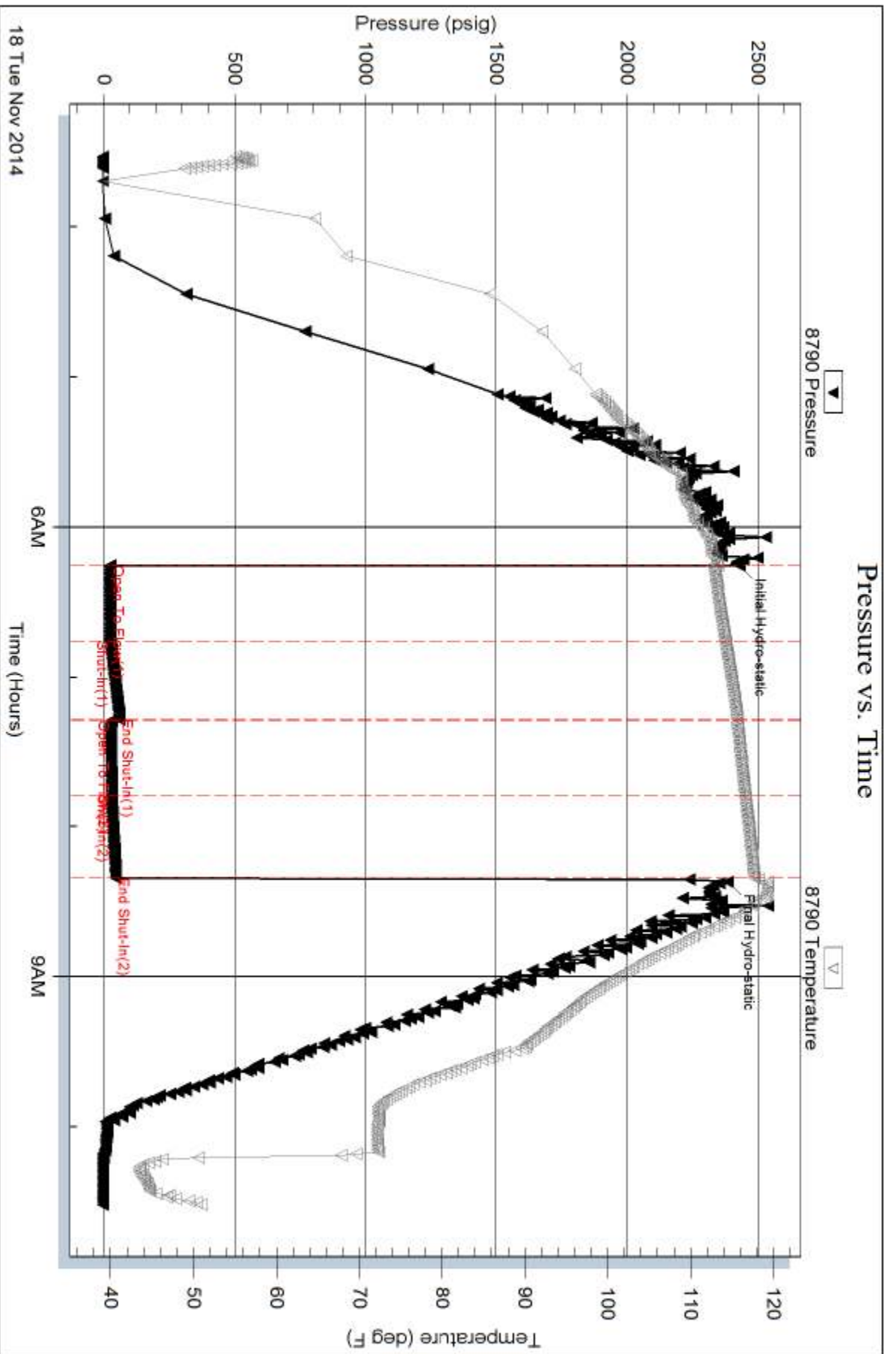
Serial #: 8790

Inside

American Warrior, Inc.

Key/stueber #1-3

DST Test Number: 1

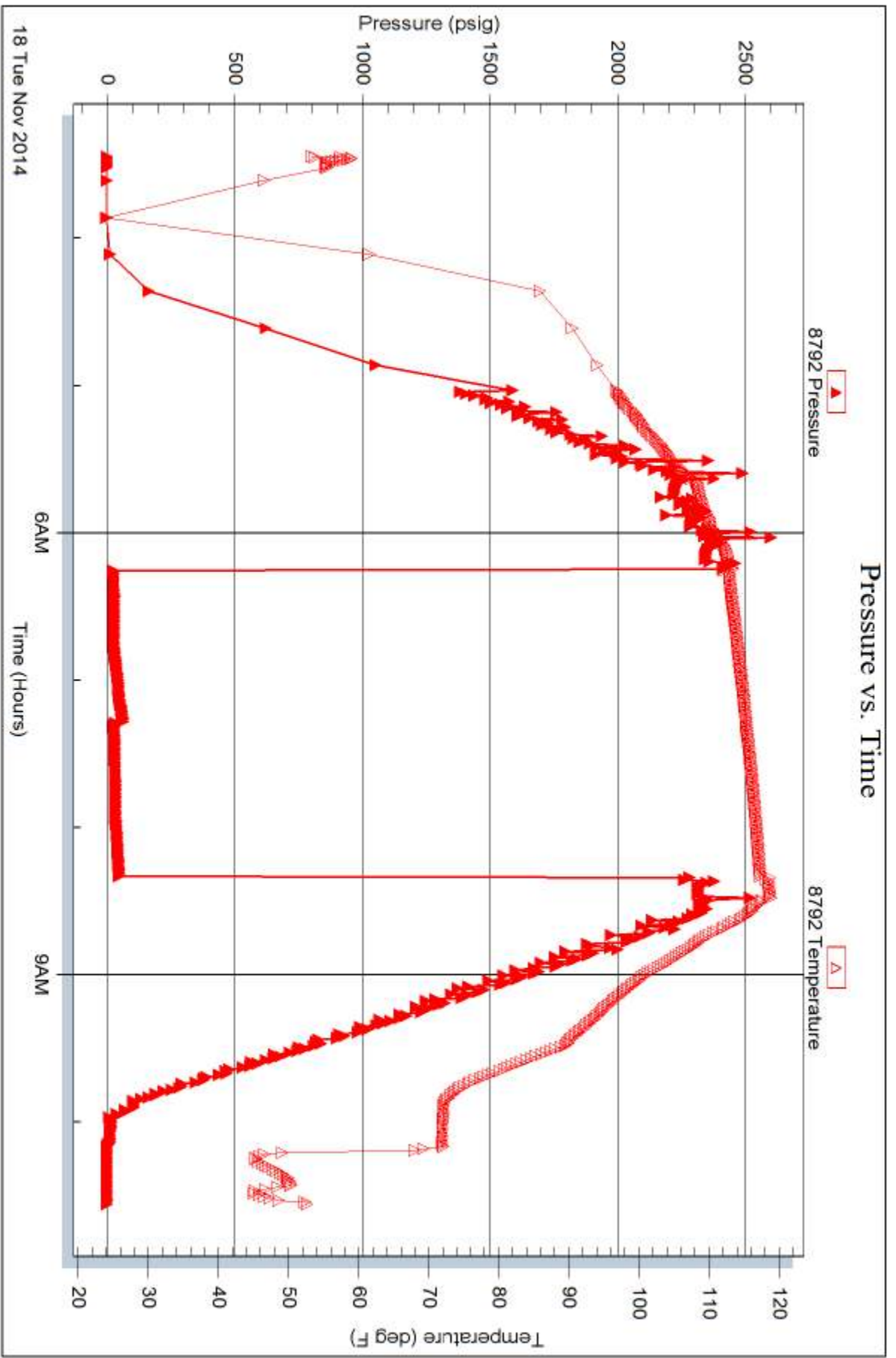


Serial #: 8792

Outside American Warrior, Inc.

Key/stueber #1-3

DST Test Number: 1



Trilobite Testing, Inc

Ref. No: 59951

Printed: 2014.11.20 @ 16:50:52



# TRILOBITE TESTING INC.

1515 Commerce Parkway • Hays, Kansas 67601

## Test Ticket

NO. 59951

4/10

Well Name & No. Kleystueber 1-3 Test No. 1 Date 11-18-14  
 Company American Warrior, Inc Elevation 2812 KB 2799 GL  
 Address 3118 Cumming Rd. Garden City, KS 67846  
 Co. Rep / Geo. Kevin Timsen Rig Duke #9  
 Location: Sec. 3 Twp. 27s Rge. 3lw Co. Haskell State KS

Interval Tested 4968-5038 Zone Tested Morrow  
 Anchor Length 70 Drill Pipe Run 4769 Mud Wt. 9.4  
 Top Packer Depth 4963 Drill Collars Run 180 Vis 54  
 Bottom Packer Depth 4968 Wt. Pipe Run Ø WL 8.0  
 Total Depth 5038 Chlorides 3000 ppm System LCM 2#  
 Blow Description IF: Weak blow, surf. - 1" ISI: No blow,  
FF: Weak surf. blow FSI: No blow.

Rec	Feet of	%gas	%oil	%water	%mud
<u>10</u>	<u>Dry mud</u>				
Rec	Feet of	%gas	%oil	%water	%mud
Rec	Feet of	%gas	%oil	%water	%mud
Rec	Feet of	%gas	%oil	%water	%mud

Rec Total 10 BHT 119 Gravity N/C API RW N/C @ N/C °F Chlorides 3000 ppm  
 (A) Initial Hydrostatic 2428  Test 1350 T-On Location 0200  
 (B) First Initial Flow 25  Jars 250 T-Started 0332  
 (C) First Final Flow 26  Safety Joint 75 T-Open 0615  
 (D) Initial Shut-In 61  Circ Sub \_\_\_\_\_ T-Pulled 0815  
 (E) Second Initial Flow 30  Hourly Standby \_\_\_\_\_ T-Out 1031  
 (F) Second Final Flow 30  Mileage 240 125rt 193.75 Comments \_\_\_\_\_  
 (G) Final Shut-In 47  Sampler \_\_\_\_\_  
 (H) Final Hydrostatic 238.5  Straddle \_\_\_\_\_  Ruined Shale Packer \_\_\_\_\_  
 Shale Packer \_\_\_\_\_  Ruined Packer \_\_\_\_\_  
 Extra Packer \_\_\_\_\_  Extra Copies \_\_\_\_\_  
 Initial Open 30  Extra Recorder \_\_\_\_\_ Sub Total 0  
 Initial Shut-In 30  Day Standby \_\_\_\_\_ Total 1868.75  
 Final Flow 30  Accessibility \_\_\_\_\_ MP/DST Disc't MP  
 Final Shut-In 30 Sub Total 1868.75

Approved By \_\_\_\_\_ Our Representative Ryan Reynolds

Trilobite Testing Inc. shall not be liable for damaged of any kind of the property or personnel of the one for whom a test is made, or for any loss suffered or sustained, directly or indirectly, through the use of its equipment, or its statements or opinion concerning the results of any test, tools lost or damaged in the hole shall be paid for at cost by the party for whom the test is made.